

**MOTOROLA**

TESTING CERT # 2518.01

**Exhibit 7B: SAR Test Report Photographs****Enterprise Mobility Solutions****EME Test Laboratory**

8000 West Sunrise Blvd

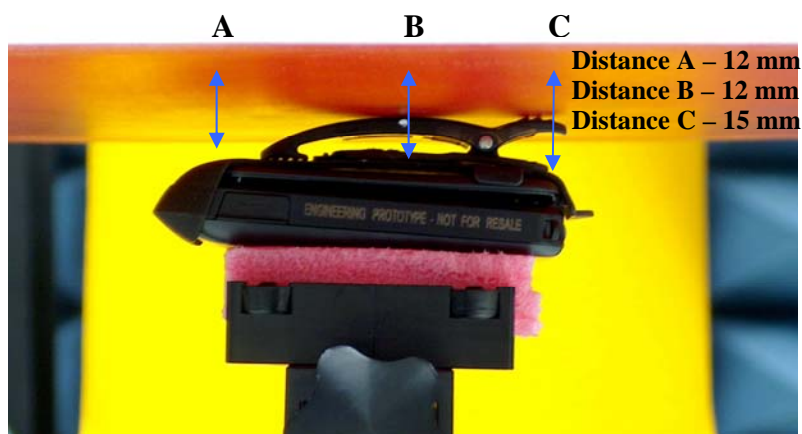
Fort Lauderdale, FL. 33322

*Signature on file***Deanna Zakharia****EMS EME Lab Senior Resource Manager, Laboratory Director****Approval Date: 8/14/09**

## 1.0 Highest SAR Test Position per body location

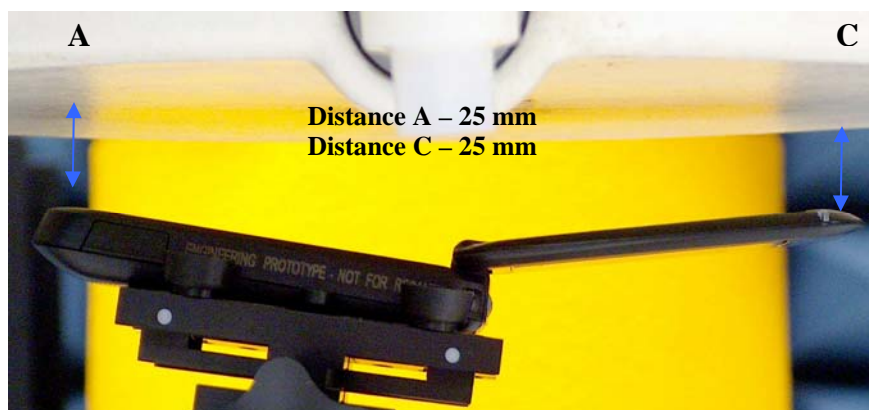
### 1.1 Body

DUT with offered carry holster NNTN7840A using offered battery SNN5782D against the phantom. Same position used with the offered audio/data cables NNTN5330B, NNTN5211B, NNTN6312A attached.



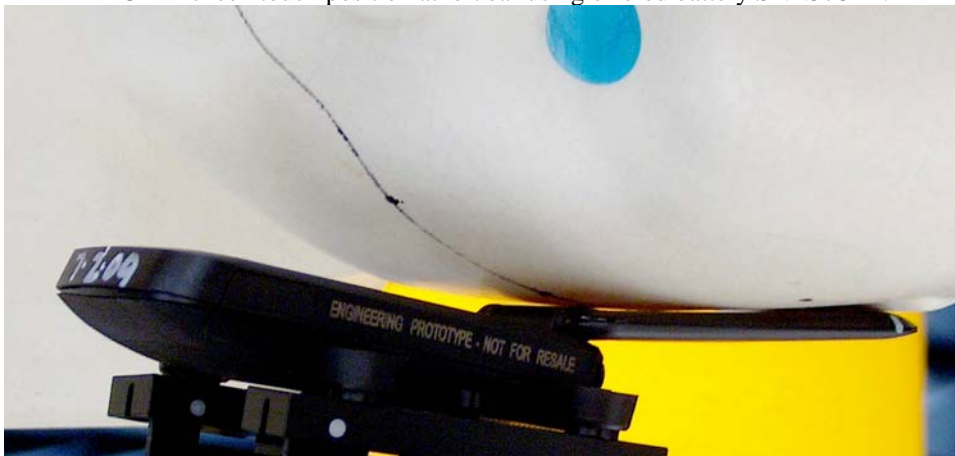
### 1.2 Face – flip opened at 2.5cm separation

DUT with flip opened and separated 2.5cm from phantom using offered battery SNN5782D.



**1.3 Head**

DUT in cheek touch position at left ear using offered battery SNN5782D.

**1.4 Hand**

Not applicable.

**2.0 Other SAR tested positions at the body****2.1 Body worn**

See section 1.1

**2.2 Front Side against phantom**

Not applicable.

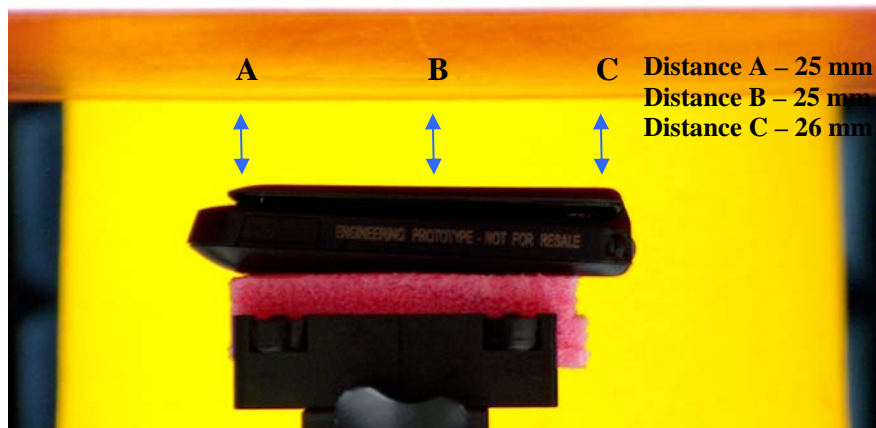
**2.3 Back side against phantom**

Not applicable.

## 2.4 Front 2.5cm separation

DUT with front side separated 2.5cm from phantom using offered battery SNN5782D.

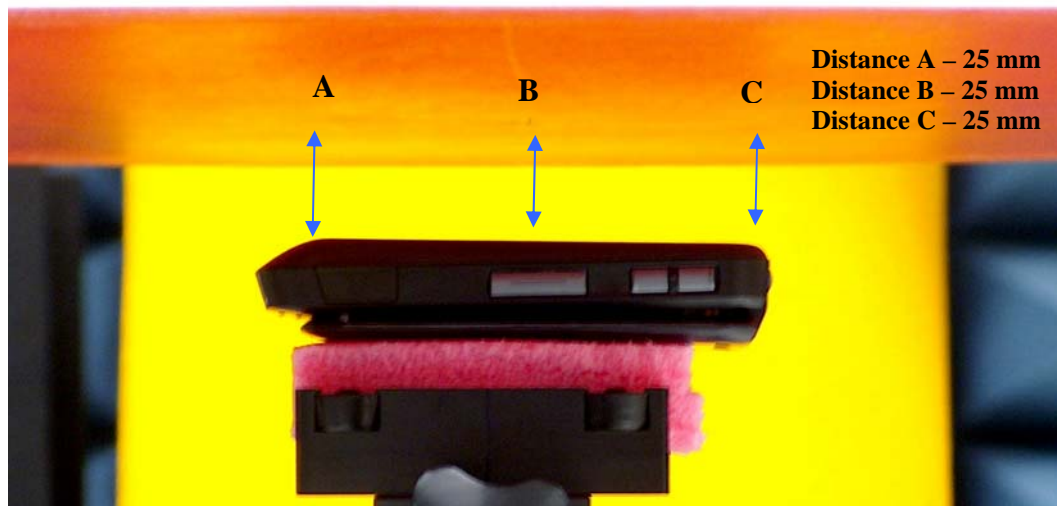
Same position used with offered audio/data cable SKN6238A, NNTN5330B, NNTN5211B, NNTN6312A.



## 2.5 Back 2.5cm separation

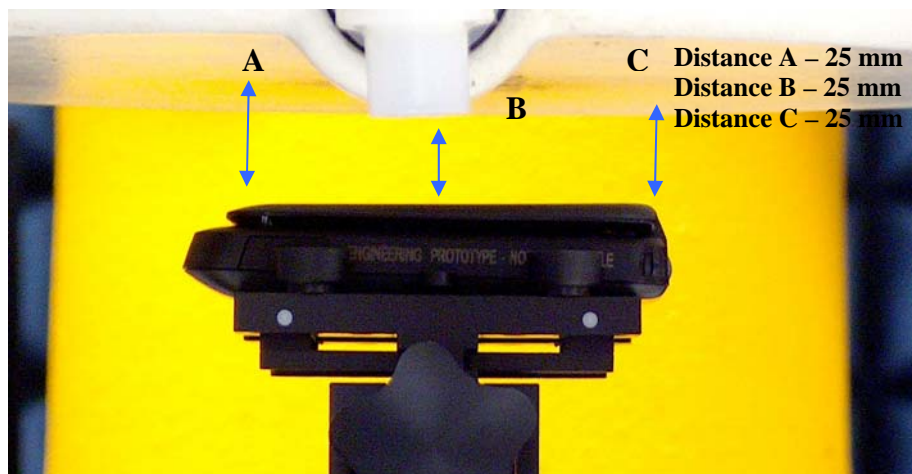
DUT with back side separated 2.5cm from phantom using offered battery SNN5782D.

Same position used with offered audio/data cable NNTN5330B.



### 3.0 Other SAR tested position at the face

**3.1** DUT with flip closed with 2.5cm separation using the offered battery SNN5782D.



**3.2** DUT with flip opened with 2.5cm separation using the offered battery SNN5782D.



### 4.0 Other SAR tested positions at the head

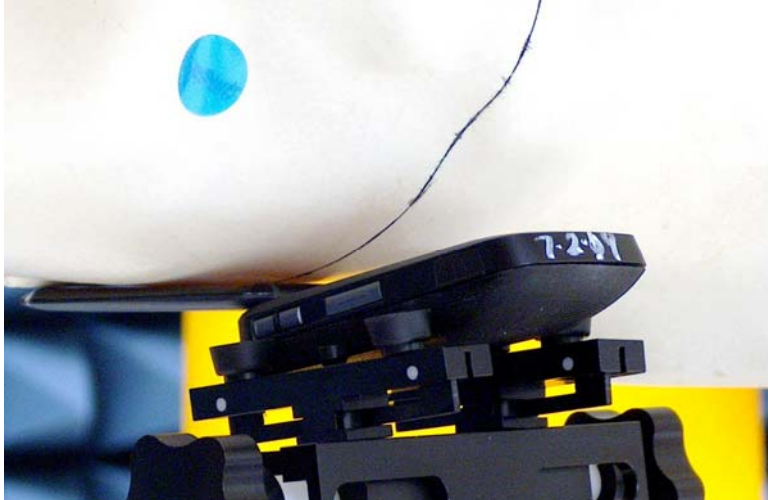
**4.1 Left ear touch**  
See section 1.3

**4.2 Left ear tilt**

DUT in 15° tilt position using offered battery SNN5782D.

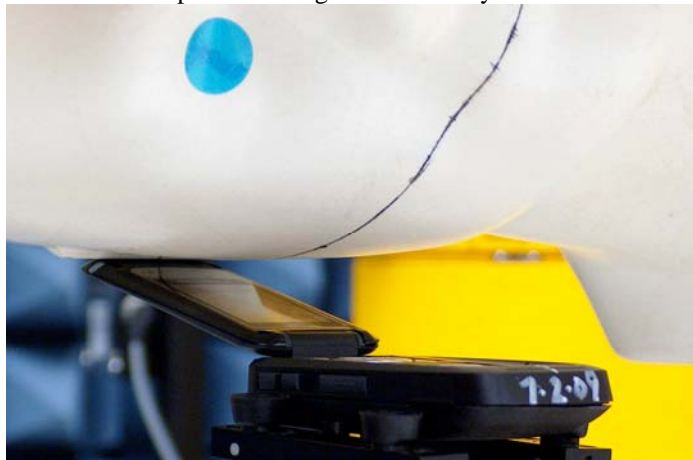
**4.3 Right ear touch**

DUT in cheek touch position using offered battery SNN5782D.



**4.4 Right ear tilt**

DUT in 15° tilt position using offered battery SNN5782D.

**5.0 Other SAR tested positions at the hand****5.1 Left side**

Not applicable.

**5.2 Right side**

Not applicable.

**5.3 Top side**

Not applicable.

**5.4 Bottom side**

Not applicable.

**5.5 Back side**

Not applicable.



## 6.0 DUT and Accessory Photos

The purpose of these photos is to illustrate the offered body-worn carry accessory. The sample that was used in the following photos represents the product used to obtain the results presented herein.

### 6.1 Tested body worn photos



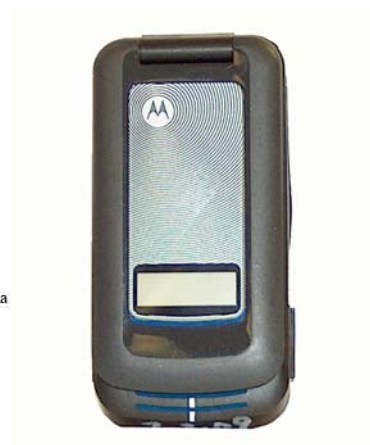
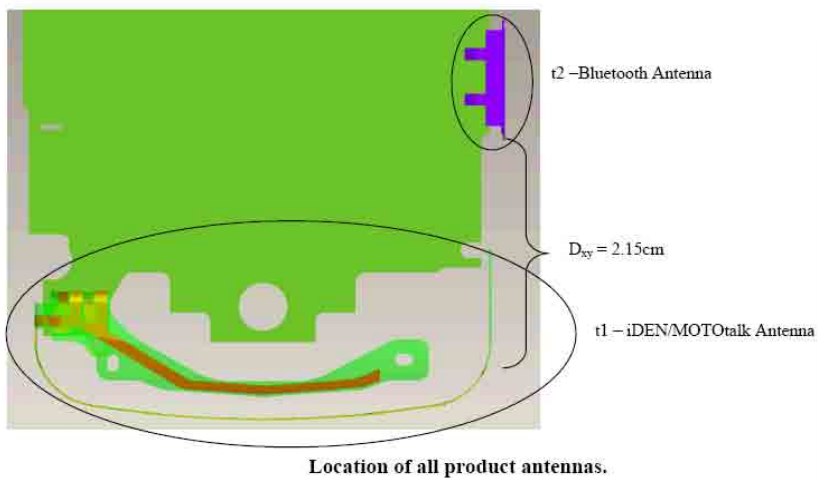
**DUT Side View**  
**Carry Holster NNTN7840A**



**DUT Front View**  
**Carry Holster NNTN7840A**

## 7.0 Simultaneous Transmission Considerations – Pursuant to FCC KDB 648474 Practice

Antenna locations





## 7.1 Operating modes

Device Operating Mode	Remarks
iDEN SMR	Can operate simultaneously with Bluetooth, but <i>not</i> with MOTotalk.
MOTotalk	Can operate simultaneously with Bluetooth, but <i>not</i> with iDEN.
Bluetooth	Can operate simultaneously with MOTotalk or iDEN.

Note: The iDEN, MOTotalk and GPS services share the same antenna, and cannot operate simultaneously

## 7.2 Simultaneous Transmission Device Tabulation

Per FCC KDB648474 BT SAR performance results not required.

<sup>1</sup> Maximum conducted power available at the antenna, according to the source-based time averaging requirements of Section 2.1093(d)(5).

<sup>2</sup>  $P_{Ref}$  is defined in KDB 648474 for unlicensed transmitters, as follows:

F, GHz	2.45	5.15 – 5.35	5.47 – 5.85
$P_{Ref}$ , mW	12	6	5

Device, Mode, FMHz	P, mW <sup>1</sup>	Single SAR, W/kg	Remarks
t1, iDEN, 800/900	640	1.03	Routine Evaluation
t2, Bluetooth, 2441	2.5	0	{ $d_{12} < 2.5 \text{ cm}$ } { $P_2 \leq P_{Ref}$ } { $SAR_1 < 1.2 \text{ W/kg}$ }
<b><math>\Sigma</math>all SAR1g</b>		1.03	BT SAR not required

- a) BT max power (2.5mW) < 12mW (Pref @ 2.45GHz)
- b) Antenna separation distances is less than 2.5cm. (Refer to section 7.0)
- c) SAR t1 (1.03 W/kg) is less than 1.2 W/kg.