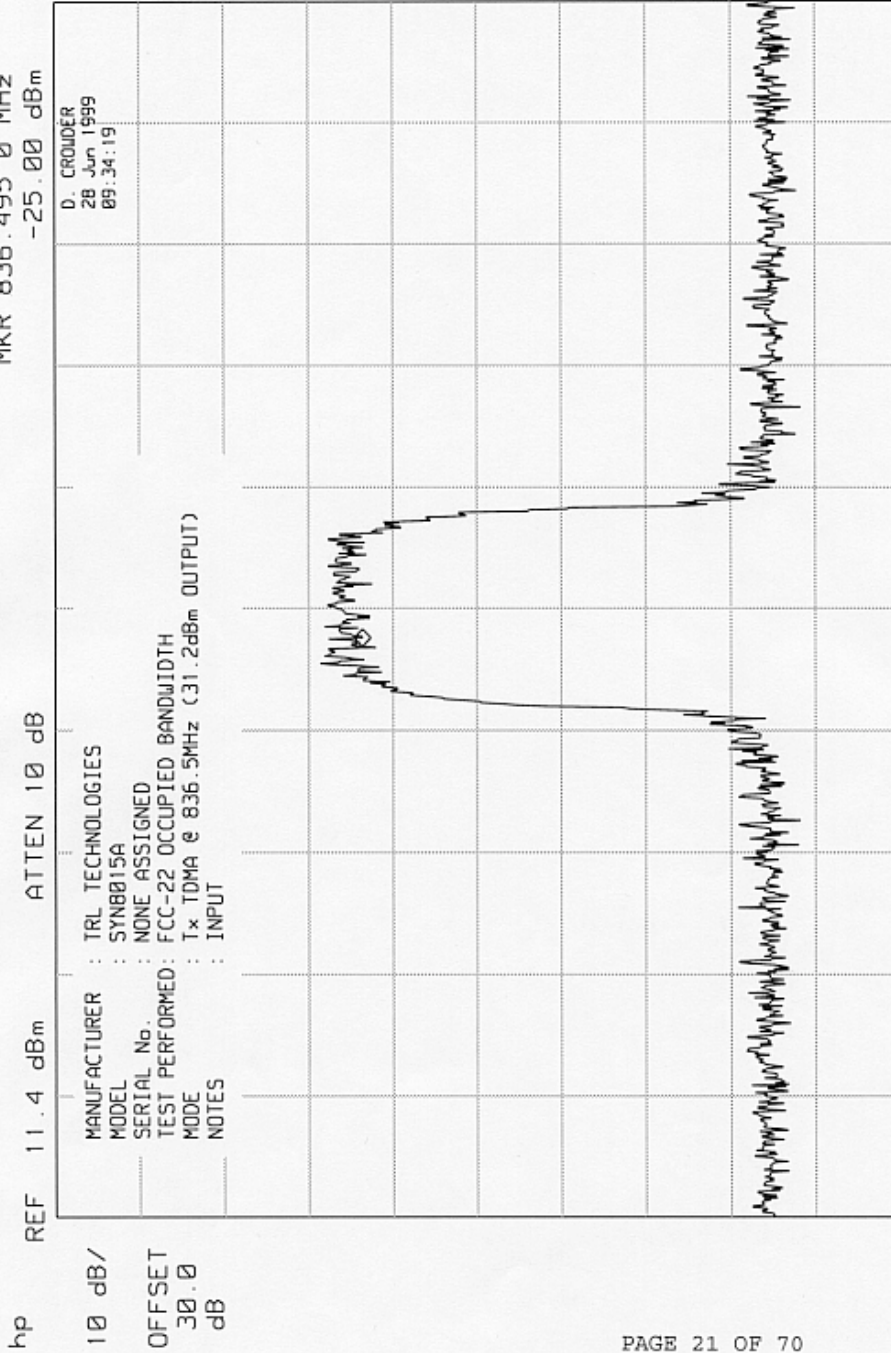


ELITE ELECTRONIC ENGINEERING CO

MKR 836.495 0 MHz
-25.00 dBm

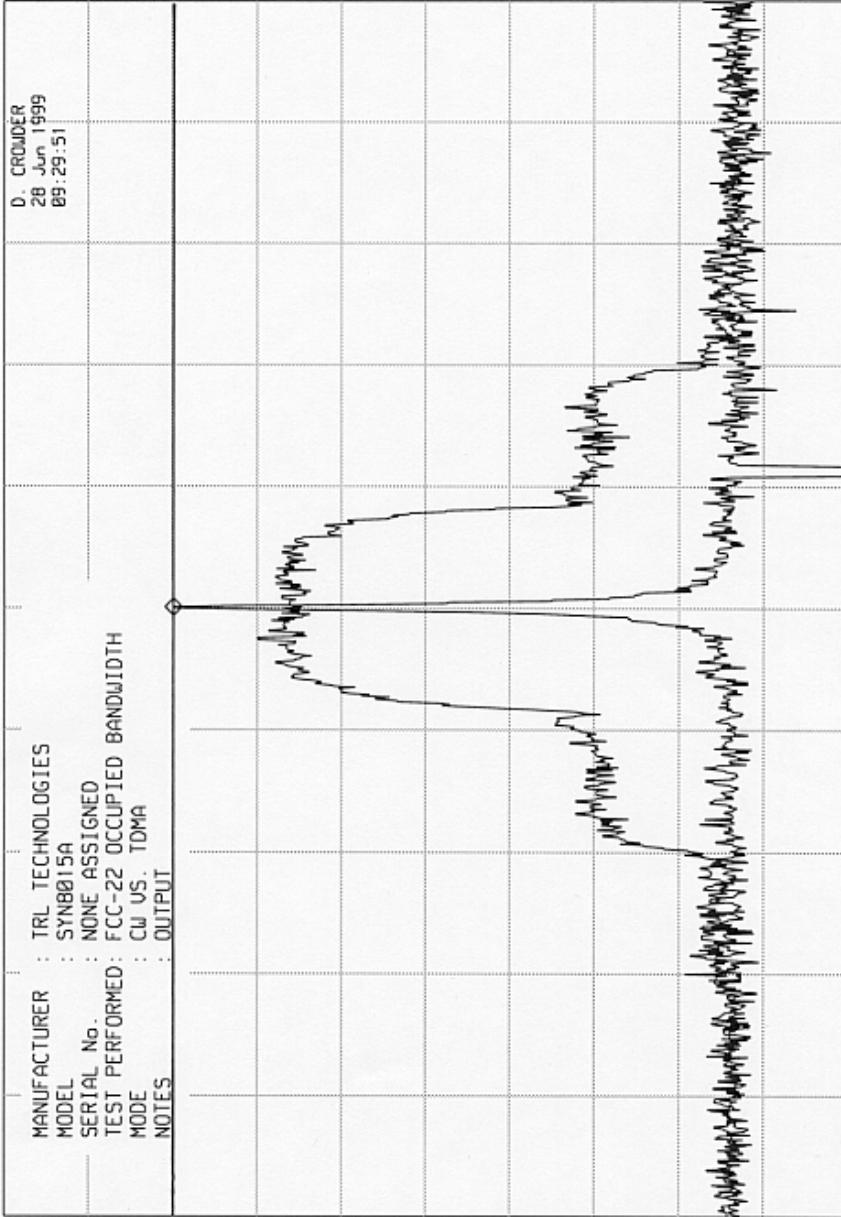


ELITE ELECTRONIC ENGINEERING CO

MKR 836.500 0 MHz
1.30 dBm

REF 21.4 dBm
ATTEN 10 dB + 30dB EXT.

hp 10 dB/
OFFSET 30.0 dB



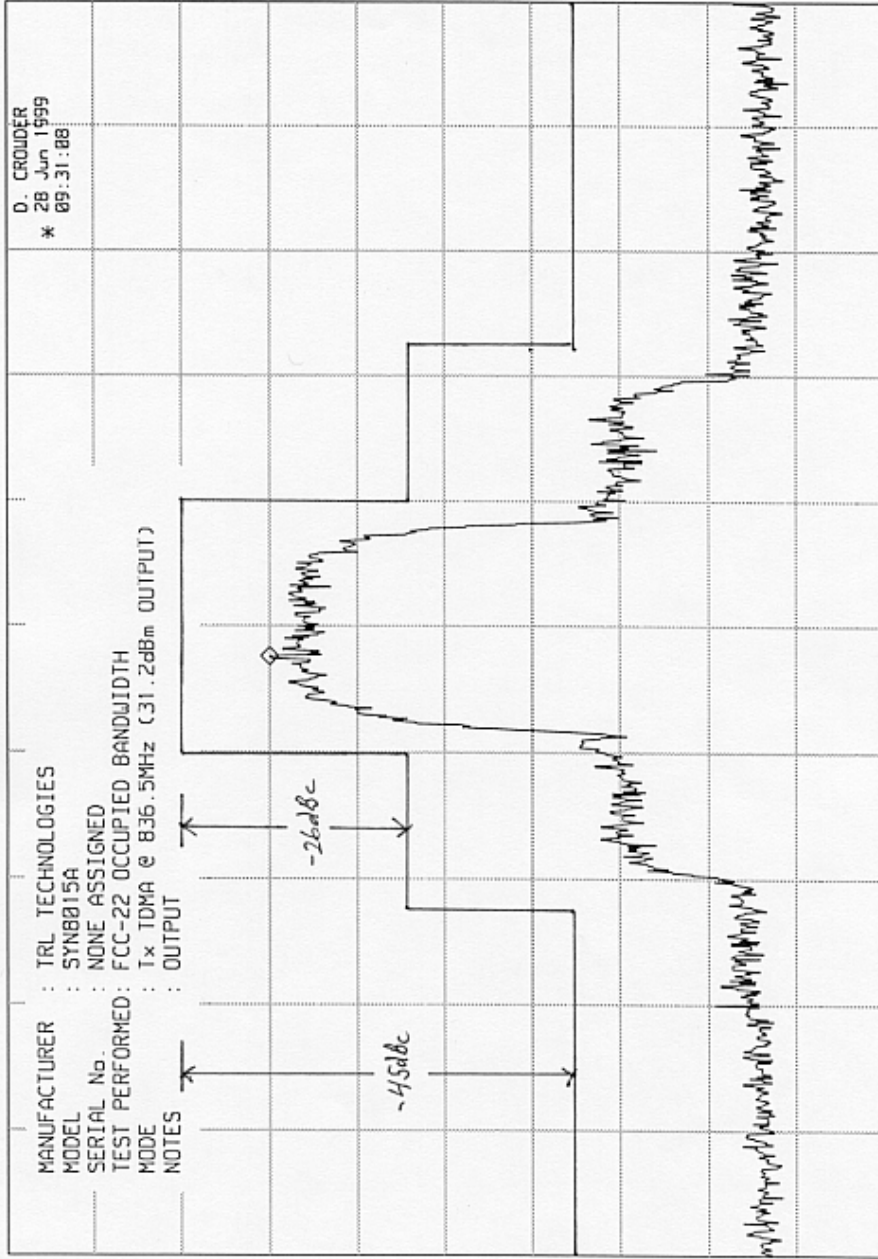
CENTER 836.500 MHz
RES BW 300 Hz (1)
UBW 3 kHz
SPAN 200 kHz
SWP 15.0 sec

ELITE ELECTRONIC ENGINEERING CO

MKR 836.495 0 MHz
-8.60 dBm

hp 10 dB/
OFFSET 30.0 dB

REF 21.4 dBm ATTN 10 dB + 30 dB EXT.



D. CROUDER
 * 28 Jun 1999
 09:31:08

ELITE ELECTRONIC ENGINEERING CO

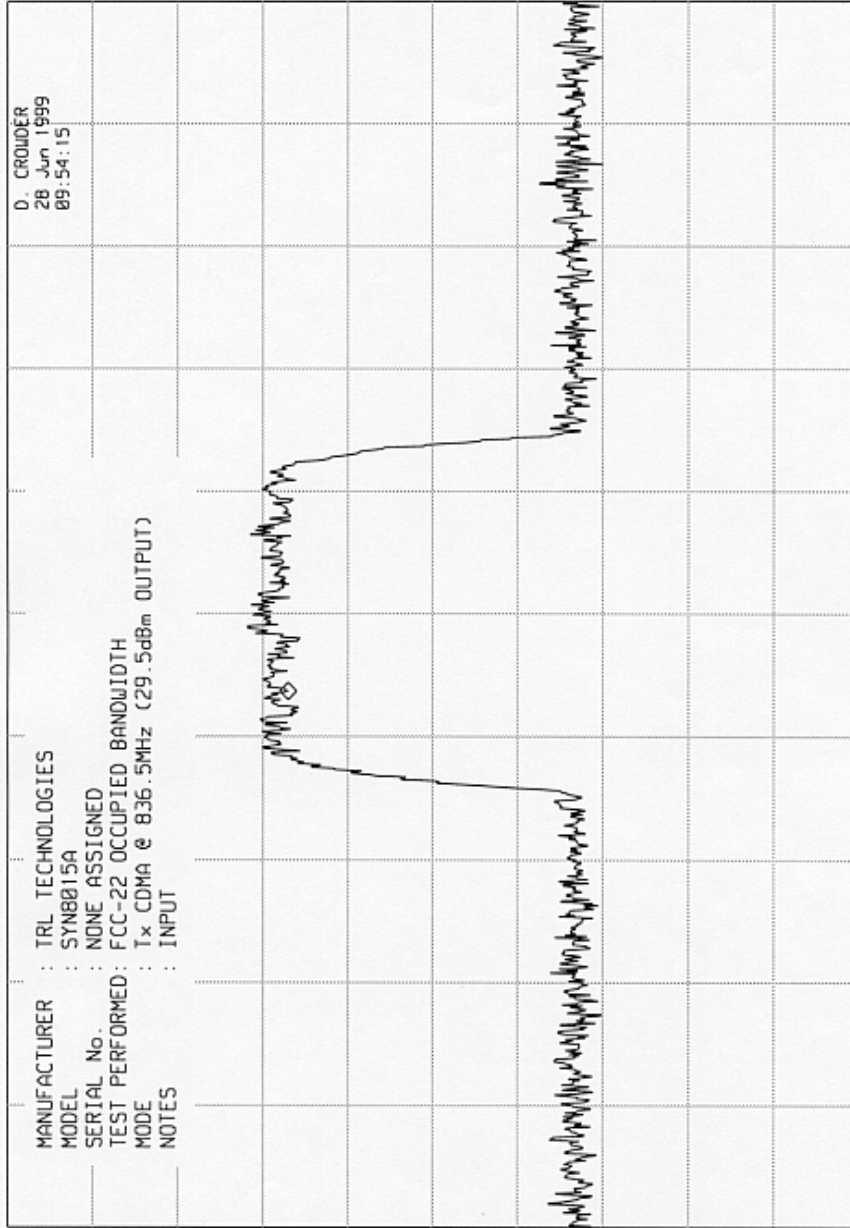
MKR 836.180 MHz
-23.30 dBm

REF 9.7 dBm

ATTEN 10 dB

hp
10 dB/

OFFSET
30.0
dB



ELITE ELECTRONIC ENGINEERING CO

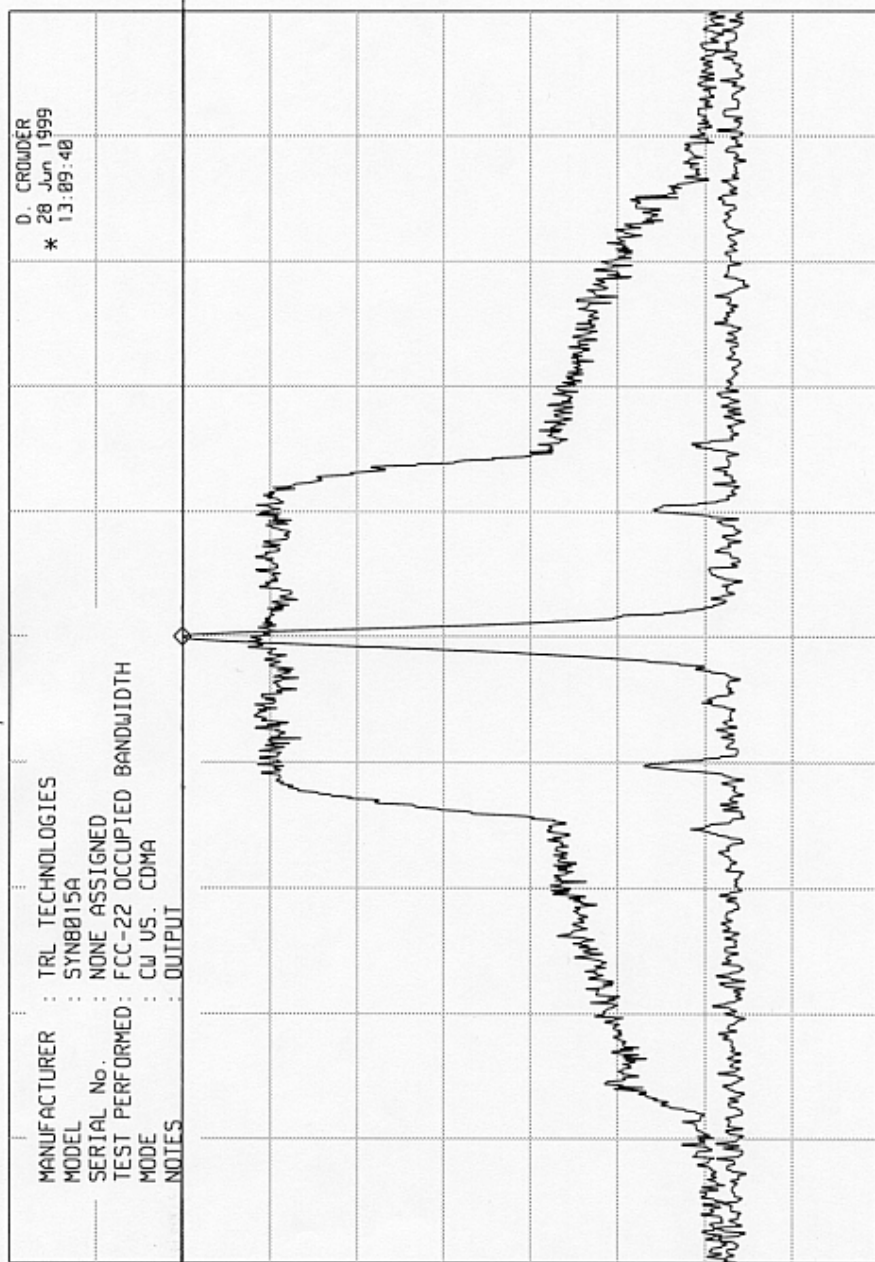
MKR 836.495 MHz
-0.80 dBm

ATTEN 10 dB + 30dB EXT.

REF 19.1 dBm

hp

10 dB/
OFFSET
20.0
dB



ELITE ELECTRONIC ENGINEERING CO

MKR 836.495 MHz
-8.70 dBm

REF 19.1 dBm
ATTEN 10 dB + 30 dB

hp

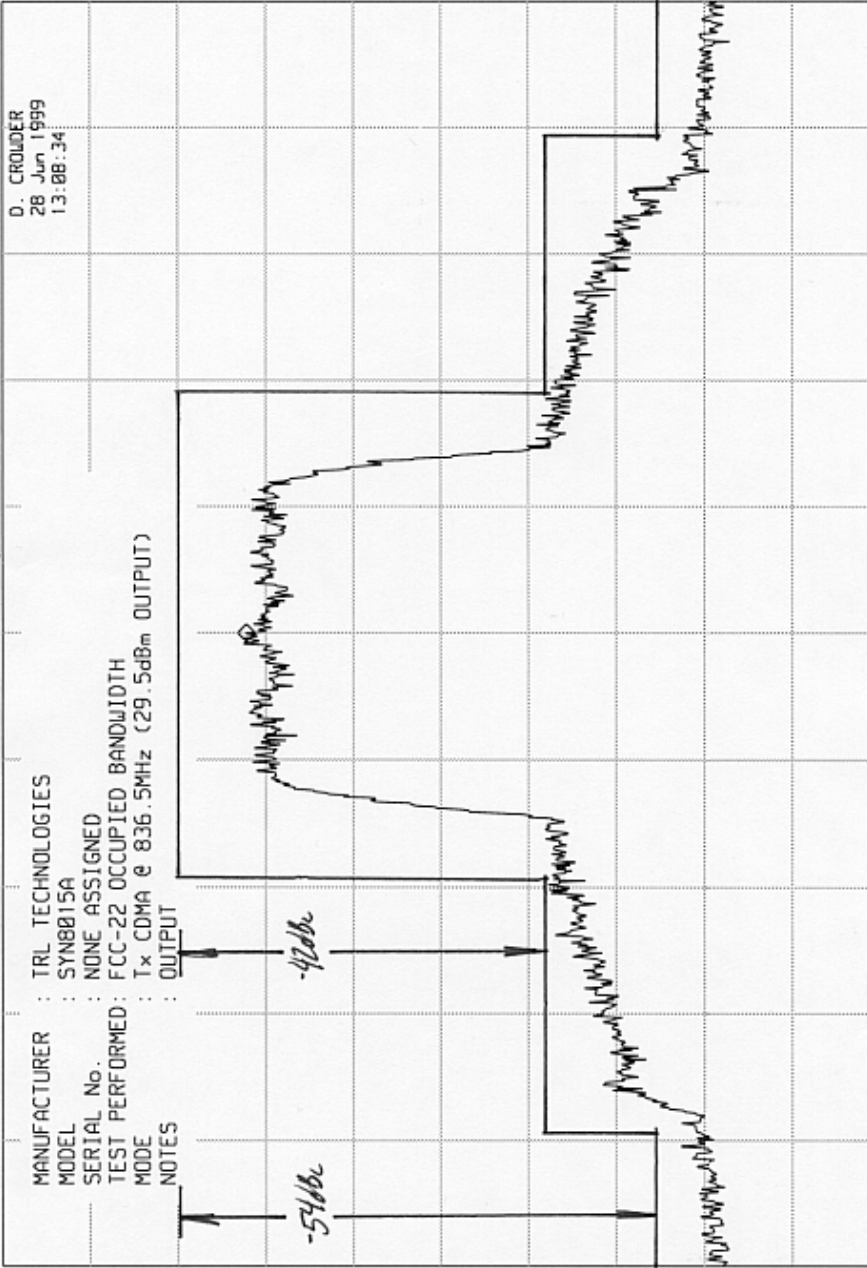
10 dB/

OFFSET

20.0

dB

MANUFACTURER : TRL TECHNOLOGIES
 MODEL : SYN8015A
 SERIAL No. : NONE ASSIGNED
 TEST PERFORMED : FCC-22 OCCUPIED BANDWIDTH
 MODE : Tx CDMA @ 836.5MHz (29.5dBm OUTPUT)
 NOTES : OUTPUT



D. CROIDER
28 Jun 1999
13:08:34

CENTER 836.50 MHz
RES BW 30 kHz(i)
SPAN 5.00 MHz
SWP 37.5 msec

UBW 300 kHz