

RF adjustment using JIG.



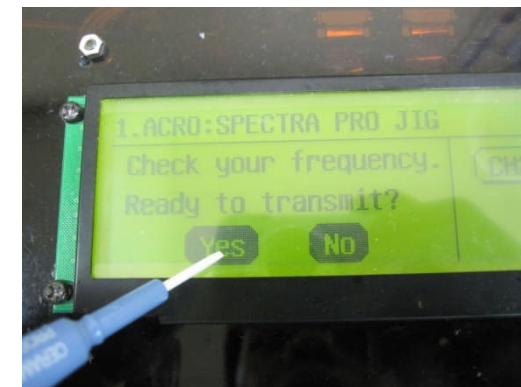
1. Connect Power supply(7.2V) to the JIG. Also connect WATT meter to JIG. Watt meter setting is 300mW.



2. Insert Spectra Pro to the JIG. Turn ON the power of the JIG.



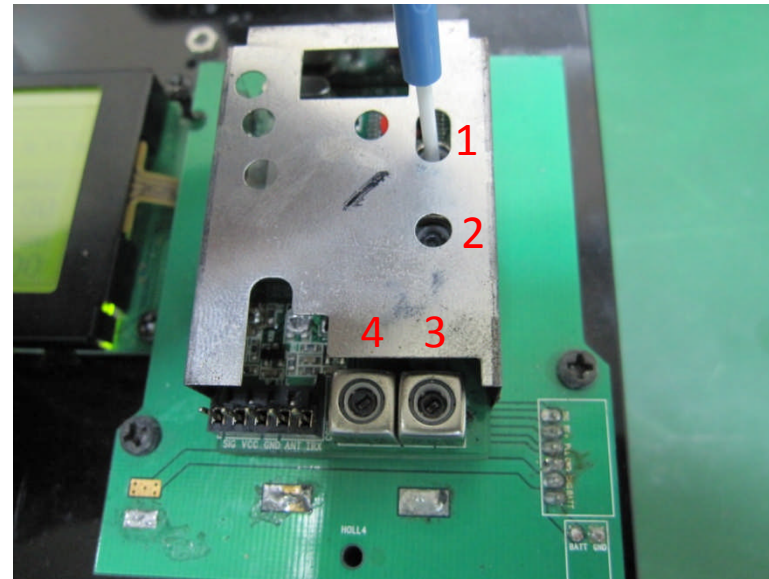
3. Check frequency if it is in correct setting.



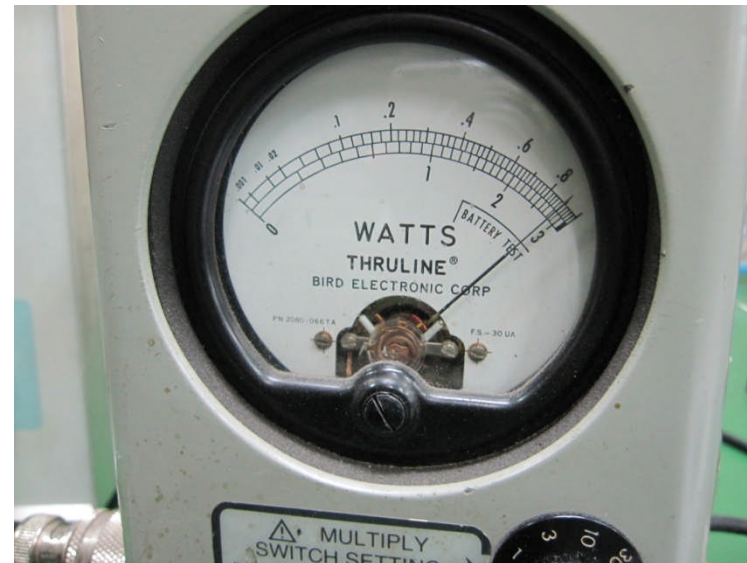
4. Click on YES.

RF adjustment using JIG.

5. Adjust RFT coil to maximum RF.
Follow sequence in the picture.
Repeat the procedure to get the
maximum RF.



6. Turn OFF power of JIG, remove module. Repeat step 2 for the next unit.



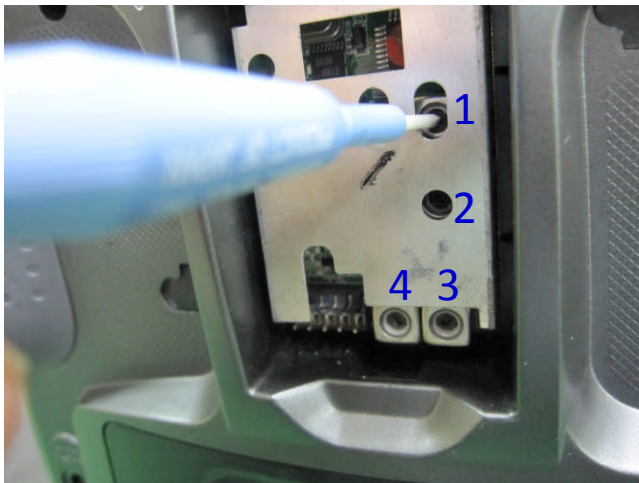
RF adjustment using Aurora 9.



1. Turn On power of Aurora 9.



2. Click YES.



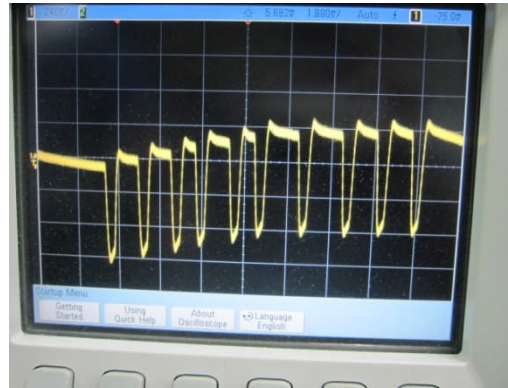
3. Adjust each RFT coil to maximum RF. Follow sequence in the picture. Repeat this process until you get the maximum RF.



4. Check for the RF status (bounding fail). Re-adjust RFT coil again when encounter this problem.

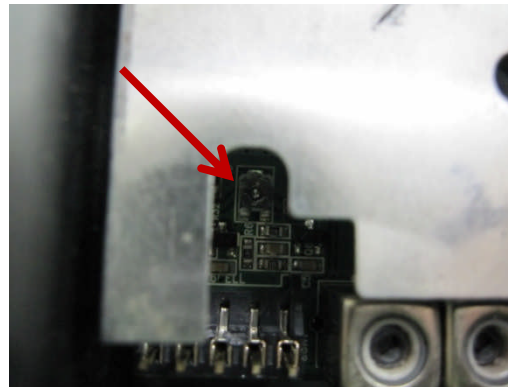
RF adjustment using Aurora 9.

5. Check for the wave display after RF adjustment.



6. Adjust modulation by adjusting the TRIMMER.

SPECS: 2.8 KHz +/- 0.3 KHz



7. Adjust Frequency by adjusting the TRIMMER.

