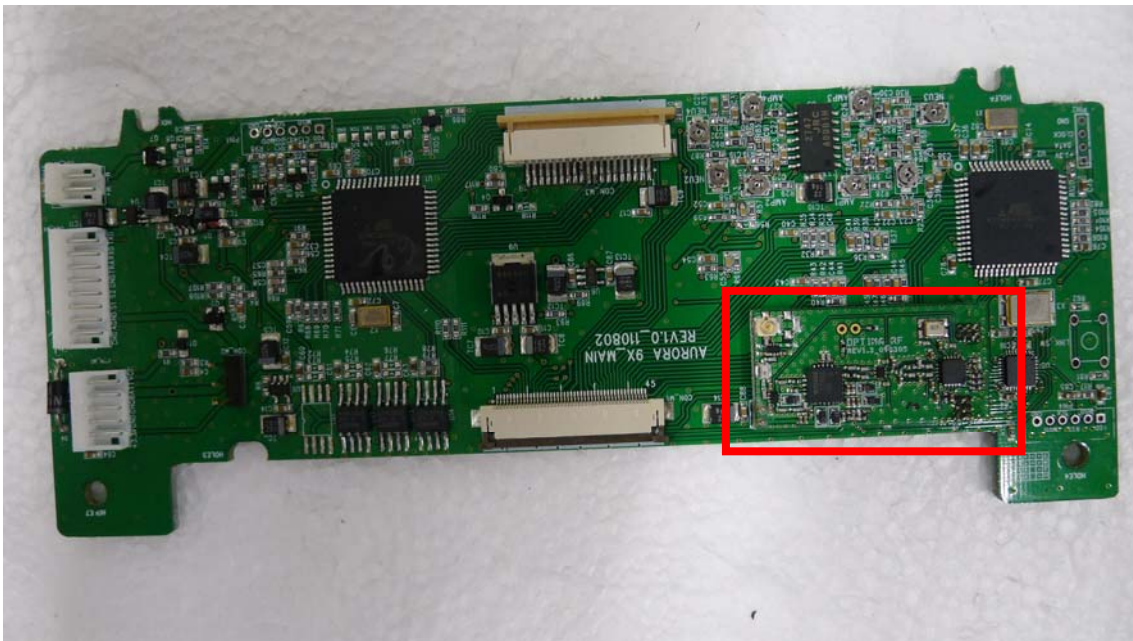


# ***Internal photos of EUT***

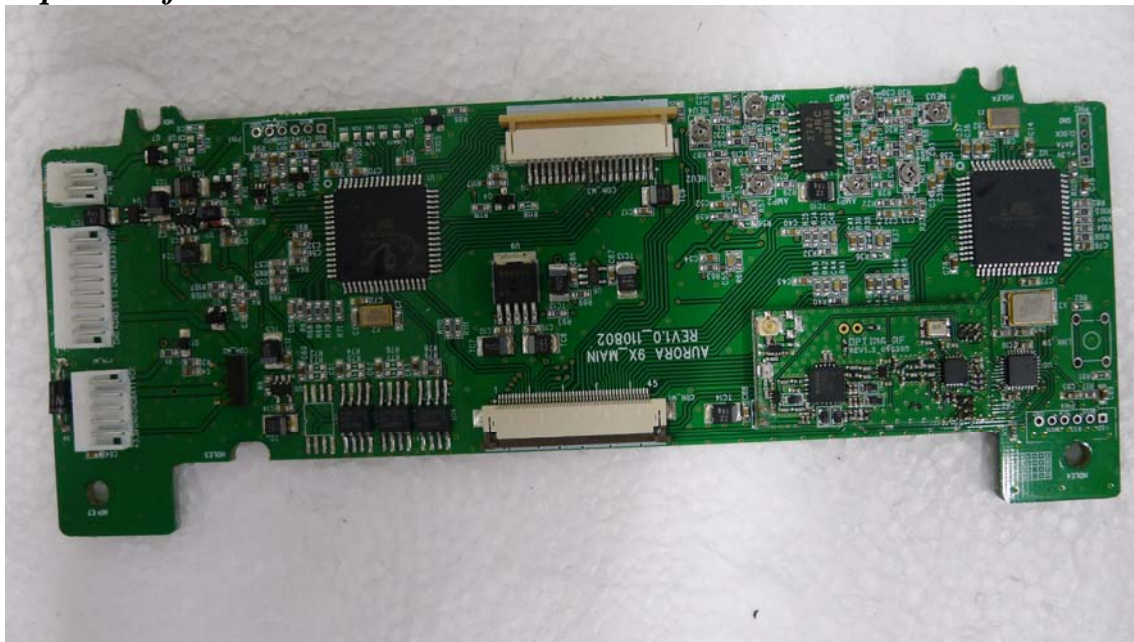
## *Antenna*



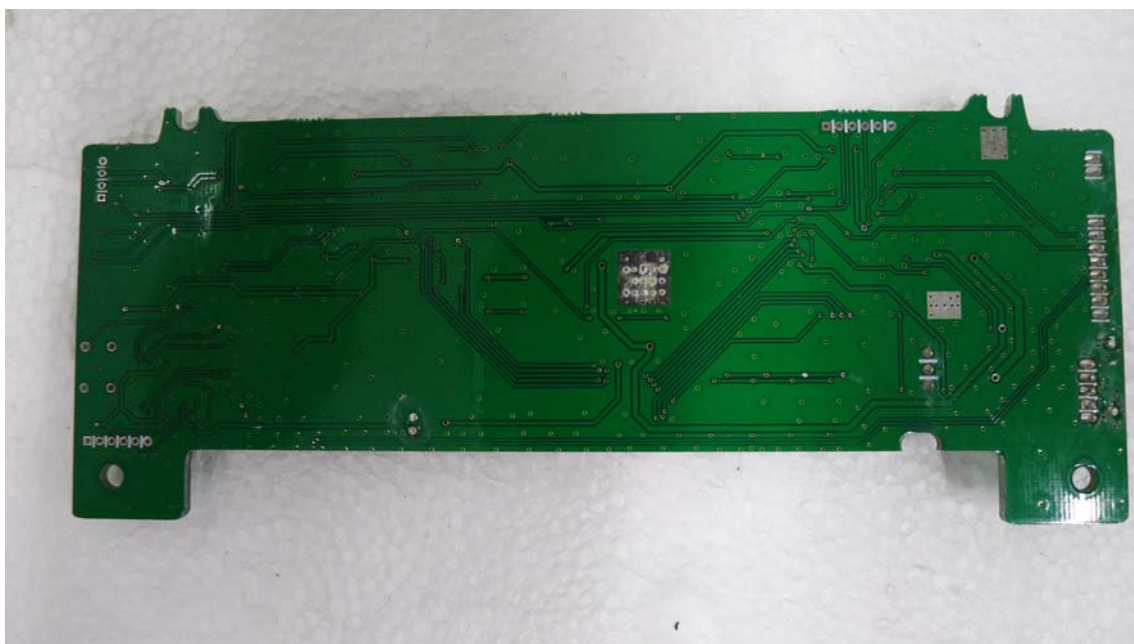
## *view of RF Module*



*Top view of Main PCB*



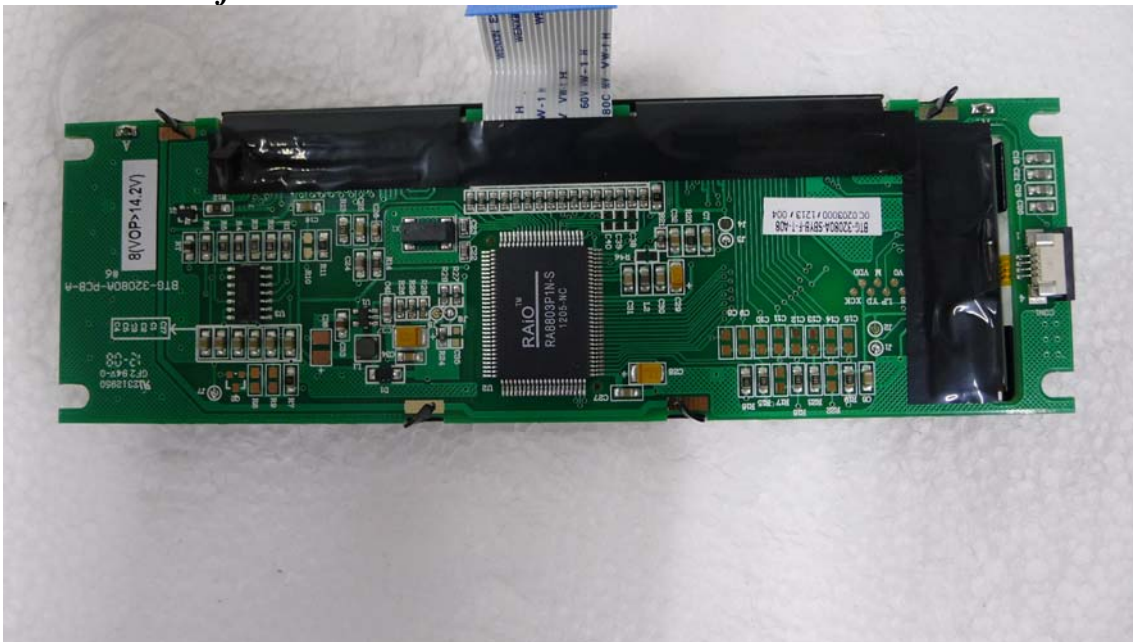
*Bottom view of Main PCB*



*Top view of LCD*

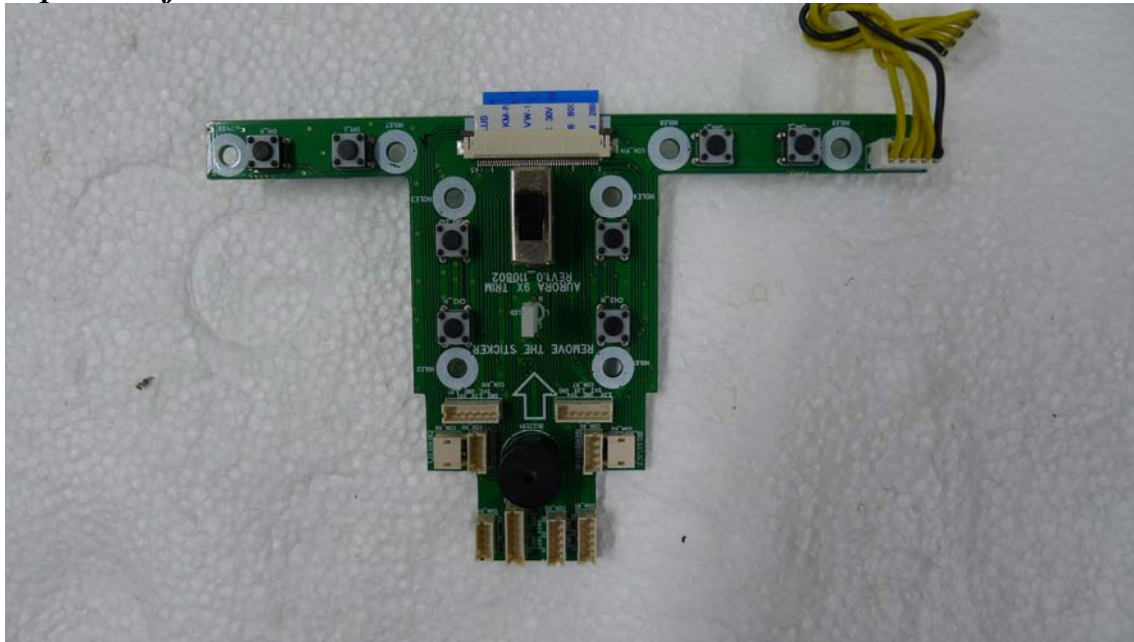


*Bottom view of LCD*

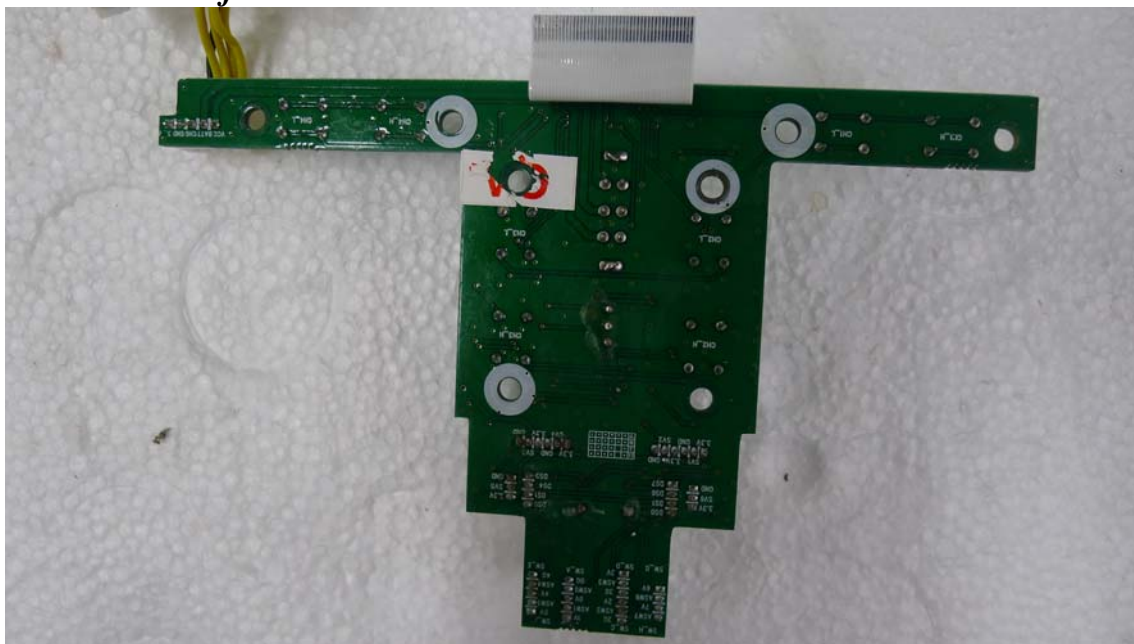




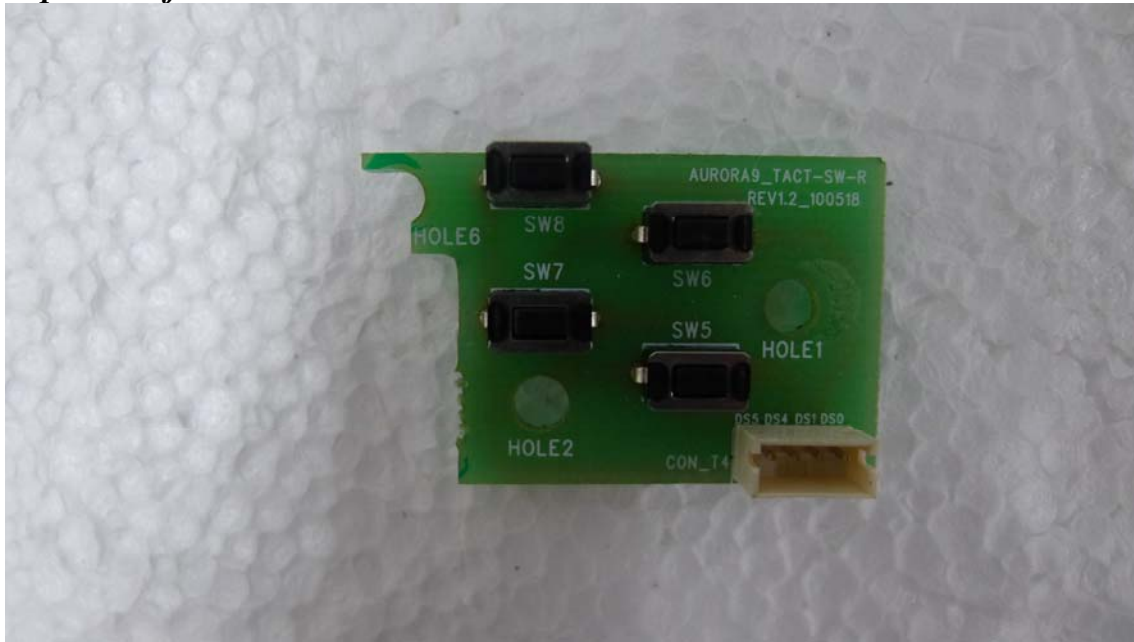
*Top view of SUB PCB-1*



*Bottom view of SUB PCB-1*



***Top view of SUB PCB-2***



***Bottom view of SUB PCB-2***

