
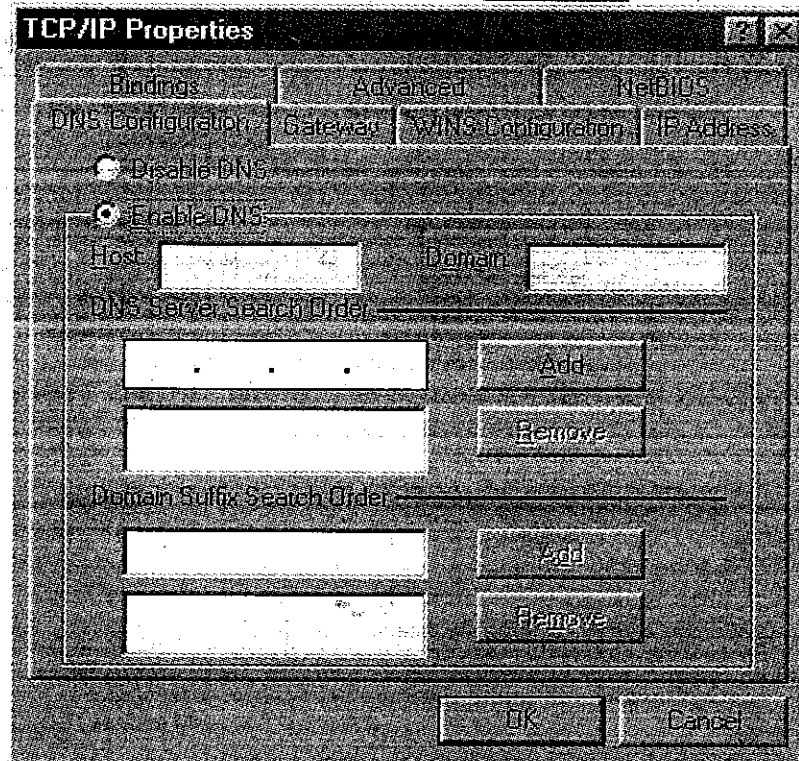
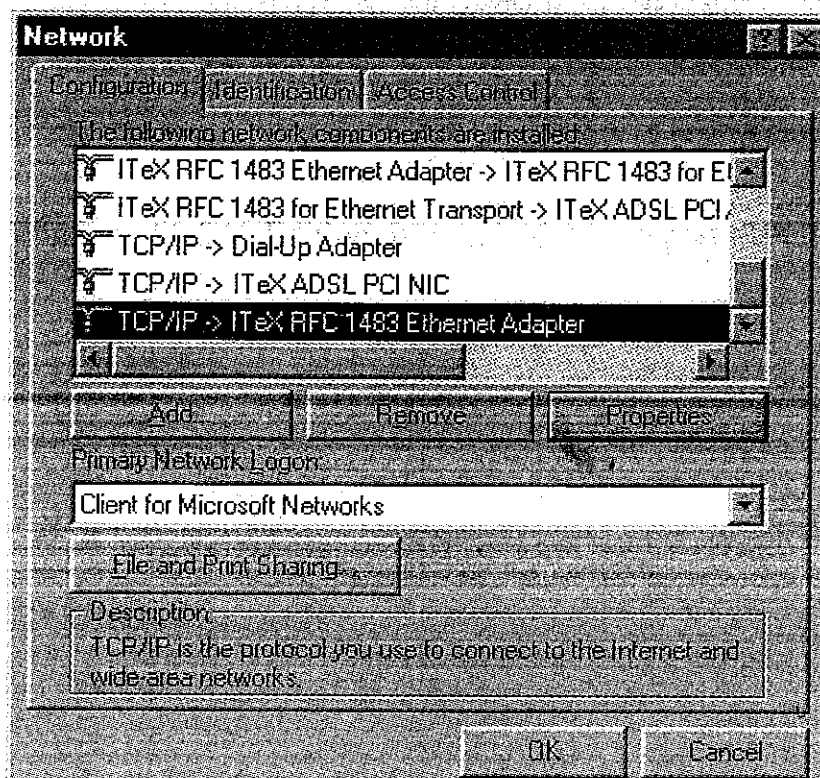


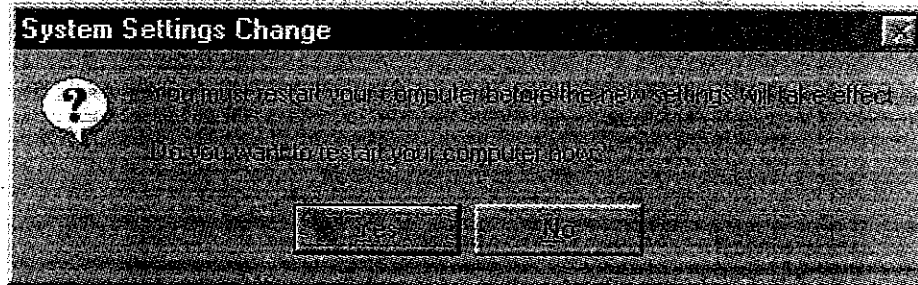
<Step05> To configure the Domain Name Server, simply select the Enable DNS option. Enter the Host and Domain settings. Enter the DNS Server search order and click 



<Step06> Once all the TCP/IP properties have been set, click OK to return to the Network window then click OK to close the Network window.

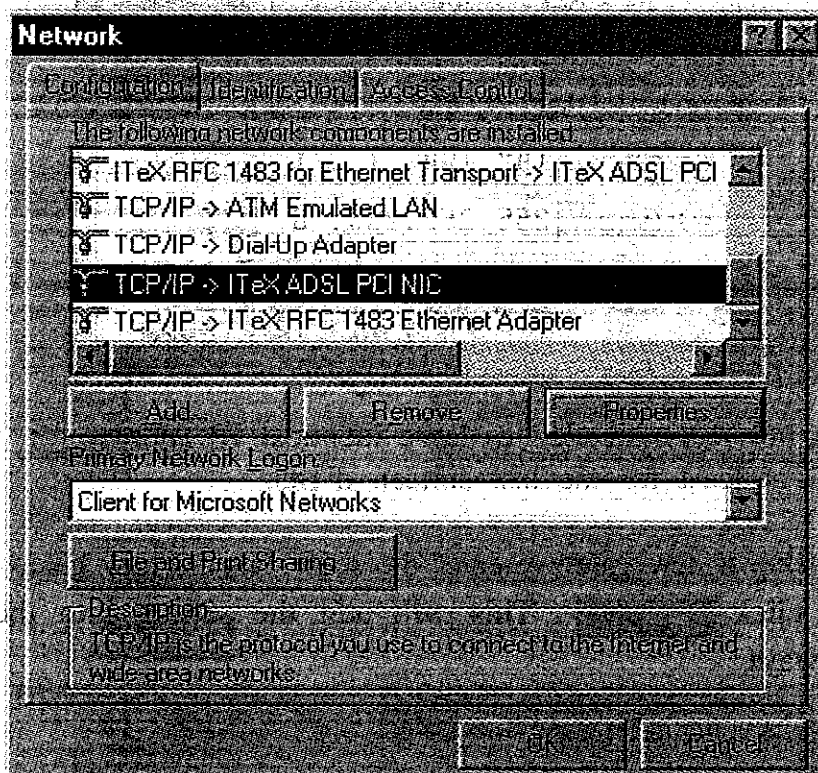


<Step07> Click when prompted "Do you want to restart your computer now?" Configuring the ADSL modem for RFC1483 is completed.



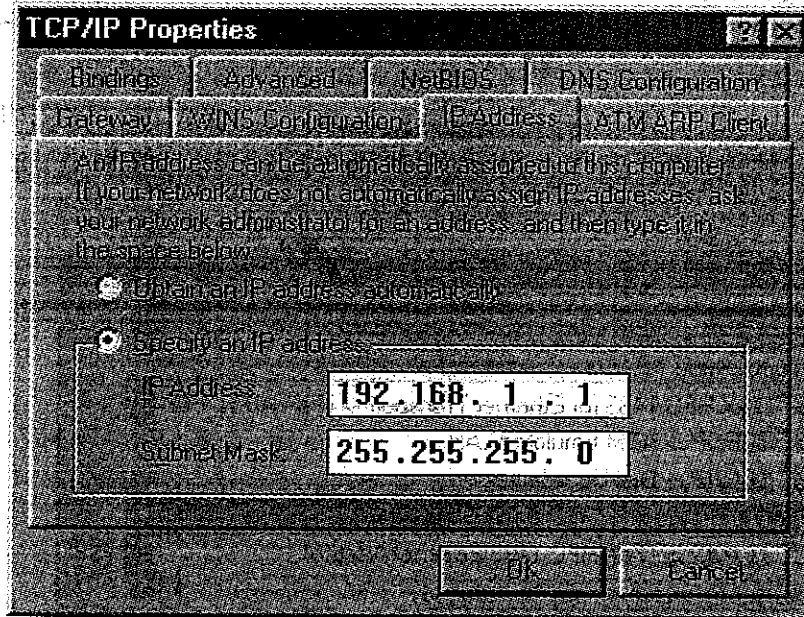
Configuring The ADSL Network (TCP/IP) For RFC1577

<Step01> From the Network configuration window, select the "TCP/IP -> ITeX ADSL PCI NIC" option in the configuration tab, click "Properties". The TCP/IP Properties window will appear.



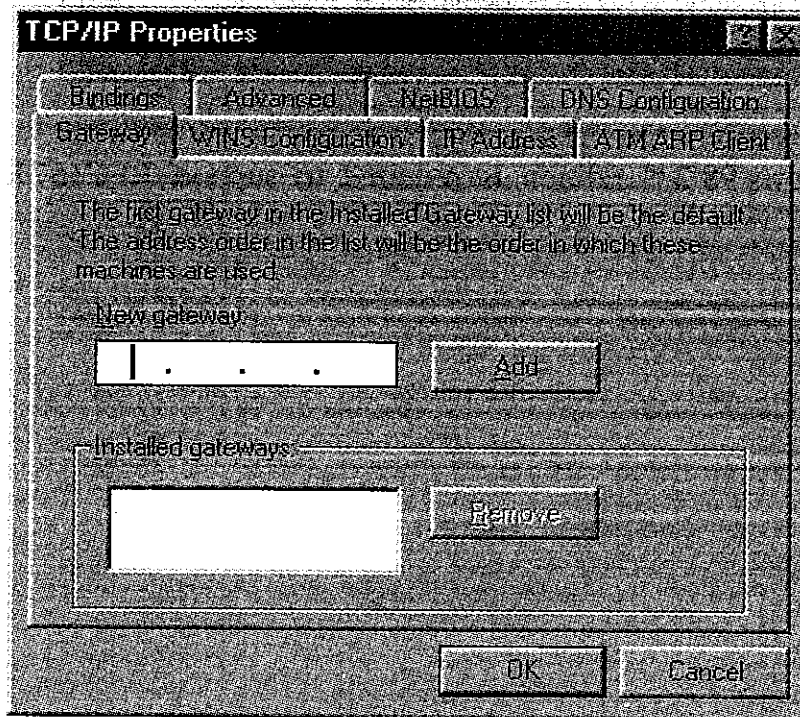
Note: Windows 98 2nd Edition is required to support RFC1577.

<Step02> To setup the IP Address, select the IP Address tab and then select the "Specify an IP address" option. Enter the IP Address and Subnet Mask settings.

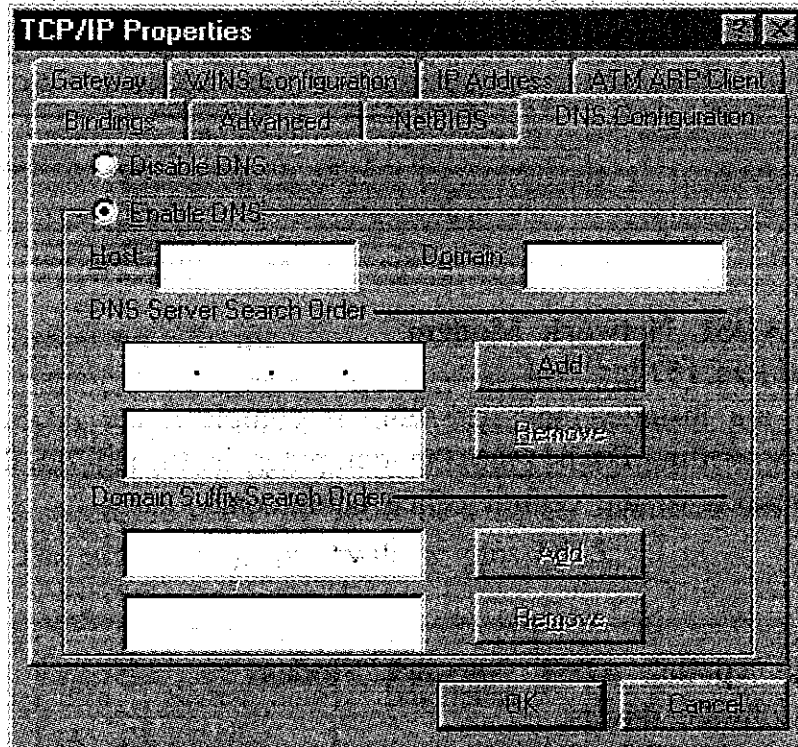


Note: It is not recommended to have identical IP address for 1483 and 1577, at least for the last sixteen digits.

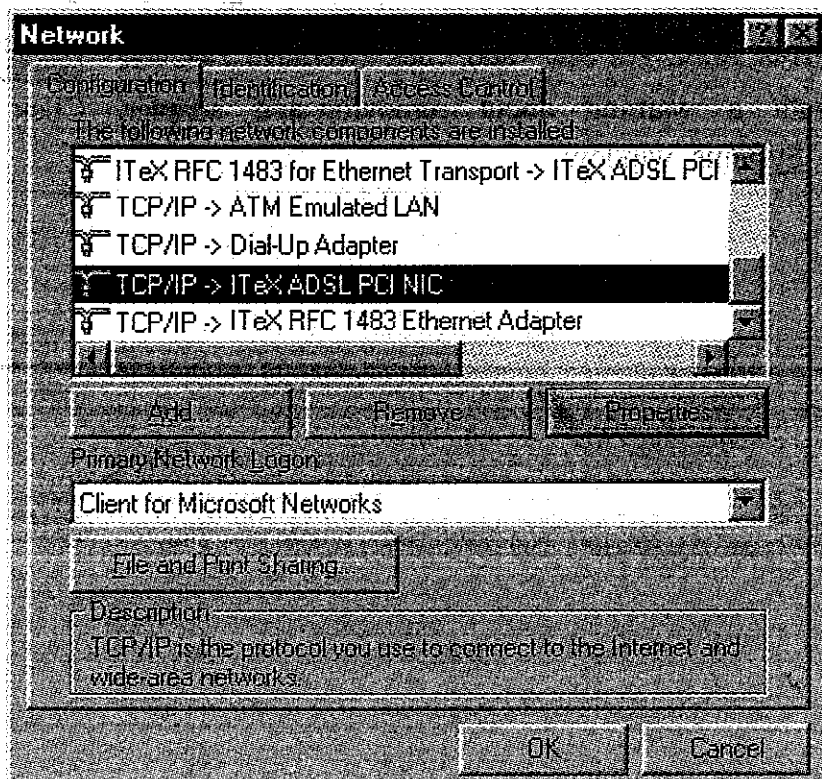
<Step03> To setup a new gateway, enter the setting in the new gateway section and click **Add**. This will add the setting into the installed gateways.



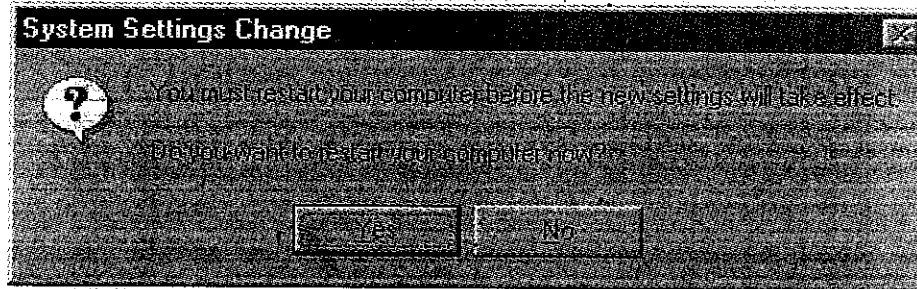
<Step04> To configure the Domain Name Server, simply select the Enable DNS option Enter the Host and Domain settings. Enter the DNS Server search order and click **Add** . Once all the TCP/IP properties have been set, click **OK** to return to the Network window.



<Step05> Click **OK** to close the Network window.



<Step06> Click when prompted "Do you want to restart your computer now?" Configuring the ADSL modem for RFC1577 is completed.



Activating The ADSL Network Modem

For RFC1483 and RFC1577:

Once the drivers are installed and the setup is complete, the ADSL Network Modem is ready to run. Each time the computer is turned on, the modem automatically connects to the central office equipment.

Uninstalling The Apollo2 ADSL Network Modem

To uninstall the software drivers:

- Right click on the "My Computer" icon; select Properties; select Device Manager; Scroll down to "Network Adapters". Open the "Network Adapters" folder.
- Right click "ITeX ADSL PCI NIC" and click "Remove". Click when prompted with a warning about removing and adapter. Click to close the Systems window.

Specifications

1. Protocol Support

OS	Protocol
Windows 98, Windows 2000 Second Edition	RFC1483, RFC2364, RFC1577
NT4.0	RFC1483, RFC2364
Windows 95, 98	RFC1483, RFC2364

2. RJ-11 Connector Pinout

ATU-R ADSL NIC cards have RJ-11 connectors. The RJ-11 port is used for the ADSL line connection. The table below describes the connector pinout for jacks. As a reference, the center two pins of each connector are the TIP and RING pair. For pinout clarification, the center two pins of a RJ-11 connector will be referred to as pins 3 & 4. The neighboring pins will be pins 2 & 5.

ADSL Jack (RJ11 Port)		
Pin	Signal Name	Description
2	NC	
3	Wire A	ADSL TIP
4	Wire B	ADSL RING
5	NC	

Chapter 4 PPPoA Dial-Up Setup for Windows 98

Special Note:

If the ITeX driver for RFC1483 bridged Ethernet is currently installed, then this driver needs to be removed prior to the installation of the Win98 PPPoA protocol driver. Refer to the Apollo 2 ADSL Network modem installation manual for removing the RFC1483 bridged Ethernet driver. Conversely, if the RFC1483 bridged Ethernet is to be reinstalled in the system, the PPPoA driver must be removed before its installation.

Install Procedure:

- **Plug in the Apollo 2 ADSL Network Modem:**

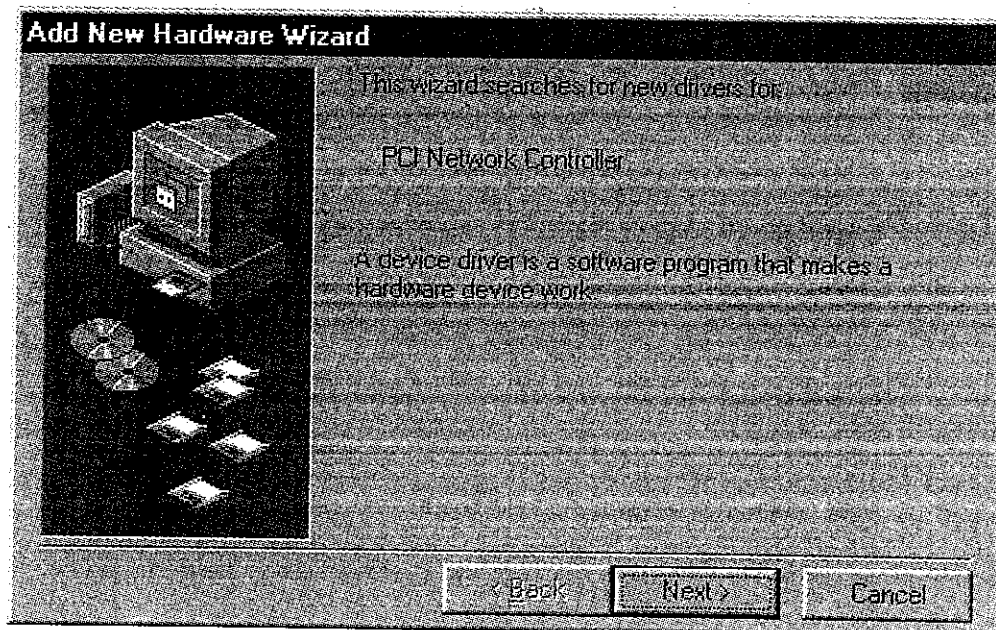
Shutdown the system and plug in the Apollo 2 ADSL Network Modem.

Turn the system on.

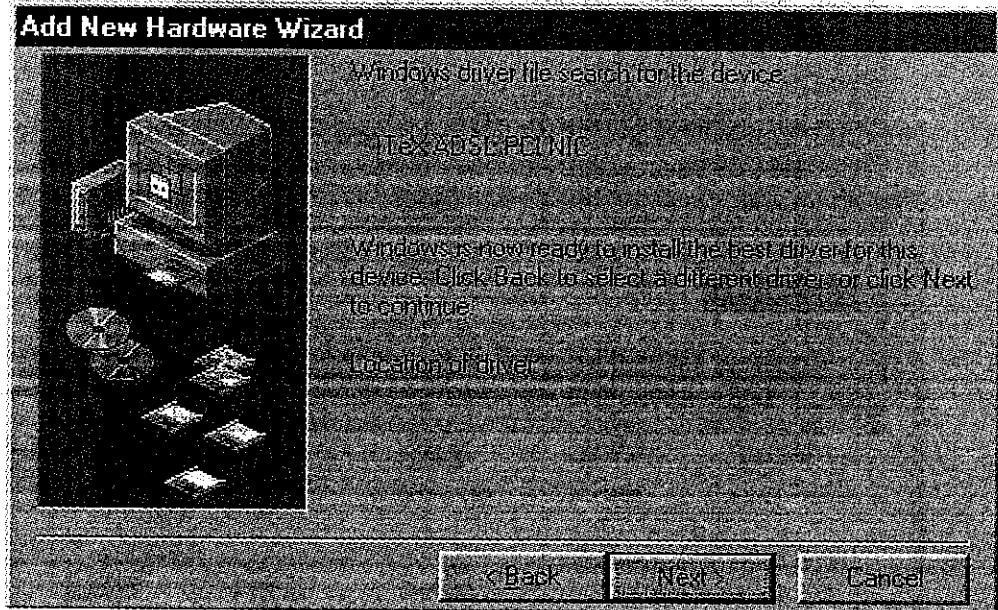
- **Installing the Apollo 2 PPP over ATM driver for Windows 98:**


<Step01> When the system restarts, it will detect the PCI Network Controller.

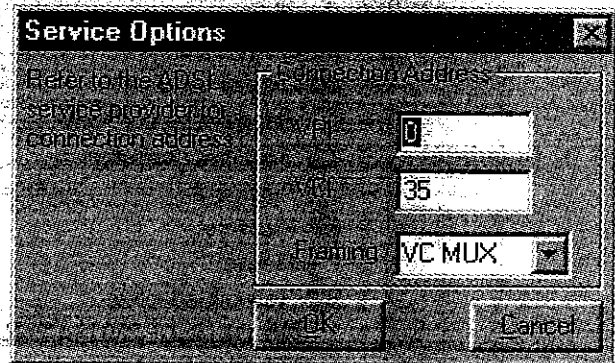
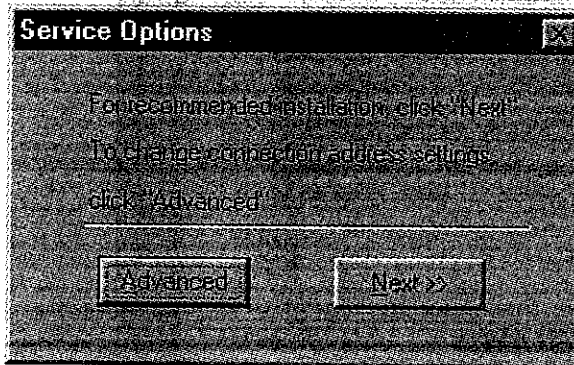
Click



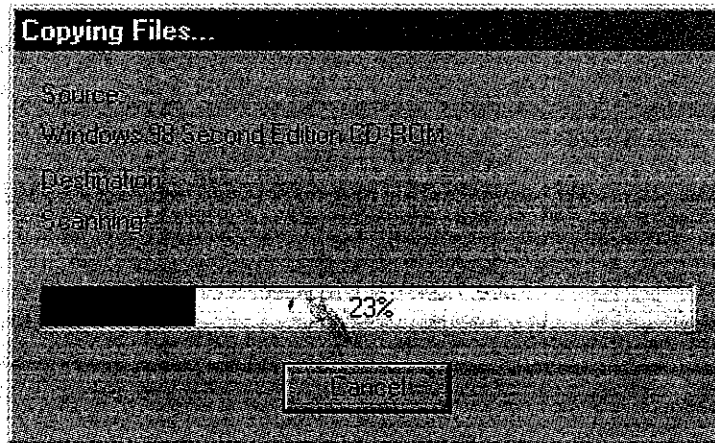
<Step02> Click 



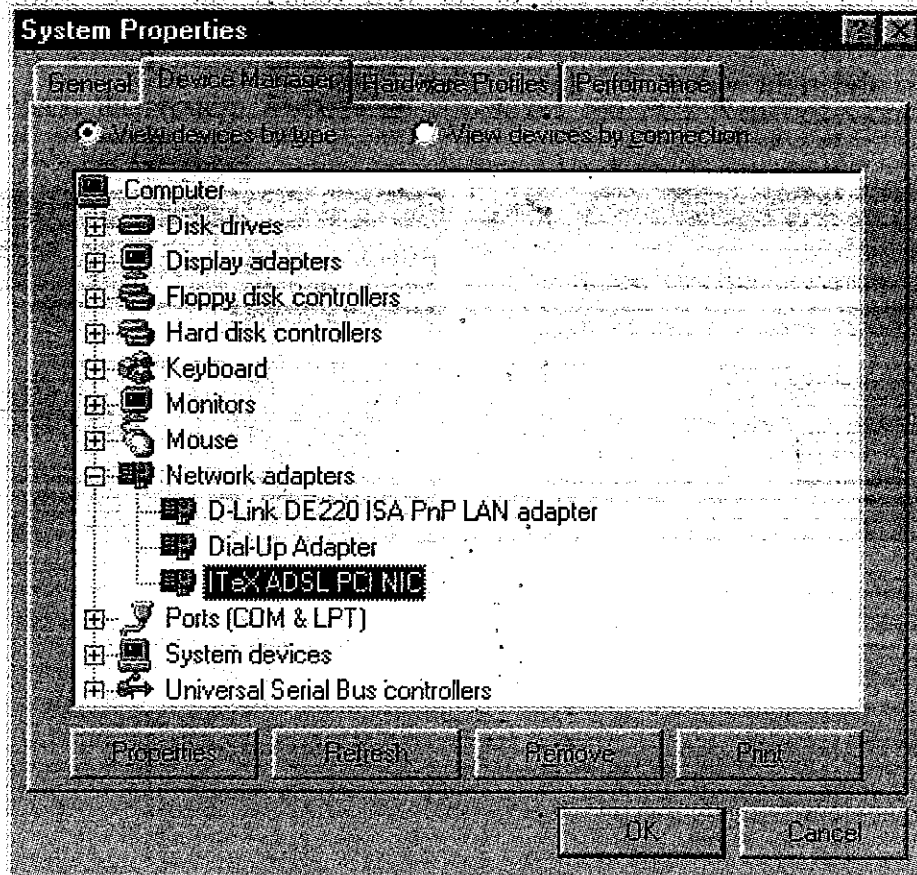
<Step03> Press "Advanced" The driver will require the PVC settings for the VPI and VCI properties to be set in the following window. Type in the right values for them. Click 



<Step04> Windows will start copying the files.

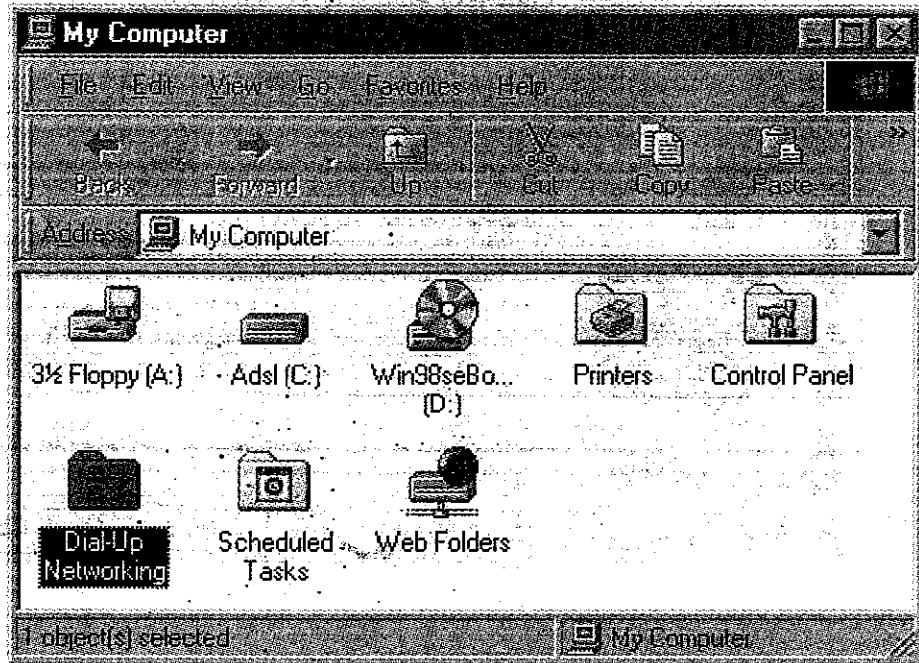


<Step05> After setting up, The Apollo 2 device will show in the Device Manager

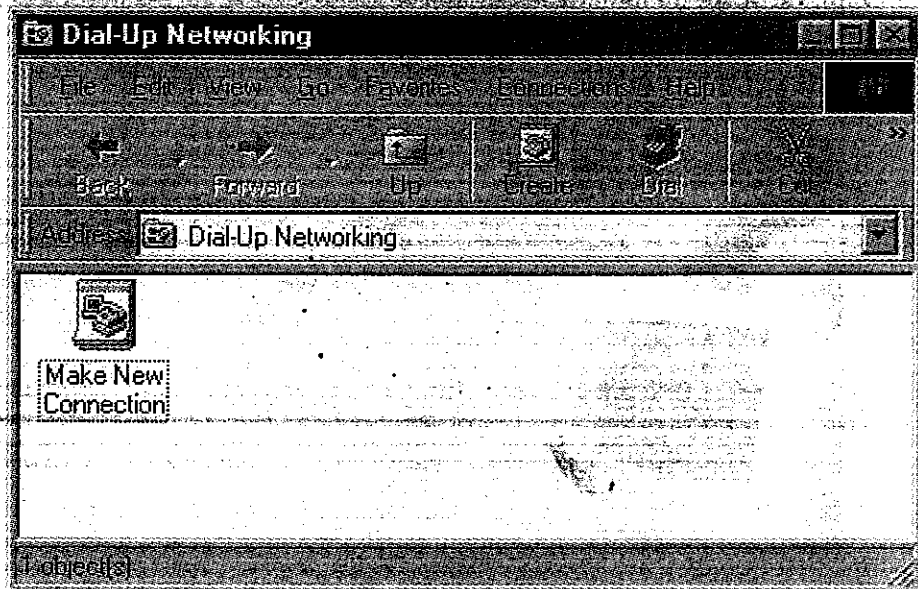



• **Setting up PPPoA dial-up session:**

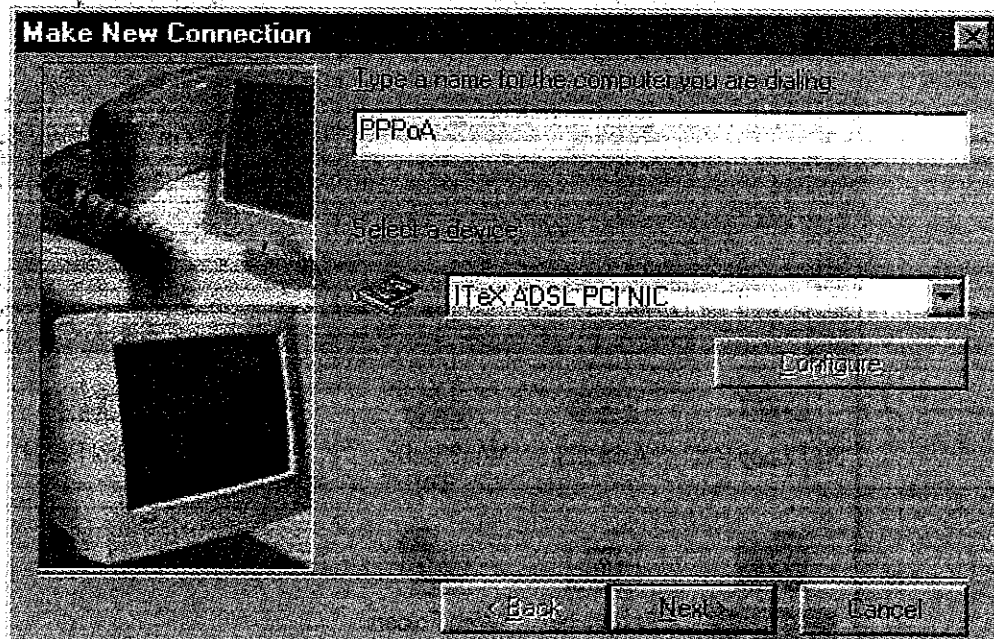
<Step01> Double click My Computer on the desktop. Then double click on the Dial-up networking icon.



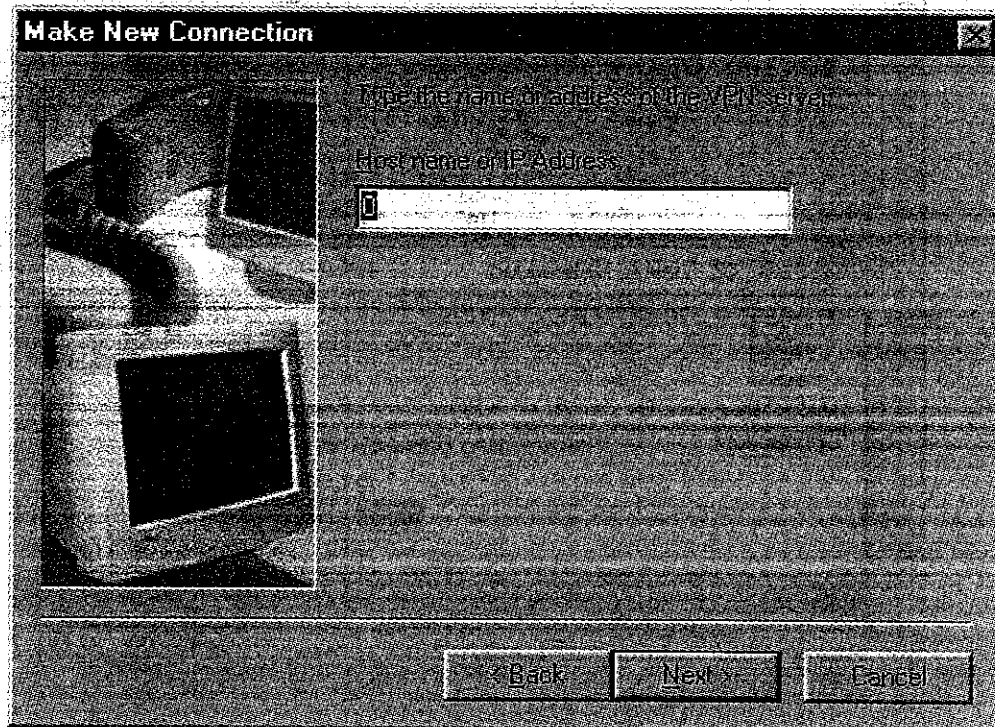
<Step02> Double click Make New Connection to set up PPPoA dial-up.



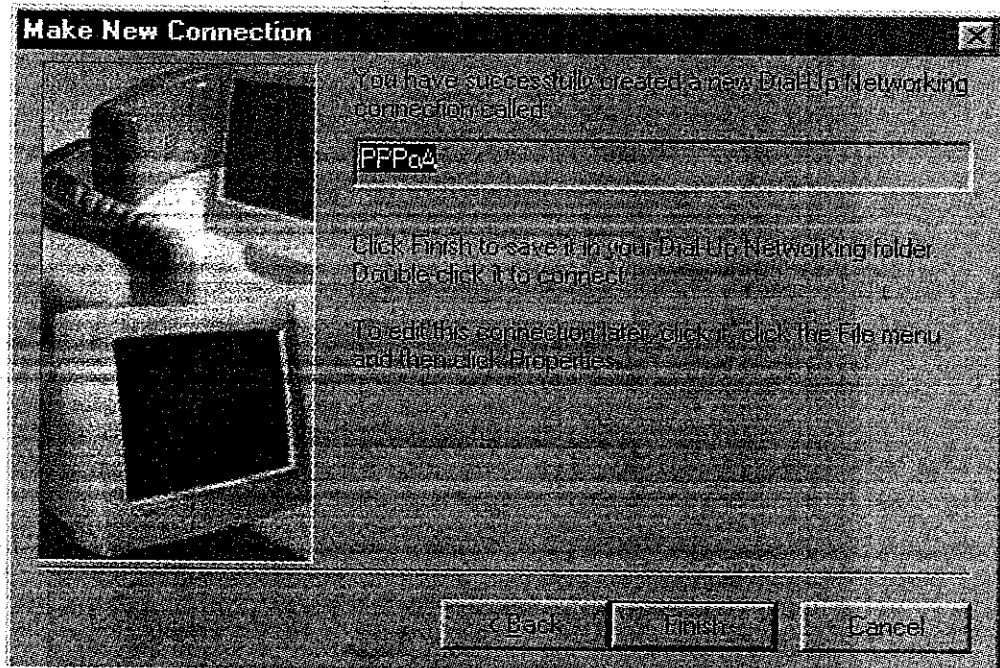
<Step03> Type in the connection name and select ITex ADSL PCI NIC.
Click 



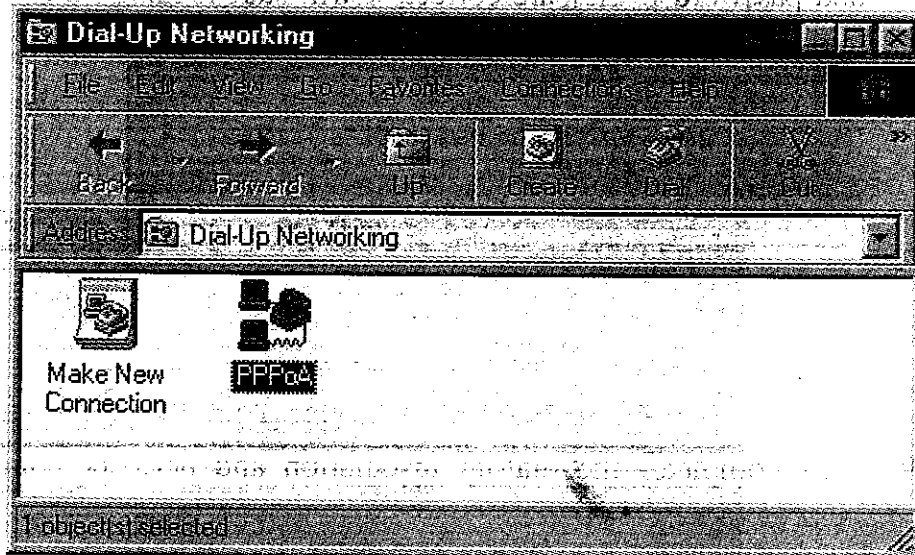
<Step04> Enter 0 for the Host Name /IP Address field. Click 




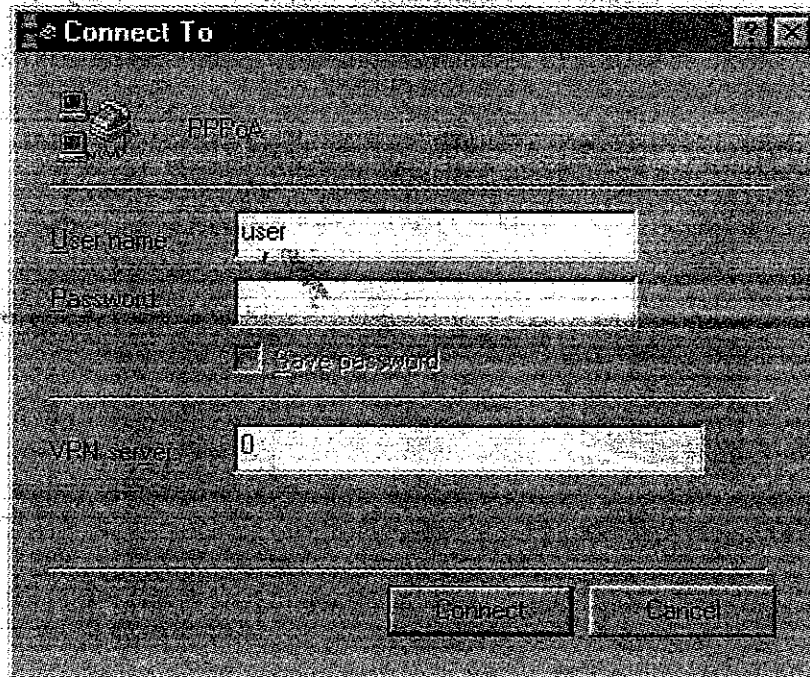
<Step05> Click 



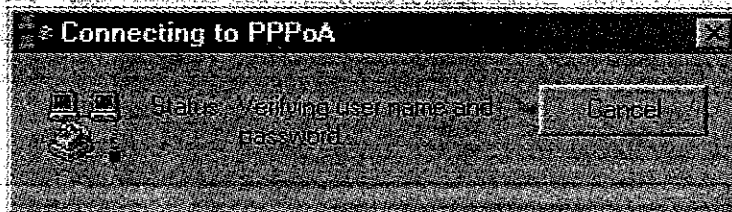
<Step06> A new icon will appear in the Dial - Up Networking.



<Step07> Double click the new icon (Here is PPPoA.) Specify the user name and password. Click 



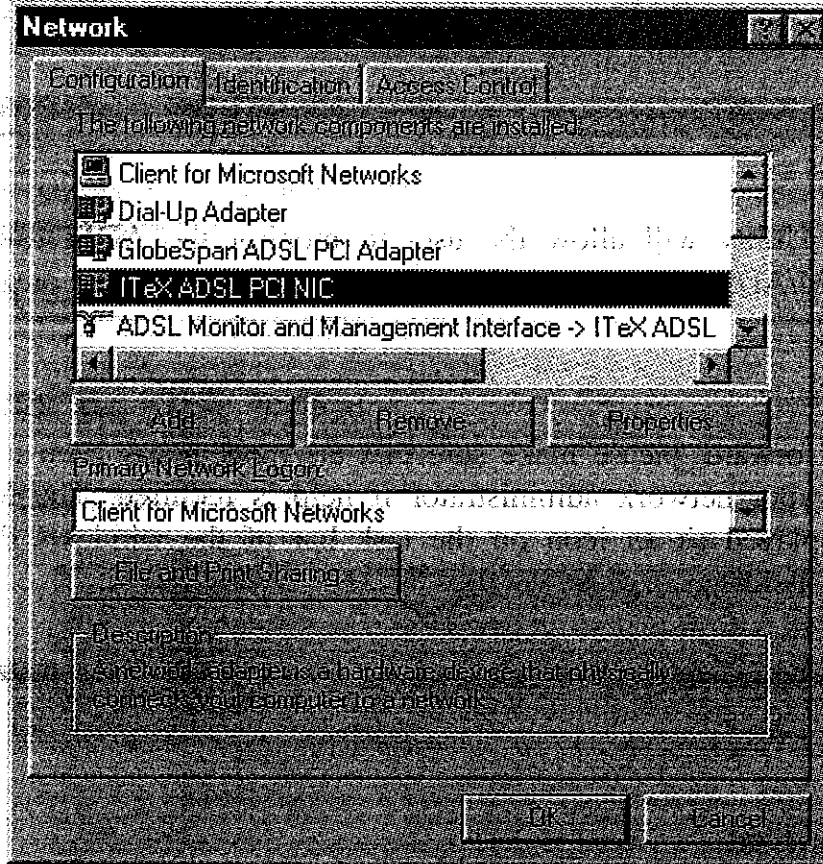
<Step08> It will start to connect to the PPPoA server and check the user name and password. If they are correct, it will start logging on to the network.



<Step09> This completes the dial-up installation and network configuration.

• **Manually Entry of VPI & VCI Settings:**

Note: the values of the VPI and VCI can be manually set up by double clicking the ITeX ADSL PCI NIC in the Network icon in the Control Panel.



Specify the values in the following window. Click 

