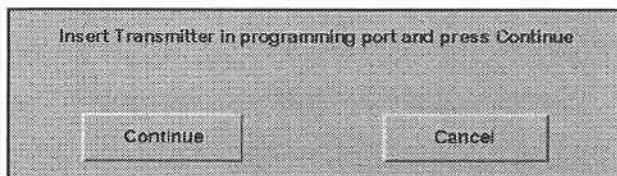


Activating a Spare Transmitter

1. Access the Transmitter Setup menu (see page 2-12).
2. Click on **Program Transmitter** (this activates the following popup).



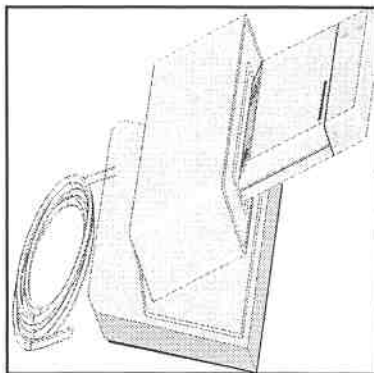
3. Insert the transmitter into the programming port and press **<Enter>** on the keyboard.
4. Click on **Continue** inside the popup to program the transmitter.

Programming the Transmitter

A transmitter is programmed to an operating frequency with the help of a portable programming port.

A transmitter requires reprogramming under the following circumstances:

- if you change the transmitter to a selected receiver channel's operating frequency
- if you switch between 3- and 5-lead monitoring
- after each repair
- if it was corrupted

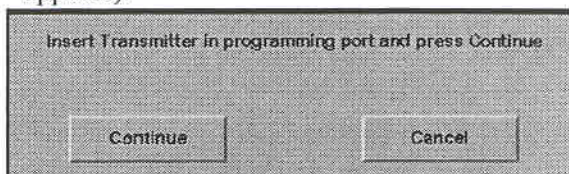


Programming the Transmitter

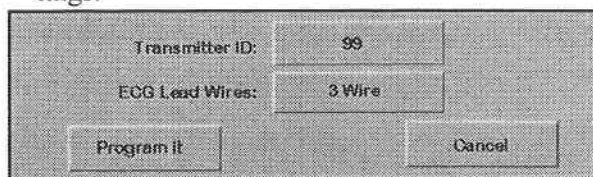
CAUTION: If you are reprogramming a transmitter that was corrupted, refer to page 2-15.

Steps:

1. Make sure the programming port is connected properly to the MULTIVIEW WORKSTATION CPU.
2. Access the Transmitter Setup menu (see page 2-10).
3. Click on **Program Transmitter** (the following popup appears).



4. Insert the transmitter into the programming port. (Remove the protective cap from the transmitter's programming port (see page 2-3) if it was previously inserted to protect the transmitter from water damage.)
5. Click on **Continue** inside the popup. The message *Reading Transmitter Data...* appears. If communication with the transmitter is established, the Program Transmitter popup appears, which displays the current transmitter ID and ECG lead settings.



NOTE: If communication with the transmitter cannot be established, a popup with the message *Transmitter Read Error. No transmitter in programming port. Do you wish to retry?* appears. Reinsert the transmitter and press on **Accept** inside the popup to retry. If the message persists, contact your Biomed.

Continued on next page...

6. Select either the 3-lead or 5-lead mode in the Program Transmitter window.
7. Click on **Program it**. The message *Programming transmitter...Warning, Do Not Remove Transmitter from Service Port During Programming* is displayed. As soon as the settings and the new operating frequency are written to the transmitter successfully, the message disappears and you can remove the transmitter from the programming port.

NOTE: If the data transfer was not successful, the message *Setup Data Write Error; try again* is displayed in the CLUSTERVIEW status area. Try again. If the message reappears, contact your Biomed.

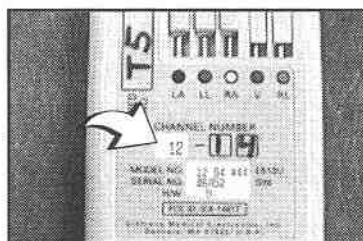
rogramming a Corrupted Transmitter

Special caution is required when you reprogram a transmitter that has been corrupted.

Steps:

1. Follow steps 1 - 3 for programming a transmitter (see page 2-14).
2. Press **<Enter>** on the keyboard. If you are restoring a corrupted transmitter, the following popup appears: *Restoring Defaults - Programming transmitter to TV channel xx. Do you wish to continue?*
3. Make sure that the channel number of the transmitter (see arrow) matches the TV channel number in the popup.

CAUTION: You will have to take the transmitter out of service and send it back to Siemens for repair if you click on **Accept** and the two numbers do not match.



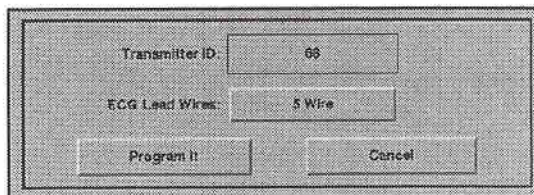
4. Click on **Accept** if the two numbers match; click on **Cancel** if the two numbers do not match and contact your Biomed.

ing the Lead Cable Type

You can switch from 3-lead to 5-lead cable type (or vice versa) in the Transmitter Setup menu.

Steps:

1. Access the Transmitter Setup menu (see page 2-10).
2. Make sure the programming port is connected properly to the MULTIVIEW WORKSTATION CPU.
3. Insert the transmitter into the programming device and wait until the following popup appears.



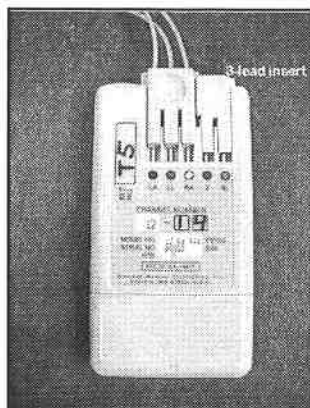
4. Click on **ECG Lead Wires** to select either the 3-lead or 5-lead monitoring mode.
5. Click on **Accept** to store your selection or on **Undo** to revert to the previous setting.

Attaching the Transmitter to the Patient

After the transmitter is properly programmed, connect it to the patient as follows:

Steps:

1. Verify that the transmitter is programmed for the intended monitoring mode (3-lead or 5-lead cable). Reprogram it if necessary (see page 2-13).
2. Apply electrodes according to the desired configuration.
3. Connect the lead block to the patient's transmitter.



About the Transmitter

► **NOTE:** Connect the 3-lead insert to the transmitter if you use a 3-lead set to protect the two otherwise exposed pins.

4. Attach the lead wires to the electrodes.
5. Admit the patient to the channel for which the transmitter is programmed (see chapter 7 for details).

Transmitter Messages

The following table lists various transmitter-related messages that may appear during monitoring of a telemetry patient.

Transmitter Messages

Alarm Message		Alarm Grade	Description	Action
Area	Status/Information Area			
> >> value> ue> >> >>	STAFF ALERT	SER	The patient has pressed the staff alert button on the transmitter. Note: this message remains on the screen until you acknowledge it.	•Check the patient.
<> blank> nk> <> <>	TRANSMITTER FAILURE	ADV	The transmitter has detected an internal error and is defective.	•Call your Biomed. •Replace the transmitter.
<> blank> nk> <> <>	TRANSMITTER NO SIGNAL	ADV	The transmitter cannot be detected by the receiver.	•Make sure the patient is not outside the antenna's range. •Check the cable connections. •Replace the battery.
<> blank> nk> <> <>	TRANSMITTER INTERFERENCE	ADV	Transmitter experiences interference.	•Make sure the patient is not outside the antenna's range.
<> blank> nk> <> <>	TRANSMITTER ID INCORRECT	ADV	The transmitter ID does not match the programmed ID.	•Reprogram the transmitter with the correct ID. •Make sure that two transmitters have not been programmed to the same ID.

Alarm Message		Alarm Grade	Description	Action
Parameter Area	Status/Information Area			
blank> <blank> min: <blank> : <blank> <blank> <blank>	TRANSMITTER LOW BATTERY	ADV	Transmitter's battery charge is low. Note: This message remains until the battery is replaced.	• Replace the battery.

Programming Messages

The following technical messages may appear at the MULTIVIEW WORKSTATION during the programming of a transmitter.

Message	Description	Action
Transmitter in Programming Port	The MULTI-VIEW WORKSTATION cannot communicate with the transmitter.	<ul style="list-style-type: none"> • Make sure the programming port is connected to the MULTIVIEW WORKSTATION CPU. • Make sure the transmitter is equipped with a good battery and is inserted all the way into the programming port. • Verify the above.
Programming transmitter...Warning: Do Not Remove Transmitter from Service Port During Programming	The new settings are written to the transmitter.	Wait until the message disappears.
Setup Data Write Error, try again	The transmitter cannot accept the new settings (could be a faulty transmitter).	<ul style="list-style-type: none"> • Program the transmitter again. • Contact your Biomed if it fails again.