

SLDA Series Chip Antenna

Applications

The SLDA-2R450G-01 is a small size, LTCC-tech based chip antenna specifically designed for 2450MHz WLAN and Blue-tooth applications, etc.

Specifications

Part Number	Band Width	Peak Gain (V-XZ)	Average Gain(V-XZ)	VSWR (in BW)	Impedance
SLDA-2R450G-S1	2400-2500MHz	3.0dBi typ	1.0dBi typ.	< 2	50 Ohm

Operating Temperature Range : -40 ~ +85 °C

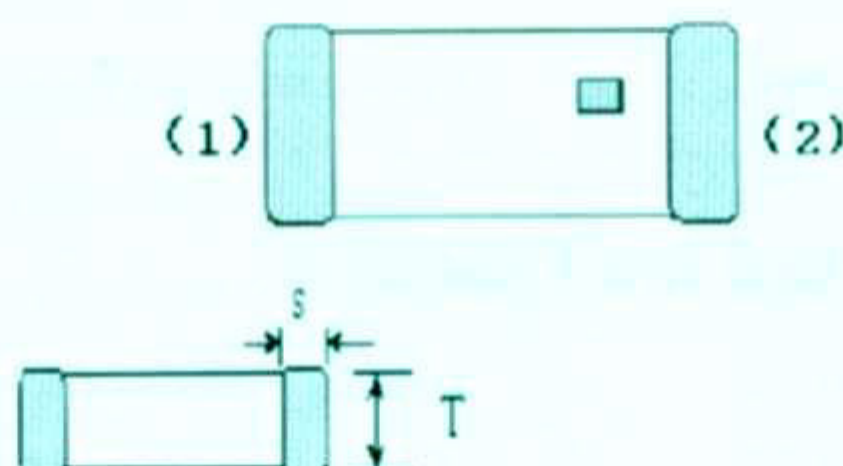
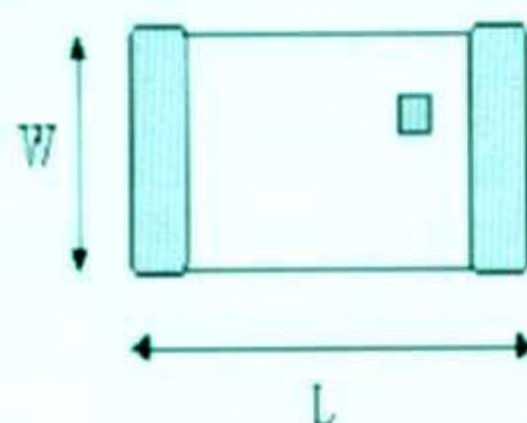
Storage Temperature Range : -40 ~ +85 °C

Power Capacity : 3W max.

Outline and Dimensions

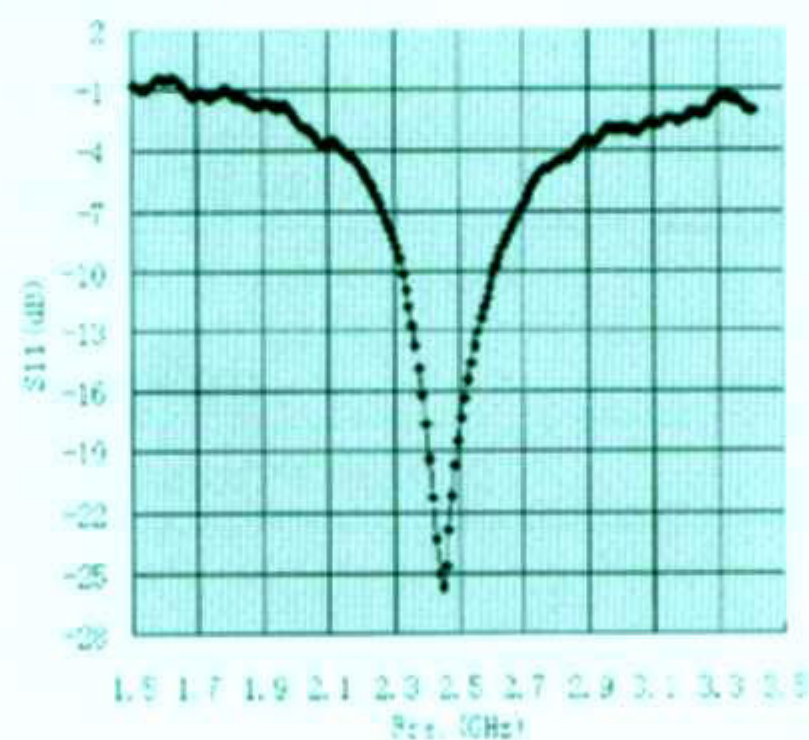
(unit: mm)

(1)	NC
(2)	Feeding Point

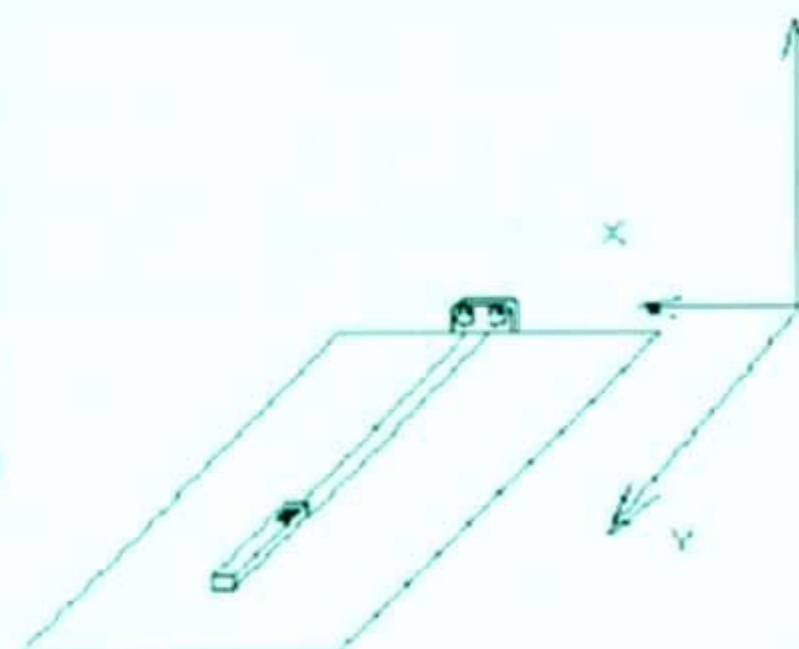


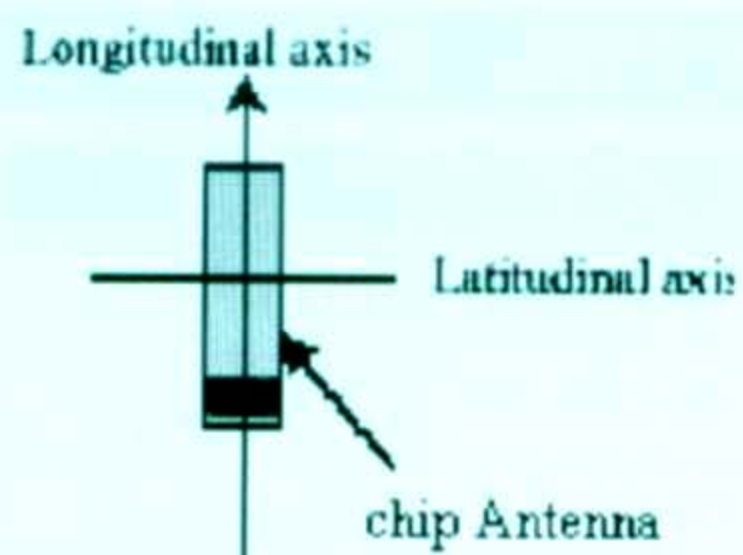
Mark	W	L	T	s
Dimension	2.0±0.2	9.0±0.2	1.0±0.1	0.3±0.2

Return Loss

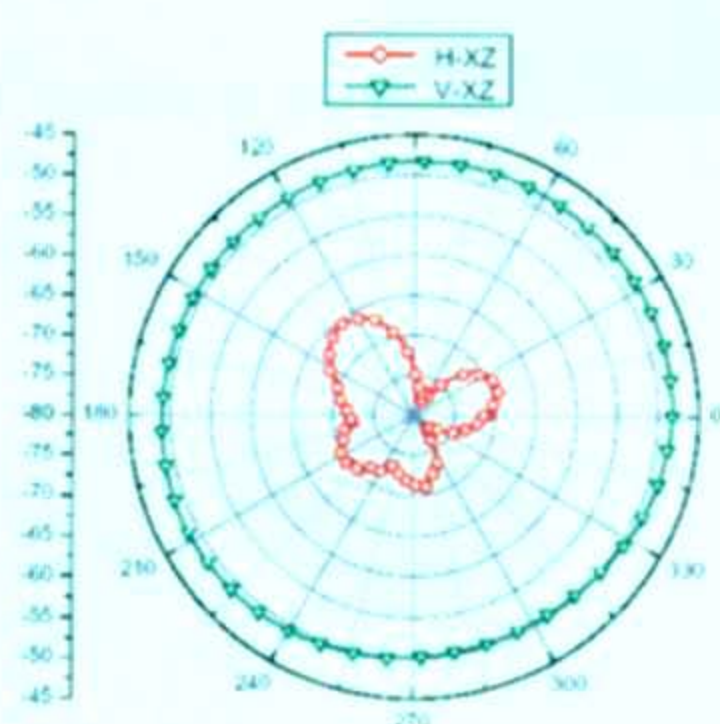


Directivity

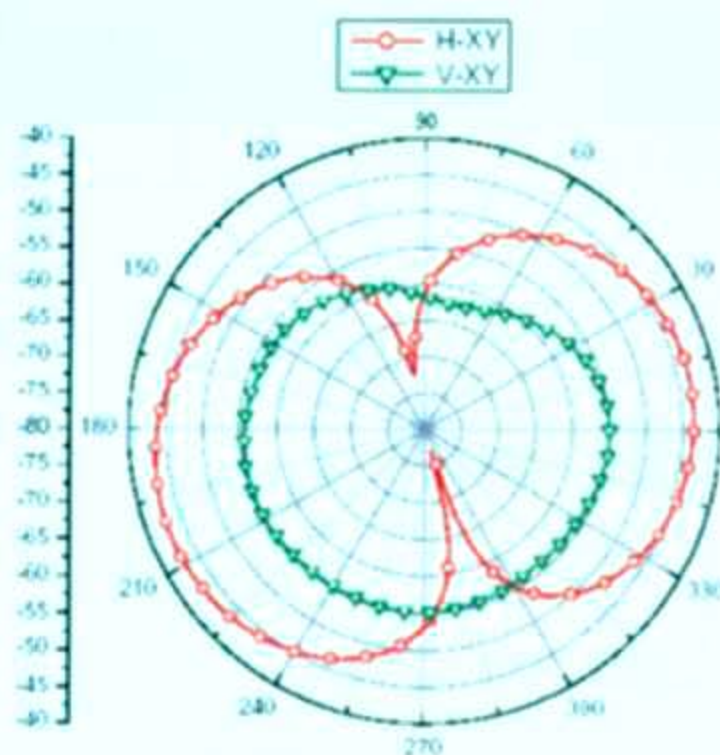




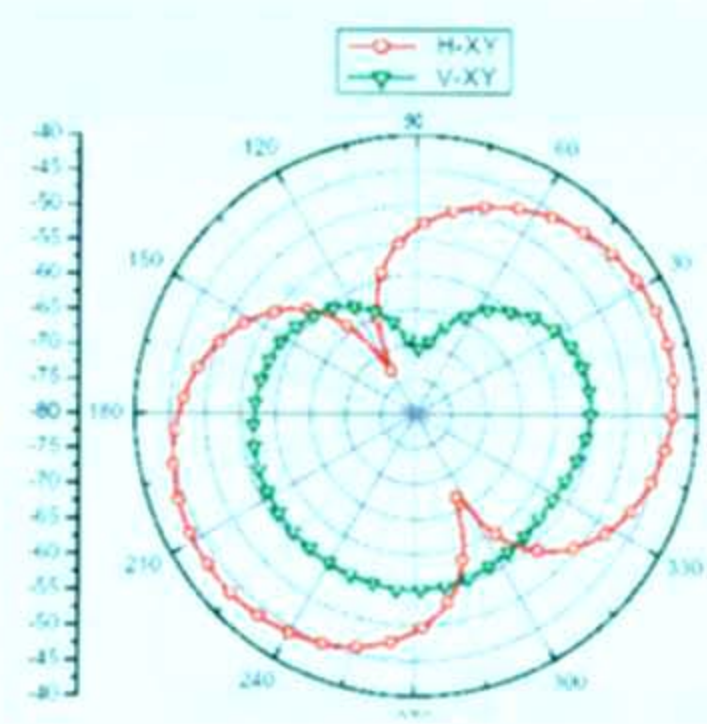
Coordinates system for Measurement



XZ plane radiation Pattern



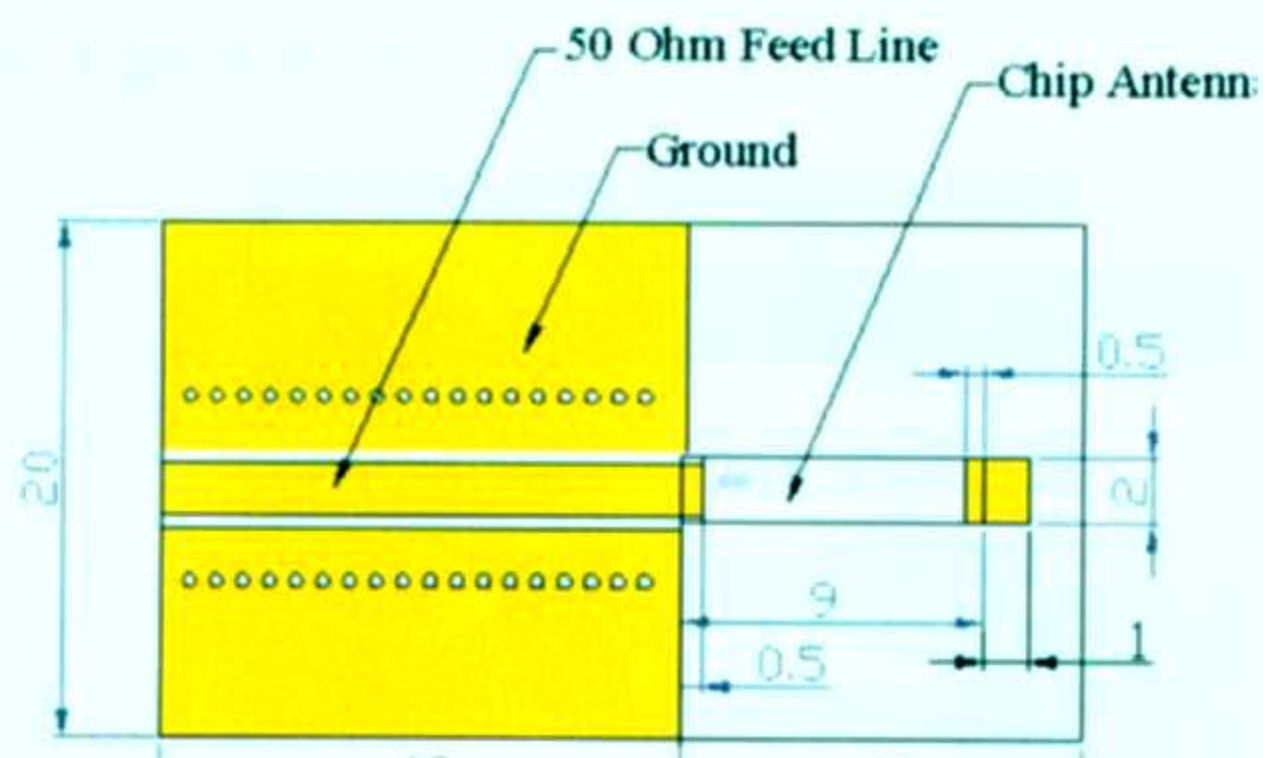
XY plane radiation Pattern



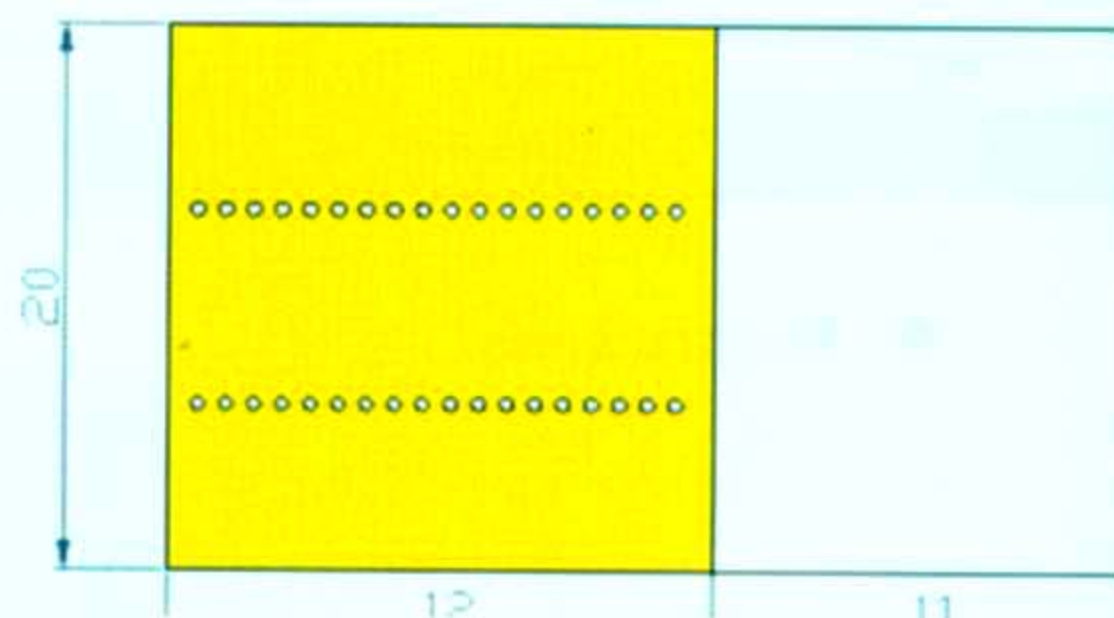
YZ plane radiation Pattern

● Evaluation board and land pattern

(unit: mm)

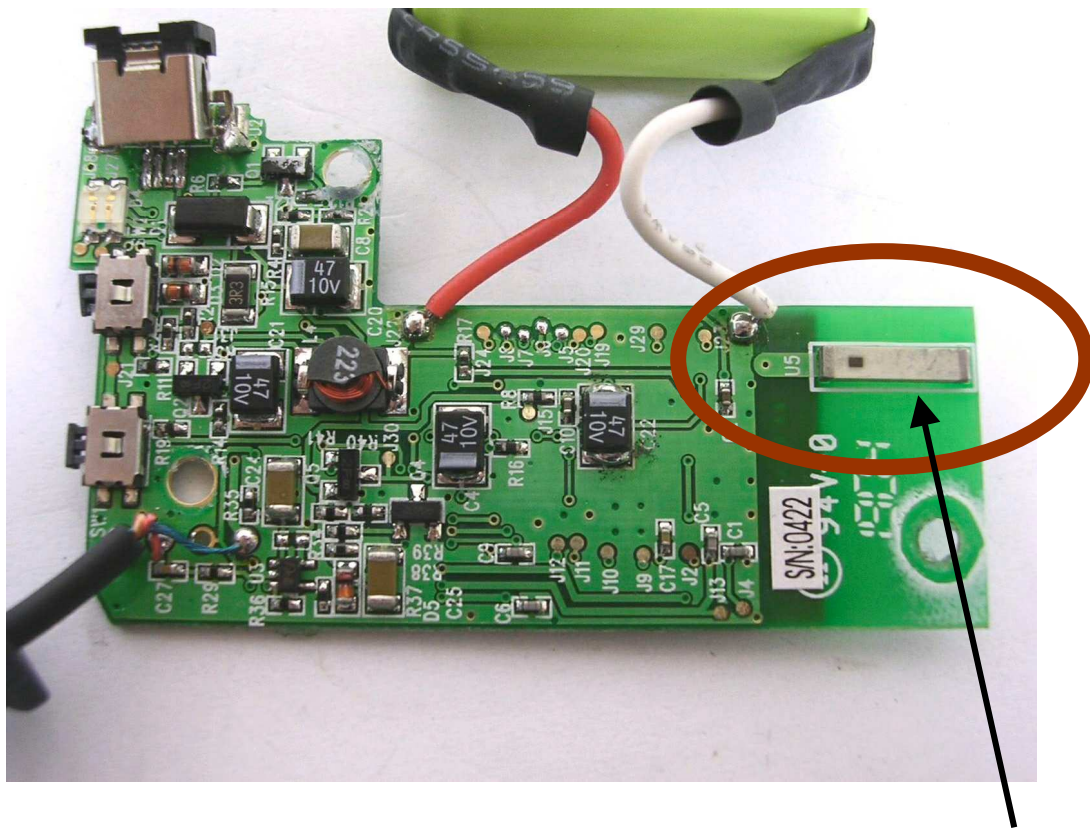


Evaluation board



GND pattern (Backside of the substrate)

Antenna Photo and Position



Chip Antenna