



ethertronics
shaping antenna technology™

GB04001 Antenna Design Specification

ET Part No: GB04001-A01
Frequency Band: 2.4-2.485GHz

March 28th, 2005

Confidential
Rev. 1.1

Ethertronics Inc.
9605 Scranton Road, Suite 300
San Diego, CA 92121
(858) 550-3820 Office (858) 550-3821 FAX

TABLE OF CONTENTS

1. Summary.....	3
1.1. Antenna Performance (GB14001-M03) – Efficiency, Power, Impedance	3
1.2. Antenna Configuration.....	4
1.3. Chamber Measurement Configuration.....	6
2. Bluetooth Measurement in Notebook.....	7
2.1. Input Return Loss (Ethertronics GB04001-M03).....	7
2.2. Efficiency (Ethertronics GB04001-M03)	8
.....	8
2.3. Peak Gain (Ethertronics GB04001-M03)	9
2.4. Radiation Pattern Ethertronics GB04001-M03 in Notebook)	10
2.4.1. E1 Plane ($\varphi=0$ degree)	10
2.4.2. E2 Plane ($\varphi=90$ degree)	10
2.4.3. H Plane ($\theta=90$ degree)	11
2.5. Radiation Pattern Ethertronics GB04001-M03 in Notebook)	12
2.5.1. E1 Plane ($\varphi=0$ degree)	12
2.5.2. E2 Plane ($\varphi=90$ degree)	12
2.5.3. H Plane ($\theta=90$ degree)	13
3. Mechanical.....	14
3.1. Mechanical Assembly Drawing, Lead-Free Status.....	14

2005 © COPYRIGHT ETHERTRONICS INC.

This document is issued by Ethertronics Inc. (hereinafter called Ethertronics) in confidence, and is not to be reproduced in whole or in part without the prior written permission of Ethertronics. The information contained herein is the property of Ethertronics and is to be used only for the purpose for which it is submitted and is not to be released in whole or in part without the prior written permission of Ethertronics.

1. Summary

1.1. Antenna Performance (GB14001-M03)

	<u>Open</u>	<u>closed</u>
Average Efficiency (%)	34	25
Peak Efficiency (%)	55	42
Peak Gain(dBi)	2.2	1.0

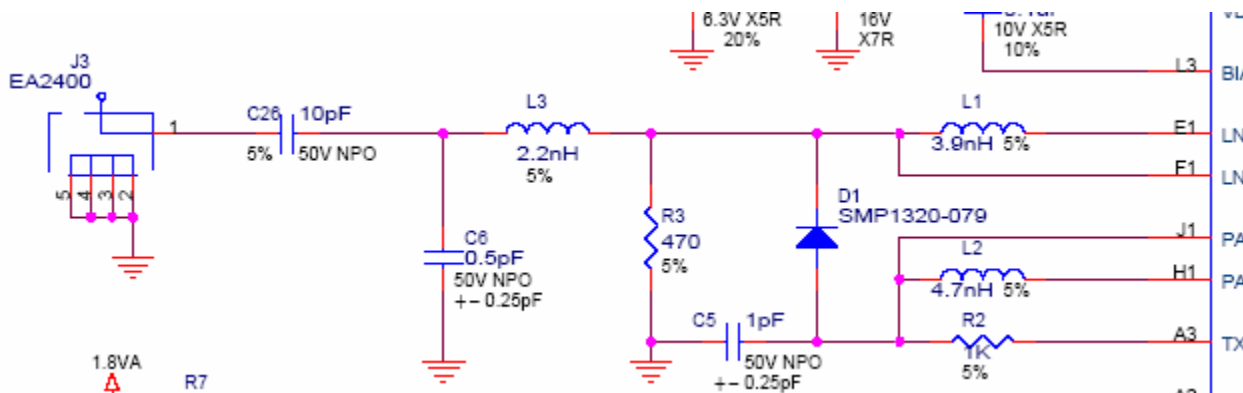
The original performance data on Ethertronics GB14001-M02 was tuned slightly high in frequency.

The presented data is on Ethertronics GB04001-M03 corrects a frequency shift out of the Blue tooth operating band.

Peak Gain has been included per customer request

Data has been taken mounted in a Notebook computer with the LCD screen opened and closed

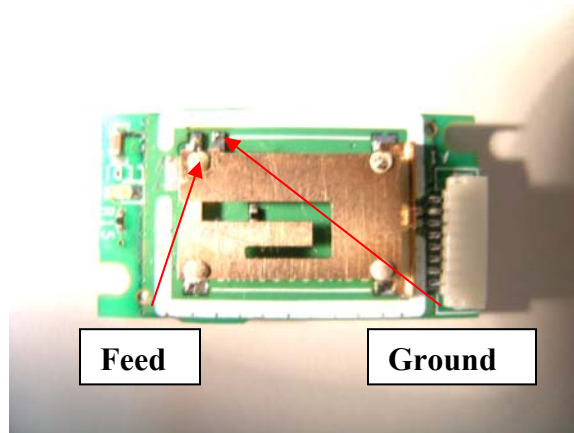
The original matching circuit shown below has been removed and replaced by 0 ohm resistors for both Ethertronic antennas (Brass-Board and GB01004-M03).



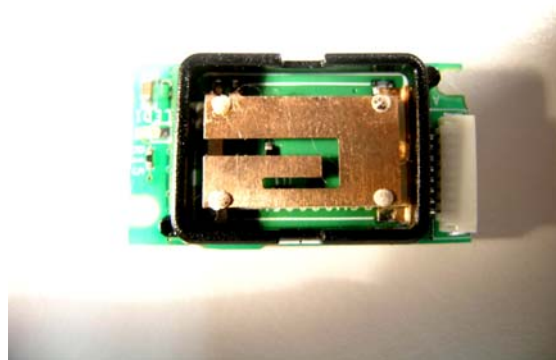
Item	Spec
Antenna Impedance	50 Ohms
Power Rating	5 watts

Ethertronics Inc.
 9605 Scranton Road, Suite 300
 San Diego, CA 92121
 (858) 550-3820 Office (858) 550-3821 FAX

1.2. Antenna Configuration



Ethertronics mounted on module



Ethertronics antenna on module with plastic border

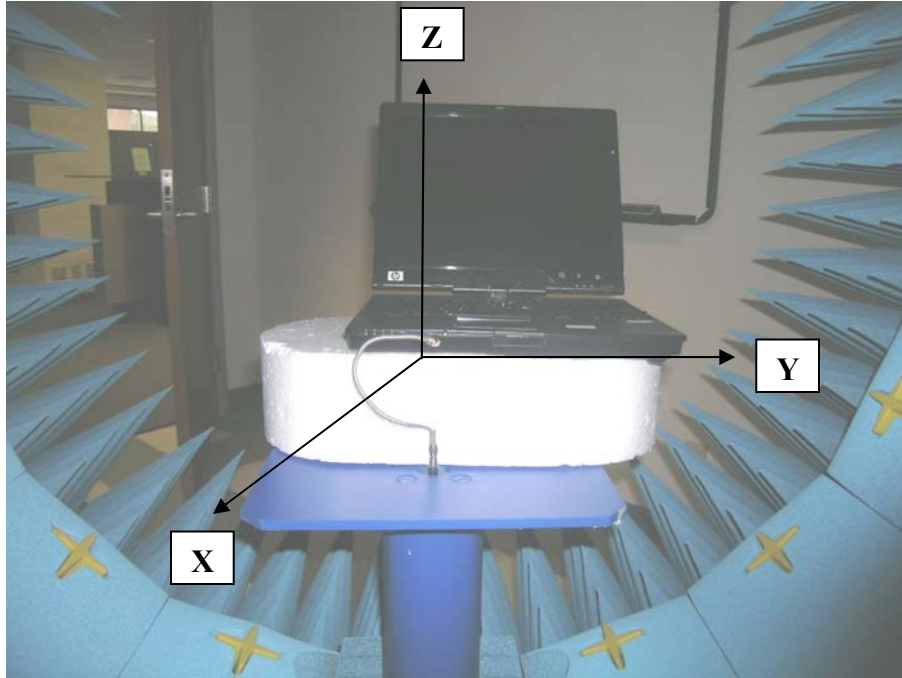


Antenna Module mounted in plastic Holder



Antenna Module/Holder Attached to Notebook

1.3. Chamber Measurement Configuration



Ethertronics Inc.
9605 Scranton Road, Suite 300
San Diego, CA 92121
(858) 550-3820 Office (858) 550-3821 FAX

2. Bluetooth Measurement in Notebook

2.1. Input Return Loss (Ethertronics GB04001-M03)

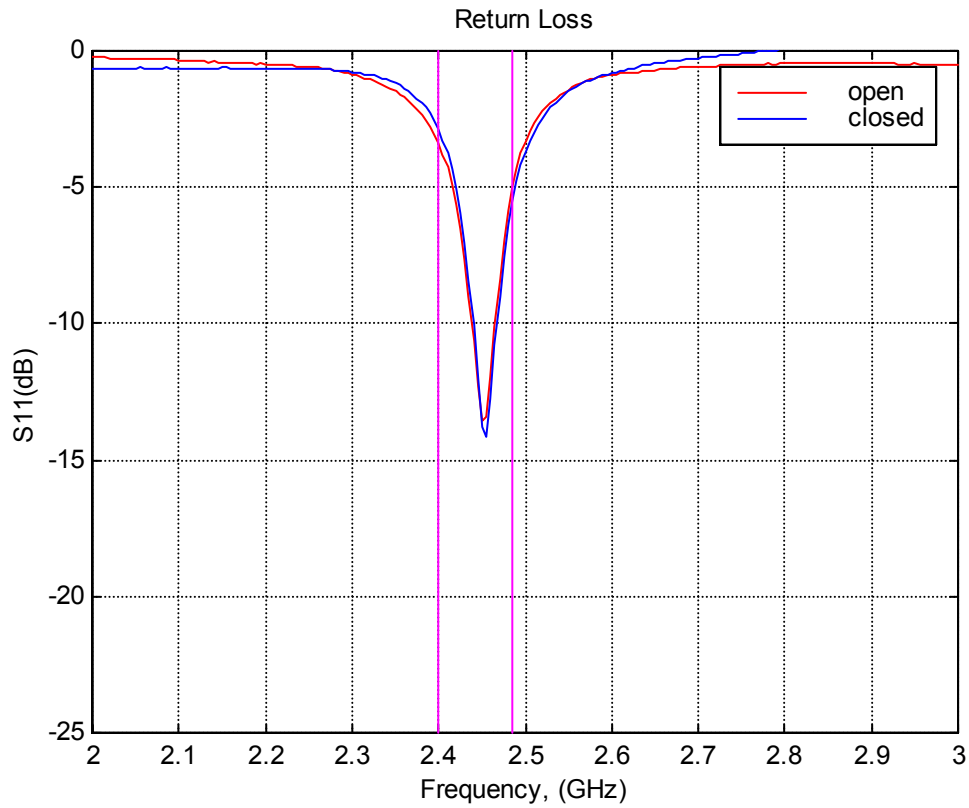


Figure 1: Input Impedance - RL.

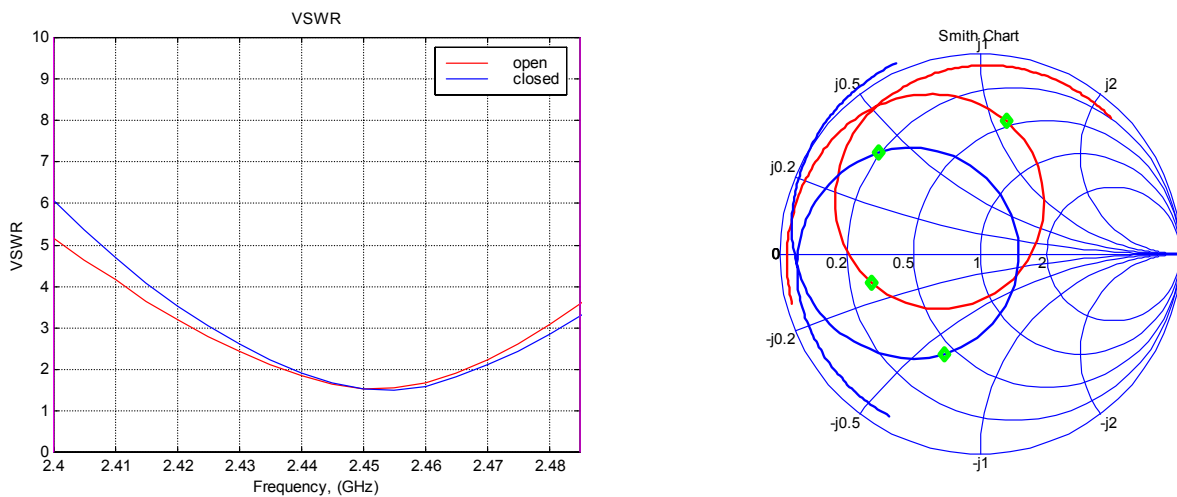
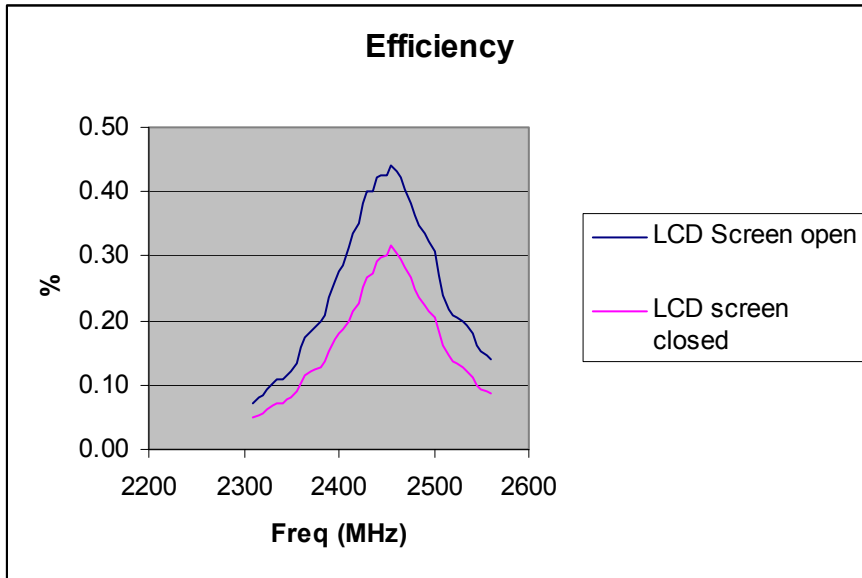


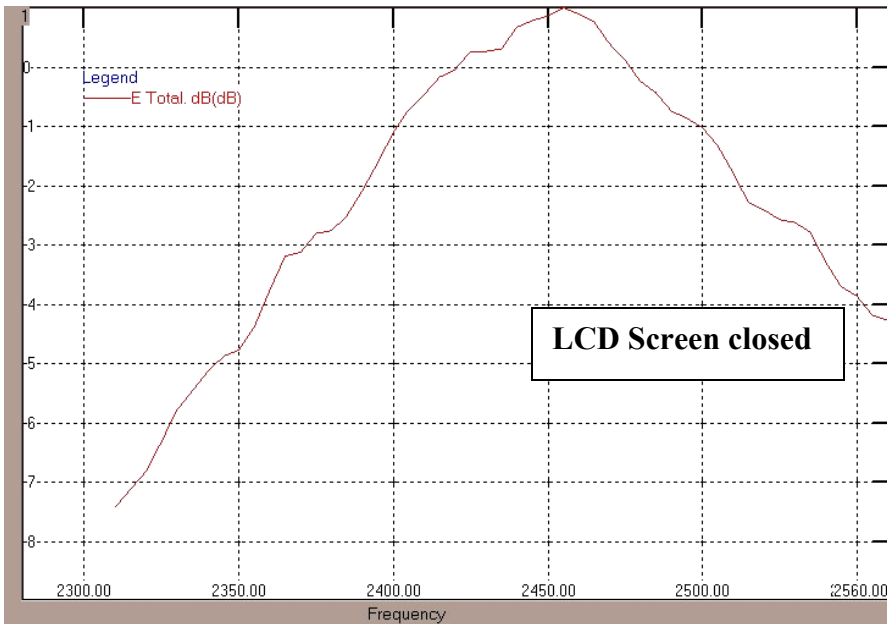
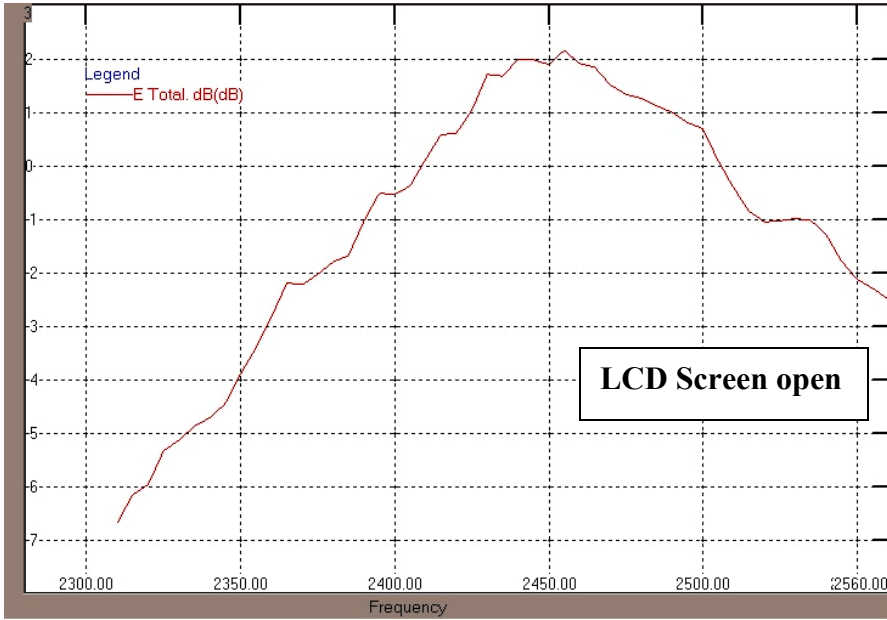
Figure 2: Input Impedance - VSWR and Smith chart.

Ethertronics Inc.
9605 Scranton Road, Suite 300
San Diego, CA 92121
(858) 550-3820 Office (858) 550-3821 FAX

2.2. Efficiency (Ethertronics GB04001-M03)



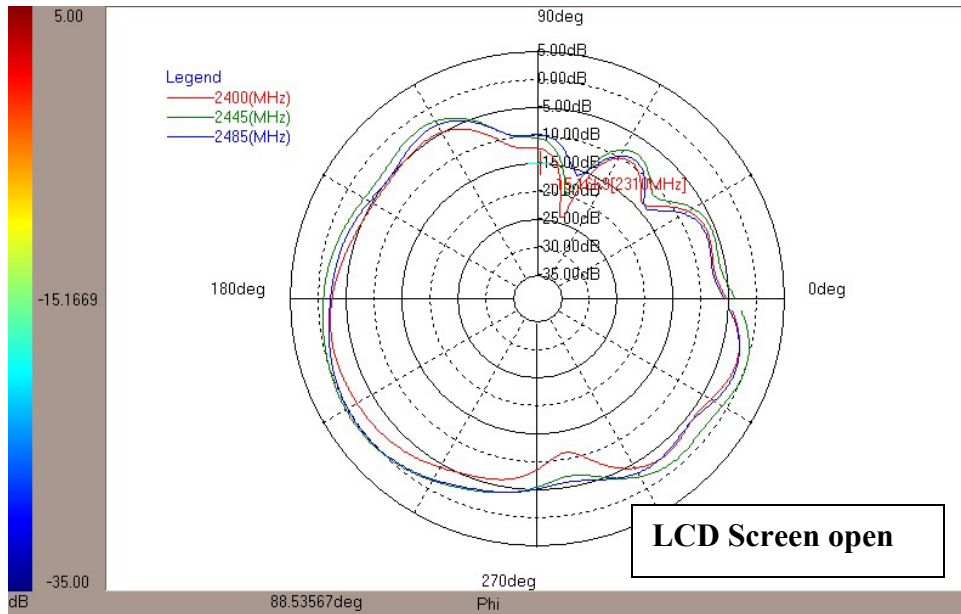
2.3. Peak Gain (Ethertronics GB04001-M03)



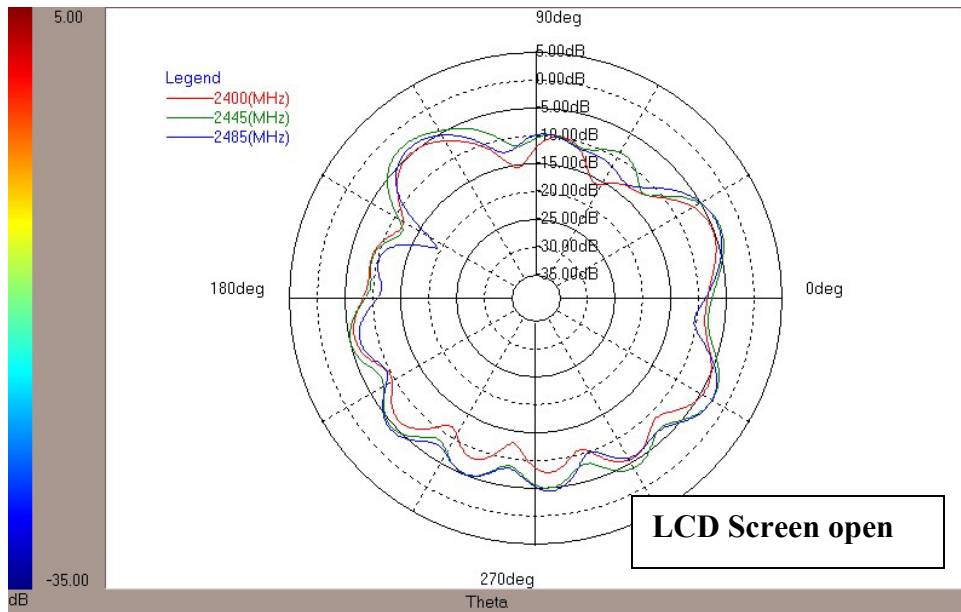
Ethertronics Inc.
9605 Scranton Road, Suite 300
San Diego, CA 92121
(858) 550-3820 Office (858) 550-3821 FAX

2.4. Radiation Pattern Ethertronics GB04001-M03 in Notebook)

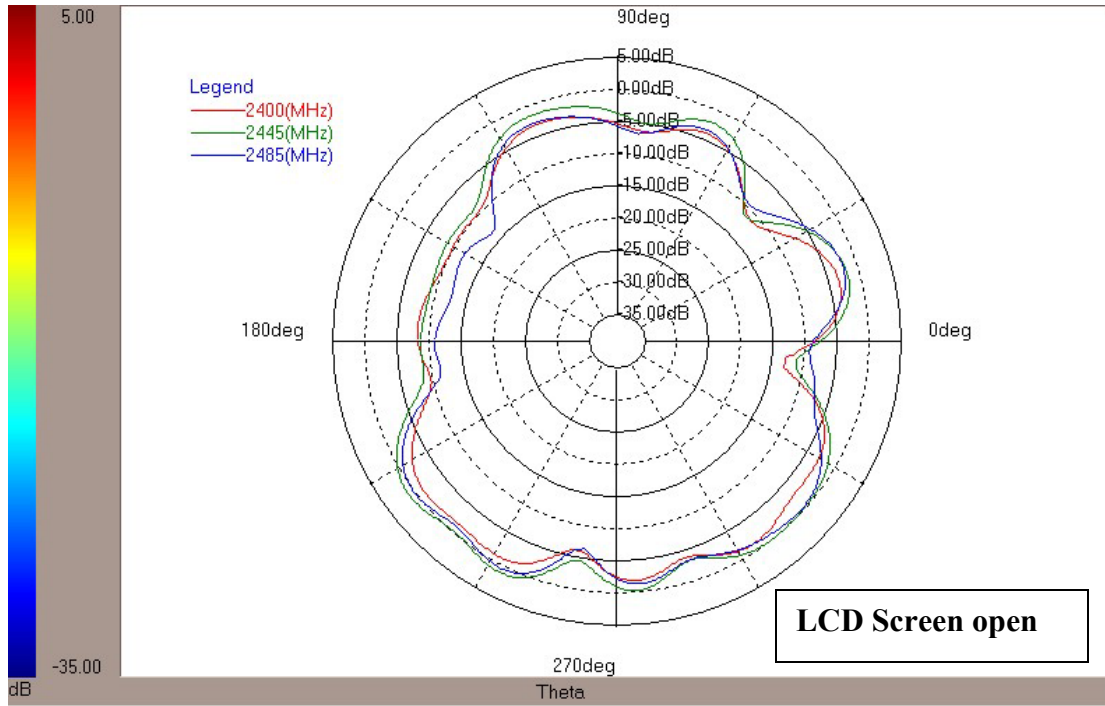
2.4.1. E1 Plane ($\phi=0$ degree)



2.4.2. E2 Plane ($\phi=90$ degree)

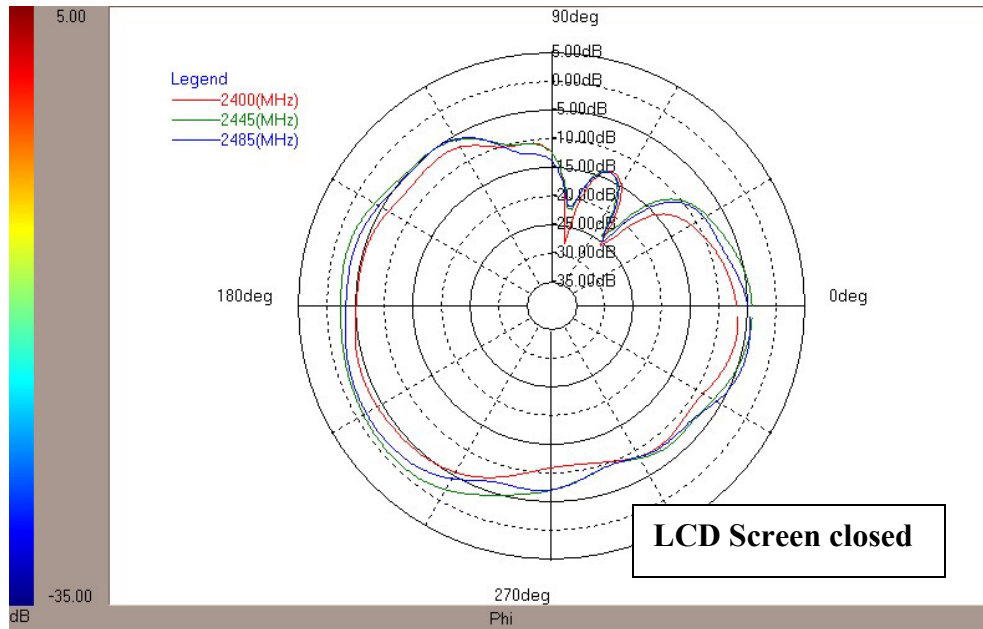


2.4.3. H Plane ($\theta=90$ degree)

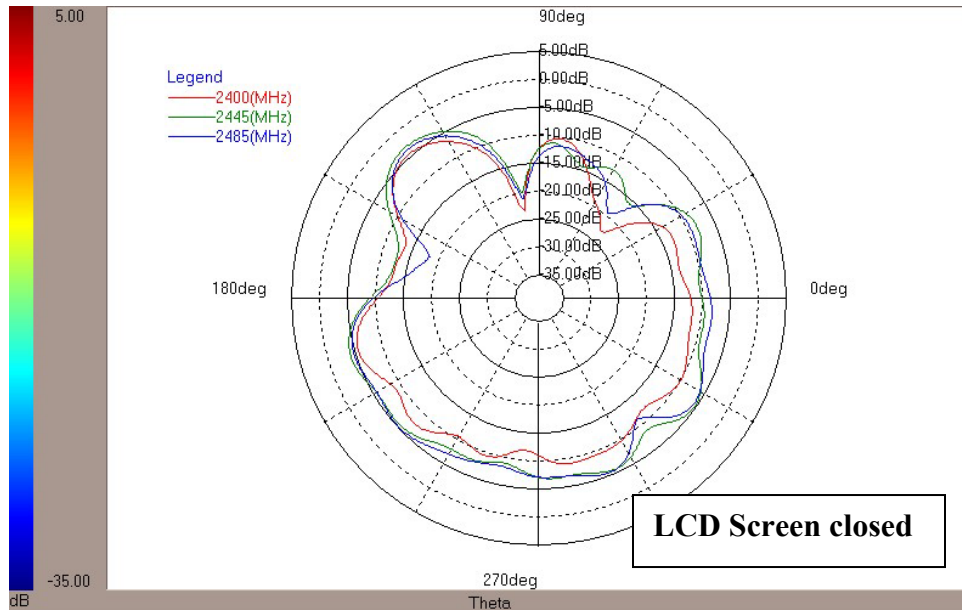


2.5. Radiation Pattern Ethertronics GB04001-M03 in Notebook)

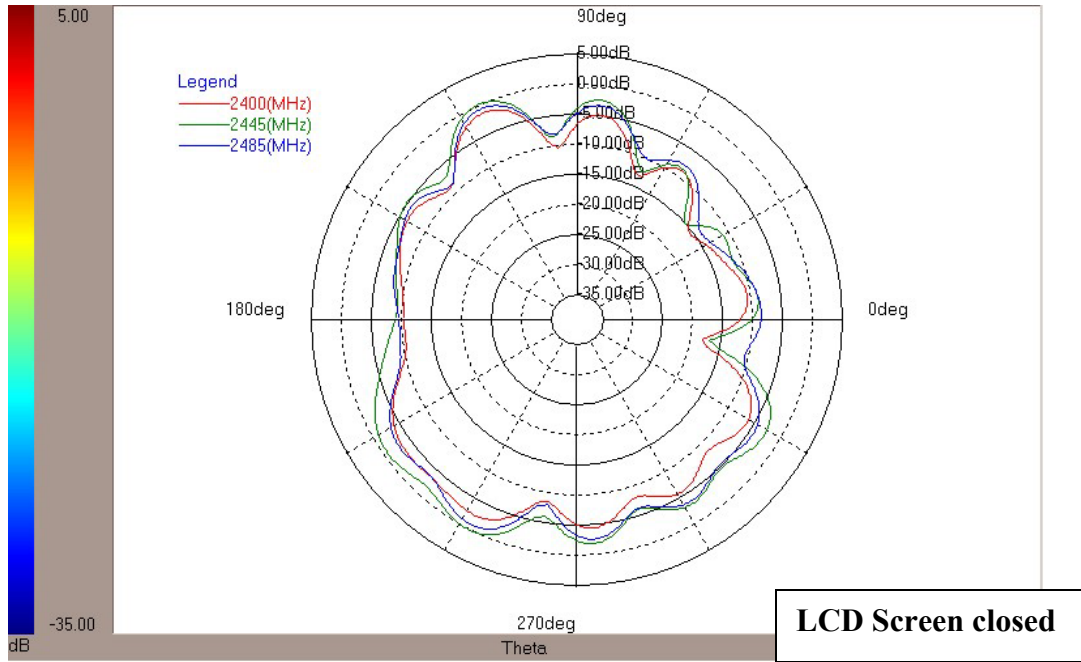
2.5.1. E1 Plane ($\phi=0$ degree)



2.5.2. E2 Plane ($\phi=90$ degree)

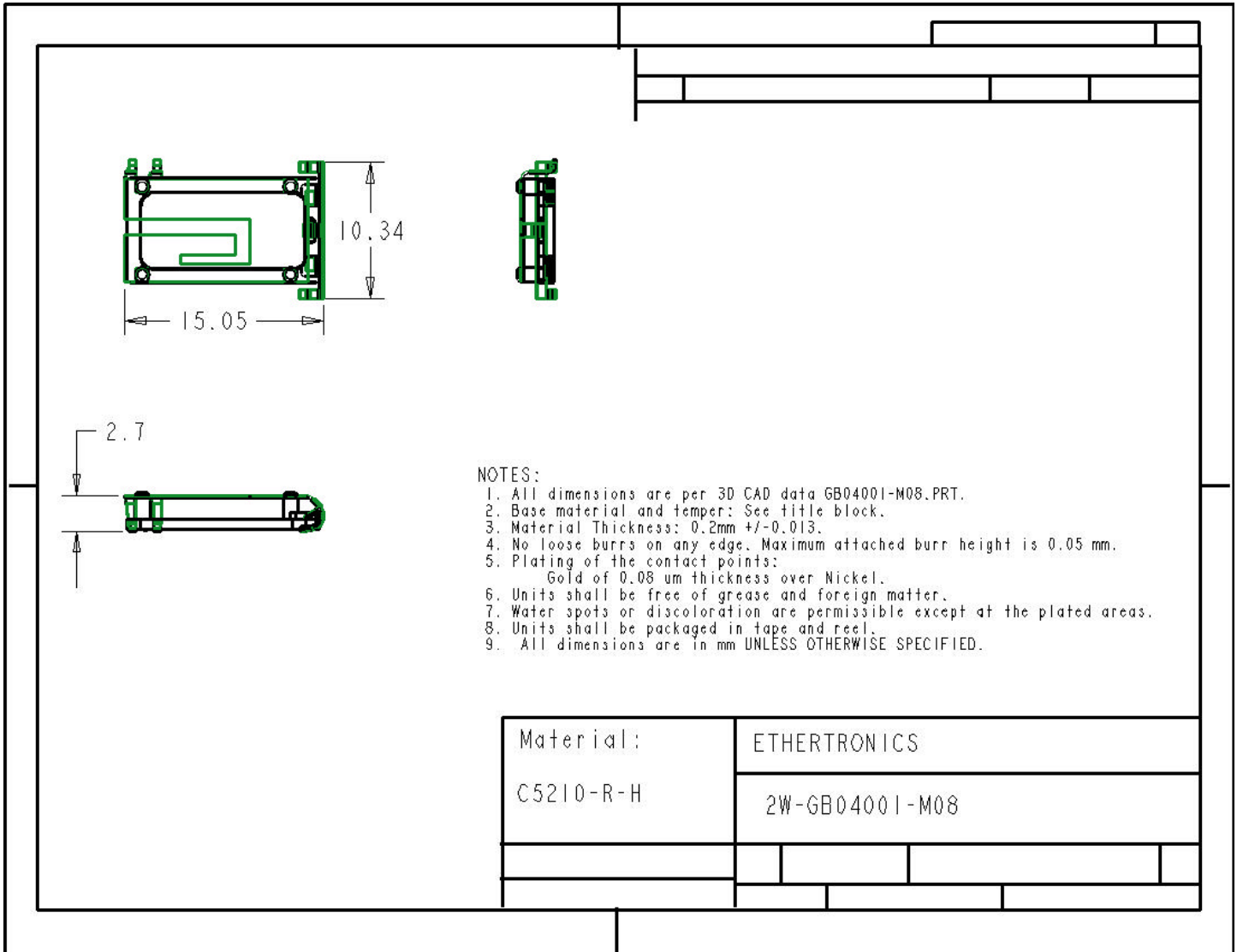


2.5.3. H Plane ($\theta=90$ degree)



3. Mechanical

3.1. Mechanical Assembly Drawing



The GB04001 has a lead rating of 28ppm, which qualifies it as lead-free.

Ethertronics Inc.
9605 Scranton Road, Suite 300
San Diego, CA 92121
(858) 550-3820 Office (858) 550-3821 FAX