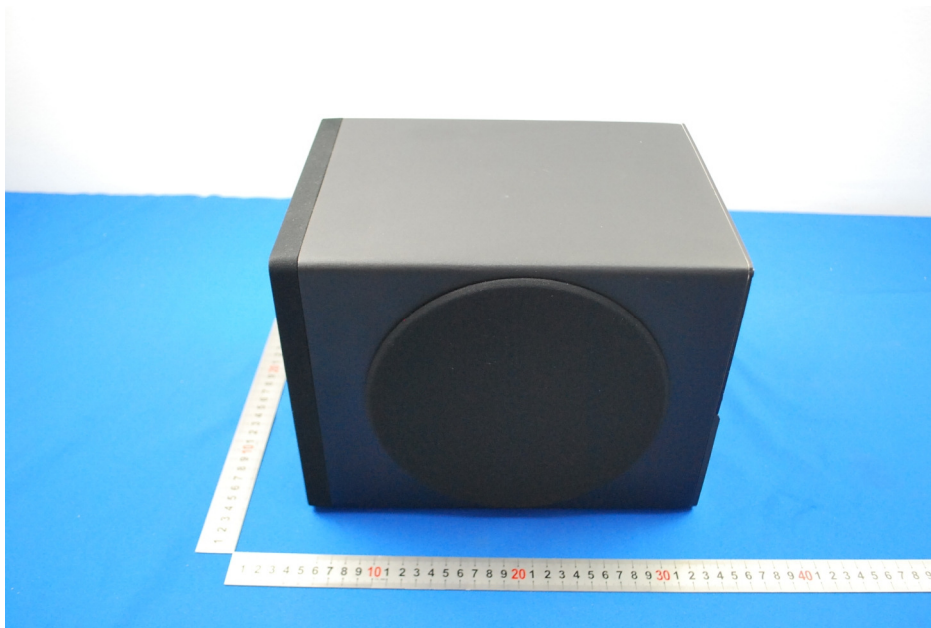
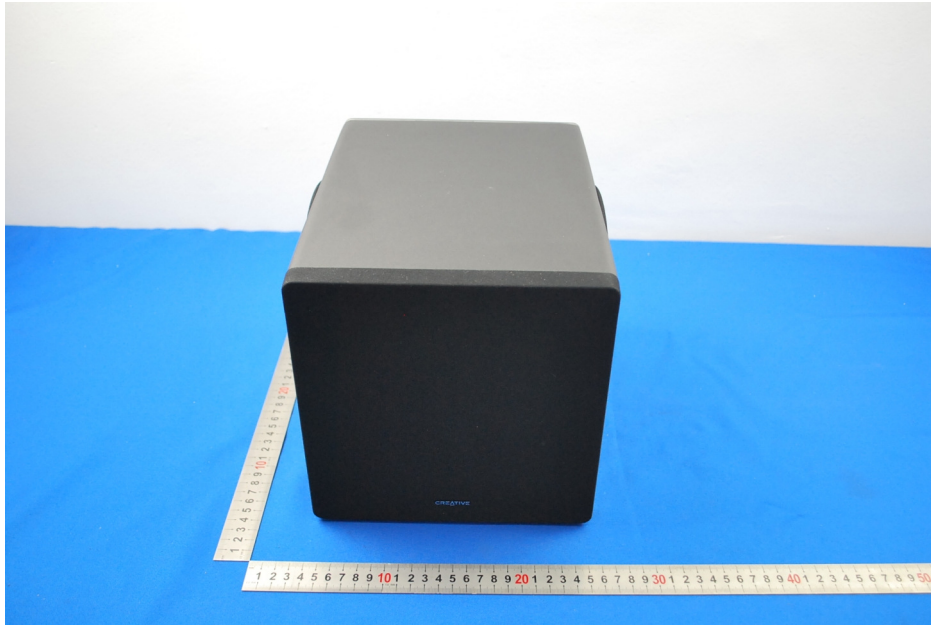
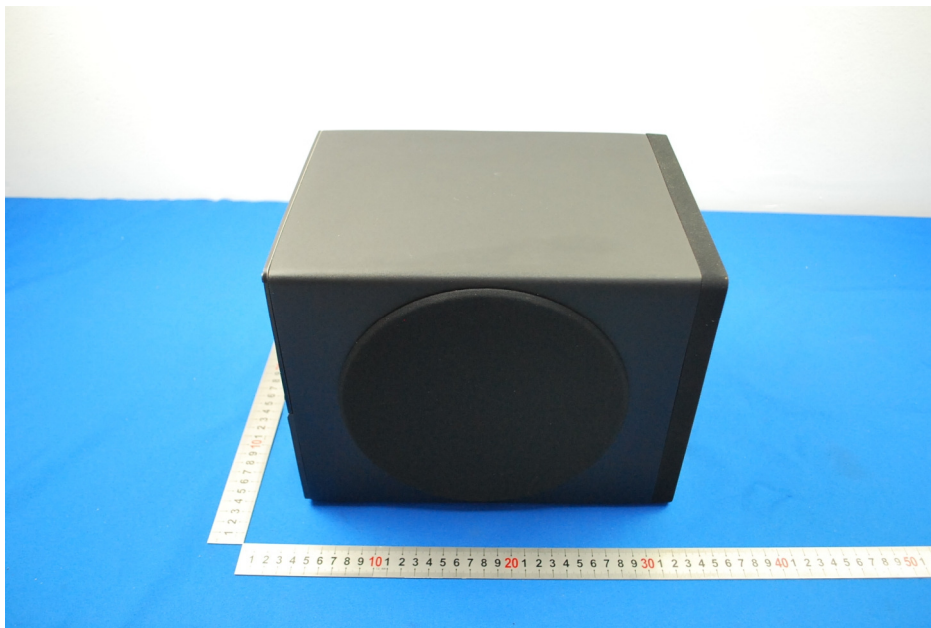


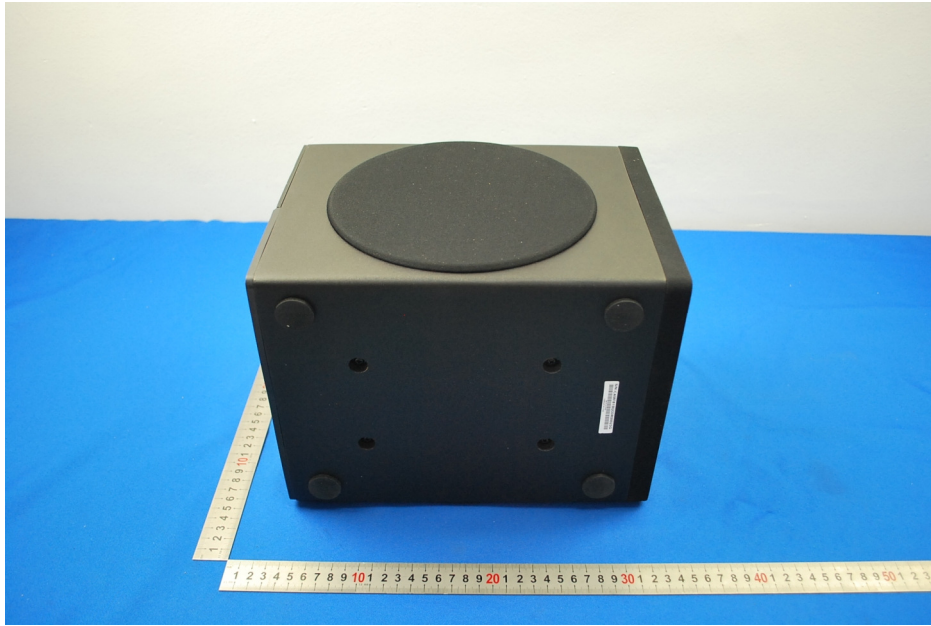
1 Photographs - EUT Constructional Details

Test Model No.: MF8150









CAN ICES-3 (B)/NMB-3 (B)

IC: 2315A-MF8150 FCC ID: IBAMF8150



SAFETY
MARK

1 2 0 7 0 9 - 1 1



This device complies with Part 15 of the FCC Rules. Operation is subject to the following two conditions:
(1) this device may not cause harmful interference, and (2) this device must accept any interference received, including interference that may cause undesired operation.

MODEL NO: MF8150 INPUT VOLTAGE: 100V-240V ~ 50/60Hz INPUT CURRENT: 300mA