

Test Report No. S09EEC01644/01
dated 29 Jul 2009



PSB Singapore

Note: This report is issued subject to TÜV SÜD PSB's "Terms and Conditions Governing Technical Services".
The terms and conditions governing the issue of this report are set out as attached within this report.

**Choose certainty.
Add value.**

FORMAL REPORT ON TESTING IN ACCORDANCE WITH
FCC Parts 15B & C : 2008
OF A
SOUND BLASTER X-FI NOTEBOOK
[Model : SB0950]
[FCC ID : IBAAVPSB0950]

TEST FACILITY TÜV SÜD PSB Pte Ltd,
Electrical & Electronics Centre (EEC), Product Services,
1 Science Park Drive, Singapore 118221

FCC REG. NO. 90937 (3m & 10m OATS)
99142 (10m Semi-Anechoic Chamber)
871638 (3m Semi-Anechoic Chamber)
325572 (10m Semi-Anechoic Chamber)

IND. CANADA REG. NO. 29321-1 (3m and 10m Semi-Anechoic Chambers)

PREPARED FOR Ms Sim Lee Fong
Creative Technology Ltd
31 International Business Park
Creative Resource
Singapore 609921
Tel : +65 6895 4729 Fax : +65 6895 4110

QUOTATION NUMBER Q09EEC02111

JOB NUMBER S09EEC01644

TEST PERIOD 17 Jul 2009 – 18 Jul 2009

PREPARED BY

Quek Keng Huat
Associate Engineer

APPROVED BY

Lim Cher Hwee
Assistance Vice President



Laboratory:
TUV SÜD PSB Pte. Ltd.
Testing Services
No.1 Science Park Drive
Singapore 118221

Phone : +65-6885 1333
Fax : +65-6776 8670
E-mail: testing@tuv-sud-psb.sg
www.tuv-sud-psb.sg
Co. Reg : 199002667R

Regional Head Office:
TUV SÜD Asia Pacific Pte. Ltd.
3 Science Park Drive, #04-01/05
The Franklin, Singapore 118223
TUV®



LA-2007-0380-A
LA-2007-0380-A-1
LA-2007-0381-F
LA-2007-0382-B
LA-2007-0383-G
LA-2007-0384-G
LA-2007-0385-E
LA-2007-0386-C

The results reported herein have been performed in accordance with the laboratory's terms of accreditation under the Singapore Accreditation Council - Singapore Laboratory Accreditation Scheme. Tests/Calibrations marked "Not SAC-SINGLAS Accredited" in this Report are not included in the SAC-SINGLAS Accreditation Schedule for our laboratory.

TABLE OF CONTENTS

TEST SUMMARY

PRODUCT DESCRIPTION

SUPPORTING EQUIPMENT DESCRIPTION

EUT OPERATING CONDITIONS

RADIATED EMISSION TEST

SPECTRUM BANDWIDTH (6dB BANDWIDTH
MEASUREMENT) TEST

MAXIMUM PEAK POWER TEST

RF CONDUCTED SPURIOUS EMISSIONS TEST

BAND EDGE COMPLIANCE (CONDUCTED) TEST

BAND EDGE COMPLIANCE (RADIATED) TEST

PEAK POWER SPECTRAL DENSITY TEST

ANNEX A - EUT PHOTOGRAPHS / DIAGRAMS

ANNEX B - FCC LABEL & POSITION

ANNEX C - USER MANUAL, TECHNICAL DESCRIPTION,
BLOCK & CIRCUIT DIAGRAMS

TEST SUMMARY

The product was tested in accordance with the customer's specifications.

Test Results Summary

Test Standard	Description	Pass / Fail
FCC Part 15: 2008		
15.107(a), 15.207	Conducted Emissions	Not Tested *See Note 6
15.109(a), 15.205, 15.209	Radiated Emissions (Spurious Emissions inclusive Restricted Bands Requirement)	Pass
15.247(a)(2)	Spectrum Bandwidth (6dB Bandwidth Measurement)	Pass
15.247(b)(3)	Maximum Peak Power	Pass
15.247(d)	RF Conducted Spurious Emissions	Pass
15.247(d)	Band Edge Compliance (Conducted)	Pass
15.247(d)	Band Edge Compliance (Radiated)	Pass
15.247(e)	Peak Power Spectral Density	Pass
1.1310	Maximum Permissible Exposure	Refer to page 36 for details

TEST SUMMARY

Notes

- Three channels as listed below, which respectively represent the lower, middle and upper channels of the Equipment Under Test (EUT) were chosen and tested. For each channel, the EUT was configured to operate in the test mode.

Transmit Channel	Frequency (MHz)
Channel 0	2.412
Channel 1	2.438
Channel 2	2.464

- The measurements in section 15.231(c) and 15.231(d) were done based on conducted measurements.
- The EUT is a Class B device when in non-transmitting state and meets the FCC Part15B Class B requirements.
- All test measurement procedures are according to ANSI C63.4: 2003.
- The following changes was implemented to improve the range of this product with the output power remains unchanged. Component changes as specified in the table

Reference Designator	From	To
Antenna 1		
Ant1	Antenna, SMT ISM 2.4GHz 50ohm PB-FREE	Not Populated
C49	Not Populated	Res, 0402 0 Ohm 1/16W +/- 5%
Antenna 2		
C19	Cap 0402 0.5pF 50V +/- 0.25pF NPO PB-FREE	Not Populated
C31	Cap 0402 0.5pF 50V +/- 0.25pF NPO PB-FREE	Not Populated
C30	Cap 0402 0.5pF 50V +/- 0.25pF NPO PB-FREE	Not Populated
L10	Inductor 0402 2.2NH +/-0.3NH 0.5A PB-FREE	Inductor 0402 2.7NH +/-10% 0.5A PB-FREE

- Creative Technology Ltd specifies not to conduct this test.

Modifications

No modifications were made.



PRODUCT DESCRIPTION

Description	: The Equipment Under Test (EUT) is SOUND BLASTER X-FI NOTEBOOK.
Manufacturer	: Creative Technology Ltd
Model Number	: SB0950
Serial Number(s)	: Nil
Microprocessor	: TI DA255
Operating / Transmitting Frequency	: 2.412GHz (low) - 2.464GHz (high)
Clock / Oscillator Frequency	: 12MHz, 12.28MHz and 22MHz
Modulation	: DSSS @ 22Mbps
Antenna Gain	: 2.0 dBi
Port / Connectors	: Refer to manufacturer's user manual / operating manual.
Rated Input Power	: 1.5V and 3.3V
Accessories	: Refer to manufacturer's user manual / operating manual.



SUPPORTING DESCRIPTION DESCRIPTION

Equipment Description (Including Brand Name)	Model, Serial & FCC ID Number	Cable Description (List Length, Type & Purpose)
Dell Laptop XPS1330	M/N: PP25L S/N: CN-0U8042-070166-81H-01H FCC ID: DoC	2.00m unshielded power cable
Dell Power Adapter	M/N: Nil S/N: Nil FCC ID: Verification	2.00m unshielded power cable



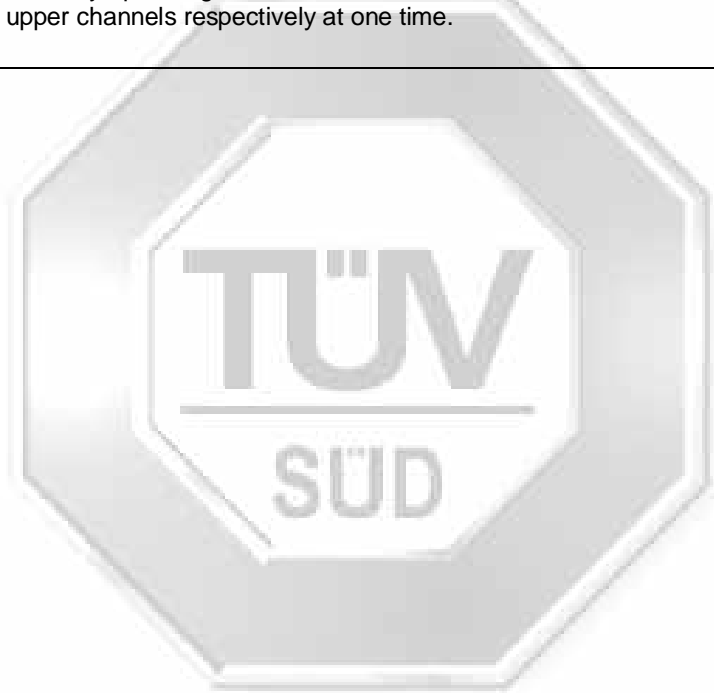


EUT OPERATING CONDITIONS

FCC Part 15

1. Radiated Emissions (Spurious Emissions inclusive Restricted Bands Requirement)
2. Spectrum Bandwidth (6dB Bandwidth Measurement)
3. Maximum Peak Power
4. RF Conducted Spurious Emissions
5. Band Edge Compliance (Conducted)
6. Band Edge Compliance (Radiated)
7. Peak Power Spectral Density
8. Maximum Permissible Exposure

The EUT was exercised by operating in maximum continuous transmission in test mode, i.e transmitting at lower, middle and upper channels respectively at one time.



RADIATED EMISSION TEST

FCC Part 15.205 Restricted Bands

MHz	MHz	MHz	GHz
0.090 - 0.110	16.42 - 16.423	399.9 - 410	4.5 - 5.15
0.495 - 0.505	16.69475 - 16.69525	608 - 614	5.35 - 5.46
2.1735 - 2.1905	16.80425 - 16.80475	960 - 1240	7.25 - 7.75
4.125 - 4.128	25.5 - 25.67	1300 - 1427	8.025 - 8.5
4.17725 - 4.17775	37.5 - 38.25	1435 - 1626.5	9.0 - 9.2
4.20725 - 4.20775	73 - 74.6	1645.5 - 1646.5	9.3 - 9.5
6.215 - 6.218	74.8 - 75.2	1660 - 1710	10.6 - 12.7
6.26775 - 6.26825	108 - 121.94	1718.8 - 1722.2	13.25 - 13.4
6.31175 - 6.31225	123 - 138	2200 - 2300	14.47 - 14.5
8.291 - 8.294	149.9 - 150.05	2310 - 2390	15.35 - 16.2
8.362 - 8.366	156.52475 - 156.52525	2483.5 - 2500	17.7 - 21.4
8.37625 - 8.38675	156.7 - 156.9	2690 - 2900	22.01 - 23.12
8.41425 - 8.41475	162.0125 - 167.17	3260 - 3267	23.6 - 24.0
12.29 - 12.293	167.72 - 173.2	3332 - 3339	31.2 - 31.8
12.51975 - 12.52025	240 - 285	3345.8 - 3358	36.43 - 36.5
12.57675 - 12.57725	322 - 335.4	3600 - 4400	Above 38.6
13.36 - 13.41			

FCC Parts 15.109(a) and 15.209 Radiated Emission Limits

Frequency Range (MHz)	Quasi-Peak Limit Values (dBμV/m) @ 3m
30 - 88	40.0
88 - 216	43.5
216 - 960	46.0
Above 960	54.0*

* Above 1GHz, average detector was used. A peak limit of 20dB above the average limit does apply.

FCC Parts 15.109(a) and 15.209 Radiated Emission Test Instrumentation

Instrument	Model	S/No	Cal Due Date
R&S Test Receiver (20Hz-26.5GHz) – ESMI3	ESMI	829214/005 829550/004	08 Jan 2010
Teseq Preamplifier (PA16)	LNA6018	70214	06 Oct 2009
Schaffner Preamplifier (9kHz-2GHz) – PA19	CPA9231A	18763	16 Feb 2010
Schaffner Bilog Antenna – BL4	CBL6112B	2593	19 May 2010
EMCO Horn Antenna – H14	3115	0003-6087	14 May 2010
Micro Bandstop Filter (2.4-2.5 GHz)	BRM50701	017	13 Aug 2010

RADIATED EMISSION TEST

FCC Parts 15.109(a) and 15.209 Radiated Emission Test Setup

1. The EUT and supporting equipment were set up in accordance with the requirements of the standard on top of a 1.5m X 1.0m X 0.8m high, non-metallic table.
2. The filtered power supply for the EUT and supporting equipment were tapped from the appropriate power sockets located on the turntable.
3. The relevant broadband antenna was set at the required test distance away from the EUT and supporting equipment boundary.

FCC Parts 15.109(a) and 15.209 Radiated Emission Test Method

1. The EUT was switched on and allowed to warm up to its normal operating condition.
2. A prescan was carried out to pick the worst emission frequencies from the EUT. For EUT which is a portable device, the prescan was carried out by rotating the EUT through three orthogonal axes to determine which altitude and equipment arrangement produces such emissions.
3. The test was carried out at the selected frequency points obtained from the prescan in step 2. Maximization of the emissions, was carried out by rotating the EUT, changing the antenna polarization, and adjusting the antenna height in the following manner:
 - a. Vertical or horizontal polarisation (whichever gave the higher emission level over a full rotation of the EUT) was chosen.
 - b. The EUT was then rotated to the direction that gave the maximum emission.
 - c. Finally, the antenna height was adjusted to the height that gave the maximum emission.
4. A Quasi-peak measurement was made for that frequency point if it was less than or equal to 1GHz. For frequency point that above 1GHz, both Peak and Average measurements were carried out.
5. Steps 3 and 4 were repeated for the next frequency point, until all selected frequency points were measured.
6. The frequency range covered was from 30MHz to 10th harmonics of the EUT fundamental frequency, using the Bi-log antenna for frequencies from 30MHz up to 1GHz, and the Horn antenna above 1GHz.

Sample Calculation Example

At 300 MHz	Q-P limit (Class B) = 200 μ V/m = 46.0 dB μ V/m
Log-periodic antenna factor & cable loss at 300 MHz = 18.5 dB	
Q-P reading obtained directly from EMI Receiver = 40.0 dB μ V/m (Calibrated level including antenna factors & cable losses)	
Therefore, Q-P margin = 40.0 - 46.0 = -6.0	i.e. 6 dB below Q-P limit

RADIATED EMISSION TEST



Radiated Emissions Test Setup (Front View)



Radiated Emissions Test Setup (Rear View)

RADIATED EMISSION TEST

FCC Parts 15.109(a), 15.205 and 15.209 Radiated Emission Results

Test Input Power	110V 60Hz	Temperature	24°C
Test Distance	3m	Relative Humidity	57%
		Atmospheric Pressure	1030mbar
		Tested By	Lucas Beh

Spurious Emissions ranging from 30MHz – 1GHz

Frequency (MHz)	Q-P Value (dBμV/m)	Q-P Margin (dB)	Azimuth (Degrees)	Height (cm)	Polarisation (H/V)	Channel
61.5680	33.2	-6.8	200	100	V	2
299.3240	39.0	-7.0	145	100	H	2
366.1380	38.3	-7.7	165	100	H	2
431.2960	35.4	-10.6	331	188	V	2
572.1010	37.4	-8.6	71	100	V	2
799.2900	37.6	-8.4	192	100	H	2

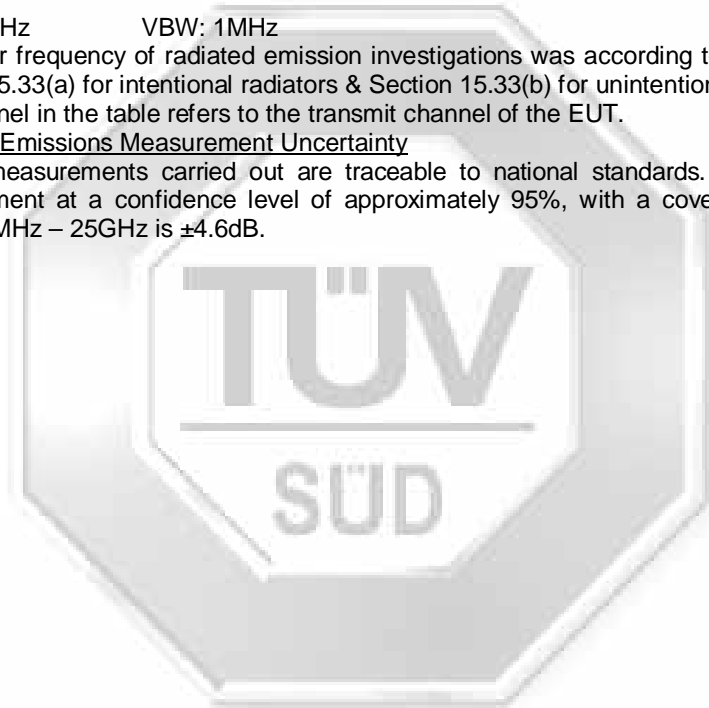
Spurious Emissions above 1GHz

Frequency (GHz)	Peak Value (dBμV/m)	Average Value (dBμV/m)	Average Margin (dB)	Azimuth (Degrees)	Height (cm)	Pol (H/V)	Channel
--	--	--	--	--	--	--	--
--	--	--	--	--	--	--	--
--	--	--	--	--	--	--	--
--	--	--	--	--	--	--	--
--	--	--	--	--	--	--	--
--	--	--	--	--	--	--	--

RADIATED EMISSION TEST

Notes

1. All possible modes of operation were investigated. Only the worst case emissions measured, using the correct CISPR detectors, are reported. All other emissions were relatively insignificant.
2. A "-ve" margin indicates a PASS as it refers to the margin present below the limit line at the particular frequency.
3. "--" indicates no emissions were found and shows compliance to the limits.
4. EMI receiver Resolution Bandwidth (RBW) and Video Bandwidth (VBW) settings:
30MHz - 1GHz
RBW: 120kHz VBW: 1MHz
>1GHz
RBW: 1MHz VBW: 1MHz
5. The upper frequency of radiated emission investigations was according to requirements stated in Section 15.33(a) for intentional radiators & Section 15.33(b) for unintentional radiators.
6. The channel in the table refers to the transmit channel of the EUT.
7. Radiated Emissions Measurement Uncertainty
All test measurements carried out are traceable to national standards. The uncertainty of the measurement at a confidence level of approximately 95%, with a coverage factor of 2, in the range 30MHz – 25GHz is $\pm 4.6\text{dB}$.



SPECTRUM BANDWIDTH (6dB BANDWIDTH MEASUREMENT) TEST

FCC Part 15.247(a)(2) Spectrum Bandwidth (6dB Bandwidth Measurement) Limits

The EUT shows compliance to the requirements of this section, which states that the minimum bandwidth of the EUT employing digital modulation techniques shall be at least 500kHz.

FCC Part 15.247(a)(2) Spectrum Bandwidth (6dB Bandwidth Measurement) Test Instrumentation

Instrument	Model	S/No	Cal Due Date
Agilent EMC Analyzer (9kHz-26.5GHz) (Ref)	E7405A	US40240195	20 Jan 2010

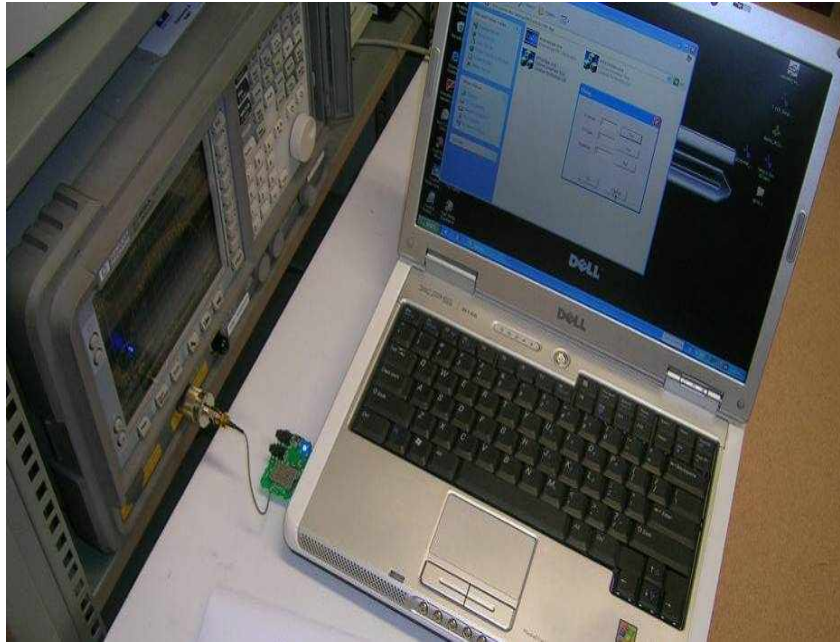
FCC Part 15.247(a)(2) Spectrum Bandwidth (6dB Bandwidth Measurement) Test Setup

1. The EUT and supporting equipment were set up as shown in the setup photo.
2. The power supply for the EUT was connected to a filtered mains.
3. The RF antenna connector was connected to the spectrum analyser via a low-loss coaxial cable.
4. The resolution bandwidth (RBW) and the video bandwidth (VBW) of the spectrum analyser were respectively set to 10kHz and 30kHz.
5. All other supporting equipment were powered separately from another filtered mains.

FCC Part 15.247(a)(2) Spectrum Bandwidth (6dB Bandwidth Measurement) Test Method

1. The EUT was switched on and allowed to warm up to its normal operating condition. The EUT was then configured to operate in the test mode at Channel 0 (.2.412GHz).
2. The center frequency of the spectrum analyser was set to the transmitting frequency with the frequency span wide enough to capture the 6dB bandwidth of the transmitting frequency.
3. The spectrum analyser was set to max hold to capture the transmitting frequency. The signal capturing was continuous until no further changes were observed.
4. The peak of the transmitting frequency was detected with the marker peak function of the spectrum analyser. The frequencies below the 6dB peak frequency at lower (f_L) and upper (f_H) sides of the transmitting frequency were marked and measured by using the marker-delta function of the spectrum analyser.
5. The 6dB bandwidth of the transmitting frequency is the frequency difference between the marked lower and upper frequencies, $|f_H - f_L|$.
6. The steps 2 to 5 were repeated with the transmitting frequency was set to Channel 1 (2.438GHz) and Channel 2 (2.464GHz) respectively.

SPECTRUM BANDWIDTH (6dB BANDWIDTH MEASUREMENT) TEST



Spectrum Bandwidth (6dB Bandwidth Measurement) Test Setup

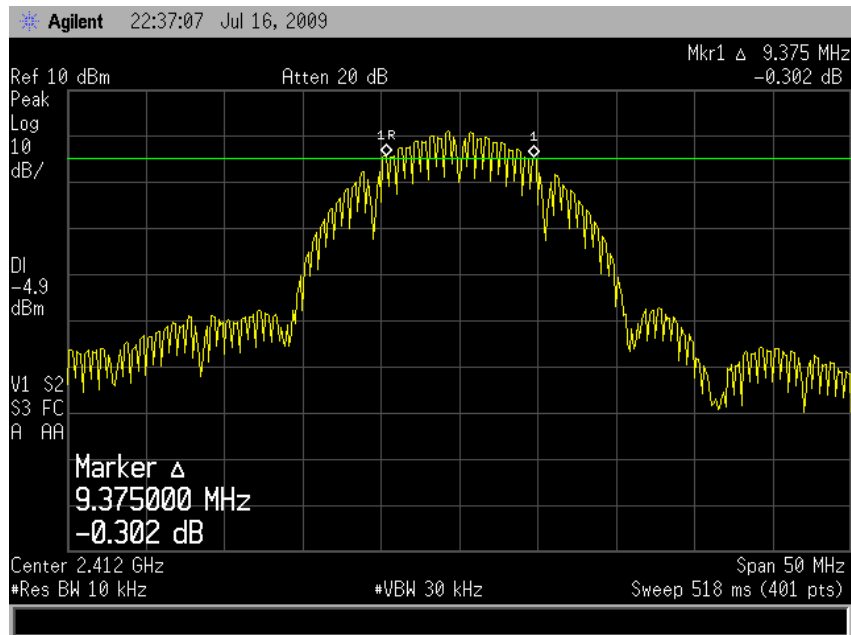
FCC Part 15.247(a)(2) Spectrum Bandwidth (6dB Bandwidth Measurement) Results

Test Input Power	110V 60Hz	Temperature	24°C
Attached Plots	1 - 3	Relative Humidity	55%
		Atmospheric Pressure	1030mbar
		Tested By	Tan Say Eng

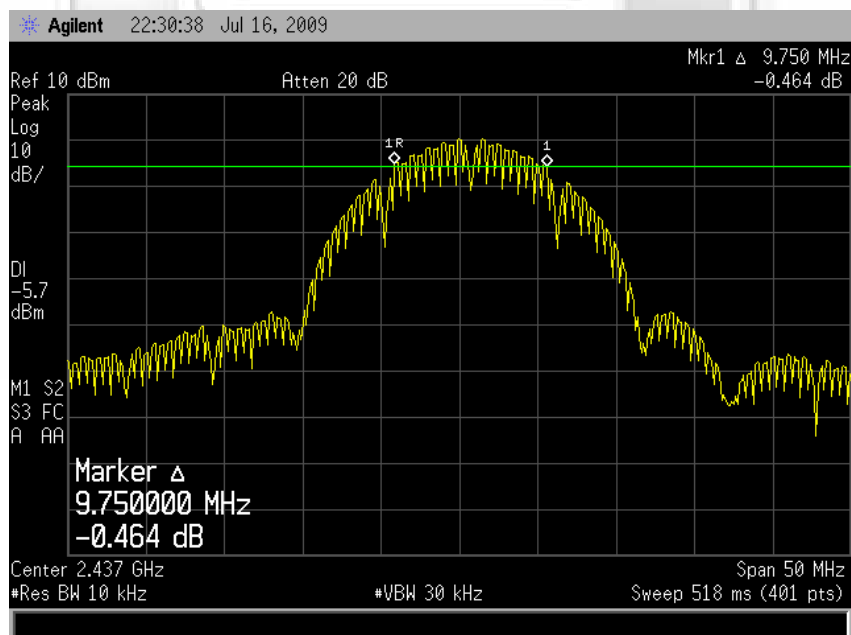
Channel	Channel Frequency (GHz)	6dB Bandwidth (MHz)
0	2.412	9.375
1	2.438	9.750
2	2.464	9.750

SPECTRUM BANDWIDTH (6dB BANDWIDTH MEASUREMENT) TEST

Spectrum Bandwidth (6dB Bandwidth Measurement) Plots



Plot 1 - Channel 0

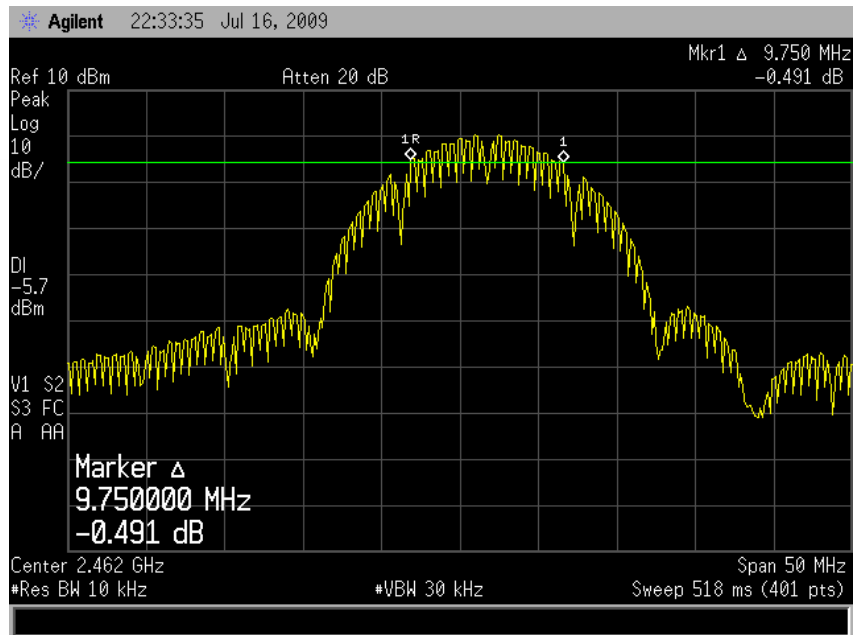


Plot 2 - Channel 1



SPECTRUM BANDWIDTH (6dB BANDWIDTH MEASUREMENT) TEST

Spectrum Bandwidth (6dB Bandwidth Measurement) Plots



MAXIMUM PEAK POWER TEST

FCC Part 15.247(b)(3) Maximum Peak Power Limits

The EUT shows compliance to the requirements of this section, which states the maximum peak power of the EUT employing digital modulation shall not exceed 1W (30dBm).

FCC Part 15.247(b)(3) Maximum Peak Power Test Instrumentation

Instrument	Model	S/No	Cal Due Date
R&S Universal Radio Communication Tester	CMU 200	837587/068	21 Jul 2010

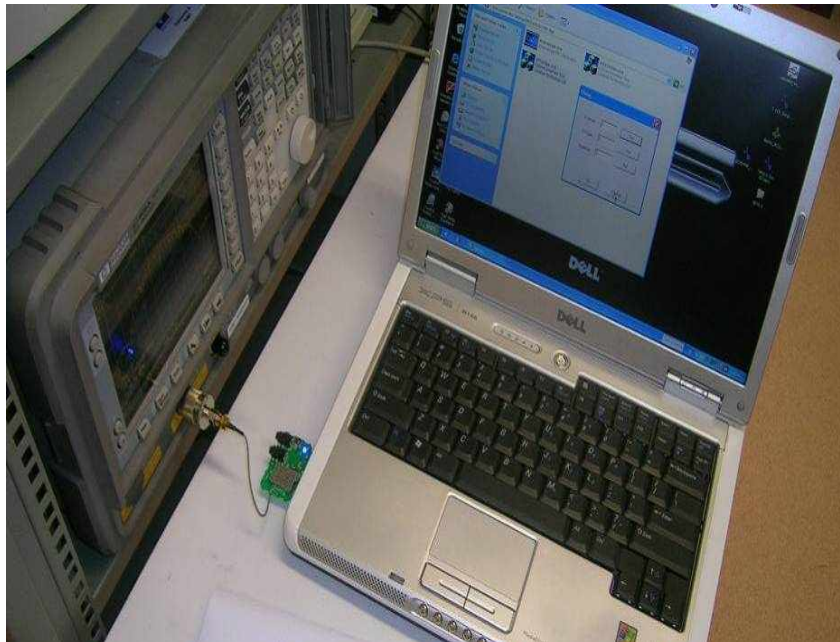
FCC Part 15.247(b)(3) Maximum Peak Power Test Setup

1. The EUT and supporting equipment were set up as shown in the setup photo.
2. The power supply for the EUT was connected to a filtered mains.
3. The RF antenna connector was connected to the Universal Radio Communication Tester, which set into power analyser mode via a low-loss coaxial cable.
4. All other supporting equipment were powered separately from another filtered mains.

FCC Part 15.247(b)(3) Maximum Peak Power Test Method

1. The EUT was switched on and allowed to warm up to its normal operating condition. The EUT was then configured to operate in the test mode at Channel 0 (.2.412GHz).
2. The maximum peak power of the transmitting frequency was detected and recorded.
3. The Equivalent Isotropic Radiated Power (EIRP) of the EUT was computed by adding its antenna gain to the measured maximum peak power.
4. The steps 2 to 3 were repeated with the transmitting frequency was set to Channel 1 (2.438GHz) and Channel 2 (2.464GHz) respectively.

MAXIMUM PEAK POWER TEST



Maximum Peak Power Test Setup

FCC Part 15.247(b)(3) Maximum Peak Power Results

Test Input Power	110V 60Hz	Temperature	24°C
Antenna Gain	2.0 dBi	Relative Humidity	55%
		Atmospheric Pressure	1030mbar
		Tested By	Tan Say Eng

Channel	Channel Frequency (GHz)	Maximum Peak Power (W)	Maximum EIRP (W)	Limit (W)
0	2.412	0.0562	0.0891	1.0
1	2.438	0.0468	0.0741	1.0
2	2.464	0.0389	0.0616	1.0

Notes

1. Power analyser of Universal Radio Communication Tester was used for power measurement with peak detection as mode of measurement. The power analyser mode supports a wideband power measurement ranging from 100kHz to 2700MHz.

RF CONDUCTED SPURIOUS EMISSIONS TEST

FCC Part 15.247(d) RF Conducted Spurious Emissions Limits

The EUT shows compliance to the requirements of this section, which states in any 100kHz bandwidth outside the frequency band in which the spread spectrum intentional radiator (EUT) is operating, the radio frequency power that is produced by the EUT shall be at least 20dB below that in the 100kHz bandwidth within the band that contains the highest level of desired power.

FCC Part 15.247(d) RF Conducted Spurious Test Instrumentation

Instrument	Model	S/No	Cal Due Date
Agilent EMC Analyzer (9kHz-26.5GHz) (Ref)	E7405A	US40240195	20 Jan 2010

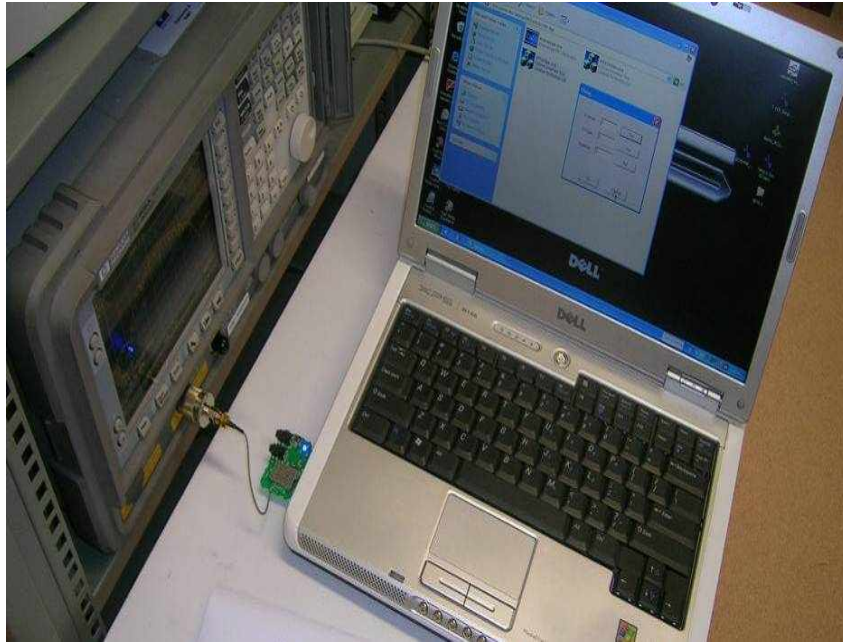
FCC Part 15.247(d) RF Conducted Spurious Emissions Test Setup

1. The EUT and supporting equipment were set up as shown in the setup photo.
2. The power supply for the EUT was connected to a filtered mains.
3. The RF antenna connector was connected to the spectrum analyser via a low-loss coaxial cable.
4. The resolution bandwidth (RBW) and the video bandwidth (VBW) of the spectrum analyser were respectively set to 100kHz and 300kHz.
5. All other supporting equipment were powered separately from another filtered mains.

FCC Part 15.247(d) RF Conducted Spurious Emissions Test Method

1. The EUT was switched on and allowed to warm up to its normal operating condition. The EUT was then configured to operate in the test mode, non-hopping with transmitting frequency at Channel 0 (2.412GHz).
2. The start and stop frequencies of the spectrum analyser were set to 30MHz and 10GHz.
3. The spectrum analyser was set to max hold to capture any spurious emissions within the span. The signal capturing was continuous until no further spurious emissions were detected.
4. The steps 2 to 3 were repeated with frequency span was set from 10GHz to 25GHz.
5. The steps 2 to 4 were repeated with the transmitting frequency was set to Channel 1 (2.438GHz) and Channel 2 (2.464GHz) respectively.

RF CONDUCTED SPURIOUS EMISSIONS TEST



RF Conducted Spurious Emissions Test Setup

FCC Part 15.247(d) RF Conducted Spurious Emissions Results

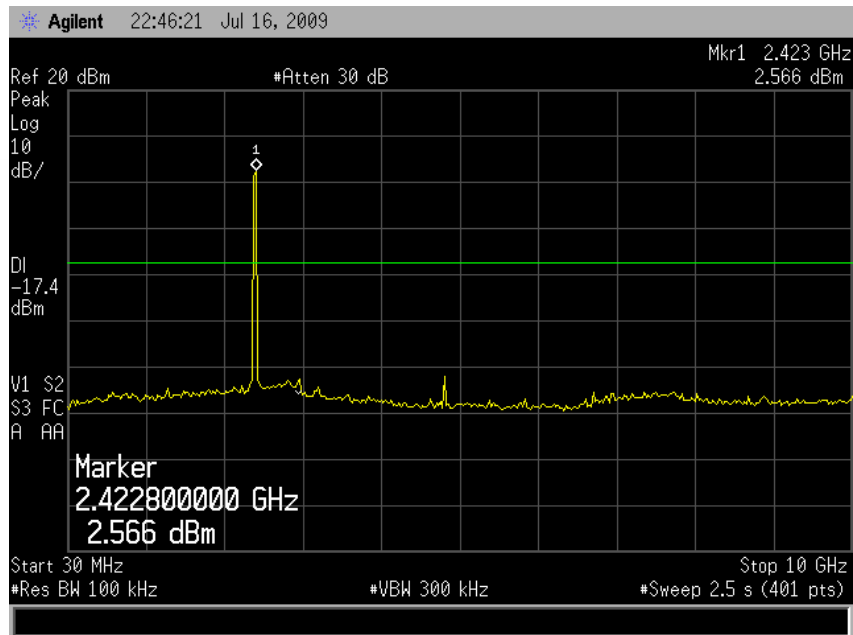
Test Input Power	110V 60Hz	Temperature	24°C
Attached Plots	4 - 9	Relative Humidity	55%
		Atmospheric Pressure	1030mbar
		Tested By	Tan Say Eng

All spurious signals found were below the specified limit. Please refer to the attached plots.

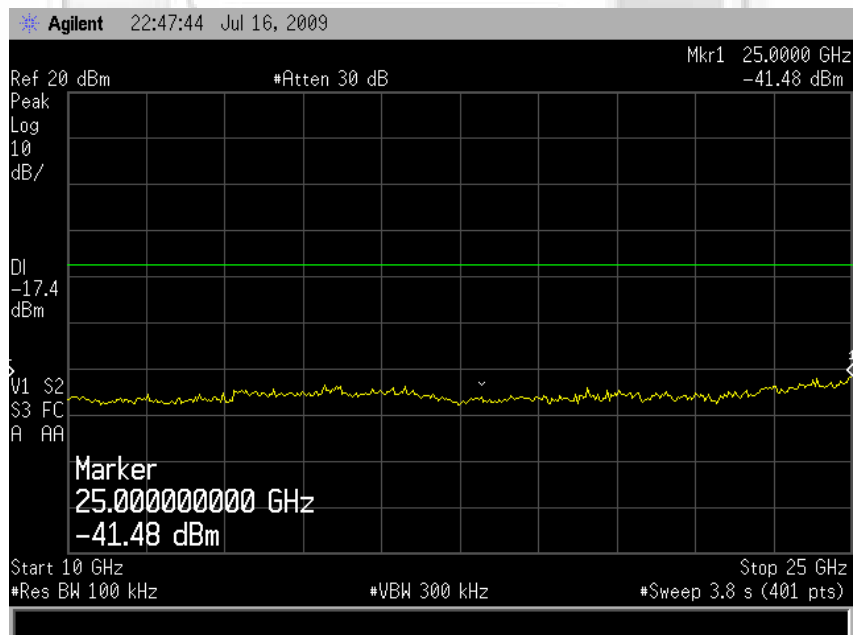


RF CONDUCTED SPURIOUS EMISSIONS TEST

RF Conducted Spurious Emissions Plots



Plot 4 - Channel 0

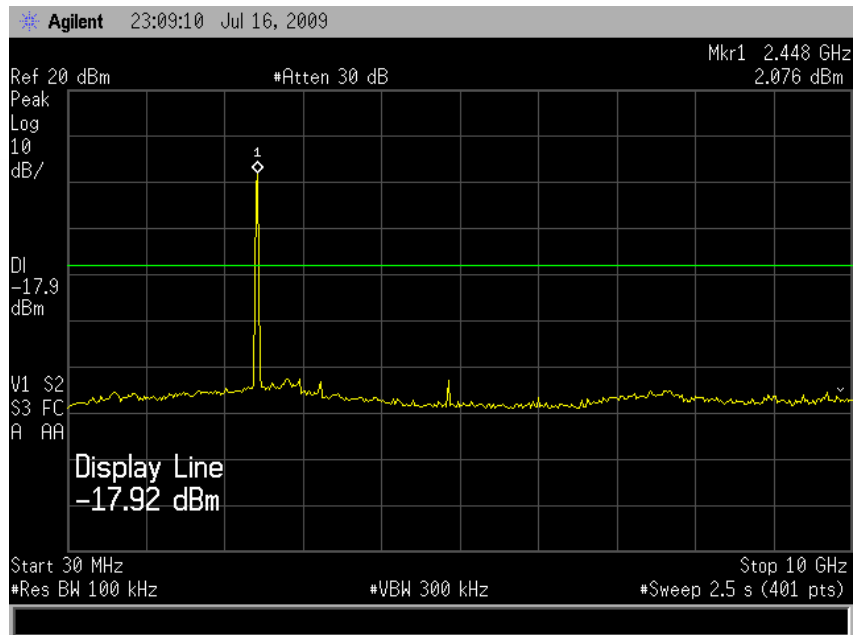


Plot 5 - Channel 0

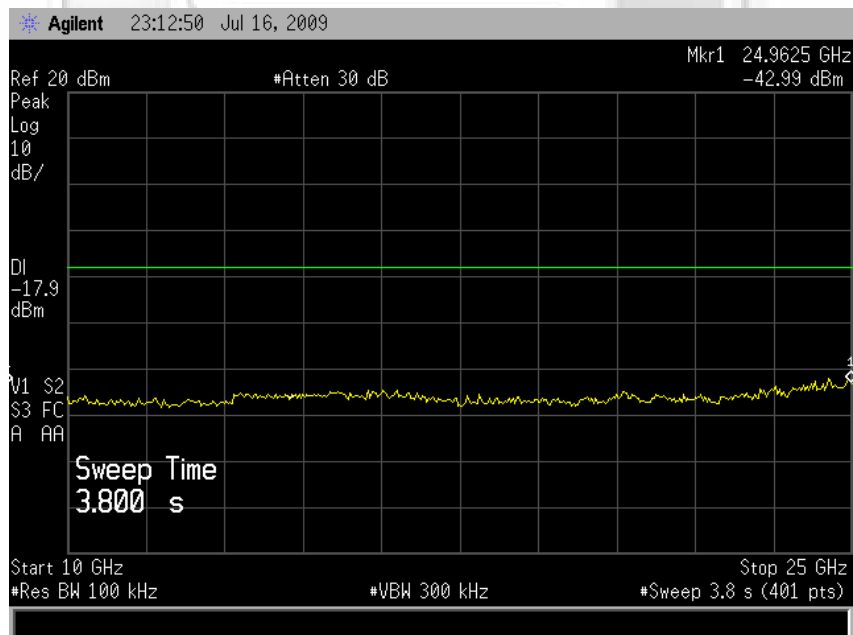


RF CONDUCTED SPURIOUS EMISSIONS TEST

RF Conducted Spurious Emissions Plots



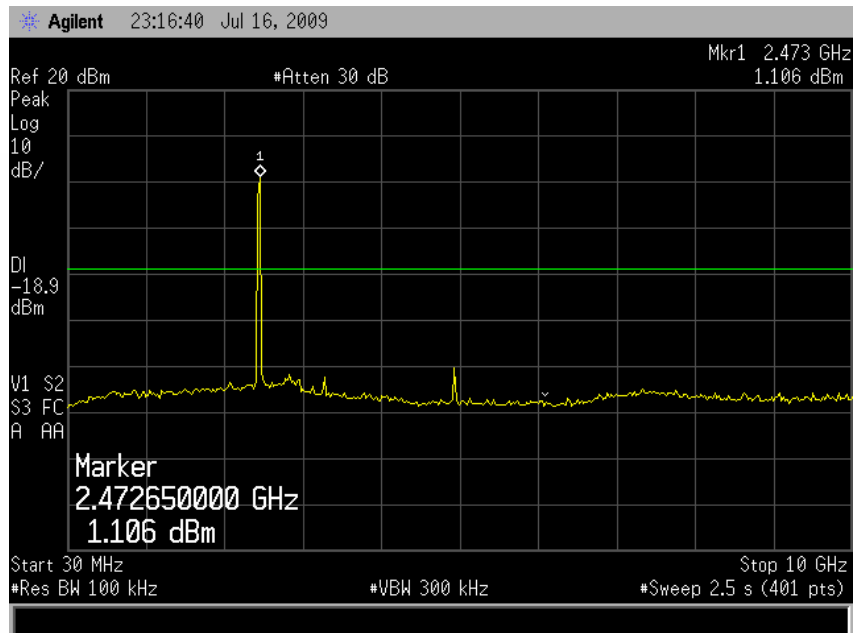
Plot 6 – Channel 1



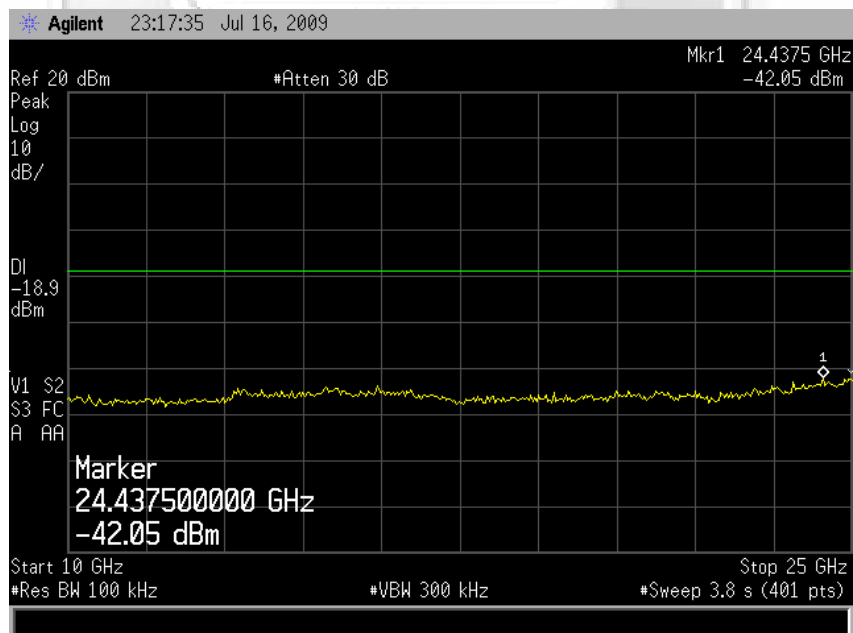
Plot 7 – Channel 1

RF CONDUCTED SPURIOUS EMISSIONS TEST

RF Conducted Spurious Emissions Plots



Plot 8 – Channel 2



Plot 9 – Channel 2

BAND EDGE COMPLIANCE (CONDUCTED) TEST

FCC Part 15.247(d) Band Edge Compliance (Conducted) Limits

The EUT shows compliance to the requirements of this section, which states in any 100kHz bandwidth outside the frequency band in which the spread spectrum intentional radiator (EUT) is operating, the radio frequency power that is produced by the EUT shall be at least 20dB below that in the 100kHz bandwidth within the band that contains the highest level of desired power.

FCC Part 15.247(d) Band Edge Compliance (Conducted) Test Instrumentation

Instrument	Model	S/No	Cal Due Date
Agilent EMC Analyzer (9kHz-26.5GHz) (Ref)	E7405A	US40240195	20 Jan 2010

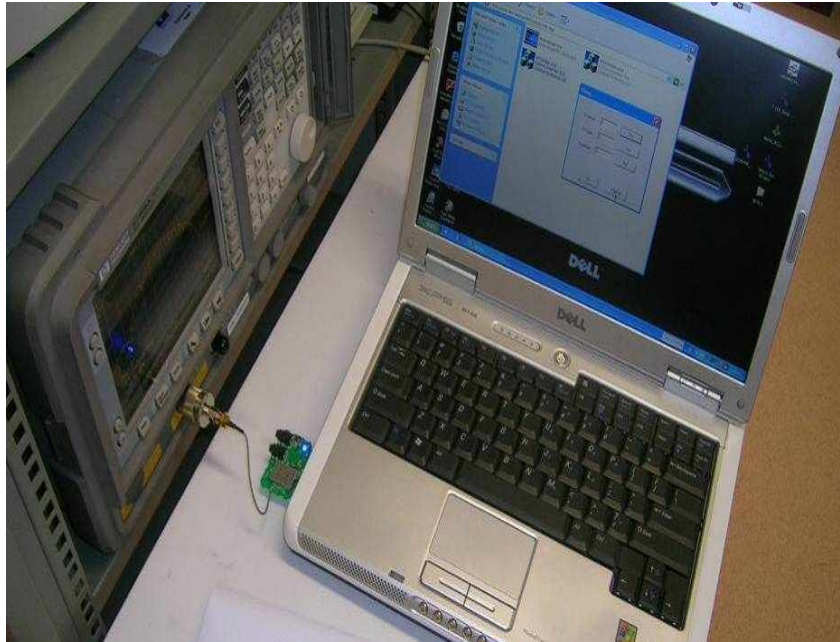
FCC Part 15.247(d) Band Edge Compliance (Conducted) Test Setup

1. The EUT and supporting equipment were set up as shown in the setup photo.
2. The power supply for the EUT was connected to a filtered mains.
3. The RF antenna connector was connected to the spectrum analyser via a low-loss coaxial cable.
4. The resolution bandwidth (RBW) and the video bandwidth (VBW) of the spectrum analyser were respectively set to 100kHz and 300kHz.
5. All other supporting equipment were powered separately from another filtered mains.

FCC Part 15.247(d) Band Edge Compliance (Conducted) Test Method

1. The EUT was switched on and allowed to warm up to its normal operating condition. The EUT was then configured to operate in the test mode.
2. The frequency span of the spectrum analyser was set to wide enough to capture the lower band edge of the transmission band, 2.400GHz and any spurious emissions at the band edge.
3. The spectrum analyser was set to max hold to capture any spurious emissions within the span. The signal capturing was continuous until no further spurious emissions were detected.
4. The steps 2 to 3 were repeated with the frequency span of the spectrum analyser was set to wide enough to capture the upper band edge frequency of the transmission band, 2.4835GHz and the any spurious emissions at the band-edge.

BAND EDGE COMPLIANCE (CONDUCTED) TEST



Band Edge Compliance (Conducted) Test Setup

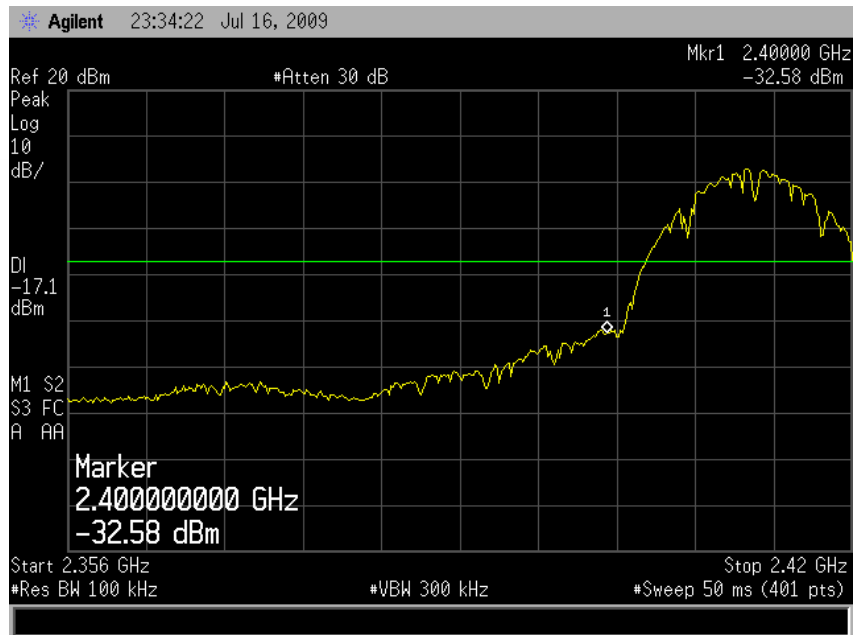
FCC Part 15.247(d) Band Edge Compliance (Conducted) Results

Test Input Power	110V 60Hz	Temperature	24°C
Attached Plots	10 - 11	Relative Humidity	55%
		Atmospheric Pressure	1030mbar
		Tested By	Tan Say Eng

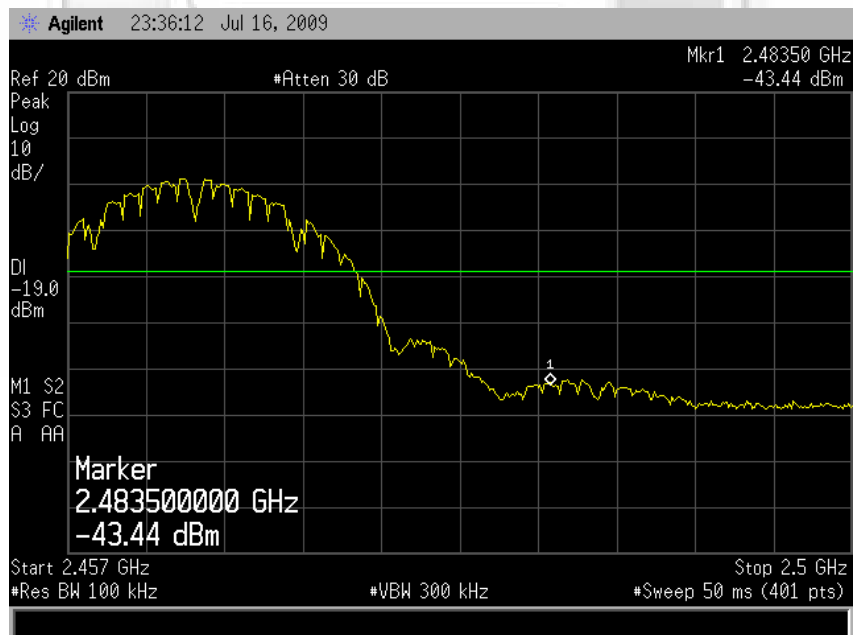
No significant signal was found and they were below the specified limit.

BAND EDGE COMPLIANCE (CONDUCTED) TEST

Band Edge Compliance (Conducted) Plots



Plot 10 – Lower Band Edge at 2.4000GHz



Plot 11 – Upper Band Edge at 2.4835GHz

BAND EDGE COMPLIANCE (RADIATED) TEST

FCC Part 15.247(d) Band Edge Compliance (Radiated) Limits

The EUT shows compliance to the requirements of this section, which states in any 100kHz bandwidth outside the frequency band in which the spread spectrum intentional radiator (EUT) is operating, the radio frequency power that is produced by the EUT shall be at least 20dB below that in the 100kHz bandwidth within the band that contains the highest level of desired power. In addition, radiated emissions which fall in the restricted bands shall comply to the radiated emission limits specified in 15.209.

FCC Part 15.247(d) Band Edge Compliance (Radiated) Test Instrumentation

Instrument	Model	S/No	Cal Due Date
R&S Test Receiver (20Hz-26.5GHz) – ESMI3	ESMI	829214/005 829550/004	08 Jan 2010
Teseq Preamplifier (PA16)	LNA6018	70214	06 Oct 2009
EMCO Horn Antenna – H14	3115	0003-6087	14 May 2010

FCC Part 15.247(d) Band Edge Compliance (Radiated) Test Setup

1. The EUT and supporting equipment were set up as shown in the setup photo.
2. The power supply for the EUT was connected to a filtered mains.
3. The resolution bandwidth (RBW) and the video bandwidth (VBW) of the spectrum analyser were respectively set to 100kHz and 300kHz to show compliance of spurious at band edges are at least 20dB below the carriers. For restricted band spurious at band edges, peak and average measurement plots were taken using the following setting:
 - a. Peak Plot:
RBW = VBW = 1MHz
 - b. Average Plot
RBW = 1MHz, VBW = 10Hz
4. All other supporting equipment were powered separately from another filtered mains.

FCC Part 15.247(d) Band Edge Compliance (Radiated) Test Method

1. The EUT was switched on and allowed to warm up to its normal operating condition. The EUT was then configured to operate in the test mode.
2. The frequency span of the spectrum analyser was set to wide enough to capture the lower band edge of the transmission band, 2.400GHz and any spurious emissions at the band edge.
3. The spectrum analyser was set to max hold to capture any spurious emissions within the span. The signal capturing was continuous until no further spurious emissions were detected.
4. The steps 2 to 3 were repeated with the frequency span of the spectrum analyser was set to wide enough to capture the upper band edge frequency of the transmission band, 2.4835GHz and the any spurious emissions at the band-edge.

BAND EDGE COMPLIANCE (RADIATED) TEST



Band Edge Compliance (Radiated) Test Setup

FCC Part 15.247(d) Band Edge Compliance (Radiated) Results

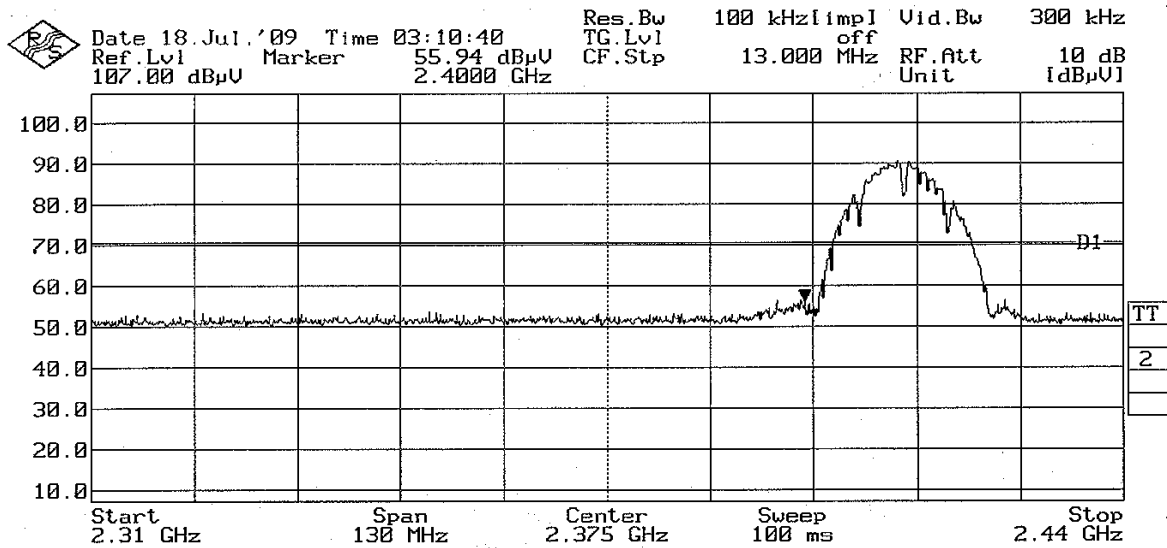
Test Input Power	110V 60Hz	Temperature	24°C
Attached Plots	12 - 17	Relative Humidity	57%
		Atmospheric Pressure	1030mbar
		Tested By	Lucas Beh

No significant signal was found and they were below the specified limit.

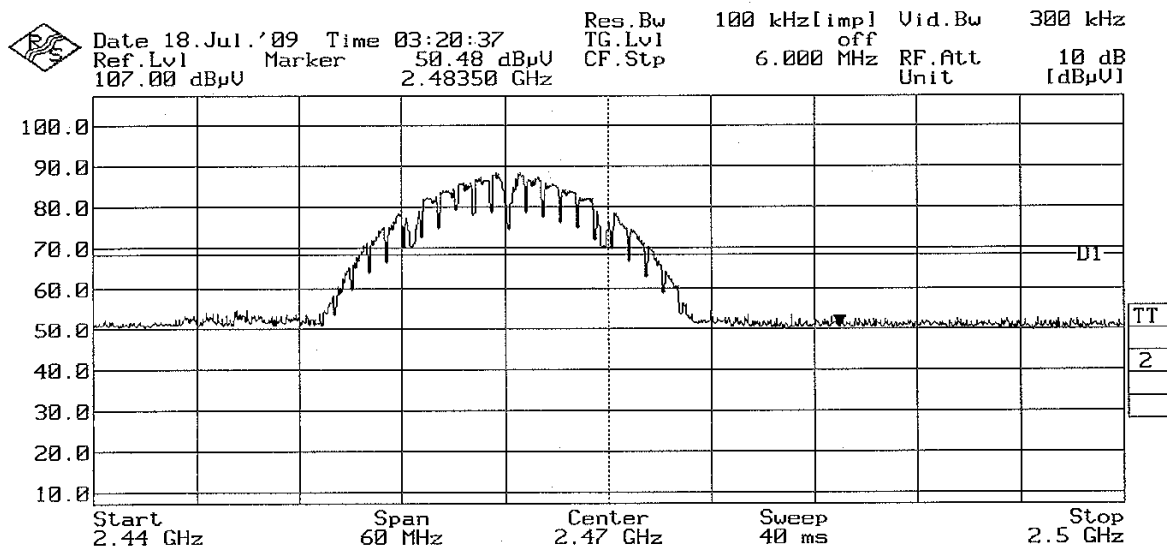


BAND EDGE COMPLIANCE (RADIATED) TEST

Band Edge Compliance (Radiated) Plots (20dB Delta from Carrier at Band Edge)



Plot 12 – Lower Band Edge at 2.4000GHz

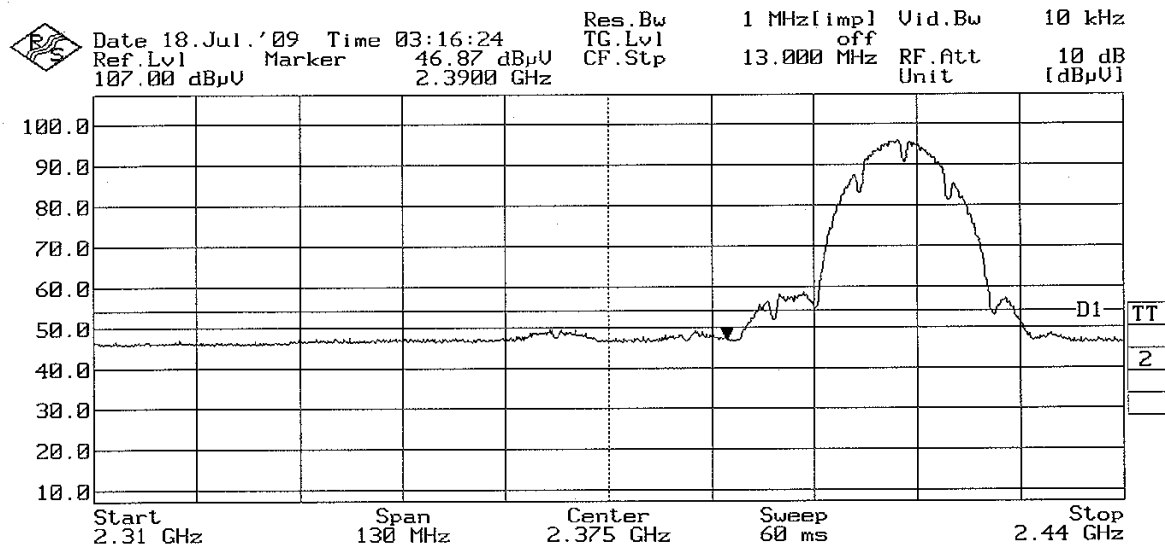
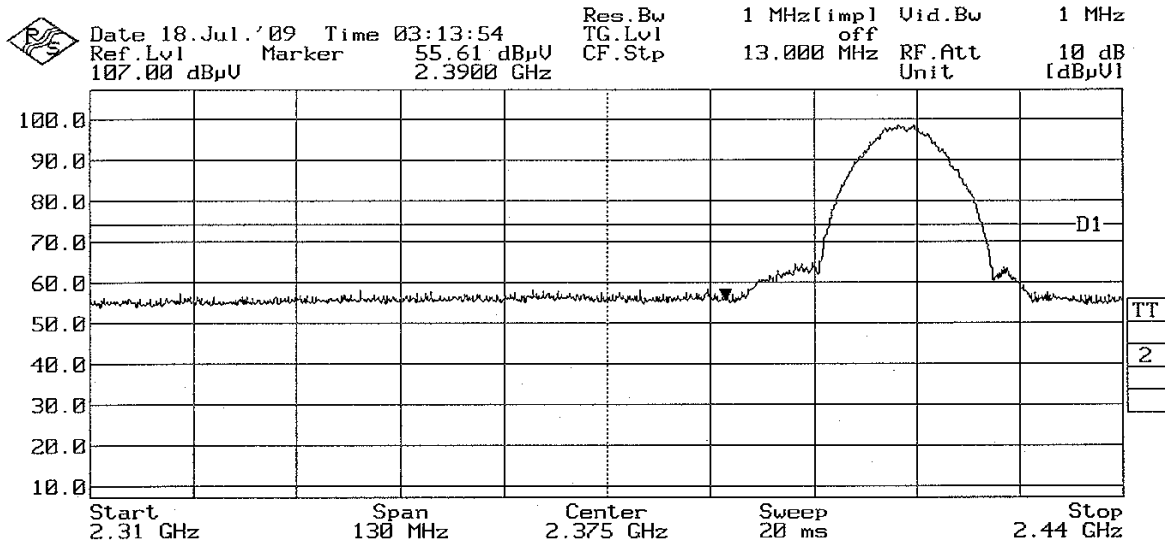


Plot 13 – Upper Band Edge at 2.4835GHz



BAND EDGE COMPLIANCE (RADIATED) TEST

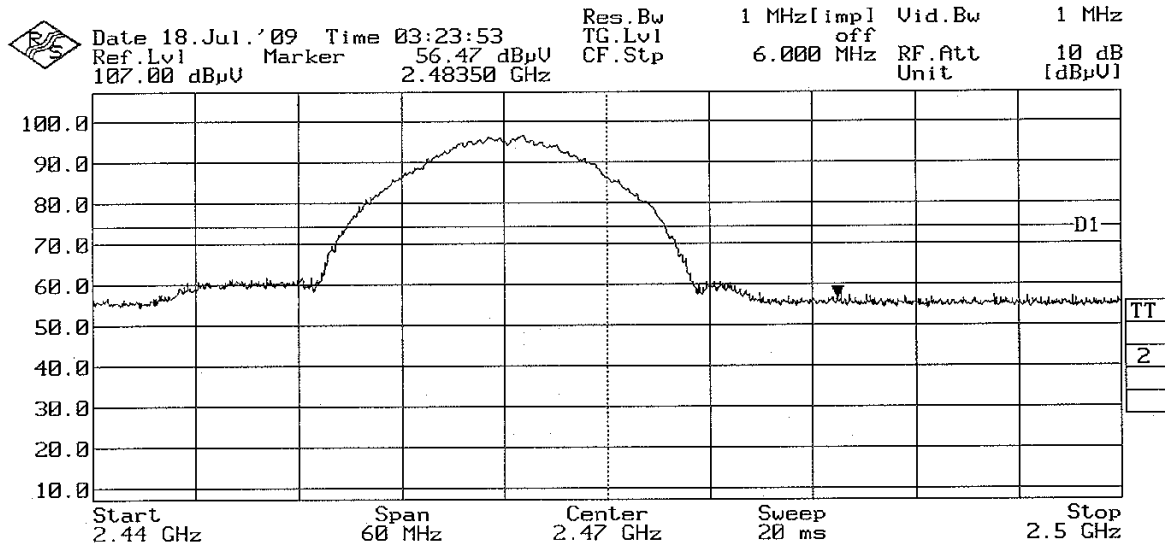
Band Edge Compliance (Radiated) Plots (Restricted Band)



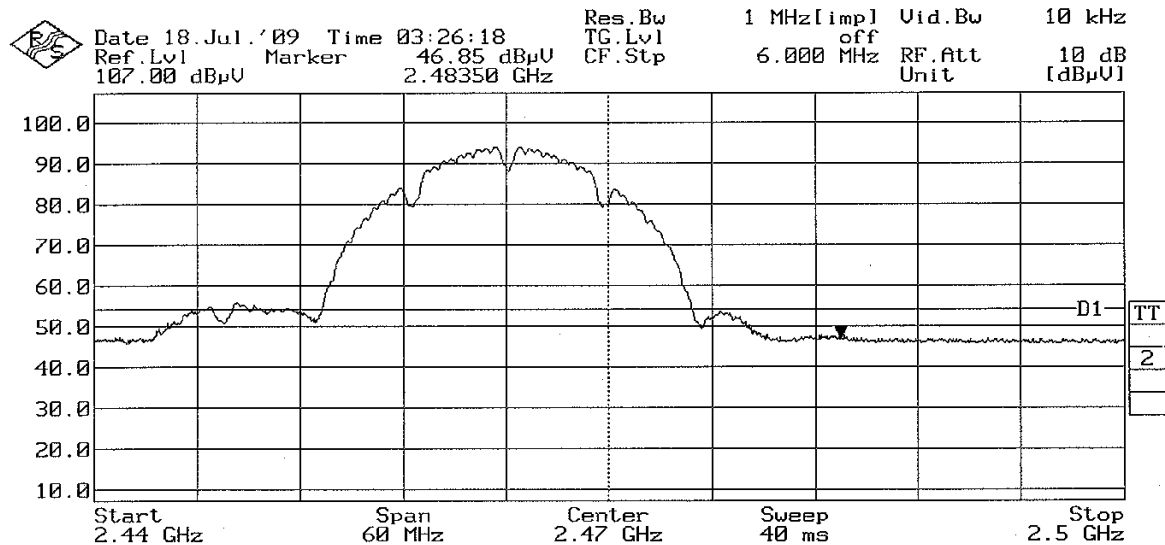


BAND EDGE COMPLIANCE (RADIATED) TEST

Band Edge Compliance (Radiated) Plots (Restricted Band)



Plot 16 – Peak Plot at Upper Band Edge at 2.4835GHz



Plot 17 – Average Plot at Upper Band Edge at 2.4835GHz

PEAK POWER SPECTRAL DENSITY TEST

FCC Part 15.247(e) Peak Power Spectral Density Limits

The EUT shows compliance to the requirements of this section, which states the peak power spectral density conducted from the intentional radiator (EUT) to the antenna shall not be greater than 8dBm (6.3mW) in any 3kHz band during any time interval of continuous transmission.

FCC Part 15.247(e) Peak Power Spectral Density Test Instrumentation

Instrument	Model	S/No	Cal Due Date
Agilent EMC Analyzer (9kHz-26.5GHz) (Ref)	E7405A	US40240195	20 Jan 2010

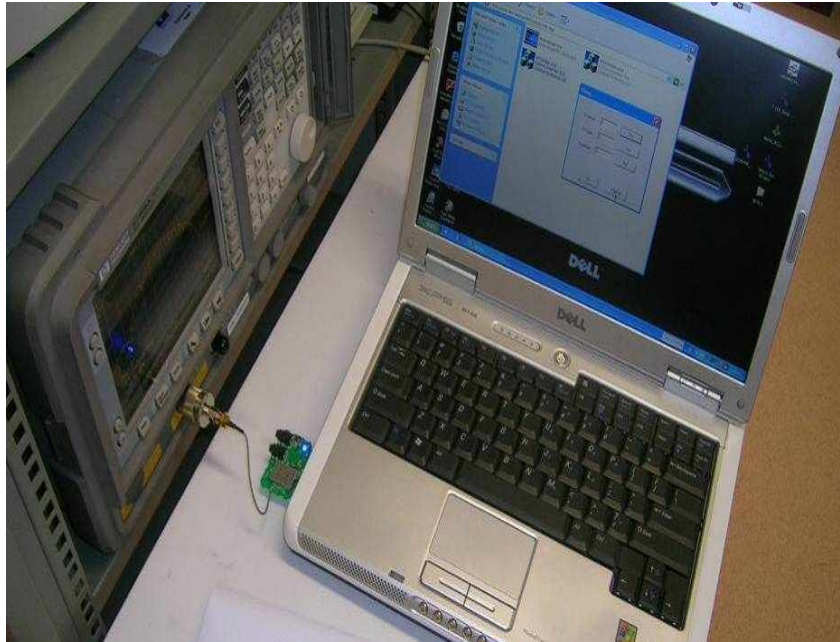
FCC Part 15.247(e) Peak Power Spectral Density Test Setup

1. The EUT and supporting equipment were set up as shown in the setup photo.
2. The power supply for the EUT was connected to a filtered mains.
3. The RF antenna connector was connected to the spectrum via a low-loss coaxial cable.
4. The resolution bandwidth (RBW) and the video bandwidth (VBW) of the spectrum analyser were respectively set to 3kHz and 10kHz.
5. All other supporting equipment were powered separately from another filtered mains.

FCC Part 15.247(e) Peak Power Spectral Density Test Method

1. The EUT was switched on and allowed to warm up to its normal operating condition. The EUT was then configured to operate in the test mode at Channel 0 (2.412GHz).
2. The sweep time of the spectrum analyser was set to the value of the ratio of the frequency span divided by the RBW.
3. The peak power density of the transmitting frequency was detected and recorded.
4. The step 3 was repeated with the transmitting frequency was set to Channel 1 (2.438GHz) and Channel 2 (2.464GHz) respectively.

PEAK POWER SPECTRAL DENSITY TEST



Peak Power Spectral Density Test Setup

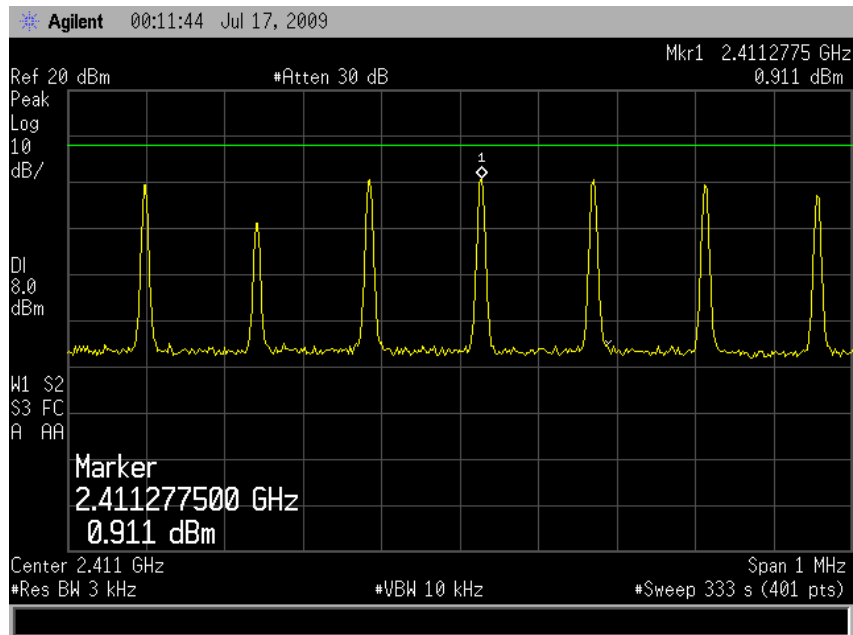
FCC Part 15.247(e) Peak Power Spectral Density Results

Test Input Power	110V 60Hz	Temperature	24°C
Attached Plots	18 - 20	Relative Humidity	55%
		Atmospheric Pressure	1030mbar
		Tested By	Tan Say Eng

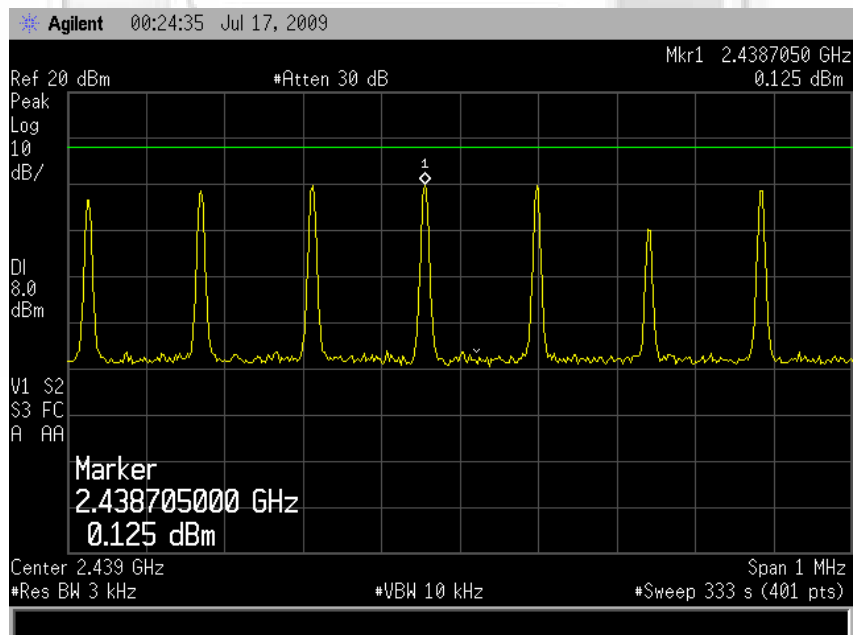
Channel	Channel Frequency (GHz)	Peak Power Spectral Density (mW)	Limit (mW)
0	2.412	1.2330	6.3
1	2.438	1.0292	6.3
2	2.464	0.8834	6.3

PEAK POWER SPECTRAL DENSITY TEST

Peak Power Spectral Density Plots



Plot 18 – Channel 0

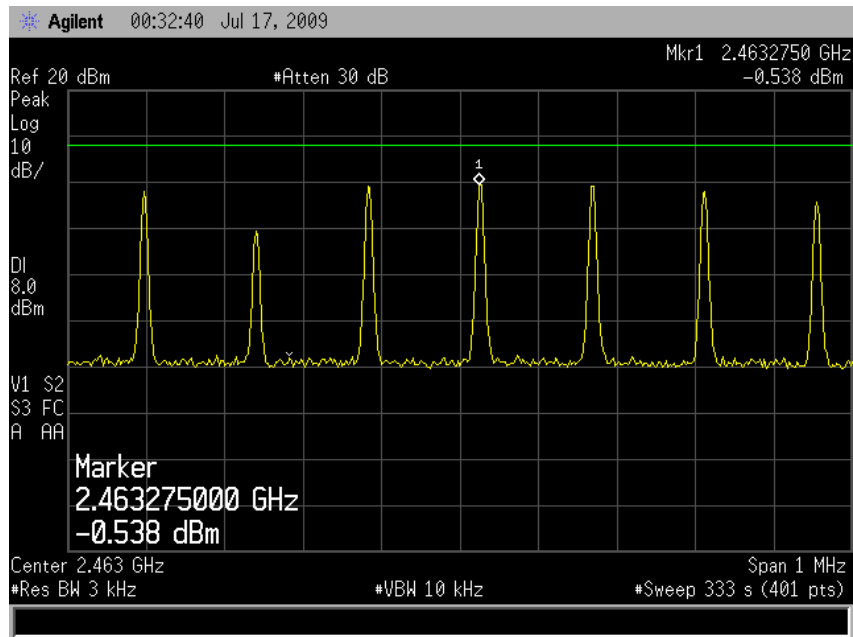


Plot 19 – Channel 1



PEAK POWER SPECTRAL DENSITY TEST

Peak Power Spectral Density Plots



MAXIMUM PERMISSIBLE EXPOSURE (MPE) TEST

FCC Part 1.1310 Maximum Permissible Exposure (MPE) Limits

The EUT shows compliance to the requirements of this section, which states the MPE limits for general population / uncontrolled exposure are as shown below:

Frequency Range (MHz)	Electric Field Strength (V/m)	Magnetic Field Strength (A/m)	Power Density (mW/cm ²)	Average Time (min)
0.3 - 1.34	614	1.63	100 ^{Note 2}	30
1.34 - 30	824 / f	2.19 / f	180 / f ² ^{Note 2}	30
30 - 300	27.5	0.073	0.2	30
300 - 1500	-	-	f / 1500	30
1500 - 100000	-	-	1.0	30
Notes				
1. f = frequency in MHz				
2. Plane wave equivalent power density				

FCC Part 1.1310 Maximum Permissible Exposure Computation

The minimum safe distance between the EUT and field probe was computed from the following formula:

$$d = \sqrt{[(30GP) / 377S]}$$

where

- S = Power density, 10W/m²
- P = 0.0891W
- d = Minimum safety distance, m
- G = Numerical isotropic gain, 1.6 (2.0dBi)

Substituting the relevant parameters into the formula:

$$d = \sqrt{[(30GP) / 377S]}$$

$$= 0.0337\text{m}$$

$$\approx 3.4\text{cm}$$

∴ The distance between users and the EUT shall be maintained at a minimum distance of 3.4cm during normal operation in order to ensure RF exposure to the users is within the allowable safety margin.

This Report is issued under the following conditions:

1. Results of the testing/calibration in the form of a report will be issued immediately after the service has been completed or terminated.
2. Unless otherwise requested, a report shall contain only technical results. Analysis and interpretation of the results and professional opinion and recommendations expressed thereupon, if required, shall be clearly indicated and additional fee paid for, by the Client.
3. This report applies to the sample of the specific product/equipment given at the time of its testing/calibration. The results are not used to indicate or imply that they are applicable to other similar items. In addition, such results must not be used to indicate or imply that TÜV SÜD PSB approves, recommends or endorses the manufacturer, supplier or user of such product/equipment, or that TÜV SÜD PSB in any way "guarantees" the later performance of the product/equipment.
4. The sample/s mentioned in this report is/are submitted/supplied/manufactured by the Client. TÜV SÜD PSB therefore assumes no responsibility for the accuracy of information on the brand name, model number, origin of manufacture, consignment or any information supplied.
5. Additional copies of the report are available to the Client at an additional fee. No third party can obtain a copy of this report through TÜV SÜD PSB, unless the Client has authorised TÜV SÜD PSB in writing to do so.
6. TÜV SÜD PSB may at its sole discretion add to or amend the conditions of the report at the time of issue of the report and such report and such additions or amendments shall be binding on the Client.
7. All copyright in the report shall remain with TÜV SÜD PSB and the Client shall, upon payment of TÜV SÜD PSB's fees for the carrying out of the tests/calibrations, be granted a license to use or publish the report to the third parties subject to the terms and conditions herein, provided always that TÜV SÜD PSB may at its absolute discretion be entitled to impose such conditions on the license as it sees fit.
8. Nothing in this report shall be interpreted to mean that TÜV SÜD PSB has verified or ascertained any endorsement or marks from any other testing authority or bodies that may be found on that sample.
9. This report shall not be reproduced wholly or in parts and no reference shall be made by the Client to TÜV SÜD PSB or to the report or results furnished by TÜV SÜD PSB in any advertisements or sales promotion.
10. Unless otherwise stated, the tests are carried out in TÜV SÜD PSB Pte Ltd, No.1 Science Park Drive Singapore 118221.

March 2009



EUT PHOTOGRAPHS / DIAGRAMS

ANNEX A

ANNEX A
EUT PHOTOGRAPHS / DIAGRAMS

EUT PHOTOGRAPHS / DIAGRAMS

ANNEX A

EUT PHOTOGRAPHS



Front View

EUT PHOTOGRAPHS / DIAGRAMS

ANNEX A

EUT PHOTOGRAPHS

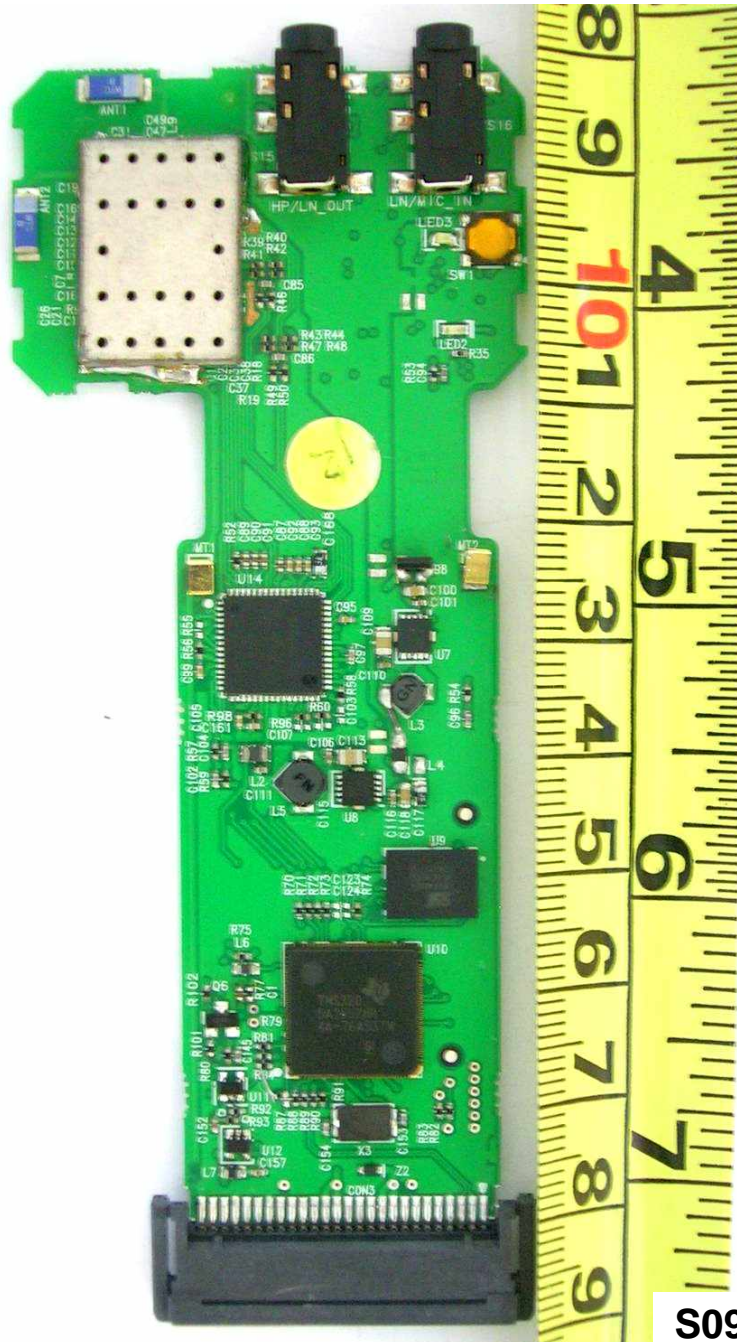


Rear View

EUT PHOTOGRAPHS / DIAGRAMS

ANNEX A

EUT PHOTOGRAPHS



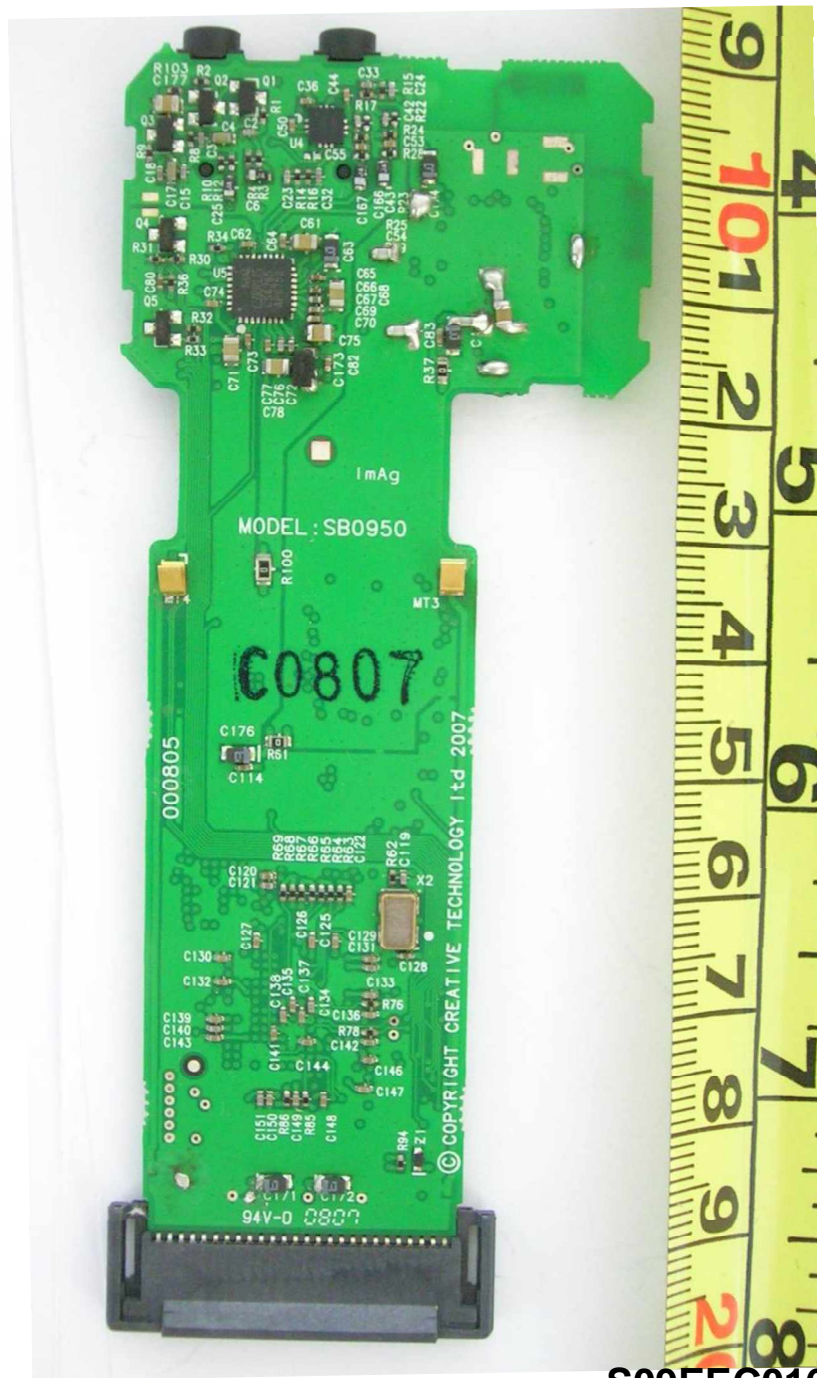
S09EEC01644

Main-Board - Component Side

EUT PHOTOGRAPHS / DIAGRAMS

ANNEX A

EUT PHOTOGRAPHS



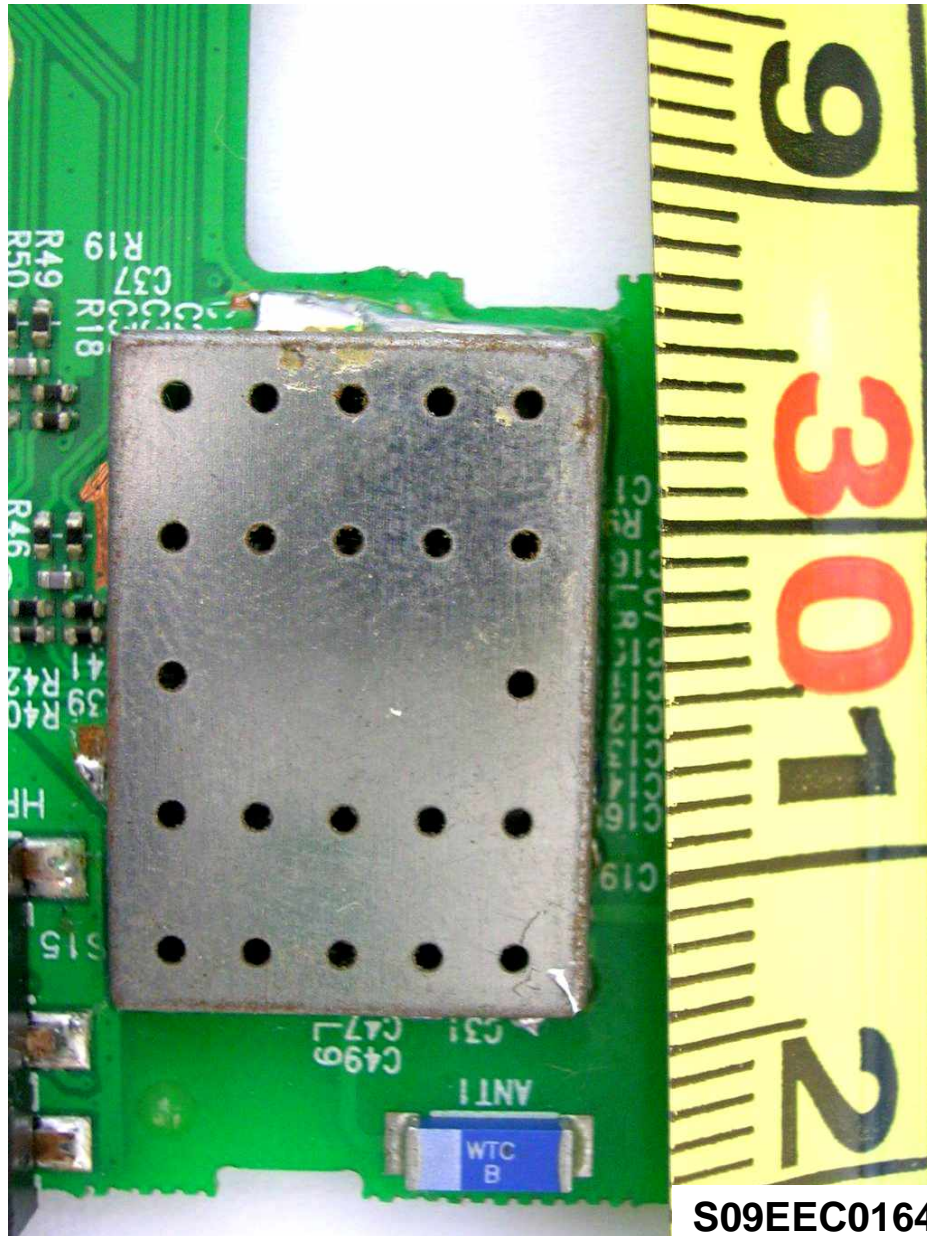
Main-Board - Trace Side

S09EEC01644

EUT PHOTOGRAPHS / DIAGRAMS

ANNEX A

EUT PHOTOGRAPHS



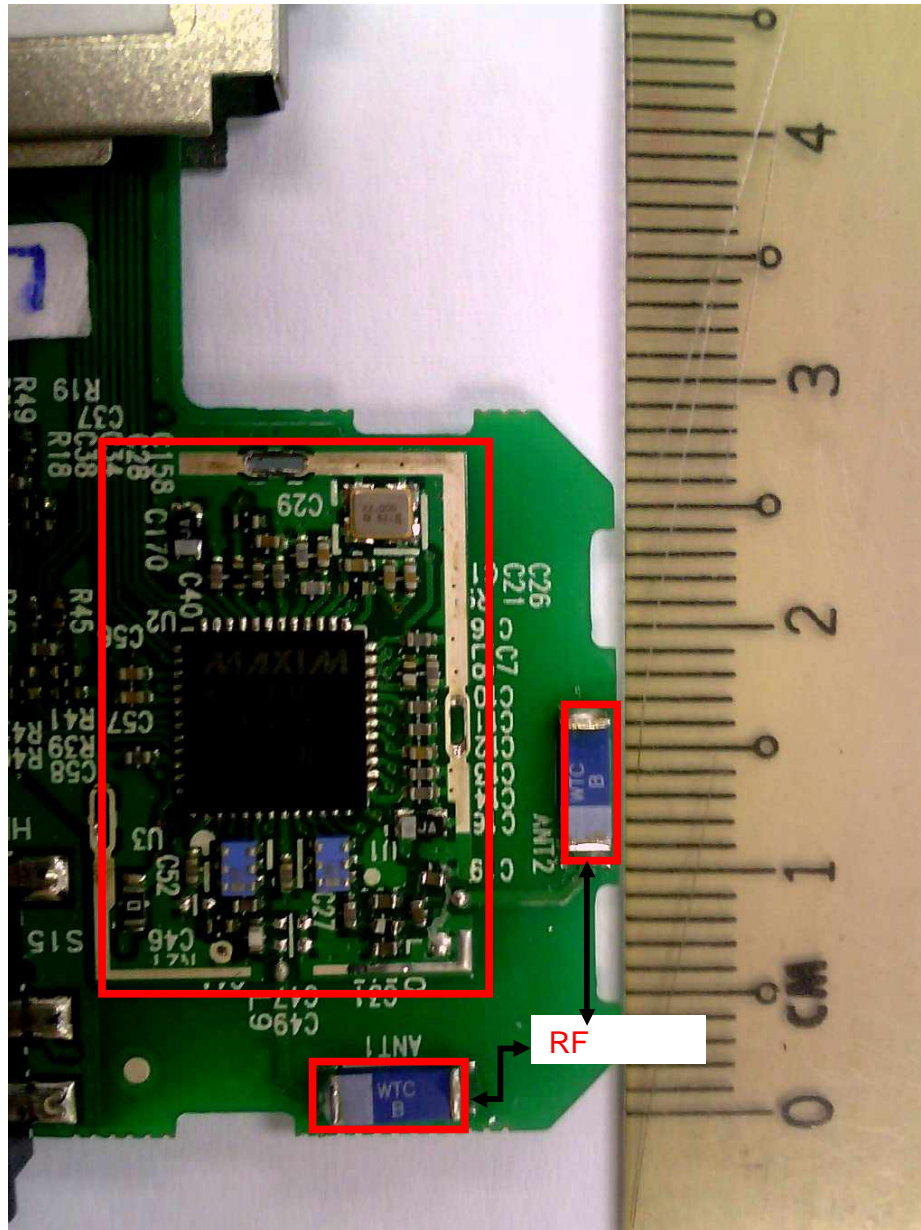
S09EEC01644

RF Module Circuit with RF Shield

EUT PHOTOGRAPHS / DIAGRAMS

ANNEX A

EUT PHOTOGRAPHS



RF Module Circuit with RF Shield Removed

FCC LABEL & POSITION

ANNEX B

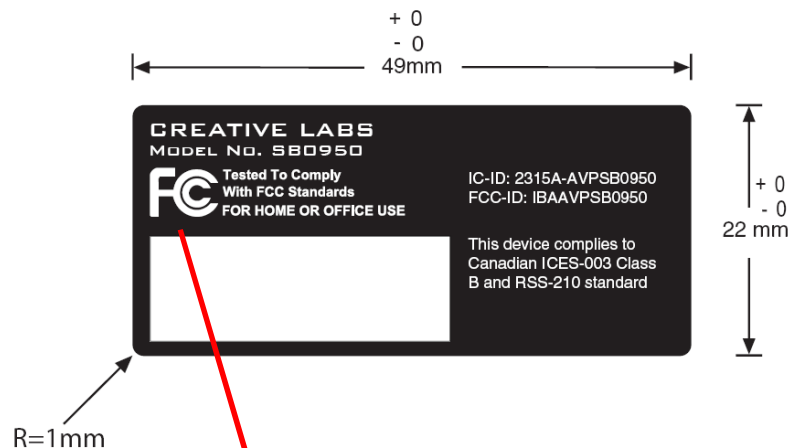


FCC LABEL & POSITION

ANNEX B

Labelling requirements per Section 2.925 & 15.19

The label shown will be permanently affixed at a conspicuous location on the device and be readily visible to the user at the time of purchase.



Sample Label



Physical Location of FCC Label on EUT

**USER MANUAL TECHNICAL DESCRIPTION BLOCK
& CIRCUIT DIAGRAM**

ANNEX C

