

205-M2003-00 REV C

AIS DISPLAY

205-M2003-00
A00002*11
REV C

TESTED

PROGRAMED

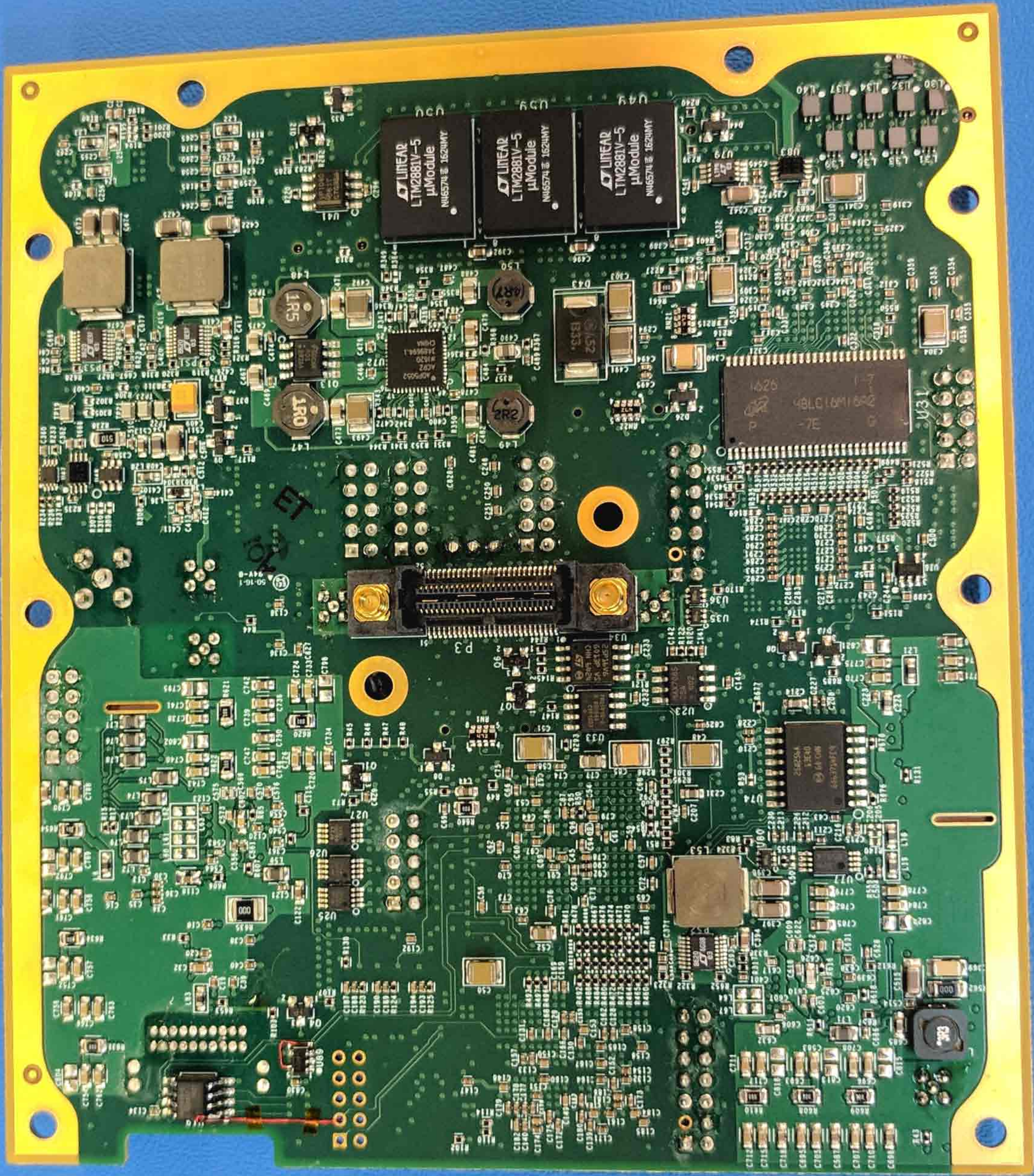
- SW4 (D8, D18, D28)
- SW5 (D10, D20, D30)
- SW6 (D12, D22, D32)
- SW7 (D14, D24, D34)
- SW11 (D36, D46, D56)
- SW12 (D38, D48, D58)
- SW13 (D40, D50, D60)
- SW14 (D42, D52, D62)
- SW18 (D8, D18, D28)
- SW19 (D11, D21, D31)
- SW20 (D13, D23, D33)
- SW21 (D15, D25, D35)
- SW2 (D29, D39, D49)
- SW17 (D31, D41, D51)
- SW10 (D33, D43, D53)
- SW3 (D35, D45, D55)

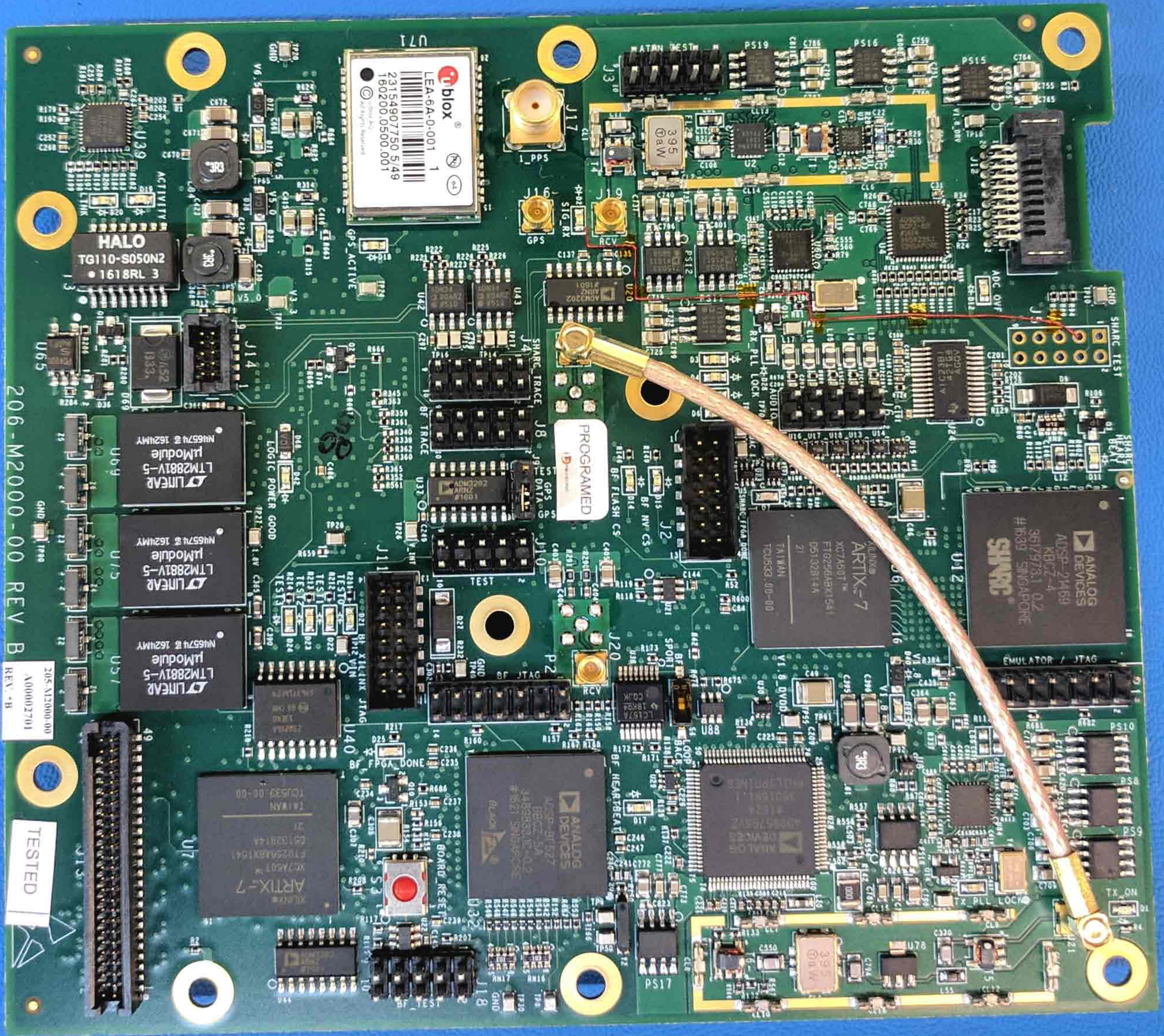
- SW15 (D53, D63)
- SW8 (D47, D57)
- SW1 (D17, D27)
- SW16 (D45, D55)
- SW9 (D19, D29)

SW22 (D10, D20, D30, D40, D50, D60, D70)

AQ1

0





TI b10x
LEA-6A-0-0-01
2315490750 5049
160200.0500.001

HALO
TG110-S050N2
1618RL 3

PROGRAMMED

ANALOG DEVICES
ARTIX-7
XC7A010
F7029ABR10-1
D510201-14
TQ593 100-00

ANALOG DEVICES
ARTIX-7
XC7A010
F7029ABR10-1
D510201-14
TQ593 100-00

LINEAR
LTM2881V-5
N16574 162MHV

LINEAR
LTM2881V-5
N16574 162MHV

LINEAR
LTM2881V-5
N16574 162MHV

206-M2000-00 REV B
A00002701

TESTED

