

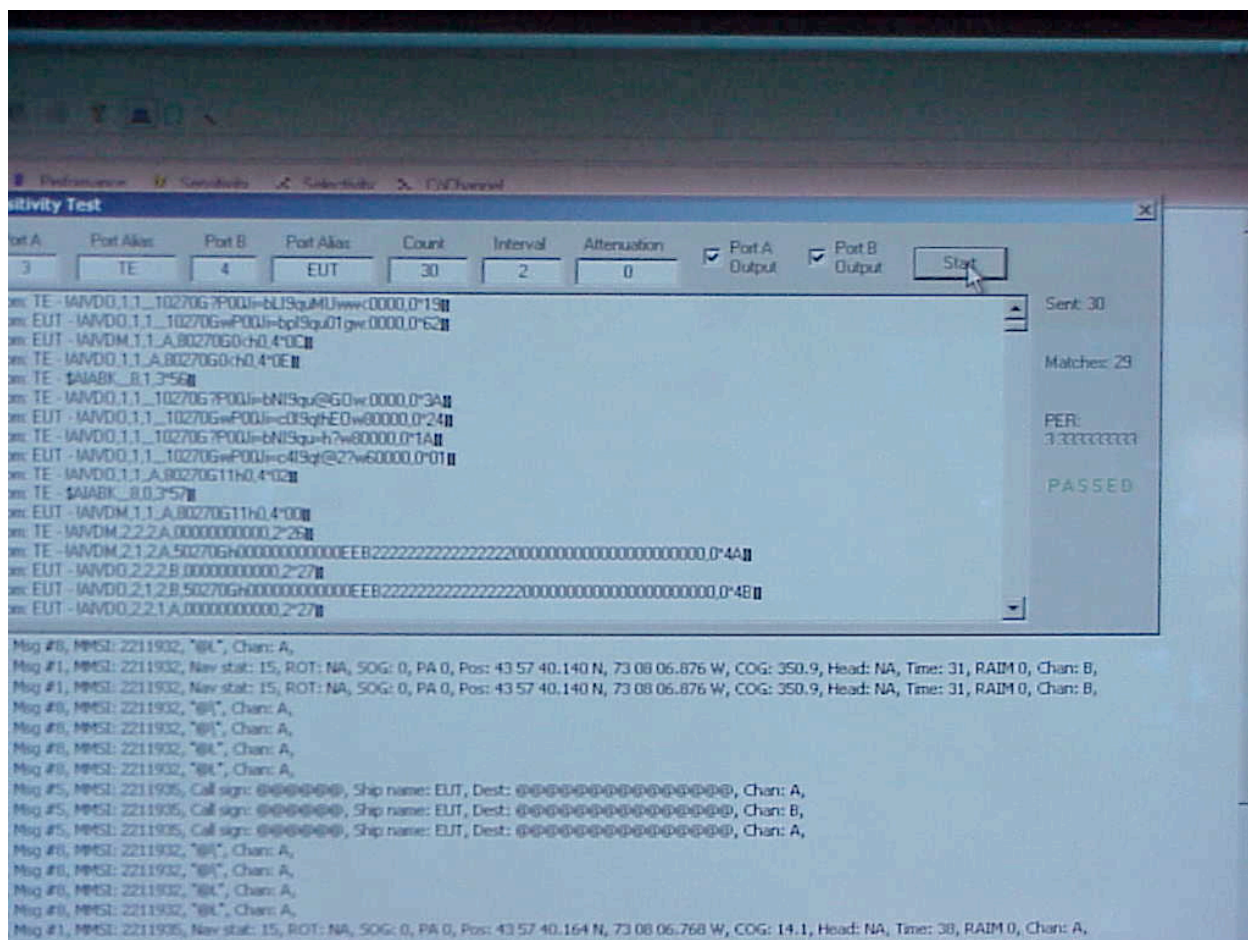
VIII. Measurement Results for AIS Physical Tests Cont'd:

5. Sensitivity (Error at High Input).

Specification: -7 dBm @ 0.01% BER Normal

Attenuator Settings: +41 dBm Out - 40 Fixed - 8 Variable = -7 dBm at EUT

* Unit unaffected by signal at maximum level.



VIII. Measurement Results for AIS Physical Tests Cont'd:

5. Sensitivity (DSC Results).

Specification: -107 dBm @ 0.01 BER Normal

Attenuator Settings: +33 dBm Out - 60 Fixed - 80 Variable = -107 dBm at EUT

* No differences noted. Below: First 36 data points of 8192. All data in spreadsheet on CD.

[illegible]

VIII. Measurement Results for AIS Physical Tests Cont'd:

5. Sensitivity (DSC Error at High Input).

Specification: -7 dBm @ 20% PER Normal

Attenuator Settings: +41 dBm out - 40 Fixed - 8 Variable = -7 dBm at EUT

* No differences noted. Below: First 36 data points of 8192. All data in spreadsheet on CD.

[illegible]

