

Report No.: 0306822
Model No.: S2-235

Pursuant to FCC Part 15 Section 15. 207 Emissions Requirement

1/2

REF 107.0 dBμV

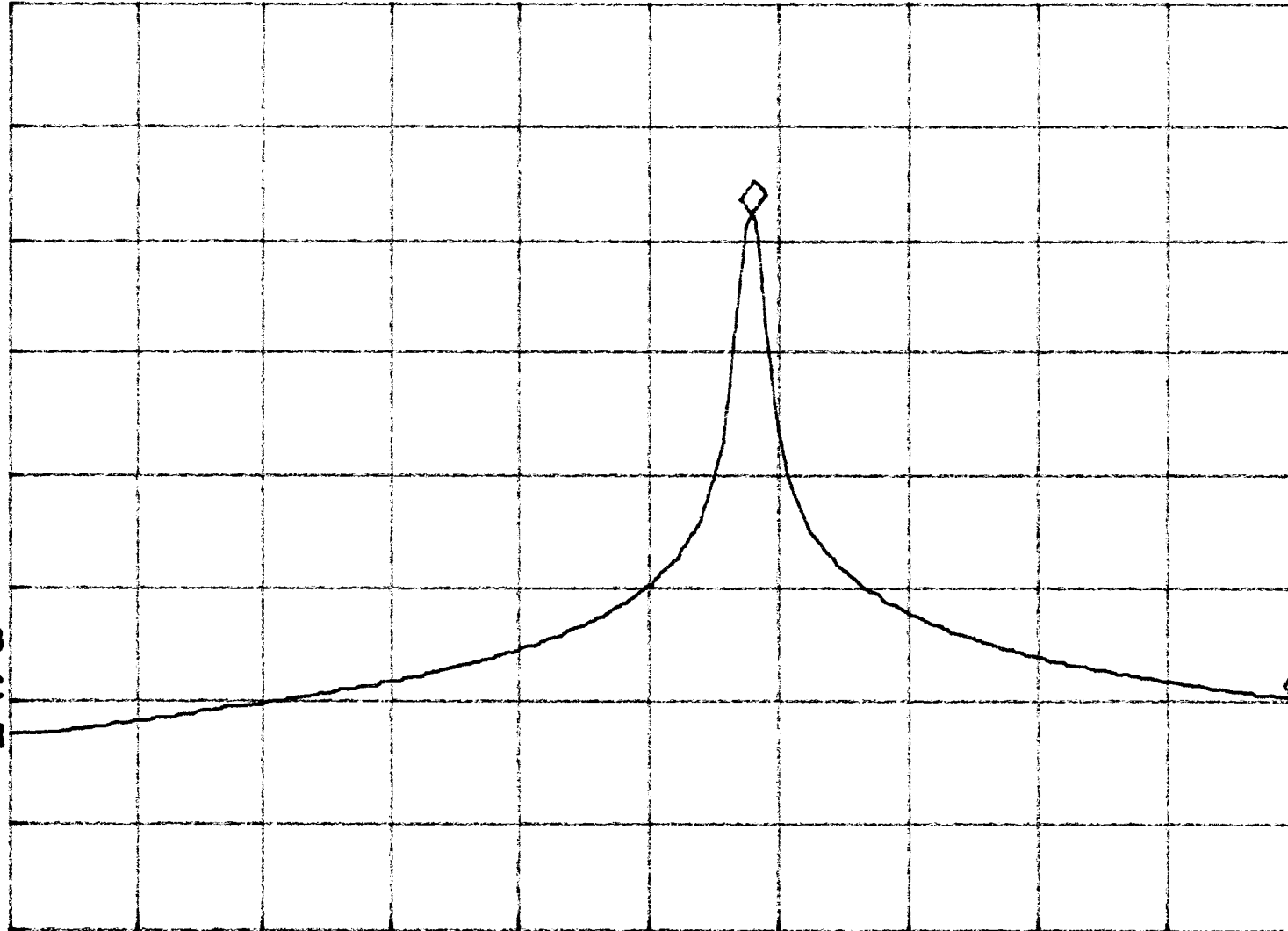
AT 10 dB

MKR 134.4 KHz

-42.43 dB

PEAK
LOG
10
dB/

VA SB
SC FC
CORR



Tested By: KL
(Kenrick Wong)
Date: 10/5/03
LW

Checked By: [Signature]
(Anthony Chen)
Date: 11/3/03

Test Result: Pass / Fail / NA

START 26.9600 MHz

#RES BW 3.0 KHz

VBW 3 KHz

STOP 27.2800 MHz

#SWP 1.00 sec