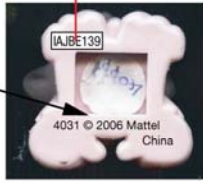


BE 4031 Monkey  
Engraving: ■ 0.4mm  
May 4, 2006



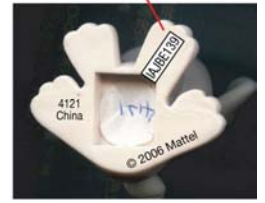
FCC ID Label  
size: 9mm x 3mm  
color: Black  
June 2, 2006



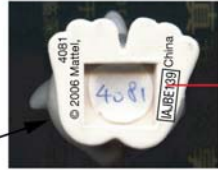
BE 4121 Bunny  
Engraving: ■ 0.4mm  
May 4, 2006



FCC ID Label  
size: 9mm x 3mm  
color: Black  
June 2, 2006



BE 4081 Penguin  
Engraving: ■ 0.4mm  
May 4, 2006

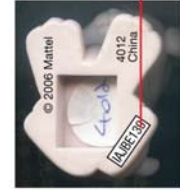


FCC ID Label  
size: 9mm x 3mm  
color: Black  
June 2, 2006

BE 4012 Puppy 2  
Engraving: ■ 0.4mm  
May 4, 2006



FCC ID Label  
size: 9mm x 3mm  
color: Black  
June 2, 2006

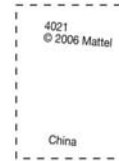


BE 4051 Lion cub  
Engraving: ■ 0.4mm  
May 4, 2006

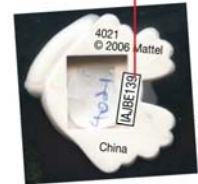


FCC ID Label  
size: 9mm x 3mm  
color: Black  
June 2, 2006

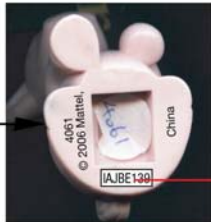
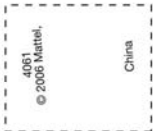
BE 4021 Kitten 2  
Engraving: ■ 0.4mm  
May 4, 2006



FCC ID Label  
size: 9mm x 3mm  
color: Black  
June 2, 2006

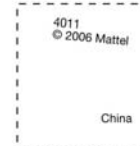


BE 4061 Pony 1  
Engraving: ■ 0.4mm  
May 4, 2006

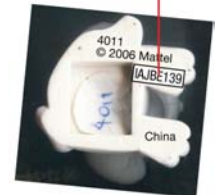


FCC ID Label  
size: 9mm x 3mm  
color: Black  
June 2, 2006

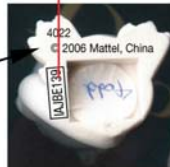
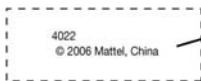
BE 4011 Puppy 1  
Engraving: ■ 0.4mm  
May 4, 2006



FCC ID Label  
size: 9mm x 3mm  
color: Black  
June 2, 2006

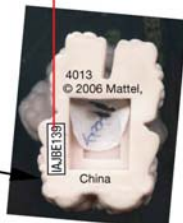
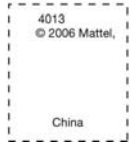


BE 4022 Kitten 1  
Engraving: ■ 0.4mm  
May 4, 2006



FCC ID Label  
size: 9mm x 3mm  
color: Black  
June 2, 2006

BE 4013 Poodle  
Engraving: ■ 0.4mm  
May 4, 2006



BE-139 Bottom panel  
Engraving: 0.4mm  
June 5, 2006

3.000 mm  
53.975 mm

FCC ID: IAJBE139  
This device complies with part 15 of the FCC Rules. Operation is subject to the following two conditions: (1) This device may not cause harmful interference, and (2) this device must accept any interference received, including interference that may cause undesired operation.

23.000 mm  
53.975 mm

BE-139  
DC 6V "AA" (R6) (UM-3) Size x 4  
© 2006 Mattel Inc. KIDdesigns Inc.  
Made in China.  
1-888-TOY-TOYS  
toytoysonline.com  
Patent Pending

