

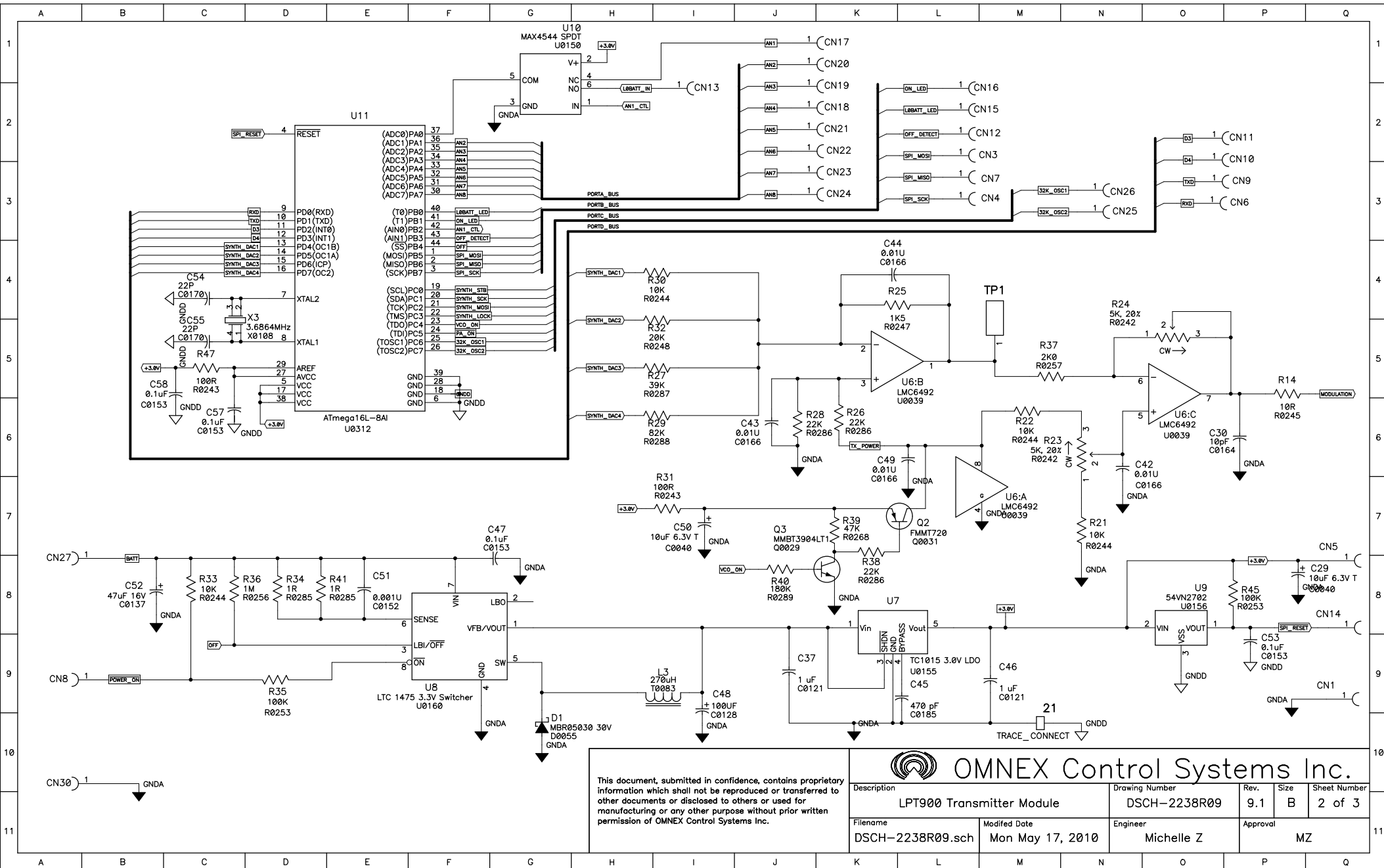
Rev.	Description	Date	Approval
1	Initial design	Oct 1, 2001	M. Steenblok
2	First Revision	May 9, 2002	M. Steenblok
3	Second Revision	Jun 14, 2002	M. Steenblok
4	Third Revision	Nov 26, 2002	M. Steenblok
5	Fourth Revision	Feb 27, 2003	M. Steenblok
6	Fifth Revision	Apr 17, 2003	M. Steenblok
7	Sixth Revision	Oct 2, 2003	M. Steenblok
8	Seventh Revision	Dec 15, 2003	M. Steenblok
8.1	MCU changed from 8535 U0278 to Mega16 U0315	Jun 18, 2004	M. Steenblok
9	<p>Removed Obsolete Synthesizer Part No: U0307 Removed Obsolete Loop Filter Part No: R9 - R0244 C21: C0155 R14: R0259 C20, C19: C0169 R13: R0254 C17: C0207 R12: R0262 R8: R0295</p> <p>Added Synthesizer Part No. U10: U0456 Added Loop Filter Part No: C17: C0266 C19: C0319 R2: R0300 R9: R0297 C20: C0309 Added Fast Lock Resistor Part No, R12- R0461 Added Synth Power Supplys Part No: R48, R46, R49: R0246 C58, C57, C60: C0153 Added Switch Part No: U11: U0325 Added Switch caps and res Part No: C59: C0243 R8: R0274 Added Inverter Part No. U3: U0302 Added Inverter decoupling caps Part No. C48, C50: C0243</p> <p>Removed L1: T0047 Added L1: T0131</p> <p>Removed discrete filter Part No C10,C13: C0184 L2, L3: T0107 C12: C0188 Added SAW filter Part No. X3: X01138 Added C10: 100pF</p> <p>Removed unsealed pots and replaced with sealed pots Remove R24, R22 Part No. R0032 Add R24, R22 Part No. R0242 Change resistance to facilitate pot tuning Removed R37: R0246 Added R37: R0257</p> <p>Change R2, R12, R11 and R13 to R0313</p>	Mar 22, 2010	M. Zuliani

This document, submitted in confidence, contains proprietary information which shall not be reproduced or transferred to other documents or disclosed to others or used for manufacturing or any other purpose without prior written permission of OMNEX Control Systems Inc.



OMNEX Control Systems Inc.

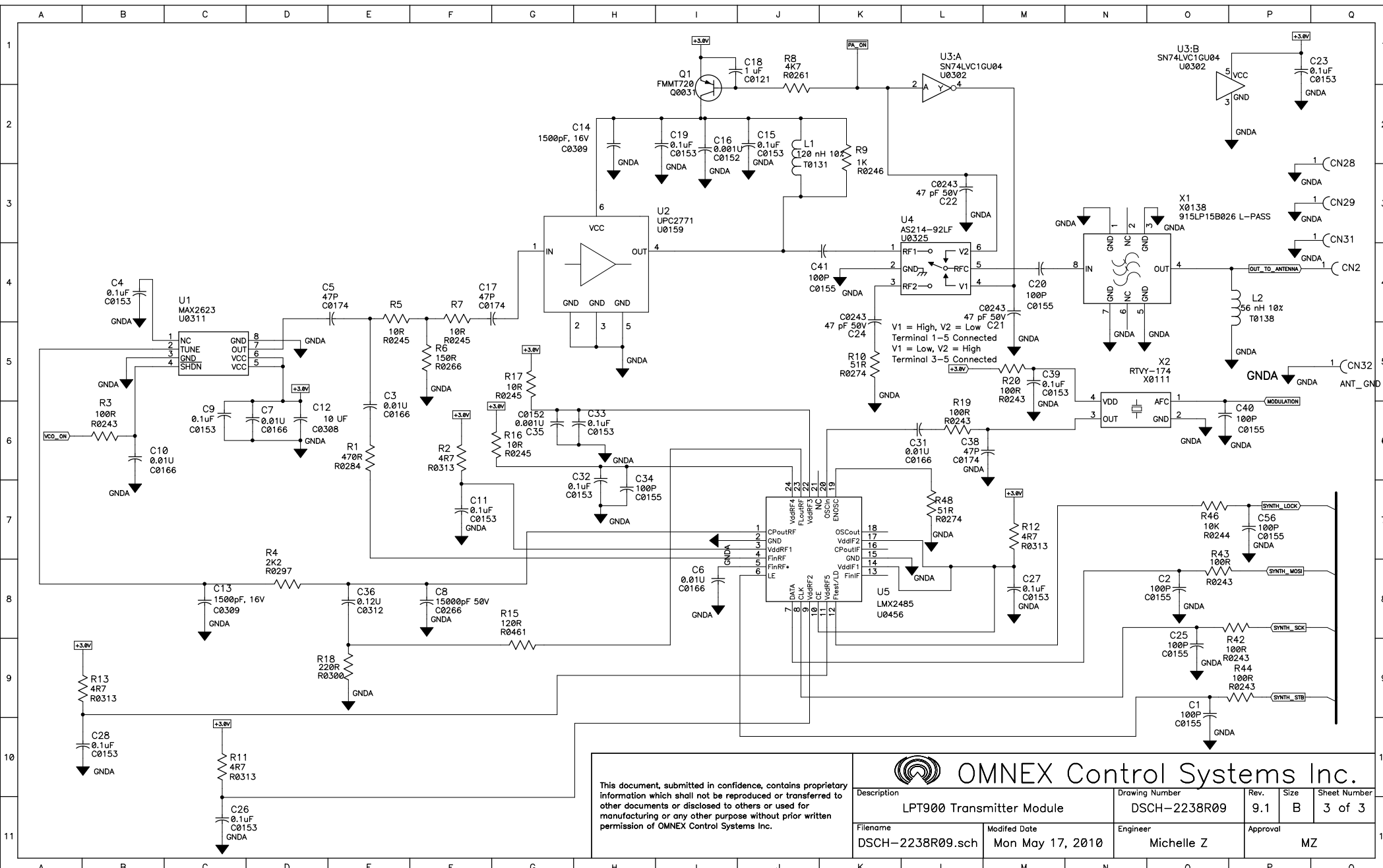
Description LPT900 Transmitter Module		Drawing Number DSCH-2238R09		Rev. 9.1	Size B	Sheet Number 1 of 3
Filename DSCH-2238R09.sch	Modified Date Mon May 17, 2010	Engineer Michelle Z		Approval MZ		



This document, submitted in confidence, contains proprietary information which shall not be reproduced or transferred to other documents or disclosed to others or used for manufacturing or any other purpose without prior written permission of OMNEX Control Systems Inc.

OMNEX Control Systems Inc.

Description LPT900 Transmitter Module		Drawing Number DSCH-2238R09		Rev. 9.1	Size B	Sheet Number 2 of 3
Filename DSCH-2238R09.sch	Modified Date Mon May 17, 2010	Engineer Michelle Z	Approval MZ			



This document, submitted in confidence, contains proprietary information which shall not be reproduced or transferred to other documents or disclosed to others or used for manufacturing or any other purpose without prior written permission of OMNEX Control Systems Inc.

OMNEX Control Systems Inc.

Description		Drawing Number		Rev.	Size	Sheet Number
LPT900 Transmitter Module		DSCH-2238R09		9.1	B	3 of 3
Filename	Modified Date	Engineer	Approval			
DSCH-2238R09.sch	Mon May 17, 2010	Michelle Z	MZ			