

WX5512-T0

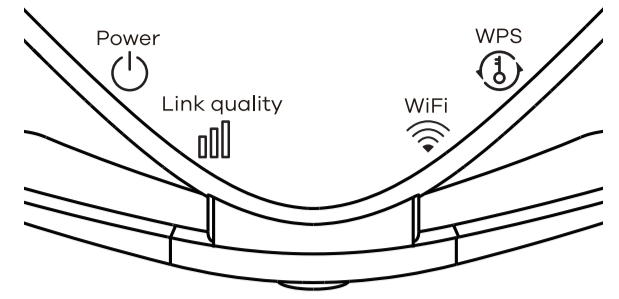
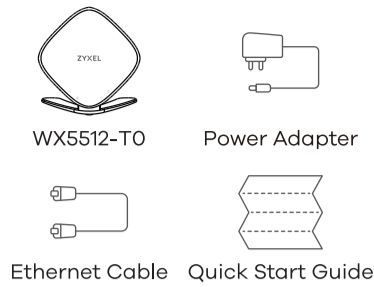
AX6000 Gigabit Wireless Extender
Zyxel MPro Mesh™ Whole-home WiFi Solution

A member of the Zyxel MPro Mesh solution family.
MPro Mesh Solution:
• EX5512-T0
• MPro Mesh App

Visit www.zyxel.com/us/en for updated information.

Quick Start Guide

Package Contents



US Importer

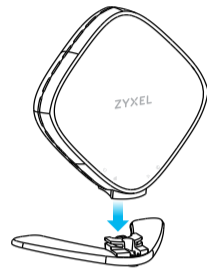
Zyxel Communications, Inc
1130 North Miller Street Anaheim, CA 92806-2001
<https://www.zyxel.com/us/en/>

Support Information

North America ☎ +1 800 978 722
USA ✉ support@zyxel.com

Copyright © 2022 Zyxel and/or its affiliates. All Rights Reserved

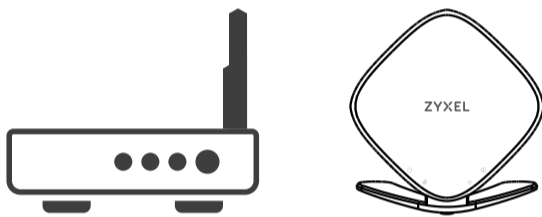
Step 1 Hardware Installation



Attach the bracket to the bottom of the WX5512-T0 as shown.
See the back side if you want to mount the WX5512-T0 on a wall after the initial setup.

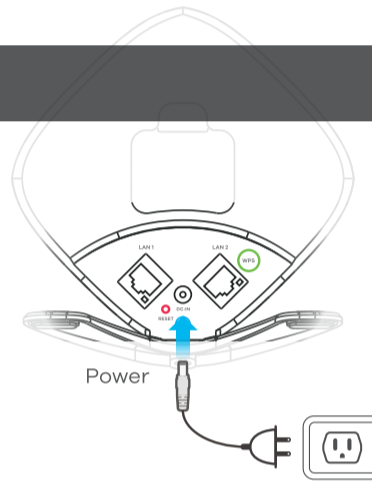
Step 2 Connect via WiFi (See the back side to connect via cable.)

1 Place the WX5512-T0 Near Your Modem/Router



Place your WX5512-T0 next to your modem/router (within 2 meters) for initial setup.
You can move the WX5512-T0 to a new location after the initial setup.

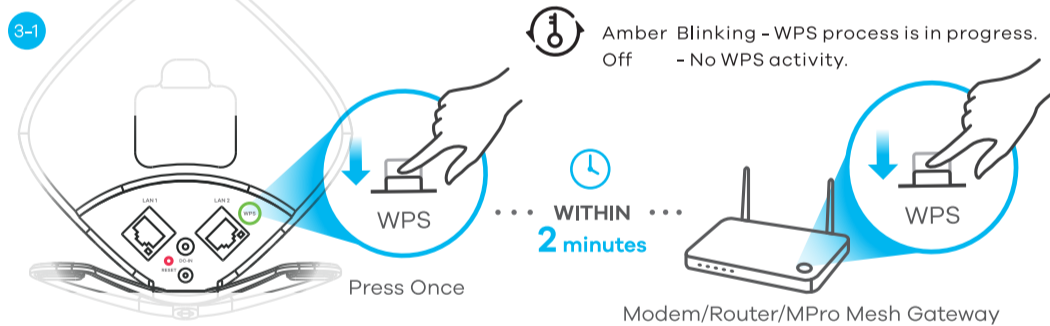
2 Power on



Green Blinking - System is booting.
On - System is ready.
Red On - System has failed.
Off - System is powered off.

Use the included power adaptor to connect the WX5512-T0 power socket to an appropriate power outlet and wait until the power LED stays on solid green. If the LED does not stay on solid green, un-plug the power adaptor and plug it back in again.

3 Connect the WX5512-T0 to Your Modem/Router



Press the **WPS** button once, the WX5512-T0 WPS LED blinks amber.
Within Two minutes, press the WPS button on your modem/router. Then the WiFi LED blinks slowly (1 sec on and 1 sec off) during setup. If the WX5512-T0 WPS LED turns red, do the process again.

3-2 WiFi LED blinks slowly (1 sec on and 1 sec off) during setup.

WAIT 2 minutes

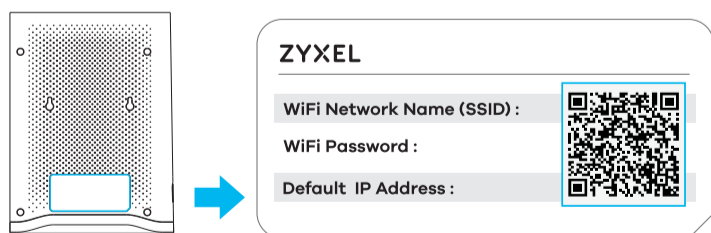
Link quality LED On or Blinking - The WX5512-T0 is connected to the modem/router.
WiFi LED On or Blinking - Your WX5512-T0 is ready for your wireless devices to connect.

Wait Two minutes. When the link quality and WiFi LED are on or blinking, you can go to the next step to connect your wireless device to the WiFi.

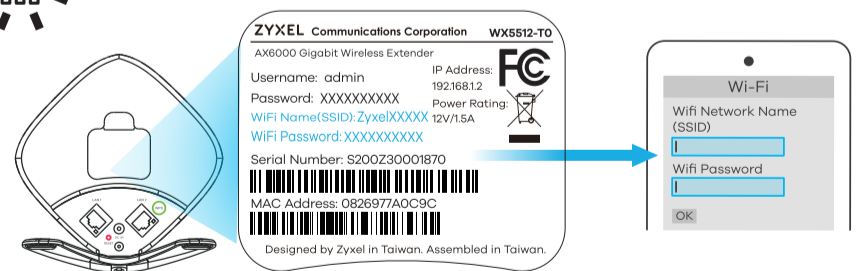
4 Connect Your Device to the WiFi

Check whether the link quality LED is **SOLID ON** or **BLINKING**.

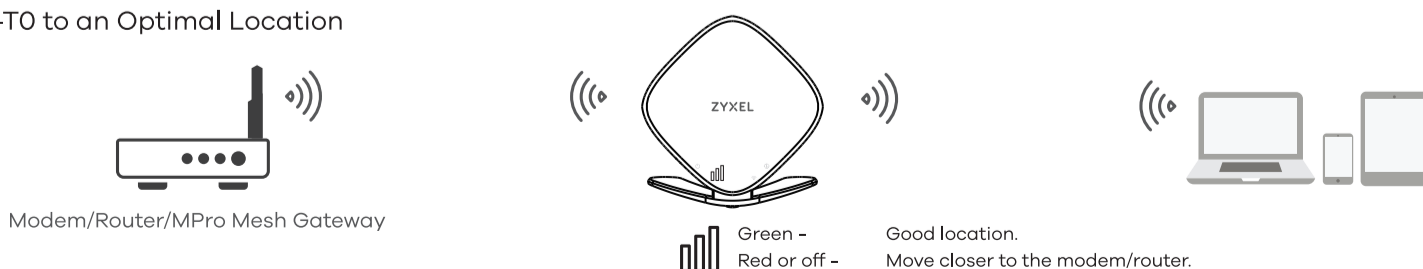
If **SOLID ON**: Your WX5512-T0 has synced the WiFi name (SSID)/password with your Zyxel gateway. Connect your wireless device to the existing WiFi name (SSID). The default WiFi name and password are on the Zyxel gateway back label.



If **BLINKING**: Connect your wireless device to the WiFi name (SSID)/password on the WX5512-T0 back label.



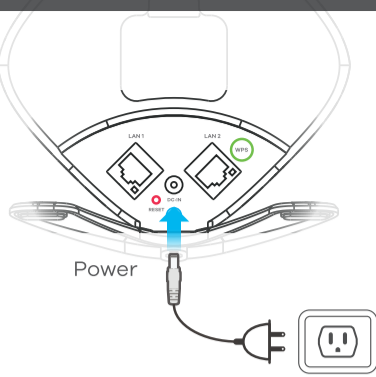
5 Relocate the WX5512-T0 to an Optimal Location








Unplug your WX5512-T0 and move it to a new location about halfway between your modem/router and the area with a poor WiFi signal.
Plug in your WX5512-T0.
The WX5512-T0 must be within range of your modem/router WiFi network. If the link quality LED is OFF or RED, move the WX5512-T0 closer to the modem/router and try again until the link quality LED lights green.
Now you can use WiFi and the internet.

Connect via Cable (Optional)

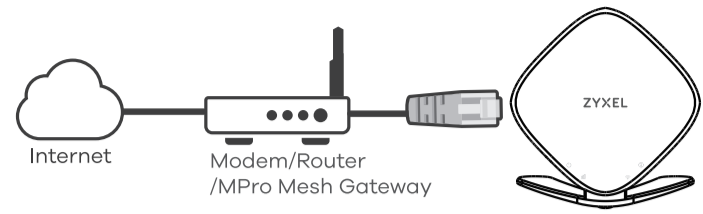
1 Power on



 **Green** Blinking - System is booting.
 **Green** On - System is ready.
 **Red** On - System has failed.
 **Off** - System is powered off.

Use the included power adaptor to connect the WX5512-T0 power socket to an appropriate power outlet and wait until the power LED  stays on solid green. If the LED does not stay on solid green, un-plug the power adaptor and plug it back in again.


2 Connect the WX5512-T0 to Your Modem/Router



Use the included Ethernet cable to connect **LAN1** or **LAN2** on the WX5512-T0 to an Ethernet port on your modem/router.

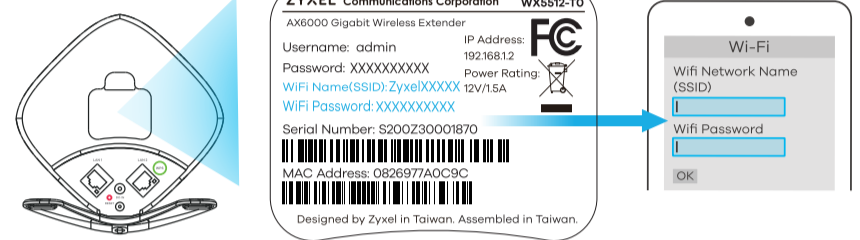
3 Connect Your Device to the WiFi

Check whether the link quality LED is **SOLID ON** or **BLINKING**.

 If **SOLID ON**: Your WX5512-T0 has synced the WiFi name (SSID)/password with your Zyxel gateway. Connect your wireless device to the existing WiFi name (SSID). The default WiFi name and password are on the Zyxel gateway back label. Now you can use WiFi and the internet.

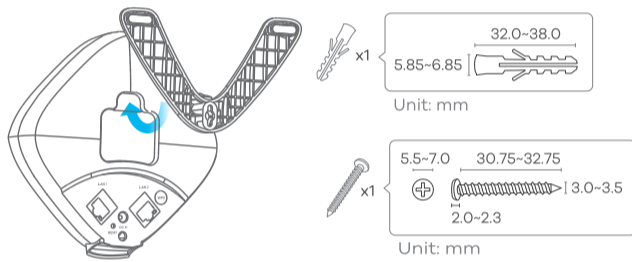


If **BLINKING**: Connect your wireless device to the WiFi name(SSID)/password on the WX5512-T0 back label. Now you can use WiFi and the internet.

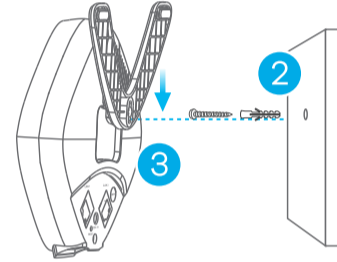


Wall Mounting (Optional)

1

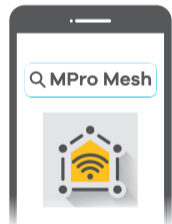


Attach the bracket to the back of the WX5512-T0 as shown.
Drill a hole in the wall. Insert the screw anchor in the hole and install the screw.



Place the WX5512-T0 so the wall mount hole lines up with the screw. Slide the WX5512-T0 down gently to fix it into place.

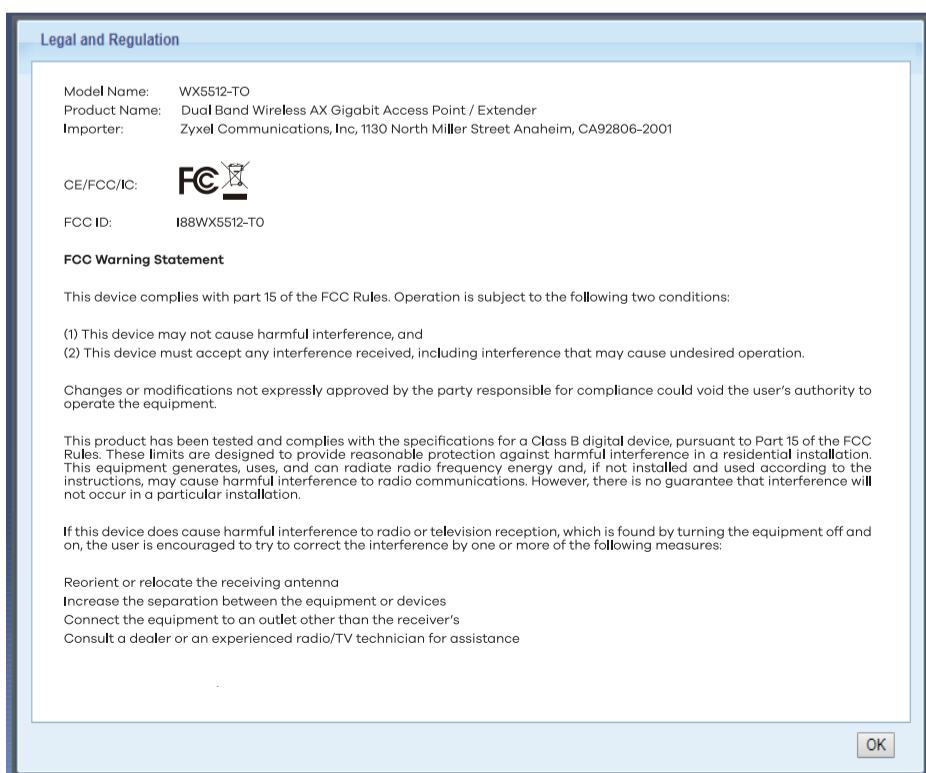
MPro Mesh App



If you are using a Zyxel MPro Mesh gateway, you can use the MPro Mesh app to manage the Zyxel MPro Mesh system including the WX5512-T0.

FCC Legal Information

The FCC legal information displays after you log into the web configurator. You can also see it by going to <http://x.x.x.x/legalInfo>. Where "x.x.x.x" is the WX5512-T0's IP address.



LED Descriptions

| | | |
|--------------|------------------------|--|
| POWER | Green | On - The WX5512-T0 is ready. |
| | Blinking | The WX5512-T0 is starting up or under the MPro Mesh configuration process. |
| Link Quality | Red | On - The WX5512-T0 detects a system error. |
| | Blinking (fast) | The WX5512-T0 is upgrading firmware. |
| | Blinking (slow) | The Easy Mesh process has failed. |
| | Off | Not receiving power. |
| WiFi | Green | On - The WiFi connection to the MPro Mesh router is good. |
| | Red | On - The signal is too weak. |
| WPS | Green | On - The Ethernet cable is connected to the WX5512-T0 LAN port. |
| | Green | On - 2.4G and 5G wireless radios are ready. |
| | Blinking | Sending and receiving data. |
| WPS | Slow Blinking | (1 sec on and 1 sec off.) The WX5512-T0 is applying WiFi settings. |
| | Off | The 2.4G or 5G wireless radio is not ready or has failed. |
| WPS | Amber | Blinking - The WPS process in progress. |
| | Off | No WPS activity. |

FCC Radiation Exposure Statement

- This device complies with FCC RF radiation exposure limits set forth for an uncontrolled environment.
- This transmitter must be at least 45 cm from the user and must not be co-located or operating in conjunction with any other antenna or transmitter.
- Operation of this device is restricted to indoor use only, except for relevant user's manual mention that this device can be installed into the external environment.

Safety Warnings

The safety warning displays after you log into the web configurator. You can also see it by going to <http://x.x.x.x/safetyInfo>. Where "x.x.x.x" is the WX5512-T0's IP address.