

P-660HN(U)-Tx v2

802.11n2x2 WirelessADSL2+4-portGateway

QuickStartGuide

Version3.10

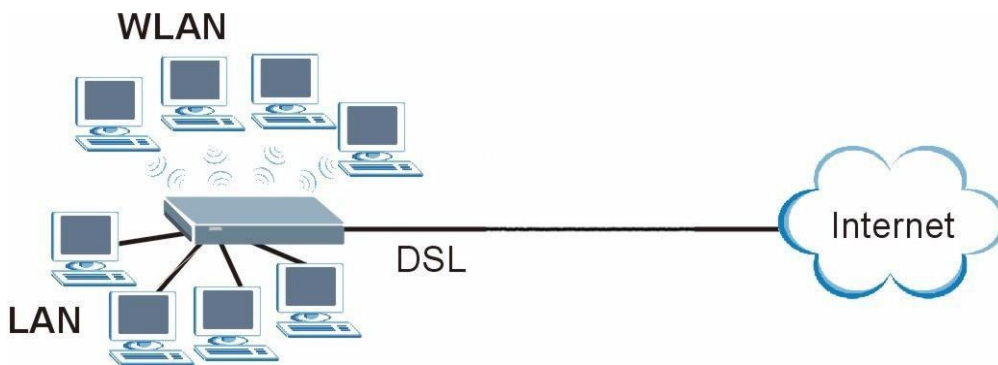
7/2012

Edition2

Overview

The P-660HN(U)-Tx v2 is a wireless ADSL router with a four-port built-in switch.

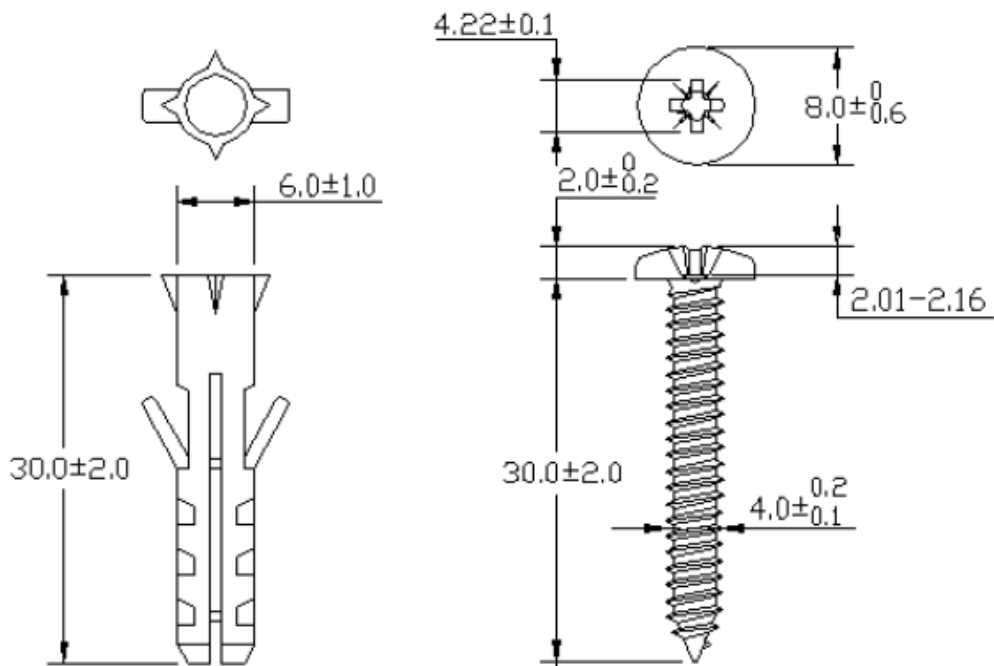
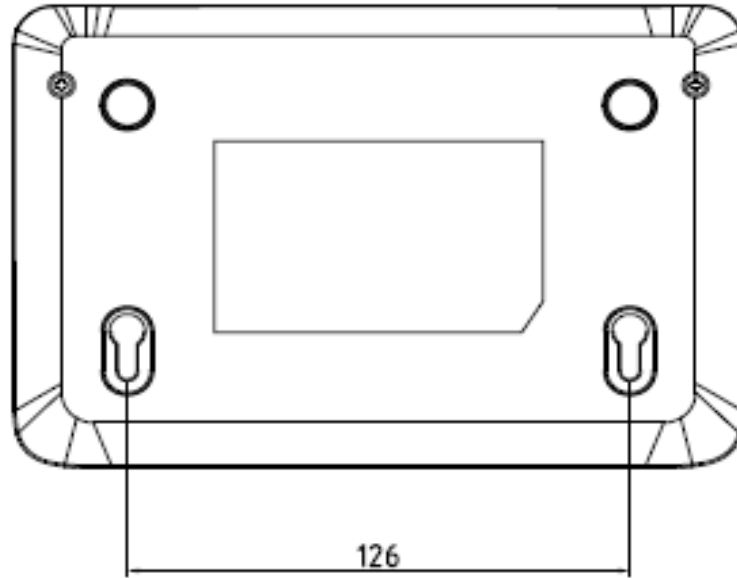
This Quick Start Guide shows you how to use the P-660HN(U)-Tx v2 to connect to the Internet and how to configure the device settings to connect wirelessly.



See your User's Guide for background information on all features.

Quick Login Information

| | |
|--------------------------------|---|
| LAN IP address | http://192.168.1.254 |
| default administrator password | Check back label for the info |



If you want to mount this product onto the wall, please follow below step.

Step 1: use screws (Dimension:4.0mm) fix bracket into the wall

Step 2: put equipment mount on bracket

Note: The device is designed to allow both vertical and wall mounted usage.

Hardware Connections

1 DSL: Use the gray telephone wire to connect your P-660HN(U)-Tx

v2 DSL port to a telephone jack (or to the modem port on a splitter if you are using one).

2 ETHERNET: Use the yellow Ethernet cable to connect a computer to an **ETHERNET** port for initial configuration and/or Internet access.

3 POWER: Use the included power adaptor to connect an appropriate power source to the **POWER** socket. Make sure the power source is on.

4 Push in the **POWER** button.

5 Look at the lights on the front panel.

- The **POWER** light blinks while your P-660HN(U)-Tx v2 starts up and stays on once it is ready.
- Each **ETHERNET** light stays on if the corresponding **ETHERNET** port is properly connected and blinks when there is traffic.
- The **DSL** light is on when the P-660HN(U)-Tx v2 has a DSL connection.
-

The **INTERNET** light is on when you are able to access the Internet and blinks when the P-660HN(U)-Tx v2

is sending or receiving data. Wait a couple

of minutes while your device checks the connection.

If any of these lights are not on, check your connections and inspect your cables for damage. If the lights are still off, contact your local vendor.

2 Internet Connection Setup: Automatic

Use this section to have your P-660HN(U)-Tx

v2 automatically detect and set up your Internet connection.

1 Open your web browser to a website. Wait while your P-660HN(U)-Tx

v2 tries to detect your DSL connection to your ISP. This may take a few minutes.

2 After it detects the connection, the DSL light shows green on your device and the

Internet light comes on when the Internet is ready for you to use. If

you have a PPPoE connection, you will have to enter your username and password.

3 Go to section [3](#) if you wish to configure your wireless settings.

4 If you do not see the connection test screen, or the connection test is not

successful, follow the instructions in the screen below, or check your connections and restart the P-

660HN(U)-Tx v2. If you still cannot access the

Internet, follow the steps in section [3](#).

3 Configuring your Wireless Settings

To create a wireless network, the P-660HN(U)-Tx v2 and your wireless computer must all use the same SSID (network name), channel and security settings.

If you do not set wireless security then anyone within range could use your P-660HN(U)-Tx v2 to access your network and the Internet.

Choose WPA-PSK wireless security if your wireless device supports it as it is stronger than WEP. Otherwise choose WEP.

1 Select **Active** and click **Next** to continue. It is strongly recommended that **Enable OTIS** is NOT selected.

See section 7 for more information.

2 Configure your wireless settings in the screen. Click **Next**.

3 If you select either **WEP** or **WPA-PSK** security (recommended), then follow the directions to enter the appropriate key. Click **Next** to continue and **Apply** to save your wireless LAN settings.

4 Check your configuration and write down your wireless LAN settings for later use. Click **Finish** to complete and save the wizard setup.

5 Your Internet is ready for you to use. Open your browser and navigate to your favorite website.

4 Internet Connection Setup Using Advanced Settings

Use this section to set up your Internet connection manually if you do not see the

ISP Parameters for Internet

Access screen when you run the wizard (see section 4, step 4).

1 Login again. (Follow steps 1 to 5 in section 3.)

2 Select **Goto Advanced setup**. Then, click **Apply**.

3 The **Status** screen appears. Click **Network > WAN** in the navigation panel on the left of the screen.

4 Enter the information exactly as provided by your ISP. Click **Apply**.

5 If you still cannot access the Internet, see **Troubleshooting** and/or contact your Internet Service Provider (ISP) for assistance.

Troubleshooting

1 If you cannot access the web configurator,

- Your computer may be set to use a static IP address in a different subnet from the ZyXEL device. See the appendix in the User's Guide for information on setting up your IP address.

-

If you are using Internet Explorer in Windows XP or Windows Server 2003, make sure you allow pop-up

windows, JavaScripts and Java permissions or set the Internet security level lower than **High** in Internet Explorer (in Internet Explorer, click **Tools > Internet Options > Security > Custom Level...**) . See the appendix in the User's Guide for more information.

2 If you cannot access the Internet when your computer is connected to the **ETHER NET** port, follow these steps.

A) Check the lights on the front panel. If they are different from what is described in section [1](#), make sure the P-660HN(U)-Tx v2 is correctly connected. (See section [1](#).) If the lights are still different, turn off the device, wait a few seconds, and turn it on again.

B) Check you have correctly entered the information your ISP gave you. For example, if your account has a username and password, make sure you type it correctly. In addition, if you are not sure which encapsulation your ISP uses, contact your ISP. If your ISP did not give you Internet connection information, follow the steps in section [2](#).

C) If you are using a new Internet account, contact your ISP to make sure it is active.

D) If you still have problems, see **Troubleshooting** in the User's Guide.

If you cannot access the Internet after you take the steps above, either try the following or contact your ISP:

E) Turn your P-660HN(U)-Tx v2 off and on. Open your Internet browser if it is not already open.

Let the P-660HN(U)-Tx v2 complete the DSL connection test (this may take

several minutes). See section 2 for details.

If the test is successful, check whether you can access the Internet.

If you still cannot access the Internet, contact your Internet Service Provider.

3 If you cannot access the Internet using the wireless network, follow these steps.

A) On a computer in the wireless network, open your browser, and go to

<http://192.168.1.254>. If you see the login screen in

section 3, follow suggestions A-F above. If you do not, go to the next step.

B) On a computer connected to the P-660HN(U)-Tx v2, make sure your P-

660HN(U)-Tx v2 and the computers on your

wireless network are using the same wireless and wireless security settings. See

the chapter on Wireless LAN in the User's Guide for more information.

Viewing Your Product's Certifications

1 Go to www.zyxel.com.

2 Select your product from the drop-down list box on the

ZyXEL home page to go to that product's page.

3 Select the certification you wish to view from this page.

Customer Information Statement

The information informing the user of his/her and the telephone company's right and obligations is outlined on the following pages. This information will be included in the final version of the manual.

Customer Information

- 1** This equipment complies with Part 68 of the FCC rules and the requirements adopted by the ACTA. On the bottom of this equipment is a label that contains, among other information, a product identifier of QWEST P-660HN(U)-Tx.

v2. If requested, this number must be provided to the telephone company.
- 2** If this equipment DL causes harm to the telephone network, the telephone company will notify you in advance that temporary discontinuance of service may be required. But if advance notice is not practical, the telephone company will notify the customer as soon as possible. Also you will be advised of your right to file a complaint with the FCC if you believe it is necessary.
- 3** The telephone company may make changes in its facilities, equipment, operations or procedures that could affect the operation of the equipment. If this happens, the telephone company will provide advance notice in order for you to make necessary modifications to maintain uninterrupted service.

4 If you experience trouble with this equipment, you disconnect it from the network until the problem has been corrected or until you are sure that the equipment is not malfunctioning.

5 Please follow instructions for repairing if any (e.g. battery replacement section); otherwise do not alternate or repair any parts of device except specified.

6 Connection to party line service is subject to state tariffs. Contact the state public utility commission, public service commission or corporation commission for information.

7 If the telephone company requests information on what equipment is connected to their lines, inform them of:

a The ring equivalence number is 02

b) The USOC jack required RJ14, and

c) The FCC Registration Number US:1RODL02BP-660HN(U)-Tx v2

Item (a) and (c) are indicated on the label. The

ring equivalence number (REN) is used to determine how

many devices can be connected to your telephone line. In most areas, the

sum of the RENs of all devices on

any one line should not exceed five (5.0). If too many devices are attached, they may not ring properly.

8 If your home has specially wired alarm equipment connected to the telephone line, ensure the installation of this equipment does not disable alarm equipment; consult your telephone company or a qualified installer.

Certifications

Federal Communications Commission (FCC) Interference Statement

The device complies with Part 15 of FCC rules. Operation is subject to the following two conditions:

- . This device may not cause harmful interference.
- . This device must accept any interference received, including interference that may cause undesired operations.

This device has been tested and found to comply with the limits for a Class B digital device pursuant to Part 15 of the FCC Rules. These limits are designed to provide reasonable protection against harmful interference in a residential installation. This device generates, uses, and can radiate radio frequency energy, and if not installed and used in accordance with the instructions, may cause harmful interference to radio communications. However, there is no guarantee that interference will not occur in a particular installation.

If this device does cause harmful interference to radio/television reception, which can be determined by turning the device off and on, the user is

encouraged to try to correct the interference by one or more of the following measures:

- 1 Reorient or relocate the receiving antenna.
- 2 Increase the separation between the equipment and the receiver.
- 3 Connect the equipment into an outlet on a circuit different from that to which the receiver is connected.
- 4 Consult the dealer or an experienced radio/TV technician for help.



FCC Radiation Exposure Statement

. This transmitter must not be co-located or operating in conjunction with any other antenna or transmitter.

. IEEE 802.11b or 802.11g or 802.11n (20MHz) operation of this product in the U.S.A. is firmware-limited to channels 1 through 11. IEEE 802.11n (40MHz) operation of this product in the U.S.A. is firmware-limited to channels 3 through 9.

. To comply with FCC RF exposure compliance requirements, a separation distance of at least 20 cm must be maintained between the

antenna of this device and all persons.

Safety Warnings

. Do NOT use this product near water, for example, in a wet basement or near a swimming pool.

. Do NOT expose your device to dampness, dust or corrosive liquids.

. Do NOT store things on the device.

. Do NOT install, use, or service this device during a thunderstorm. There is a remote risk of electric shock from lightning.

. Connect ONLY suitable accessories to the device.

. Do NOT open the device or unit. Opening or removing covers can expose you to dangerous high voltage points or other risks. ONLY qualified service personnel should service or disassemble this device. Please contact your vendor for further information.

. Make sure to connect the cables to the correct ports.

. Place connecting cables carefully so that no one will step on them or stumble over them.

. Always disconnect all cables from this device before servicing or disassembling.

. Use ONLY an appropriate power adaptor or cord for your device.

. Connect the power adaptor or cord to the right supply voltage (for

example, 110V AC in North America or 230V AC in Europe).

. Do NOT allow anything to rest on the power adaptor or cord and do NOT place the product where anyone can walk on the power adaptor or cord.

. Do NOT use the device if the power adaptor or cord is damaged as it might cause electrocution.

. If the power adaptor or cord is damaged, remove it from the device and the power source.

. Do NOT attempt to repair the power adaptor or cord. Contact your local vendor to Order a new one.

. Do not use the device outside, and make sure all the connections are indoors. There is a remote risk of electric shock from lightning.

. Do NOT obstruct the device ventilation slots, as insufficient airflow may harm your device.

. Use only No. 26 AWG (American Wire Gauge) or larger telecommunication line cord.

. Antenna Warning! This device meets ETSI and FCC certification requirements when using the included antenna(s). Only use the included antenna(s).

. If you wall mount your device, make sure that no electrical lines, gas or water pipes will be damaged.

Your product is marked with this symbol, which is known as the WEEE mark. WEEE stands for Waste Electronics and Electrical Equipment. It means that used electrical and electronic products should not be mixed with general waste. Used electrical and electronic equipment should be



treated separately

Information to user

CAUTION: changes or modifications not expressly approved by the party responsible for compliance could void the user's authority to operate the equipment.

Service Requirements

In the event of equipment malfunction, all repairs should be performed by your Company or an authorized agent. It is the responsibility of users requiring service to report the need for service to our Company or to one of our authorized agents.

Service can be facilitated through our office at:

ZyXEL Communications Corporation

6, Innovation Rd II, Science-Based Industrial Park, Shin-Chu, Taiwan, R.O.C.

+886-3-578-3942