

ZyXEL

G-162

802.11g Wireless CardBus Card

**Quick Start Guide**

## Important Note

### Federal Communications Commission (FCC) Interference Statement

The 802.11g Wireless LAN Adapter has been tested to the FCC exposure requirements (Specific Absorption Rate).

The equipment complies with FCC RF radiation exposure limits set forth for an uncontrolled environment, under 47 CFR 2.1093 paragraph (d) (2).

This Transmitter must not be co-located or operating in conjunction with any other antenna or transmitter.

Refer to the User's Guide for general FCC statements.

### Procedure to View a Product's Certification(s)

1. Go to [www.zyxel.com](http://www.zyxel.com)
2. Select your product from the drop-down list box on the ZyXEL home page to go to that product's page.
3. Select the certification you wish to view from this page.

## About Your ZyXEL G-162

The ZyXEL G-162 is an IEEE 802.11g compliant wireless LAN PC card that fits into any CardBus slot. With the ZyXEL G-162, you can enjoy the wireless mobility within the coverage area. The IEEE 802.11g technology provides greater range and offers transmission rate at up to 54 Mbps. Your ZyXEL G-162 can transmit at the proprietary transmission rate of **125 Mbps** if you are connecting to the ZyXEL G-162 and G-560 (at the time of writing).

## 1. Installation Requirements

Before installation, make sure you have a computer with the following:

- Pentium II 300MHz or above
- A minimum of 6 MB available hard disk space
- A minimum of 32 MB RAM
- A CD-ROM drive
- A CardBus slot
- Windows 98 SE/Me/2000/XP
- Windows 98 SE users may need the Windows 98 SE CD



**If you install the Funk Odyssey Client software on the computer, uninstall (remove) it.**

## 2. ZyXEL Utility and Hardware Installation

The installation procedures are similar for all supported Windows versions. Windows 2000 screen shots are shown unless otherwise specified.



**DO NOT insert the ZyXEL G-162 at this point.**

1. Insert the support CD into the CD-ROM drive on your computer. The CD automatically runs. Otherwise, locate and double-click **setup.exe**.

## ZyXEL G-162 Quick Start Guide

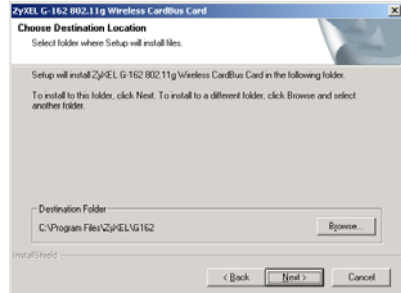
2. Select your language and click **OK**.



3. Click **Install Utility** to start installation.



4. A welcome screen displays. Click **Next**.
5. Click **Next** to accept the default file location or click **Browse** to select an alternate folder.



6. Click **Finish** to restart the computer.

7. Locate an available CardBus slot on the computer.
8. With the pin connectors facing the slot and the LED side facing up, slide the ZyXEL G-162 into the slot. The LEDs turn on if the ZyXEL G-162 is properly inserted.



**Never bend, force or twist the ZyXEL G-162 into the slot.**

After you install the ZyXEL Utility and insert the ZyXEL G-162, an icon appears in the system tray.



**If the ZyXEL Utility icon displays, the ZyXEL G-162 is installed properly. Refer to the *User's Guide* to configure the ZyXEL G-162.**

## LED Display



The following table describes the LEDs on the ZyXEL G-162.

## ZyXEL G-162 Quick Start Guide

LED	COLOR	STATUS	DESCRIPTION
PWR	Green	On	The ZyXEL G-162 is receiving power.
		Off	The ZyXEL G-162 is not receiving power.
LINK	Green	Blinking	The ZyXEL G-162 is receiving or sending data.
		Off	The ZyXEL G-162 is not receiving or sending data.

## Troubleshooting

PROBLEM	CORRECTIVE ACTION
Windows does not auto-detect the ZyXEL G-162.	Make sure the ZyXEL G-162 is inserted into the computer CardBus slot properly and then restart your computer. Check the LEDs on the ZyXEL G-162.
	Perform a hardware scan by clicking <b>Start, Settings, Control Panel</b> and double-clicking <b>Add/Remove Hardware</b> . (Steps may vary depending on the version of Windows). Follow the on-screen instructions to search for the ZyXEL G-162 and install the driver.
	Check for possible hardware conflicts. In Windows, click <b>Start, Settings, Control Panel, System, Hardware</b> and then click <b>Device Manager</b> . Verify the status of the ZyXEL G-162 under <b>Network Adapter</b> . (Steps may vary depending on the version of Windows).
	Install the ZyXEL G-162 in another computer. If the error persists, you may have a hardware problem. In this case, you should contact your local vendor.



Certifications. For more information about your devices Declaration of Conformity (DOC) please refer to [www.zyxel.com](http://www.zyxel.com)

## **Federal Communication Commission Interference Statement**

This equipment has been tested and found to comply with the limits for a Class B digital device, pursuant to Part 15 of the FCC Rules. These limits are designed to provide reasonable protection against harmful interference in a residential installation. This equipment generates, uses and can radiate radio frequency energy and, if not installed and used in accordance with the instructions, may cause harmful interference to radio communications. However, there is no guarantee that interference will not occur in a particular installation. If this equipment does cause harmful interference to radio or television reception, which can be determined by turning the equipment off and on, the user is encouraged to try to correct the interference by one of the following measures:

- Reorient or relocate the receiving antenna.
- Increase the separation between the equipment and receiver.
- Connect the equipment into an outlet on a circuit different from that to which the receiver is connected.
- Consult the dealer or an experienced radio/TV technician for help.

This device complies with Part 15 of the FCC Rules. Operation is subject to the following two conditions: (1) This device may not cause harmful interference, and (2) this device must accept any interference received, including interference that may cause undesired operation. FCC Caution: Any changes or modifications not expressly approved by the party responsible for compliance could void the user's authority to operate this equipment.

### **IMPORTANT NOTE:**

#### **FCC Radiation Exposure Statement:**

This equipment complies with FCC radiation exposure limits set forth for an uncontrolled environment. End users must follow the specific operating instructions for satisfying RF exposure compliance.

This transmitter must not be co-located or operating in conjunction with any other antenna or transmitter.

The equipment version marketed in USA is restricted to usage of the channels 1-11 only.

This equipment has been SAR-evaluated for use in laptops (notebooks) with side.