

ZyAIR B-120

Wireless LAN PC Card

Quick Installation Guide

Version 1.0.0.b5

April 2003



About Your ZyAIR

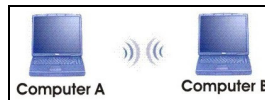
The ZyAIR is an IEEE 802.11b compliant wireless LAN PC card that fits into any type II PCMCIA slot. Its maximum 11 Mbps data rate, which gives Ethernet equivalent speed, is ideal in the corporate or home environment. Users enjoy the wireless mobility within the coverage area. What's more, the ZyAIR supports IEEE 802.1x authentication methods for enhanced security that protects the network from intruders.

Ad-Hoc Application

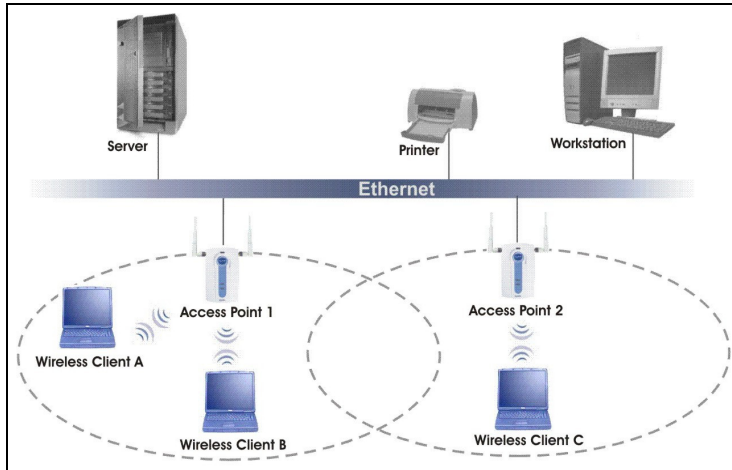
An ad-hoc network consists of two or more computers communicating with one another through the wireless network. No access points (APs) or existing wired networks are needed.

Infrastructure Application

When wireless clients wish to access and share resources on the wired network, they should use infrastructure mode. Wireless clients may move or roam from one coverage area to another seamlessly without network interruption.



Ad-hoc Network Example



Infrastructure Network Example

Installation Overview

1. Installation Requirements
2. Hardware Installation
3. Driver Installation
4. ZyAIR Wireless LAN Utility Installation
5. Disable Windows XP Wireless Configuration Tool
6. Accessing the ZyAIR Utility

1

Installation Requirements

Before installation, make sure you have the following requirements.

- At least 32 MB RAM (64 MB recommended)
- A minimum of 20 MB available hard disk space
- A CD-ROM drive
- A PCMCIA type II slot
- Windows 98 SE/ME/2000/XP
- Windows 98 SE users may need the Windows 98/98 SE CD

2

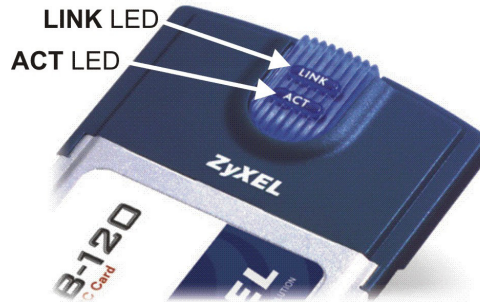
Hardware Installation

Follow the steps below to install the ZyAIR in your computer.

1. Save your work and close all applications.
2. Locate an available type II PCMCIA slot on the computer.
3. With the pin connector facing the slot and the LED side facing up, slide the ZyAIR into the slot. The LEDs turn on if the ZyAIR is properly inserted.

Never bend, force or twist the ZyAIR into the PCMCIA slot.





LED Display

LED	COLOR	STATUS	DESCRIPTION
ACT	Blue	Blinking	The ZyAIR is receiving or sending data.
		Off	The ZyAIR is not receiving or sending data.
LINK	Blue	On	The ZyAIR has a connection to a wireless LAN.
		Blinking	The ZyAIR is connecting to a wireless LAN.
		Off	The ZyAIR is not connected to a wireless LAN or not receiving power.

3 Driver Installation

Follow the steps for the appropriate version of Windows to install the ZyAIR driver. After the driver is installed successfully proceed to install the ZyAIR Wireless Utility.

Windows 98 SE

1. When Windows automatically detects the ZyAIR, click **Next**.
2. Select **Search for the best driver for your device. (Recommended)**, and click **Next**.
3. Insert the Installation CD into your CD-ROM drive. Select **CD-ROM drive** and click **Next**.



- When prompted, insert the Windows 98 SE CD and click **OK**. Then specify the location of the Windows 98 SE installation files and click **OK**.



- When **Add New Hardware Wizard** finds the driver file, click **Next**.
- Click **Finish** and restart the computer.



Windows Me

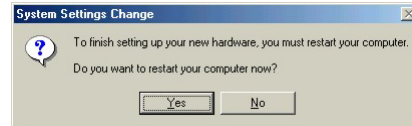
- Windows automatically detects the ZyAIR. Select **Specify the location of the driver (Advanced)**, then click **Next**.



2. Insert the Installation CD into your CD-ROM drive. Select **Search for the best drive for your device** then select only **Removable Media (Floppy, CD-ROM ...)** and click **Next**.



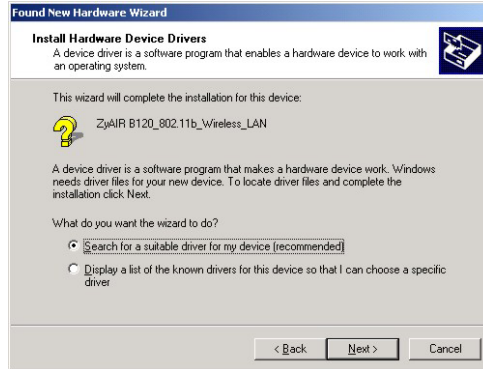
3. When the **Add New Hardware Wizard** finds the driver, click **Next**.
4. Click **Finish** and restart the computer when prompted.



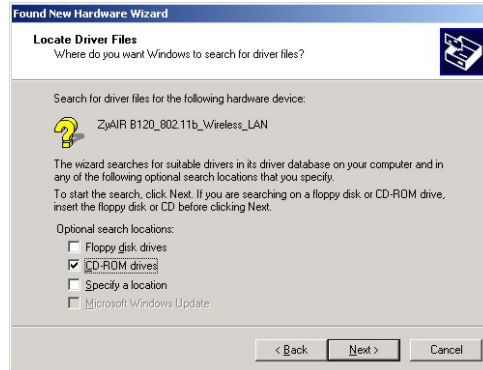
Windows 2000

1. When Windows automatically detects the ZyAIR, click **Next**.

2. Insert the Installation CD into your CD-ROM drive. Select **Search for a suitable driver for my device (recommended)** and click **Next**.



3. Select **CD-ROM drive** and click **Next**.



4. When the **Add New Hardware Wizard** finds the driver, click **Next**.

5. If a **Digital Signature Not Found** window displays, click **Yes** to continue.



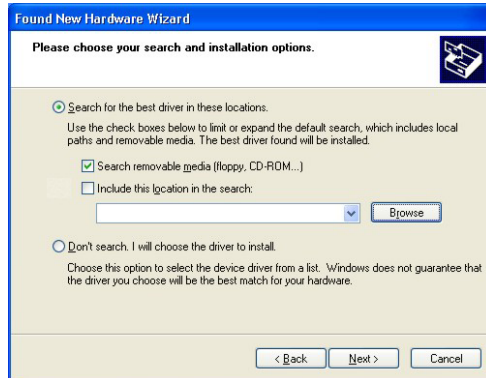
6. Click **Finish**. A Welcome window displays next.

Windows XP

1. Windows automatically detects the ZyAIR. Select **Install from a list or specific location (Advanced)**, then click **Next**.



2. Insert the Installation CD into your CD-ROM drive. Select **Search for the best drive in these locations** then select only **Search removable media. (Floppy, CD-ROM ...)** and click **Next**.



3. If the following warning window displays, click **Continue Anyway**.

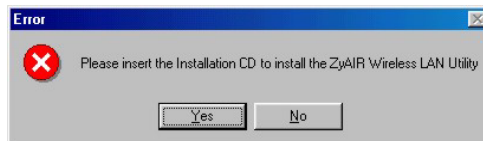


4. Click **Finish**. A Welcome window displays next.

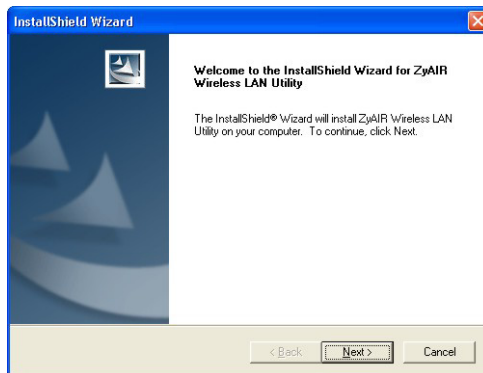
4 ZyAIR Wireless LAN Utility Installation

The installation procedures are similar for all support Windows versions. Windows XP screen shots are shown unless otherwise specified.

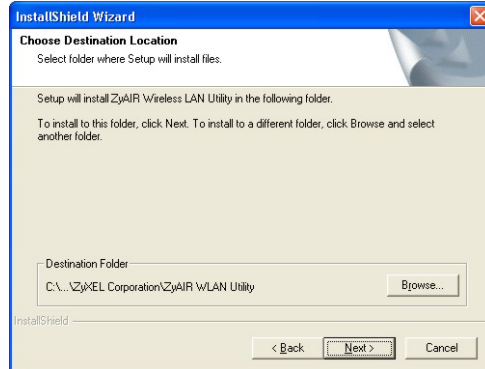
1. For Windows 98 SE/Me:
If the Installation CD is not already in the CD-ROM drive after the computer restarts, a warning screen displays. Insert the Installation CD and click **Yes**.



After you have successfully installed the driver, a Welcome screen displays. Click **Next**.



2. Click **Next** to accept the default file location or click **Browse** to select an alternate folder.



3. Click **Finish** to restart the computer and complete the installation process.



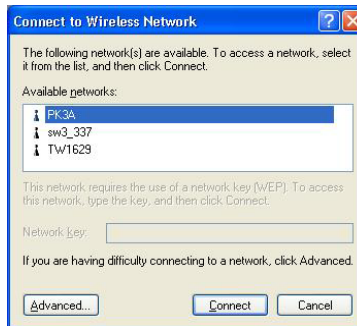
5 Disable Windows XP Wireless Configuration Tool

Windows XP includes a configuration tool for wireless devices.

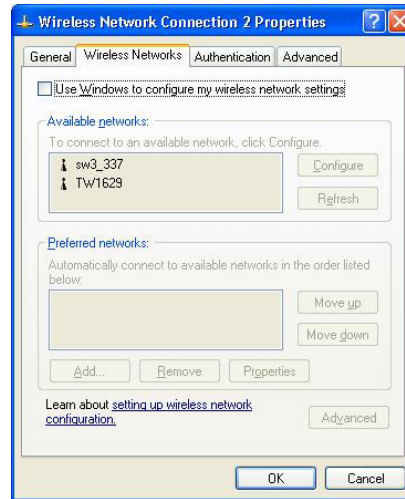
DO NOT use the Windows XP configuration tool and the ZyAIR Utility at the same time. Always use the ZyXEL Utility to configure the ZyAIR.

Follow the steps below to disable the Windows XP configuration tool.

1. Double-click the network icon in the system tray.
2. When a **Connect to Wireless Network** window displays, click **Advanced**.



3. In the **Wireless Network Connection Properties** window, make sure the **Use Windows to configure my wireless network settings** check box is *not* selected. Click **OK**.



6 Accessing the ZyAIR Utility

1. After the ZyAIR Utility is installed, an icon appears in the system tray.



If the ZyAIR Utility icon displays, the ZyAIR is installed properly.

2. Double-click on the **ZyAIR Wireless LAN Utility** icon in the system tray to open the ZyAIR Wireless LAN Utility program.

Refer to the *ZyAIR User's Guide* to configure the ZyAIR.

Removing the ZyAIR

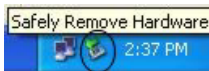
To avoid data lost, DO NOT remove the ZyAIR while data transmission is taking place.

After you exit from the ZyAIR Utility program, you may remove the ZyAIR from your computer. Most PCMCIA slots on the computer have an ejecting lever or button for ejecting the PCMCIA cards from the slots. Consult your computer manuals.

You do not have to turn off the computer before removing the ZyAIR. The ZyAIR is hot swappable – you can insert or remove the ZyAIR while the computer is turned on. However, it is recommended that you stop the card first.

Follow the steps below to disable the ZyAIR in Windows XP. Steps may vary depending on the version of Windows.

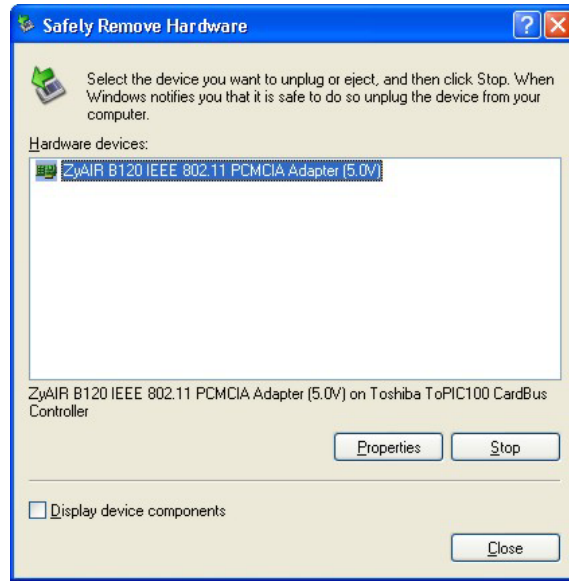
1. Double-click the wireless device icon in the system tray.



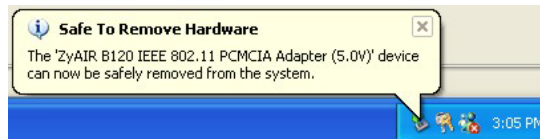
2. When a **Safely Remove Hardware** window displays, select the ZyAIR device in the **Hardware devices** list and click **Stop**.



3. Click **OK** in the **Stop a Hardware device** window to stop the ZyAIR.



4. After the following notice message displays in the system tray, you can safely remove the ZyAIR from your computer.



Troubleshooting

PROBLEM	CORRECTIVE ACTION
Windows does not auto-detect the ZyAIR.	Make sure the ZyAIR is inserted into the computer PCMCIA slot properly and then restart your computer. Check the LEDs on the ZyAIR.
	Perform a hardware scan by clicking Start, Settings, Control Panel and double-clicking Add/Remove Hardware . (Steps may vary depending on the version of Windows). Follow the on-screen instructions to search for the ZyAIR and install the driver.
	Check for possible hardware conflicts. In Windows, click Start, Settings, Control Panel, System, Hardware and then click Device Manager . Verify the status of the ZyAIR under Network Adapter . (Steps may vary depending on the version of Windows).
	Install the ZyAIR in another computer. If the error persists, you may have a hardware problem. In this case, you should contact your local vendor.
Cannot start the ZyAIR Wireless LAN Utility.	Make sure the ZyAIR is properly inserted and the LINK LED blinks.
	Check for possible hardware conflicts. In Windows, click Start, Settings, Control Panel, System, Hardware and then click Device Manager . Verify the status of the modem under Network Adapter . (Steps may vary depending on the version of Windows).

PROBLEM	CORRECTIVE ACTION
	Install the ZyAIR in another computer. If the error persists, you may have a hardware problem. In this case, you should contact your local vendor.
The ZyAIR Wireless LAN Utility displays only three tabs.	When the ZyAIR Wireless LAN Utility displays only three tabs, you are using the Windows XP wireless configuration tool at the same time. Refer to the <i>Disable Windows XP Wireless Configuration Tool</i> section to disable the Windows XP wireless configuration tool.