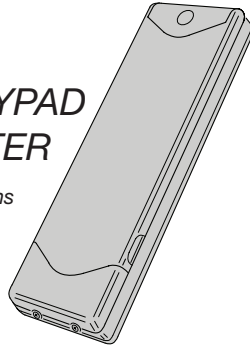




CSKPL

DIGITAL KEYPAD TRANSMITTER

Installation Instructions



www.mightymule.com

DESCRIPTION

This Digital Keypad is designed for use with automatic garage door operators. The radio format provides unparalleled security with more than a million different codes.

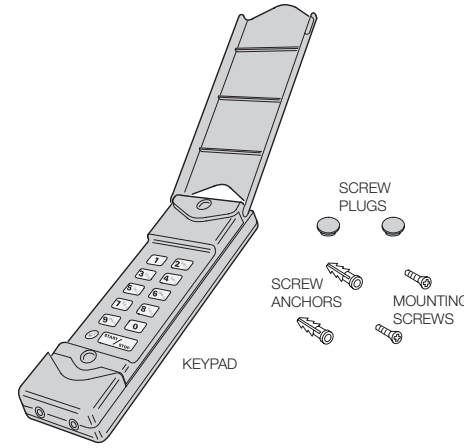
To activate the door operator, the user enters their unique 1 to 6 digit long code on the unit's keypad and presses the **START/STOP** button. For up to 30 seconds after the last activation, the keypad can be re-triggered by simply pressing the **START/STOP** button again. This allows the user to stop or reverse the opener quickly, without having to re-enter their code.

The keypad has built-in lighting for use at night or in dark areas. The clear silicone keys are backlit with a pleasing blue glow. By pressing the **START/STOP** button first, before entering their code, the user can light up the keypad. Pressing the **START/STOP** button twice at any time will light up the keypad.

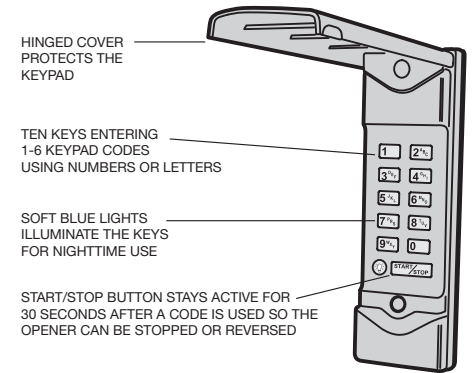
The keypad lockout timer will disable the keypad after 10 activations. The keypad must remain idle for 30 seconds before new attempts.

The garage door operator contains a built-in receiver that is programmed by sending a signal from the user's transmitters. This stores the transmitter's code into the receiver's memory. The receiver will retain its memory even without power and will only activate from these "memorized" transmitters. Each keypad code can be considered a different transmitter.

KEYPAD COMPONENTS



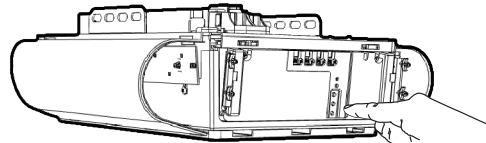
KEYPAD FEATURES



NOTE: FOR SECURITY, THE KEYPAD WILL SHUTDOWN AFTER 10 CODE ENTRIES UNTIL IT IS IDLE FOR 30 SECONDS

PROGRAMMING OPERATOR

ADDING A KEYPAD CODE



- 1 PRESS THE OPERATOR'S LEARN BUTTON FOR 1 SECOND AND RELEASE. THE OPERATOR SHOULD BEEP AND THE LIGHT SHOULD BLINK ONCE. THE RED LED WILL REMAIN LIT (LEARN REMOTE MODE).



- 2 WHILE THE RED LED IS ON, ENTER A 1-6 DIGIT KEYPAD CODE THEN PRESS AND HOLD THE KEYPAD'S START/STOP KEY UNTIL THE OPERATOR BEEPS AND THE LIGHT BLINKS ONCE.

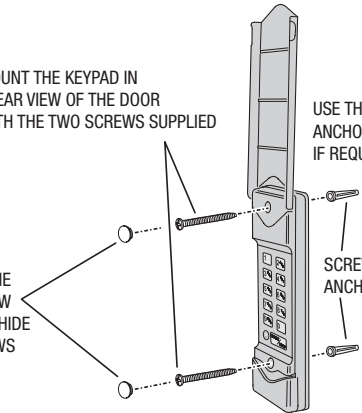
- 3 REPEAT STEPS 1 & 2 FOR ANY ADDITIONAL KEYPAD CODES

WALL MOUNTING

MOUNT THE KEYPAD IN CLEAR VIEW OF THE DOOR WITH THE TWO SCREWS SUPPLIED

USE THE SCREWS ANCHORS SUPPLIED IF REQUIRED

PUSH IN THE TWO SCREW COVER TO HIDE THE SCREWS



KEYPAD OPERATION

DAYTIME OPERATION

- 1 ENTER THE KEYPAD CODE
 - 2 PRESS START/STOP
- 1-6 DIGIT KEYPAD CODE THAT WAS ENTERED INTO OPENER

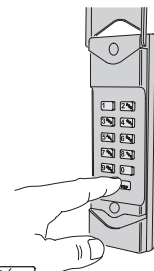
NIGHTTIME OPERATION

- 1 PRESS START/STOP (LIGHTS KEYPAD)
 - 2 ENTER THE KEYPAD CODE
 - 3 PRESS START/STOP
- 1-6 DIGIT KEYPAD CODE THAT WAS ENTERED INTO OPENER

LIGHT OPERATION

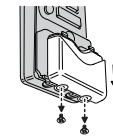
- 1 PRESS THE LIGHT (LAMP) BUTTON TO TURN THE OPERATOR'S LIGHT ON/OFF (KEYPAD MUST HAVE AT LEAST ONE CODE PROGRAMMED INTO THE OPERATOR)

NOTE: TO STOP OR REVERSE THE OPERATOR, THE START/STOP BUTTON CAN BE PRESSED AGAIN FOR UP TO 30 SECONDS WITHOUT RE-ENTERING THE CODE.



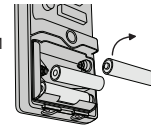
CHANGING BATTERIES

- 1 REMOVE THE TWO SCREWS AND SLIDE THE BATTERY COVER OFF

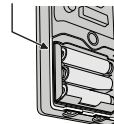


- 2 REMOVE THE LOW VOLTAGE BATTERIES AND DISPOSE OF THEM PROPERLY

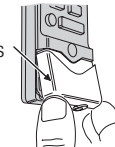
INSTALL 3 FRESH AAA BATTERIES



- 3 BE SURE THE SILICONE GASKET IS IN PLACE



- 4 REPLACE THE BATTERY COVER AND RE-INSTALL THE TWO SCREWS



LIMITED WARRANTY

This product is warranted to the original consumer against defects in material and workmanship for the periods mentioned above. GTO Access Systems will repair, or at its option, replace, any device that it finds requires service under this warranty. This warranty does not apply to damage to the product from negligence, abuse, abnormal usage, misuse, accidents, normal wear or tear or due to failure to follow Seller's instructions, or arising from improper installation, storage or maintenance. In no event will GTO Access Systems be responsible for incidental, compensatory, punitive, consequential, indirect, special or other damages. The remedies provided by this warranty are exclusive. Some states do not allow the exclusion or limitation of incidental and consequential damages, so the above limitation or exclusion may not apply to you. Any warranties implied by law are limited to the time periods set forth above. Some states do not allow limitations on how long an implied warranty lasts, so the above limitation may not apply to you. This warranty gives you specific legal rights, and you may also have other rights which vary from state to state.

For warranty service, contact GTO Access Systems at 800-543-1236. In order to be protected by this warranty, save your proof of purchase should repair be required.

IMPORTANT!

- Radio controls provide a reliable communications link and fill an important need in portable wireless signaling. However, there are some limitations which must be observed.
- For U.S. installations only: The radios are required to comply with FCC Rules and Regulations as Part 15 devices. As such, they have limited transmitter power and therefore limited range.
- A receiver cannot respond to more than one transmitted signal at a time and may be blocked by radio signals that occur on or near their operating frequencies.
- Changes or modifications to the device may void FCC compliance.
- Infrequently used radio links should be tested regularly to protect against undetected interference or fault.
- A general knowledge of radio and its vagaries should be gained prior to acting as a wholesale distributor or dealer, and these facts should be communicated to the ultimate users.

FCC STATEMENT

This device complies with part 15 of the FCC Rules. Operation is subject to the following two conditions: (1) This device may not cause harmful interference, and (2) this device must accept any interference received, including interference that may cause undesired operation.

NOTE: This equipment has been tested and found to comply with the limits for a Class B digital device, pursuant to part 15 of the FCC Rules. These limits are designed to provide reasonable protection against harmful interference in a residential installation. This equipment generates, uses and can radiate radio frequency energy and, if not installed and used in accordance with the instructions, may cause harmful interference to radio communications. However, there is no guarantee that interference will not occur in a particular installation. If this equipment does cause harmful interference to radio or television reception, which can be determined by turning the equipment off and on, the user is encouraged to try to correct the interference by one or more of the following measures:

- Reorient or relocate the receiving antenna.
- Increase the separation between the equipment and receiver.
- Connect the equipment into an outlet on a circuit different from that to which the receiver is connected.
- Consult the dealer or an experienced radio/TV technician for help.

CAUTION!

Any changes or modifications not expressly approved by the party responsible for compliance could void the user's authority to operate the equipment.