



America

---

**Choose certainty.  
Add value.**

## Report On

Radio Testing of  
Nortek Security & Control LLC  
MMT103

FCC Part 15 Subpart C §15.231  
IC RSS-210, Issue 9, August 2016

Report No. TP72138170.100

May 2018



**REPORT ON** Radio Testing of the  
Nortek Security & Control LLC  
MMT103

**TEST REPORT NUMBER** TP72138170.100

**REPORT DATE** 03. May 2018

**PREPARED FOR** Nortek Security & Control LLC  
1950 Camino Vida Roble  
Suite 150  
Carlsbad, CA 92008

**CONTACT PERSON** Brandon Taylor  
[BTaylor@gtoaccess.com](mailto:BTaylor@gtoaccess.com)

**PREPARED BY**

A handwritten signature in black ink that reads 'Steven E. Hoke'.

---

Steven Hoke  
Title: Senior EMC Engineer

**APPROVED BY**

A handwritten signature in blue ink that reads 'Pete Walsh'.

---

Pete Walsh  
Authorized Signatory  
Title: Tampa Service Line Manager

**DATED** 03. May 2018

---



**Revision History**

TP72138170.100 Nortek Security & Control LLC MMT103					
DATE	OLD REVISION	NEW REVISION	REASON	PAGES AFFECTED	APPROVED BY
03. May 2018	Initial Release				P. Walsh



## TABLE OF CONTENTS

Section	Page No
<b>1</b>	<b>REPORT SUMMARY ..... 5</b>
1.1	Introduction ..... 6
1.2	Brief Summary of Results ..... 7
1.3	Product Information ..... 8
1.4	EUT Test Configuration ..... 10
1.5	Deviations from the Standard ..... 11
1.6	Modification Record ..... 11
1.7	Test Methodology ..... 11
<b>2</b>	<b>TEST DETAILS ..... 13</b>
2.1	Bandwidth Requirement ..... 14
2.2	Field Strength of Emissions ..... 17
2.3	Transmission Verification For Transmitter Activated Automatically ..... 22
<b>3</b>	<b>TEST EQUIPMENT USED ..... 24</b>
3.1	Test Equipment Used ..... 25
<b>4</b>	<b>DIAGRAM OF TEST SETUP ..... 27</b>
4.1	Radiated Emission Test Setup (Below 1 GHz)..... 28
4.2	Radiated Emission Test Setup (Above 1 GHz) ..... 29
<b>5</b>	<b>ACCREDITATION, DISCLAIMERS AND COPYRIGHT ..... 30</b>
5.1	Accreditation, Disclaimers and Copyright..... 31



## **SECTION 1**

### **REPORT SUMMARY**

Radio Testing of  
Nortek Security & Control LLC  
MMT103



## 1.1 INTRODUCTION

The information contained in this report is intended to show verification of the Nortek Security & Control LLC Model MMT103 to the requirements of FCC Part 15 Subpart C §15.231 and IC RSS-210, Issue 9, August 2016.

Objective	To perform Radio Testing to determine the Equipment Under Test's (EUT's) compliance with the Test Specification, for the series of tests carried out.
Manufacturer	Nortek Security & Control LLC
Model Number(s)	MMT103
FCC ID Number	I6H-MMT103
IC Number	21449-MMT103
Serial Number(s)	None
Number of Samples Tested	1
Test Specification/Issue/Date	<ul style="list-style-type: none"><li>• FCC Part 15 Subpart C §15.231</li><li>• IC RSS-210, Issue 9, August 2016 (amendment 11. 2017)</li></ul>
Start of Test	09. April 2018
Finish of Test	18. April 2018
Name of Engineer(s)	David Foerstner
Related Document(s)	None. Supporting documents for EUT certification are separate exhibits.



## 1.2 BRIEF SUMMARY OF RESULTS

A brief summary of the tests carried out in accordance with FCC Part 15 Subpart C §15.231 with cross-reference to the corresponding ISED RSS standard shown below.

Section	FCC Part 15	§15.231 Spec Clause	RSS	Test Description	Result	Comments/ Base Standard
-	§15.207 (a)		RSS-Gen 8.8	Conducted Emissions	N/A <sup>1</sup>	
-		§15.231(a)(3)	RSS-210 A1.1 (c)	Polling or Supervision Transmissions, Including Data, To Determine System Integrity Of Transmitters Used In Security Or Safety Applications	Compliant	
2.1		§15.231(c)	RSS-210 A1.3	Bandwidth Requirement	Compliant	
2.2		§15.231(b)	RSS-210 A1.2	Field Strength of Emissions	Compliant	
-		§15.231(d)	-	Frequency Tolerance	N/A <sup>3</sup>	
-		§15.231(e)	RSS-210 A1.4	Field Strength of Emissions	N/A <sup>2</sup>	
2.3		§15.231(a)(2)	RSS-210 A1.1 (b)	Transmission Verification for Transmitter Activated Automatically	Compliant	

N/A<sup>1</sup> Not applicable. EUT is battery powered.

N/A<sup>2</sup> Not applicable. Requirements of 15.231(b) were used.

N/A<sup>3</sup> Not applicable. EUT does not transmit in the 40.60 – 40.70 MHz band.

**1.3 PRODUCT INFORMATION**

**1.3.1 Technical Description**

The Equipment Under Test (EUT) is a Nortek Security & Control LLC, Model MMT103 as shown in the photograph below. It is a 3-button transmitter operating at 317.9 MHz. The schematic below depicts the electrical changes made to the Certified device.

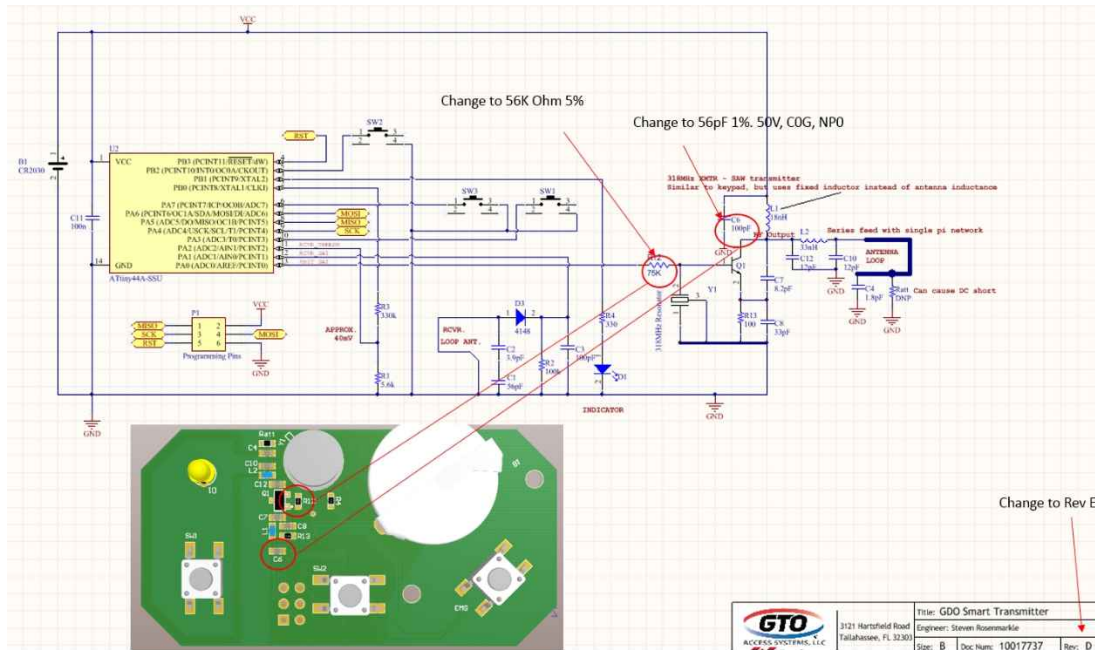


Photo 1.3.1 – Top View





**1.3.2 EUT General Description**

EUT Description	3 Button Transmitter
Model Number(s)	MMT103
Power Source	CR2032 Battery
EUT Field Strength	74.0 dB $\mu$ V/m @ 3meters
Frequency Range	317.9 MHz
Modulation	OOK
Antenna Type	Integral Antenna



#### 1.4 EUT TEST CONFIGURATION

##### 1.4.1 Test Configuration Description

Test Configuration	Description
A	EUT in test mode transmitting CW signal. Configuration used for radiated emissions measurements.
B	EUT in operational mode. Configuration used for duty cycle factor verification.

##### 1.4.2 EUT Exercise Software

No special software was used.

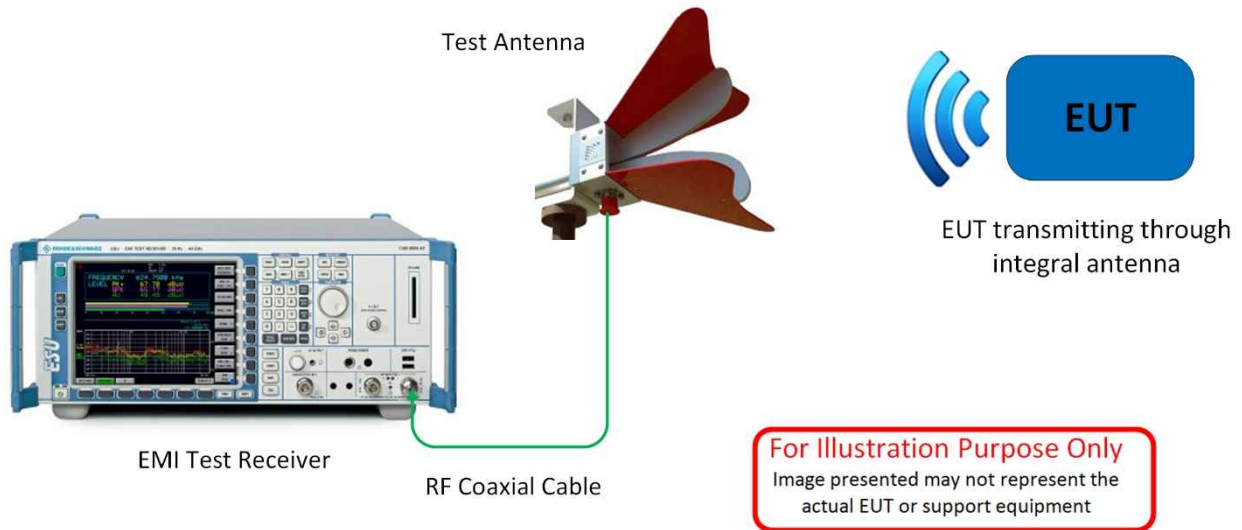
##### 1.4.3 Support Equipment and I/O cables

Manufacturer	Equipment/Cable	Description

##### 1.4.4 Worst Case Configuration

For radiated measurements, the EUT was investigated in all orthogonal directions. Testing was completed with the EUT in a horizontal position, which was the worst case.

**1.4.5 Simplified Test Configuration Diagrams**



**1.5 DEVIATIONS FROM THE STANDARD**

All deviations made during testing from the applicable test standards or test plan are detailed under Section 1.2 of this test report.

**1.6 MODIFICATION RECORD**

Description of Modification	Modification Fitted By	Date Modification Fitted
Serial Number N/A		
N/A	-	-

The table above details modifications made to the EUT during the test programme. The modifications incorporated during each test (if relevant) are recorded on the appropriate test pages.

**1.7 TEST METHODOLOGY**

All measurements contained in this report were conducted with ANSI C63.10-2013: American National Standard of Procedures for Compliance Testing of Unlicensed Wireless Devices.

For conducted and radiated emissions, the equipment under test (EUT) was configured to measure its highest possible emission level. This level was based on the maximized cable configuration from exploratory testing per ANSI C63.10-2013. The test modes were adapted per the operating Instructions provided by the manufacturer/client.



## **1.8 TEST FACILITY LOCATION**

### **1.8.1 TÜV SÜD America Inc. (Tampa)**

5610 W. Sligh Ave., Suite 100 Tampa, FL 33634 Phone: 813 284 2715 FAX: 813-413 3813

## **1.9 TEST FACILITY REGISTRATION**

### **1.9.1 FCC – Registration No**

The TUV SUD America Inc. (Tampa), test facility has been registered with the Federal Communication Commission as an ISO/IEC 17025 accredited test laboratory and assigned the designation number US1063.

### **1.9.2 Innovation, Science and Economic Development Canada Registration**

The TUV SUD America Inc. (Tampa), test facility has been registered with Innovation, Science and Economic Development Canada and assigned the site number 2087A-2.



## **SECTION 2**

### **TEST DETAILS**

Radio Testing of  
Nortek Security & Control LLC  
MMT103



## **2.1 BANDWIDTH REQUIREMENT**

### **2.1.1 Specification Reference**

Part 15 Subpart C §15.231(c), RSS-210 Issue A1.3

### **2.1.2 Standard Applicable**

(c) The bandwidth of the emission shall be no wider than 0.25% of the center frequency for devices operating above 70 MHz and below 900 MHz. For devices operating above 900 MHz, the emission shall be no wider than 0.5% of the center frequency. Bandwidth is determined at the points 20 dB down from the modulated carrier.

### **2.1.3 Equipment Under Test and Modification State**

Serial No: None/Test Configuration B

### **2.1.4 Date of Test/Initial of test personnel who performed the test**

18. April 2018 / DF

### **2.1.5 Test Equipment Used**

The major items of test equipment used for the above tests are identified in Section 3.1.

### **2.1.6 Environmental Conditions**

Ambient Temperature	22 °C
Relative Humidity	42 %

### **2.1.7 Additional Observations**

- This is a radiated test.
- Span is set to encompass the whole emission
- RBW is 1% of the span while VBW is greater than 3X RBW.
- Sweep is auto.
- Detector is peak.
- Max hold function activated.



2.1.8 Test Results

Transmitter Frequency (MHz)	Modulation	0.25% of the center frequency requirement	Measured 20dB Bandwidth (MHz)	99% Bandwidth (MHz)
317.9	OOK	<794.8 kHz	163.0 kHz	318 kHz

2.1.9 Test Results Plots

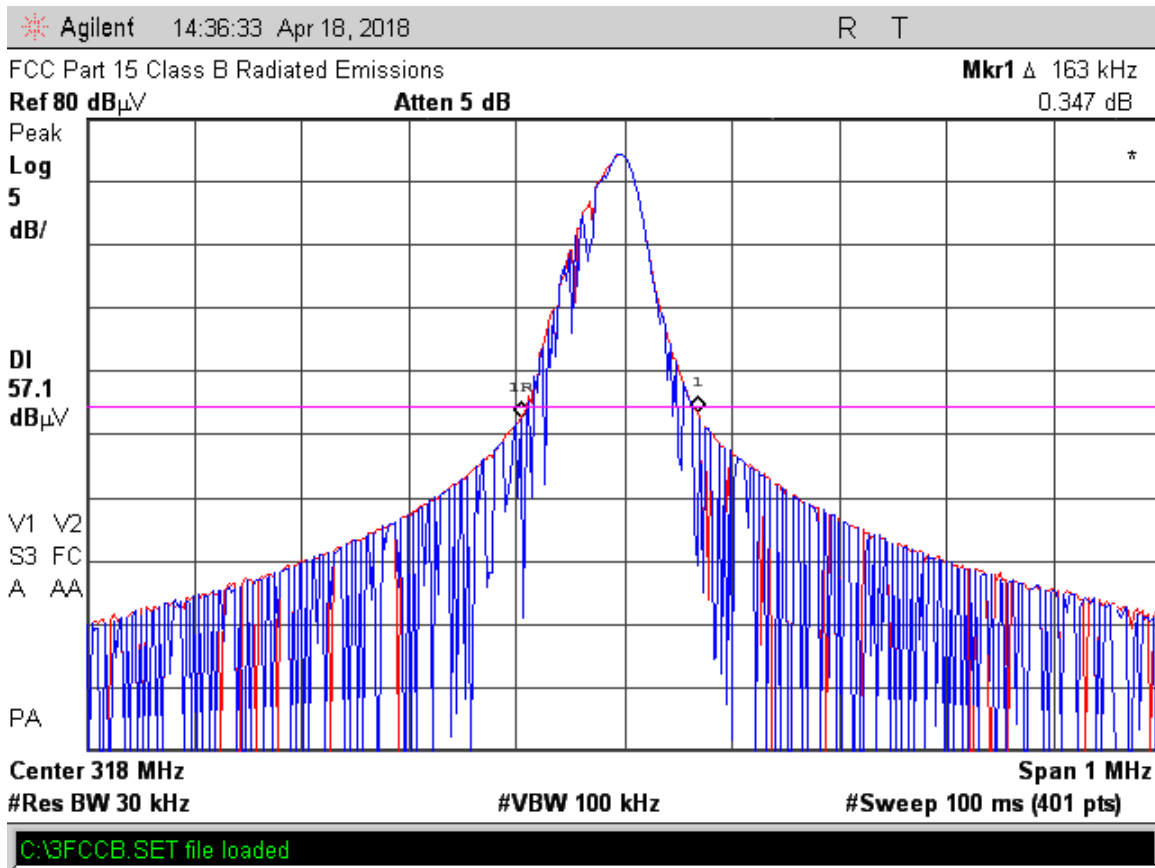


Figure 2.1.9-1 - 20 dB Occupied Bandwidth

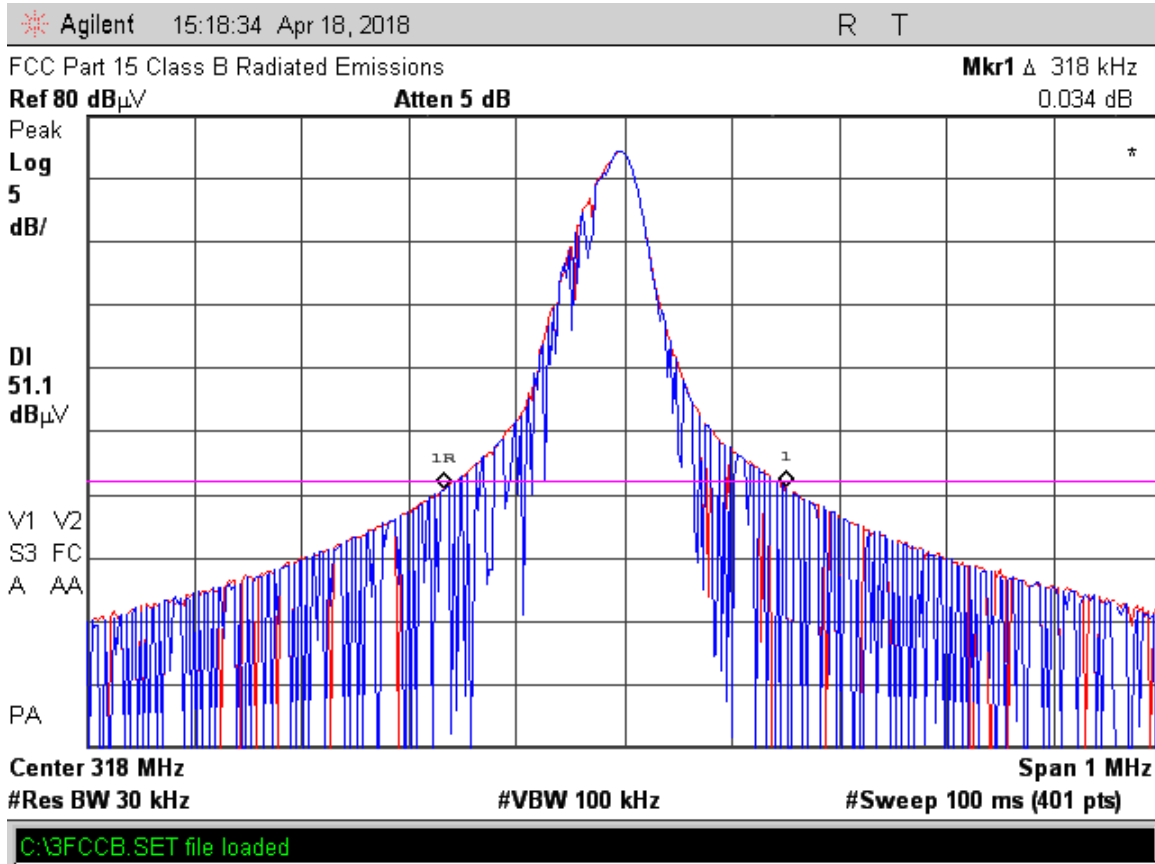


Figure 2.1.9-2 - 99% Occupied Bandwidth





**2.2 FIELD STRENGTH OF EMISSIONS**

**2.2.1 Specification Reference**

Part 15 Subpart C §15.231(b), RSS-210 Issue 9 A1.4

**2.2.2 Standard Applicable**

(b) In addition to the provisions of §15.205, the field strength of emissions from intentional radiators operated under this section shall not exceed the following:

Fundamental frequency (MHz)	Field strength of fundamental (microvolts/meter)	Field strength of spurious emissions (microvolts/meter)
40.66-40.70	2,250	225
70-130	1,250	125
130-174	<sup>1</sup> 1,250 – 3,750	<sup>1</sup> 125 - 375
174-260	3,750	375
260-470	<sup>1</sup> 3,750 – 12,500	<sup>1</sup> 375 – 1,250
Above 470	1,250	500

<sup>1</sup>Linear Interpolations

**2.2.3 Equipment Under Test and Modification State**

Serial No: None / Test Configuration A and B

**2.2.4 Date of Test/Initial of test personnel who performed the test**

09. April 2018 / DF

**2.2.5 Test Equipment Used**

The major items of test equipment used for the above tests are identified in Section 3.1.

**2.2.6 Environmental Conditions/ Test Location**

Test performed at TÜV SÜD America Inc. Tampa facility.

Ambient Temperature      23.9-24.3°C  
 Relative Humidity          44.1-48.6%

**2.2.7 Additional Observations**

- This is a radiated test. The spectrum was searched from 30MHz to the 10th harmonic, 3.2 GHz.
- There were no emissions found that did not comply with the restricted bands defined in FCC Part 15 Subpart C, 15.205.



- Measurement was done using EMC32 automated software. Reported level is the actual level with all the correction factors factored in. Correction Factor column is for informational purposes only. See Section 2.5.8 for sample computation.

**2.2.8 Sample Computation (Radiated Emission)**

Measuring equipment raw measurement (dB $\mu$ V) @ 30 MHz		20.0
Correction Factor (dB)	Cable 2	0.24
	TEM00011 (antenna)	18.70
<b>Reported QuasiPeak Final Measurement (dB<math>\mu</math>V/m) @ 30MHz</b>		<b>38.94</b>

**2.2.9 Test Results**

See attached plots.

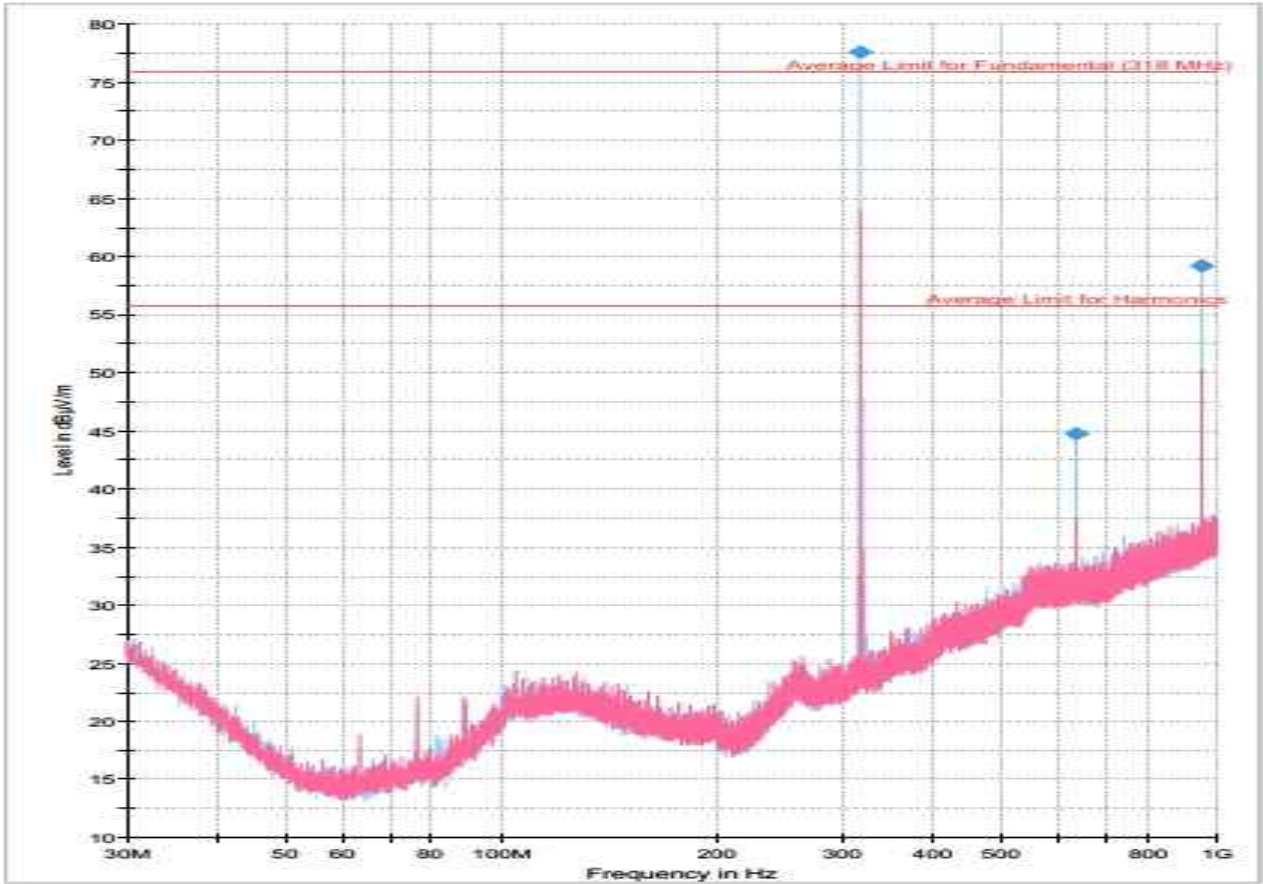


Figure 2.2.9-1 – Radiated Emissions Plot 30 MHz – 1 GHz

Table 2.2.9-1 – Peak & Average Data for Intentional and Spurious Emissions

Frequency (MHz)	Peak (dBµV/m)	Height (cm)	Pol.	Azimuth (deg)	Duty Cycle Corrected (dBµV/m)	Margin (dB)	Average Limit (dBµV/m)
318.000000	77.6	100.0	H	0.0	*74.0	1.8	75.8
636.000000	44.8	140.0	H	327.0	*41.2	14.6	55.8
954.000000	59.2	100.0	H	131.0	*54.6	1.2	55.8

Table 2.2.9-2 – (Original data on file with FCC)

Frequency (MHz)	Peak (dBµV/m)	Height (cm)	Pol.	Azimuth (deg)	Duty Cycle Corrected (dBµV/m)	Margin (dB)	Average Limit (dBµV/m)
318.000000	78.5	100.0	H	0.0	*74.9	0.9	75.8
636.000000	48.4	140.0	H	327.0	*44.8	11.0	55.8
954.000000	55.5	100.0	H	131.0	*51.9	3.9	55.8

\*Duty Cycle Correction is 3.6 dB.



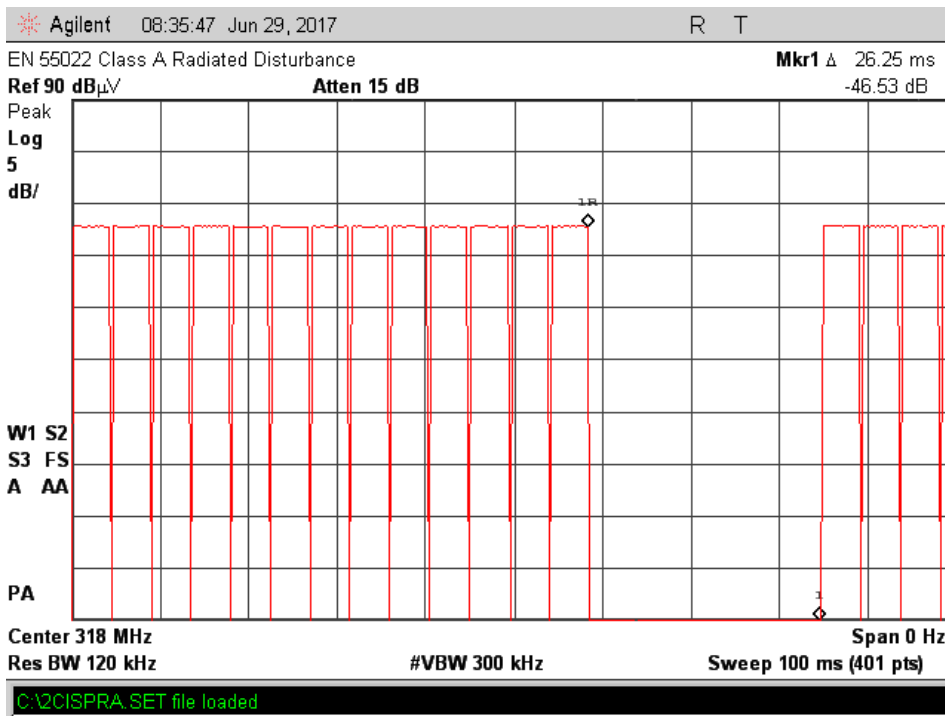
### INTENTIONAL RADIATOR LIMIT CALCULATION

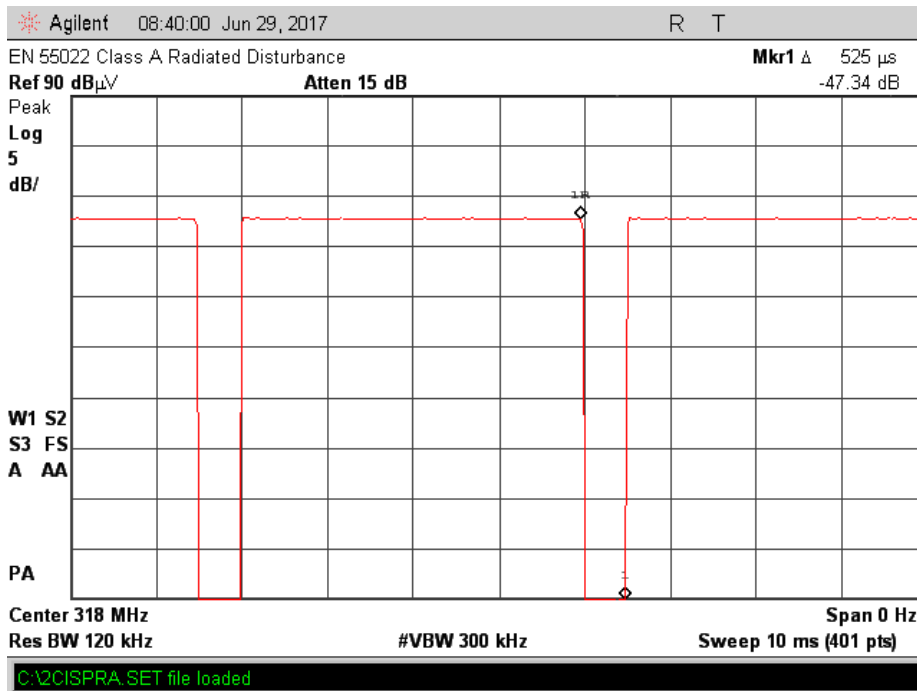
$(12,500 - 3750) / (470-260) =$  limit change per MHz  
 $(8,750) / (210) =$  limit change per MHz  
41.67 = limit change per MHz

470 MHz – 317.9 MHz = 152.1 MHz delta  
 $152.1 * 41.67 = 6,338 \mu\text{V}$   
 $12,500 \mu\text{V} - 6,338\mu\text{V} = 6,162 \mu\text{V} =$  limit at 317.9 MHz

Average limit =  $(20 \log 6,162) = 75.79 \text{ dB}\mu\text{V/m}$   
Peak Limit = Average limit +20 dB  
Peak Limit = 95.79 dB $\mu\text{V/m}$

### Duty Cycle Correction Calculations





Off time = (15 \* 0.525) + (1 \* 26.25) = 34.15 milliseconds

On time = 65.85 milliseconds

On time / 100 milliseconds = 0.6585

20 Log 0.6585 = -3.6 dB



**2.3 TRANSMISSION VERIFICATION FOR TRANSMITTER ACTIVATED AUTOMATICALLY**

**2.3.1 Specification Reference**

Part 15 Subpart C §15.231(a)(2), RSS-210 Issue 9 A1.1 (b)

**2.3.2 Standard Applicable**

A transmitter activated automatically shall cease transmission within 5 seconds after activation

**2.3.3 Equipment Under Test and Modification State**

Serial No: None / Test Configuration A

**2.3.4 Date of Test/Initial of test personnel who performed the test**

05. July 2017 / DF

**2.3.5 Test Equipment Used**

The major items of test equipment used for the above tests are identified in Section 3.1.

**2.3.6 Environmental Conditions/ Test Location**

Test performed at TÜV SÜD America Inc. Tampa facility.

Ambient Temperature      23 °C  
 Relative Humidity          36 %

**2.3.7 Additional Observations**

- This is a radiated test.
- Span was set to zero
- Sweep time set to (5) seconds
- EUT is set to transmit mode and observed for (5) seconds

**2.3.8 Sample Computation (Radiated Emission)**

Measuring equipment raw measurement (dBµV) @ 30 MHz		20.0
Correction Factor (dB)	Cable 2	0.24
	TEMCO0011 (antenna)	18.70
<b>Reported QuasiPeak Final Measurement (dBµV/m) @ 30MHz</b>		<b>38.94</b>

See attached plots.



2.3.9 Test Results

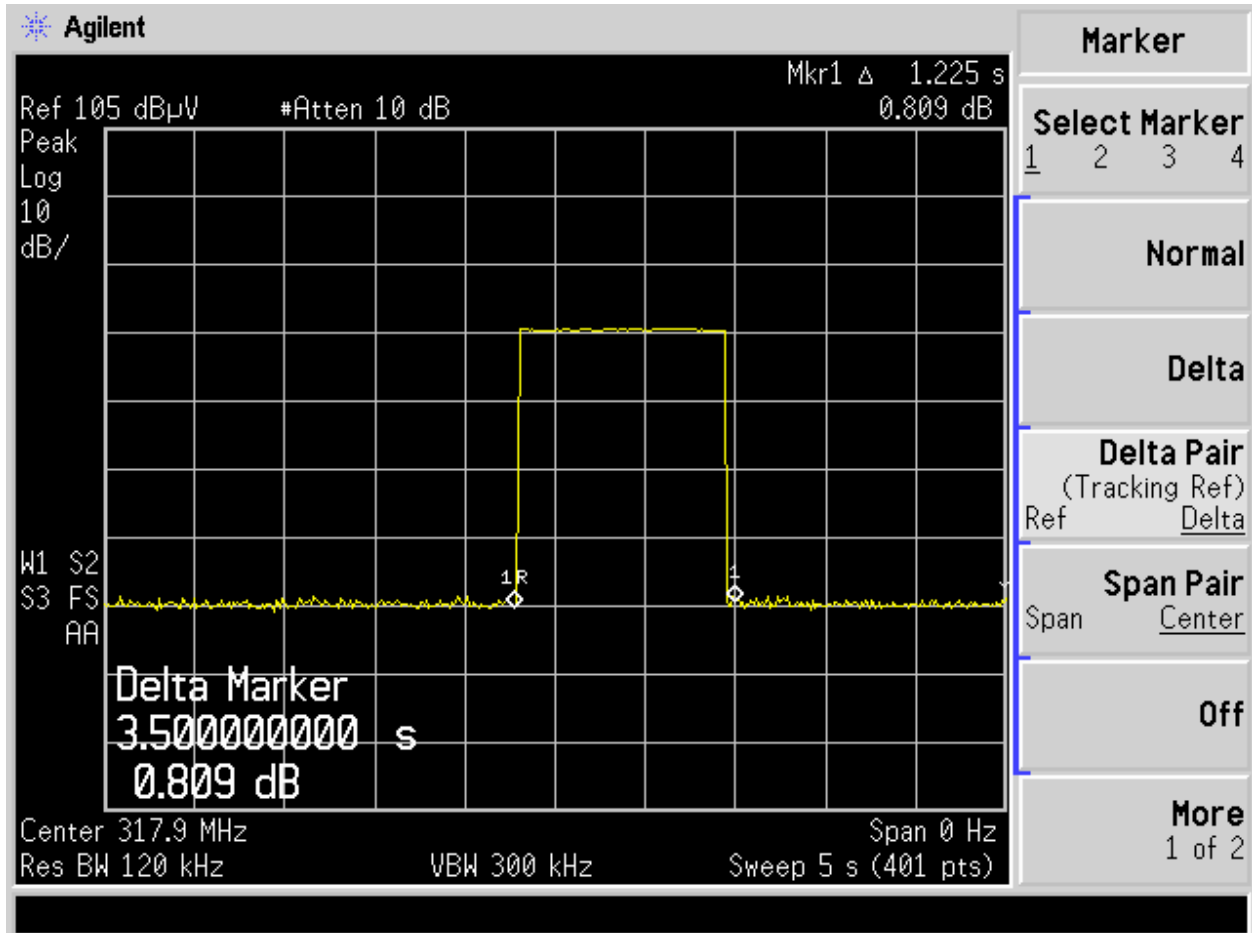


Figure 2.3.9-1 – Time to Cease Transmission

Notes:

Automatically turns off within (1.225) seconds



## **SECTION 3**

### **TEST EQUIPMENT USED**





### 3.1 TEST EQUIPMENT USED

List of absolute measuring and other principal items of test equipment.

ID Number	Test Equipment	Type	Serial Number	Manufacturer	SW/FW Rev	Cal Due Date
Antenna Conducted Port Setup						
Radiated Test Setup						
TEM00005	Bilog Antenna	6112B	2579	Chase EMC	N/A	12/19/2019
TEM00061	Double-ridged waveguide horn antenna	3117	00109296	ETS Lindgren	N/A	2/13/2020
TEM00128	EMI Test Receiver	ESIB 40	100255/040	Rhode & Schwarz		11/16/2019
TEM00012	Spectrum Analyzer	E7405A	MY42000055	Agilent	4/10/2015	3/28/2020
TEM00160	Pre-amplifier	PAM-118A	18040042	Compower	N/A	2/7/2020
TEM00091	Spectrum Analyzer	E7402A	US39150137	Agilent	A.09.02	2/22/2020



### 3.2 MEASUREMENT UNCERTAINTY

For a 95% confidence level, the measurement uncertainties for defined systems are:

**Table 3.2-1 - Values of  $U_{cispr}$  and  $U_{Lab}$**

Measurement	$U_{cispr}$	$U_{Lab}$
Conducted disturbance (mains port) (9 kHz – 150 kHz) (150 kHz – 30 MHz)	3.8 dB 3.4 dB	3.71 dB 3.31 dB
Conducted disturbance (telecom port) (150 kHz – 30 MHz 55 dB LCL) (150 kHz – 30 MHz 65 dB LCL) (150 kHz – 30 MHz 75 dB LCL)	5.0 dB 5.0 dB 5.0 dB	4.11 dB 4.50 dB 4.94 dB
Radiated disturbance (electric field strength on an open area test site or alternative test site) (30 MHz – 1 000 MHz) (1 – 6 GHz) (6-18 GHz)	6.3 dB 5.2 dB 5.5 dB	5.85 dB 4.48 dB 4.48 dB

**Notes:**

$U_{cispr}$  resembles a value of measurement uncertainty for a specific test, which was determined by considering uncertainties associated with the quantities listed in CISPR 16-4-2:2011.

Compliance or non-compliance with a disturbance limit shall be determined in the following manner.

If  $U_{Lab}$  is less than or equal to  $U_{cispr}$  in Table 5.0-1, then:

- compliance is deemed to occur if no measured disturbance exceeds the disturbance limit;
- non-compliance is deemed to occur if any measured disturbance exceeds the disturbance limit.

If  $U_{Lab}$  is greater than  $U_{cispr}$ , then:

- compliance is deemed to occur if no measured disturbance, increased by  $(U_{Lab} - U_{cispr})$ , exceeds the disturbance limit;
- non-compliance is deemed to occur if any measured disturbance, increased by  $(U_{Lab} - U_{cispr})$ , exceeds the disturbance limit.

The TÜV SÜD AMERICA, Inc. calculated MU is less than the internationally accepted MU, therefore an adjustment to the measured result as mentioned above is not necessary.



## **SECTION 4**

### **DIAGRAM OF TEST SETUP**

#### 4.1 RADIATED EMISSION TEST SETUP (BELOW 1 GHZ)

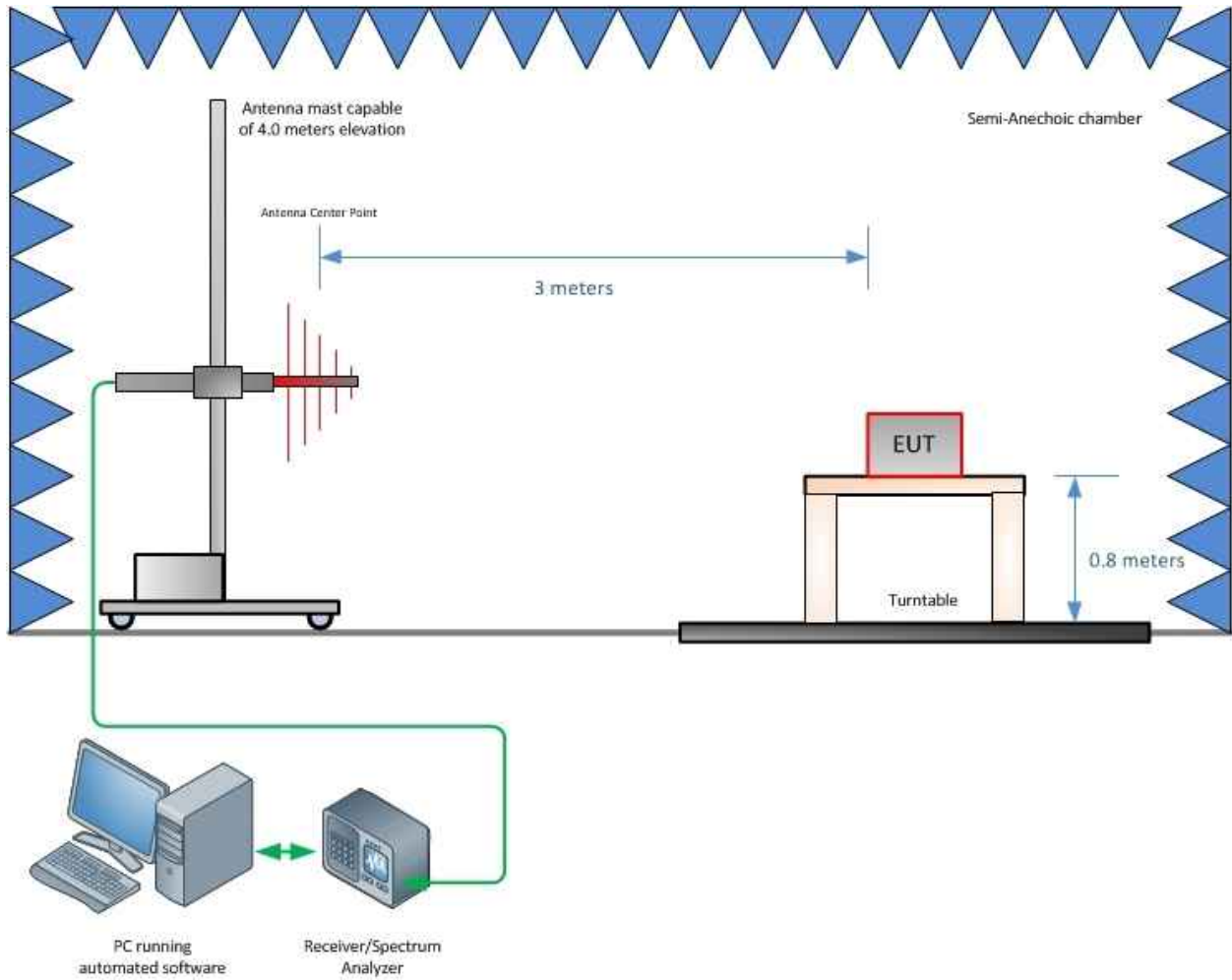


Figure 4.1-1 - Radiated Emission Test Setup (Below 1 GHz)

#### 4.2 RADIATED EMISSION TEST SETUP (ABOVE 1 GHZ)

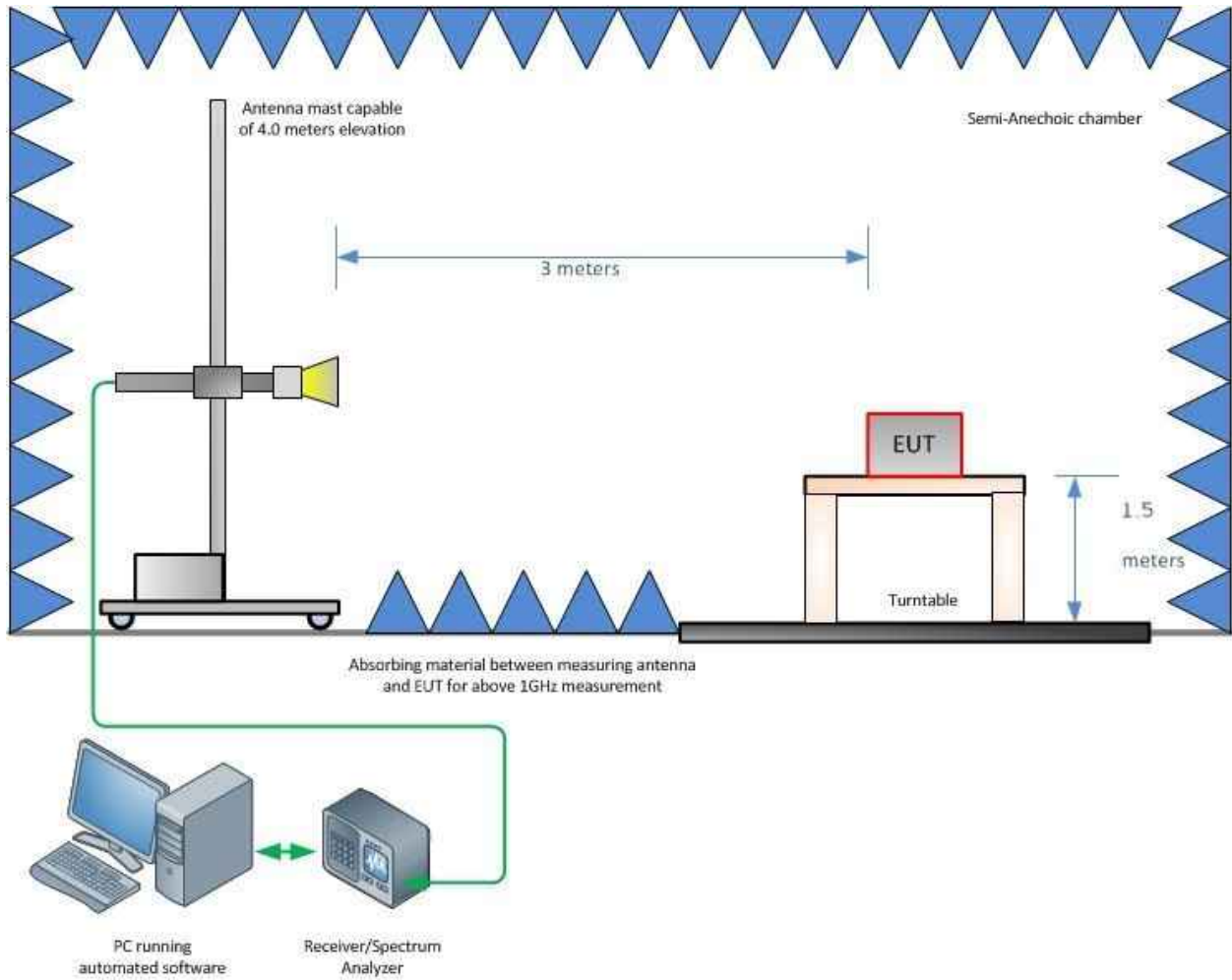


Figure 4.1-2 - Radiated Emission Test Setup (Above 1 GHz)



## **SECTION 5**

### **ACCREDITATION, DISCLAIMERS AND COPYRIGHT**



### 5.1 ACCREDITATION, DISCLAIMERS AND COPYRIGHT

TÜV SÜD America Inc.'s reports apply only to the specific sample tested under stated test conditions. It is the manufacturer's responsibility to assure the continued compliance of production units of this model. TÜV SÜD America, Inc. shall have no liability for any deductions, inferences or generalizations drawn by the client or others from TÜV SÜD America, Inc.'s issued reports.

This report is the confidential property of the client. As a mutual protection to our clients, the public and TÜV SÜD America, Inc., extracts from the test report shall not be reproduced, except in full without TÜV SÜD America, Inc.'s written approval.

This report must not be used to claim product certification, approval, or endorsement by A2LA, NIST, or any agency of the federal government.

TÜV SÜD America, Inc. and its professional staff hold government and professional organization certifications for A2LA, AAMI, ACIL, AEA, ANSI, IEEE, and iNARTE.



A2LA Cert. No. 2955.15

