

ENTRE/MATIC

10012901-01

Digital Keypad Operation Instructions



GTO Access Systems, LLC
(850) 575-0176
USA & Canada (800) 543-4283
www.gtoaccess.com

DESCRIPTION

This digital keypad is a MegaCode series of wireless radio controls designed for use with automatic garage door and gate operators. The MegaCode radio format provides unparalleled security with more than a million different codes.

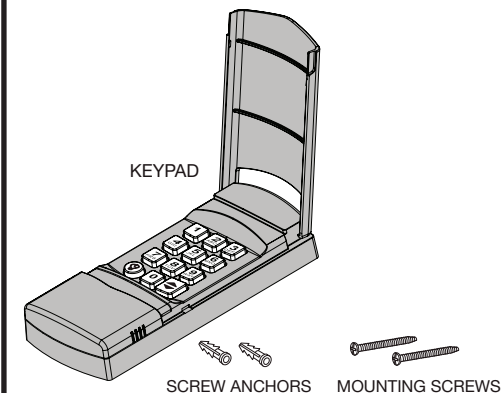
In operation, the user enters their unique code on the unit's keypad (1 to 6 digits long) and presses the button to activate the door operator. For up to 30 seconds after the last activation, the keypad can be re-triggered by simply pressing the button again. This allows the user to stop or reverse the opener quickly, without having to re-enter their code.

The keypad has built-in keypad lighting for use at night or in dark areas. The clear silicone keys are backlit with a pleasing blue glow. By pressing the button first, before entering their code, the user can light up the keypad. Pressing the button twice at any time will light up the keypad.

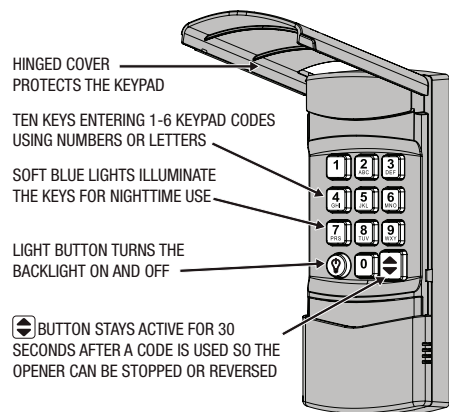
The keypad lockout timer will disable the keypad after 10 activations. The keypad must remain idle for 30 seconds before new attempts.

MegaCode receivers are programmed by sending a signal from the user's transmitters. This stores the transmitter's code into the receiver's memory. The receiver will retain its memory even without power and will only activate from these "memorized" transmitters. Each keypad code can be considered a different transmitter. Each MegaCode receiver can remember a maximum of 10 transmitter codes. Any combination of portable transmitters and keypad codes up to the maximum number can be entered.

COMPONENTS



KEYPAD FEATURES



PROGRAMMING OPERATORS

1 Refer to the instructions provided with the garage door opener to set it into "learn" mode.

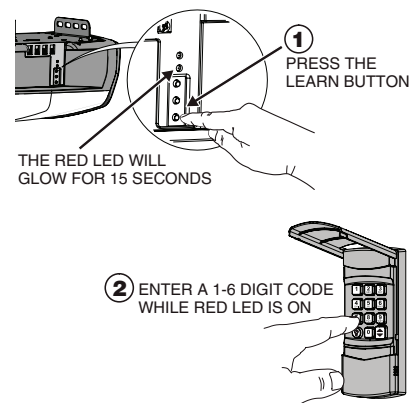
Press the opener's LEARN BUTTON for 1 second and release. The opener should BEEP and the LIGHT should BLINK once. The RED LED will remain lit in Learn Mode for 15 seconds.

2 While the RED LED is lit, enter a 1-6 digit code into the keypad. Then PRESS and HOLD the keypad's key until the opener BEEPS and the light BLINKS once.

Repeat Steps 1 & 2 for any additional keypad codes.

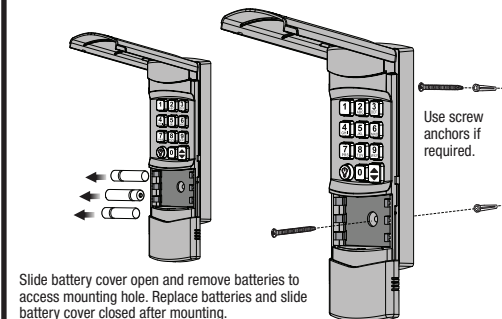
DELETING A KEYPAD CODE

To delete a keypad code that you no longer want follow the same steps above. The opener will recognize the code and delete it from memory. The RED LED and LIGHT will blink 4 times to show the code was successfully deleted.



WALL MOUNTING

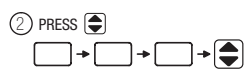
MOUNT THE KEYPAD IN CLEAR VIEW OF THE DOOR WITH THE TWO SCREWS SUPPLIED



KEYPAD OPERATION

DAYTIME OPERATION

1 ENTER THE KEYPAD CODE

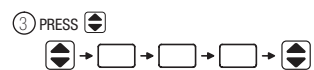


1-6 DIGIT KEYPAD CODE THAT WAS ENTERED INTO OPENER

NIGHTTIME OPERATION

1 PRESS (LIGHTS KEYPAD)

2 ENTER THE KEYPAD CODE

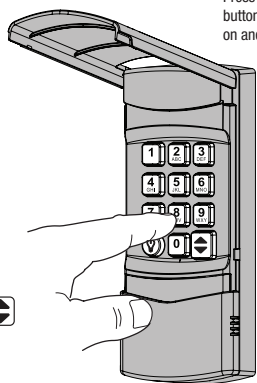


1-6 DIGIT KEYPAD CODE THAT WAS ENTERED INTO OPENER

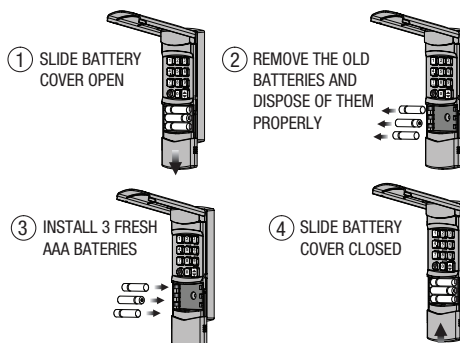
NOTE: TO STOP OR REVERSE THE OPENER, THE BUTTON CAN BE PRESSED AGAIN FOR UP TO 30 SECONDS WITHOUT RE-ENTERING THE CODE.

LIGHT OPERATION

Press the LIGHT button to turn backlight on and off.



CHANGING BATTERIES



Follow the steps in the diagram and use caution to keep batteries away from children.

Replace old batteries with fresh AAA Alkaline batteries.

Properly dispose of old batteries.

Many electronic stores and supermarkets have battery recycling bins.

Alkaline batteries can be safely disposed of with normal household waste.

Never dispose of batteries in fire because they could explode.

LIMITED WARRANTY

This product is warranted to the consumer against defects in material and workmanship for one year from the date of purchase. This warranty applies to first retail buyers of new devices. Warrantor will repair, or at its option, replace, any device it finds that requires service under this warranty, and will return the repaired or replaced device to the consumer at the warrantor's cost. For warranty service and shipping instructions contact warrantor at the address shown below. Devices must be sent to warrantor for service at owner's expense. The remedies provided by this warranty are exclusive. Implied warranties under state law are to the one year period of this written warranty. Some states do not allow limitations on how long an implied warranty lasts, so the above limitation may not apply to you. In order to be protected by this warranty, save your proof of purchase and send copy with equipment should repair be required. This warranty gives you specific legal rights, and you may also have other rights which vary from state to state.

All products returned for warranty service require a Return Product Authorization Number (RPA#). Contact Linear Technical Service at 1-800-543-1236 for an RPA# and other important details.

WARNING: Changes, modifications or adjustments not expressly approved by GTO Access Systems, LLC could void the user's authority to operate this equipment. There Are No User Serviceable Parts.

NOTICE: This device complies with Industry Canada license-exempt RSS standard(s). Operation is subject to the following two conditions: (1) this device may not cause interference, and (2) this device must accept any interference, including interference that may cause undesired operation of the device.

Le présent appareil est conforme aux CNR d'Industrie Canada applicables aux appareils radio exempts de licence. L'exploitation est autorisée aux deux conditions suivantes : (1) l'appareil ne doit pas produire de brouillage, et (2) l'utilisateur de l'appareil doit accepter tout brouillage radioélectrique subi, même si le brouillage est susceptible d'en compromettre le fonctionnement.