



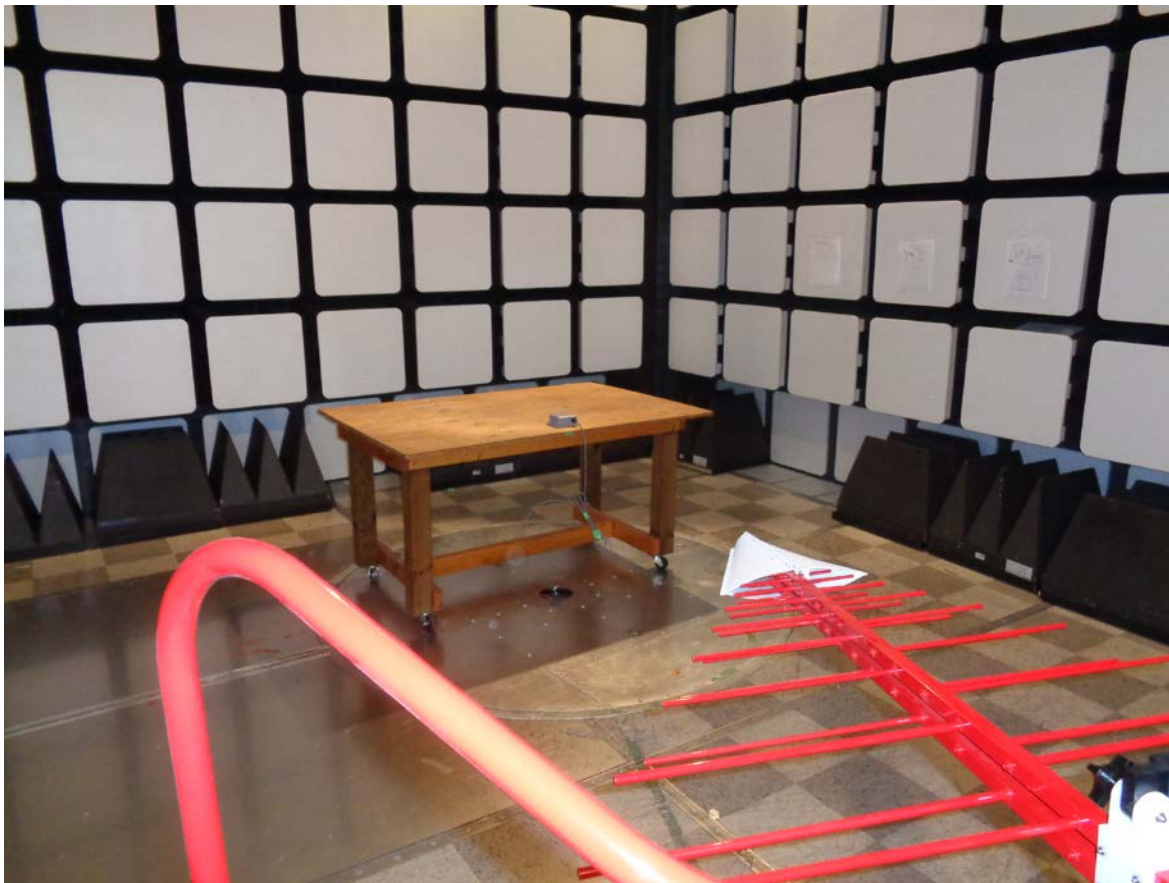
Client	Senstar Corporation	
Product	Wireless Gate Sensor Module	
Standard(s)	RSS 247 Issue:1 / FCC Part 15 Subpart C 15	


Radiated Emissions Below 30 MHz



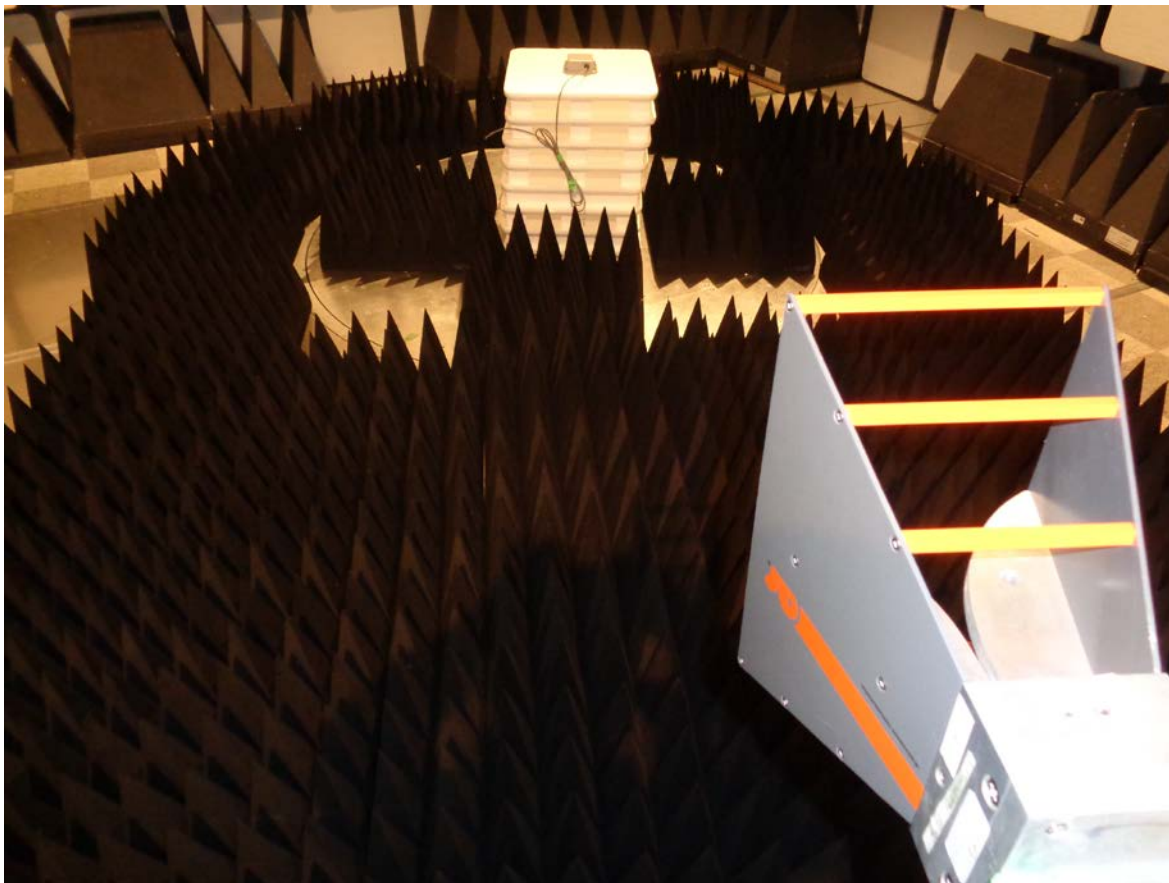
Client	Senstar Corporation	
Product	Wireless Gate Sensor Module	
Standard(s)	RSS 247 Issue:1 / FCC Part 15 Subpart C 15	

Radiated Emissions 30 MHz to 1 GHz




Client	Senstar Corporation	
Product	Wireless Gate Sensor Module	
Standard(s)	RSS 247 Issue:1 / FCC Part 15 Subpart C 15	

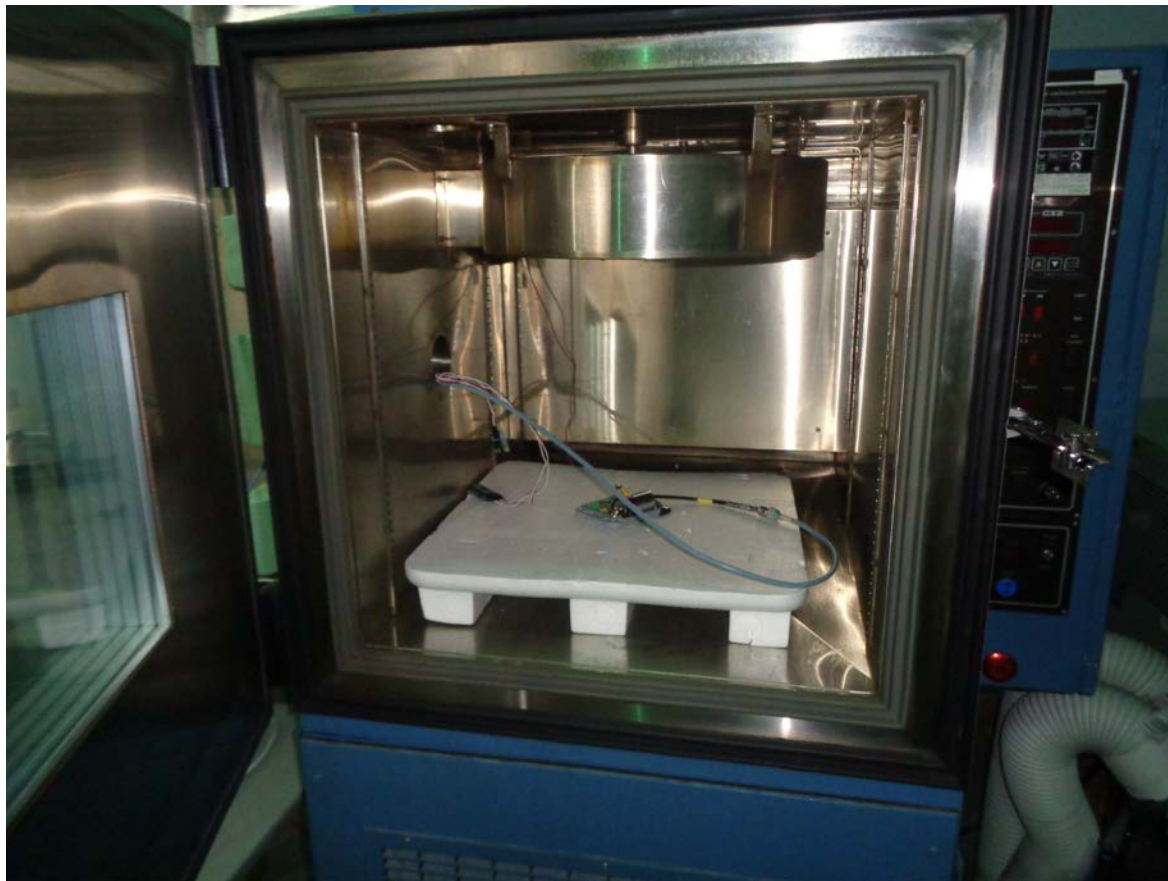
Radiated Emissions above 1 GHz



Note: Additionally the EUT was scanned at 1.5 meter height on top

Client	Senstar Corporation	
Product	Wireless Gate Sensor Module	
Standard(s)	RSS 247 Issue:1 / FCC Part 15 Subpart C 15	

Antenna Conducted Measurements



Note: Direct connection via a 10 dB attenuator to a spectrum analyzer