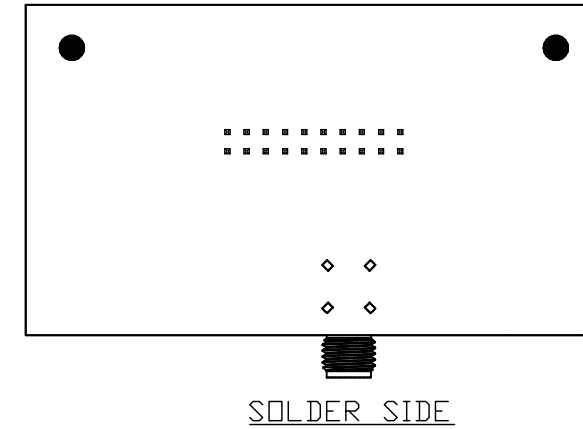
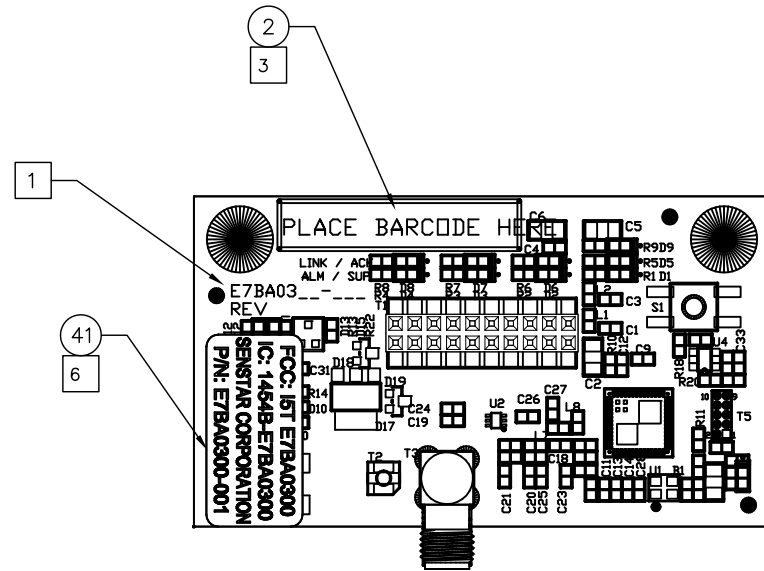



8 7 6 5 4 3

DWG/PART No. E7BA0300-001 SHT 1 REV. A

COMPUTER GENERATED
DO NOT REVISE MANUALLY
DO NOT SCALE DRAWING

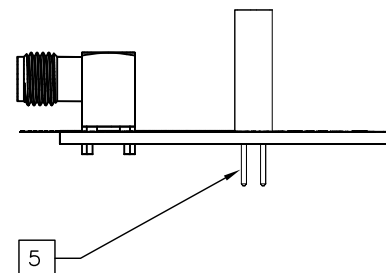
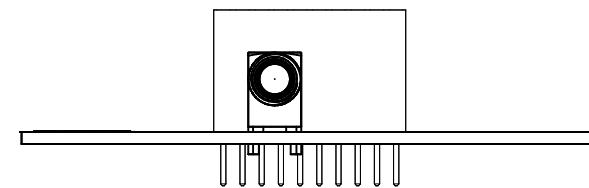
REVISION COLUMN				
ZONE	REV.	DESCRIPTION	APP'D	DATE
	2	INITIAL RELEASE		
	-	CONFIGURATION BASELINE		
	A	PRODUCTION RELEASE		




CAUTION:
THIS ASSEMBLY CONTAINS PARTS SENSITIVE TO DAMAGE BY ELECTROSTATIC DISCHARGE. USE ESD PRECAUTIONARY PROCEDURES WHEN HANDLING.

D
C
B
A

D
C
B
A



REFERENCE DESIGNATION TABLE		
LAST USED	NOT USED	NOT POPULATED
B1		
C33		C16,C17,C24,C25,C30,C31,C33
D19		D10,D11,D14,D15
L8		
MN2		
R22		R12-15,R18,R20,R21
S1		
T5		T4
TP18		
U4		U3,U4

LEAD FREE


RoHS COMPLIANT

NOTICE:
THIS SYMBOL DENOTES THAT THIS PART/ASSEMBLY MUST NOT BE MANUFACTURED OR ASSEMBLED USING CERTAIN MATERIALS OR SUBSTANCES SEE NOTE 4

- NOTES:**
- MARK IN AREAS SHOWN THE CORRECT VARIATION AND VERSION. REFER TO REVISION COLUMN IN TOP RIGHT HAND CORNER AND MARK IN REVISION.
 - COAT PCB WITH CONFORMAL COAT IN ACCORDANCE WITH SPECIFICATION 00SP2700-001.
MASK OFF THE FOLLOWING COMPONENTS:
COMPONENT SIDE: T1,T2,T3,T5 AND MOUNTING HOLES.
SOLDER SIDE: T1 AND MOUNTING HOLES.
 - APPLY BAR CODE LABEL (ITEM 2) DURING ASSEMBLY, BUT BEFORE COMPONENT PLACEMENT BEGINS. SERIAL NUMBER SEQUENCE MUST BE IN THE FORMAT C23YYWWXXX WHERE C23 IS THE PRODUCT PREFIX, YY IS THE YEAR THE UNIT WAS MANUFACTURED, WW IS THE WEEK OF THE YEAR THE UNIT WAS MANUFACTURED AND XXX IS THE INDEX NUMBER.
 - ALL MATERIALS AND PROCESSES USED TO MANUFACTURE AND ASSEMBLE THIS PART OR ASSEMBLY MUST MEET SENSTAR CORPORATION'S REQUIREMENTS FOR ENVIRONMENTAL COMPLIANCE WITH VARIOUS DIRECTIVES ON CERTAIN BANNED SUBSTANCES OR TRADE PRACTICES. SEE SPECIFICATION DOCUMENT # 00SP2500-001.
 - DO NOT TRIM PINS OF EXPANSION HEADER T1 ON SOLDER SIDE OF PCB.
 - IMPRINT LABEL, ITEM 41, WITH THE FOLLOWING AND PLACE ON TOP PCB SURFACE AS SHOWN
1ST LINE: FCC: I5T E7BA0300
2ND LINE: IC: 1454B E7BA0300
3RD LINE: SENSTAR CORP
4TH LINE: P/N E7BA0300-001

THIRD ANGLE PROJECTION	
DIMENSIONS AND TOLERANCES BASED ON ANSI Y14.5 UNLESS OTHERWISE SPECIFIED	
ALL DIMENSIONS APPLY AFTER FINISH	
METRIC DIMENSIONS AND TOLERANCES APPLY	
IMPERIAL DIMENSIONS AND TOLERANCES FOR REF. ONLY	
TOLERANCES	
mm .X	IN .XX
± 0.3	± 0.01
mm .XX	IN .XXX
± 0.13	± 0.005
ANGLES	
± 1.0°	
FINISH	
E7FG03XX-001	GATE SENSOR
NEXT ASSY	USED ON
APPLICATION	

CONTRACT	
DRAWN	DATE
M. NOWELL	15/05/12
CHECKED	
APPROVED	
APPROVED	

FOR BOM SEE SEPARATE LIST(S)		QTY	REF. DESIG.
ITEM	DESCRIPTION		
BILL OF MATERIAL			
THIS DOCUMENT CONTAINS INFORMATION WHICH IS PROPRIETARY TO SENSTAR CORPORATION. REPRODUCTION OR DIVERSION OF THIS DOCUMENT, OR USE OR DISCLOSURE OF ITS CONTENTS TO ANYONE WITHOUT PRIOR WRITTEN PERMISSION OF SENSTAR CORPORATION IS STRICTLY PROHIBITED.			
		119 JOHN CAVANAUGH DR CARP, ONTARIO CANADA K0A 1L0	
DWG/PART DESCRIPTION			
PCB ASSY,WIRELESS GATE SENSOR,RECEIVER			
DWG SIZE		DWG/PART No.	
D		E7BA0300-001	
FSCM No.	PRODUCT/PROJECT	DWG TYPE	SEQUENCE
68327			
SCALE		SHEET	
2 : 1		1 OF 1	

8 7 6 5 4 3 2 1