

Neutral Input - Normal Mode

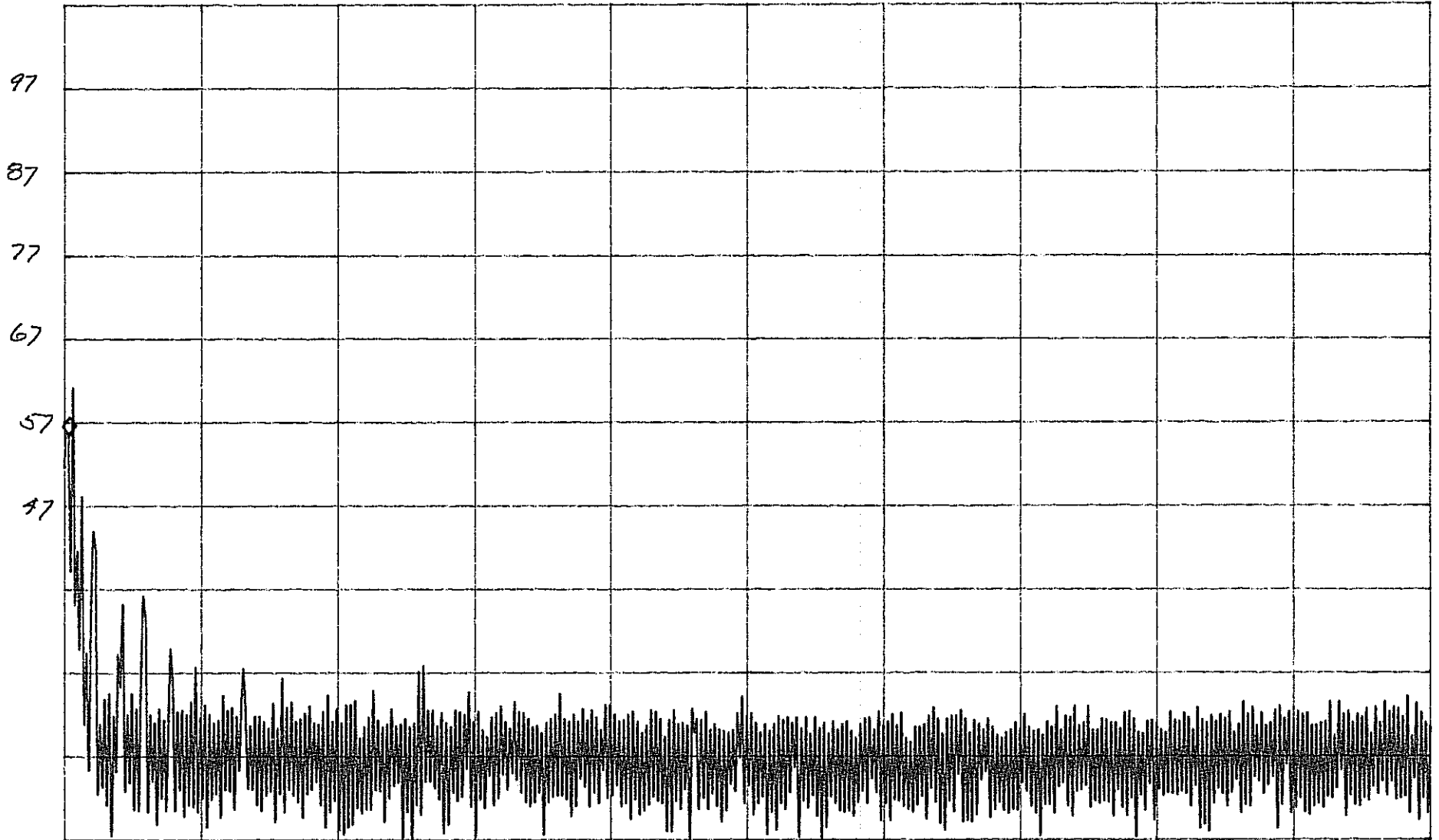
ATTEN 10dB

MKR 55.67dB μ V

RL 107.0dB μ V

10dB/

183kHz



START 150kHz

STOP 10.000MHz

*RBW 10kHz

VBW 10kHz

SWP 250ms

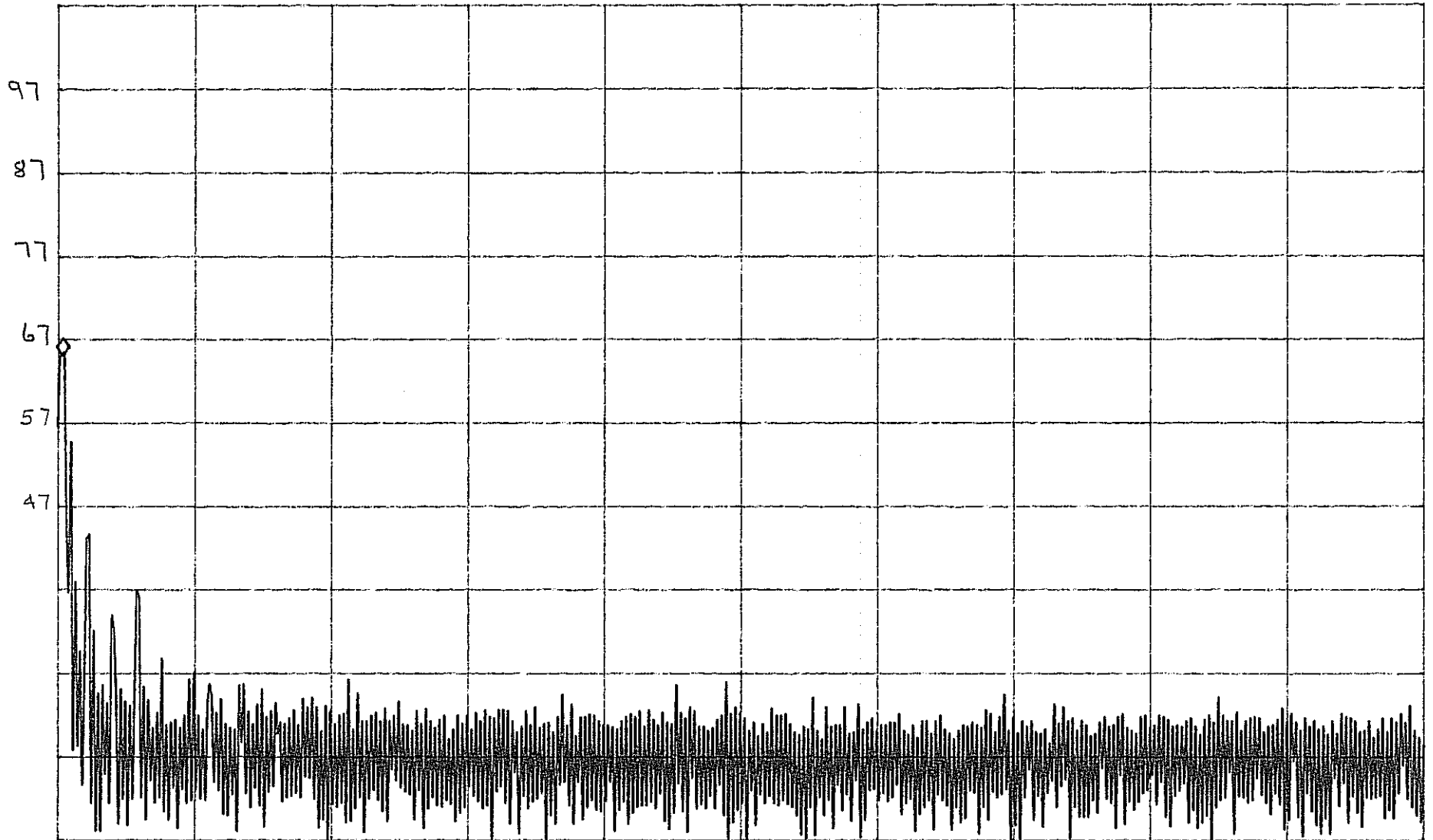
Line Input - Normal Mode

ATTEN 10dB

MKR 65.17dB μ V

RL 107.0dB μ V /BPO

183kHz



START 150kHz

STOP 10.000MHz

*RBW 10kHz

VBW 10kHz

SWP 250ms