

Nucomm - FCC Certification Report

Addendum 6 Internal Product Photographs

FCC ID: I4U23UHPA-P10

Product Base Model Number: 23UHPA-AD-P10-BD

Ultra High Power RF Amplifier

(Per CFR TITLE 47, PART 2, SUB-PART J)

Nucomm, Inc.
101 Bilby Road
Hackettstown, NJ 07840
Tel: 908 852-3700 FAX: 908 813-0399
www.Nucomm.com

PROPRIETARY INFORMATION

This document contains proprietary information, which shall not be reproduced or transferred to other documents or disclosed to others or used for manufacturing or any other purpose without prior written permission of:

Nucomm, INCORPORATED

101 Bilby Road
Hackettstown, NJ 07840

Specifications are subject to change in order to allow for the
introduction of design improvements

Table of Contents

1	INTRODUCTION	5
1.1	23UHPA UPPER AND LOWER HOUSING.....	5
1.2	23UHPA POWER SUPPLY ASSEMBLY 901-P071-01A.....	7
1.3	LOWER HOUSING ASSEMBLY	11

List of Tables

Table 1	Revision History	4
---------	------------------------	---

List of Figures

Figure 1	Internal Upper and Lower Housing view 1.....	5
Figure 2	Internal Upper and Lower Housing view 2.....	6
Figure 3	Power Supply Assembly 901-P071-01A on Upper Cover	7
Figure 4	Power Supply Assembly 901-P071-01A without Shield on Upper Cover	8
Figure 5	Upper Cover 713-H299-00BB	9
Figure 6	Power Supply PCBA 902-P071-01B Top	10
Figure 7	Power Supply PCBA 902-P071-01B Bottom.....	10
Figure 8	Lower Housing Assembly.....	11
Figure 9	RF HEAD CTRL PCBA 902-C145-01B Top.....	11
Figure 10	RF HEAD CTRL PCBA 902-C145-01B Bottom.....	12
Figure 11	Power Amplifier and Relays Assembly Top.....	12
Figure 12	Power Amplifier and Relays Assembly Bottom	13
Figure 13	Front Panel Assembly Inside view	13
Figure 14	Front Panel Assembly Top View	14
Figure 15	Front Panel Assembly Bottom View	14
Figure 16	Diplexer on Front Panel-1	15
Figure 17	Diplexer on Front Panel-2	16
Figure 18	Diplexer on Front Panel-3	17
Figure 19	Diplexer on Front Panel-4	18
Figure 20	Diplexer on Front Panel-5	19
Figure 21	Diplexer on Front Panel-6	20
Figure 22	Power Amp and Relays Mounting Plate.....	21
Figure 23	Mounting Plate	22
Figure 24	High Power AMP Mounted.....	23
Figure 25	High Power AMP.....	24
Figure 26	High Power AMP Inside View.....	25

Table 1 Revision History

Date	Revision	Changed by	Reason for Change
8/08/08	1.0	Jason Wang	Initial release.
8/27/08	1.1	Jason Wang	Added more photos

1 Introduction

This document contains a set of photographs depicting the Ultra High Power Amplifier unit model number 23UHPA-AD-P10-BD required to support the FCC type certification (Per CFR TITLE 47, PART 2, and SUB-PART J). It is an addendum to the Nucomm - FCC Certification Report dated x/xx/08. This document depicts the internal images of the 23UHPA unit.

1.1 23UHPA Upper and Lower Housing

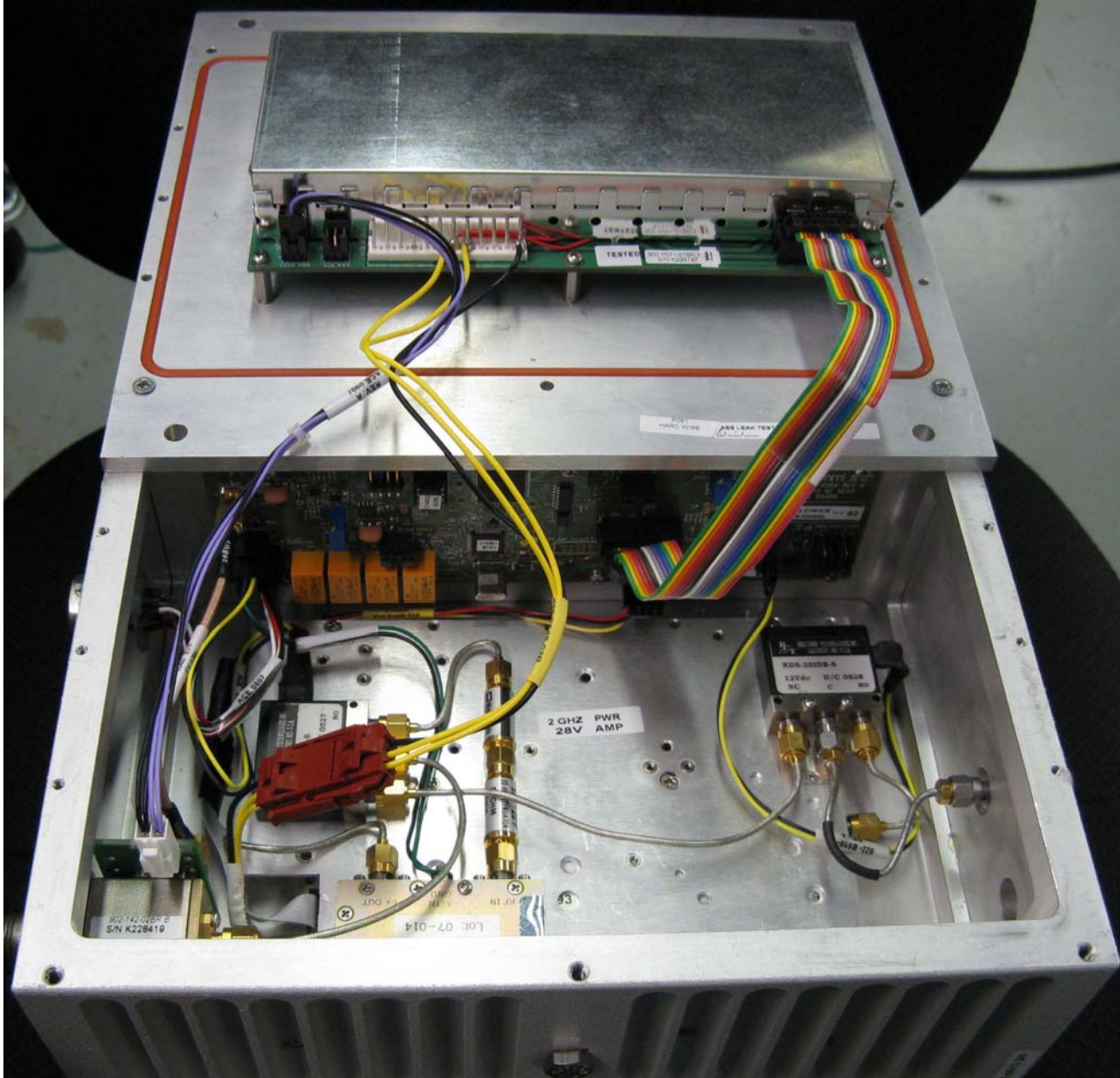


Figure 1 Internal Upper and Lower Housing view 1

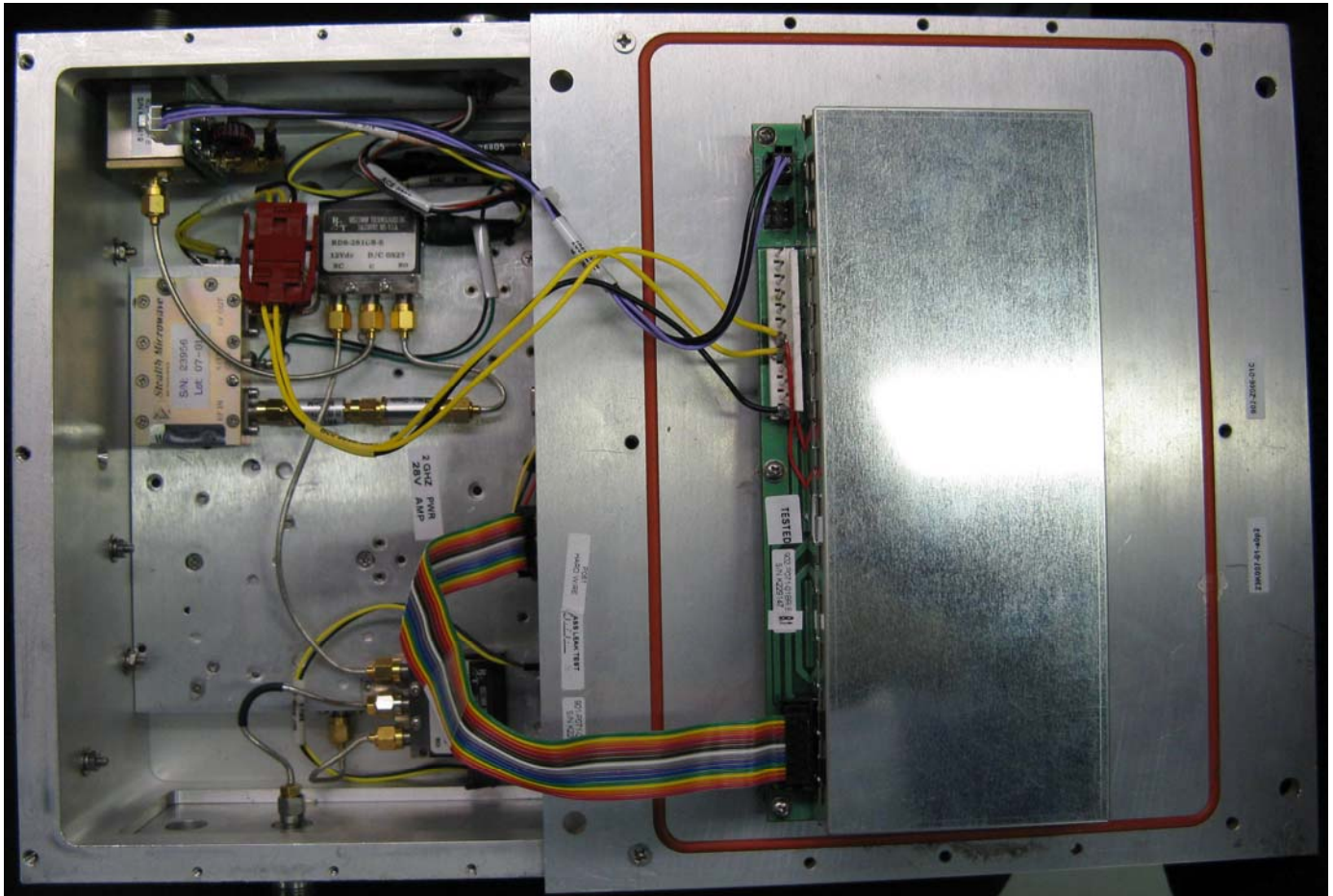


Figure 2 Internal Upper and Lower Housing view 2

1.2 23UHPA Power Supply Assembly 901-P071-01A

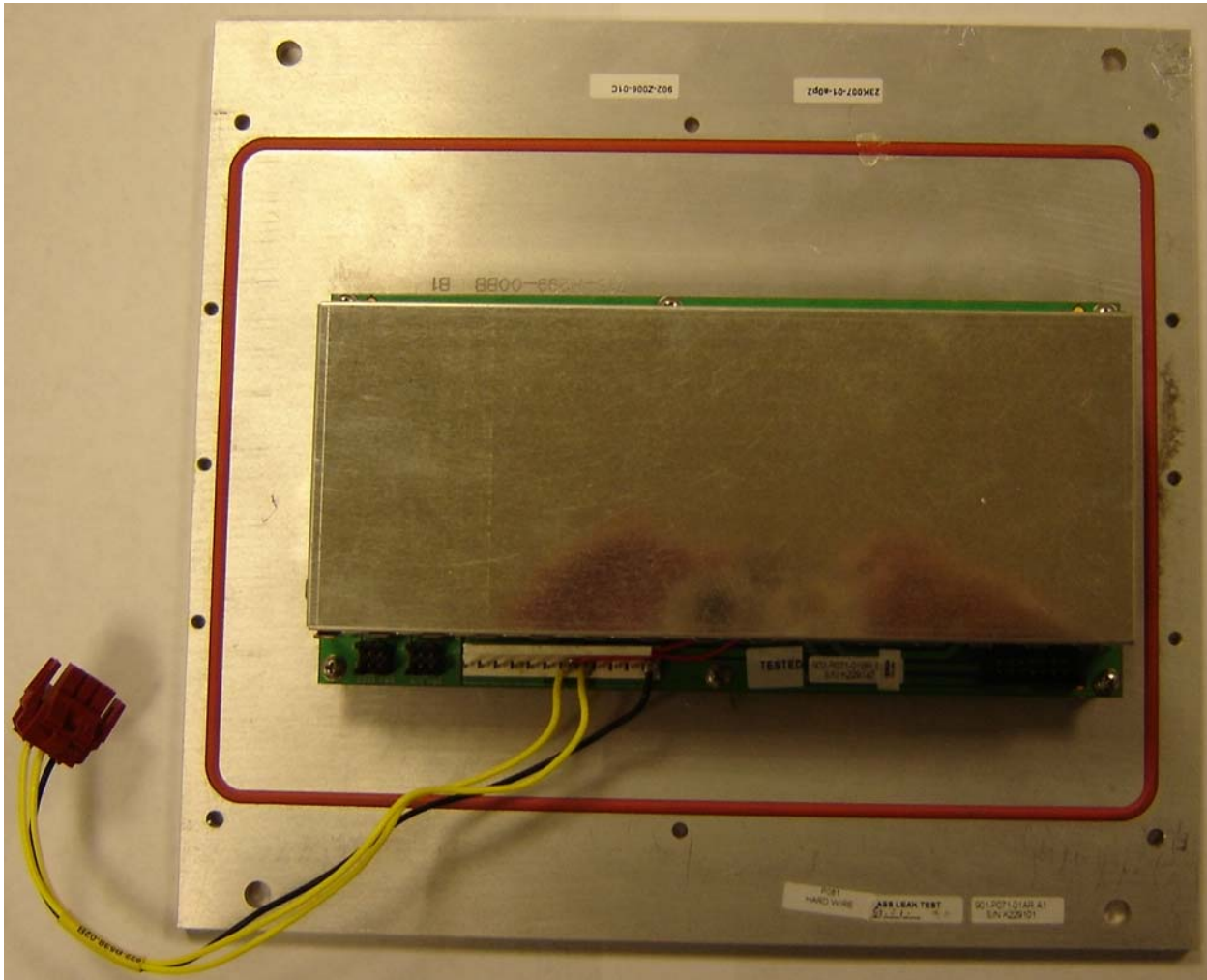


Figure 3 Power Supply Assembly 901-P071-01A on Upper Cover

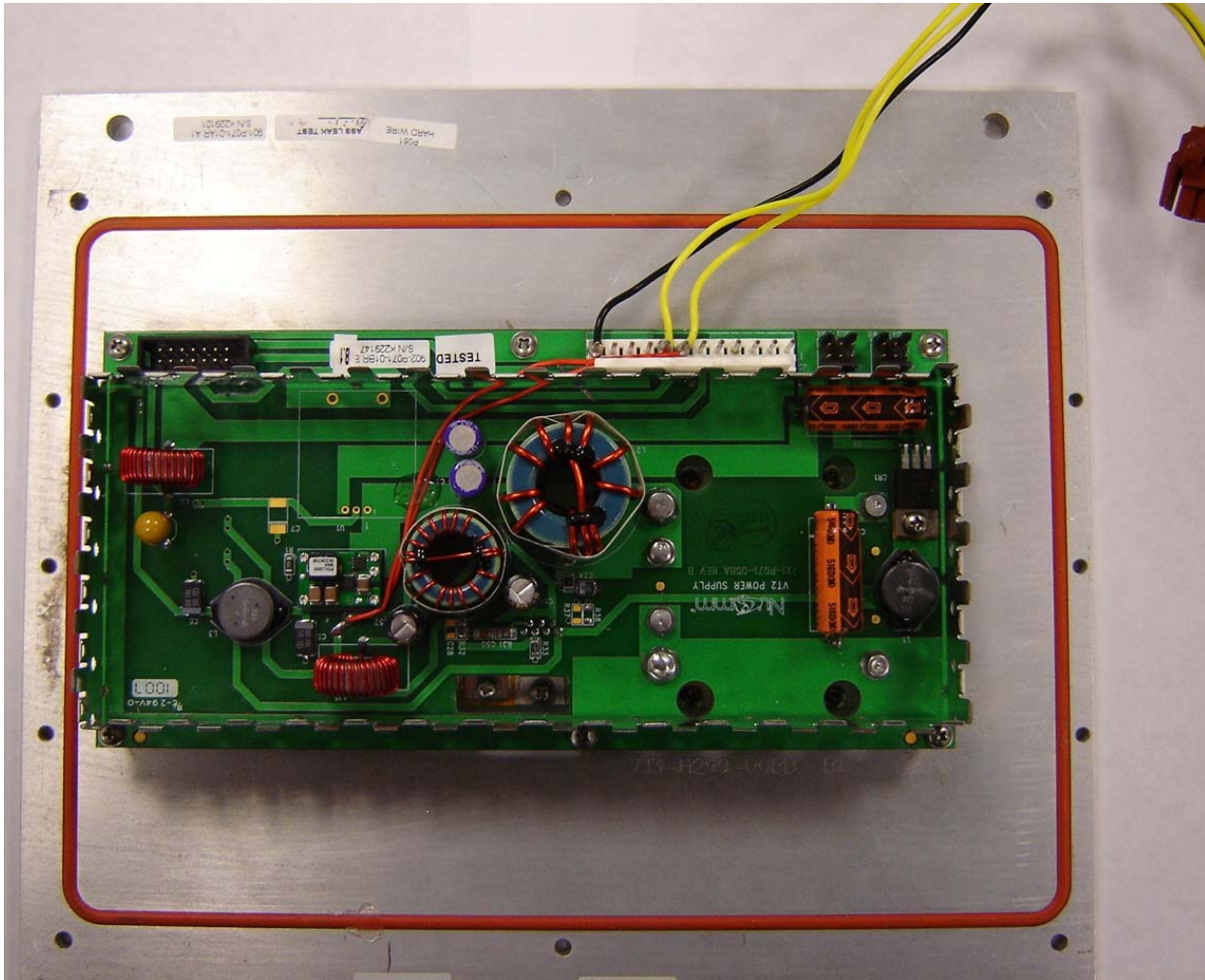


Figure 4 Power Supply Assembly 901-P071-01A without Shield on Upper Cover

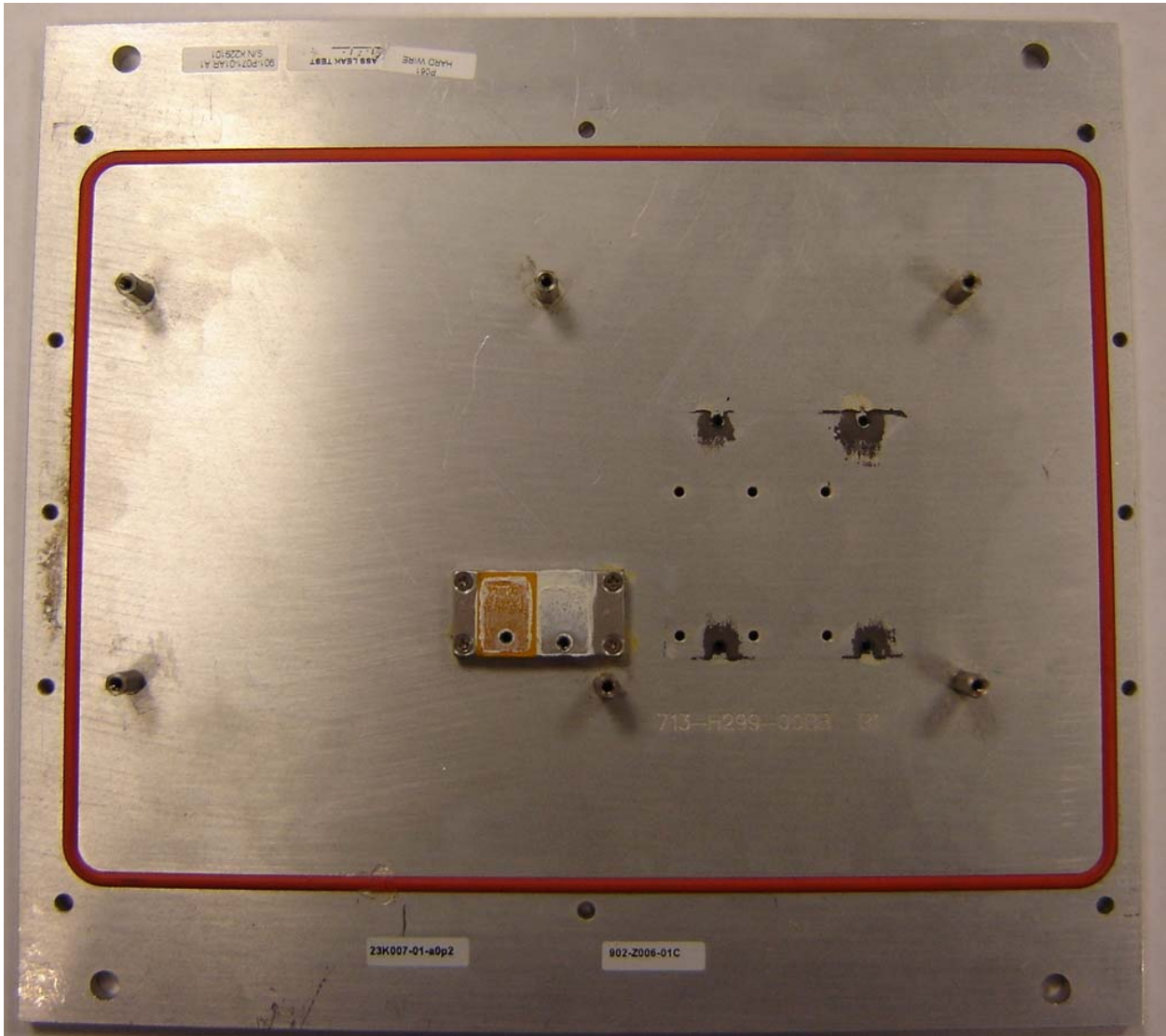


Figure 5 Upper Cover 713-H299-00BB

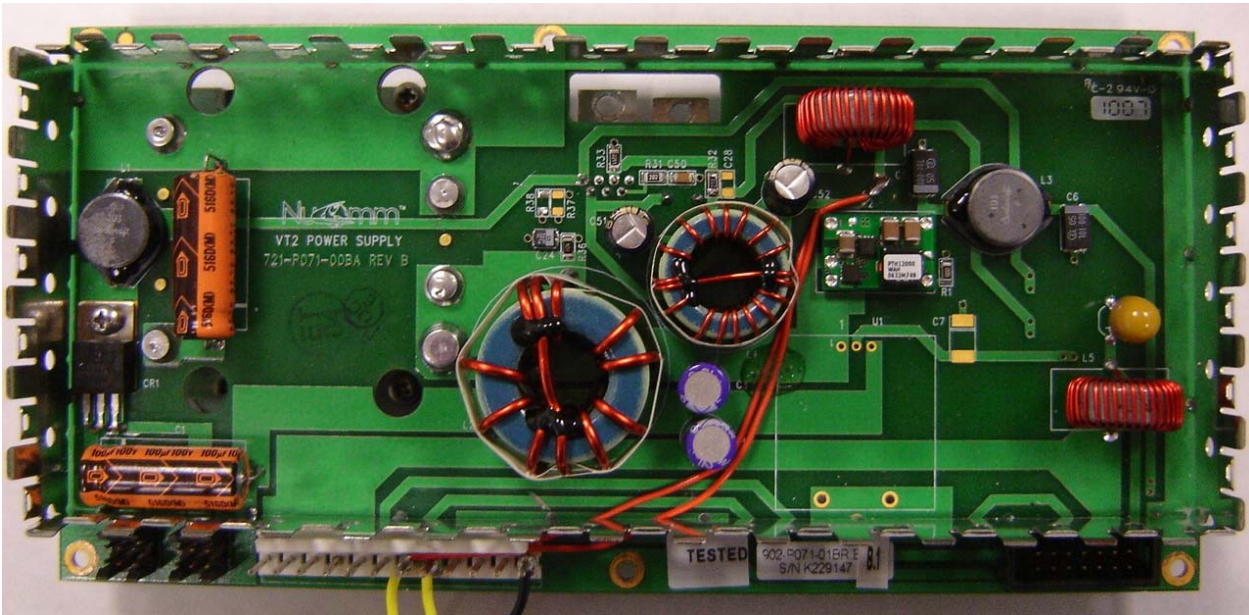


Figure 6 Power Supply PCBA 902-P071-01B Top

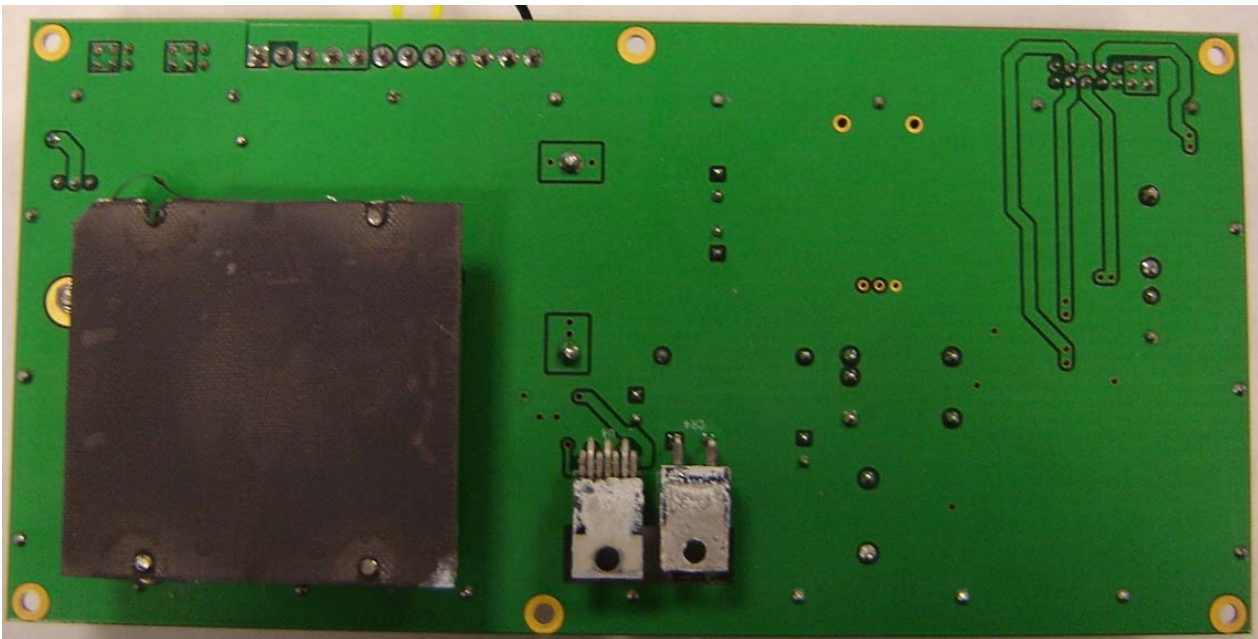


Figure 7 Power Supply PCBA 902-P071-01B Bottom

1.3 Lower Housing Assembly

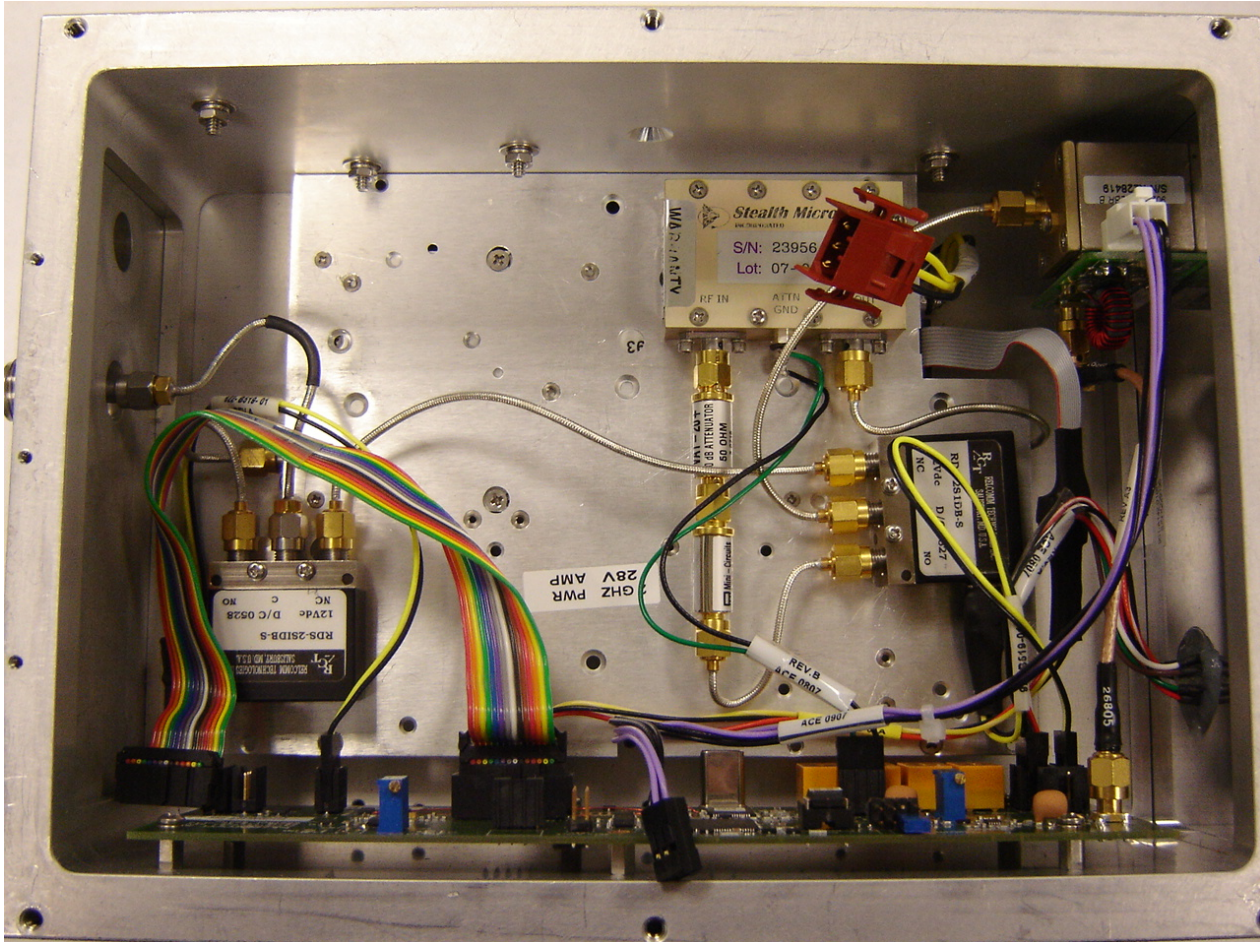


Figure 8 Lower Housing Assembly

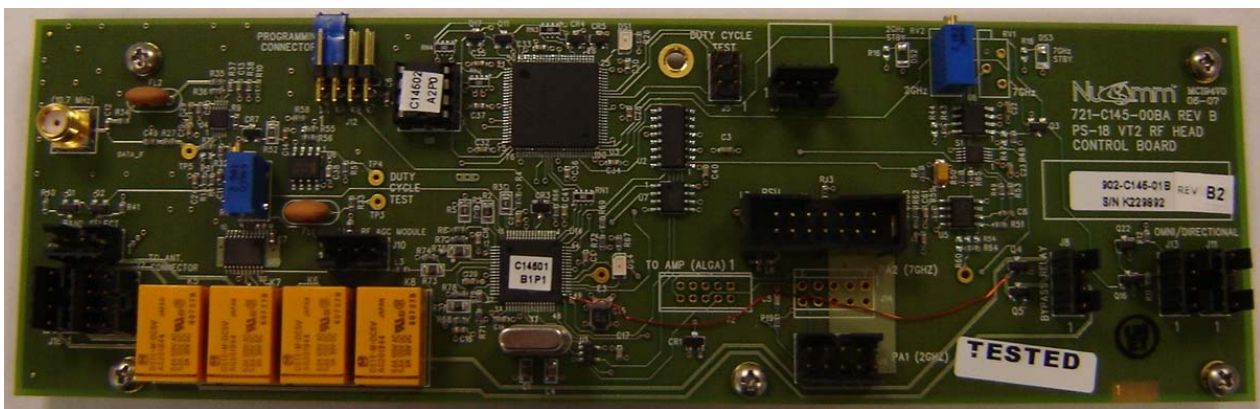


Figure 9 RF HEAD CTRL PCBA 902-C145-01B Top

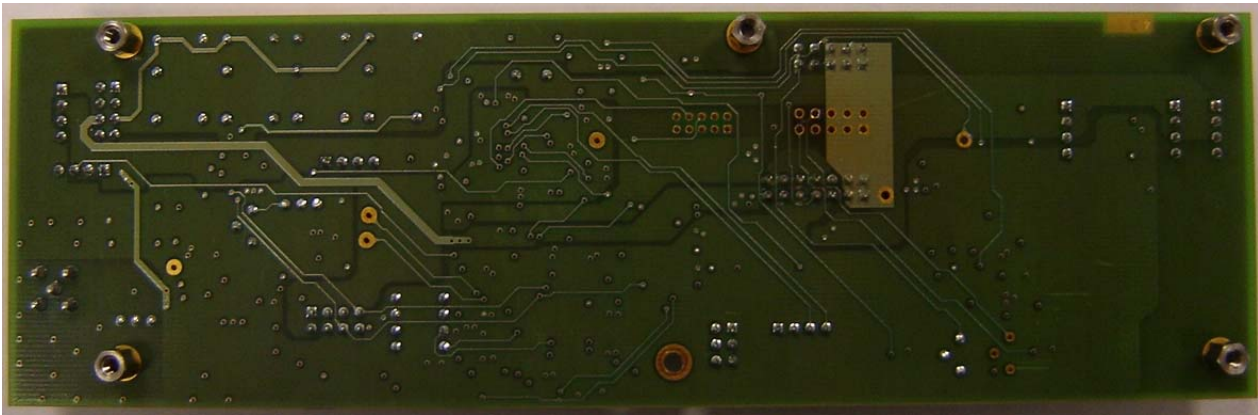


Figure 10 RF HEAD CTRL PCBA 902-C145-01B Bottom

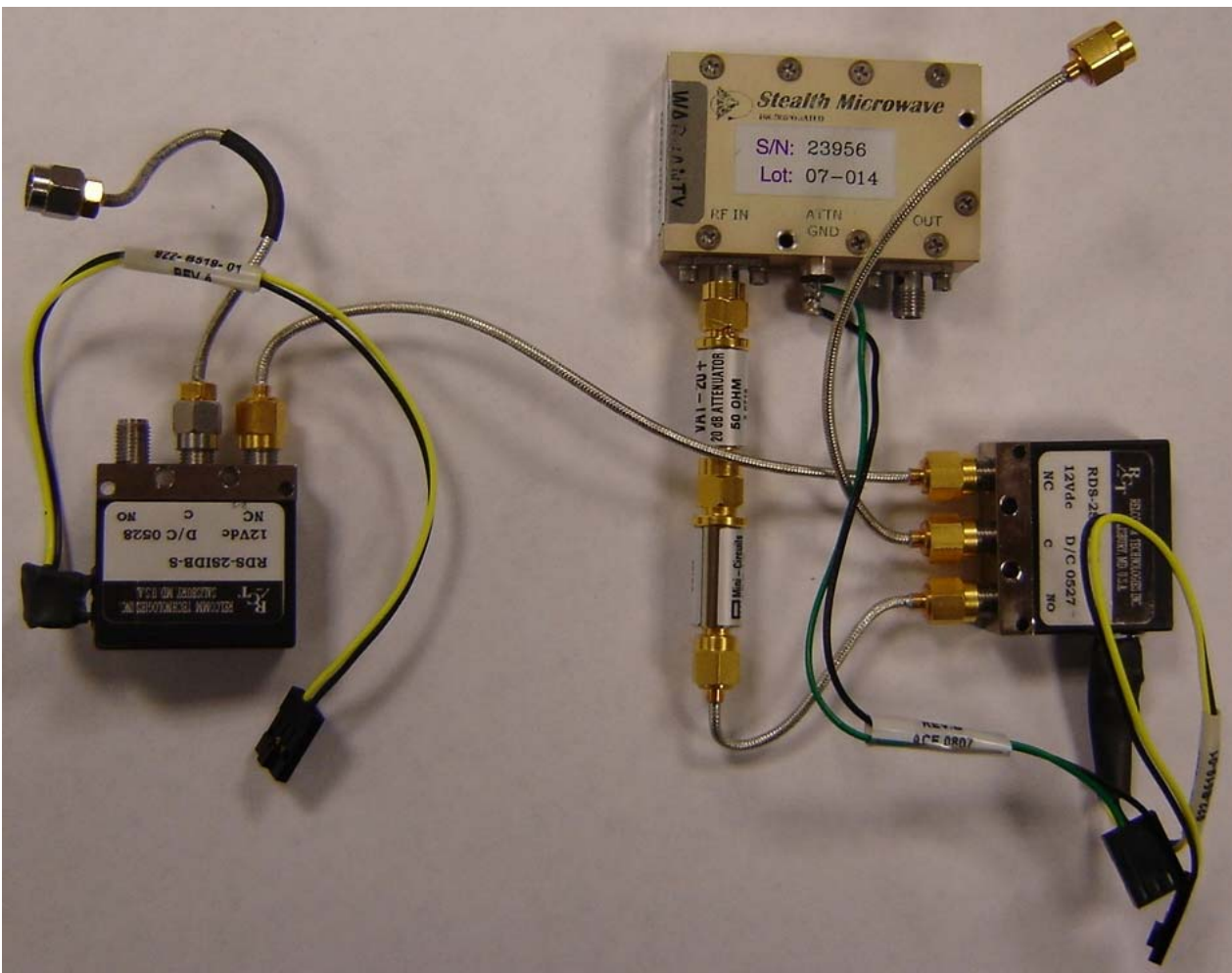


Figure 11 Power Amplifier and Relays Assembly Top

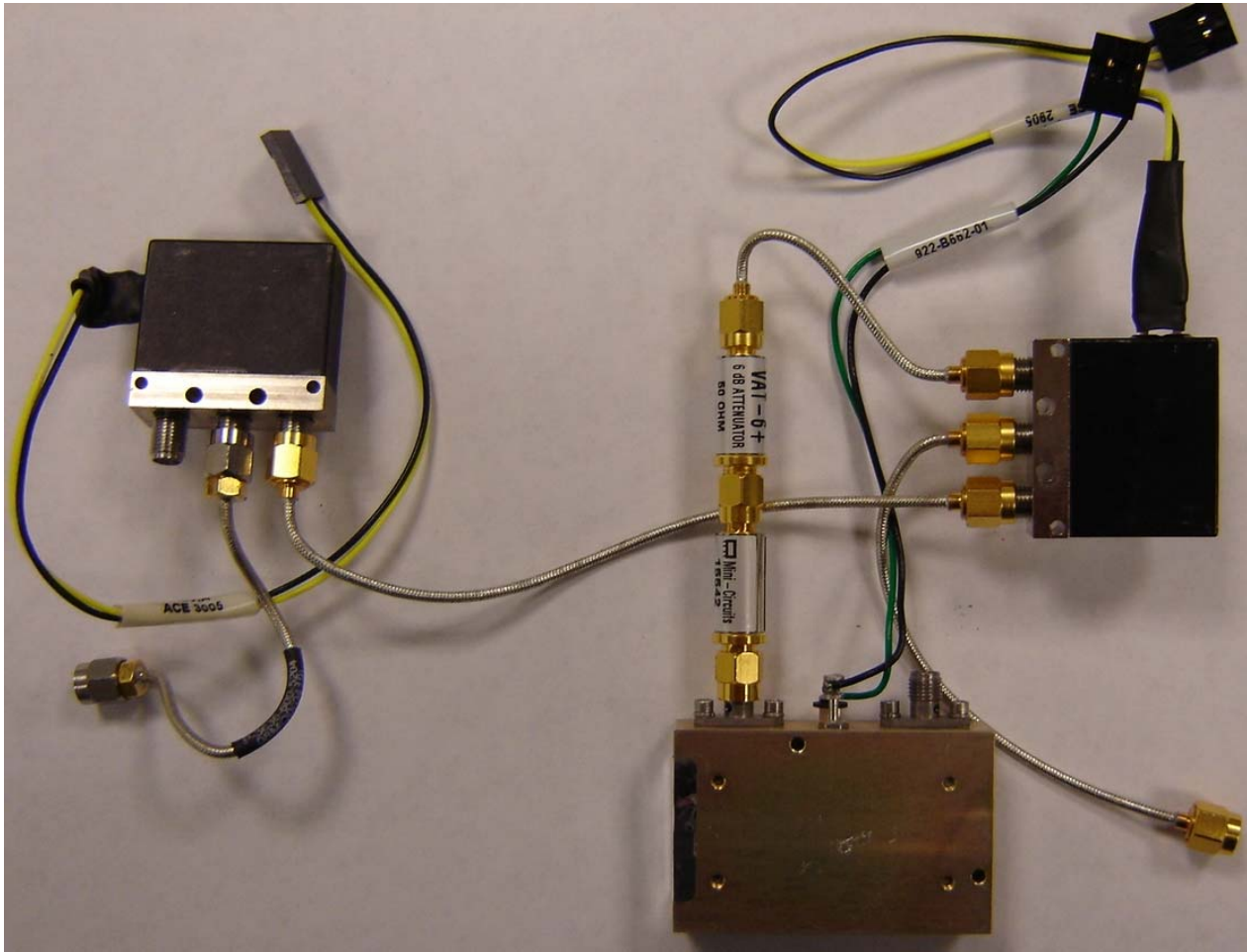


Figure 12 Power Amplifier and Relays Assembly Bottom

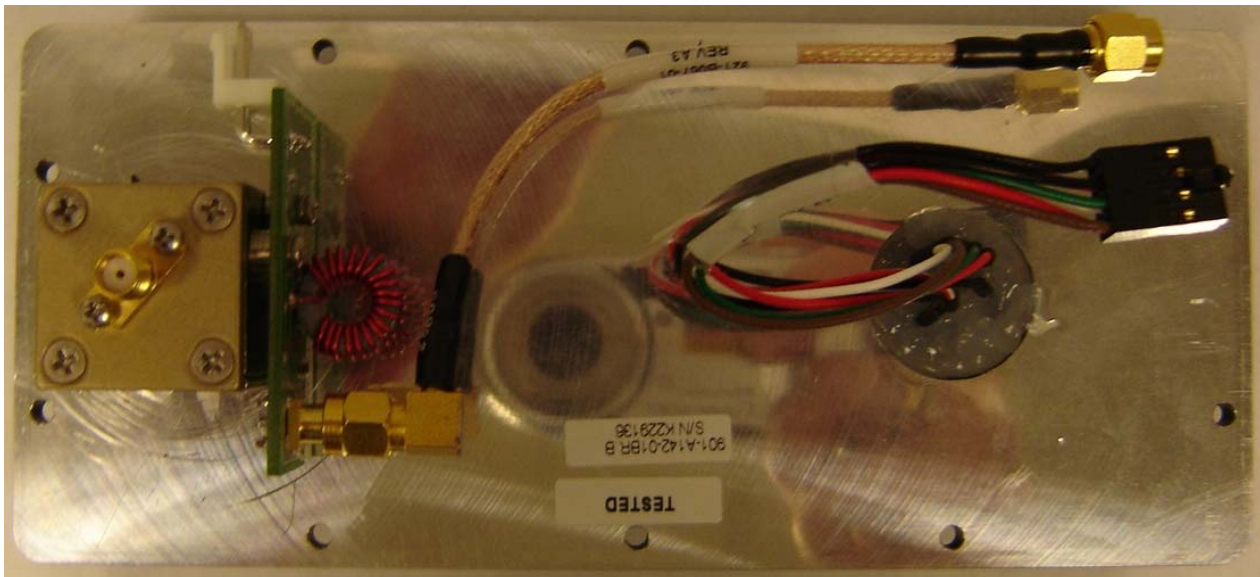


Figure 13 Front Panel Assembly Inside view

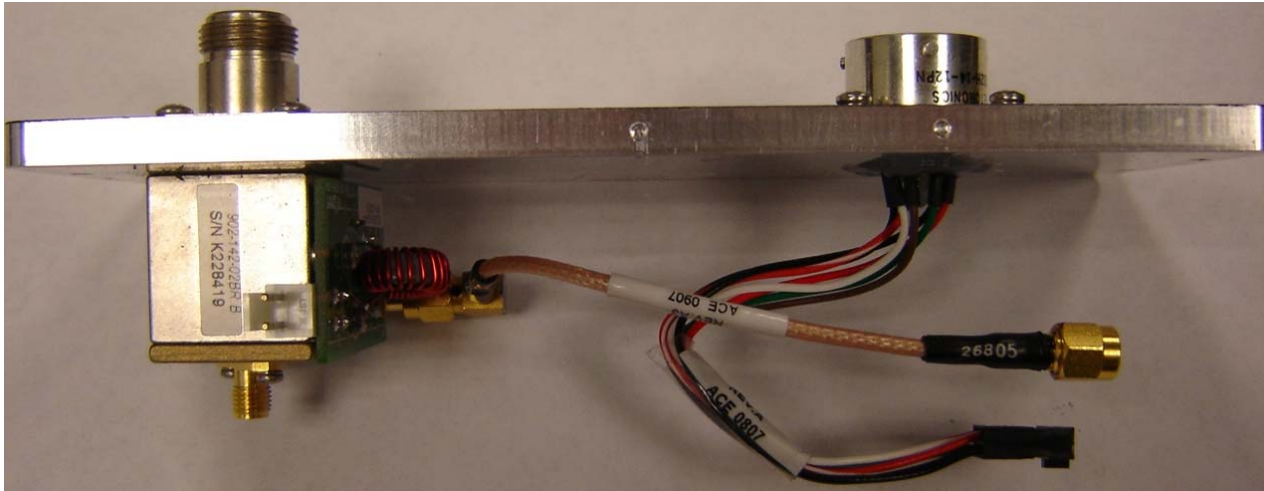


Figure 14 Front Panel Assembly Top View

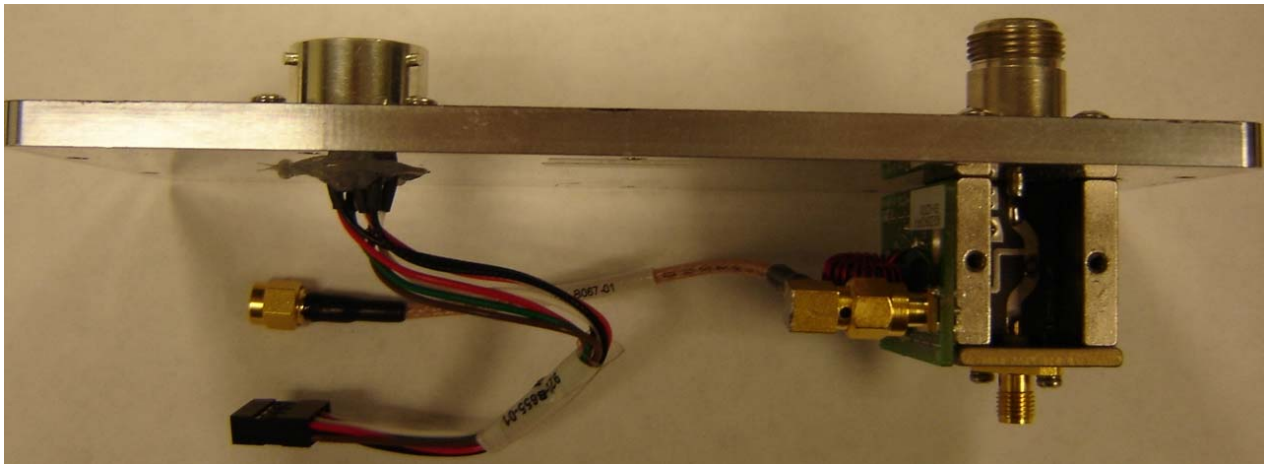


Figure 15 Front Panel Assembly Bottom View

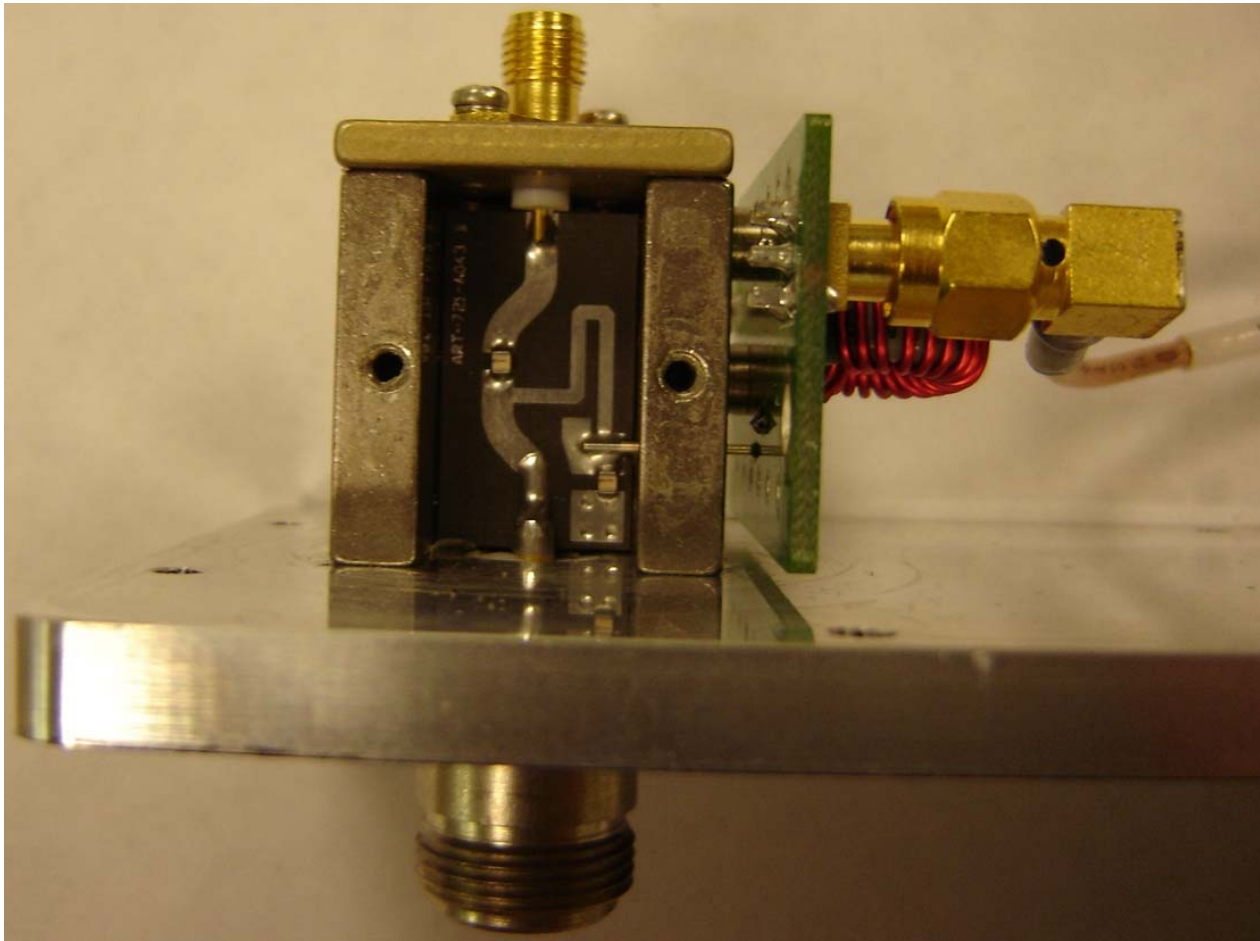


Figure 16 Diplexer on Front Panel-1

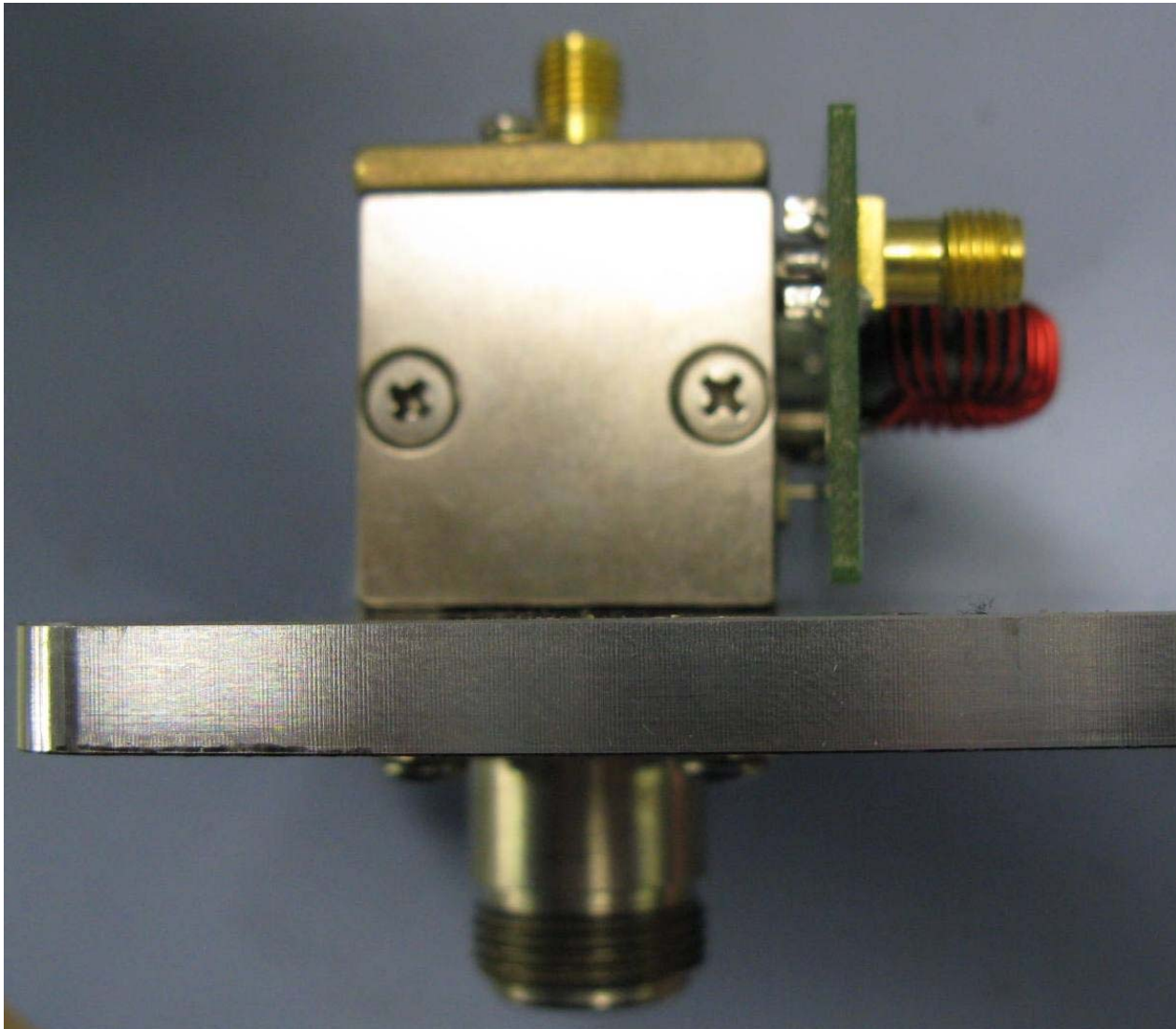


Figure 17 Diplexer on Front Panel-2

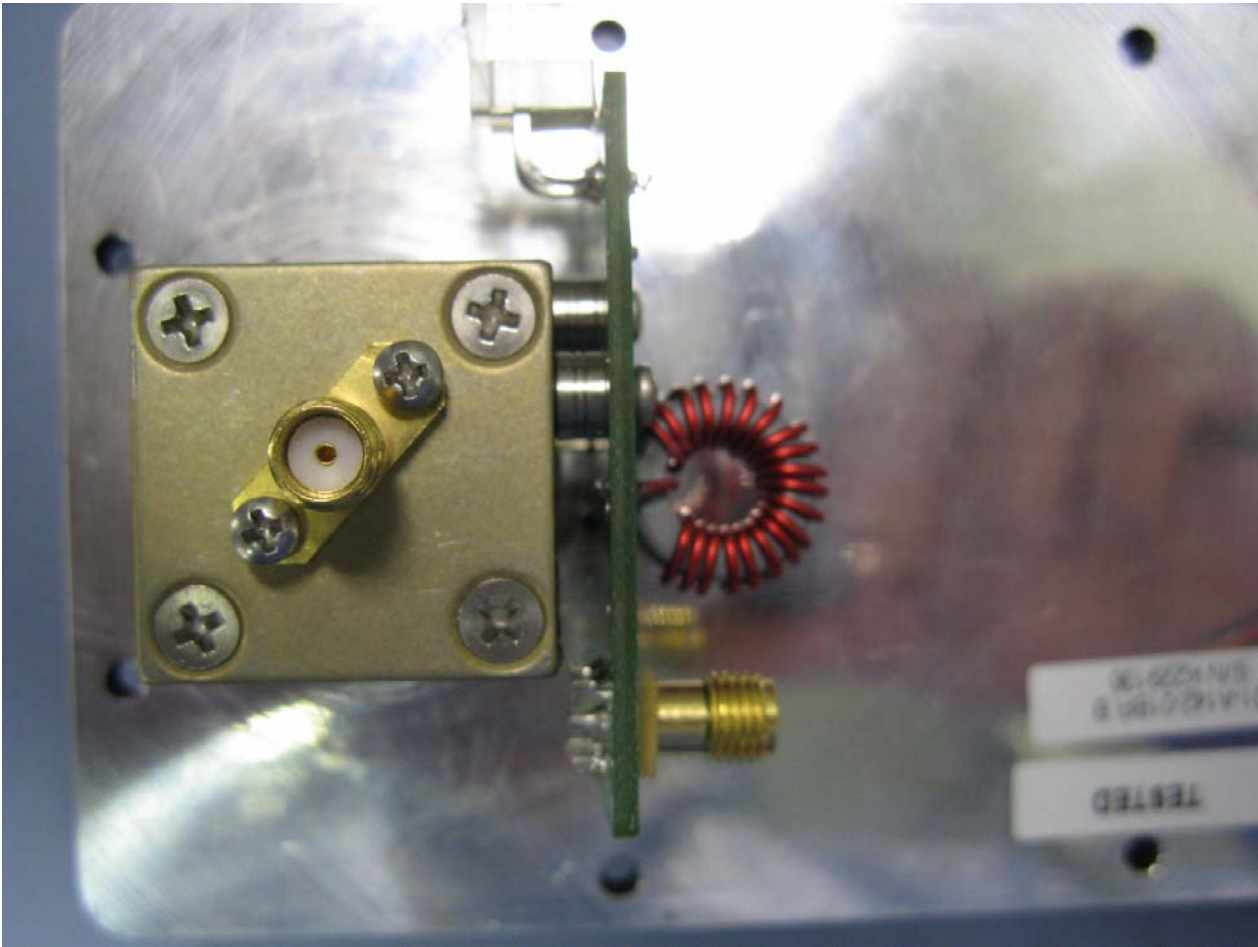


Figure 18 Diplexer on Front Panel-3

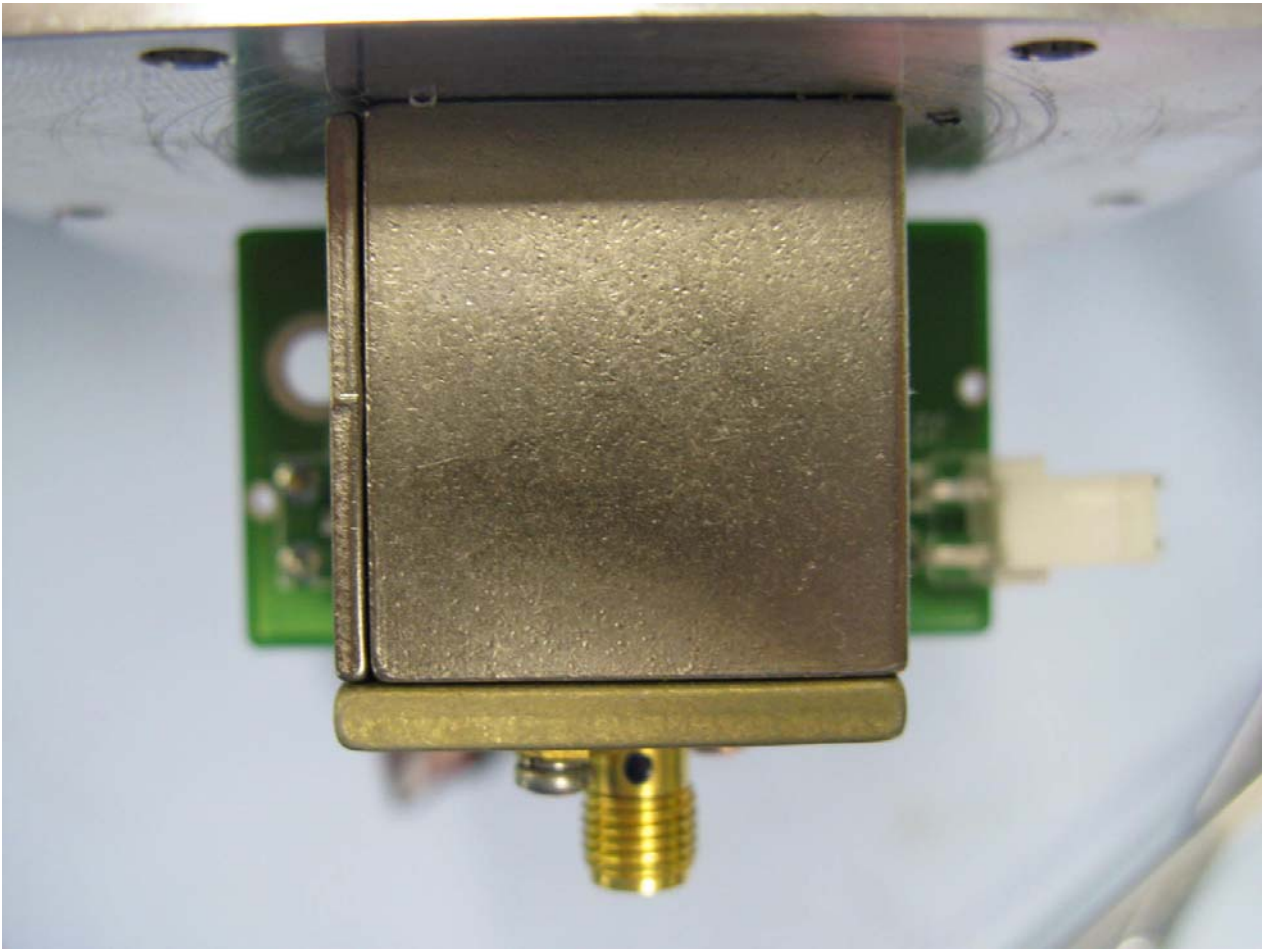


Figure 19 Diplexer on Front Panel-4

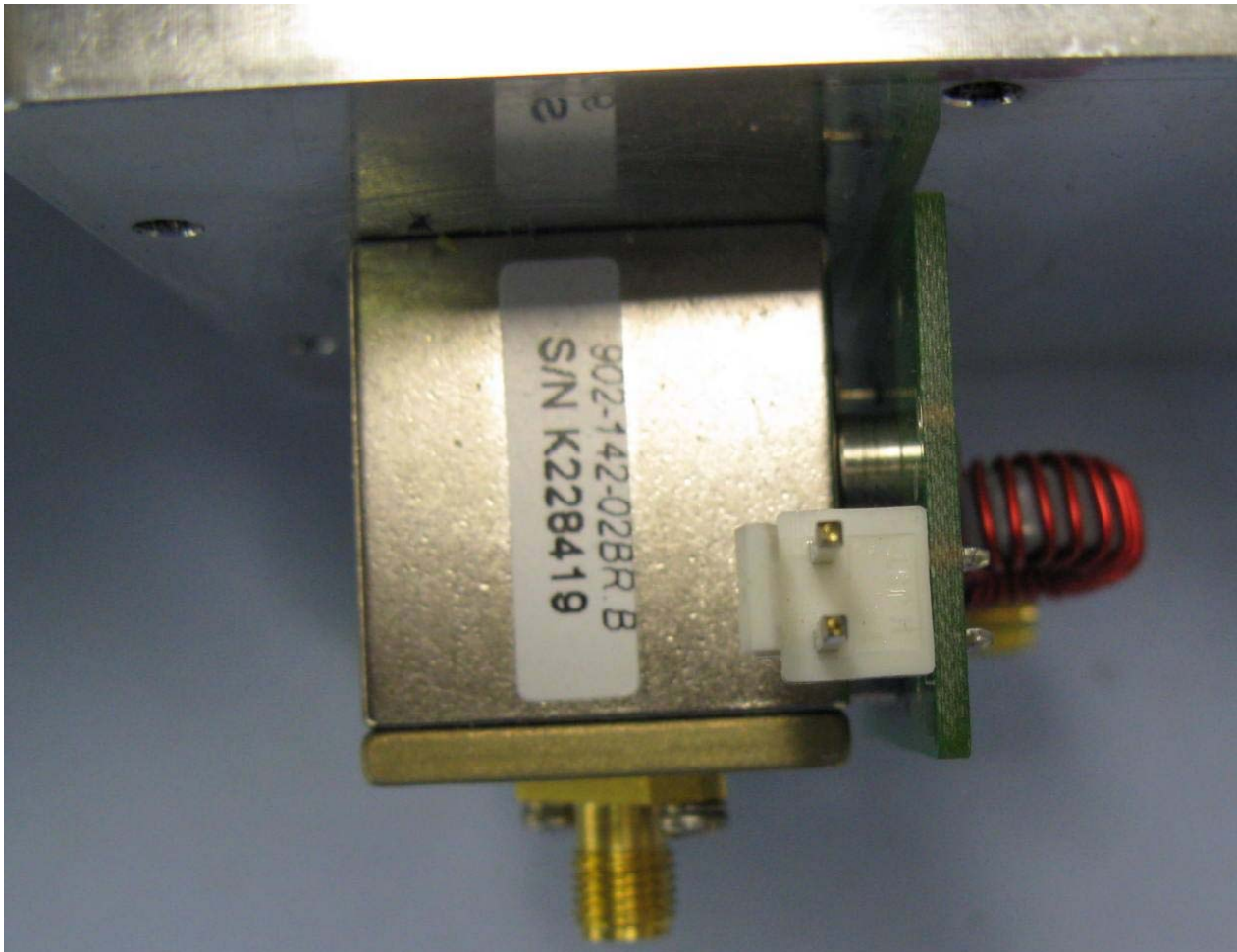


Figure 20 Diplexer on Front Panel-5

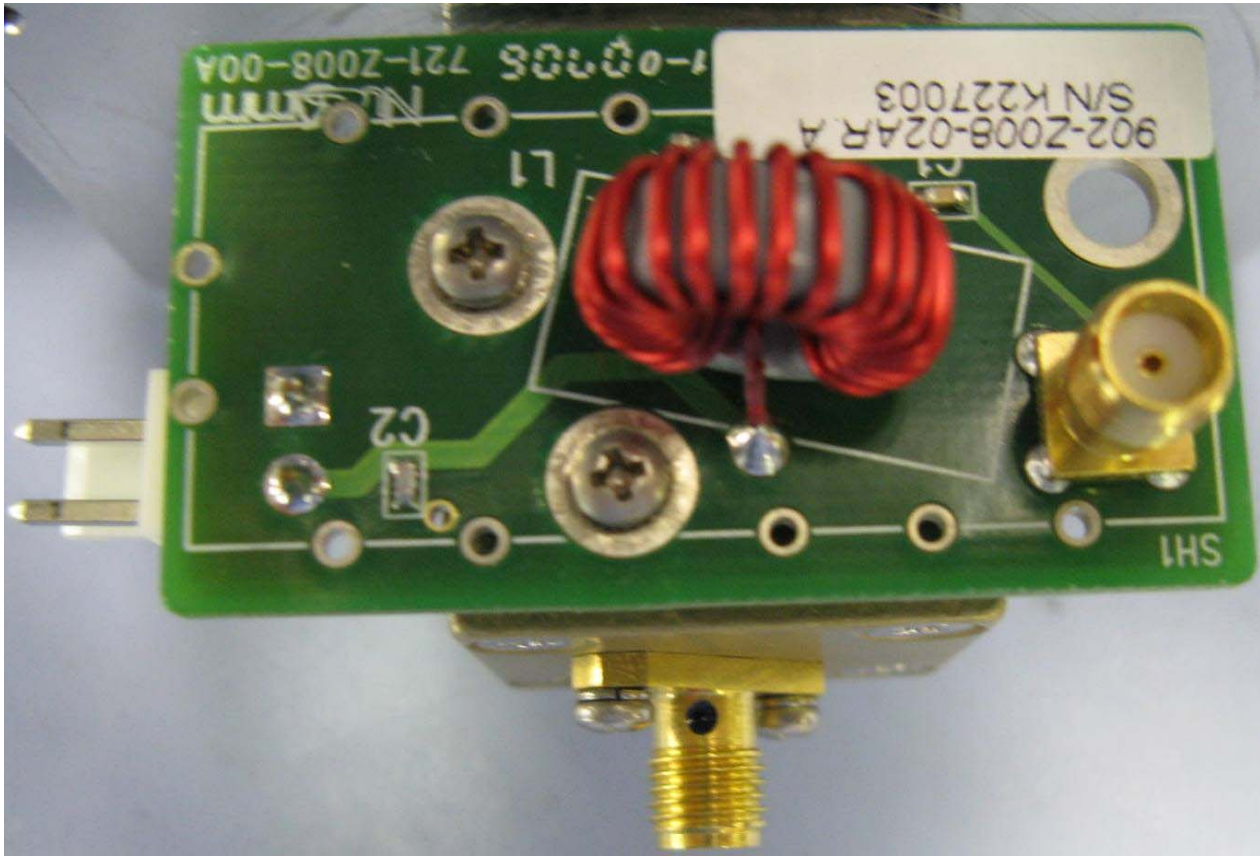


Figure 21 Diplexer on Front Panel-6

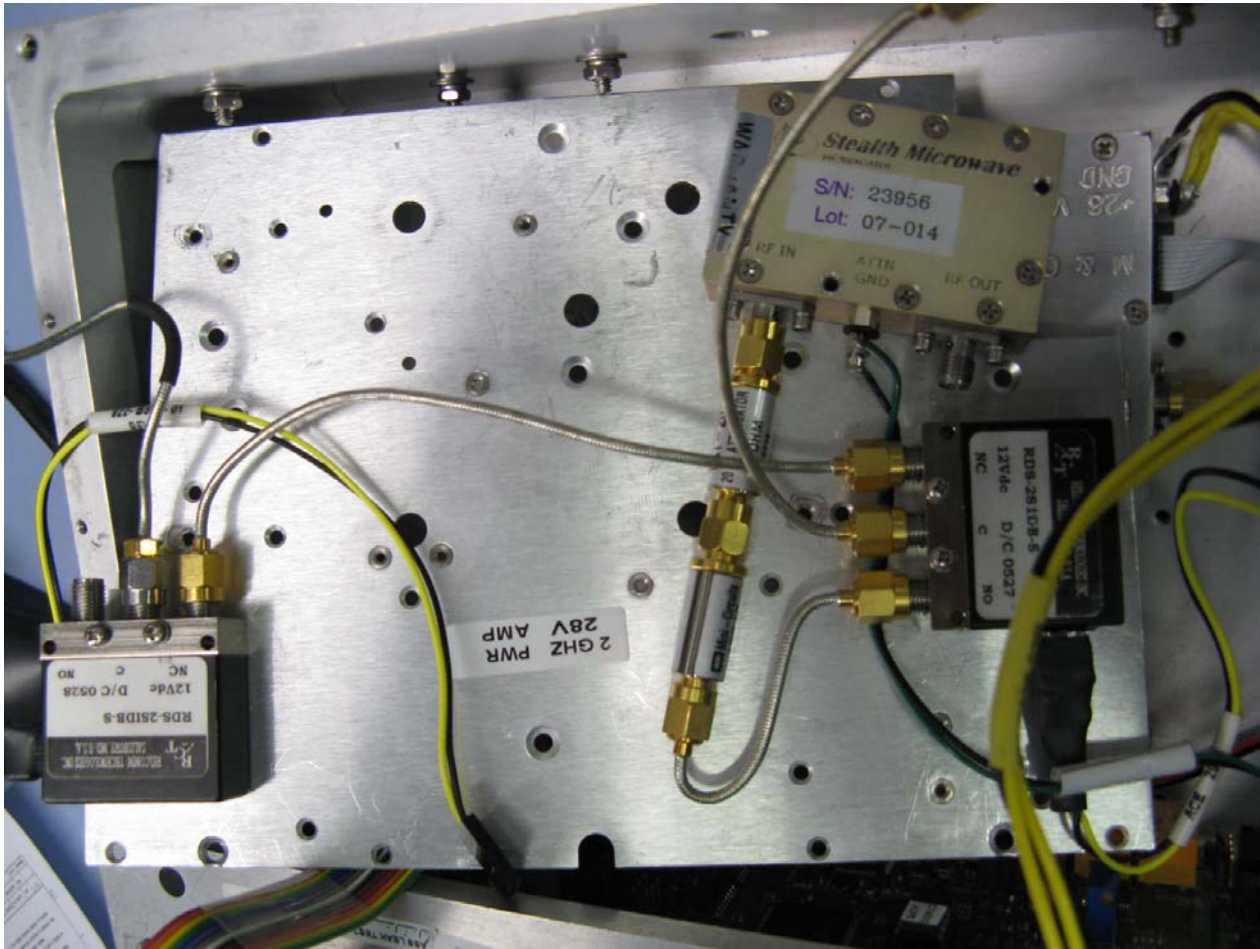


Figure 22 Power Amp and Relays Mounting Plate



Figure 23 Mounting Plate



Figure 24 High Power AMP Mounted

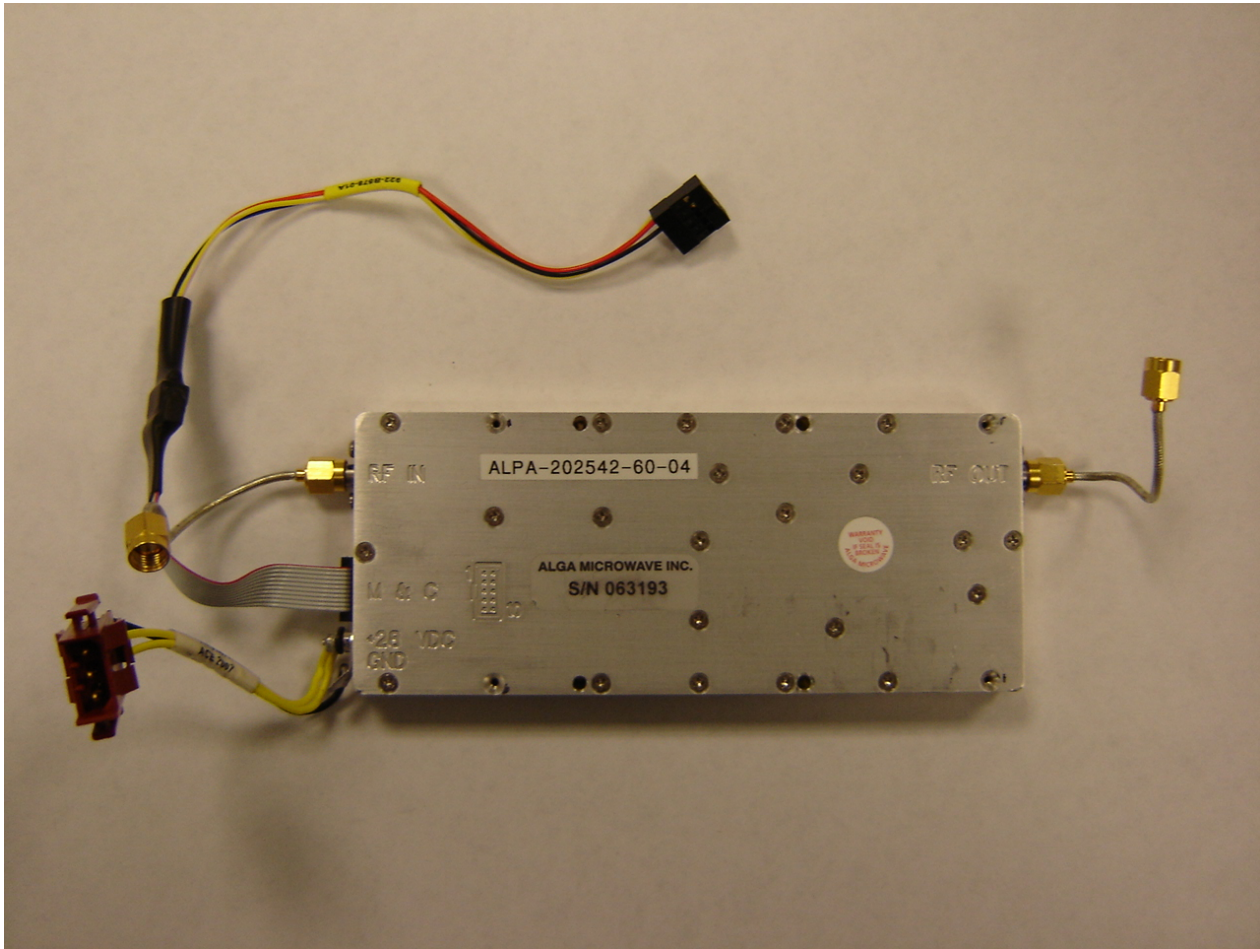


Figure 25 High Power AMP

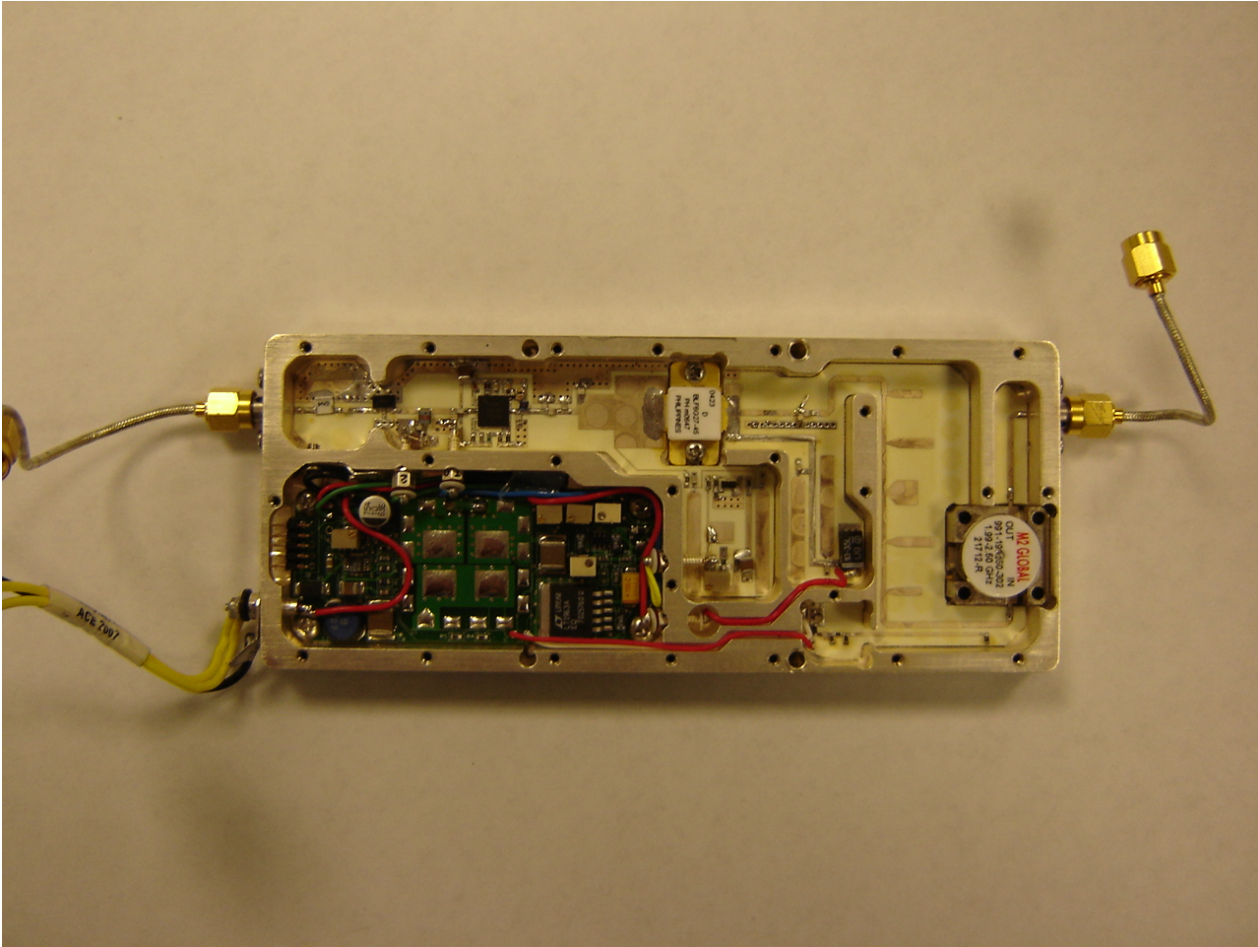


Figure 26 High Power AMP Inside View