

# ANTENNA SPECIFICATION

Model name : GC300-RX Antenna

1 , Frequency Range : 2402MHz - 2480MHz

2 , Channel Number : 79

3 , Channel Frequency : 2402MHz+K MHz (K=0,1,2,... ,78)

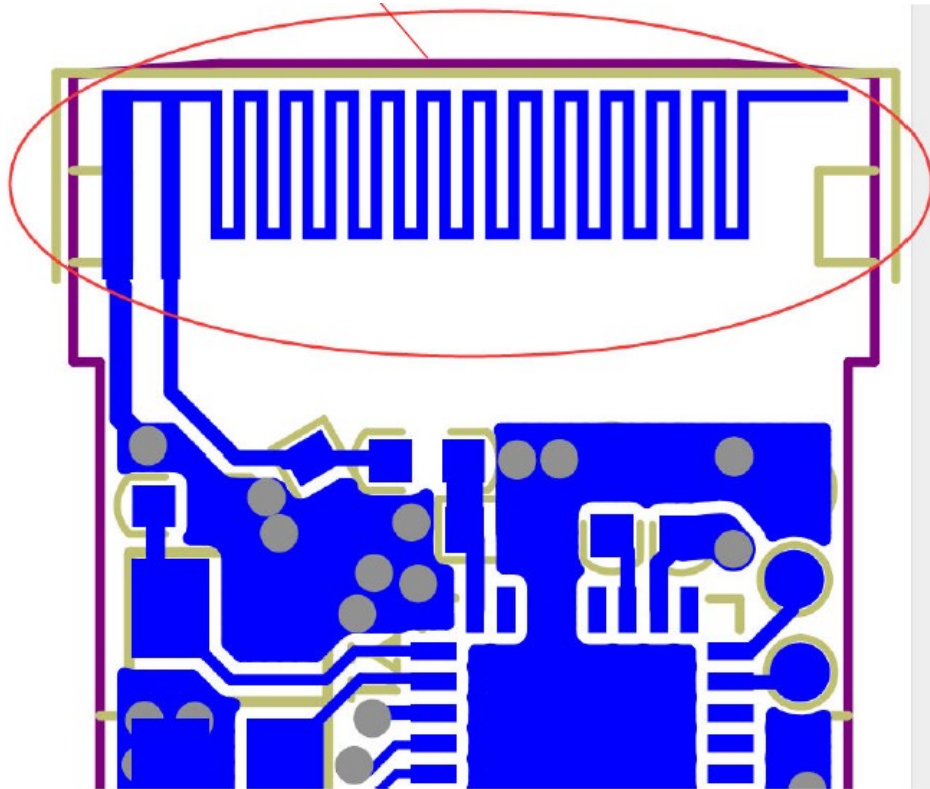
4 , RF Output Power : 0 dbi

5 , Type of Modulation : GFSK

6 , Antenna Specification : Meander Line PCB Antenna

7 , Manufacturer : Eastport

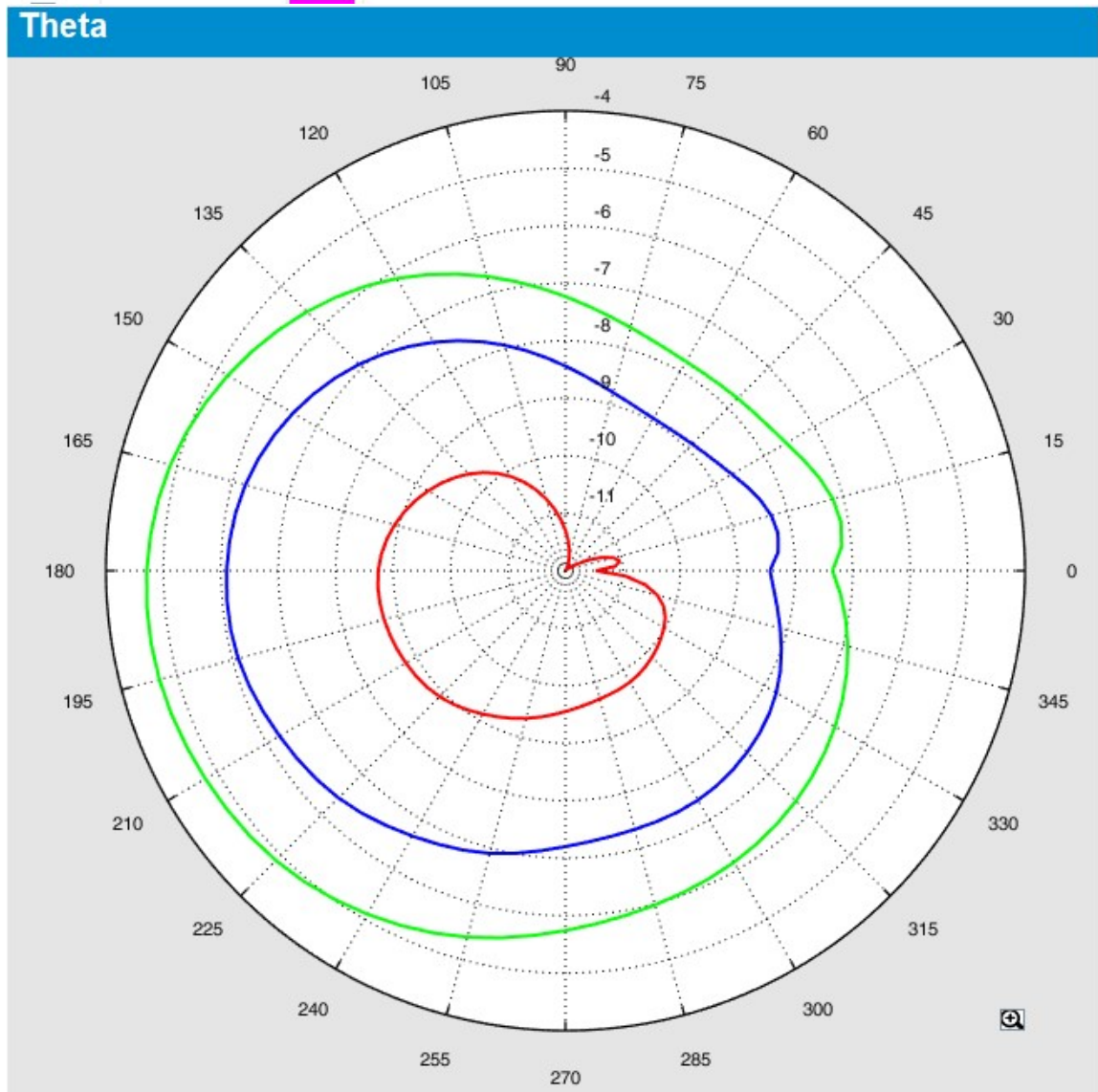
Center Frequency	Horizontal			Vertical		
	2400MHz	2450MHz	2500MHz	2400MHz	2450MHz	2500MHz
	0.00	-2.31	-0.83	-2.05	-1.31	-0.73
MAX. Gain	0 dBi					
Polarization	Horizontal and Vertical					



Dongle RF Antenna

**Horizontal:**

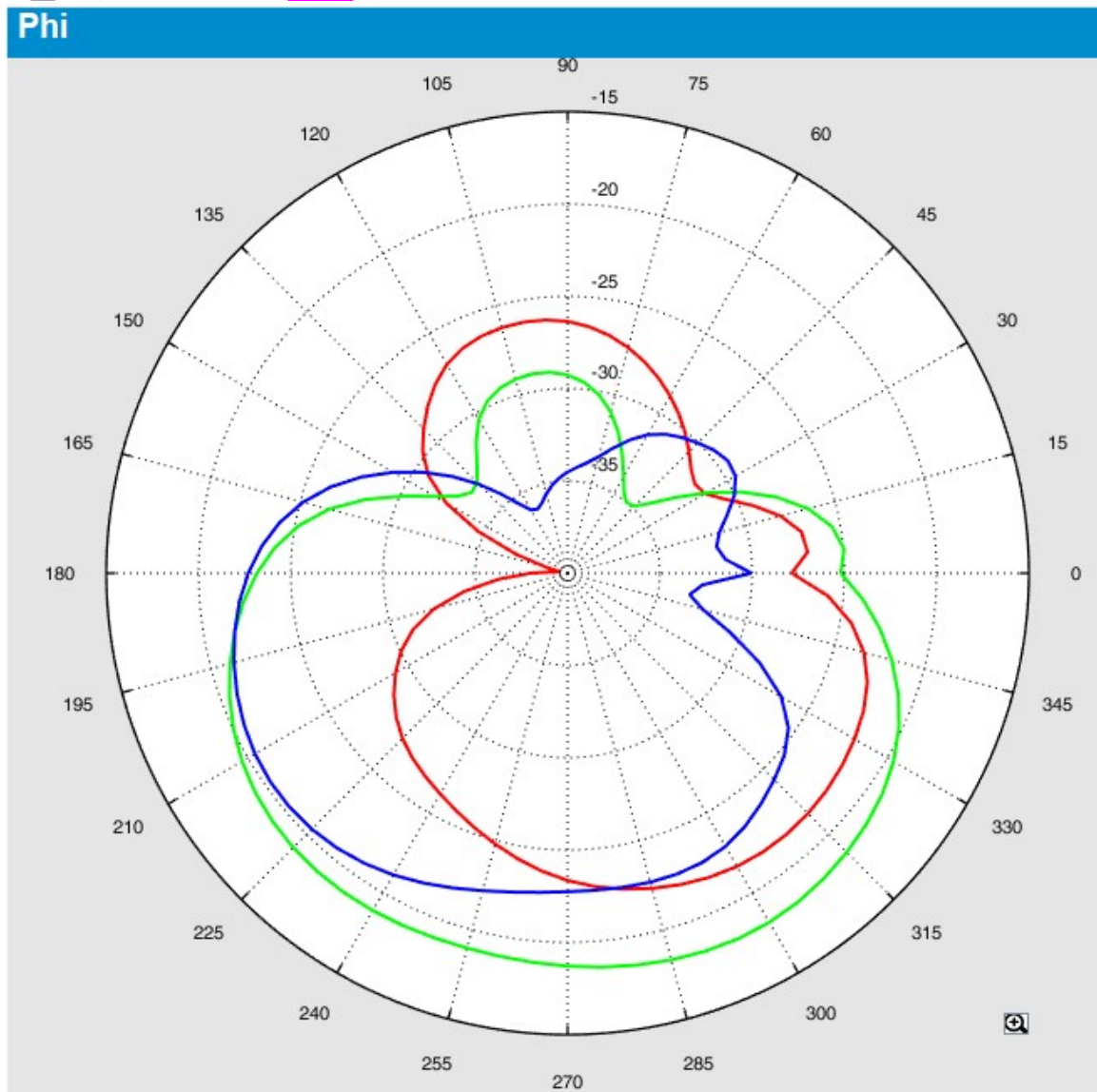
<input checked="" type="checkbox"/>	2.4GHz	000
<input checked="" type="checkbox"/>	2.45GHz	000
<input checked="" type="checkbox"/>	2.5GHz	000



Frequency (MHz)	Gain (dBi)		
	Max.	Min.	Avg.
2400	0.00	-11.875	-8.558
2450	-2.313	-13.008	-7.852
2500	-0.832	-8.258	-5.315

**Vertical:**

<input checked="" type="checkbox"/>	2.4GHz	000
<input checked="" type="checkbox"/>	2.45GHz	000
<input checked="" type="checkbox"/>	2.5GHz	000



Frequency (MHz)	Gain (dBi)		
	Max.	Min.	Avg.
2400	-2.052	-8.234	-6.533
2450	-1.312	-7.251	-5.186
2500	-0.735	-9.595	-6.138