

System Check_B750_170507

DUT: Dipole:750 MHz; D750V3;SN:1078

Communication System: CW; Frequency: 750 MHz;Duty Cycle: 1:1

Medium: B750_0507 Medium parameters used: $f = 750 \text{ MHz}$; $\sigma = 0.974 \text{ S/m}$; $\epsilon_r = 55.974$; $\rho = 1000 \text{ kg/m}^3$

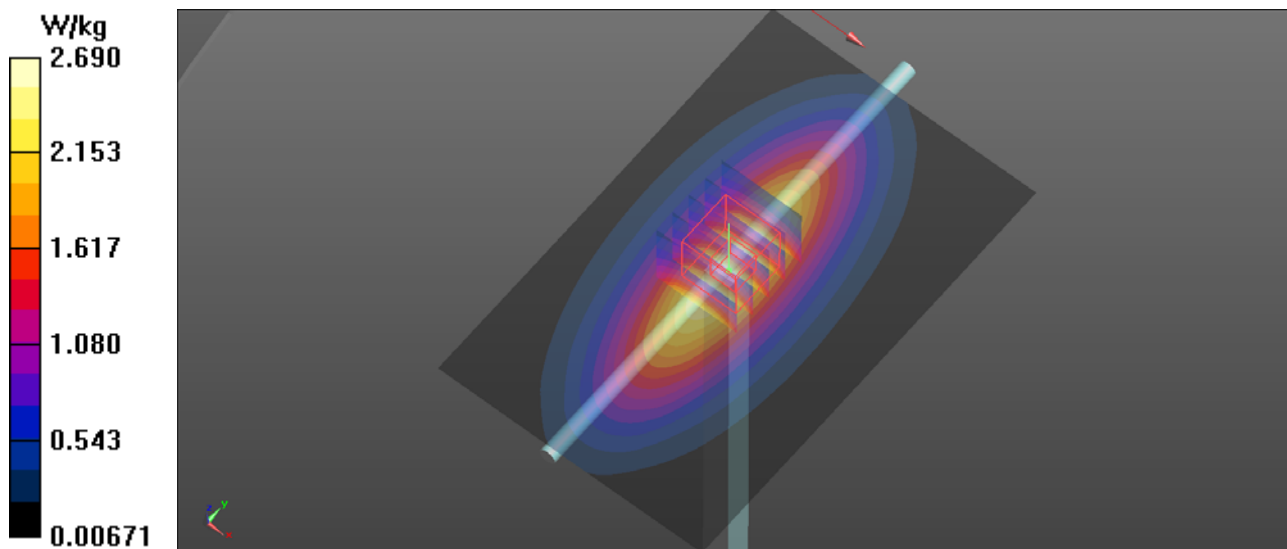
Ambient Temperature : 23.1 °C; Liquid Temperature : 22.3 °C

DASY5 Configuration:

- Probe: EX3DV4 - SN3970; ConvF(10.05, 10.05, 10.05); Calibrated: 2016/09/07;
- Sensor-Surface: 1.4mm (Mechanical Surface Detection)
- Electronics: DAE4 Sn1418; Calibrated: 2016/09/05
- Phantom: ELI v5.0; Type: QDOVA002AA; Serial: TP:1231
- Measurement SW: DASY52, Version 52.8 (7); SEMCAD X Version 14.6.10 (7164)

Pin=250mW/Area Scan (71x111x1): Interpolated grid: $dx=1.500 \text{ mm}$, $dy=1.500 \text{ mm}$
Maximum value of SAR (interpolated) = 2.69 W/kg

Pin=250mW/Zoom Scan (5x5x7)/Cube 0: Measurement grid: $dx=8\text{mm}$, $dy=8\text{mm}$, $dz=5\text{mm}$
Reference Value = 52.029 V/m; Power Drift = 0.03 dB
Peak SAR (extrapolated) = 3.06 W/kg
SAR(1 g) = 2.15 W/kg; SAR(10 g) = 1.46 W/kg
Maximum value of SAR (measured) = 2.66 W/kg



System Check_B835_170508

DUT: Dipole:835 MHz; Type:D835V2; SN:4d029

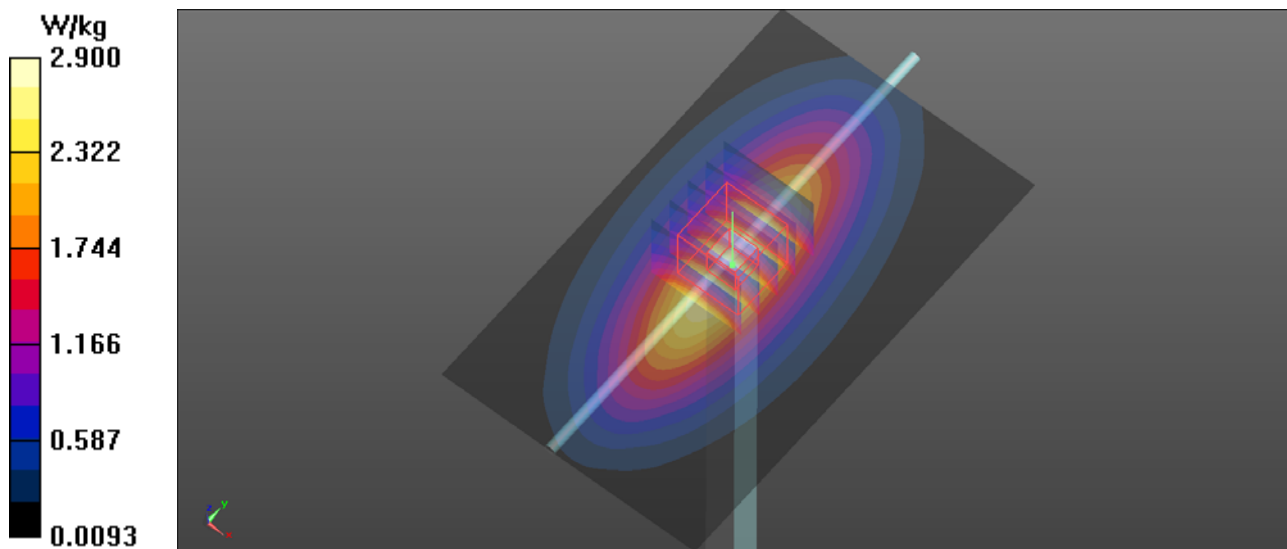
Communication System: CW; Frequency: 835 MHz;Duty Cycle: 1:1
Medium: B835_0508 Medium parameters used: $f = 835 \text{ MHz}$; $\sigma = 0.993 \text{ S/m}$; $\epsilon_r = 57.127$; $\rho = 1000 \text{ kg/m}^3$
Ambient Temperature : 22.9 °C ; Liquid Temperature : 21.9 °C

DASY5 Configuration:

- Probe: EX3DV4 - SN3970; ConvF(9.94, 9.94, 9.94); Calibrated: 2016/09/07;
- Sensor-Surface: 1.4mm (Mechanical Surface Detection)
- Electronics: DAE4 Sn1418; Calibrated: 2016/09/05
- Phantom: ELI v5.0; Type: QDOVA002AA; Serial: TP:1231
- Measurement SW: DASY52, Version 52.8 (7); SEMCAD X Version 14.6.10 (7164)

Pin=250mW/Area Scan (61x101x1): Interpolated grid: $dx=1.500 \text{ mm}$, $dy=1.500 \text{ mm}$
Maximum value of SAR (interpolated) = 2.90 W/kg

Pin=250mW/Zoom Scan (5x5x7)/Cube 0: Measurement grid: $dx=8\text{mm}$, $dy=8\text{mm}$, $dz=5\text{mm}$
Reference Value = 55.959 V/m; Power Drift = -0.01 dB
Peak SAR (extrapolated) = 3.36 W/kg
SAR(1 g) = 2.32 W/kg; SAR(10 g) = 1.55 W/kg
Maximum value of SAR (measured) = 2.90 W/kg



System Check_B1750_170509

DUT: Dipole 1750 MHz;Type:D1750V2; SN:1023

Communication System: CW; Frequency: 1750 MHz;Duty Cycle: 1:1

Medium: B1750_0509 Medium parameters used: $f = 1750$ MHz; $\sigma = 1.463$ S/m; $\epsilon_r = 54.642$; $\rho = 1000$ kg/m³

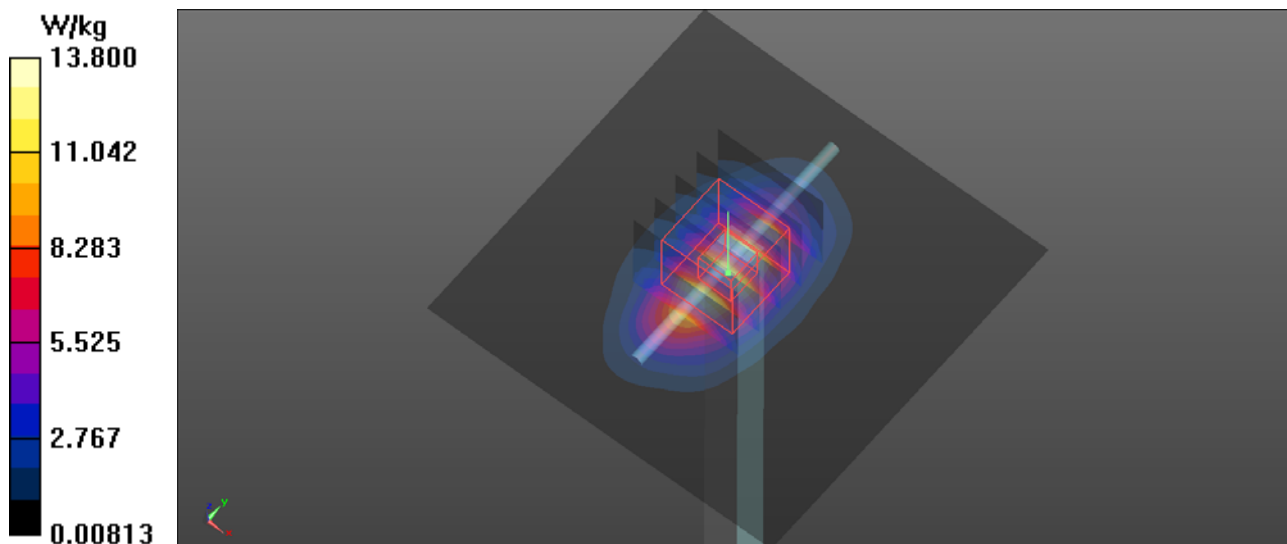
Ambient Temperature : 22.7 °C ; Liquid Temperature : 21.8 °C

DASY5 Configuration:

- Probe: EX3DV4 - SN3970; ConvF(8.17, 8.17, 8.17); Calibrated: 2016/09/07;
- Sensor-Surface: 1.4mm (Mechanical Surface Detection)
- Electronics: DAE4 Sn1418; Calibrated: 2016/09/05
- Phantom: ELI v5.0; Type: QDOVA002AA; Serial: TP:1231
- Measurement SW: DASY52, Version 52.8 (7); SEMCAD X Version 14.6.10 (7164)

Pin=250mW/Area Scan (71x71x1): Interpolated grid: dx=1.500 mm, dy=1.500 mm
Maximum value of SAR (interpolated) = 13.8 W/kg

Pin=250mW/Zoom Scan (5x5x7)/Cube 0: Measurement grid: dx=8mm, dy=8mm, dz=5mm
Reference Value = 93.612 V/m; Power Drift = 0.11 dB
Peak SAR (extrapolated) = 16.7 W/kg
SAR(1 g) = 9.57 W/kg; SAR(10 g) = 5.15 W/kg
Maximum value of SAR (measured) = 14.4 W/kg



System Check_B1900_170510

DUT: Dipole: 1900MHz;Type:D1900V2; SN:5d018

Communication System: CW; Frequency: 1900 MHz;Duty Cycle: 1:1

Medium: B1900_0510 Medium parameters used: $f = 1900$ MHz; $\sigma = 1.517$ S/m; $\epsilon_r = 53.685$; $\rho = 1000$ kg/m³

Ambient Temperature : 22.8 °C; Liquid Temperature : 21.9 °C

DASY5 Configuration:

- Probe: EX3DV4 - SN3970; ConvF(8.17, 8.17, 8.17); Calibrated: 2016/09/07;
- Sensor-Surface: 1.4mm (Mechanical Surface Detection)
- Electronics: DAE4 Sn1418; Calibrated: 2016/09/05
- Phantom: ELI v5.0; Type: QDOVA002AA; Serial: TP:1231
- Measurement SW: DASY52, Version 52.8 (7); SEMCAD X Version 14.6.10 (7164)

Pin=250mW/Area Scan (71x71x1): Interpolated grid: dx=1.500 mm, dy=1.500 mm

Maximum value of SAR (interpolated) = 15.4 W/kg

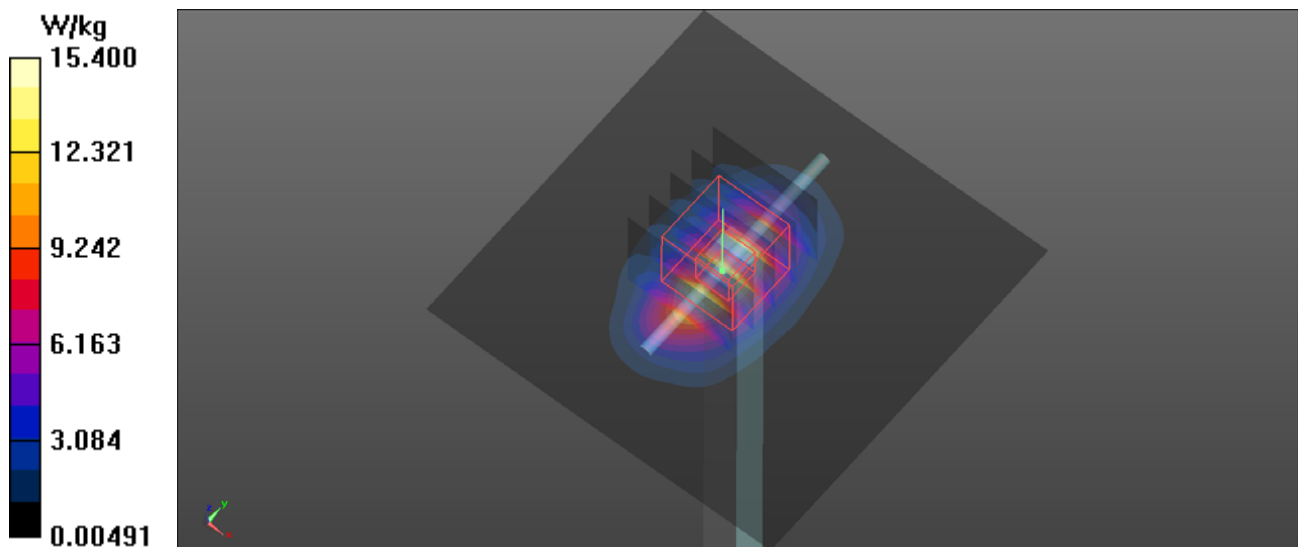
Pin=250mW/Zoom Scan (5x5x7)/Cube 0: Measurement grid: dx=8mm, dy=8mm, dz=5mm

Reference Value = 95.227 V/m; Power Drift = 0.13 dB

Peak SAR (extrapolated) = 18.6 W/kg

SAR(1 g) = 10.5 W/kg; SAR(10 g) = 5.46 W/kg

Maximum value of SAR (measured) = 15.9 W/kg



System Check_B2300_170511

DUT: Dipole 2300 MHz;Type:D2300V2; SN:1053

Communication System: CW; Frequency: 2300 MHz;Duty Cycle: 1:1

Medium: B2300_0511 Medium parameters used: $f = 2300$ MHz; $\sigma = 1.801$ S/m; $\epsilon_r = 52.651$; $\rho = 1000$ kg/m³

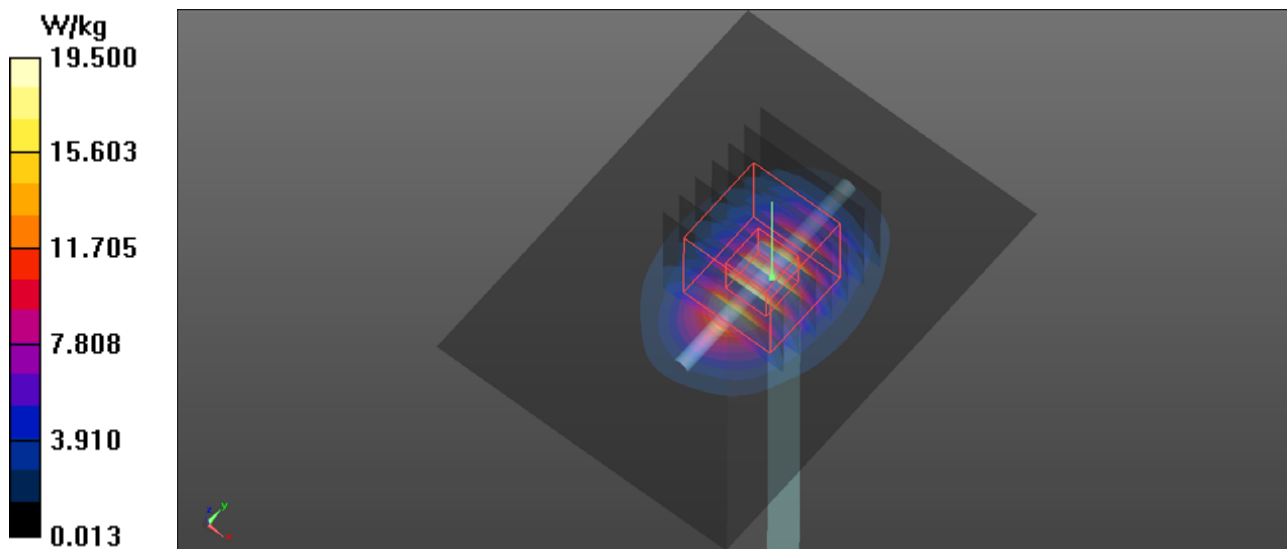
Ambient Temperature : 23.2 °C ; Liquid Temperature : 22.0 °C

DASY5 Configuration:

- Probe: EX3DV4 - SN3970; ConvF(7.9, 7.9, 7.9); Calibrated: 2016/09/07;
- Sensor-Surface: 1.4mm (Mechanical Surface Detection)
- Electronics: DAE4 Sn1418; Calibrated: 2016/09/05
- Phantom: ELI v5.0; Type: QDOVA002AA; Serial: TP:1231
- Measurement SW: DASY52, Version 52.8 (7); SEMCAD X Version 14.6.10 (7164)

Pin=250mW/Area Scan (61x81x1): Interpolated grid: dx=1.200 mm, dy=1.200 mm
Maximum value of SAR (interpolated) = 19.5 W/kg

Pin=250mW/Zoom Scan (7x7x7)/Cube 0: Measurement grid: dx=5mm, dy=5mm, dz=5mm
Reference Value = 97.955 V/m; Power Drift = 0.01 dB
Peak SAR (extrapolated) = 20.9 W/kg
SAR(1 g) = 11.8 W/kg; SAR(10 g) = 5.61 W/kg
Maximum value of SAR (measured) = 17.8 W/kg



System Check_B2450_170512

DUT: Dipole 2450 MHz; Type:D2450V2; SN:835

Communication System: CW; Frequency: 2450 MHz;Duty Cycle: 1:1

Medium: B2450_0512 Medium parameters used: $f = 2450$ MHz; $\sigma = 1.985$ S/m; $\epsilon_r = 54.284$; $\rho = 1000$ kg/m³

Ambient Temperature : 23.1 °C ; Liquid Temperature : 22.1 °C

DASY5 Configuration:

- Probe: EX3DV4 - SN3970; ConvF(7.57, 7.57, 7.57); Calibrated: 2016/09/07;
- Sensor-Surface: 1.4mm (Mechanical Surface Detection)
- Electronics: DAE4 Sn1418; Calibrated: 2016/09/05
- Phantom: ELI v5.0; Type: QDOVA002AA; Serial: TP:1231
- Measurement SW: DASY52, Version 52.8 (7); SEMCAD X Version 14.6.10 (7164)

Pin=250mW/Area Scan (61x81x1): Interpolated grid: dx=1.200 mm, dy=1.200 mm

Maximum value of SAR (interpolated) = 22.3 W/kg

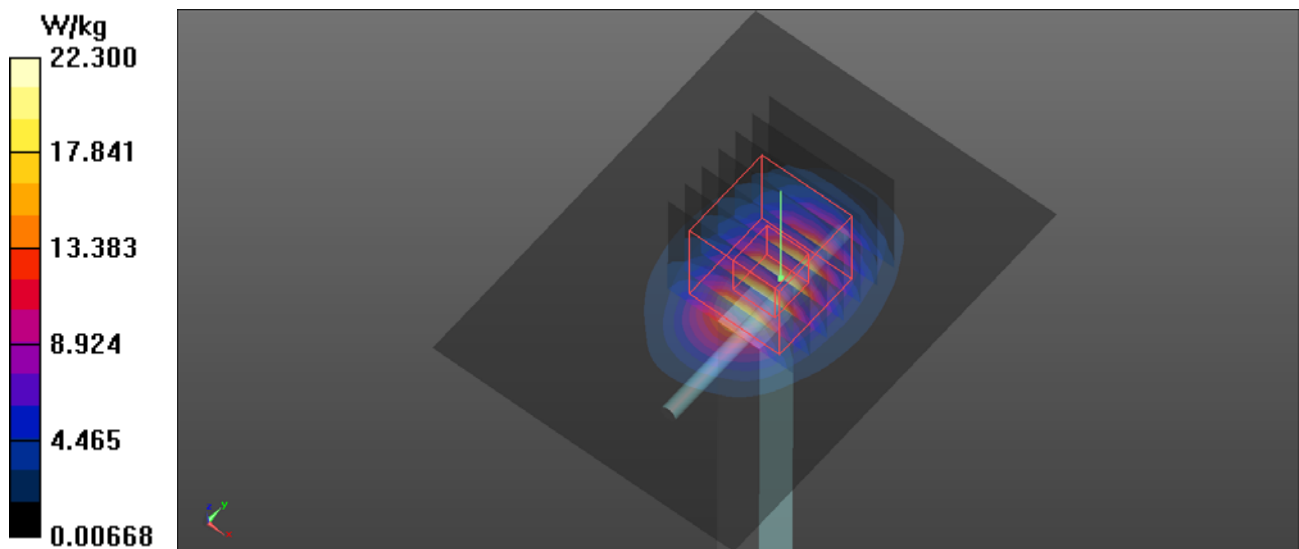
Pin=250mW/Zoom Scan (7x7x7)/Cube 0: Measurement grid: dx=5mm, dy=5mm, dz=5mm

Reference Value = 94.887 V/m; Power Drift = 0.01 dB

Peak SAR (extrapolated) = 27.1 W/kg

SAR(1 g) = 13.1 W/kg; SAR(10 g) = 6.09 W/kg

Maximum value of SAR (measured) = 21.8 W/kg



System Check_B2600_170513

DUT: Dipole 2600 MHz; Type:D2600V2; SN:1058

Communication System: CW; Frequency: 2600 MHz;Duty Cycle: 1:1

Medium: B2600_0513 Medium parameters used: $f = 2600$ MHz; $\sigma = 2.21$ S/m; $\epsilon_r = 52.42$; $\rho = 1000$ kg/m³

Ambient Temperature : 23.2 °C ; Liquid Temperature : 22.4 °C

DASY5 Configuration:

- Probe: EX3DV4 - SN3970; ConvF(7.41, 7.41, 7.41); Calibrated: 2016/09/07;
- Sensor-Surface: 1.4mm (Mechanical Surface Detection)
- Electronics: DAE4 Sn1418; Calibrated: 2016/09/05
- Phantom: ELI v5.0; Type: QDOVA002AA; Serial: TP:1231
- Measurement SW: DASY52, Version 52.8 (7); SEMCAD X Version 14.6.10 (7164)

Pin=250mW/Area Scan (61x81x1): Interpolated grid: dx=1.200 mm, dy=1.200 mm

Maximum value of SAR (interpolated) = 24.1 W/kg

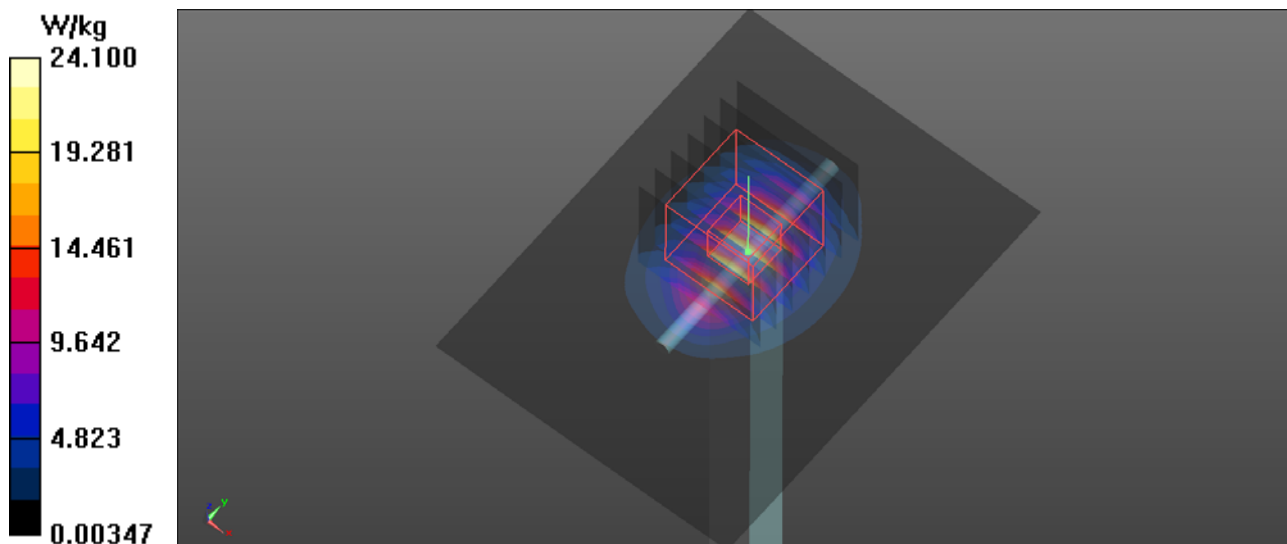
Pin=250mW/Zoom Scan (7x7x7)/Cube 0: Measurement grid: dx=5mm, dy=5mm, dz=5mm

Reference Value = 89.153 V/m; Power Drift = 0.05 dB

Peak SAR (extrapolated) = 29.3 W/kg

SAR(1 g) = 13.4 W/kg; SAR(10 g) = 5.95 W/kg

Maximum value of SAR (measured) = 23.2 W/kg



System Check_B5300_170515

DUT: Dipole D5GHzV2; Type:D5GHzV2; SN:1040

Communication System: CW; Frequency: 5300 MHz;Duty Cycle: 1:1

Medium: B5G_0515 Medium parameters used: $f = 5300$ MHz; $\sigma = 5.423$ S/m; $\epsilon_r = 49.055$; $\rho = 1000$ kg/m³

Ambient Temperature : 23.2 °C ; Liquid Temperature : 22.1 °C

DASY5 Configuration:

- Probe: EX3DV4 - SN3970; ConvF(4.75, 4.75, 4.75); Calibrated: 2016/09/07;
- Sensor-Surface: 1.4mm (Mechanical Surface Detection)
- Electronics: DAE4 Sn1418; Calibrated: 2016/09/05
- Phantom: ELI v5.0; Type: QDOVA002AA; Serial: TP:1231
- Measurement SW: DASY52, Version 52.8 (7); SEMCAD X Version 14.6.10 (7164)

Pin=100mW/Area Scan (91x91x1): Interpolated grid: dx=1.000 mm, dy=1.000 mm

Maximum value of SAR (interpolated) = 16.5 W/kg

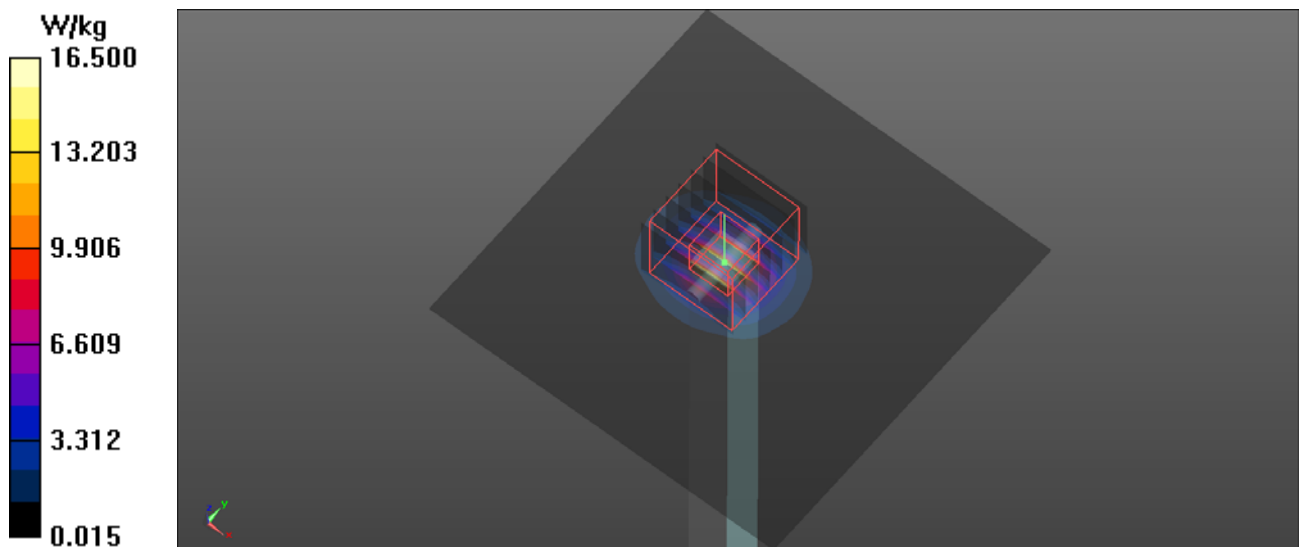
Pin=100mW/Zoom Scan (7x7x12)/Cube 0: Measurement grid: dx=4mm, dy=4mm, dz=2mm

Reference Value = 46.635 V/m; Power Drift = 0.08 dB

Peak SAR (extrapolated) = 27.9 W/kg

SAR(1 g) = 7.65 W/kg; SAR(10 g) = 2.15 W/kg

Maximum value of SAR (measured) = 17.3 W/kg



System Check_B5600_170515

DUT: Dipole D5GHzV2; Type:D5GHzV2; SN:1040

Communication System: CW; Frequency: 5600 MHz;Duty Cycle: 1:1

Medium: B5G_0515 Medium parameters used: $f = 5600$ MHz; $\sigma = 5.891$ S/m; $\epsilon_r = 48.474$; $\rho = 1000$ kg/m³

Ambient Temperature : 23.2 °C ; Liquid Temperature : 22.1 °C

DASY5 Configuration:

- Probe: EX3DV4 - SN3970; ConvF(4.22, 4.22, 4.22); Calibrated: 2016/09/07;
- Sensor-Surface: 1.4mm (Mechanical Surface Detection)
- Electronics: DAE4 Sn1418; Calibrated: 2016/09/05
- Phantom: ELI v5.0; Type: QDOVA002AA; Serial: TP:1231
- Measurement SW: DASY52, Version 52.8 (7); SEMCAD X Version 14.6.10 (7164)

Pin=100mW/Area Scan (91x91x1): Interpolated grid: dx=1.000 mm, dy=1.000 mm

Maximum value of SAR (interpolated) = 19.5 W/kg

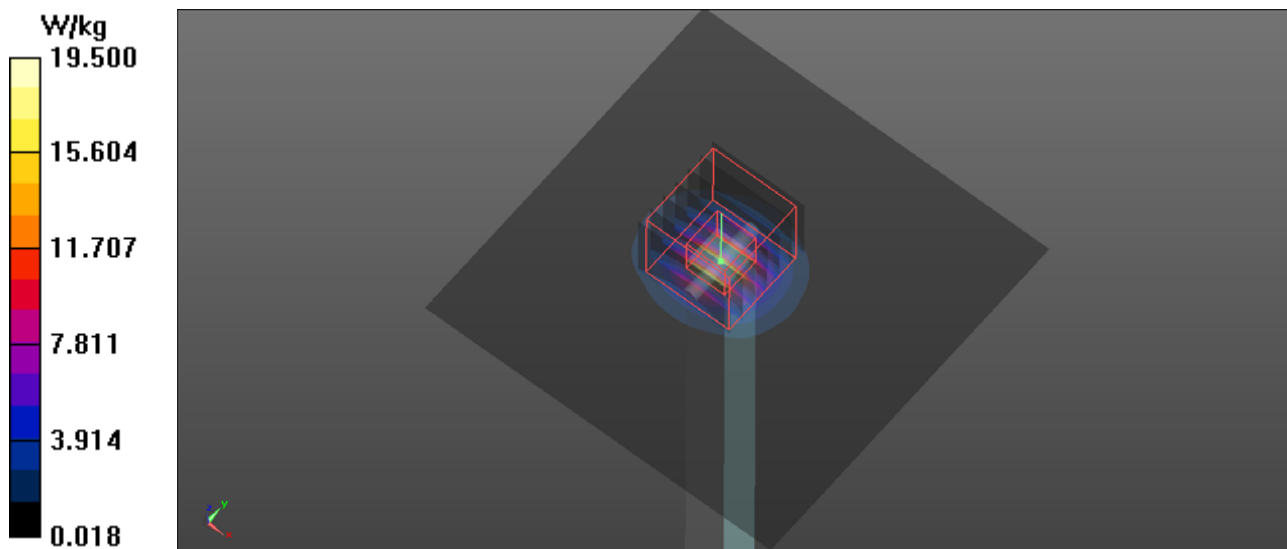
Pin=100mW/Zoom Scan (7x7x12)/Cube 0: Measurement grid: dx=4mm, dy=4mm, dz=2mm

Reference Value = 50.107 V/m; Power Drift = 0.15 dB

Peak SAR (extrapolated) = 31.1 W/kg

SAR(1 g) = 7.86 W/kg; SAR(10 g) = 2.21 W/kg

Maximum value of SAR (measured) = 20.4 W/kg



System Check_B5800_170515

DUT: Dipole D5GHzV2; Type:D5GHzV2; SN:1040

Communication System: CW; Frequency: 5800 MHz;Duty Cycle: 1:1

Medium: B5G_0515 Medium parameters used: $f = 5800$ MHz; $\sigma = 6.148$ S/m; $\epsilon_r = 47.973$; $\rho = 1000$ kg/m³

Ambient Temperature : 23.2 °C ; Liquid Temperature : 22.1 °C

DASY5 Configuration:

- Probe: EX3DV4 - SN3970; ConvF(4.34, 4.34, 4.34); Calibrated: 2016/09/07;
- Sensor-Surface: 1.4mm (Mechanical Surface Detection)
- Electronics: DAE4 Sn1418; Calibrated: 2016/09/05
- Phantom: ELI v5.0; Type: QDOVA002AA; Serial: TP:1231
- Measurement SW: DASY52, Version 52.8 (7); SEMCAD X Version 14.6.10 (7164)

Pin=100mW/Area Scan (91x91x1): Interpolated grid: dx=1.000 mm, dy=1.000 mm
Maximum value of SAR (interpolated) = 18.7 W/kg

Pin=100mW/Zoom Scan (7x7x12)/Cube 0: Measurement grid: dx=4mm, dy=4mm, dz=2mm
Reference Value = 48.714 V/m; Power Drift = 0.13 dB
Peak SAR (extrapolated) = 35.6 W/kg
SAR(1 g) = 7.54 W/kg; SAR(10 g) = 2.09 W/kg
Maximum value of SAR (measured) = 20.5 W/kg

