

MSI FS510 (MS-6872)

Bluetooth Stereo Headphone

User's Manual



Hiermit erklärt **Micro Star International CO., LTD** dass sich dieses Produkt in Übereinstimmung mit den grundlegenden Anforderungen und den anderen relevanten Vorschriften der Richtlinie 1999/5/EG befindet. Die Konformitätserklärung kann auf folgender website eingesehen werden:
http://www.msi-computer.de/support/dl_man.php

Hereby, **Micro Star International CO., LTD** declares that this device is in compliance with the essential requirements and other relevant provisions of Directive 1999/5/EC. The respective Declaration of conformity can be found online:

http://www.msi-computer.de/support/dl_man.php
IEEE 802.11b/g and Bluetooth® 2.4 GHz operation

Europe: Frequencies: 2.400 – 2.4835 GHz

France: Frequencies: 2.4465– 2.4835 GHz,

Outdoor use is limited to 10mW e.i.r.p. within the band 2454-2483.5 MHz

IEEE 802.11b/g und Bluetooth® 2.4 GHz Betrieb

Europa: Frequenzen: 2.400 – 2.4835 GHz

Frankreich: Frequenzen: 2.4465– 2.4835 GHz,

Außerhalb von geschlossenen Gebäuden ist die genehmigte Sendeleistung im Frequenzband 2454-2483.5 MHz auf maximal 10mW beschränkt.

Italy:

If used outside of own premises, general authorisation is required.

Luxembourg:

General authorisation required for public service.

Notified Countries:

Germany, UK, Netherlands, Belgium, Sweden, Denmark, Finland, France, Italy, Spain, Austria, Ireland, Portugal, Greece, Luxembourg, Estonia, Letvia, Lithuania, Czech Republic, Slovakia , Slovenia, Hungary, Poland und Malta.

Bestimmungsgemäße Verwendung:

Dieses Produkt integriert als Teil der Produktausstattung eine WLAN-Komponente und/oder eine Bluetooth®-Komponente.

Die entsprechende Komponente verbindet Computer über eine Funkverbindung .

Es kann auch eine Funkverbindung zu anderen geeigneten WLAN- oder Bluetooth® Geräten hergestellt werden.

Prescribed use:

This product integrates a WLAN- and/or Bluetooth® device.

The device sets up a radio link between to computer. In addition it is possible to link the WLAN- or Bluetooth® device to any other WLAN- or Bluetooth® device which stick to the IEEE 802.11b/g or Bluetooth® requirements.

Hinweise zur Reichweite:

Der Abstand zwischen Sender und Empfänger (von einem WLAN- oder Bluetooth®-Gerät zu einem entsprechenden anderen Gerät) hängt stark von der Einsatzumgebung ab. Wände, Betonboden (Eisen), beschichtete Fensterscheiben, Fahrzeug-Karosserie, etc..

Weitere Beeinflussungen:

- Hochfrequenzaussendungen jeder Art
- Gebäude, Böume, etc.
- Heizkörper, Stahlbeton, etc.
- offen betriebene Computer, etc.
- Mikrowellenherde, etc.

Die Kommunikation zwischen unterschiedlichen WLAN- oder Bluetooth® - Geräten ist von der jeweiligen Software und dem entsprechenden Versionsstand abhängig

Operating range:

The transmission range between different WLAN- or Bluetooth® devices varies depending the specific environment. Walls, concrete floor (iron), laminated windows, vehicle-body, etc..

More electromagnetic interferences:

- high frequency emission of any kind,
- Buildings, trees, etc.
- Heaters, ferroconcrete, etc.
- open computer systems, etc.
- Microwave oven, etc.

Communication (exchange data) is dependent on the software of the WLAN or Bluetooth® devices.

MSI Technology GmbH
Hanauer Landstraße 306
60314 Frankfurt
Telefon: +49 (0)69 40893-0
Telefax: +49 (0)69 40893-202

FCC Caution

1. The device complies with Part 15 of the FCC rules. Operation is subject to the following two conditions:
 - (1) This device may not cause harmful interference, and
 - (2) This device must accept any interference received, including interference that may cause undesired operation.
2. FCC RF Radiation Exposure Statement: The equipment complies with FCC RF radiation exposure limits set forth for an uncontrolled environment.
3. This Transmitter must not be co-located or operating in conjunction with any other antenna or transmitter.
4. Changes or modifications to this unit not expressly approved by the party responsible for compliance could void the user authority to operate the equipment.

Copyright Notice

The material in this document is the intellectual property of **MICRO-STAR INTERNATIONAL**. We take every care in the preparation of this document, but no guarantee is given as to the correctness of its contents. Our products are under continual improvement and we reserve the right to make changes without notice.

Trademarks

All trademarks used in this manual are the sole property of their respective owners. Microsoft Windows and Internet Explorer are registered trademark or trademarks of Microsoft Corporation.

Revision History

Revision	Revision History	Date
V 1.0	First Release	June 2006

FEDERAL COMMUNICATIONS COMMISSION INTERFERENCE STATEMENT

This equipment has been tested and found to comply with the limits for a Class B digital device, pursuant to Part 15 of the FCC Rules. These limits are designed to provide reasonable protection against harmful interference in a residential installation. This equipment generates, uses and can radiate radio frequency energy and, if not installed and used in accordance with the instructions, may cause harmful interference to radio communications. However, there is no guarantee that interference will not occur in a particular installation. If this equipment does cause harmful interference to radio or television reception, which can be determined by turning the equipment off and on, the user is encouraged to try to correct the interference by one or more of the following measures:

- Reorient or relocate the receiving antenna.
- Increase the separation between the equipment and receiver.
- Connect the equipment into an outlet on a circuit different from that to which the receiver is connected.
- Consult the dealer or an experienced radio/TV technician for help.

Industry Canada Warnings

Operation is subject to the following two conditions: (1) this device may not cause interference, and (2) this device must accept any interference, including interference that may cause undesired operation of the device.

Important Safety Precautions

Always read and follow these basic safety precautions carefully when handling any piece of electronic component.

1. Keep this *User's Manual* for future reference.
2. Keep this equipment away from humidity.
3. Lay this equipment on a reliable flat surface before setting it up.
4. The openings on the enclosure are for air convection hence protects the equipment from overheating.
5. All cautions and warnings on the equipment should be noted.
6. Never pour any liquid into the opening that could damage or cause electrical shock.
7. If any of the following situations arises, get the equipment checked by a service personnel:
 - ❑ Liquid has penetrated into the equipment
 - ❑ The equipment has been exposed to moisture
 - ❑ The equipment has not work well or you can not get it work according to User's Manual
 - ❑ The equipment has dropped and damaged
 - ❑ If the equipment has obvious sign of breakage
8. DO NOT LEAVE THIS EQUIPMENT IN AN ENVIRONMENT UNCONDITIONED, STORAGE TEMPERATURE ABOVE 100°C OR BELOW -20°C, IT MAY DAMAGE THE EQUIPMENT.

How to Use This Guide

This User's Guide provides instructions and illustrations on how to install and use your **MSI Stereo Headphone FS510**.

- Chapter 1, **Introduction**, provides a general information on the product you bought, including its application, specification, and requirements.
- Chapter 2, **Cell Phone Application**, tells you how to the product with your Bluetooth cell phone.
- Chapter 3, **PC Application**, guides you through the co-operate this product with your person computer.
- Chapter 4, **Frequently Asked Questions**, offers you questions you might encountered during usage or application of this product.

Please note that the setting diagrams or values in this guide are **FOR YOUR REFERENCE ONLY**. The actual settings and values depend on your system and network. If you are not sure about these information, please ask your network administrator or MIS staff for help.

Technical Support

- Visit the MSI website for FAQ, technical guide, driver and software updates, and other information: <http://www.msi.com.tw/>.
- Contact our technical staff at: support.msi.com.tw.

WEEE Statement



ENGLISH

To protect the global environment and as an environmentalist, MSI must remind you that...

Under the European Union ("EU") Directive on Waste Electrical and Electronic Equipment, Directive 2002/96/EC, which takes effect on August 13, 2005, products of "electrical and electronic equipment" cannot be discarded as municipal waste anymore and manufacturers of covered electronic equipment will be obligated to take back such products at the end of their useful life. MSI will comply with the product take back requirements at the end of life of MSI-branded products that are sold into the EU. You can return these products to local collection points.

DEUTSCH

Hinweis von MSI zur Erhaltung und Schutz unserer Umwelt

Gemäß der Richtlinie 2002/96/EG über Elektro- und Elektronik-Altgeräte dürfen Elektro- und Elektronik-Altgeräte nicht mehr als kommunale Abfälle entsorgt werden. MSI hat europaweit verschiedene Sammel- und Recyclingunternehmen beauftragt, die in die Europäische Union in Verkehr gebrachten Produkte, am Ende seines Lebenszyklus zurückzunehmen. Bitte entsorgen Sie dieses Produkt zum gegebenen Zeitpunkt ausschliesslich an einer lokalen Altgerätesammelstelle in Ihrer Nähe.

FRANÇAIS

En tant qu'écologiste et afin de protéger l'environnement, MSI tient à rappeler ceci...

Au sujet de la directive européenne (EU) relative aux déchets des équipement électriques et électroniques, directive 2002/96/EC, prenant effet le 13 août 2005, que les produits électriques et électroniques ne peuvent être déposés dans les décharges ou tout simplement mis à la poubelle. Les fabricants de ces équipements seront obligés de récupérer certains produits en fin de vie. MSI prendra en compte cette exigence relative au retour des produits en fin de vie au sein de la communauté européenne. Par conséquent vous pouvez retourner localement ces matériels dans les points de collecte.

РУССКИЙ

Компания MSI предпринимает активные действия по защите окружающей среды, поэтому напоминаем вам, что...

В соответствии с директивой Европейского Союза (ЕС) по предотвращению загрязнения окружающей среды использованным электрическим и электронным оборудованием (директива WEEE 2002/96/EC), вступающей в силу 13 августа 2005 года, изделия, относящиеся к электрическому и электронному оборудованию, не могут рассматриваться как бытовой мусор, поэтому производители вышеперечисленного электронного оборудования обязаны принимать его для переработки по окончании срока службы. MSI обязуется соблюдать требования по приему продукции, проданной под маркой MSI на территории ЕС, в переработку по окончании срока службы. Вы можете вернуть эти изделия в специализированные пункты приема.

ESPAÑOL

MSI como empresa comprometida con la protección del medio ambiente, recomienda:

Bajo la directiva 2002/96/EC de la Unión Europea en materia de desechos y/o equipos electrónicos, con fecha de rigor desde el 13 de agosto de 2005, los productos clasificados como "eléctricos y equipos electrónicos" no pueden ser depositados en los contenedores habituales de su municipio, los fabricantes de equipos electrónicos, están obligados a hacerse cargo de dichos productos al término de su período de vida. MSI estará comprometido con los términos de recogida de sus productos vendidos en la Unión Europea al final de su período de vida. Usted debe depositar estos productos en el punto limpio establecido por el ayuntamiento de su localidad o entregar a una empresa autorizada para la recogida de estos residuos.

NEDERLANDS

Om het milieu te beschermen, wil MSI u eraan herinneren dat....

De richtlijn van de Europese Unie (EU) met betrekking tot Vervuiling van Electricische en Electronische producten (2002/96/EC), die op 13 Augustus 2005 in zal gaan kunnen niet meer beschouwd worden als vervuiling.

Fabrikanten van dit soort producten worden verplicht om producten retour te nemen aan het eind van hun levenscyclus. MSI zal overeenkomstig de richtlijn handelen voor de producten die de merknaam MSI dragen en verkocht zijn in de EU. Deze goederen kunnen geretourneerd worden op lokale inzamelingspunten.

SRPSKI

Da bi zaštitili prirodnu sredinu, i kao preduzeće koje vodi računa o okolini i prirodnoj sredini, MSI mora da vas podesti da...

Po Direktivi Evropske unije ("EU") o odbačenoj električnoj opremi, Direktiva 2002/96/EC, koja stupa na snagu od 13. Avgusta 2005, proizvodi koji spadaju pod "elektronsku i električnu opremu" ne mogu više biti odbačeni kao običan otpad i proizvođači ove opreme biće prinudeni da uzmu natrag ove proizvode na kraju njihovog uobičajenog veka trajanja. MSI će poštovati zahtev o preuzimanju ovakvih proizvoda kojima je istekao vek trajanja, koji imaju MSI oznaku i koji su prodati u EU. Ove proizvode možete vratiti na lokalnim mestima za prikupljanje.

POLSKI

Aby chronić nasze środowisko naturalne oraz jako firma dbająca o ekologię, MSI przypomina, że...

Zgodnie z Dyrektywą Unii Europejskiej ("UE") dotyczącą odpadów produktów elektrycznych i elektronicznych (Dyrektywa 2002/96/EC), która wchodzi w życie 13 sierpnia 2005, tzw. "produkty oraz wyposażenie elektryczne i elektroniczne" nie mogą być traktowane jako śmieć komunalne, tak więc producenci tych produktów będą zobowiązani do odbierania ich w momencie gdy produkt jest wycofywany z użycia. MSI wypełni wymagania UE, przyjmując produkty (sprzedawane na terenie Unii Europejskiej) wycofywane z użycia. Produkty MSI będzie można zwracać w wyznaczonych punktach zbiorczych.

TÜRKÇE

Çevreci özelliğiyle bilinen MSI dünyada çevreyi korumak için hatırlatır:

Avrupa Birliği (AB) Kararnamesi Elektrik ve Elektronik Malzeme Atığı, 2002/96/EC Kararnamesi altında 13 Ağustos 2005 tarihinden itibaren geçerli olmak üzere, elektrikli ve elektronik malzemeler diğer atıklar gibi çöpe atılmayacak ve bu elektronik cihazların üreticileri, cihazların kullanım süreleri bittikten sonra ürünleri geri toplamakla yükümlü olacaktır. Avrupa Birliği'ne satılan MSI markalı ürünlerin kullanım süreleri bittiğinde MSI ürünlerin geri alınması isteği ile işbirliği içerisinde olacaktır. Ürünlerinizi yerel toplama noktalarına bırakabilirsiniz.

ČESKY

Záleží nám na ochraně životního prostředí - společnost MSI upozorňuje...

Podle směrnice Evropské unie ("EU") o likvidaci elektrických a elektronických výrobků 2002/96/EC platné od 13. srpna 2005 je zakázáno likvidovat "elektrické a elektronické výrobky" v běžném komunálním odpadu a výrobci elektronických výrobků, na které se tato směrnice vztahuje, budou povinni odebírat takové výrobky zpět po skončení jejich životnosti. Společnost MSI splní požadavky na odebrání výrobků značky MSI, prodávaných v zemích EU, po skončení jejich životnosti. Tyto výrobky můžete odevzdat v místních sběrnách.

MAGYAR

Annak érdekében, hogy környezetünket megvédjük, illetve környezetvédőként fellépve az MSI emlékezteti Önt, hogy ...

Az Európai Unió („EU”) 2005. augusztus 13-án hatályba lépő, az elektromos és elektronikus berendezések hulladékairól szóló 2002/96/EK irányelve szerint az elektromos és elektronikus berendezések többé nem kezelhetők lakossági hulladékként, és az ilyen elektronikus berendezések gyártói köteleessé válnak az ilyen termékek visszavételére azok hasznos élettartama végén. Az MSI betartja a termékvisszavétellel kapcsolatos követelményeket az MSI márkánév alatt az EU-n belül értékesített termékek esetében, azok élettartamának végén. Az ilyen termékeket a legközelebbi gyűjtőhelyre viheti.

ITALIANO

Per proteggere l'ambiente, MSI, da sempre amica della natura, ti ricorda che....

In base alla Direttiva dell'Unione Europea (EU) sullo Smaltimento dei Materiali Elettrici ed Elettronici, Direttiva 2002/96/EC in vigore dal 13 Agosto 2005, prodotti appartenenti alla categoria dei Materiali Elettrici ed Elettronici non possono più essere eliminati come rifiuti municipali: i produttori di detti materiali saranno obbligati a ritirare ogni prodotto alla fine del suo ciclo di vita. MSI si adeguerà a tale Direttiva ritirando tutti i prodotti marchiati MSI che sono stati venduti all'interno dell'Unione Europea alla fine del loro ciclo di vita. È possibile portare i prodotti nel più vicino punto di raccolta.

Table of Contents

FCC Caution	ii
Copy Right Notice	ii
Trademarks	ii
Revision History	ii
Important Safety Precautions	iii
WEEE Statement	iv
Chapter 1. Introduction	1
1.1 FS510(MS-6872) MSI Bluetooth Stereo Headphone	1
1.2 Product Features	2
1.3 System Requirements	3
1.4 Package Contents	3
1.5 Product View	5
1.6 Battery Charging	5
1.7 LED Indication	6
Chapter 2. Cell Phone Application	7
2.1 Pairing With Bluetooth Cell Phone	7
2.2 Picking up/ Rejecting An Incoming Call	8
Chapter 3. PC Application	9
3.1 Listening To Music From PC	9
3.2 Conversation On MSN Messenger	12
3.3 Conversation On Skype	14
3.3.1 Skype Configuration	14
3.3.2 Basic Operation With Skype Mode	16
Chapter 4. Frequently Asked Questions	17
Appendix: CE Compliance Booklet	21

1

Introduction

>>> 1.1 FS510 (MS-6872) MSI Bluetooth Stereo Headphone

MSI Bluetooth Stereo Headphone FS510 (MS-6872), with MSI superior Bluetooth technology, features its crystal clear stereo sound, brings you immersive music enjoyment. FS510 is fashionably designed to integrate cell, wireless and audio technology into a multi-purpose entertainment device. Despite of its **26g light-weight**, FS510 is capable of multi-purpose entertainment functions beyond your imagination.

You can listen to stereo music, from your PC, MP3/CD Players, iPod and other audio sources wirelessly. FS510 could be performed as a wireless Headphone for PC enabling **two-way of voice communication (Instant Messaging, Skype)** and direct streaming of high audio quality.

You can free yourselves from tangled Headphone wires yet enjoy up to **7.5 hours of talking/listening time** with Bluetooth-enabled cell phones.

>>> 1.2 Product Features

- Ability to **pre-pair** and **connect** to sources such as MP3 player (44.1 kHz), PC with Bluetooth ability(44.1 kHz), and cell phones (8 kHz or higher).
- The Bluetooth Headphone is able to reconnect itself to paired devices one power is on after being switched off.
- **Rechargeable** design with Li-polymer battery
- **Remote Control Fuction**
Support Play/Pause/Forward/Backward/**Lock**/Volume Up/Volume Down with remote control function.
- Accompanied with **MSI Software Blueplayer** utility for users to enjoy music through compatible cell phones.

>>> 1.3 System Requirements

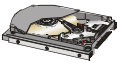
Before using Bluetooth Stereo Headphone, your PC should meet the following requirement:



- One desktop/notebook PC with available USB ports.



- Windows® 98SE/ME/2000/XP operating system.



- Minimum 5MB free disk space for installing the driver and utilities.



- One CD-ROM drive, double speed or higher.

>>> 1.4 Package Contents

Unpack the package and check all the items carefully. If any of following items are damaged or missing, please contact your local dealer as soon as possible. Also, keep the box and packing materials in case you need to send back in the future. The package should contain the following items:



- One MSI Bluetooth Stereo Headphone



- One charging adapter + mini USB cable



- Mini CD user's manual



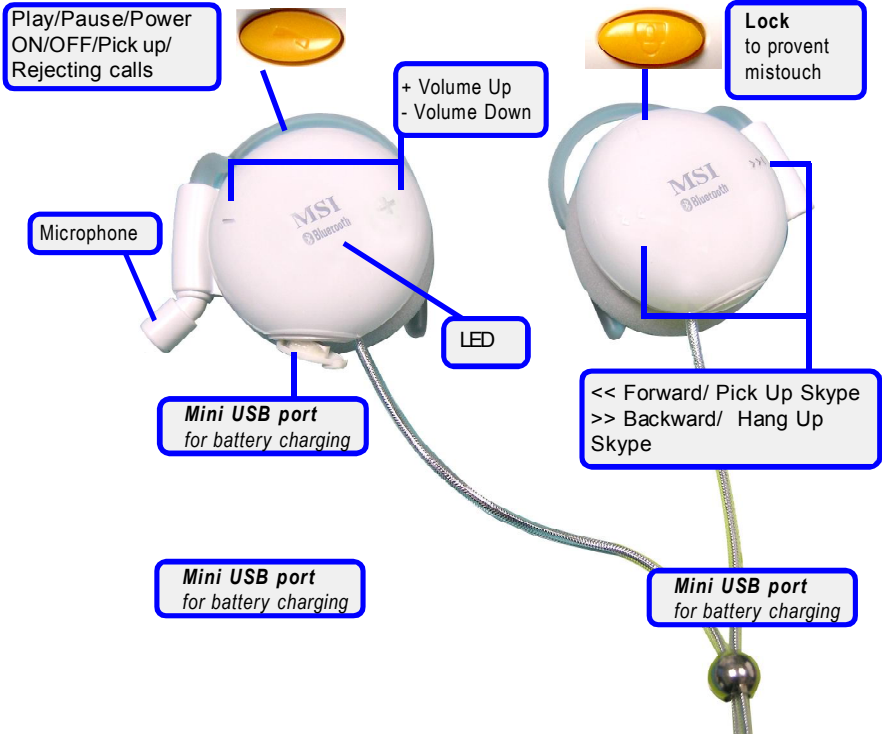
- Quick user's guide leaflet



- Small pouch

- Ear sponge

>>> 1.5 Product View

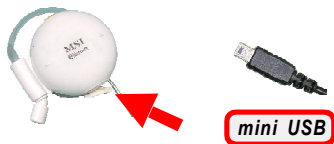


MSI Stereo Headphone FS510

>>> 1.6 Battery Charging

FS510 is equipped with high quality Li-polymer battery. The battery duration could be up to 7.5 hours of music listening after 3 hours of full charging. Make sure of power sufficiency each time when you are about to use FS510.

The package provides a power adapter for different standard. You can charge battery by plugging in **mini USB** of accompanied USB cable to **FS510**.



And plug in USB to **Either** any available USB ports on powered PC/laptop or other devices **OR** to adapter.



>>> 1.7 LED Indication

Following are LED indication for users to identify current mode and status of MSI Stereo Headphone FS510.

Before connected (under normal condition)	Blue LED always on
Connected mode (under normal condition)	Blue LED blinks 0.3 sec in every 4 sec.
Before connected (in low battery)	Blue LED blinks twice in every 3 sec.
Connected mode (in low battery)	Blue LED blinks twice in every 3 sec.
Charging Status	Red LED is on.

2 Cell Phone Application

The following section teaches you ways to apply FS510 functions via your Bluetooth-enabled cell phone.

>>> 2.1 Pairing With Bluetooth Cell Phone

Before using FS510 together with your Bluetooth-enabled cell phone, you need to have both devices paired first. Please follow simple and easy way to pair FS510 with your cell phone.

1. Press function button of FS510 for 3 seconds.
2. The default passkey of FS510 is **0000**.
3. After both devices have been successfully paired, the function button shall blink at a regular interval.

Note:

Bluetooth setting might vary due to different brands models involved. Please refer to your cell phone user manual for details.

For any questions regarding FS510 and cell phone pairing/connection, please refer to *Chapter 4 Frequently Asked Questions*.

>>> 2.2 Picking up/Rejecting An Incoming Call

With this function, you won't miss any important calls and you may reject calls when you prefer not to be disturbed by undesired calls.

1. As an incoming call arrives, a tone can be heard, and music you were listening would be paused.
2. Press and release to answer an incoming call.
3. Press 3 seconds to reject an incoming call.
4. Music shall be heard again as soon as call ends.

3

PC Application

The following section offers you instructions of several major applications of FS510. Please follow the guides below to have fun with FS510 MSI Bluetooth Stereo Headphone.

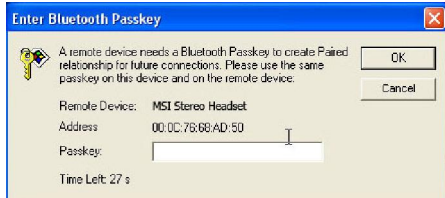
>>> 3.1 Listening To Music From PC

FS510 is equipped with unique stereo system and built-in DSP solution delivers crystal clear music as CD quality. Embedded noise cancelling microphone enhances audio quality by blocking out background noises.

1. Press function button of FS510 to power on it. FS510 will be in pairing mode by default, you can search FS510 via Bluetooth software (IVT BlueSoleil here for instance). Right click to select ***Pair Device***.



2. You shall be prompted to enter Bluetooth passkey, enter default passkey **0000**, and then click **OK** to complete pairing process. The LED indicator of FS510 shall light up un-interrupted showing pairing mode.




3. A red check shows by MSI Stereo Headset icon indicates successful pairing mode.

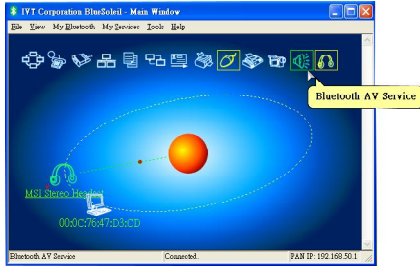


4. Right-click the MSI Stereo Headphone icon, then select **Connect/ Bluetooth AV service** to enable Bluetooth AV service function.



Or you might like to click the **Bluetooth AV Service** icon  on upper side of main screen instead to enable this function.

5. A **red dot** moves back and forth between the sun and the icon signifying the connection has been made.



6. Following is an example of listening music via Windows Media Player. Song volume and sequence are adjustable by pressing **play/pause**, **volume up/down (+/-)** or **forward/backward (</>)** button aside FS510.

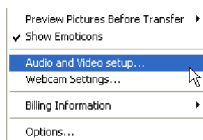


Note: IVT BlueSoleil Software supports only WindowsMedia Player , WinAmp and RealOne.

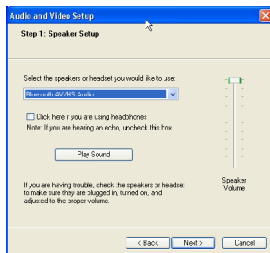
>>> 3.2 Conversation On MSN Messenger

FS510 frees you from limits of typing speed, allows your thoughts come along immediately with voice. You can easily convey love and concern to beloved family and friends who are not aside, which is something you cannot afford one second delay.

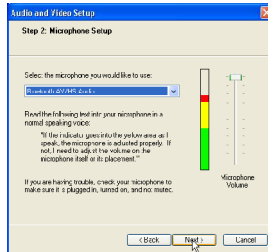
1. Make sure your Bluetooth AV Service is disconnected, and then connect to Bluetooth Headphone Service by clicking the Bluetooth Headphone Service icon. A beeping sound will be heard, and remember to press the function button of FS510 to enable this function. Follow instructions below to enable voice connection.
2. Select **Tools** on top of MSN Messenger main screen. Then choose **Audio and Video Setup**.



3. Follow the on-screen instructions to start speaker setup, select **Bluetooth AV/HS Audio**, and click **Play Sound** icon to test if speaker works properly.



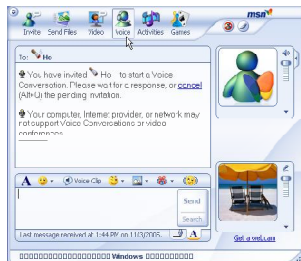
4. If speaker tests fine, click *Next* to proceed to microphone setup. Select **Bluetooth AV/HS Audio** same as last step then read the speaker test text. Click *Next* to enter Webcam setup if you want to setup one. Click *Finish* to exit.



5. At MSN Messenger, start conversation with any of your contacts by double-clicking his/her ID. Click **Voice** function on upper part of Messenger window to invite designate contact to start voice conversation.



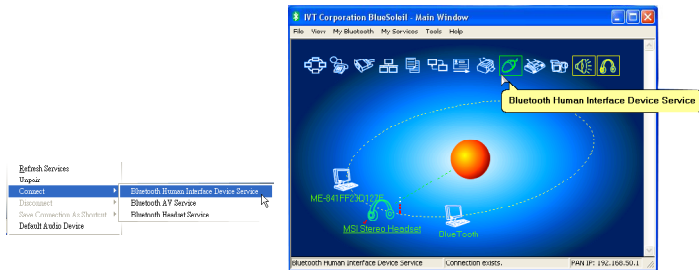
6. After the invitation of voice conversation has been accepted, you are free to chat!



>>> 3.3 Conversation On Skype


FS510 offers a convenient solution to receive and dial calls from Skype remotely. The following steps are about to take you to connect with Skype.

Before starting Skype Application, you need to connect to other Bluetooth Service by either clicking the Bluetooth Human Interface Device Service icon or selecting by right-clicking the MSI Stereo Headphone icon.



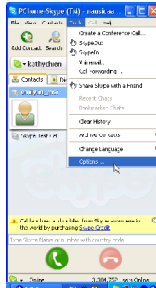
3.3.1 Skype Configuration

Few simple modifications need to be done before connecting FS510 to Skype properly. Please refer to following steps to configure settings.

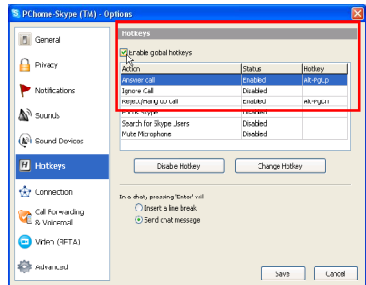
1. Activate Skype from your computer by clicking Skype icon .

Following steps are demonstration on Skype version 2.0.1.90.

2. Select **Tools** tab and select **Options**.

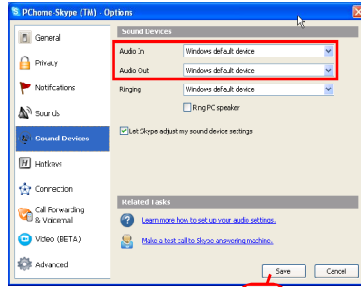


3. Under **Hotkey** tab, select and enabled the **Enable global hotkeys** option by placing the **check mark**.



4. Make sure the Hotkeyvalue for **Answer call** is set as **Alt+PgUp**, and **Reject/Hang Up call** is set as **Alt+PgDn** in order to work properly. (Alt+PgUp and Alt+PgDn are the default value of Skype).

5. Under **Sound Devices** tab, make sure the default value is set as **Windows default device**)




6. Press **Save** to exit setup.


3.3.2 Basic Operation With Skype Mode

In the Skype main screen, now, you are ready to use your Bluetooth Headphone to work with Skype.

Answer an incoming call

When an incoming call arrives, you may answer the call by either pressing Forward << button of FS510 or click  to answer. The figure aside is an illustration indicates a successful connection.

Reject/ Hang up an incoming call

Pressing Backward >> button of FS510 or click  to reject/hang up the call.



4

Frequently Asked Questions

Following are some Frequently Asked Questions for users who might encounter when problems when using MSI Stereo Headphone FS510.

Q1. Does the Headphone work with all types of cell phones?

Ans : No. FS510 works only with Bluetooth-enabled cell phones.

Q2. Why my cell phone failed to connect to FS510?

Ans : There might be several possibilities as described below:

- a. Please check if the battery sufficiency at both FS510 and cell phone first.
- b. There might be multiple Bluetooth devices nearby caused interferences. To restart FS510 and pairing/ connecting process are highly suggested.
- c. Make sure that your Bluetooth-enabled cell phone supports **Headset** profile and has been paired with and connected to FS510. Please refer cell phone user's manual for details.

Q3. Why my PC cannot be paired with FS510?

Ans : Please check if your FS510 has been connected with other devices. Once FS510 has been connected with any other devices, it cannot enter current pairing mode you are about to pair with. Please disconnect other devices to make sure a successful pairing with FS510.

Q4. How can I enjoy stereo music while at the same time without missing any incoming calls from cell phone?

Ans : Please pair FS510 with cell phone first, then pair with and connect to PC or other desired Bluetooth stereo transmitter to *Bluetooth AV service*.

Music you are listening to shall be paused as an incoming call arrives. Both voice and microphone will be switched to handsfree/headset profile at the mean time, and both will automatically be switched back to AV service after the call has been finished.

While at the same time, stereo music continues.

Q5. What is the working distance between this Headphone and a Bluetooth cell phone ?

Ans : The basic operating distance of this Bluetooth device is about 10 meters. However, it is also depending on the environment if there is any radio interference or obstacle around. The quality of a Bluetooth cell phone also effects the clarity of the connection. Some cell phones are providing less operating distance.

Q6. When my cell phone was searching for the Headphone, why did several Bluetooth devices appear on my cell phone?

Ans : Most Bluetooth enabled cell phones with Bluetooth function activated are capable of searching anyavailable Bluetooth devices nearby. The Headphone will appear as “MSI Stereo Headset” or “Unknown Device” on your cell phone after it is found by your cell phone.

Q7. What should I do when I can not hear very well with the Headphone ?

Ans : Adjust the sound volume on your cell phone, or press Volume up + button on FS510, or check if your cell phone is under a good signal area.

Q8. Do I need to pair the Headphone with my cell phone every time I use it ?

Ans : No. Once the Pairing is established between two devices, both shall remain paired even when one or both devices are turned off.

Q9. What is Pairing ?

Ans : Pairing is a Bluetooth function that enables Bluetooth devices to stay constant link condition to designate communication unit with added security.

Q10. What to do when my Headphone cannot re-establish connection after being turned off?

Ans : Simply redo the pairing procedures to re-establish proper connection.

CE Compliance Booklet

Table of Content

English	1
Detusch	2
Français	3
Čeština	4
Dansk	5
Nederlands	6
Eesti	7
SUOMEKSI	8
Ελληνικά	9
Magyar	10
Italiano	11
Latviska	12
Lietuvių	13
Malti	14
Polski	15
Português	16
Slovensky	17
Slovenèina	18
Español	19
SVENSKA	20



Hereby, Micro Star International CO., LTD declares that this device is in compliance with the essential requirements and other relevant provisions of Directive 1999/5/EC. The respective Declaration of conformity can be found online:

http://www.msi-computer.de/support/dl_man.php

IEEE 802.11b/g and Bluetooth® 2.4 GHz operation

Europe: Frequencies: 2.400 – 2.4835 GHz

France: Frequencies: 2.4465– 2.4835 GHz,

Outdoor use is limited to 10mW e.i.r.p. within the band 2454-2483.5 MHz

Italy:

If used outside of own premises, general authorisation is required.

Luxembourg:

General authorisation required for public service.

Notified Countries:

Germany, UK, Netherlands, Belgium, Sweden, Denmark, Finland, France, Italy, Spain, Austria, Ireland, Portugal, Greece, Luxembourg, Estonia, Letvia, Lithuania, Czech Republic, Slovakia , Slovenia, Hungary, Poland und Malta.

Prescribed use:

This product integrates a WLAN- and/or Bluetooth® device.

The device sets up a radio link between to computer. In addition it is possible to link the WLAN- or Bluetooth® device to any other WLAN- or Bluetooth® device which stick to the IEEE 802.11b/g or Bluetooth® requirements.

Operating range:

The transmission range between different WLAN- or Bluetooth® devices varies depending the specific environment. Walls, concrete floor (iron), laminated windows, vehicle-body, etc..

More electromagnetic interferences:

- high frequency emission of any kind,
- Buildings, trees, etc.
- Heaters, ferroconcrete, etc.
- open computer systems, etc.
- Microwave oven, etc.

Communication (exchange data) is dependent on the software of the WLAN or Bluetooth® devices.



Hiermit erklärt Micro Star International CO., LTD dass sich dieses Produkt in Übereinstimmung mit den grundlegenden Anforderungen und den anderen relevanten Vorschriften der Richtlinie 1999/5/EG befindet. Die Konformitätserklärung kann auf folgender website eingesehen werden:
http://www.msi-computer.de/support/dl_man.php

IEEE 802.11b/g und Bluetooth® 2.4 GHz Betrieb

Europa: Frequenzen: 2.400 – 2.4835 GHz

Frankreich: Frequenzen: 2.4465– 2.4835 GHz,

Außerhalb von geschlossenen Gebäuden ist die genehmigte Sendeleistung im Frequenzband 2454-2483.5 MHz auf maximal 10mW beschränkt.

Italy:

If used outside of own premises, general authorisation is required.

Luxembourg:

General authorisation required for public service.

Notified Countries:

Germany, UK, Netherlands, Belgium, Sweden, Denmark, Finland, France, Italy, Spain, Austria, Ireland, Portugal, Greece, Luxembourg, Estonia, Letvia, Lithuania, Czech Republic, Slovakia , Slovenia, Hungary, Poland und Malta.

Bestimmungsgemäße Verwendung:

Dieses Produkt integriert als Teil der Produktausstattung eine WLAN-Komponente und/oder eine Bluetooth®-Komponente.

Die entsprechende Komponente verbindet Computer über eine Funkverbindung . Es kann auch eine Funkverbindung zu anderen geeigneten WLAN- oder Bluetooth® Geräten hergestellt werden.

Hinweise zur Reichweite:

Der Abstand zwischen Sender und Empfänger (von einem WLAN- oder Bluetooth® -Gerät zu einem entsprechenden anderen Gerät) hängt stark von der Einsatzumgebung ab. Wände, Betonboden (Eisen), beschichtete Fensterscheiben, Fahrzeug-Karosserie, etc..

Weitere Beeinflussungen:

- Hochfrequenzaussendungen jeder Art
- Gebäude, Bäume, etc.
- Heizkörper, Stahlbeton, etc.
- offen betriebene Computer, etc.
- Mikrowellenherde, etc.

Die Kommunikation zwischen unterschiedlichen WLAN- oder Bluetooth® -Geräten ist von der jeweiligen Software und dem entsprechenden Versionsstand abhängig

MSI Technology GmbH. Frankfurt a. M.



Par la présente, Micro Star International CO., LTD, déclare que ce dispositif est conforme aux conditions essentielles et autres dispositions appropriées à la directive 1999/5/EC. La déclaration concernant la conformité peut être trouvée en ligne :

http://www.msi-computer.de/support/dl_man.php

IEEE 802.11b/g and Bluetooth® 2.4 GHz

Europe: Fréquences: 2.400 – 2.4835 GHz

France: Fréquences: 2.4465– 2.4835 GHz,

L'utilisation à l'extérieur est limitée à 10 Mw dans la bande passante 2454 à 2483.5 MH

Italy:

Pour une utilisation hors de ses propres lieux, une autorisation générale est requise.

Luxembourg:

Une autorisation générale est requise pour le service public.

Pays concernés

Germany, UK, Netherlands, Belgium, Sweden, Denmark, Finland, France, Italy, Spain, Austria, Ireland, Portugal, Greece, Luxembourg, Estonia, Letvia, Lithuania, Czech Republic, Slovakia , Slovenia, Hungary, Poland und Malta.

Utilisation prescrite

Le produit intègre un dispositif WLAN- et/ou Bluetooth®.

Le dispositif établit un lien radio avec l'ordinateur. De plus, il est possible de relier le dispositif WLAN – ou Bluetooth® à tout autre dispositif WLAN - ou Bluetooth® correspondant aux exigences du Bluetooth®.

Plage de fonctionnement

La plage de fonctionnement entre différents dispositifs WLAN ou Bluetooth® varie selon l'environnement. Murs, planchers en béton, fenêtres laminées, intérieur d'un véhicule.

Plus d'interférences électromagnétiques:

- Emission haute fréquence de toutes sortes
- Bâtiments, arbres, etc.
- Chauffage, bétons armés, etc.
- boîtier d'ordinateur non fermé.
- Micro-ondes, etc.

La communication (échange des données) dépend du logiciel des dispositifs WLAN ou Bluetooth®.



Společnost Micro Star International CO., LTD tímto prohlašuje, že toto zařízení splňuje základní požadavky a další odpovídající ustanovení směrnice 1999/5/EC. Příslušné prohlášení o shodě je k dispozici online: http://www.msi-computer.de/support/dl_man.php

Provozování bezdrátové komunikace standardu IEEE 802.11b/g a Bluetooth® 2,4 GHz:

Evropa: frekvence: 2,400 – 2,4835 GHz

Francie: frekvence: 2,4465– 2,4835 GHz,

vnější provozování je omezeno na 10mW e.i.r.p. v pásmu 2454 – 2483,5 MHz.

Italy:

K vnějšímu provozování na vlastních pozemcích je vyžadováno oprávnění.

Luxembourg:

K veřejným službám je vyžadováno obecné oprávnění.

Uvedené země:

Germany, UK, Netherlands, Belgium, Sweden, Denmark, Finland, France, Italy, Spain, Austria, Ireland, Portugal, Greece, Luxembourg, Estonia, Latvia, Lithuania, Czech Republic, Slovakia, Slovenia, Hungary, Poland und Malta.

Předepsané použití:

V tomto výrobku je integrováno zařízení WLAN- a/nebo Bluetooth®.

Toto zařízení navazuje rádiové spojení s počítačem. Navíc je toto zařízení WLAN- nebo Bluetooth® možné připojit k libovolnému jinému zařízení WLAN- nebo Bluetooth®, které splňuje požadavky standardu IEEE 802.11b/g nebo Bluetooth®.

Provozní dosah:

Přenosový dosah mezi různými zařízeními WLAN- nebo Bluetooth® se liší v závislosti na konkrétním prostředí. Stěny, (železo)betonová podlaha, laminovaná okna, karosérie vozidla, atd.

Další zdroje elektromagnetického rušení:

- vysokofrekvenční emise jakéhokoli druhu,
- budovy, stromy atd.
- topidla, železobeton atd.
- otevřené počítačové systémy atd.
- mikrovlnná trouba atd.

Komunikace (výměna dat) závisí na softwaru zařízení WLAN nebo Bluetooth®.



Micro Star International CO., LTD erklærer hermed at denne enhed overholder de væsentlige krav og andre relevante bestemmelser i direktiv 1999/5/EC. De respektive overbestemmelsesdeklARATIONER kan findes online: http://www.msi-computer.de/support/dl_man.php

IEEE 802.11b/g og Bluetooth® 2.4 GHz operation

Europa: Frekvenser: 2.400 – 2.4835 GHz

Frankrig: Frekvenser: 2.4465– 2.4835 GHz,

Udendørs brug er begrænset til 10mW e.i.r.p. inden for bånd 2454-2483.5 MHz

Italy:

Hvis anvendt uden for egen grund er general autorisation påkrævet.

Luxembourg:

General autorisation påkrævet for offentlig service.

Berørte lande:

Germany, UK, Netherlands, Belgium, Sweden, Denmark, Finland, France, Italy, Spain, Austria, Ireland, Portugal, Greece, Luxembourg, Estonia, Letvia, Lithuania, Czech Republic, Slovakia , Slovenia, Hungary, Poland und Malta.

Reglementeret brug:

Dette produkt integrerer en WLAN- og/eller Bluetooth® enhed.

Denne enhed etablerer en radioforbindelse mellem to computere. Yderligere er det muligt at forbinde WLAN- eller Bluetooth® enheden til en hvilken som helst anden WLAN- eller Bluetooth® enhed der overholder IEEE 802.11b/g eller Bluetooth® kravene.

Driftsrækkevidde:

Transmissionsrækkevidden mellem forskellige WLAN- eller Bluetooth® enheder varierer afhængig af de specifikke omgivelser. Vægge, betongulve (jern), splintfri glas, køretøjer, osv.

Andre elektromagnetiske forstyrrelser:

- højfrekvens udsendelse af enhver art,
- Bygninger, træer, osv.
- Varmekilder, jernbeton, osv.
- Åbne computersystemer, osv.
- Mikroovne, osv.

Kommunikation (dataudveksling) er afhængig af softwaren til WLAN eller Bluetooth® enhederne.



Hierbij verklaart Micro Star International CO., LTD dat dit apparaat voldoet aan de eisen en andere relevante maatstaven van de Directive 1999/5/EC.

De respectievelijke verklaring van conformiteit kan online gevonden worden:

http://www.msi-computer.de/support/dl_man.php

IEEE 802.11b/g en Bluetooth® 2.4 GHz werking

Europa: Frequenties: 2.400 – 2.4835 GHz

Frankrijk: Frequenties: 2.4465– 2.4835 GHz,

Buitengebruik is gelimiteerd tot 10mW EIRP (Effective Isotropic Radiated Power) binnen de breedte van 2454-2483.5 MHz

Italië:

Bij gebruik buiten eigen pand, is algemene autorisatie vereist.

Luxemburg:

Algemene autorisatie is vereist voor publieke service.

Aangekondigde Landen:

Germany, UK, Netherlands, Belgium, Sweden, Denmark, Finland, France, Italy, Spain, Austria, Ireland, Portugal, Greece, Luxembourg, Estonia, Latvia, Lithuania, Czech Republic, Slovakia, Slovenia, Hungary, Poland und Malta.

Voorgescreven gebruik:

Dit product is een WLAN- en/of Bluetooth® apparaat.

Dit apparaat maakt een "radio verbinding" met de computer.

Daarnaast is het mogelijk om het WLAN- of Bluetooth® apparaat te linken aan andere WLAN- of Bluetooth® apparaten die voldoen aan de IEEE 802.11b/g of Bluetooth® vereisten.

Bereik:

De transmissie range tussen verschillende WLAN- of Bluetooth® apparaten varieert afhankelijk van de specifieke omgevingen.

- Muren, beton, vitrage, carrosserieën etc..
- Meer electromagnetische storingen:
- Hoge frequentie afgifte van ieder soort,
- Gebouwen, bomen, etc. etc.
- Verwarmingen, gewapend beton, etc.
- Open computer systemen, etc.
- Magnetron-oven, etc,

Communicatie (uitwisselen van data) hangt af van de software van het WLAN of Bluetooth® apparaat.



Siinkohal teatab Micro Star International CO., LTD, et käesolev seade vastab direktiivi Directive 1999/5/EC põhinõuetele ning muudele olulistele sätetele. Sellekohase vastavusdeklaratsiooni võib leida aadressil: http://www.msi-computer.de/support/dl_man.php

IEEE 802.11b/g ja Bluetooth® 2.4 GHz töö

Euroopa: sagedused: 2,400 – 2,4835 GHz

Prantsusmaa: sagedused: 2,4465 – 2,4835 GHz

Kasutamine välistingimustes piiratud võimsusega 10mW, st sagedusriba 2454-2483,5 MHz piires

Italy:

Kasutamisel väljaspool oma territooriumi on vajalik üldine kasutusluba.

Luxembourg:

Avalikuks kasutamiseks vajalik üldine kasutusluba.

Teavitatud riigid:

Germany, UK, Netherlands, Belgium, Sweden, Denmark, Finland, France, Italy, Spain, Austria, Ireland, Portugal, Greece, Luxembourg, Estonia, Letvia, Lithuania, Czech Republic, Slovakia, Slovenia, Hungary, Poland und Malta.

Ettenähtud kasutamine:

See toode integreerib WLAN- ja/või Bluetooth®-seadme.

Seade loob raadiolingi arvutiga. Lisaks on võimalik ühendada WLAN- või Bluetooth®-seade mis tahes teise WLAN- või Bluetooth®-seadmega, mis vastab IEEE 802.11b/g või Bluetooth®-standardi nõuetele.

Tööulatus:

Tööulatus erinevate WLAN- või Bluetooth®-seadmete vahel varieerub olenevalt konkreetsest keskkonnast. Seinad, betoonpõrand (raud), mitmekihilised aknad, sõiduki kere jne.

Täiendavad elektromagnetilised häiringud:

- igat liiki kõrgsageduskiirgus,
- ehitised, puud jne,
- kütteseadmed, raudbetoon jne,
- avatud arvutisüsteemid jne,
- mikrolaineahjud jne.

Side (andmevahetus) on WLAN- või Bluetooth®-seadmete tarkvarast.



Täten Micro Star International CO., LTD vakuuttaa, että tämä laite on yhdenmukainen direktiivin 1999/5/EC olennaisten vaatimusten ja muiden asianmukaisten säädösten kanssa. Vastaava yhdenmukaisuus selvitys on nähtävillä Internetissä osoitteessa:

http://www.msi-computer.de/support/dl_man.php

IEEE 802.11b/g:n ja Bluetooth® 2.4 GHz:n käyttö

Eurooppa: Taajuudet: 2.400 – 2.4835 GHz

Ranska: Taajuudet: 2.4465– 2.4835 GHz,

Ulkokäyttö on rajoitettu 10mW e.i.r.p.:een 2454-2483.5 MHz kaistalla.

Italy:

Jos käytetään omien toimitilojen ulkopuolella, tarvitaan yleinen valtuutus.

Luxembourg:

Tarvitaan yleinen valtuutus julkista palvelua varten.

Ilmoitetut maat:

Germany, UK, Netherlands, Belgium, Sweden, Denmark, Finland, France, Italy, Spain, Austria, Ireland, Portugal, Greece, Luxembourg, Estonia, Latvia, Lithuania, Czech Republic, Slovakia, Slovenia, Hungary, Poland und Malta.

Määräystenmukainen käyttö:

Tämä tuote integroi WLAN- ja/tai Bluetooth® -laitteet.

Laite luo radiolinkin tietokoneen välille. Lisäksi WLAN- tai Bluetooth®-laite voidaan linkittää mihin tahansa toiseen WLAN- tai Bluetooth®-laitteeseen, joka vastaa IEEE 802.11b/g- tai Bluetooth®-vaatimuksia.

Toiminta-alue:

Erialaisten WLAN- ja Bluetooth® -laitteiden lähetysten kantama vaihtelee ympäristöstä riippuen. Seinät, betonilattia (rauta), laminaatti-ikkunat, ajoneuvon runko, jne.

Lisää sähkömagneettista häiriötä:

- mikä tahansa korkeataajuinen säteily,
- rakennukset, puut, jne.
- lämmitin, teräsbetoni, jne.
- avoimet tietokonejärjestelmät, jne.
- mikroaaltouuni, jne.

Tietojen vaihto riippuu WLAN- tai Bluetooth®-laitteiden ohjelmistoista.



Με το παρόν, η Micro Star International CO., LTD δηλώνει πως αυτή η συσκευή συμμορφώνεται με τις θεμελιώδεις απαιτήσεις και τις άλλες σχετικές διατάξεις της Οδηγίας 1999/5/EK. Η σχετική Δήλωση συμμόρφωσης μπορεί να βρεθεί στη διεύθυνση:
http://www.msi-computer.de/support/dl_man.php

IEEE λειτουργία 802.11b/g και Bluetooth® 2.4 GHz

Ευρώπη: Συχνότητες: 2.400 – 2.4835 GHz

Γαλλία: Συχνότητες: 2.4465– 2.4835 GHz,

Η χρήση σε εξωτερικούς χώρους περιορίζεται σε 10mW e.i.r.p. στη συχνότητα 2454-2483.5 MHz

Italy:

Αν χρησιμοποιείται εκτός των ιδιωτικών χώρων, απαιτείται γενική εξουσιοδότηση.

Luxembourg:

Απαιτείται γενική εξουσιοδότηση για δημόσια υπηρεσία.

Χώρες που έχουν ειδοποιηθεί:

Germany, UK, Netherlands, Belgium, Sweden, Denmark, Finland, France, Italy, Spain, Austria, Ireland, Portugal, Greece, Luxembourg, Estonia, Letvia, Lithuania, Czech Republic, Slovakia , Slovenia, Hungary, Poland und Malta.

Συνιστούμενη χρήση:

Αυτό το προϊόν ενσωματώνει μια συσκευή WLAN- και/ή Bluetooth®.

Η συσκευή δημιουργεί μια ραδιοφωνική σύνδεση μεταξύ υπολογιστών. Επιπλέον, είναι δυνατόν να συνδέσετε τη συσκευή WLAN- ή Bluetooth® σε οποιαδήποτε άλλη συσκευή WLAN- ή Bluetooth® η οποία συμμορφώνεται με τις απαιτήσεις IEEE 802.11b/g ή Bluetooth®.

Εύρος λειτουργίας:

Το εύρος μετάδοσης ανάμεσα σε διαφορετικές συσκευές WLAN- ή Bluetooth® ποικίλει ανάλογα με το συγκεκριμένο περιβάλλον. Τείχι, συμπαγές πάτωμα (σίδηρο), παράθυρα αλουμινίου, πλαίσιο οχήματος, κτλ. Περισσότερες ηλεκτρομαγνητικές παρεμβολές:

- εκπομπή οποιουδήποτε είδους υψηλής συχνότητας,
- Κτίρια, δέντρα, κτλ.
- Καλοριφέρ, μπετόν-αρμέ, κτλ.
- αναμμένα συστήματα υπολογιστών, κτλ.
- Φούρνος μικροκυμάτων, κτλ,

Η επικοινωνία (ανταλλαγή δεδομένων) εξαρτάται από το λογισμικό των συσκευών WLAN ή Bluetooth®.



Ezennel, a Micro Star International CO., LTD kijelenti, hogy ez az eszköz megfelel az 1999/5/EK Irányelv lényeges és egyéb releváns előírásainak. A vonatkozó Megfelelőségi Nyilatkozat megtalálható a következő címen:

http://www.msi-computer.de/support/dl_man.php

IEEE 802.11b/g és Bluetooth® 2,4 GHz üzemeltetés

Európa: Frekvenciák: 2,400 – 2,4835 GHz

Franciaország: Frekvenciák: 2,4465 – 2,4835 GHz,

A kültéri használat 10mW e.i.r.p. értékre korlátozott a 2454-2483,5 MHz sávban

Italy:

Amennyiben saját tulajdonú területen kívül használják, általános engedélyezés szükséges.

Luxembourg:

Általános engedélyezés szükséges nyilvános szolgáltatás esetén.

Bejelentett országok:

Germany, UK, Netherlands, Belgium, Sweden, Denmark, Finland, France, Italy, Spain, Austria, Ireland, Portugal, Greece, Luxembourg, Estonia, Letvia, Lithuania, Czech Republic, Slovakia, Slovenia, Hungary, Poland und Malta.

Előírt használat:

Ez a termék integrál egy WLAN- és/vagy Bluetooth® eszközt.

Az eszköz rádiókapcsolatot hoz létre két számítógép között. Ezen kívül, lehetséges összekapcsolni a WLAN- vagy Bluetooth® eszközt, bármilyen egyéb WLAN- vagy Bluetooth® eszközzel amely megfelel az IEEE 802.11b/g vagy Bluetooth® követelményeknek.

Üzemelési tartomány:

A sugárzási tartomány különböző WLAN- vagy Bluetooth® eszközök között, függ az adott környezettől. Falak, betonpadló (vas), réteges ablakok, jármű alváza, stb.

Elektromágneses zavarás:

- bármilyen fajta magas frekvenciájú sugárzás,
- épületek, fák, stb.
- fűtőtestek, vasbeton, stb.
- nyitott számítógéprendszerek, stb.
- mikrohullámú sütő, stb.

A kommunikáció (adatforgalom) függ a szoftvertől amelyek a WLAN vagy Bluetooth® eszközöket működtetik.



Con il presente, Micro Star International CO., LTD dichiara che la periferica è conforme alle principali richieste e ai più importanti provvedimenti della direttiva 1999/5/EC. La corrispondente Dichiarazione di conformità può essere trovata online:
http://www.msi-computer.de/support/dl_man.php

Funzionamento IEEE 802.11b/g e Bluetooth® 2.4 GHz

Europa: Frequenze: 2.400 – 2.4835 GHz

Francia: Frequenze: 2.4465– 2.4835 GHz,

L'uso in ambiente aperto è limitato a 10mW e.i.r.p. entro la banda 2454-2483.5 MHz

Italy:

Se si utilizza al di fuori della propria proprietà, è richiesta un'autorizzazione.

Luxembourg:

È necessaria un'autorizzazione per l'utilizzo in pubblico.

Paesi notificati:

Germany, UK, Netherlands, Belgium, Sweden, Denmark, Finland, France, Italy, Spain, Austria, Ireland, Portugal, Greece, Luxembourg, Estonia, Letvia, Lithuania, Czech Republic, Slovakia , Slovenia, Hungary, Poland und Malta.

Uso prescritto:

Questo prodotto integra una periferica WLAN- e/o Bluetooth®.

La periferica genera un collegamento radio al computer. Inoltre è possibile collegare la periferica WLAN- o Bluetooth® a ogni altra periferica WLAN- o Bluetooth® che soddisfi le richieste IEEE 802.11b/g o Bluetooth®.

Range di funzionamento:

La portata di trasmissione tra differenti periferiche WLAN- o Bluetooth® varia in funzione di specifiche condizioni ambientali. Muri, pavimenti in calcestruzzo, finestre laminare, la struttura del veicolo, ecc..

Maggiori interferenze elettromagnetiche:

- Emissioni ad alta frequenza di ogni tipo,
- Edifici, alberi, ecc.
- Caloriferi, cemento armato, ecc.
- Computer aperti, ecc.
- Forni a microonde, ecc,

La comunicazione (scambio di dati) dipende dal software delle periferiche WLAN o Bluetooth®.



Ar šo Micro Star International CO., LTD paziņo, ka šī ierīce atbilst direktīvas 1999/5/EK pamata prasībām un citiem saistītiem noteikumiem. Attiecīgā atbilstības deklarācija ir atrodamā tiešsaistē:
http://www.msi-computer.de/support/dl_man.php

IEEE 802.11b/g un Bluetooth® 2.4 GHz darbība

Eiropa: Frekvences: 2.400 – 2.4835 GHz

Francija: Frekvences: 2.4465– 2.4835 GHz,

Ārpustelpu lietošana ir ierobežota līdz 10 mW e.i.r.p. frekvenču joslā 2454-2483.5 MHz

Italy:

Lietojot ārpus mūsu telpām, nepieciešama vispārēja atļauja.

Luxembourg:

Vispārēja atļauja nepieciešama publiskai apkalpošanai.

Informētās valstis:

Germany, UK, Netherlands, Belgium, Sweden, Denmark, Finland, France, Italy, Spain, Austria, Ireland, Portugal, Greece, Luxembourg, Estonia, Latvia, Lithuania, Czech Republic, Slovakia, Slovenia, Hungary, Poland und Malta.

Paredzētā lietošana:

Šis produkts apvieno WLAN- un/vai Bluetooth® ierīci.

Šī ierīce izveido radio saiti ar datoru. Papildus ir iespējams WLAN- vai Bluetooth® ierīci saistīt ar jebkuru citu WLAN- vai Bluetooth® ierīci, kas atbilst IEEE 802.11b/g vai Bluetooth® prasībām.

Darbības diapazons:

Pārraidēs diapazons starp dažādām WLAN- vai Bluetooth® ierīcēm mainās atkarībā no konkrētās vides - sienas, cementa grīda (dzelzs), lamināta logi, automašīnas korpuss u.c.

Lielāka elektromagnētiskā interference:

- jebkura veida augstfrekvences starojums
- ēkas, koki u.c.
- sildķermeņi, dzelzsbetons u.c.
- atvērtas datorsistēmas u.c.
- mikroviļņu krāsns u.c.

Komunikācija (datu apmaiņa) ir atkarīga no WLAN vai Bluetooth® ierīču programmatūras.



Šiuo dokumentu Micro Star International CO., LTD, MSI pareiškia, kad šis prietaisas atitinka pagrindinius 1999/5/EB direktyvos reikalavimus ir kitas atitinkamas sąlygas. Atitinkamą Atitikimo pažymėjimą galima rasti internete adresu:

IEEE 802.11b/g ir Bluetooth® 2.4 GHz veikimas

Europa: dažniai: 2.400 – 2.4835 GHz

Prancūzija: dažniai: 2.4465– 2.4835 GHz,

Naudojimas lauke ribojamas 10mW e.i.r.p. 2454-2483.5 MHz diapazono juostoje.

Italy:

Jei naudojamas ne savo patalpose, reikalingas bendras leidimas.

Luxembourg:

Visuomeniniam naudojimui reikalingas bendras leidimas.

Naudojama šalyse:

Germany, UK, Netherlands, Belgium, Sweden, Denmark, Finland, France, Italy, Spain, Austria, Ireland, Portugal, Greece, Luxembourg, Estonia, Latvia, Lithuania, Czech Republic, Slovakia, Slovenia, Hungary, Poland und Malta.

Naudojimo paskirtis:

Į šio produkto sudėtį įeina WLAN- ir (arba) Bluetooth® prietaisas.

Prietaisas nustato kompiuterio radijo ryšį. Be to, WLAN- arba Bluetooth® prietaisą galima prijungti prie bet kokie kito WLAN- arba Bluetooth® prietaiso, kuris pagamintas laikantis IEEE 802.11b/g arba Bluetooth® reikalavimų.

Veikimo zona:

Skirtingų WLAN- arba Bluetooth® prietaisų transmisija kinta atsižvelgiant į specifinę aplinką. Sienos, betoninės grindys (geležis), laminuoti langai, transporto priemonės kėbulas ir pan.

Elektromagnetiniai trukdžiai:

- bet kokios rūšies aukšto dažnio emisijos,
- pastatai, medžiai ir pan.
- šildytuvai, gelžbetonis ir pan.
- atidarytos kompiuterinės sistemos ir pan.
- mikrobangų krosnelės ir pan.

Komunikacija (duomenų apsikeitimas) priklauso nuo WLAN arba Bluetooth® prietaisų programinės įrangos.



B'dan, Micro Star International CO., LTD tidikkjara li dan l-apparat iħares il-htigijiet essenzjali u d-dispożizzjonijiet oħrajn relevanti tad-Direttiva 1999/5/KE. Id-Dikjarazzjoni rispettiva tal-konformità tista' tinstab fuq is-sit ta' l-internet:

http://www.msi-computer.de/support/dl_man.php

L-operat ta' l-IEEE 802.11b/g u l-Bluetooth® fuq 2.4GHz

L-Ewropa: Frekwenzi: 2.400 – 2.4835 GHz

Franza: Frekwenzi: 2.4465– 2.4835 GHz,

L-użu barra huwa limitat għal 10mW e.i.r.p. fi hdan il-faxxa 2454-2453.5 MHz

Italy:

Tinftieg awtorizzazzjoni generali jekk jintuża 'l barra mill-post tas-sid stess.

Luxembourg:

Tinftieg awtorizzazzjoni generali għas-servizz pubbliku.

Pajjiżi Notifikati:

Germany, UK, Netherlands, Belgium, Sweden, Denmark, Finland, France, Italy, Spain, Austria, Ireland, Portugal, Greece, Luxembourg, Estonia, Letvia, Lithuania, Czech Republic, Slovakia, Slovenia, Hungary, Poland und Malta.

Użu preskritt:

Dan il-prodott jintegra apparat ta' WLAN- u/jew Bluetooth®.

Dan l-apparat jistabilixxi link bejn żewġ kompjuters. Barra minn hekk, huwa possibbli li jiġi stabbilit link bejn l-apparat tal-WLAN- jew Bluetooth® ma' kull apparat ieħor tal-WLAN- jew Bluetooth® li jħarsu strettament il-htigijiet ta' l-IEEE 803.11b/g jew tal-Bluetooth®.

Firxa operattiva:

Il-firxa tat-trasmissjoni bejn apparat differenti tal-WLAN- u jew Bluetooth® iwarja waqt li jiddependi fuq l-ambjent speċifiku. Ftitan, l-art tal-konkrit (ħadid), twieqi laminati, il-bodi tal-vevtturi, eċċ..

Iktar interferenzi elettromanjetiċi:

- emmissjonijiet ta' frekwenza għolja ta' kull tip,
- Bini, siġar, eċċ.
- Ftitors, konkrit bil-ħadid, eċċ.
- sistemi tal-kompjuter miftuħin, eċċ.
- Fran tal-majkrowejv, eċċ.

Il-kommunikazzjoni (skambju ta' *data*) hija dipendenti fuq is-*software* għall-apparat tal-WLAN jew Bluetooth®.



Niniejszym dokumentem Micro-Star International Co., LTD *zaświadcza, że urządzenie to jest zgodne z istotnymi wymaganiami Dyrektywy Unijnej 1999/5/EC*. Odpowiednią deklarację zgodności można odnaleźć pod adresem internetowym: http://www.msi-computer.de/support/dl_man.php

Zakres działania IEEE 802.11b/g i Bluetooth® 2.4 GHz

Europa: Częstotliwości: 2.400 – 2.4835 GHz

Francja: Częstotliwości: 2.4465– 2.4835 GHz,

Użycie na zewnątrz jest ograniczone do 10mW e.i.r.p. w zakresie pasma 2454-2483.5 MHz.

Włochy:

W przypadku zewnętrznego użycia we własnym zakresie, wymagane jest ogólne zezwolenie.

Luxemburg:

Wymagane jest odpowiednie zezwolenie do publicznego użytku.

Dotyczy krajów:

Niemcy, Wielka Brytania, Holandia, Belgia, Szwecja, Dania, Finlandia, Francja, Włochy, Hiszpania, Austria, Islandia, Portugalia, Grecja, Luxemburg, Estonia, Łotwa, Litwa, Czechy, Słowacja, Słowenia, Węgry, Polska i Malta.

Przeznaczenie:

Ten produkt łączy w sobie urządzenia WLAN- i/lub Bluetooth®.

Urządzenie to ustanawia łącze radiowe z komputerem. Dodatkowo jest możliwe połączenie tego urządzenia WLAN- lub Bluetooth® z innymi urządzeniami WLAN- lub Bluetooth®, pod warunkiem spełnienia wymagań IEEE 802.11b/g lub Bluetooth®.

Zakres działania:

Zasięg transmisji pomiędzy różnymi urządzeniami WLAN lub Bluetooth® zależy od warunków w jakich są one użytkowane. Ściany, betonowe podłogi (żelazo), okna laminowane, karoseria samochodowa itp. mogą powodować zakłócenia.

Inne zakłócenia elektromagnetyczne mogą być powodowane przez:

- różnego rodzaju wysokie częstotliwości,
- budynki, drzewa itd.
- grzejniki, beton, żelazo,
- otwarte obudowy komputerów,
- kuchenki mikrofalowe itp.

Połączenie (wymiana danych) zależy od oprogramowania urządzeń WLAN lub Bluetooth®.



Pela presente, Micro Star International CO., LTD declara que este dispositivo cumpre com os requerimentos essenciais e outras disposições relevantes da Directiva 1999/5/EC. A Declaração de conformidade correspondente pode-se encontrar online:

http://www.msi-computer.de/support/dl_man.php

Operação IEEE 802.11b/g e Bluetooth® 2.4 GHz

Europa: Frequências: 2.400 – 2.4835 GHz

França: Frequências: 2.4465– 2.4835 GHz,

O uso ao ar livre está limitado a 10mW e.i.r.p. dentro da banda 2454-2483.5 MHz

Itália:

Se utilizar afora das próprias instalações, requiere-se autorização geral.

Luxemburgo:

Requiere-se autorização geral para serviço público.

Países Notificados:

Alemania, Reino Unido, Holanda, Bélgica, Suécia, Dinamarca, Finlândia, França, Itália, Espanha, Austria, Irlanda, Portugal, Grécia, Luxemburgo, Estônia, Letvia, Lituânia, República Tcheca, Eslováquia, Eslovénia, Hungria, Polónia e Malta.

Utilização:

Este produto integra o dispositivo Bluetooth® e/ou WLAN.

O dispositivo configura um vínculo de radio link com o computador. Além disso pode conectar o dispositivo Bluetooth® e/ou WLAN com qualquer outro dispositivo Bluetooth® e/ou WLAN que cumpra com as normas IEEE 802.11b/g ou requerimentos Bluetooth®.

Radio de Operação:

O alcance de transmissão entre diferentes dispositivos WLAN ou Bluetooth® varia dependendo do ambiente específico. Paredes, pisos de concreto (ferro), janelas laminadas, corpos condutores, etc..

Mais interferências eletromagnéticas:

- Emissões de alta frequência de qualquer classe,
- Edifícios, árvores, etc.
- Aquecedores, etc.
- Sistemas de computador abertos,
- Forno Microondas,

A comunicação (intercâmbio de dados) depende do software dos dispositivos WLAN ou Bluetooth®.



Micro Star International CO., LTD prehlasuje, že je zariadenie v súlade so základnými požiadavkami a inými príbuznými podmienkami Nariadenia 1999/5/EC. Príslušnú deklaráciu o zhode je možné nájsť na internetovej stránke:

http://www.msi-computer.de/support/dl_man.php

Činnosť IEEE 802.11b/g a Bluetooth® 2.4 GHz

Európa: Frekvencie: 2.400 – 2.4835 GHz

Francúzsko: Frekvencie: 2.4465– 2.4835 GHz,

Vonkajšie použitie je limitované na 10mW v pásme 2454-2483.5 MHz

Italy:

Ak sa používa mimo vlastných priestorov, vyžaduje sa všeobecná plná moc.

Luxembourg:

Pre verejné služby sa vyžaduje všeobecná plná moc.

Oboznámené krajiny:

Germany, UK, Netherlands, Belgium, Sweden, Denmark, Finland, France, Italy, Spain, Austria, Ireland, Portugal, Greece, Luxembourg, Estonia, Letvia, Lithuania, Czech Republic, Slovakia , Slovenia, Hungary, Poland und Malta.

Predpísané použitie:

Tento produkt v sebe zahŕňa WLAN- a/alebo Bluetooth® zariadenie.

Zariadenie nastavuje rádiové spojenie s počítačom. Navyiac je možné pripojiť zariadenie WLAN alebo Bluetooth® k inému WLAN- alebo Bluetooth® zariadeniu, ktoré sa viaže na požiadavky IEEE 802.11b/g alebo Bluetooth®.

Pracovný rozsah:

Rozsah vysielania medzi rôznymi WLAN alebo Bluetooth® zariadeniami závisí od špecifickosti prostredia.

Múry, betónová podlaha (železo), laminátové okná, karosérie áut, atď.

Ďalšie elektromagnetické interferencie:

- vysokofrekvenčné emisie rôzneho druhu,
- Budovy, stromy, atď.
- Ohrievače, železobetón, atď.
- otvorené počítačové systémy, atď.
- Mikrovlnná rúra, atď.

Komunikácia (výmena dát) je závislá od softvéru WLAN alebo Bluetooth® zariadení.



S tem, Micro Star International CO., LTD s polno odgovornostjo izjavljamo, da je ta naprava skladna z pomembnimi zahtevami in vsemi bistvenimi predpisi direktive 1999/5/EC. Kopijo izjave o ustreznosti najdete na naslovu:

http://www.msi-computer.de/support/dl_man.php

Območje delovanja IEEE 802.11b/g in Bluetooth® 2.4 GHz

Evropa: frekvenčno območje: 2.400 – 2.4835 GHz

Francija: frekvenčno območje: 2.4465– 2.4835 GHz

Uporaba na prostem je omejena na 10 mW e.i.r.p. v frekvenčnem območju 2454-2483.5 MHz

Italy:

Če se uporablja izven določene meje, je potrebno ustrezno dovoljenje.

Luxembourg:

Za uporabo v javnosti je potrebno posebno dovoljenje.

Prijavljene države:

Germany, UK, Netherlands, Belgium, Sweden, Denmark, Finland, France, Italy, Spain, Austria, Ireland, Portugal, Greece, Luxembourg, Estonia, Latvia, Lithuania, Czech Republic, Slovakia, Slovenia, Hungary, Poland und Malta.

Predpisana uporaba:

Ta izdelek je sestavljen iz WLAN- in/ali Bluetooth® naprave.

Naprava je brezžično, radijsko povezana z računalnikom. Poleg tega je možno povezati WLAN- ali Bluetooth® napravo z katerokoli WLAN- ali Bluetooth® napravo, ki podpira IEEE 802.11b/g ali Bluetooth® zahteve.

Delovno območje:

Transmisijsko območje med različnimi WLAN- ali Bluetooth® napravami je odvisno od delovnega okolja. Npr. stene, betonska nadstropja (železo), laminirana okna, šasija vozila, ipd.

Vplivi silnega elektromagnetnega polja:

- kakršno koli visoko frekvenčno oddajanje
- zgradbe, drevesa, ipd.
- grelci, železobetonski, ipd.
- odprti računalniški sistemi, ipd.
- mikrovalovne peči, ipd.

Komunikacija (prenos podatkov) je odvisna od programske opreme WLAN ali Bluetooth® naprave.



Por la presente, Micro Star Internacional CO., LTD, declara que este dispositivo cumple las exigencias esenciales y otras previsiones importantes de la Directiva 1999/5/EC. La correspondiente declaración de conformidad puede encontrarse online en http://www.msi-computer.de/support/dl_man.php

IEEE 802.11b/g y Bluetooth® 2.4 GHz operación

Europe: Frecuencias: 2.400 – 2.4835 GHz

France: Frecuencias: 2.4465– 2.4835 GHz,

El uso exterior está limitado a 10mW e.i.r.p. dentro de la banda de 2454-2483.5 MHz

Italia:

Se requiere autorización para su empleo fuera de sus propios establecimientos

Luxemburgo:

Se requiere autorización para su utilización pública

Países notificados:

Alemania, Reino Unido, Países Bajos, Bélgica, Suecia, Dinamarca, Finlandia, Francia, Italia, España, Austria, Irlanda, Portugal, Grecia, Luxemburgo, Estonia, Letonia, Lituania, República Checa, Eslovaquia, Eslovenia, Hungría, Polonia y Malta.

Modo de funcionamiento

Este producto integra un dispositivo WLAN y/o un dispositivo Bluetooth®

El dispositivo establece un radio enlace con el ordenador. Además, es posible enlazar el dispositivo WLAN o Bluetooth® a cualquier otro dispositivo WLAN o Bluetooth® que se atenga a las exigencias del IEEE 802.11 b/g o Bluetooth®.

Rango de Funcionamiento:

La tasa de transmisión entre los dispositivos WLAN y Bluetooth® varía dependiendo del entorno específico. Paredes, determinados suelos (hiero), ventanas laminadas, cuerpos transmisores, etc.

Más interferencias electromagnéticas:

- Emisiones de alta frecuencia de cualquier tipo
- Edificios, árboles, etc.
- Calentadores, hormigón armado, etc.
- Sistemas informáticos abiertos, etc.
- Microondas, etc

La comunicación (intercambio de datos) depende del software de los dispositivos WLAN o Bluetooth®



Härmed intygar Micro Star International CO., LTD att denna anordning överensstämmer med baskraven och andra relevanta föreskrifter i direktivet 1999/5/EC. Själva Deklarationen om överensstämmelse i fråga kan hittas on-line på:

http://www.msi-computer.de/support/dl_man.php

IEEE 802.11b/g och Bluetooth® 2.4 GHz- operation

Europa: Frekvenser: 2,400 – 2,4835 GHz

Frankrike: Frekvenser: 2,4465– 2,4835 GHz,

Användning utomhus är begränsat till 10mW e.i.r.p. inom bandet 2454-2483.5 MHz

Italy:

Om den används utanför den egna bostaden, krävs ett allmänt godkännande.

Luxembourg:

Allmänt godkännande krävs för offentlig service.

Aviserade länder:

Germany, UK, Netherlands, Belgium, Sweden, Denmark, Finland, France, Italy, Spain, Austria, Ireland, Portugal, Greece, Luxembourg, Estonia, Letvia, Lithuania, Czech Republic, Slovakia , Slovenia, Hungary, Poland und Malta.

Fastställt bruk:

Denna produkt integrerar en WLAN- och/eller Bluetooth®- anordning.

Anordningen sätter upp en radiolänk mellan två datorer. Det är dessutom möjligt att länka WLAN- eller Bluetooth®- anordningen till vilken annan WLAN- eller Bluetooth®- anordning som helst som följer kraven som anges i IEEE 802.11b/g eller Bluetooth®.

Funktionsräckvidd:

Programöverföringen mellan olika WLAN- eller Bluetooth®- anordningar varierar beroende på den specifika miljön. Väggar, betonggol (järn), laminerade fönster, fordonets kaross o.s.v.

Fler elektromagnetiska störningar:

- någon slags emission på hög frekvens,
- Byggnader, träd o.s.v.
- Värmare, betongjärn o.s.v.
- öppna datorsystem o.s.v.
- Mikrovågsugn o.s.v.

Kommunikation (utbyte av data) är beroende av WLAN eller Bluetooth®- anordningarnas mjukvara.