



**FCC OET BULLETIN 65 SUPPLEMENT C  
Class II Permissive Change  
IC RSS-102 ISSUE 4**

**SAR EVALUATION REPORT**

*For*

**WLAN 802.11b/g/n 1T1R Slim Module  
(Tested inside of TOSHIBA Netbook: TOSHIBA AC100, TOSHIBA Dynabook AZ)**

**MODEL: MS-3822**

**FCC ID: I4L-MS3822**

**ID: 3715A-MS3822**

**REPORT NUMBER: 10U13341-1A**

**ISSUE DATE: July 31, 2010**

*Prepared for*

**Micro Star International Co Ltd  
No. 69, Li-De Street, Jung-He City  
Taipei Hsien, Taiwan**

*Prepared by*

**COMPLIANCE CERTIFICATION SERVICES  
47173 BENICIA STREET  
FREMONT, CA 94538, U.S.A.  
TEL: (510) 771-1000  
FAX: (510) 661-0888**



**NVLAP LAB CODE 200065-0**

Revision History

<u>Rev.</u>	<u>Issue Date</u>	<u>Revisions</u>	<u>Revised By</u>
--	July 30, 2010	Initial Issue	M. Heckrotte
A	July 31, 2010	Updated normal operation description in section 5	Devin Chang

## TABLE OF CONTENTS

1. ATTESTATION OF TEST RESULTS .....	4
2. TEST METHODOLOGY .....	5
3. FACILITIES AND ACCREDITATION .....	5
4. CALIBRATION AND UNCERTAINTY .....	5
4.1. MEASURING INSTRUMENT CALIBRATION .....	5
4.2. MEASUREMENT UNCERTAINTY .....	6
5. EQUIPMENT UNDER TEST .....	7
6. SYSTEM SPECIFICATIONS .....	8
7. TISSUE DIELECTRIC PARAMETERS CHECK .....	9
7.1. TISSUE PARAMETERS CHECK RESULTS FOR 2450 MHZ .....	11
8. SYSTEM VERIFICATION .....	12
8.1. SYSTEM CHECK RESULTS FOR D2450V2 .....	12
9. OUTPUT POWER VERIFICATION .....	15
10. SUMMARY OF SAR TEST RESULTS .....	16
11. SAR TEST PLOTS .....	17
12. ATTACHMENTS .....	18
13. ANTENNA TO USER SEPARATION DISTANCES .....	19
14. TEST SETUP PHOTOS .....	20
15. HOST DEVICE PHOTO .....	21

# 1. ATTESTATION OF TEST RESULTS

COMPANY NAME:	Micro Star International Co Ltd No. 69, Li-De Street, Jung-He City Taipei Hsien, Taiwan
EUT DESCRIPTION:	WLAN 802.11b/g/n 1T1R Slim Module (Tested inside of Toshiba netbook: TOSHIBA AC100, TOSHIBA Dynabook AZ)
MODEL NUMBER:	MS-3822
DEVICE CATEGORY:	Portable
EXPOSURE CATEGORY:	General Population/Uncontrolled Exposure
DATE TESTED:	July 22, 2010

FCC / IC Rule Parts	Freq. Range [MHz]	The Highest 1g SAR mW/g)	Limit (mW/g)
15.247 / RSS-102	2412-2462	0.00238	1.6

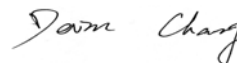
Applicable Standards	Test Results
FCC OET Bulletin 65 Supplement C 01-01 IC RSS 102 Issue 4	Pass

Compliance Certification Services, Inc. (CCS) tested the above equipment in accordance with the requirements set forth in the above standards. All indications of Pass/Fail in this report are opinions expressed by CCS based on interpretations and/or observations of test results. Measurement Uncertainties were not taken into account and are published for informational purposes only. The test results show that the equipment tested is capable of demonstrating compliance with the requirements as documented in this report.

**Note:** The results documented in this report apply only to the tested sample, under the conditions and modes of operation as described herein. This document may not be altered or revised in any way unless done so by CCS and all revisions are duly noted in the revisions section. Any alteration of this document not carried out by CCS will constitute fraud and shall nullify the document. This report must not be used by the client to claim product certification, approval, or endorsement by NVLAP, NIST, any agency of the Federal Government, or any agency of any government (NIST Handbook 150, Annex A). This report is written to support regulatory compliance of the applicable standards stated above.

Approved & Released For CCS By:

Tested By:

MICHAEL HECKROTTE  
 DIRECTOR OF ENGINEERING  
 COMPLIANCE CERTIFICATION SERVICES

DEVIN CHANG  
 EMC ENGINEER  
 COMPLIANCE CERTIFICATION SERVICES

## 2. TEST METHODOLOGY

FCC OET Bulletin 65 Supplement C 01-01 and the following specific FCC test procedures:

- KDB 248227 SAR measurement procedures for 802.11a/b/g transmitters
- KDB 447498 D01 Mobile Portable RF Exposure v04, suppl. to KDB 616217 D03

## 3. FACILITIES AND ACCREDITATION

The test sites and measurement facilities used to collect data are located at 47173 Benicia Street, Fremont, California, USA.

CCS is accredited by NVLAP, Laboratory Code 200065-0. The full scope of accreditation can be viewed at <http://www.ccsemc.com>.

## 4. CALIBRATION AND UNCERTAINTY

### 4.1. MEASURING INSTRUMENT CALIBRATION

The measuring equipment utilized to perform the tests documented in this report has been calibrated in accordance with the manufacturer's recommendations, and is traceable to recognized national standards.

Name of Equipment	Manufacturer	Type/Model	Serial No.	Cal. Due date		
				MM	DD	Year
Robot - Six Axes	Stäubli	RX90BL	N/A	N/A		
Robot Remote Control	Stäubli	CS7MB	3403-91535	N/A		
DASY4 Measurement Server	SPEAG	SEUMS001BA	1041	N/A		
Probe Alignment Unit	SPEAG	LB (V2)	261	N/A		
SAM Phantom (SAM1)	SPEAG	QD000P40CA	1185	N/A		
SAM Phantom (SAM2)	SPEAG	QD000P40CA	1050	N/A		
Oval Flat Phantom (ELI 4.0)	SPEAG	QD OVA001 B	1003	N/A		
Electronic Probe kit	HP	85070C	N/A	N/A		
S-Parameter Network Analyzer	Agilent	8753ES-6	MY40001647	11	22	2010
Signal Generator	Agilent	8753ES-6	MY40001647	11	22	2010
E-Field Probe	SPEAG	EX3DV3	3531	2	23	2011
System Validation Dipole	SPEAG	D2450V2	706	4	18	2013
ESG Vector Signal Generator	Agilent	E4438C	US44271090	9	17	2010
Power Meter	Giga-tronics	8651A	8651404	3	13	2012
Power Sensor	Giga-tronics	80701A	1834588	3	13	2012
Amplifier	Mini-Circuits	ZVE-8G	90606	N/A		
Amplifier	Mini-Circuits	ZHL-42W	D072701-5	N/A		
Simulating Liquid	SPAEG	M2450	N/A	Within 24 hrs of first test		

**Note:** Per KDB 450824 D02 requirements for dipole calibration, CCS has adopted three years calibration intervals. On annual basis, each measurement dipole has been evaluated and is in compliance with the following criteria:

1. There is no physical damage on the dipole
2. System validation with specific dipole is within 10% of calibrated value.
3. Return-loss is within 20% of calibrated measurement ( test data on file in CCS)
4. Impedance is within 5Ω of calibrated measurement (test data on file in CCS)

## 4.2. MEASUREMENT UNCERTAINTY

Measurement uncertainty for 300 MHz to 3 GHz averaged over 1 gram

Component	error, %	Probe Distribution	Divisor	Sensitivity	U (Xi), %
<b>Measurement System</b>					
Probe Calibration (k=1) @ Body 2450 MHz	5.50	Normal	1	1	5.50
Axial Isotropy	1.15	Rectangular	1.732	0.7071	0.47
Hemispherical Isotropy	2.30	Rectangular	1.732	0.7071	0.94
Boundary Effect	0.90	Rectangular	1.732	1	0.52
Probe Linearity	3.45	Rectangular	1.732	1	1.99
System Detection Limits	1.00	Rectangular	1.732	1	0.58
Readout Electronics	0.30	Normal	1	1	0.30
Response Time	0.80	Rectangular	1.732	1	0.46
Integration Time	2.60	Rectangular	1.732	1	1.50
RF Ambient Conditions - Noise	3.00	Rectangular	1.732	1	1.73
RF Ambient Conditions - Reflections	3.00	Rectangular	1.732	1	1.73
Probe Positioner Mechanical Tolerance	0.40	Rectangular	1.732	1	0.23
Probe Positioning with respect to Phantom	2.90	Rectangular	1.732	1	1.67
Extrapolation, Interpolation and Integration	1.00	Rectangular	1.732	1	0.58
<b>Test Sample Related</b>					
Test Sample Positioning	2.90	Normal	1	1	2.90
Device Holder Uncertainty	3.60	Normal	1	1	3.60
Output Power Variation - SAR Drift	5.00	Rectangular	1.732	1	2.89
<b>Phantom and Tissue Parameters</b>					
Phantom Uncertainty (shape and thickness)	4.00	Rectangular	1.732	1	2.31
Liquid Conductivity - deviation from target	5.00	Rectangular	1.732	0.64	1.85
Liquid Conductivity - measurement	-3.95	Normal	1	0.64	-2.53
Liquid Permittivity - deviation from target	5.00	Rectangular	1.732	0.6	1.73
Liquid Permittivity - measurement	1.49	Normal	1	0.6	0.89
Combined Standard Uncertainty U <sub>c</sub> (y) =					9.81
Expanded Uncertainty U, Coverage Factor = 2, > 95 % Confidence =					19.63 %
Expanded Uncertainty U, Coverage Factor = 2, > 95 % Confidence =					1.56 dB

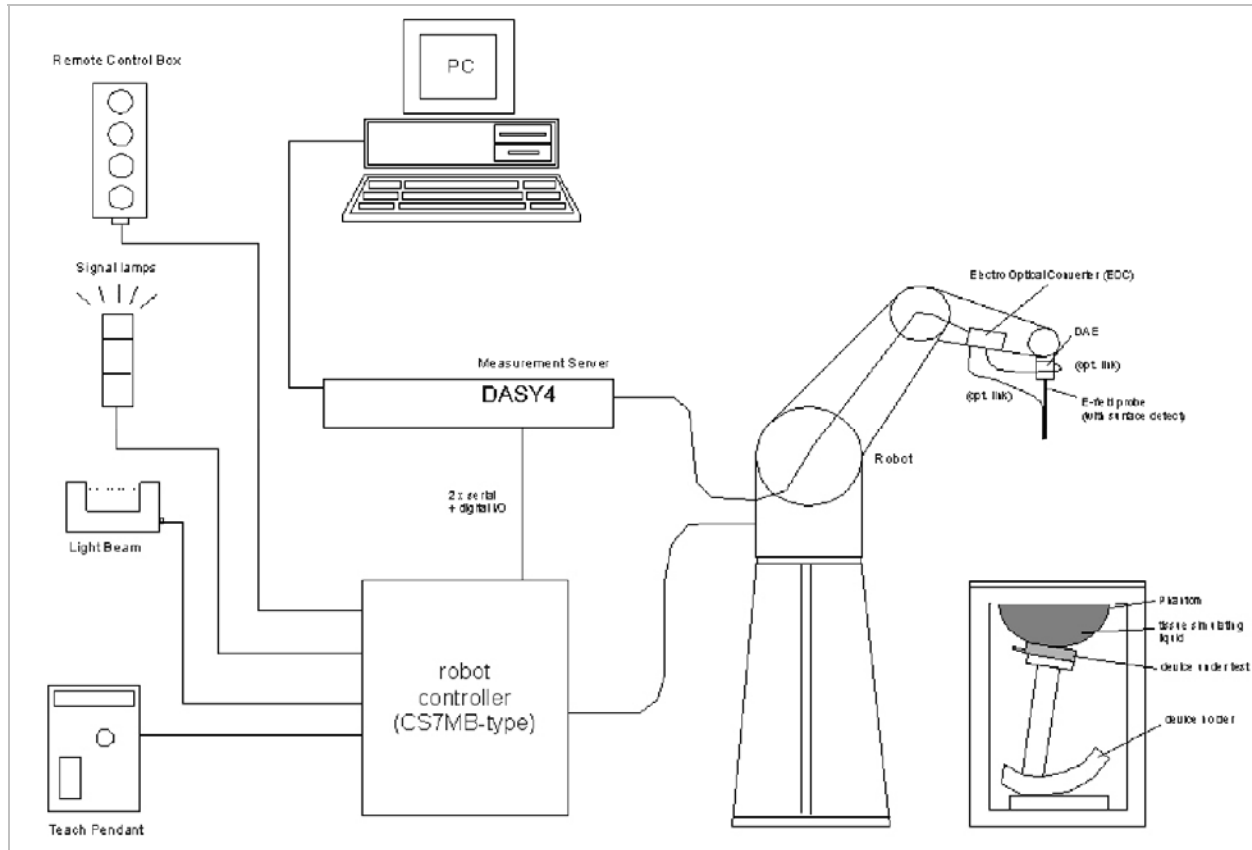
Measurement uncertainty for 300 MHz to 3 GHz averaged over 10 gram

Component	error, %	Probe Distribution	Divisor	Sensitivity	U (Xi), %
<b>Measurement System</b>					
Probe Calibration (k=1) @ 2450 MHz	5.50	Normal	1	1	5.50
Axial Isotropy	1.15	Rectangular	1.732	0.7071	0.47
Hemispherical Isotropy	2.30	Rectangular	1.732	0.7071	0.94
Boundary Effect	0.90	Rectangular	1.732	1	0.52
Probe Linearity	3.45	Rectangular	1.732	1	1.99
System Detection Limits	1.00	Rectangular	1.732	1	0.58
Readout Electronics	0.30	Normal	1	1	0.30
Response Time	0.80	Rectangular	1.732	1	0.46
Integration Time	2.60	Rectangular	1.732	1	1.50
RF Ambient Conditions - Noise	3.00	Rectangular	1.732	1	1.73
RF Ambient Conditions - Reflections	3.00	Rectangular	1.732	1	1.73
Probe Positioner Mechanical Tolerance	0.40	Rectangular	1.732	1	0.23
Probe Positioning with respect to Phantom	2.90	Rectangular	1.732	1	1.67
Extrapolation, Interpolation and Integration	1.00	Rectangular	1.732	1	0.58
<b>Test Sample Related</b>					
Test Sample Positioning	2.90	Normal	1	1	2.90
Device Holder Uncertainty	3.60	Normal	1	1	3.60
Output Power Variation - SAR Drift	5.00	Rectangular	1.732	1	2.89
<b>Phantom and Tissue Parameters</b>					
Phantom Uncertainty (shape and thickness)	4.00	Rectangular	1.732	1	2.31
Liquid Conductivity - deviation from target	5.00	Rectangular	1.732	0.43	1.24
Liquid Conductivity - measurement	-3.95	Normal	1	0.43	-1.70
Liquid Permittivity - deviation from target	5.00	Rectangular	1.732	0.49	1.41
Liquid Permittivity - measurement uncertainty	1.49	Normal	1	0.49	0.73
Combined Standard Uncertainty U <sub>c</sub> (y), % =					9.47
Expanded Uncertainty U, Coverage Factor = 2, > 95 % Confidence =					18.94 %
Expanded Uncertainty U, Coverage Factor = 2, > 95 % Confidence =					1.51 dB

## 5. EQUIPMENT UNDER TEST

WLAN 802.11b/g/n 1T1R Slim Module (Tested inside of Toshiba netbook: TOSHIBA AC100, TOSHIBA Dynabook AZ)					
Normal operation:	Laptop mode (display open at 90° to the keyboard),				
Antenna tested:	<table border="0"><tr><td><u>Manufactured</u></td><td><u>Part number</u></td></tr><tr><td>MSI</td><td>915-3871-003</td></tr></table>	<u>Manufactured</u>	<u>Part number</u>	MSI	915-3871-003
<u>Manufactured</u>	<u>Part number</u>				
MSI	915-3871-003				
Antenna-to-user separation distances:	See section 12 for details				

## 6. SYSTEM SPECIFICATIONS



### The DASY4 system for performing compliance tests consists of the following items:

- A standard high precision 6-axis robot (Stäubli RX family) with controller, teach pendant and software. An arm extension for accommodating the data acquisition electronics (DAE).
- A dosimetric probe, i.e., an isotropic E-field probe optimized and calibrated for usage in tissue simulating liquid. The probe is equipped with an optical surface detector system.
- A data acquisition electronics (DAE) which performs the signal amplification, signal multiplexing, AD-conversion, offset measurements, mechanical surface detection, collision detection, etc. The unit is battery powered with standard or rechargeable batteries. The signal is optically transmitted to the EOC.
- The function of the measurement server is to perform the time critical tasks such as signal filtering, control of the robot operation and fast movement interrupts.
- A probe alignment unit which improves the (absolute) accuracy of the probe positioning.
- A computer operating Windows 2000 or Windows XP.
- DASY4 software.
- Remote controls with teach pendant and additional circuitry for robot safety such as warning lamps, etc.
- The SAM twin phantom enabling testing left-hand and right-hand usage.
- The device holder for handheld mobile phones.
- Tissue simulating liquid mixed according to the given recipes.
- Validation dipole kits allowing to validate the proper functioning of the system.



## 7. COMPOSITION OF INGREDIENTS FOR TISSUE SIMULATING LIQUIDS

The following tissue formulations are provided for reference only as some of the parameters have not been thoroughly verified. The composition of ingredients may be modified accordingly to achieve the desired target tissue parameters required for routine SAR evaluation.

Ingredients (% by weight)	Frequency (MHz)									
	450		835		915		1900		2450	
Tissue Type	Head	Body	Head	Body	Head	Body	Head	Body	Head	Body
Water	38.56	51.16	41.45	52.4	41.05	56.0	54.9	40.4	62.7	73.2
Salt (NaCl)	3.95	1.49	1.45	1.4	1.35	0.76	0.18	0.5	0.5	0.04
Sugar	56.32	46.78	56.0	45.0	56.5	41.76	0.0	58.0	0.0	0.0
HEC	0.98	0.52	1.0	1.0	1.0	1.21	0.0	1.0	0.0	0.0
Bactericide	0.19	0.05	0.1	0.1	0.1	0.27	0.0	0.1	0.0	0.0
Triton X-100	0.0	0.0	0.0	0.0	0.0	0.0	0.0	0.0	36.8	0.0
DGBE	0.0	0.0	0.0	0.0	0.0	0.0	44.92	0.0	0.0	26.7
Dielectric Constant	43.42	58.0	42.54	56.1	42.0	56.8	39.9	54.0	39.8	52.5
Conductivity (S/m)	0.85	0.83	0.91	0.95	1.0	1.07	1.42	1.45	1.88	1.78

Salt: 99+% Pure Sodium Chloride

Sugar: 98+% Pure Sucrose

Water: De-ionized, 16 MΩ+ resistivity

HEC: Hydroxyethyl Cellulose

DGBE: 99+% Di(ethylene glycol) butyl ether, [2-(2-butoxyethoxy)ethanol]

Triton X-100 (ultra pure): Polyethylene glycol mono [4-(1,1, 3, 3-tetramethylbutyl)phenyl]ether

## 8. TISSUE DIELECTRIC PARAMETERS CHECK

The simulating liquids should be checked at the beginning of a series of SAR measurements to determine if the dielectric parameters are within the tolerances of the specified target values. For frequencies in 300 MHz to 2 GHz, the measured conductivity and relative permittivity should be within  $\pm 5\%$  of the target values. For frequencies in the range of 2–3 GHz and above the measured conductivity should be within  $\pm 5\%$  of the target values. The measured relative permittivity tolerance can be relaxed to no more than  $\pm 10\%$ .

### Reference Values of Tissue Dielectric Parameters for Body (for 300 – 3000 MHz and 5800 MHz)

The body tissue parameters that have not been specified in P1528 are derived from the tissue dielectric parameters computed from the 4-Cole-Cole equations and extrapolated according to the head parameters specified in IEEE Standard 1528.

Target Frequency (MHz)	Body (Supplement C 01-01)	
	$\epsilon_r$	$\sigma$ (S/m)
300	58.20	0.92
450	56.70	0.94
835	55.20	0.97
900	55.00	1.05
915	55.00	1.06
1450	54.00	1.30
1610	53.80	1.40
1800 – 2000	53.30	1.52
2450	52.70	1.95
3000	52.00	2.73
5800	48.20	6.00

( $\epsilon_r$  = relative permittivity,  $\sigma$  = conductivity and  $\rho = 1000 \text{ kg/m}^3$ )

### 8.1. TISSUE PARAMETERS CHECK RESULTS FOR 2450 MHZ

Simulating Liquid Dielectric Parameters for Body 2450 MHz

Room Ambient Temperature = 24°C; Relative humidity = 38%

Measured by: Devin Chang

f (MHz)	Liquid Parameters		Measured	Target	Delta (%)	Limit (%)	
2450	e'	51.91	Relative Permittivity ( $\epsilon_r$ ):	51.914	52.7	-1.49	± 5
	e"	14.87	Conductivity ( $\sigma$ ):	2.027	1.95	3.95	± 5

Liquid Check

Ambient temperature: 24 deg. C; Liquid temperature: 23 deg. C

July 22, 2010 09:46 AM

Frequency	e'	e"
2400000000.	52.0886	14.6855
2405000000.	52.0691	14.7065
2410000000.	52.0509	14.7254
2415000000.	52.0258	14.7341
2420000000.	52.0030	14.7644
2425000000.	51.9824	14.7747
2430000000.	51.9728	14.7919
2435000000.	51.9774	14.8034
2440000000.	51.9695	14.8232
2445000000.	51.9568	14.8544
<b>2450000000.</b>	<b>51.9135</b>	<b>14.8722</b>
2455000000.	51.9087	14.8970
2460000000.	51.8771	14.9423
2465000000.	51.8579	14.9697
2470000000.	51.8106	14.9941
2475000000.	51.8064	15.0091
2480000000.	51.7821	15.0291
2485000000.	51.7648	15.0656
2490000000.	51.7411	15.0854
2495000000.	51.7274	15.1093
2500000000.	51.6929	15.1288

The conductivity ( $\sigma$ ) can be given as:

$$\sigma = \omega \epsilon_0 e'' = 2 \pi f \epsilon_0 e''$$

where  $f = \text{target } f * 10^6$

$$\epsilon_0 = 8.854 * 10^{-12}$$

## 9. SYSTEM VERIFICATION

The system performance check is performed prior to any usage of the system in order to verify SAR system accuracy. The system performance check verifies that the system operates within its specifications of  $\pm 10\%$ .

### System Performance Check Measurement Conditions

- The measurements were performed in the flat section of the SAM twin phantom filled with Body simulating liquid of the following parameters.
- The DASY4 system with an Isotropic E-Field Probe EX3DV3-SN: 3531 was used for the measurements.
- The dipole was mounted on the small tripod so that the dipole feed point was positioned below the center marking of the flat phantom section and the dipole was oriented parallel to the body axis (the long side of the phantom). The standard measuring distance was 10 mm (above 1 GHz) and 15 mm (below 1 GHz) from dipole center to the simulating liquid surface.
- The coarse grid with a grid spacing of 15 mm was aligned with the dipole.  
 For 5 GHz band - The coarse grid with a grid spacing of 10 mm was aligned with the dipole.
- Special 7x7x7 (2.4 GHz) fine cube was chosen for cube integration and Special 8x8x10 (5 GHz) fine cube was chosen for cube integration
- Distance between probe sensors and phantom surface was set to 3 mm.  
 For 5 GHz band - Distance between probe sensors and phantom surface was set to 2.5 mm
- The dipole input powers (forward power) were 100 mW.
- The results are normalized to 1 W input power.

Reference SAR Values for HEAD & BODY-tissue from calibration certificate of SPEAG.

System validation dipole	Cal. certificate #	Cal. due date	SAR Avg (mW/g)		
			Tissue:	Head	Body
D2450V2	D2450V2-706_Apr10	04/18/13	SAR <sub>1g</sub> :	51.6	52.4
			SAR <sub>10g</sub> :	24.4	24.5

### 9.1. SYSTEM CHECK RESULTS FOR D2450V2

Ambient Temperature = 24°C; Relative humidity = 38%

Measured by: Devin Chang

System validation dipole	Date Tested	Measured (Normalized to 1 W)		Target	Delta (%)	Tolerance (%)
		Tissue:	Body			
D2450V2	07/22/10	SAR <sub>1g</sub> :	54.0	52.4	3.05	$\pm 10$
		SAR <sub>10g</sub> :	25.3	24.5	3.27	

### SYSTEM CHECK PLOT

Date/Time: 7/22/2010 10:25:05 AM

Test Laboratory: Compliance Certification Services

#### System Performance Check - D2450V2

DUT: Dipole ; Type: D2450V2; Serial: 706

Communication System: System Check Signal - CW; Frequency: 2450 MHz; Duty Cycle: 1:1

Medium parameters used:  $f = 2450$  MHz;  $\sigma = 2.03$  mho/m;  $\epsilon_r = 51.9$ ;  $\rho = 1000$  kg/m<sup>3</sup>

Phantom section: Flat Section

Room Ambient Temperature: 24.0 deg. C; Liquid Temperature: 23.0 deg. C

DASY4 Configuration:

- Area Scan setting - Find Secondary Maximum Within: 2.0 dB and with a peak SAR value greater than 0.0012W/kg
- Probe: EX3DV3 - SN3531; ConvF(7.58, 7.58, 7.58); Calibrated: 2/23/2010
- Sensor-Surface: 3mm (Mechanical Surface Detection)
- Electronics: DAE3 Sn500; Calibrated: 9/15/2009
- Phantom: Flat Phantom ELI4.0; Type: QDOVA001BA; Serial: SN:1003
- Measurement SW: DASY4, V4.7 Build 80; Postprocessing SW: SEMCAD, V1.8 Build 186

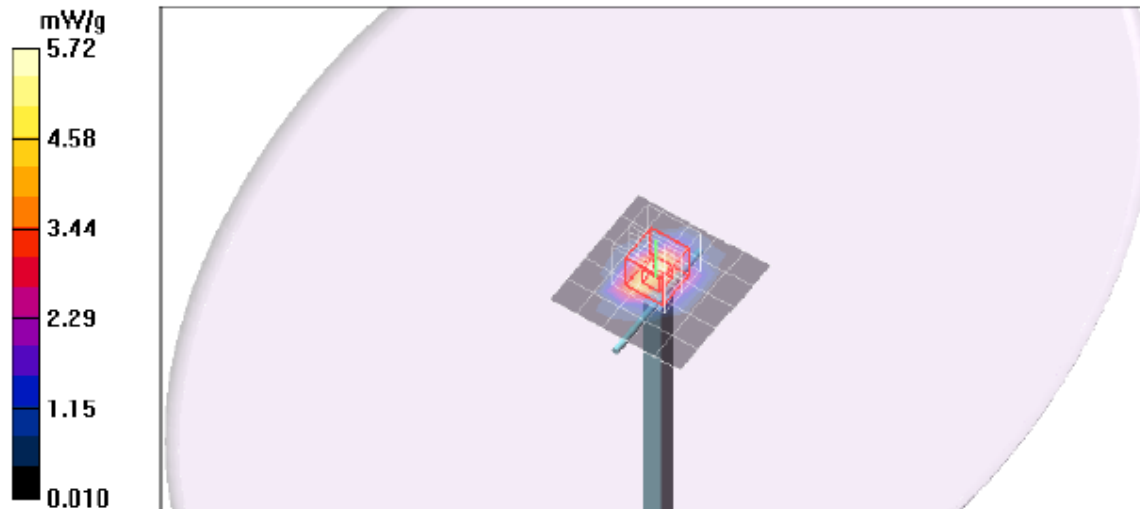
**d=10mm, Pin=100mW/Area Scan (6x6x1):** Measurement grid: dx=15mm, dy=15mm  
Maximum value of SAR (measured) = 5.72 mW/g

**d=10mm, Pin=100mW/Zoom Scan (7x7x7)/Cube 0:** Measurement grid: dx=5mm, dy=5mm, dz=5mm  
Reference Value = 59.4 V/m; Power Drift = -0.072 dB

Peak SAR (extrapolated) = 10.9 W/kg

**SAR(1 g) = 5.4 mW/g; SAR(10 g) = 2.53 mW/g**

Maximum value of SAR (measured) = 7.14 mW/g



**SYSTEM CHECK – Z Plot**

Date/Time: 7/22/2010 10:41:20 AM

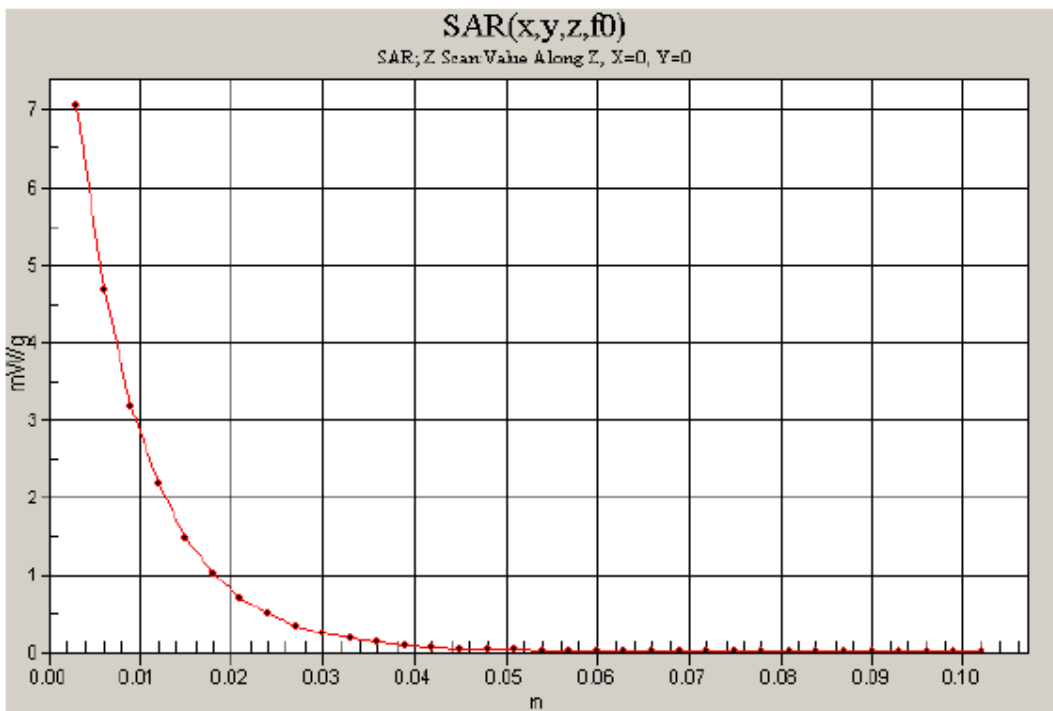
Test Laboratory: Compliance Certification Services

**System Performance Check - D2450V2**

DUT: Dipole ; Type: D2450V2; Serial: 706

Communication System: System Check Signal - CW; Frequency: 2450 MHz;Duty Cycle: 1:1

**d=10mm, Pin=100mW/Z Scan (1x1x34):** Measurement grid: dx=20mm, dy=20mm, dz=3mm  
Maximum value of SAR (measured) = 7.06 mW/g



## 10. OUTPUT POWER VERIFICATION

### Results

Mode	Channel	Freq. (MHz)	Average Output Power (dBm)
802.11b	1	2412	14.4
	6	2437	14.5
	11	2462	14.5
802.11g	1	2412	13.1
	6	2437	13.6
	11	2462	13.3
802.11n HT20	1	2412	12.8
	6	2437	12.9
	11	2462	12.4
802.11n HT40	3	2422	12.2
	6	2437	12.8
	9	2452	12.5

**Note:** KDB 248227 - SAR is not required for 802.11g channels when the maximum average output power is less than 1/4 dB higher than that measured on the corresponding 802.11b channels.

## 11. SUMMARY OF SAR TEST RESULTS

### Laptop - Lap-held (with the display open at 90° to the keyboard)

Mode	Channel	f (MHz)	Results (mW/g)	
			1g-SAR	10g-SAR
802.11b	1	2412		
	6	2437	0.00238	0.00163
	11	2462		

Note: KDB 248227 - SAR is not required for 802.11g/HT20/HT40 channels when the maximum average output power is less than 1/4 dB higher than that measured on the corresponding 802.11b channels.



## 12. SAR TEST PLOTS

Date/Time: 7/22/2010 3:17:47 PM

Test Laboratory: Compliance Certification Services

### Laptop Mode\_Lap-hepd

DUT: Toshiba; Type: NA; Serial: NA

Communication System: 802.11bg; Frequency: 2437 MHz; Duty Cycle: 1:1  
Medium parameters used (interpolated):  $f = 2437$  MHz;  $\sigma = 2.01$  mho/m;  $\epsilon_r = 52$ ;  $\rho = 1000$  kg/m<sup>3</sup>  
Phantom section: Flat Section

Room Ambient Temperature: 24.0 deg. C; Liquid Temperature: 23.0 deg. C

DASY4 Configuration:

- Area Scan setting - Find Secondary Maximum Within: 2.0 dB and with a peak SAR value greater than 0.0012W/kg
- Probe: EX3DV3 - SN3531; ConvF(7.58, 7.58, 7.58); Calibrated: 2/23/2010
- Sensor-Surface: 3mm (Mechanical Surface Detection)
- Electronics: DAE3 Sn500; Calibrated: 9/15/2009
- Phantom: Flat Phantom ELI4.0; Type: QDOVA001BA; Serial: SN:1003
- Measurement SW: DASY4, V4.7 Build 80; Postprocessing SW: SEMCAD, V1.8 Build 186

**802.11b M-ch Mian Ant/Area Scan (11x11x1):** Measurement grid: dx=15mm, dy=15mm

Info: [Interpolated medium parameters used for SAR evaluation.](#)

Maximum value of SAR (measured) = 0.004 mW/g

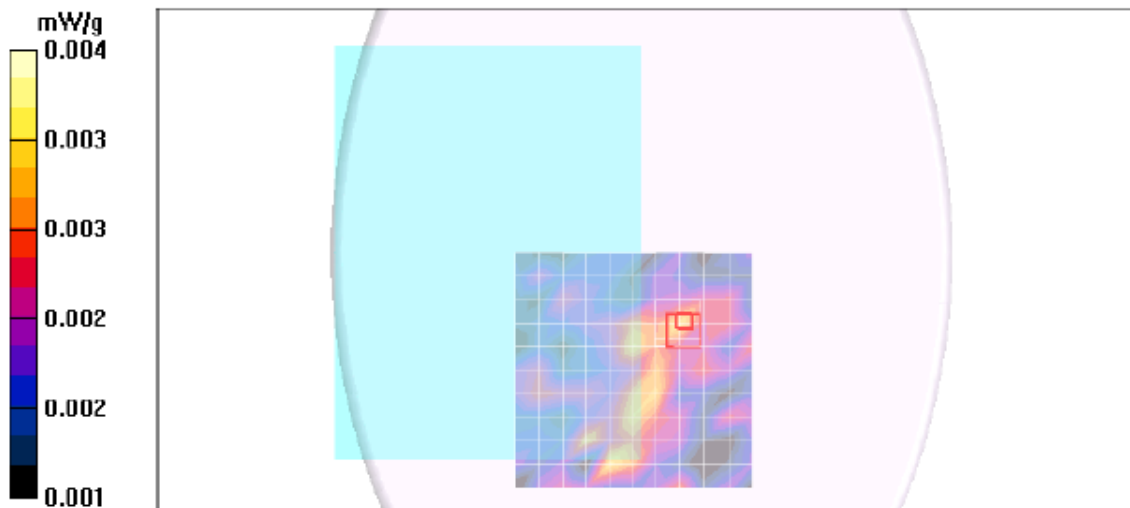
**802.11b M-ch Mian Ant/Zoom Scan (7x7x9)/Cube 0:** Measurement grid: dx=5mm, dy=5mm, dz=3mm

Reference Value = 1.05 V/m; Power Drift = 0.186 dB

Peak SAR (extrapolated) = 0.011 W/kg

**SAR(1 g) = 0.00238 mW/g; SAR(10 g) = 0.00163 mW/g**

Info: [Interpolated medium parameters used for SAR evaluation.](#)



### 13. ATTACHMENTS

<u>No.</u>	<u>Contents</u>	<u>No. of page (s)</u>
1	Certificate of E-Field Probe - EX3DV3 SN 3531	11
2	Certificate of System Validation Dipole - D2450 SN:706	9

### 14. ATENNA TO USER SEPARATION DISTANCES

