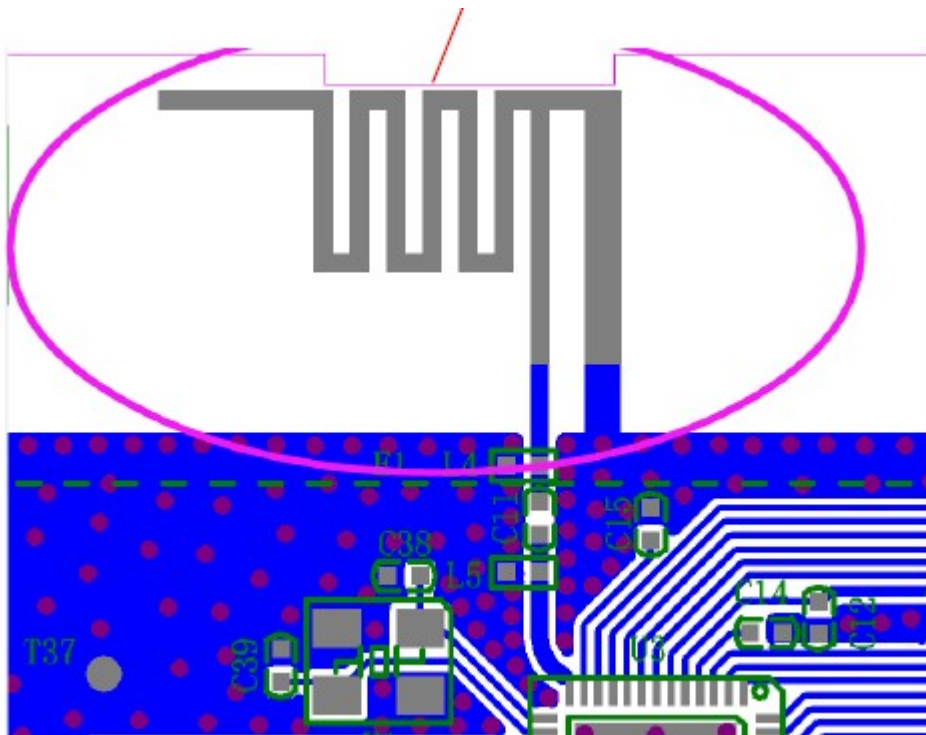


# ANTENNA SPECIFICATION

Model name : GC300-TX Antenna

- 1 , Frequency Range : 2402MHz - 2480MHz
- 2 , Channel Number : 79
- 3 , Channel Frequency : 2402MHz+K MHz (K=0,1,2,... ,78)
- 4 , RF Output Power : 0 dbi
- 5 , Type of Modulation : GFSK
- 6 , Antenna Specification : Meander Line PCB Antenna
- 7 , Manufacturer : Eastport

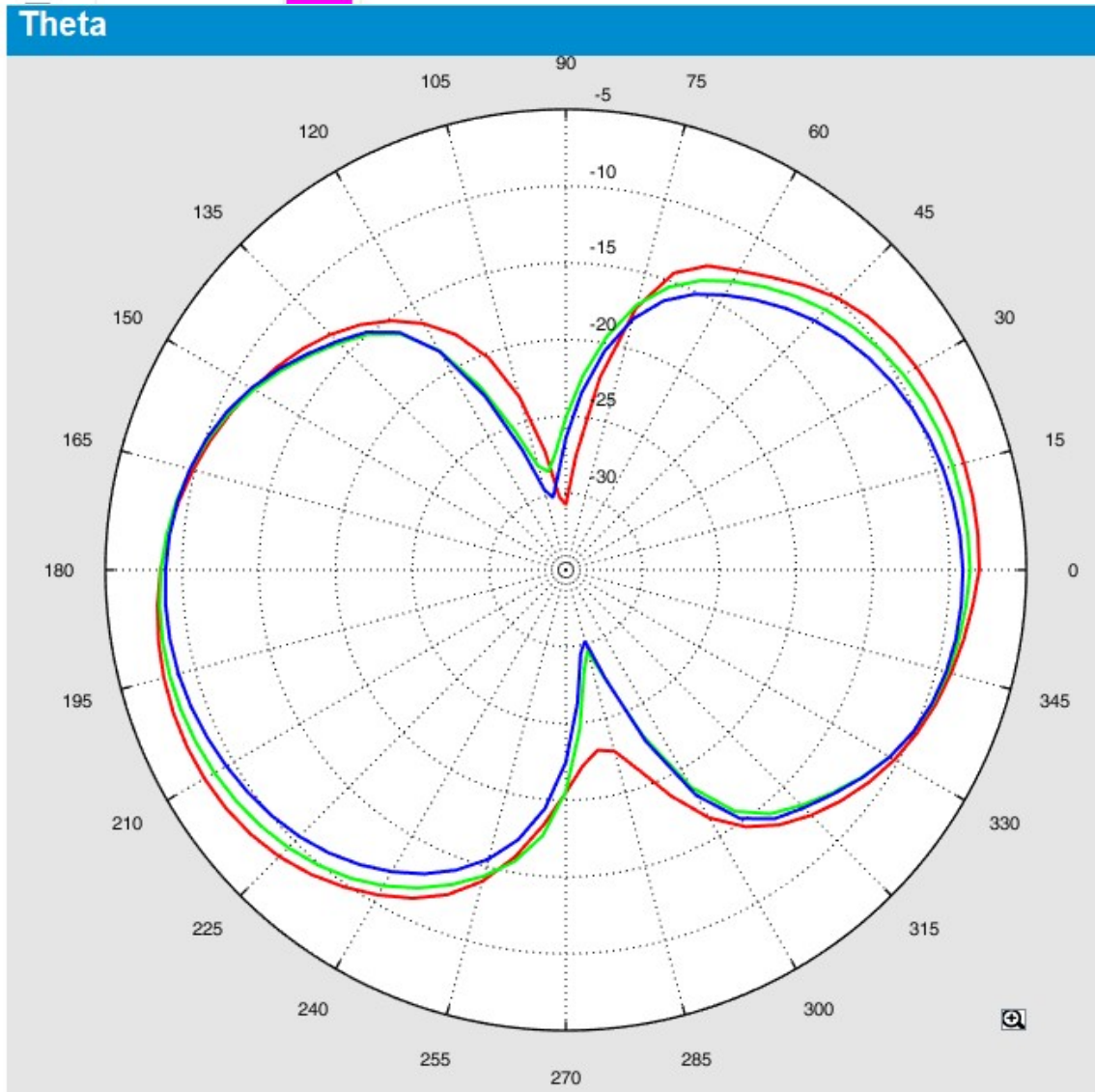
Center Frequency	Horizontal			Vertical		
	2400MHz	2450MHz	2500MHz	2400MHz	2450MHz	2500MHz
	-1.30	0.00	-0.52	-3.72	-1.43	-0.82
MAX. Gain	0 dBi					
Polarization	Horizontal and Vertical					



Controller RF Antenna

Horizontal:

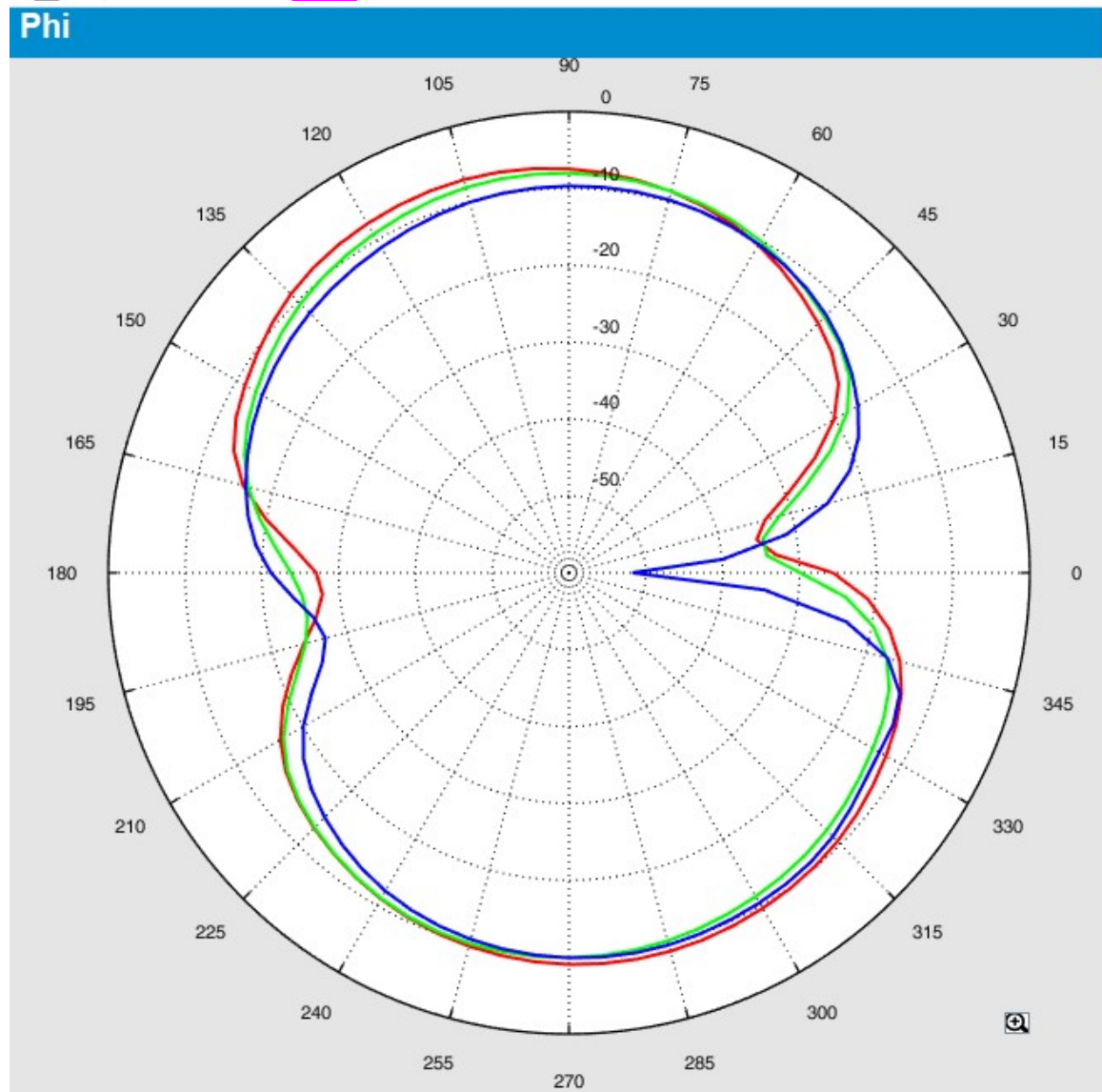
<input checked="" type="checkbox"/>	2.4GHz	000
<input checked="" type="checkbox"/>	2.45GHz	000
<input checked="" type="checkbox"/>	2.5GHz	000



Frequency (MHz)	Gain(dBi)		
	Max.	Min.	Avg.
2400	-1.3068	-15.0813	-7.66713
2450	0.00	-12.3587	-6.88202
2500	-0.5296	-16.1029	-4.55130

**Vertical:**

<input checked="" type="checkbox"/>	2.4GHz	000
<input checked="" type="checkbox"/>	2.45GHz	000
<input checked="" type="checkbox"/>	2.5GHz	000



Frequency (MHz)	Gain (dBi)		
	Max.	Min.	Avg.
2400	-3.7233	-13.1235	-10.5533
2450	-1.4322	-16.2255	-7.5879
2500	-0.8235	-19.5689	-8.1838