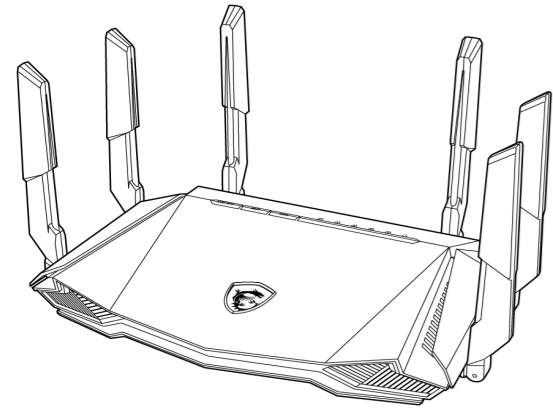




RadiX AXE6600

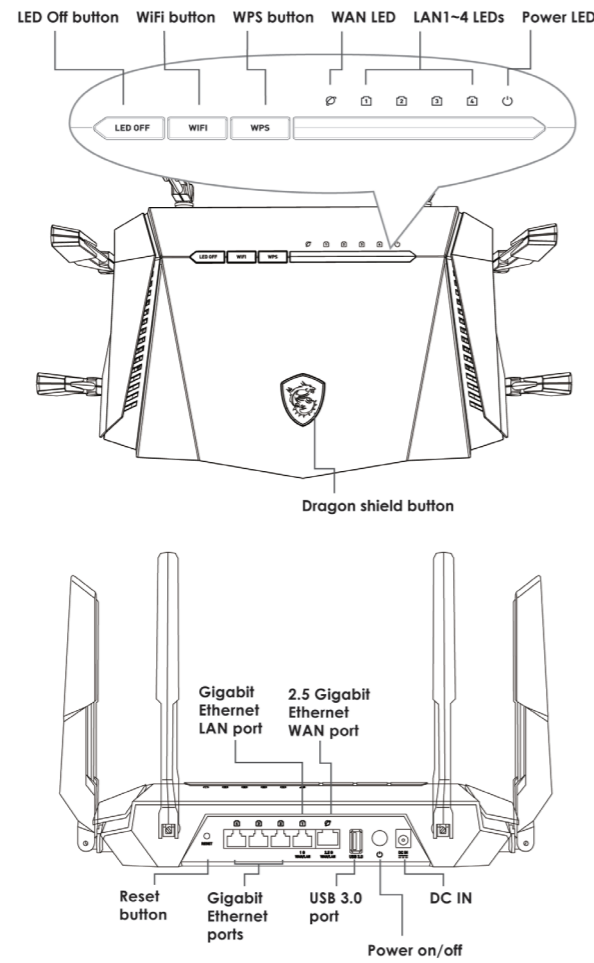
WiFi 6E Tri-Band Gaming Router



GRAXE66 Quick Start Guide

ENGLISH | 繁體中文 | 简体中文
日本語 | 한국어

Product Overview



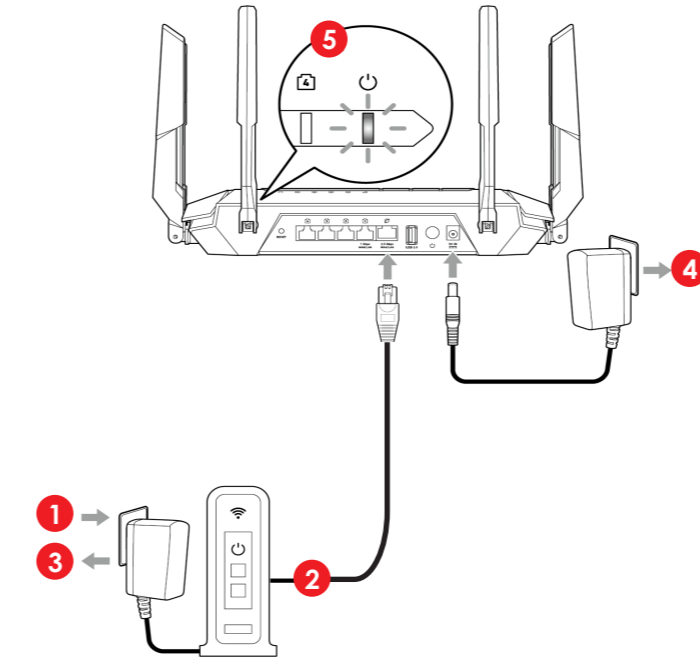
Dragon Shield Button and Antenna Lighting

EN	TC
Mode	模式
Default	預設
AI Auto	AI 自動優化
Gaming	電競
Streaming	影音串流
WFH	居家辦公
Traditional QoS	傳統 QoS
Status	狀態
Steady Red	紅色恒亮
Breathing Aqua	水藍色閃爍
Breathing Red	紅色閃爍
Breathing Purple	紫色閃爍
Breathing Blue	藍色閃爍
Breathing Orange	橘色閃爍

SC	KR
模式	모드
默认	기본
AI 自动	AI 오토
电竞	게이밍
流媒体	스트리밍
居家办公	회사회의
传统 QoS	사용자 설정
状态	상태
稳定红色	스테디 레드
闪烁浅绿色	브리딩 아쿠아
闪烁红色	브리딩 레드
闪烁紫色	브리딩 퍼플
闪烁蓝色	브리딩 블루
闪烁橙色	브리딩 오렌지

JP
モード
デフォルト
オート AI
ゲーミング
ストリーミング
在宅勤務
従来型 QoS
ステータス
赤色に点灯
水色にブリージング
赤色にブリージング
紫色にブリージング
青色にブリージング
オレンジ色にブリージング

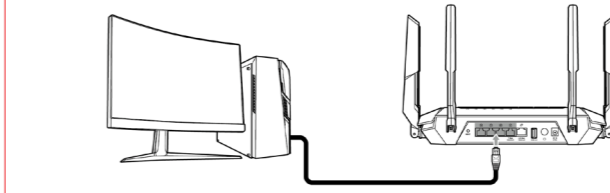
Hardware Installation



Option A

Initial Setup with PC / Laptop

6 Wired



OR
7 Wireless

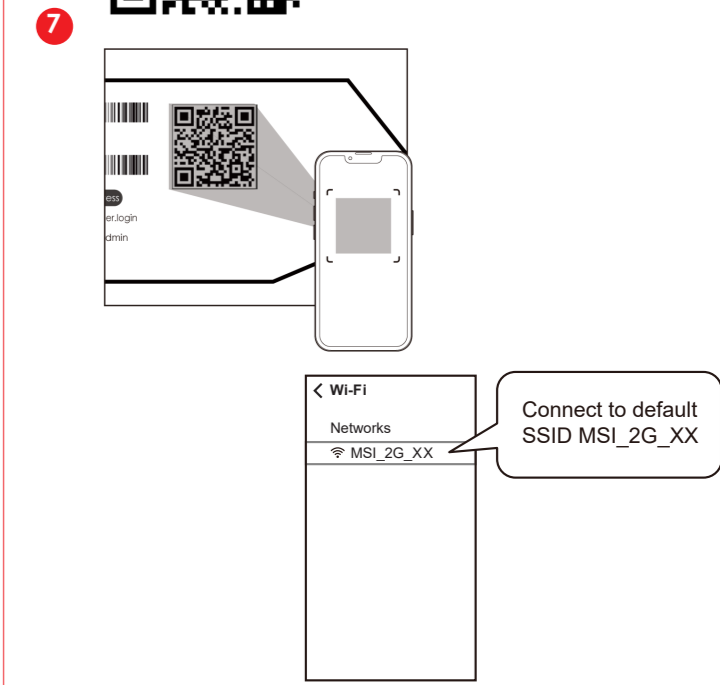


(XX indicates the last 2 digits of the device MAC address)



Option B

Initial Setup with Mobile Phone / Tablet



Micro-Star International Co., Ltd.

MSI

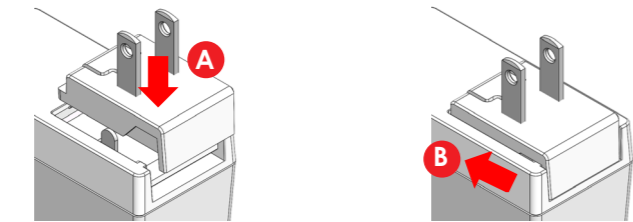
For more information about your router, you can download the user manual from <https://www.msi.com>.

MSI-Europe: Eindhoven 5706 5692 ER Son.
www.msi.com
Tel: +886-2-3234-5599 Fax: +886-2-3234-5488
No. 69, Lite St., Zhonghe Dist., New Taipei City 235, Taiwan

Package contents

- RadiX AXE6600 WiFi 6E Tri-Band Gaming Router
- Ethernet cable
- Power adapter (The plug type varies by country or region)

Adaptor Installation



- EN**
 - Align the power connector with the latch on the power adapter.
 - Push it all the way down. Make sure you hear a "click" sound.
- TC**
 - 轉接頭對齊底座卡榫
 - 推到底，確認有“咔”一聲
- SC**
 - 將适配器对准底座插榫。
 - 將其插入到底，確保听到“咔咯”一声。
- JP**
 - アダプターをベースのラッチに合わせます。
 - 「カチッ」という音になるまで下にスライドさせます。
- KR**
 - 어댑터를 베이스의 걸쇠에 맞춥니다.
 - 아래로 끝까지 삽입하십시오. "딸깍" 하는 소리가 들리는지 확인합니다.

- EN**
 - In order to use the Dragon Shield button, the AI QoS and Traditional QoS functions need to be enabled.
 - Press the Dragon Shield button to change the AI QoS mode. The light color will change as shown in the table above.
 - The Dragon Shield button can be pressed for 2 seconds to turn the lights on/off in both the antennas and the Dragon Shield.
- TC**
 - 使用龍盾按鈕前，AI QoS 和傳統 QoS 功能需要先啟用。
 - 按下按鈕以變更 AI QoS 模式，燈號顏色會如上表所示改變。
 - 按住 2 秒可將龍盾燈光開啟 / 關閉。
- SC**
 - 使用 Dragon Shield (龙盾) 按钮前，需要激活 AI QoS 和传统 QoS 功能。
 - 按下更改 AI QoS 模式，灯光颜色将如上表所示变化。
 - 按住 2 秒可打开 / 关闭天线和龙盾灯光。
- JP**
 - Dragon Shield (ドラゴンシールド) ボタンを使用する前に、AI QoS および Traditional QoS (従来の QoS) 機能を有効にする必要があります。
 - ボタンを押し、AI QoS モードを変更します。照明の色は、上の表のように変化します。
 - 2 秒間押し、アンテナと Dragon Shield (ドラゴンシールド) の照明をオン / オフに切り替えます。
- KR**
 - 드래곤 실드 버튼을 사용하기 전에 AI QoS 및 사용자 설정 QoS 기능을 작동시킬 필요가 있습니다.
 - 눌러서 AI QoS 모드로 변경합니다. 조명 색상은 위 표와 같이 변경됩니다.
 - 2초 동안 누른 상태로 안테나의 전원 및 드래곤 실드 조명을 켜거나 끕니다.

- EN**
 - Turn off or unplug the power from the cable/DSL modem.
 - Connect the modem to the LAN 1 port on your MSI router with an Ethernet cable.
 - Power on or plug in the modem to power. Check that the modem is properly functioning per its manufacturer's instructions.
 - Connect your MSI router to power by plugging the power adapter to the DC IN jack.
 - Press the power button and the power LED lights will turn on. Configure the initial setup with either Option A or Option B as directed in this Quick Start Guide.

- TC**
 - 拔除纜線 /DSL 數據機的電源。
 - 使用乙太網路線連接數據機和您的路由器。
 - 插上電源並開啟數據機，檢查數據機是否為作用中。
 - 將電源轉接器插到路由器的 DC IN 接頭。
 - 按下電源按鈕，當路由器準備就緒時，LED 燈號就會亮起。

- SC**
 - 拔除调制解调器的电源插头。
 - 用以太网线连接调制解调器和路由器。
 - 插上电源并启动调制解调器，检查机器是否正常运行。
 - 将适配器插入路由器的直流输入插孔。
 - 按下电源按钮，当路由器准备就绪时，LED 信号灯就会亮起。

- JP**
 - モデムの電源をオフにします。
 - イーサネットケーブルで、モデムとルーターを接続します。
 - 電源を接続して、モデムをオンに切り替えます。モデムがアクティブであることを確認します。
 - 電源アダプターをルーターの DC IN ジャックに接続します。
 - Power (電源) ボタンを押します。ルーターの準備ができると、電源 LED が点灯します。

- KR**
 - 케이블 /DSL 모뎀의 전원을 끕니다.
 - 이더넷 케이블로 모뎀과 라우터를 연결합니다.
 - 플러그를 꽂아서 모뎀의 전원을 켭니다. 모뎀이 작동 중인지 확인하십시오.
 - 라우터의 DC IN 잭에 어댑터의 플러그를 꽂아 주십시오.
 - 라우터의 준비가 되면 전원 버튼 및 전원 LED 조명을 눌러 주십시오.

- EN**
 - Connect your PC or laptop to the router with either a wired or wireless connection.
 - Open a web browser and go to <http://msirouter.login>

- TC**
 - 以有線或無線方式與您的 PC 或筆電連線。
 - 開啟網頁瀏覽器並前往 <http://msirouter.login>，預設使用者名稱和密碼可於貼在路由器上的標籤取得，依照畫面說明完成網路設定。

- SC**
 - 以有线或无线方式连接 PC 或笔记本电脑。
 - 打开 web 浏览器，访问 <http://msirouter.login>，默认用户名和密码可以在路由器标签上找到，按照屏幕说明完成网络设置。

- JP**
 - デスクトップ PC またはノート PC を有線または無線で接続します。
 - Web ブラウザを開き、<http://msirouter.login> にアクセスします。デフォルトのユーザー名とパスワードは、ルーターに貼り付けられたラベルに記載されています。画面の指示に従って、ネットワーク設定を完了します。

- KR**
 - PC 또는 노트북을 유선 또는 무선으로 연결하십시오.
 - 웹 브라우저를 열어서 <http://msirouter.login> 으로 가십시오. 사용자명과 비밀번호의 기본값은 라우터에 부착된 라벨에서 확인하실 수 있습니다. 화면상의 지시에 따라 네트워크 설정을 완료하십시오.

- EN**
 - Download the MSI router app from Google Play Store or App Store.
 - Launch the MSI router app and scan the QR code on the label of your router to connect to it via WiFi connection. Follow the on-screen instructions to complete network settings.

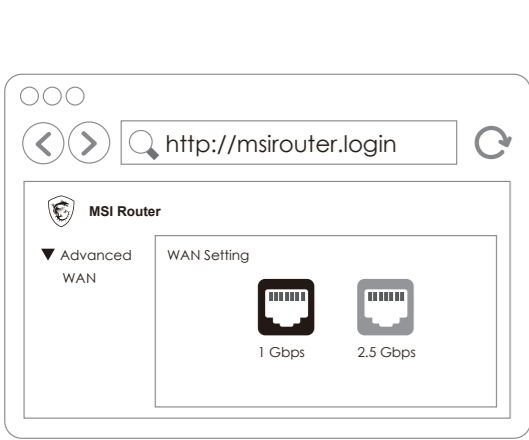
- TC**
 - 從 Google Play 商店或 App 商店下載 MSI 路由器應用程式。
 - 啟動 MSI 路由器應用程式並掃描路由器標籤上的 QR 碼，以透過 WiFi 連線至您的路由器，依照畫面說明完成網路設定。

- SC**
 - 从 Google Play Store 或 App Store 下载 MSI Router app。
 - 启动 MSI Router app，扫描路由器标签上的二维码，通过 WiFi 连接到路由器，按照屏幕说明完成网络设置。

- JP**
 - MSI Router アプリを Google Play Store または App Store からダウンロードします。
 - MSI Router アプリを起動し、ルーターのラベル上の QR コードをスキャンして、Wi-Fi 接続を介して、ルーターに接続します。画面の指示に従って、ネットワーク設定を完了します。

- KR**
 - MSI 라우터 앱은 Google Play Store 또는 App Store 로부터 다운로드해 주십시오.
 - MSI 라우터 앱을 기동해 라우터 라벨의 QR 코드를 스캔해서 라우터를 WiFi 접속으로 연결합니다. 화면상의 지시에 따라 네트워크 설정을 완료하십시오.

Switching 2.5G port to LAN (Optional)



Regulatory Statements

Federal Communications Commission Statement

This device complies with Part 15 of the FCC Rules. Operation is subject to the following two conditions:

- This device may not cause harmful interference.
- This device must accept any interference received, including interference that may cause undesired operation.

This equipment has been tested and found to comply with the limits for a class B digital device, pursuant to part 15 of the FCC Rules. These limits are designed to provide reasonable protection against harmful interference in a residential installation.

This equipment generates, uses and can radiate radio frequency energy and, if not installed and used in accordance with the instructions, may cause harmful interference to radio communications. However, there is no guarantee that interference will not occur in a particular installation. If this equipment does cause harmful interference to radio or television reception, which can be determined by turning the equipment off and on, the user is encouraged to try to correct the interference by one or more of the following measures:

- Reorient or relocate the receiving antenna.
- Increase the separation between the equipment and receiver.
- Connect the equipment into an outlet on a circuit different from that to which the receiver is connected.
- Consult the dealer or an experienced radio/TV technician for help.

CAUTION:

Any changes or modifications not expressly approved by the grantee of this device could void the user's authority to operate the equipment.

The availability of some specific channels and / or operational frequency bands are country dependent and are firmware programmed at factory to match the intended destination. The firmware setting is not accessible by the end user.

FCC regulations restrict the operation of this device to indoor use only.



The operation of this device is prohibited on oil platforms, cars, trains, boats, and aircraft, except that operation of this device is permitted in large aircraft while flying above 10,000 feet.

Operation of transmitters in the 5.925-7.125 GHz band is prohibited for control of or communications with unmanned aircraft systems.

RF Exposure Information

This equipment must be installed and operated in accordance with provided instructions and the antenna(s) used for this transmitter must be installed to provide a separation distance of at least 25 cm from all persons and must not be co-located or operating in conjunction with any other antenna or transmitter. End-users and installers must be provide with antenna installation instructions and transmitter operating conditions for satisfying RF exposure compliance.

Canada Compliance Statement

Industry Canada Equipment Standard for Digital Equipment (ICES) –Canada Compliance Statement

This Class B digital apparatus complies with Canadian ICES_003. CAN ICES-003 (B)/NMB-003(B)Cet appareil numérique de la classe B est conforme à la norme NMB_003 du Canada.

Innovation, Science and Economic Development Canada(ISED) Compliance Statement

This device complies with ISED’s licence-exempt RSS standard(s). Operation is subject to the following two conditions: (1) this device may not cause interference, and (2)this device must accept any interference, including interference that may cause undesired operation of the device.

Le présent appareil est conforme aux CNR d’ ISED applicables aux appareils radio exempts de licence.

L’exploitation est autorisée aux deux conditions suivantes :

(1) le dispositif ne doit pas produire de brouillage préjudiciable, et (2) ce dispositif doit accepter tout brouillage reçu, y compris un brouillage susceptible de provoquer un fonctionnement indésirable.

Caution:

User should also be advised that:

(i) the device for operation in the band 5150_5250 MHz is only for indoor use to reduce the potential for harmful interference to co_channel mobile satellite systems;

(ii) the maximum antenna gain permitted for devices in the bands 5250_5350 MHz and 5470_5725 MHz shall comply with the e.i.r.p. limit; and

(iii) the maximum antenna gain permitted for devices in the band 5725_5825 MHz shall comply with the e.i.r.p. limits specified for point_to_point and non point_to_point operation as appropriate. High_power radars are allocated as primary users (i.e. priority users) of the bands 5250_5350 MHz and 5650_5850 MHz and that these radars could cause interference and/or damage to LE_LAN devices.

Les utilisateurs devraient aussi être avisés que (i) les dispositifs fonctionnant dans la bande 5150_5250 MHz sont réservés uniquement pour une utilisation à l’intérieur afin de réduire les risques de brouillage préjudiciable aux systèmes de satellites mobiles utilisant les mêmes canaux;

(ii) le gain maximal d’antenne permis pour les dispositifs utilisant les bandes 5250_5350 MHz et 5470_5725MHz doit se conformer à la limite de e.i.r.p.;

(iii) le gain maximal d’antenne permis (pour les dispositifs utilisant la bande 5725_5825 MHz) doit se conformer à la limite de p.i.r.e. spécifiée pour l’exploitation point à point et non point à point, selon le cas. De plus, les utilisateurs de radars de haute puissance sont désignés utilisateurs principaux (c_à_d., qu’ils ont la priorité) pour les bandes 5250_5350 MHz et 5650_5850 MHz et que ces radars pourraient causer du brouillage et/ou des dommages aux dispositifs LAN_EL.



The operation of this device to indoor use only. The operation of this device is prohibited on oil platforms, cars, trains, boats, and aircraft, except that operation of this device is permitted in large aircraft while flying above 10,000 feet.

Utilisation limitée à l’intérieur seulement; Utilisation interdite à bord de plateformes de forage pétrolier, de voitures, de trains, de bateaux et d’aéronefs, sauf à bord d’un gros aéronef volant à plus de 10 000 pieds d’altitude.



Radio Frequency (RF) Exposure Information

The radiated output power of the Wireless Device is below the Innovation, Science and Economic Development Canada (ISED) radio frequency exposure limits. The Wireless Device should be used in such a manner such that the potential for human contact during normal operation is minimized. This device has also been evaluated and shown compliant with the ISED RF Exposure limits under mobile exposure conditions. (antennas are greater than 25 cm from a person's body).

informations concernant l’exposition aux fréquences radio (RF)
La puissance de sortie émise par l’appareil de sans fil est inférieure à la limite d’exposition aux fréquences radio d’ISED Canada (ISED). Utilisez l’appareil de sans fil de façon à minimiser les contacts humains lors du fonctionnement normal. Ce périphérique a également été évalué et démontré conforme aux limites d’exposition aux RF d’ISED dans des conditions d’exposition à des appareils mobiles (antennes sont supérieures à 25 cm à partir du corps d'une personne).

CE RED Compliance Statement

EU Simplified Declaration of Conformity

Hereby, msi Inc. declares that the radio equipment type GRAXE66 is in compliance with Directive 2014/53/EU.

The full text of the EU Declaration of conformity is available at the following internet address: https://www.msi.com/support

The device is restricted to indoor use only when operating in the 5150 to 5350 MHz & 5945 to 6425 MHz frequency range applicable in countries that support WiFi 6E.

RF Exposure Information
This equipment should be installed and operated with minimum distance 25 cm between the radiator & your body.



RED RF Output Power:

Technologies	Frequency range (MHz)	Max. Output Power(EIRP) dBm
WLAN 2.4 GHz	2400-2472 MHz	20
WLAN 5 GHz	5150-5250 MHz	23
WLAN 5 GHz	5250-5350 MHz	23
WLAN 5 GHz	5470-5725 MHz	30
WLAN 6 GHz	6115-6425 MHz	23

UKCA Compliance Statement

UKCA Simplified Declaration of Conformity

Hereby, msi Inc declares that the radio equipment type GRAXE66 is in compliance with the essential requirements and other relevant provisions of the Radio Equipment Regulations 2017.

The full text of the UK Declaration of Conformity may be found at the following internet address: https://www.msi.com/support



The device is restricted to indoor use only when operating in the 5150 to 5350 MHz & 5925–6425 MHz frequency range.

RF Exposure Information
This equipment should be installed and operated with minimum distance 25 cm between the radiator & your body.



IMPORTANT NOTE

For more information about your router, you can download the user manual from https://www.msi.com/support

Safety Instructions

Read the safety instructions carefully and thoroughly. All cautions and warnings on the equipment or user’s manual should be noted.

- Do not leave the Router in an unconditioned environment with a storage temperature above 60°C (140°F) or below 0°C (32°F), which may damage the router.
- This router should be operated under maximum ambient temperature of 35°C (95°F).

Power and Operating/Storage Specifications		
DC Power adapter	DC Output: + 12V with Max 3.5A current	
	Temperature	Humidity
Operating	0 ~ 40°C	50 ~ 90%
Storage	0 ~ 70°C	30 ~ 90%

EN The default 2.5G WAN port can be reconfigured as LAN to connect to a modem. Doing so will reconfigure the LAN 1 port to WAN. Log in to the MSI Router web utility. Then, go to **Advanced > WAN**. Then, select **1 Gbps** to set the LAN 1 port as WAN. The 2.5G port will automatically switch to LAN.

TC 預設的 2.5G WAN 連接埠可以設定為 LAN，同時將 LAN 1 切換為 WAN。登入至 MSI 路由器網頁管理介面，然後前往 **進階 > WAN**，選取 **1 Gbps** 將 LAN 1 連接埠設定為 WAN。2.5G 連接埠會自動切換為 LAN。

SC 默认 2.5G WAN 端口可配置为 LAN，而 LAN 1 切换到 WAN。登录 MSI 路由器网页用户界面，访问 **Advanced (高级)** > **WAN**，选择 **1 Gbps** 将 LAN 1 端口设置为 WAN。2.5G 端口将自动切换到 LAN。

JP デフォルトの 2.5G WAN ポートを LAN として構成し、LAN 1 を WAN に切り替えることができます。MSI Router の Web ユーティリティにログインします。次に、**[Advanced (高度な設定)]** > **[WAN]** に移動します。**[1 Gbps]** を選択して、LAN 1 ポートを WAN として設定します。2.5G ポートは自動的に LAN に切り替わります。

KR 기본값의 2.5G WAN 포트는 LAN 1 이 WAN 으로 변환된 동안에는 LAN 으로 설정할 수 있습니다. MSI Router 웹 유틸리티에 로그인합니다. 그리고 나서 **Advanced(고급)** > **WAN** 으로 갑니다. **1 Gbps** 를 선택해서 WAN 으로 LAN 1 포트를 설정합니다. 2.5G 포트는 자동으로 LAN 으로 변환됩니다.