



# IMMERSE GH20 WIRELESS

Model Name : BZC7

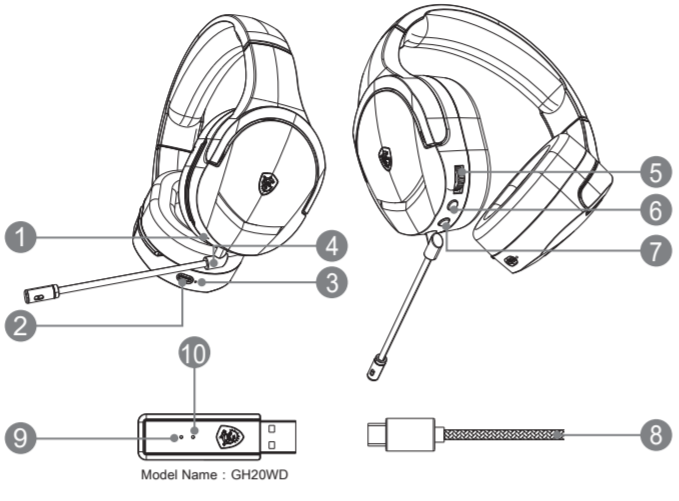
## English

### Introduction

Thank you for choosing the MSI IMMERSE GH20 WIRELESS. Get ready to enjoy an astonishing audio and gaming experience like none other. This guide provides instructions and illustrations to help you get the most out of this product as well as step by step instructions for first time setup.

During your first time connecting the headset to any PC, the operating system will automatically install the device driver. It is recommended to reboot the PC after the driver is installed.

### Product Overview



1. Reset Button
2. Charging Port (USB-C)
3. Charging Status Indicator
4. Mic Connector (Detachable Microphone)
5. Volume Control
6. Mic Mute / Pairing Button
7. Power Button
8. Charging Cable
9. Transmitter Status Indicator
10. Transmitter Pairing Button

## 繁體中文

### 簡介

感謝您選擇MSI IMMERSE GH20 WIRELESS。開始享受出眾的驚艷音效和電競體驗。本說明書提供使用說明及圖示，幫助您認識產品，以及首次使用設定說明。

第一次連接耳機至任何電腦時，作業系統會自行安裝驅動程式。驅動程式安裝完成後，建議將電腦重新啟動。

### 產品檢視

1. 重置按鈕
2. 充電埠 (USB-C)
3. 充電狀態指示燈
4. 麥克風連接埠 (可拆卸式麥克風)
5. 音量控制
6. 麥克風靜音 / 配對鍵
7. 電源按鈕
8. 充電線
9. 發射器配對指示燈
10. 發射器配對按鈕

### 設定

- 連接無線USB發射器於電腦上，並開啟耳機電源
- 當無線 USB 發射器插入電腦時，發射器狀態指示燈將亮起白色燈號：
  - 如果白燈恆亮：耳機與發射器已連線。
  - 如果白燈緩慢閃爍：耳機與發射器尚未連線。
  - 如果白燈快速閃爍：耳機與發射器正在配對。

### 控制說明

#### 電源按鈕

- 啟動耳機電源：按壓並維持3秒
- 關閉耳機電源：按壓並維持3秒
- 啟動耳機時電源按鈕指示燈會亮起白色燈號：
  - 白燈恆亮：耳機與無線 USB 發射器已連線。
  - 白燈緩慢閃爍：耳機與無線 USB 發射器尚未連線。
  - 白燈快速閃爍：耳機與無線 USB 發射器正在配對。

## 繁體中文

### 麥克風靜音 / 配對鍵

- 按下此按鈕可將麥克風靜音。如果此按鈕的紅色指示燈恆亮，則麥克風已靜音。
- 按下此按鈕可取消麥克風靜音。如果此按鈕的紅色指示燈熄滅，則麥克風取消靜音。

#### 音量控制

- 調高音量：向上滾動控制滾輪
- 調低音量：向下滾動控制滾輪

#### 重置按鈕

- 重置耳機：以尖頭狀的物體 (如別針) 插入孔洞中並推觸按鈕，可將耳機強制關機。

### 重新配對

- 按住電源按鈕3秒來啟動耳機。
- 按住耳機的麥克風靜音/配對按鈕3秒，電源按鈕白色燈號快速閃爍，表示耳機與無線 USB 發射器正在配對。
- 連接無線USB發射器至電腦上，此時發射器上的白色燈號持續緩慢閃爍。
- 以尖頭狀的物體 (如別針) 插入無線 USB 發射器上的孔洞中，推觸內部的按鈕2秒，發射器上的白色燈號快速閃爍。
- 耳機會發出提示音，表示已經進入配對模式。
- 耳機與無線 USB 發射器連接成功後，耳機電源鍵和發射器上的白色燈號同時保持恆亮。

### 電池使用時間 & 充電

- 耳機充電：以USB-C線連接充電埠和另一端的電力來源
- 充電狀態指示燈號：
  - 充電完成，燈號轉為綠色。
  - 充電中，紅色燈號恆亮。
  - 電量低，紅色燈號閃爍。

### 重要提示

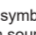
1. 最大輸入電壓為 5.5V。
2. 建議使用經認證且標有電壓值 5V 和電流 1A/1000mA 的充電插頭。
3. 當電力耗盡，請盡速為耳機充電。
4. 如長時間未使用耳機，建議於完全充滿後再行使用。
5. 建議以較為溫和和力道連接麥克風，避免對麥克風連接埠造成損傷
6. 請勿自行拆卸線皮，避免造成損傷。
7. 建議安裝 Nahimic for headset，享用耳機所有功能與系統同步的最佳體驗。

## BSMI Statement

1. Replacement of battery with an incorrect type that can defeat a safeguard (for example, in the case of some lithium battery types);
2. Disposal of a battery into fire or a hot oven, or mechanically crushing or cutting of a battery, that can result in an explosion;
3. Leaving a battery in an extremely high temperature surrounding environment that can result in an explosion or the leakage of flammable liquid or gas;
4. A battery subjected to extremely low air pressure that may result in an explosion or the leakage of flammable liquid or gas.

1. 置換可能影響安全防護的錯誤形式的電池(例:在某些電池類型的情形下);
2. 電池丟入火焰或烤箱中,或將電池作可能導致爆炸的機械擠壓或切割;
3. 電池至於可能導致爆炸或可燃性氣體或氣體洩漏的高溫環境中;且
4. 電池承受可能導致爆炸或可燃性氣體或氣體洩漏的極度低氣壓。

- 要素 1a: 符號  IEC 60417-6044 (2011-01)
- 要素 2: "高聲壓"或同義語句
- 要素 3: "聽覺損傷風險"或同義語句
- 要素 4: "請勿長時間收聽高音量"或同義語句

- element 1a: the symbol  IEC 60417-6044 (2011-01)
- element 2: "High sound pressure" or equivalent wording
- element 3: "Hearing damage risk" or equivalent wording
- element 4: "Do not listen at high volume levels for long periods." or equivalent wording

## English

### Setup

- Connect the Wireless USB Transmitter to the PC, then turn on the headset.
- The Transmitter Status Indicator will illuminate when the Wireless USB Transmitter is plugged in.
  - If the white light stays on: the headset is connected.
  - If the white light flashes slowly: the headset is disconnected.
  - If the white light flashes quickly: the headset and the transmitter are pairing.

### Controls

#### Power Button

- To power on: press and hold for 3 seconds.
- To power off: press and hold for 3 seconds.
- The Power Button will illuminate when the headset is turned on:
  - The white light stays on: the headset is connected to the transmitter.
  - The white light flashes slowly: the headset is disconnected from the transmitter.
  - The white light flashes quickly: the headset is pairing.

#### Mic Mute / Pairing Button

- Press to mute the microphone. If the red light is on, the mic is muted.
- Press to unmute the microphone. If the red light is off, the mic is not muted.

#### Volume Control

- To turn up the volume: scroll up on the control wheel.
- To turn down the volume: scroll down on the control wheel.

### Re-pairing

- Press and hold the power button for 3 seconds to turn on the headset.
- Press and hold the mute button for 3 seconds until the white light on the power button starts flashing quickly.
- Connect the Wireless USB Transmitter to the PC until its white light flashes slowly.
- Insert a pointed object such as a pin into the hole on the transmitter and push the button for 2 seconds until the white light flashes quickly.
- The headset will make a sound to indicate that pairing mode has been entered.
- When successfully paired, the white lights on the headset and Wireless USB Transmitter will stay as a steady white light.

## FCC-B Radio Frequency Interference Statement



This equipment has been tested and found to comply with the limits for a Class B digital device, pursuant to part 15 of the FCC rules. These limits are designed to provide reasonable protection against harmful interference in a residential installation.

This equipment generates, uses and radiates radio frequency energy, and, if not installed and used in accordance with the instructions, may cause harmful interference to radio communications. However, there is no guarantee that interference will not occur in a particular installation. If this equipment does cause harmful interference to radio or television reception, which can be determined by turning the equipment off and on, the user is encouraged to try to correct the interference by one or more of the following measures:

- ▶ Reorient or relocate the receiving antenna.
- ▶ Increase the separation between the equipment and receiver.
- ▶ Connect the equipment into an outlet on a circuit different from that to which the receiver is connected.
- ▶ Consult the dealer or an experienced radio/TV technician for help.

#### NOTE

- ▶ The changes or modifications not expressly approved by the party responsible for compliance could void the user's authority to operate the equipment.
- ▶ Shield interface cables and AC power cord, if any, must be used in order to comply with the emission limits.

## FCC Conditions

This device complies with part 15 of the FCC Rules. Operation is subject to the following two conditions:

- ▶ This device may not cause harmful interference.
- ▶ This device must accept any interference received, including interference that may cause undesired operation.

FCC ID: 14L-8ZC7  
FCC ID: 14L-GM20WD

## RF Exposure Statements

This Transmitter must not be co-located or operating in conjunction with any other antenna or transmitter.

## 限用物質含有情況標示聲明書 Declaration of the Presence Condition of the Restricted Substances Marking

設備名稱：無線耳機·型號(款式)：BZC7 Equipment name	Type designation (Type)					
	限用物質及其化學符號 Restricted substances and its chemical symbols					
單元 Unit	鉛 Lead (Pb)	汞 Mercury (Hg)	鎘 Cadmium (Cd)	六價鉻 Hexavalent chromium (Cr <sup>6+</sup> )	多環芳烴 Polycyclic aromatic hydrocarbons (PAH)	多環二噁英 Polychlorinated dibenzofuran ethers (PCDF)
	印刷電路及電子元件	—	○	○	○	○
外殼	○	○	○	○	○	○
滾輪裝置	○	○	○	○	○	○
無極接收器及配件	—	○	○	○	○	○

備註1: "超出0.1 wt %"及"超出0.01 wt %"係指限用物質百分比含量超出百分比含量基準值。  
Note 1: "Exceeding 0.1 wt %" and "exceeding 0.01 wt %" indicate that the percentage content of the restricted substance exceeds the reference percentage value of presence condition.  
備註2: "○" 係指該項限用物質之百分比含量未超出百分比含量基準值。  
Note 2: "○" indicates that the percentage content of the restricted substance does not exceed the percentage of reference value of presence.  
備註3: "—" 係指該項限用物質無檢附項目。  
Note 3: The "-" indicates that the restricted substance corresponds to the exemption.

### 產品中有毒有害物質或元素的名稱及含量


部件名稱	有害物質					
	鉛 (Pb)	汞 (Hg)	鎘 (Cd)	六價鉻 (Cr (VI))	多環芳烴 (PAH)	多環二噁英 (PCDF)
印刷電路板組件*	○	○	○	○	○	○
外殼及附件	○	○	○	○	○	○

○：表示該有毒有害物質在該部件所有均質材料中的含量均在 SJ/T11363 2006 標準規定的限量要求以下。

\* 本表只表示該有毒有害物質最少在該部件的某一均質材料中的含量超出 SJ/T11363 2006 標準規定的限量要求。

† 印刷電路板組件：包括印刷電路板及其零部件、電子元件等。

表中標有 "X" 的所有部件都符合歐盟 RoHS 法規。

 在中華人民共和國境內銷售的電子產品必須標示此標誌。標誌內的數字表示在正常的使用狀態下的產品環保使用年限。

## English

### Battery Life & Charging

- To charge the headset: connect the USB-C cable to the charging port and the other end to a power source.
- Charging Status Indicator:
  - When fully charged, the light turns green.
  - When charging, the red light stays on.
  - When the battery is low, the red light flashes.

### Notice

#### Important

1. The maximum input voltage is 5.5V
2. Chargers labeled with 5V voltage and 1A/1000mA current purchased from official channels are recommended.
3. When the battery is exhausted, please recharge the headset as soon as possible.
4. It is recommended to fully charge the headset if it is not in use for a long time.
5. It is recommended to connect the microphone gently to prevent damage to the connector.
6. Please do not disassemble the product since it may cause damages.
7. It is recommended to install Nahimic for Headset to enjoy the best experience with full functionality and synchronization to the operating system.

## Wireless Headset

Operating Frequency: 2405.889-2477.569MHz

Output power: xx dBm

## EU compliance statement

**English:** MSI Inc. hereby declares that this wireless device is in compliance with Directive 2014/53/EU.

**Français:** MSI Inc. déclare par la présente que ce dispositif sans fil est conforme à la Directive 2014/53/UE.

**Deutsch:** Hiermit erklärt MSI Inc., dass sich dieses drahtlose Gerät in Übereinstimmung mit der Richtlinie 2014/53/EU befindet.

**Italiano:** MSI, Inc. dichiara che questo dispositivo wireless è conforme alla Direttiva 2014/53/UE.

**Español:** Por medio de la presente, MSI Inc. declara que este dispositivo inalámbrico cumple con la Directiva 2014/53/UE.

## JAPAN VCCI CLASS B STATEMENT

この装置は、クラスB情報技術装置です。この装置は、家庭環境で使用することを目的としていますが、この装置がラジオやテレビジョン受信機に近接して使用されると、受信障害を引き起こすことがあります。取扱説明書に従って正しく取り扱いをして下さい。VCCI-B

本製品は、EMC準拠の周辺機器およびシステムコンポーネント間にシールドケーブル（イーサネットフックケーブル）が使用されている状態で、EMCへの準拠が実証されています。ラジオ、テレビ、およびその他の電子機器への干渉が発生する可能性を低減するため、EMC準拠の周辺機器およびシステムコンポーネント間にシールドケーブルを使用することが重要です。

重要：MSIの許諾を得ることなく本製品に変更または変更を加えると、電磁両立性（EMC）および無線に準拠しなくなり、製品を操作するための許諾が取り消されるおそれがあります。



XXX-XXXXXX

## NCC警語

取得警語證明之低功率射頻器材，非經核准，公司、商號或使用者均不得擅自變更頻率、加大功率或變更原設計之特性及功能。低功率射頻器材之使用不得影響飛航安全及干擾合法通信；經發現有干擾現象時，應立即停用，並改善至無干擾時方得繼續使用。前述合法通信，指依電信管理法規定位作業之無線電通信。低功率射頻器材應受合法通信或工業、科學及醫療用電波輻射性電機設備之干擾。

XXXXXXXXXXXX

## ISED Compliance Statement

This device contains licence-exempt transmitter(s)/receiver(s) that comply with Innovation, Science and Economic Development Canada's licence-exempt RSS(s). Operation is subject to the following two conditions: (1)This device may not cause interference.(2)This device must accept any interference, including interference that may cause undesired operation of the device.

L'émetteur/récepteur exempt de licence contenu dans le présent appareil est conforme aux CNR d'Innovation, Sciences et Développement économique Canada applicables aux appareils radio exempts de licence. L'exploitation est autorisée aux deux conditions suivantes: (1)L'appareil ne doit pas produire de brouillage; (2)l'appareil doit accepter tout brouillage radioélectrique subi, même si le brouillage est susceptible d'en compromettre le fonctionnement.

## IC 3715A-8ZC7

3715A-GH20WD

CAN ICES-003(B)/NBM-003(B)

This Class B digital apparatus complies with Canadian ICES-003.

Cet appareil numérique de la classe B est conforme a la norme ICES-003 du Canada.

## IC Exposure

The equipment complies with IC RF exposure limits set forth for an uncontrolled environment and must not be co-located or operating in conjunction with any other antenna or transmitter.

L'équipement est conforme aux limites d'exposition RF d'IC établies pour un environnement non contrôlé et ne doit pas être situé ou fonctionner en conjonction avec une autre antenne ou un autre émetteur. Les utilisateurs peuvent obtenir des informations canadiennes sur l'exposition aux RF et la conformité.

**msi**

Micro-Star International Co., Ltd.

No.69, Lide St., Zhonghe Dist., New Taipei City 235,  
tel:+886-2-3234-5599 fax:+886-2-3234-5488  
www.msi.com