

Thank you for using Aztech KylaS product! Please keep this Easy Start Guide for future use. For support or help, visit kylas.aztech.com

DISCLAIMER

Aztech Technologies Pte Ltd, its holding company and its associated companies (hereinafter referred to collectively as "Aztech") does not guarantee that adequate warning or protection will be given, and disclaims all warranties and representations, whether expressed, implied or otherwise statutory, concerning the product, including without limitation any warranty of merchantability or fitness for a particular purpose. Aztech shall not be liable in any event for any consequential, indirect, incidental, special, exemplary, punitive or enhanced damages resulting from the use, maintenance or operation of the product.

Aztech makes no warranty or representation that the product constitutes a fire alarm system or is compliant with any requirements prescribed by any applicable state or laws, codes, regulations and/or other specifications that may be set out by relevant authorities having jurisdiction (collectively referred to as "regulations"). You shall be solely responsible for compliance with all regulations.

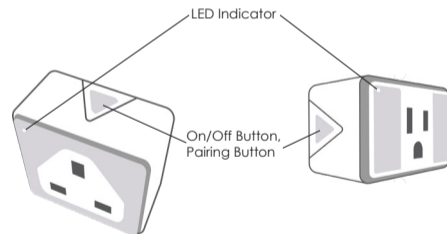
To the maximum extent permitted by applicable law, you agree to hold harmless and indemnify, including legal fees, Aztech and Aztech's personnel against any third party claims or fines by authorities that arise or are alleged to have arisen as a result of negligent or intentional act or omission by you or breach by you of any the terms herein or any violation of any regulations.

PACKAGE CONTENTS

- WiFi Plug
- Easy Start Guide
- Warranty Card

PRODUCT DESCRIPTION

The KylaS WiFi Plug can be used to switch any device on or off when plugged in. Through the KylaS app, you can control the device anytime and anywhere.



PRODUCT FEATURES

Remote Control: Turn the WiFi Plug on or off via the app while connected to WiFi

Timer: Set a timer to turn the WiFi Plug on or off via the app

Countdown: Set a countdown to turn the WiFi Plug on or off via the app

IMPORTANT SAFETY INFORMATION

- Maximum power for KWFP-210-WF (UK) should be no more than 2990W, and maximum circuit should be no more than 13A. Otherwise, overheating may cause fire.
- Maximum power for KWFP-220-WF (US) should be no more than 1100W, and maximum circuit should be no more than 10A. Otherwise, overheating may cause fire.
- Not for humid or wet places such as bathroom and green house.

OPERATION GUIDE

1. Download the Aztech KylaS App from Google Play/App Store.
Requirement:
- iOS 11 or later
- Android 4.4 or later



2. Power on the device by switching on the power supply. The device will be in Pairing Mode with blinking red LED. If it does not, check the power source, or press and hold the Pairing button for more than 5 seconds until the LED blinks in red.
3. Login to the Aztech KylaS, and add "WiFi Plug" to the device list by following the setup guide on the app.
4. When paired successfully, the LED stops blinking.

PUTTING THE DEVICE IN PAIRING MODE

Put the device in Pairing Mode via one of the following methods:

- Power on the device for the first time.
- Press and hold the Pairing button for more than 5 seconds.

After 90 seconds idle, the device exits pairing mode and returns to the previous mode.

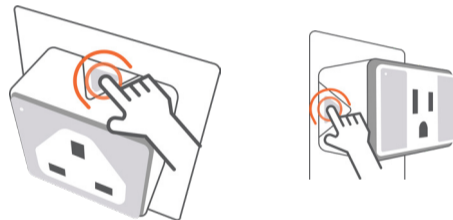
POWERING ON AND OFF THE DEVICE

1. To power on, press the **Pairing** button on the device once, the green LED lights up.
2. To power off, press the **Pairing** button on the device again, the green LED turns off.



RESETTING THE WIFI PLUG

Press the button for more than 5 seconds until LED blinks in red, which means the device has cleared the current network and is ready to connect to a new network.



LED STATUS

COLOUR	STATUS	REMARK
Green	On	Power on, Connected to WiFi network
	Blinking (1s on, 1s off)	Power on, Not connected to WiFi network
Red	Blinking (<0.2s on, <0.2s off)	Connecting to WiFi network
Green & Red	Off	Power off

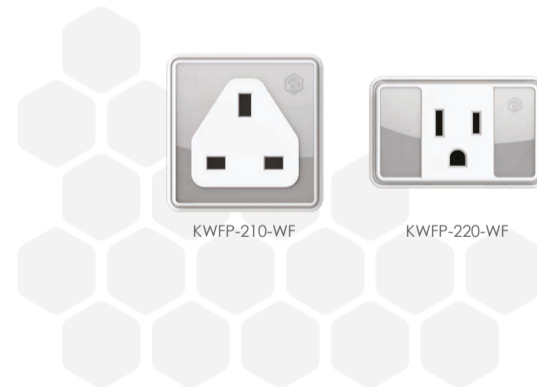
TECHNICAL SPECIFICATIONS

Product Name	WiFi Plug UK	WiFi Plug US
Model No.	KWFP-210-WF	KWFP-220-WF
Input	100–240VAC, 50/60Hz, 13A	100–120VAC 60Hz, 10A
Operating Temperature	0–40°C	
Operating Humidity	10–90% RH	
Connectivity	2.4 GHz WiFi	
Wireless Standard	802.11b/g/n	
Material of Housing	PC, White	
Product Dimensions	L29.7 x W60.5 x H60 (mm)	L32 x W66 x H38 (mm)
Certificate(s)	CE, IMDA	UL, FCC



WIFI PLUG

EASY START GUIDE



FCC ID: I38KWFP220WF

FCC statement

This equipment has been tested and found to comply with the limits for a Class B digital device, pursuant to Part 15 of the FCC Rules. These limits are designed to provide reasonable protection against harmful interference in a residential installation. This equipment generates, uses and can radiate radio frequency energy and, if not installed and used in accordance with the instructions, may cause harmful interference to radio communications.

However, there is no guarantee that interference will not occur in a particular installation.

- If this equipment does cause harmful interference to radio or television reception, which can be determined by turning the equipment off and on, the user is encouraged to try to correct the interference by one or more of the following measures:

- Reorient or relocate the receiving antenna.

- Increase the separation between the equipment and receiver.

- Connect the equipment into an outlet on a circuit different from that to which the receiver is connected.

- Consult the dealer or an experienced radio/TV technician for help.

This device complies with part 15 of the FCC Rules. Operation is subject to the following two conditions: (1) This device may not cause harmful interference, and (2) this device must accept any interference received, including interference that may cause undesired operation.

CAUTION: Any changes or modifications not expressly approved by the grantee of this device could void the user's authority to operate the equipment.

RF exposure warning

This equipment complies with FCC radiation exposure limits set forth for an uncontrolled environment.

This equipment must be installed and operated in accordance with provided instructions and the antenna(s) used for this transmitter must be installed to provide a separation distance of at least 20 cm from all persons and must not be co-located or operating in conjunction with any other antenna or transmitter.