

Thank you for using Kyla product! Please keep this Easy Start Guide for future use. For support or help, visit [kylaconnect.com](http://kylaconnect.com)

## DISCLAIMER

Aztech Technologies Pte Ltd, its holding company and its associated companies (hereinafter referred to collectively as "Aztech") does not guarantee that adequate warning or protection will be given, and disclaims all warranties and representations, whether expressed, implied or otherwise statutory, concerning the product, including without limitation any warranty of merchantability or fitness for a particular purpose. Aztech shall not be liable in any event for any consequential, indirect, incidental, special, exemplary, punitive or enhanced damages resulting from the use, maintenance or operation of the product.

The manufacturer makes no warranty or representation that the product constitutes a fire alarm system or is compliant with any requirements prescribed by any applicable state or laws, codes, regulations and/or other specifications that may be set out by relevant authorities having jurisdiction (collectively referred to as "regulations"). You shall be solely responsible for compliance with all regulations.

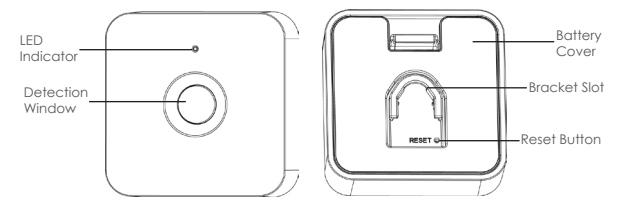
To the maximum extent permitted by applicable law, you agree to hold harmless and indemnify, including legal fees, the manufacturer and their personnel against any third party claims or fines by authorities that arise or are alleged to have arisen as a result of negligent or intentional act or omission by you or breach by you of any the terms herein or any violation of any regulations.

## PACKAGE CONTENTS

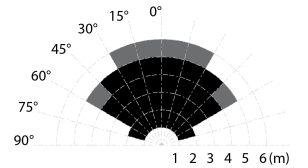
- Smart Motion Sensor X1
- Wall Bracket X1
- Ball Joint X1
- Plastic Anchor X2
- Screw X2
- Easy Start Guide X1
- Warranty Card X1

## PRODUCT DESCRIPTION

The Smart Motion Sensor can detect heat and movement in the surrounding areas based on the human body's infrared spectrum detection technology, creating a protective "grid". If a moving object blocks too many grid zones and the infrared energy levels change rapidly, the sensor is triggered. Pair with the Smart Hub and Kyla App for an integrated home monitoring system.



## DETECTION RANGE



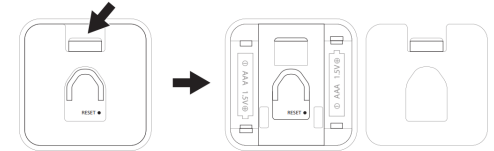
NOTE: Maximum up to 8 metres.

## INSTALLATION TIPS

1. Choose the correct installation direction. The infrared sensor has the highest detection sensitivity when perpendicular to the walking direction. To achieve the best results, please choose the most appropriate position and direction according to the actual situation and reference range diagram for installation.
2. Do not point towards heat or cold sources The infrared detection is closely related to temperature. An unstable ambient temperature may trigger a false alarm. Therefore, the infrared devices should be installed away from heaters, air conditioners, refrigerators or any possible heat and cold sources.
3. Do not point towards moving objects. Moving objects may trigger a false.
4. Recommended installation height: 2m above ground.

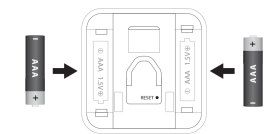
## BATTERY PLACEMENT

1. Remove back cover.



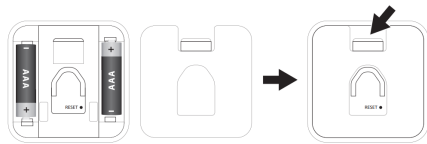
2. Place battery.

Insert the batteries according to the positive (+) and (-) side indicated on the device.

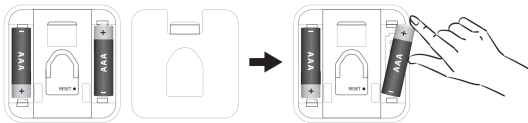


### 3. Replace cover.

Place the back cover and push to lock.



### 4. Battery Removal.



NOTE: LED will blink for 10 seconds to indicate low battery power.  
The estimated battery standby time is 8 to 12 months.

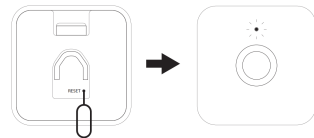
### PAIRING THE DEVICE

1. Download and sign in to Kyla App from Google Play/App Store.  
Requirement:

- iOS 12.0 or later
- Android 5.0 or later



2. Press and hold the reset button for at least 5 seconds until Red LED starts to blink.

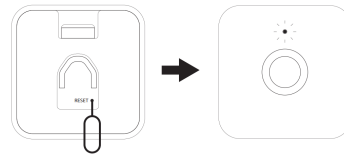


3. From the App, select Add Device > Sensors > Smart Motion Sensor > (select existing Smart Hub) Pair

NOTE: This device only works with a Smart Hub. If the device is undetectable, reset the device and try again.

### RESETTING THE DEVICE

Press and hold the reset button for at least 5 seconds until Red LED starts to blink.



NOTE: LED will blink rapidly for approximately 30 seconds before connection time-out.

### TECHNICAL SPECIFICATIONS

|                        |                                |
|------------------------|--------------------------------|
| Power Supply           | 2V DC                          |
| Battery Type           | AAA x 2                        |
| Operating Temperature  | ~ 10-50 °C                     |
| Operating Humidity     | 10 % - 90 % RH                 |
| Sensor Type            | PIR Sensor                     |
| Connectivity           | Zigbee                         |
| Key Button (s)         | Physical Button (Pair/Reset)   |
| Indicator Light(s)     | Indication LED X1 , Red        |
| Field of View          | 110 °C                         |
| Communication Distance | 10m to Hub (indoor)            |
| Casing Material        | PC and ABS                     |
| Mounting Type          | Wall plate with ball joint     |
| Product Dimensions     | 28.3 mm x 40 mm x 23.8 mm      |
| Security               | Authentication through the App |



## SMART MOTION SENSOR

### EASY START GUIDE



## **FCC Statement**

1. This device complies with Part 15 of the FCC Rules. Operation is subject to the following two conditions:

(1) This device may not cause harmful interference.

(2) This device must accept any interference received, including interference that may cause undesired operation.

2. Changes or modifications not expressly approved by the party responsible for compliance could void the user's authority to operate the equipment.

### **NOTE:**

This equipment has been tested and found to comply with the limits for a Class B digital device, pursuant to Part 15 of the FCC Rules. These limits are designed to provide reasonable protection against harmful interference in a residential installation.

This equipment generates uses and can radiate radio frequency energy and, if not installed and used in accordance with the instructions, may cause harmful interference to radio communications. However, there is no guarantee that interference will not occur in a particular installation. If this equipment does cause harmful interference to radio or television reception, which can be determined by turning the equipment off and on, the user is encouraged to try to correct the interference by one or more of the following measures:

Reorient or relocate the receiving antenna.

Increase the separation between the equipment and receiver.

Connect the equipment into an outlet on a circuit different from that to which the receiver is connected.

Consult the dealer or an experienced radio/TV technician for help.

## **Body-worn Operation**

This device was tested for typical body-worn operations. To comply with RF exposure requirements, a minimum separation distance of **5mm** must be maintained between the user's body and the handset, including the antenna. Third-party belt-clips, holsters, and similar accessories used by this device should not contain any metallic components. Body-worn accessories that do not meet these requirements may not comply with RF exposure requirements and should be avoided. Use only the supplied or an approved antenna.