

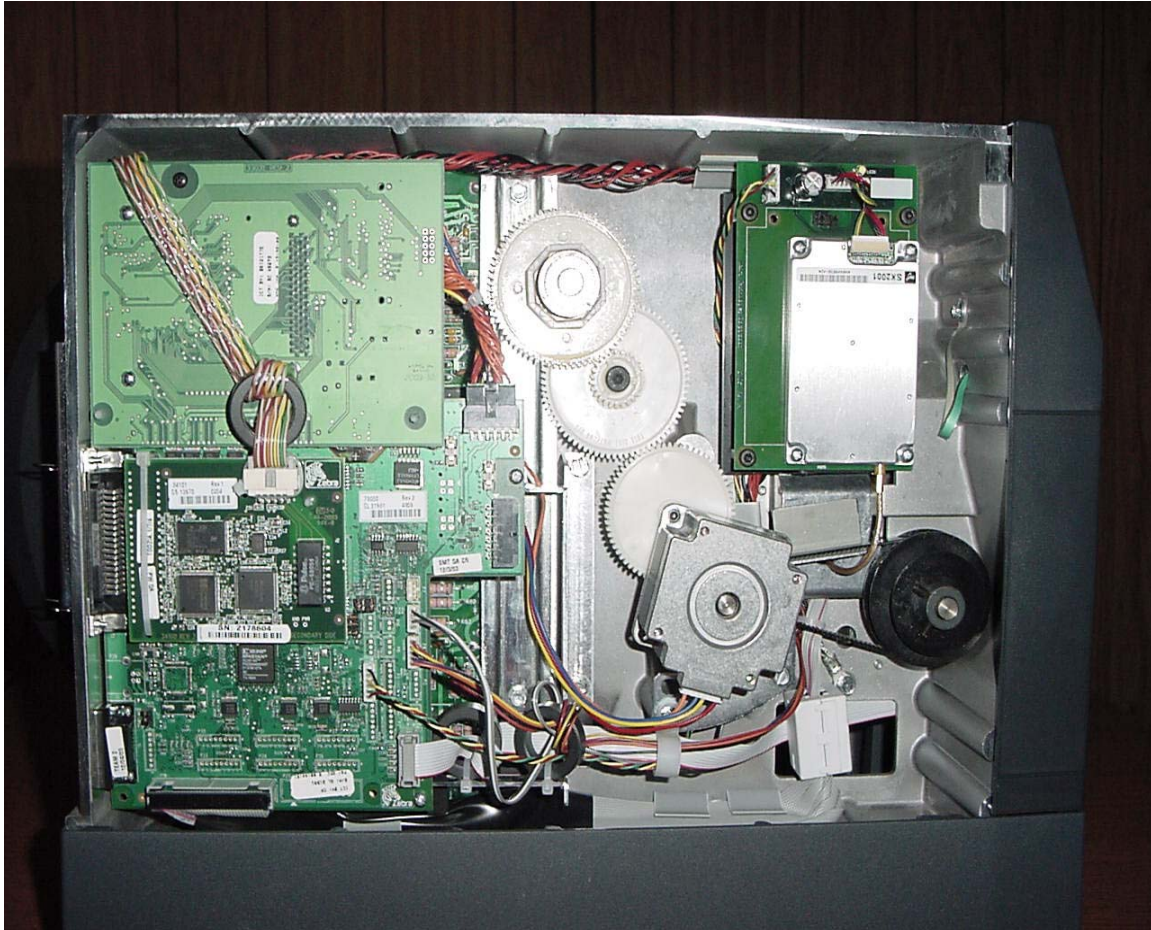
Company: Zebra Technologies

Product: R4M+

FCC ID#: I28RFID-Z45-01

Date: 1/22/2004

Photo Description: Left Side of EuT, Cover Removed



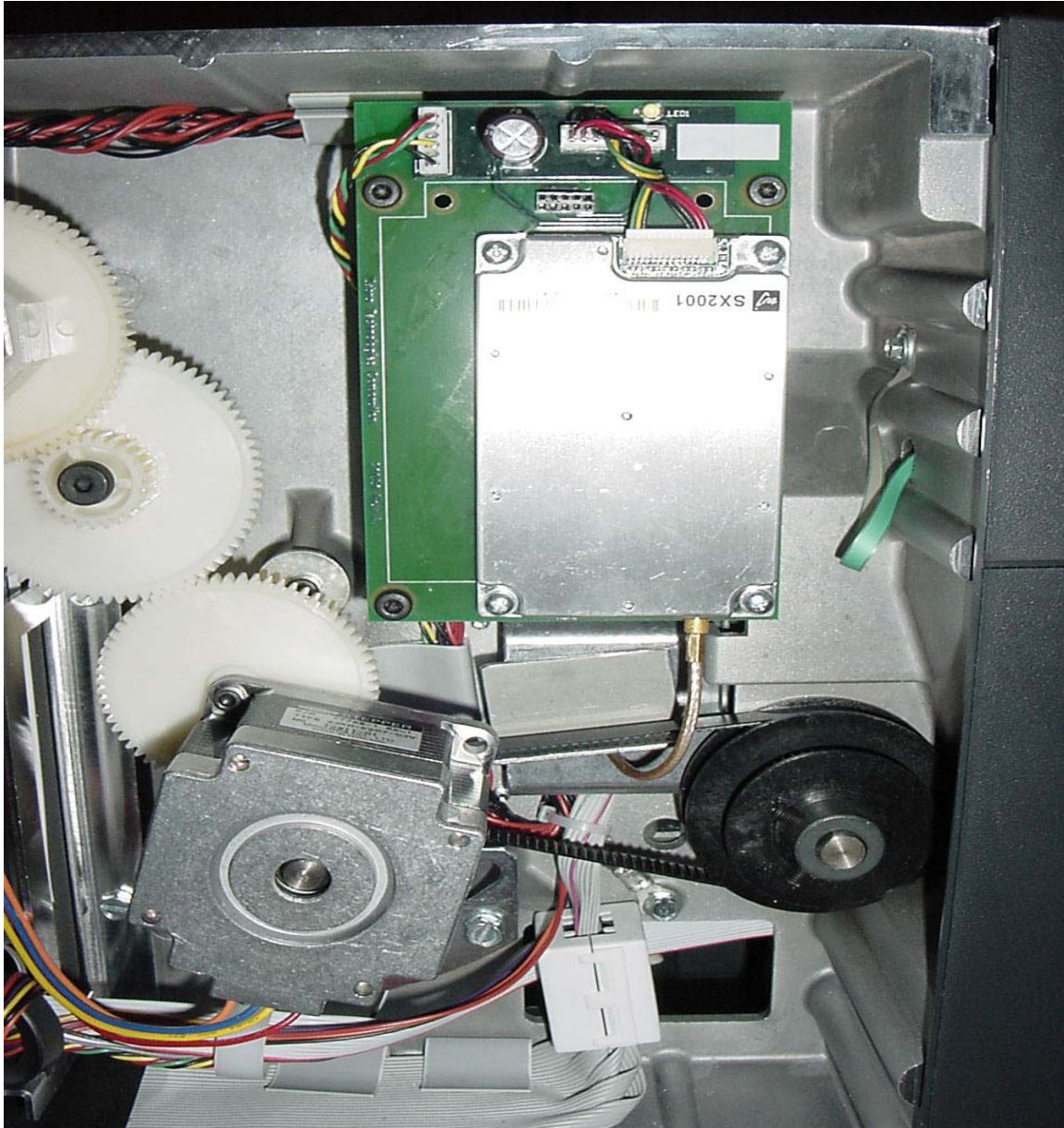
Company: Zebra Technologies

Product: R4M+

FCC ID#: I28RFID-Z45-01

Date: 1/22/2004

Photo Description: Reader Card Tx Placement in EuT



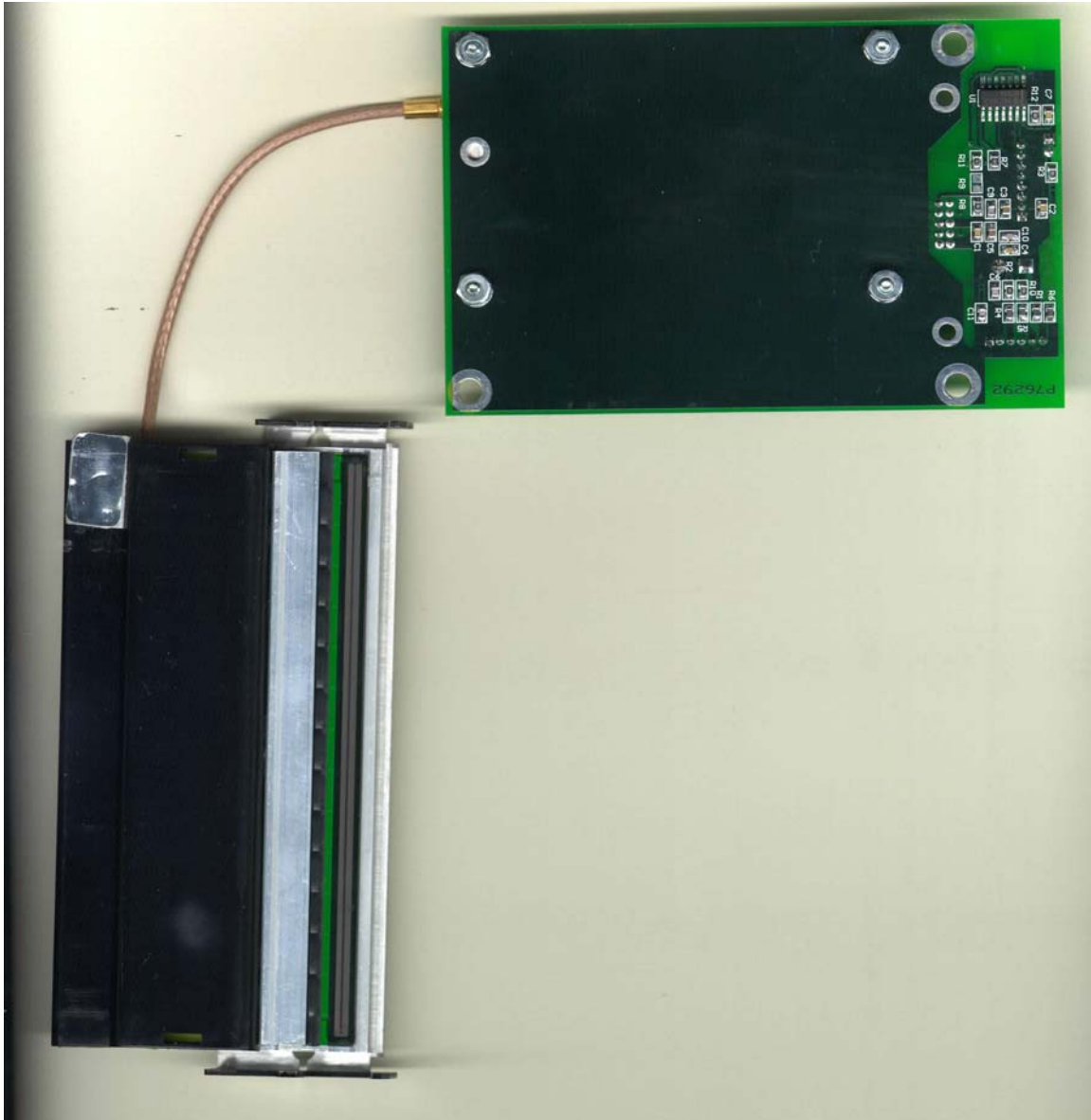
Company: Zebra Technologies

Product: R4M+

FCC ID#: I28RFID-Z45-01

Date: 1/22/2004

Photo Description: **Side #1 of Reader Card Assembly and Print Head w/Antenna Connected**



Company: Zebra Technologies

Product: R4M+

FCC ID#: I28RFID-Z45-01

Date: 1/22/2004

Photo Description: **Side #2 of Reader Card Assembly and Print Head w/Antenna Connected**



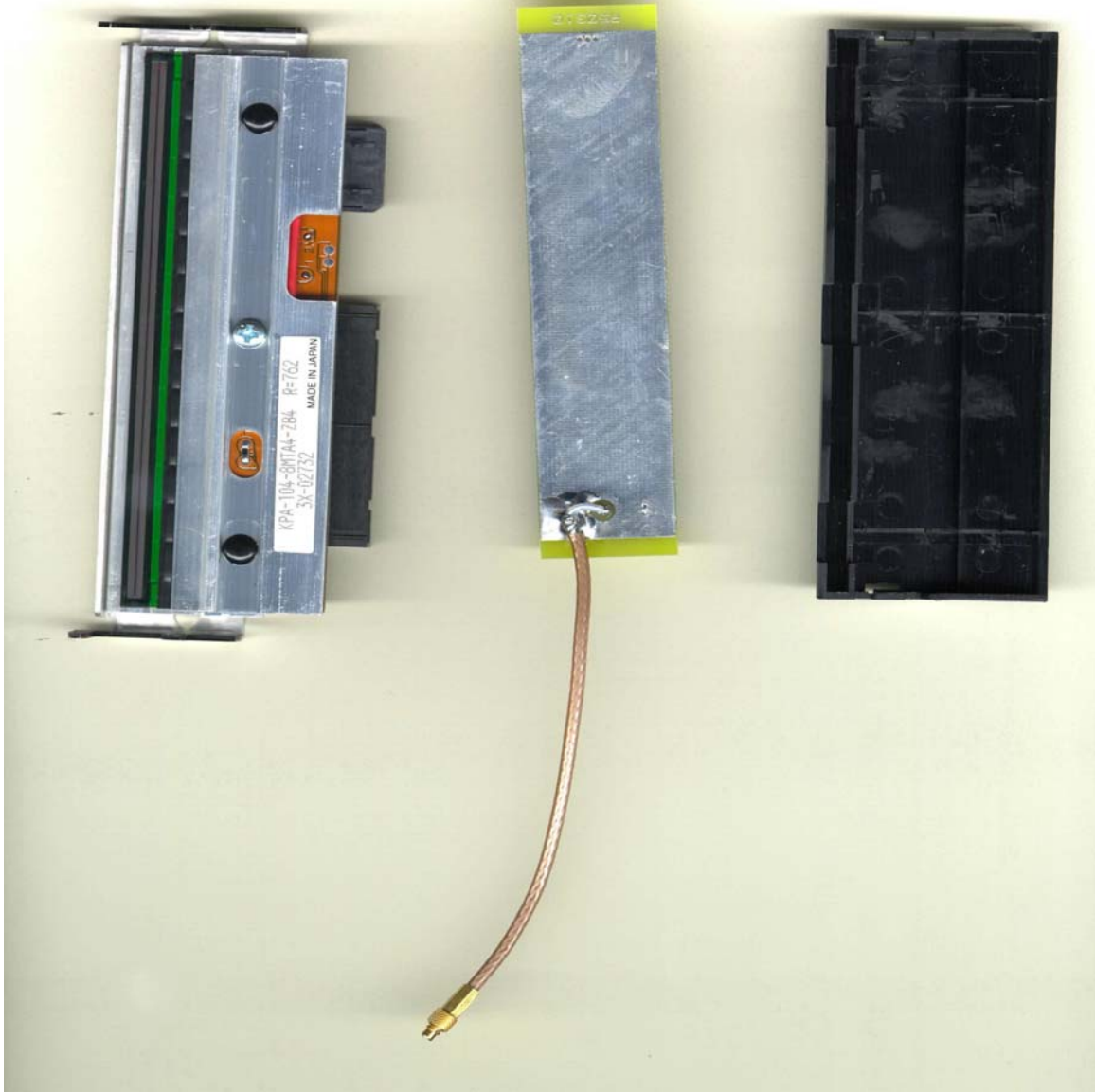
Company: Zebra Technologies

Product: R4M+

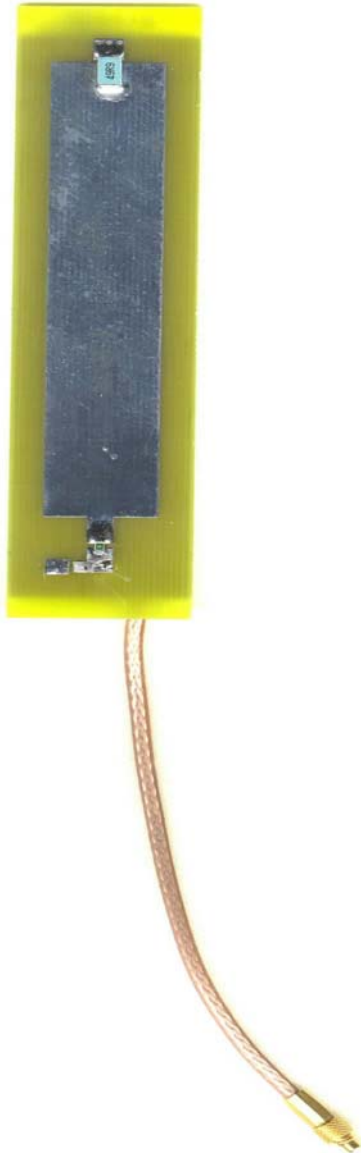
FCC ID#: I28RFID-Z45-01

Date: 1/22/2004

Photo Description: Antenna Cable Removed From Reader Card and Antenna Removed From Print Head



Company: Zebra Technologies
Product: R4M+
FCC ID#: I28RFID-Z45-01
Date: 1/22/2004
Photo Description: **Front Side of Antenna**



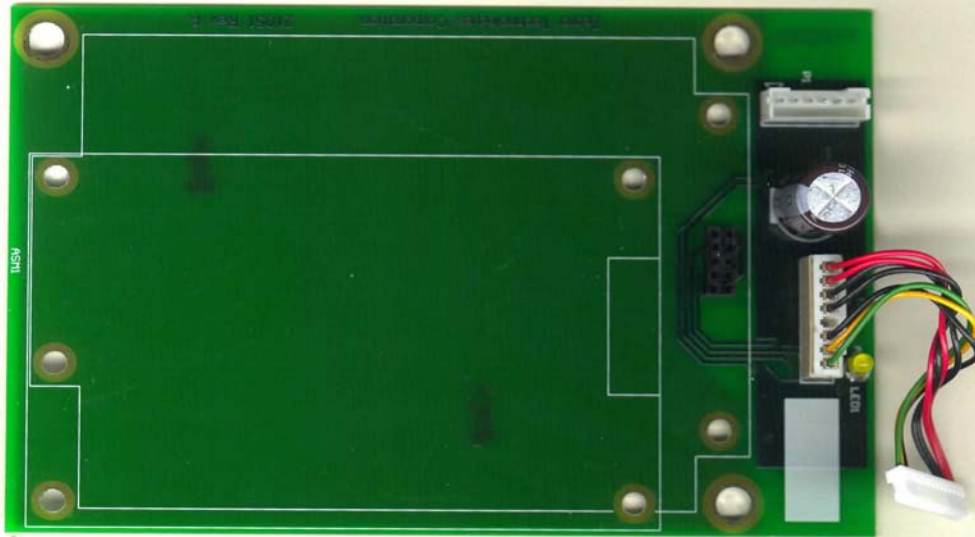
Company: Zebra Technologies

Product: R4M+

FCC ID#: I28RFID-Z45-01

Date: 1/22/2004

Photo Description: Reader Card Removed From Filter Board



Company: Zebra Technologies

Product: R4M+

FCC ID#: I28RFID-Z45-01

Date: 1/22/2004

Photo Description: Back of Reader Card



Company: Zebra Technologies

Product: R4M+

FCC ID#: I28RFID-Z45-01

Date: 1/22/2004

Photo Description: **Inside Covers of Reader Card**



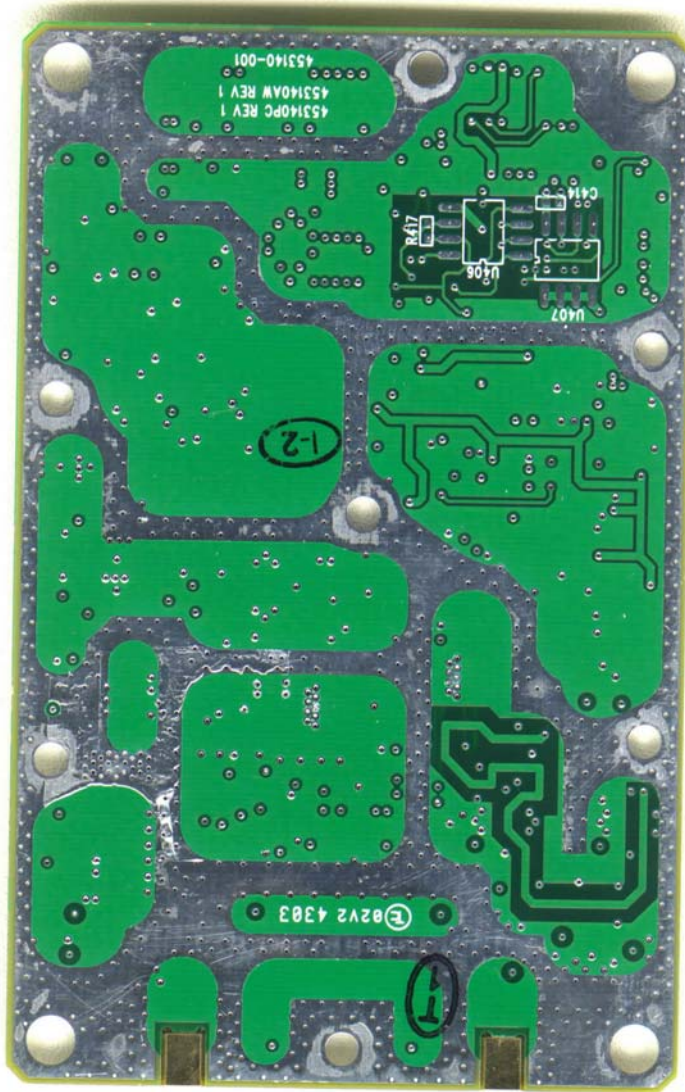
Company: Zebra Technologies

Product: R4M+

FCC ID#: I28RFID-Z45-01

Date: 1/22/2004

Photo Description: **Back Side of Reader Card Board**



Company: Zebra Technologies

Product: R4M+

FCC ID#: I28RFID-Z45-01

Date: 1/22/2004

Photo Description: Component Side of Reader Card Board

