

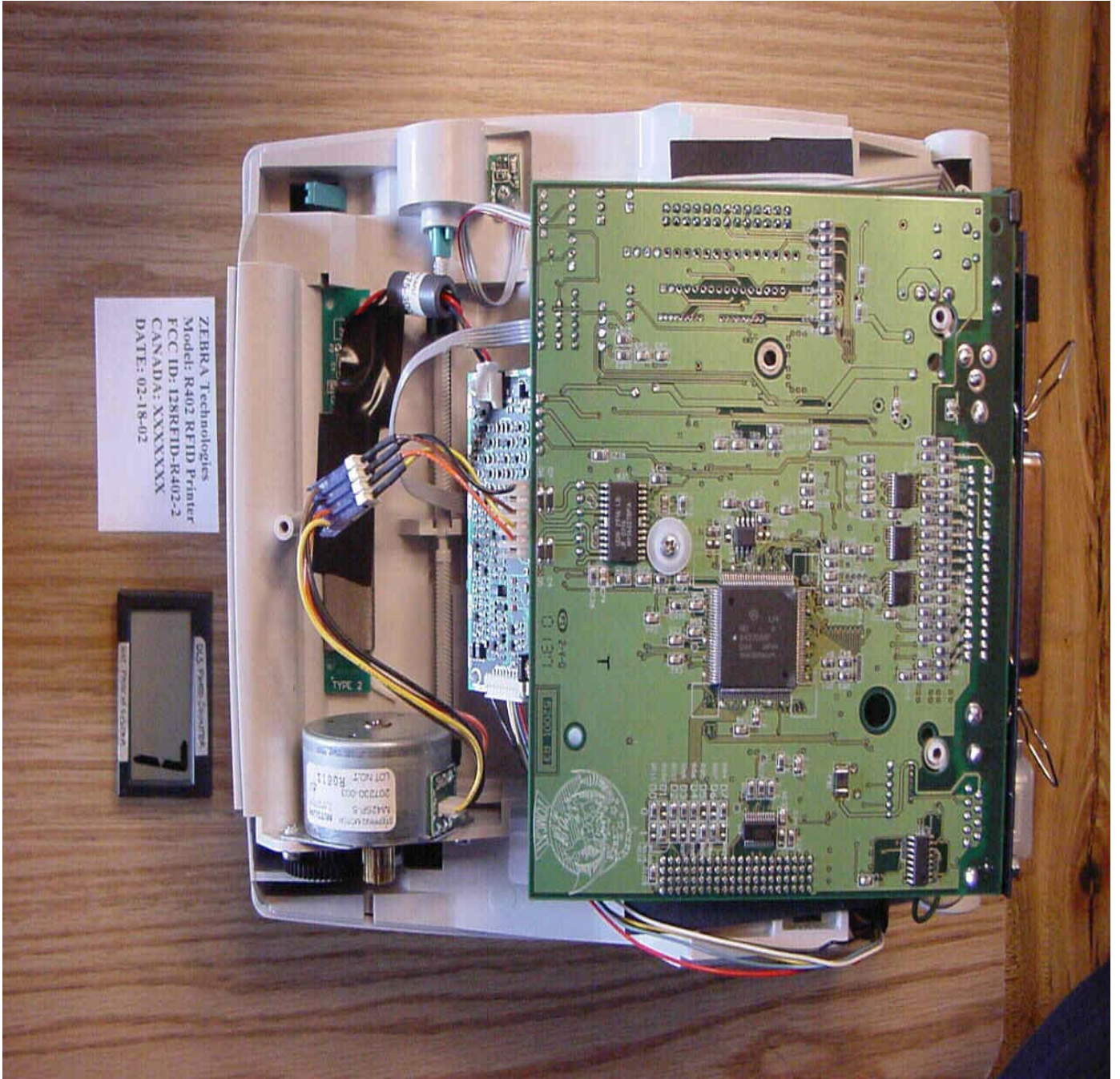
Top Open



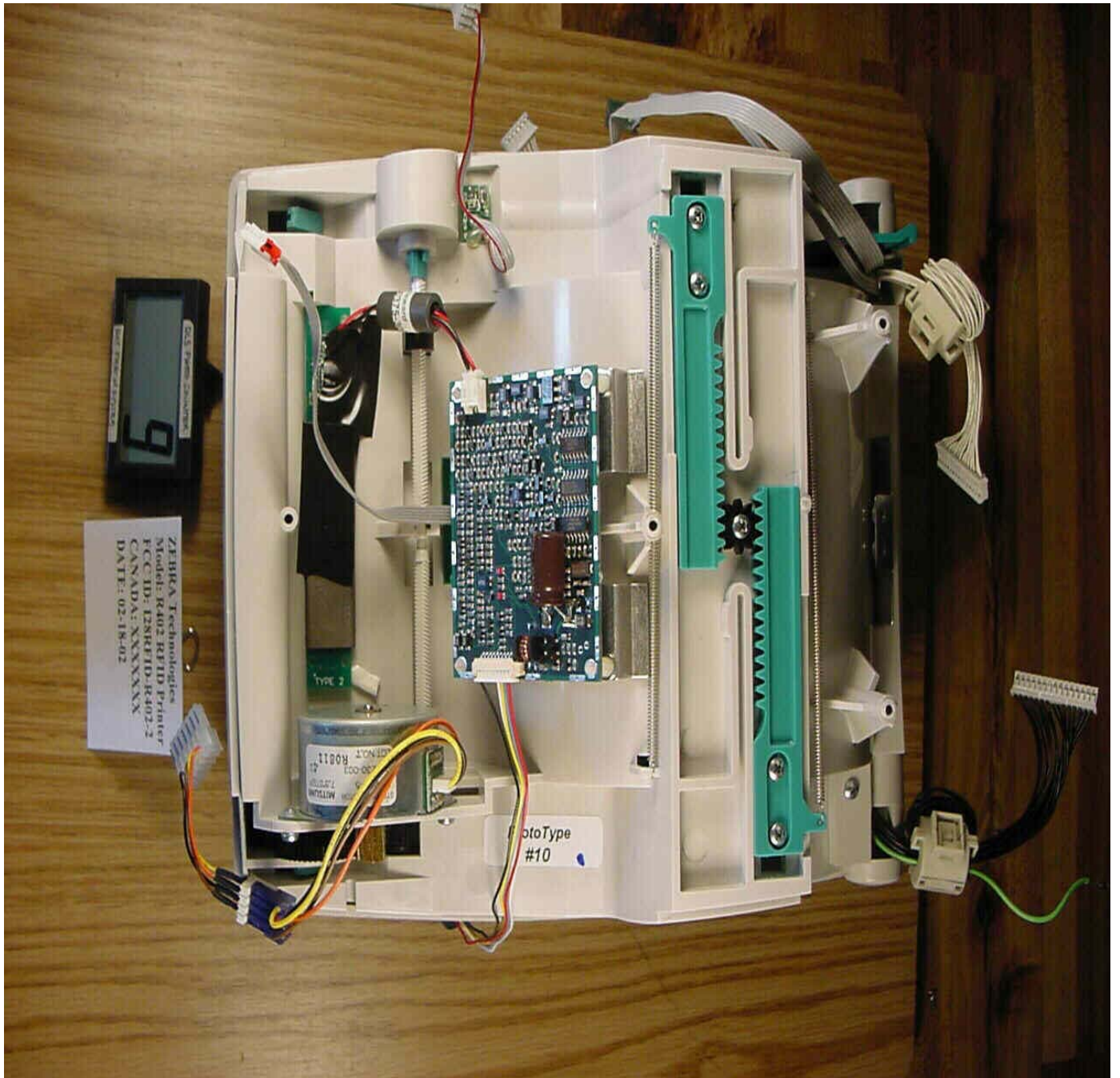
Bottom of Printer



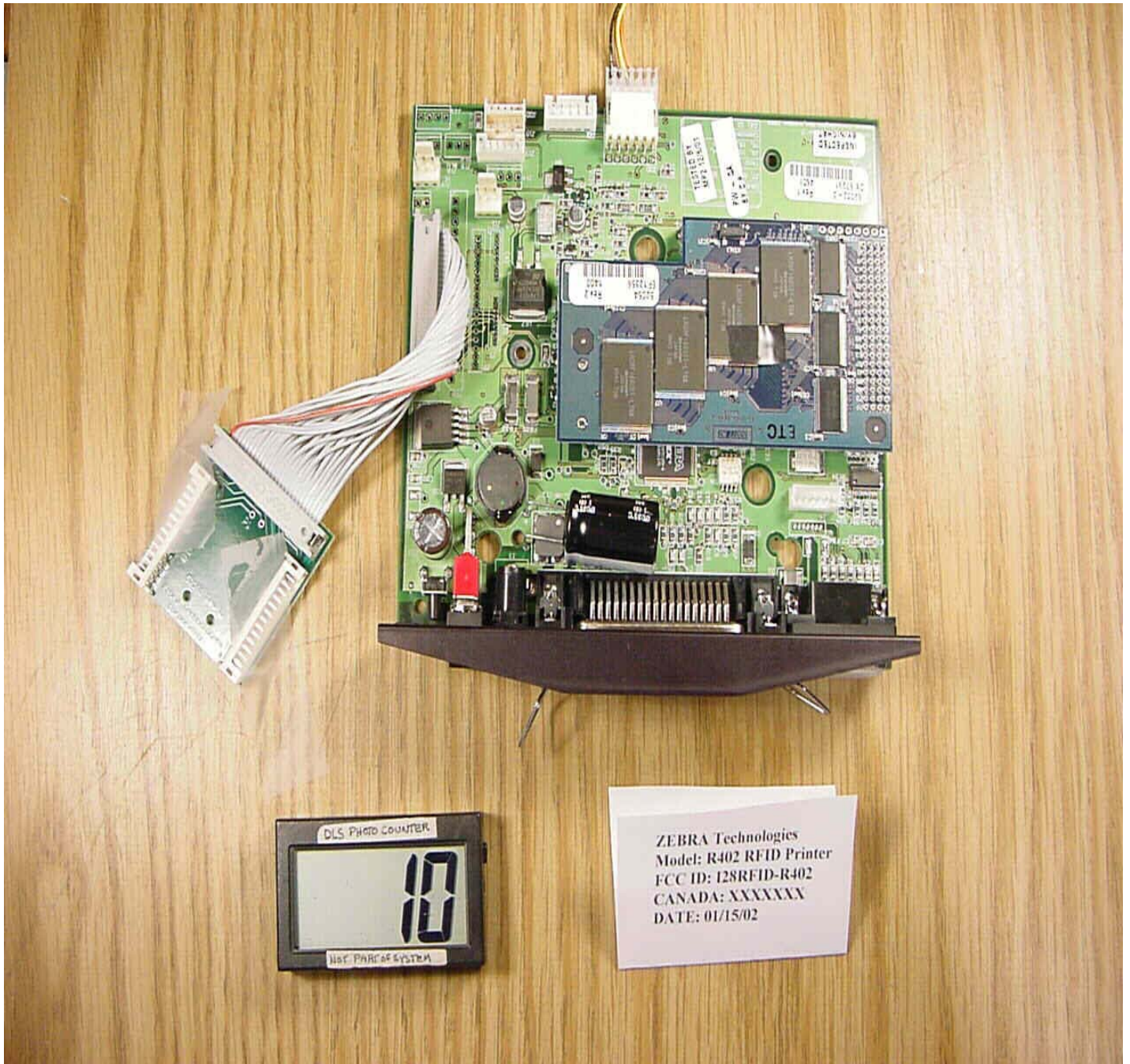
Inside Bottom Cover



Bottom Cover Removed



Inside Bottom Cover



Board # 52001R3, Board # 52054R2, & Board # 52301R1 Together

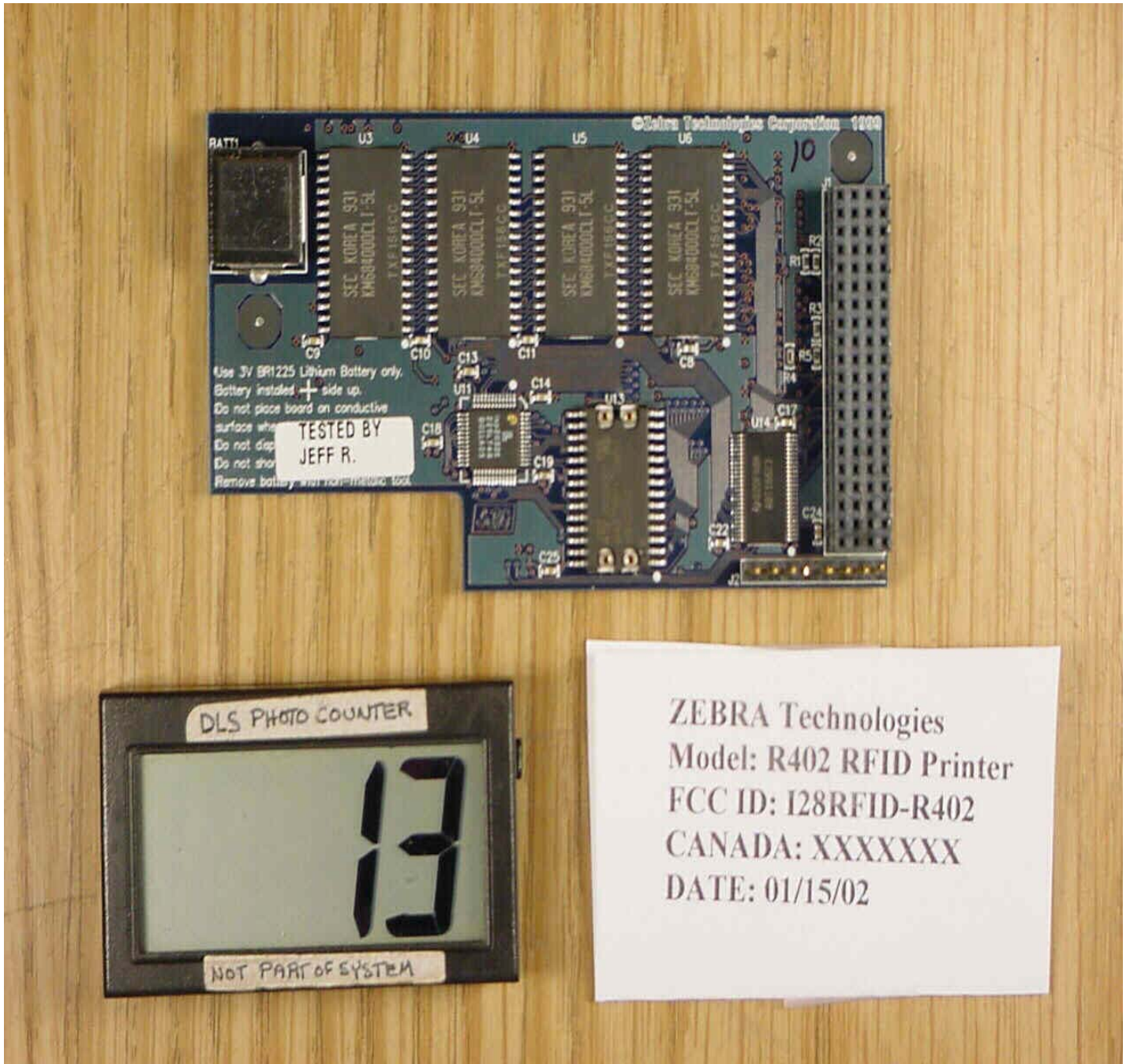


Top of Board # 52001R3 and Board # 52301R1

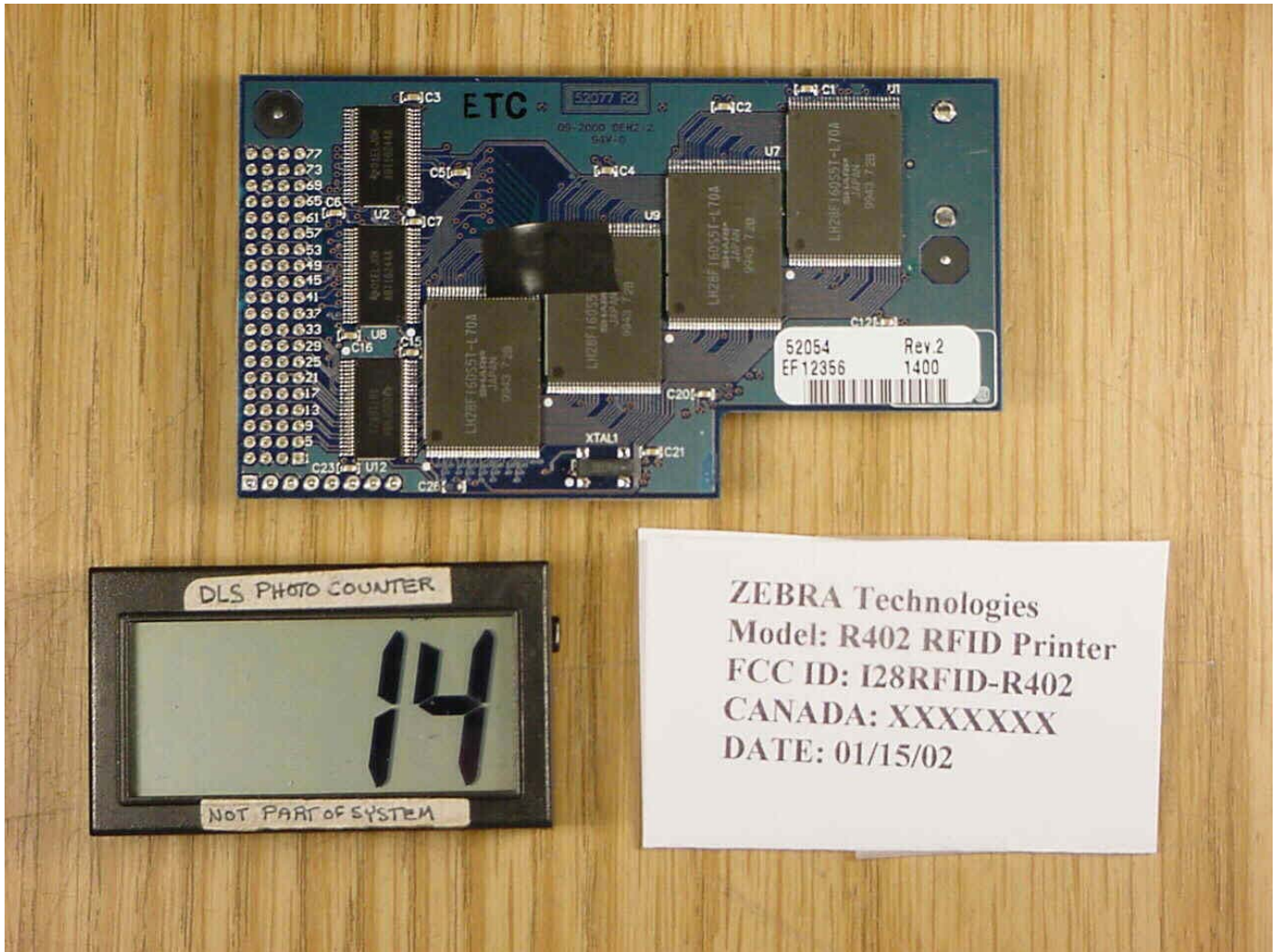


Bottom of Board # 52001R3 and Board # 52301R1

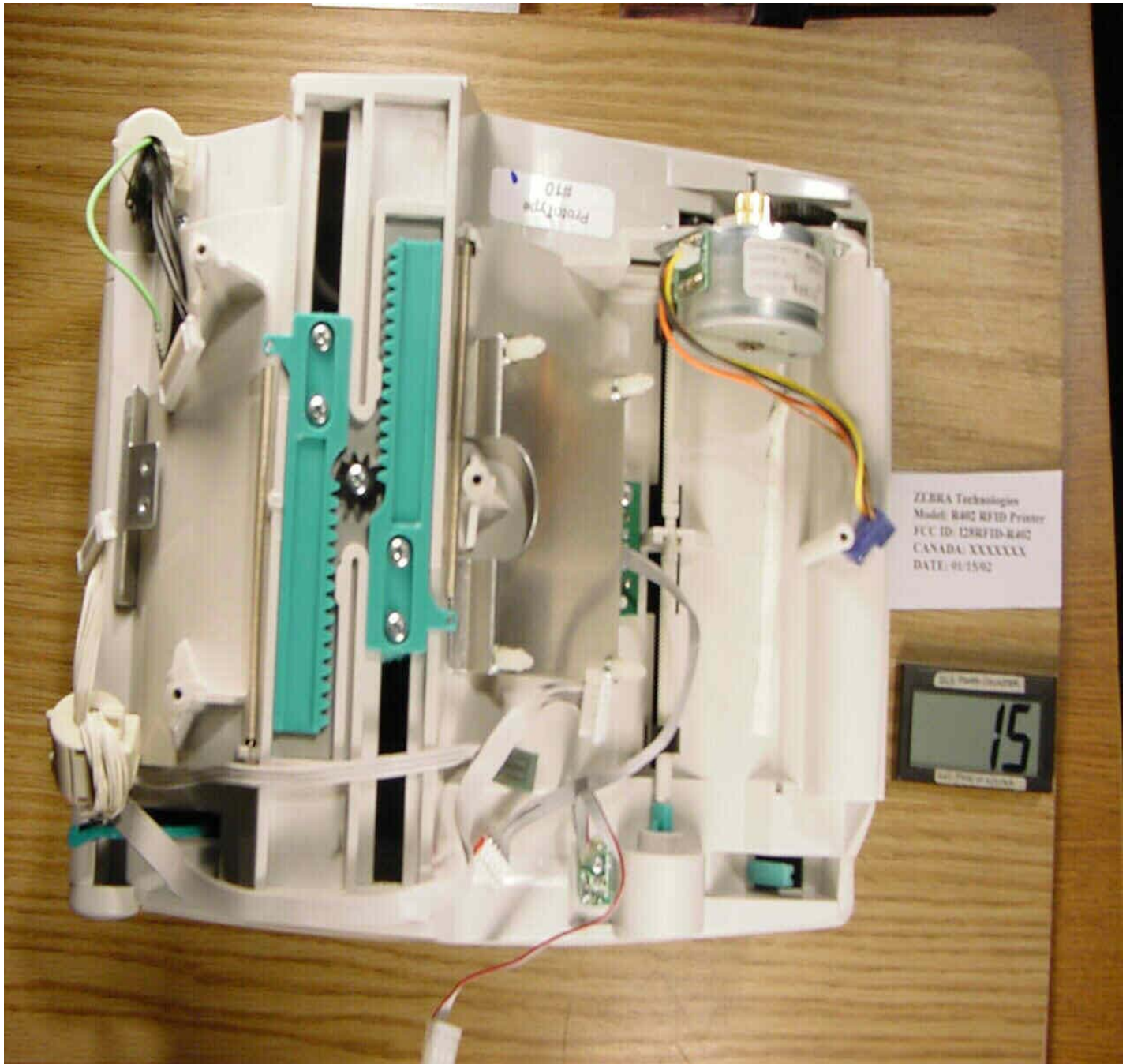




Top of Board # 52054R2

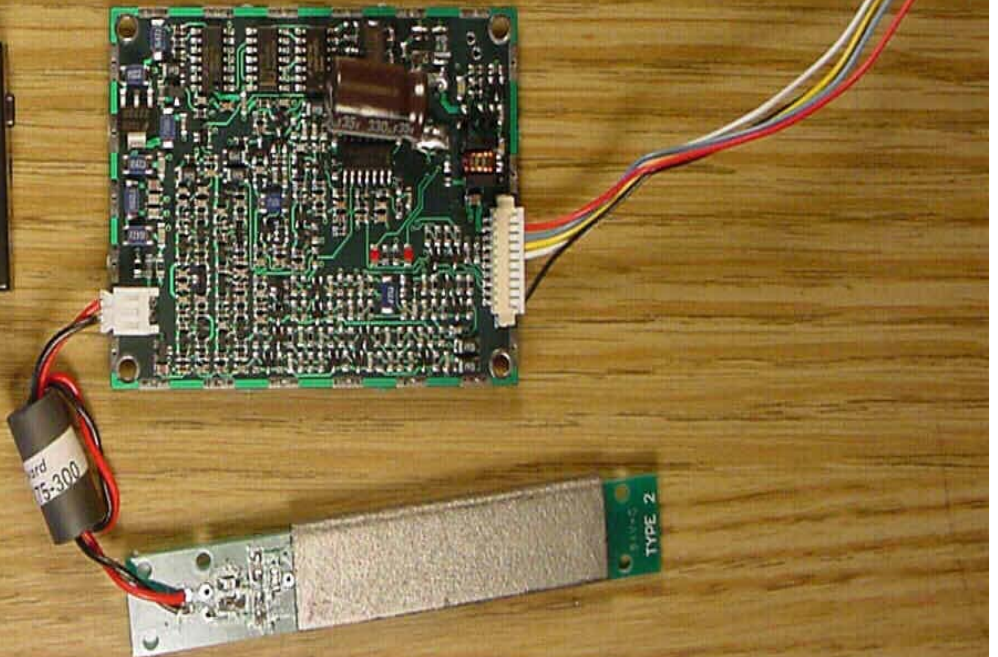


Bottom of Board # 52054R2



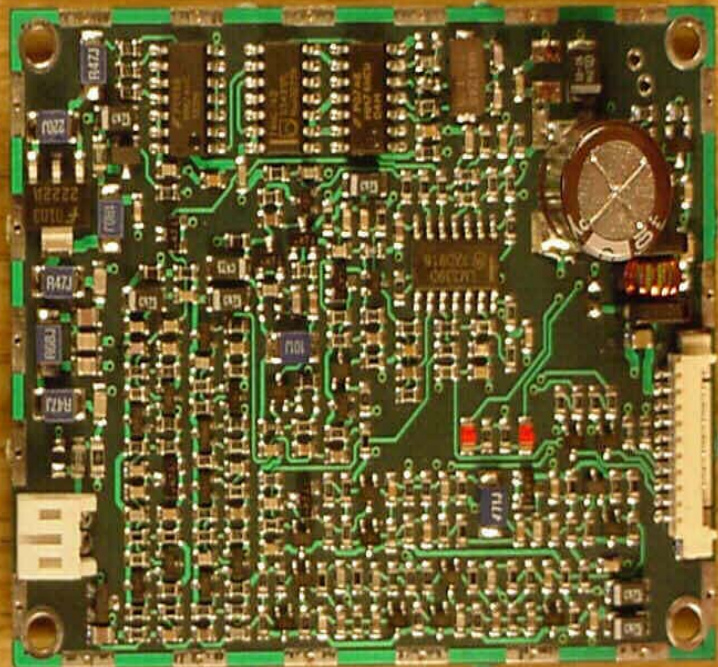
RFID Transmitter Board and Antenna Board #52336 Rev A removed from Printer

ZEBRA Technologies  
Model: R402 RFID Printer  
FCC ID: I28RFID-R402-2  
CANADA: XXXXXXX  
DATE: 02-18-02



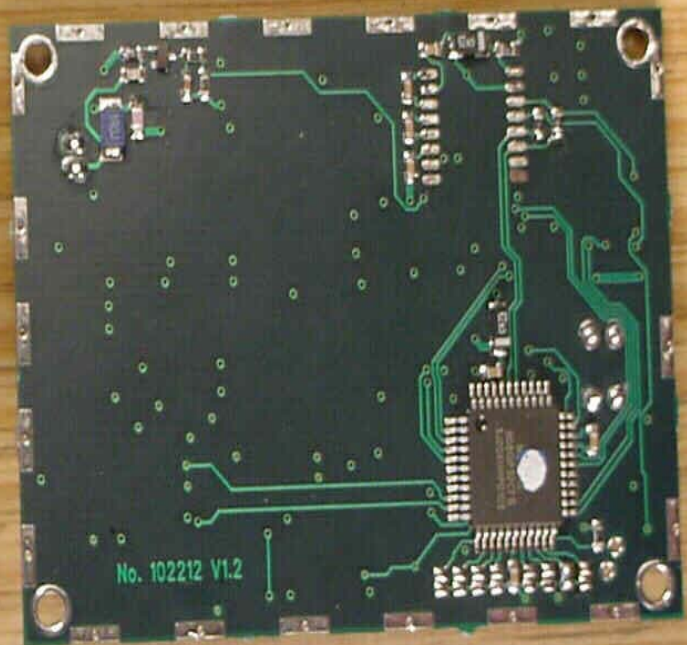
RFID Transmitter Board #102212 V1.2 and Antenna Board  
#52336 Rev A Together

ZEBRA Technologies  
Model: R402 RFID Printer  
FCC ID: I28RFID-R402-2  
CANADA: XXXXXXX  
DATE: 02-18-02

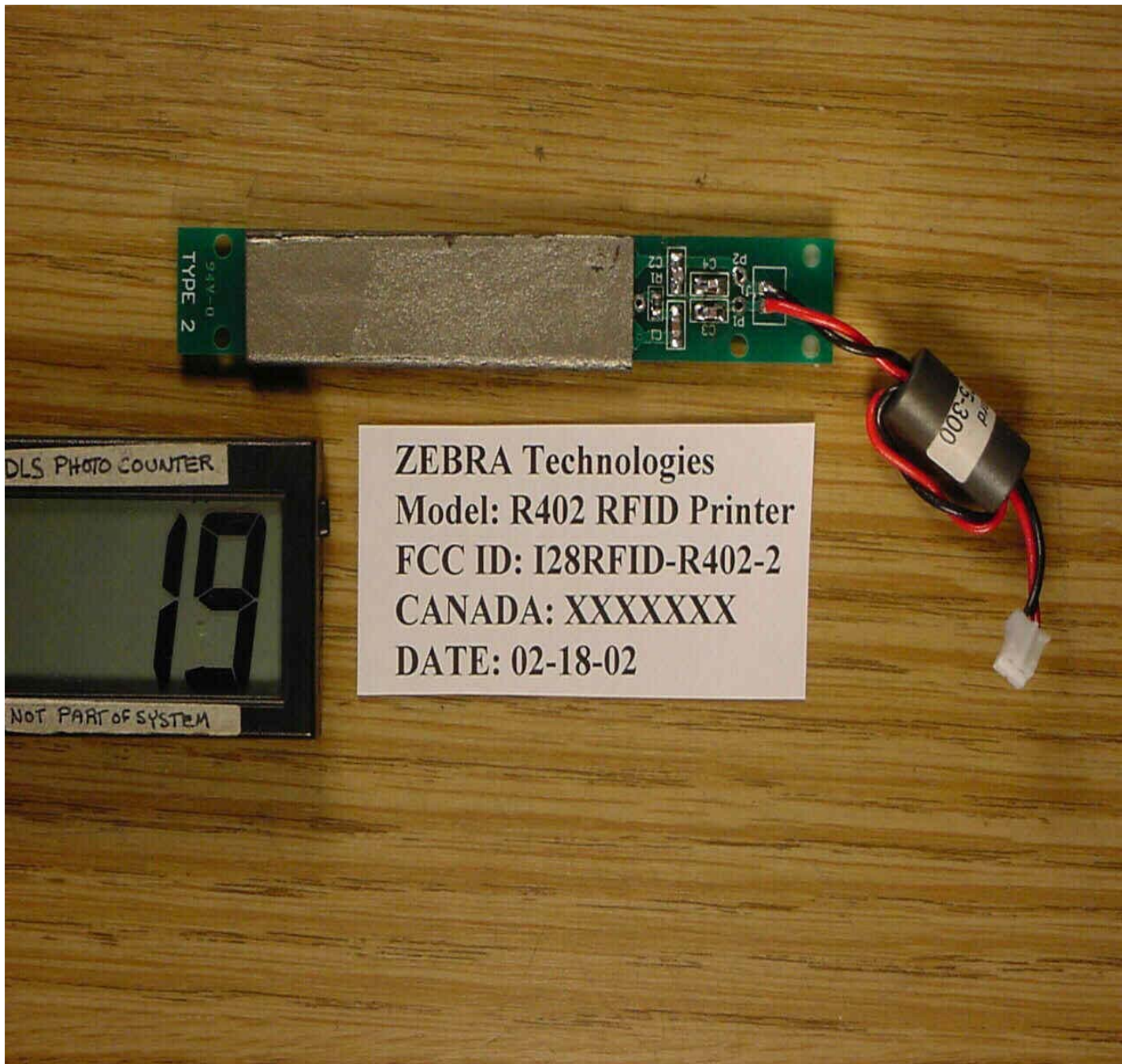


Top of RFID Transmitter Board #102212 V1.2

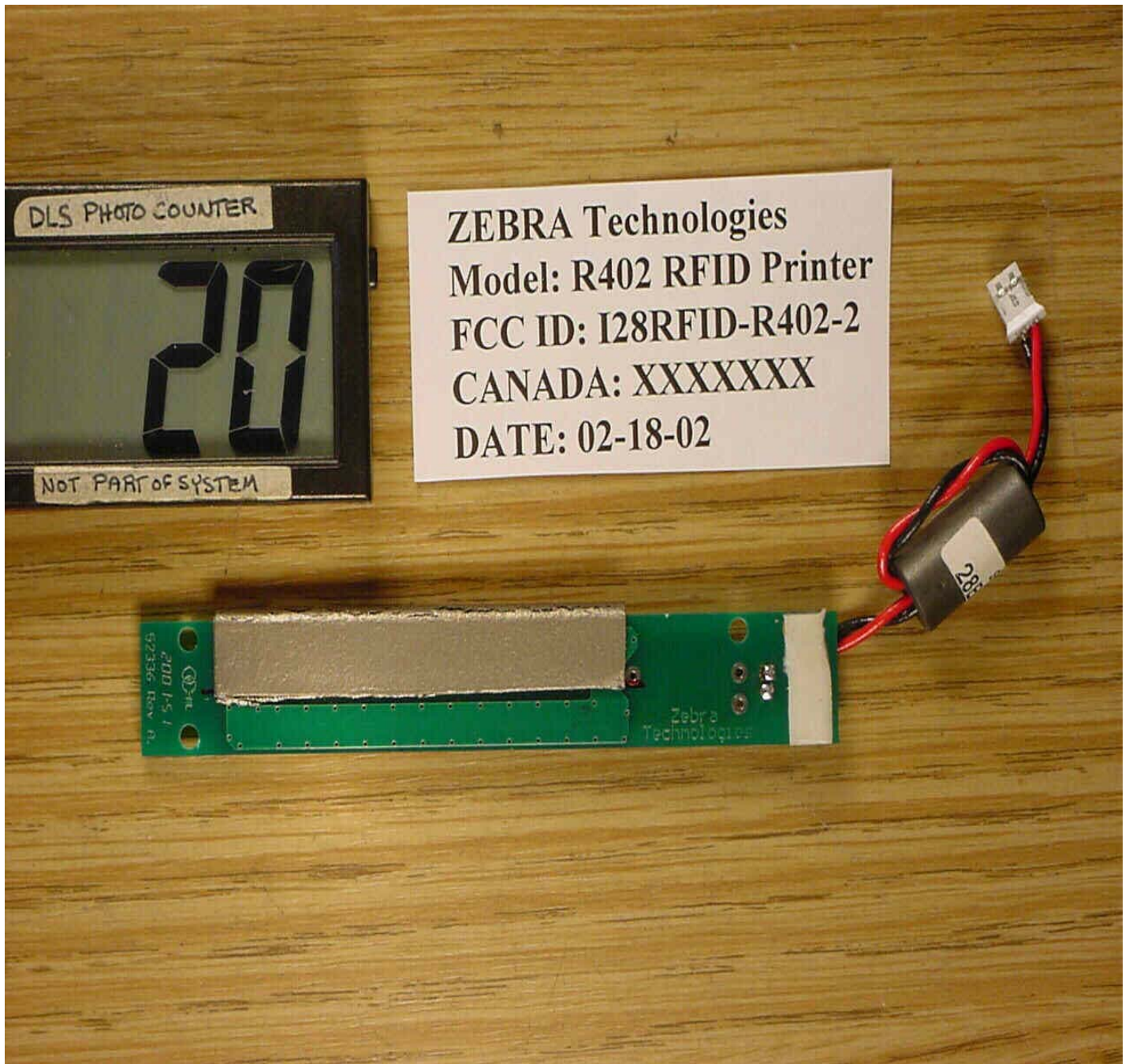
ZEBRA Technologies  
Model: R402 RFID Printer  
FCC ID: I28RFID-R402-2  
CANADA: XXXXXXX  
DATE: 02-18-02



Bottom of RFID Transmitter Board #102212 V1.2



Antenna Board #52336 Rev A (Antenna Side)



Antenna Board #52336 Rev A (Non-Antenna Side)