

Company: Zebra Technologies Corporation
Product: R110XiIII Plus
FCC ID#: I28RFID-R110XI-03
Date: 11/19/2004
Photo Description: Reader installed in printer



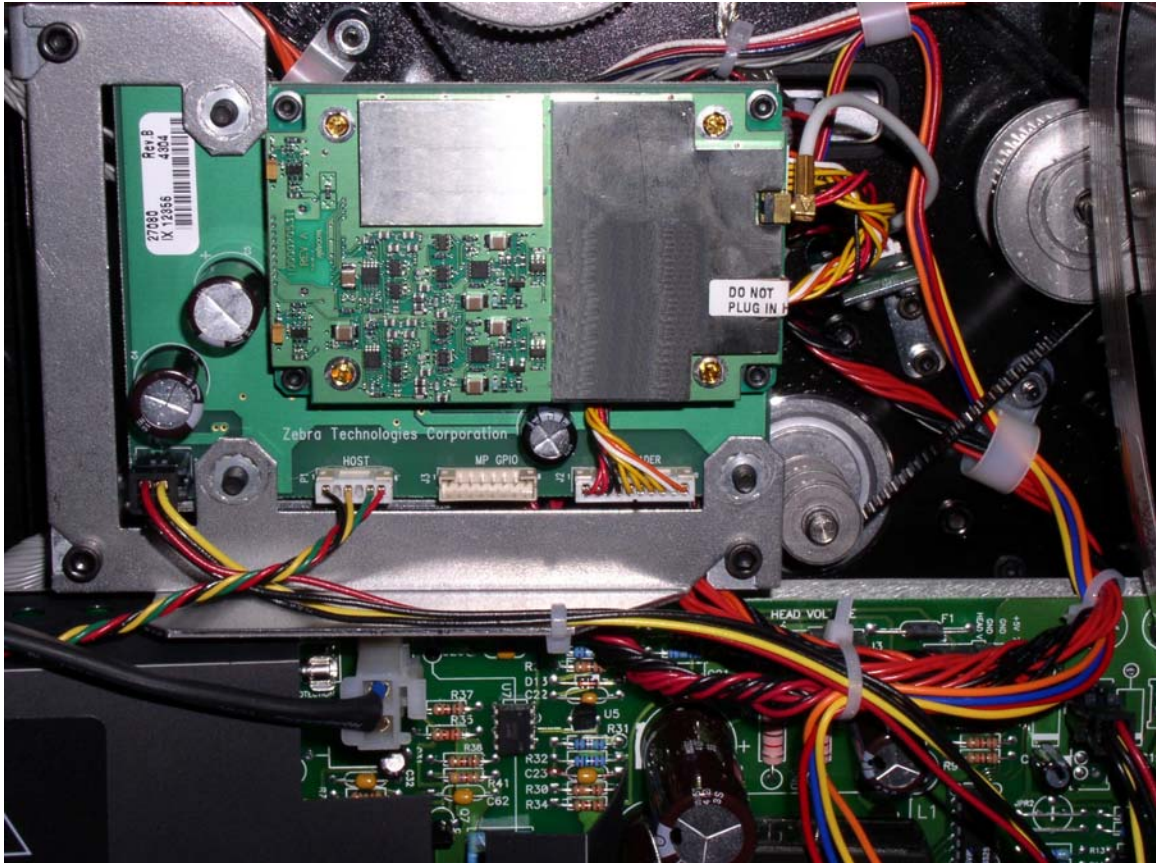
Company: Zebra Technologies Corporation

Product: R110XiIII Plus

FCC ID#: I28RFID-R110XI-03

Date: 11/19/2004

Photo Description: Reader assembly installed in printer



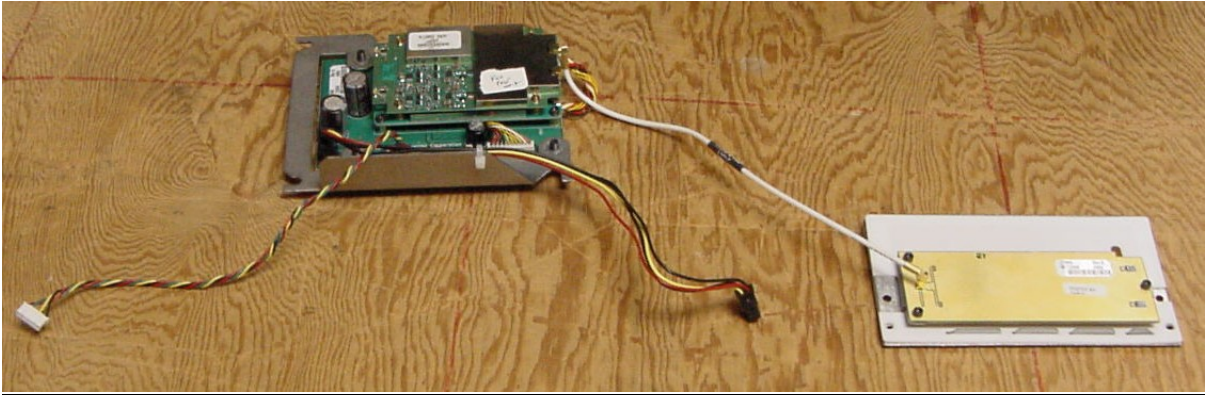
Company: Zebra Technologies Corporation

Product: R110XiIII Plus

FCC ID#: I28RFID-R110XI-03

Date: 11/19/2004

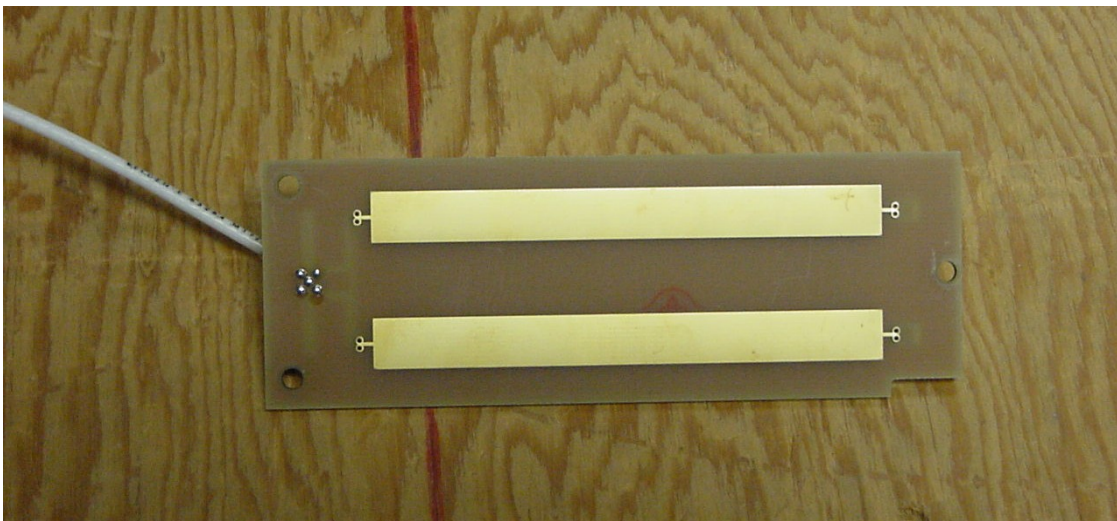
Photo Description: **Reader assembly with Coupler\Antenna & cables**



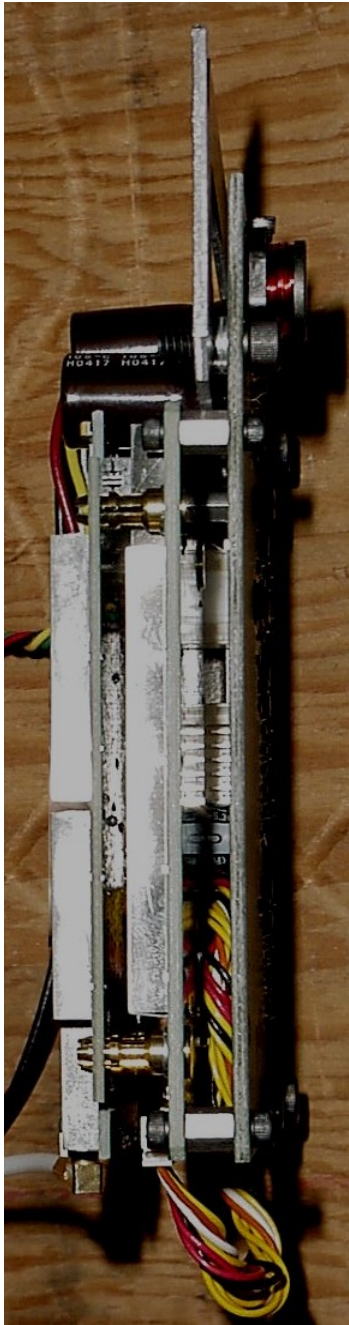
Company: Zebra Technologies Corporation
Product: R110XiIII Plus
FCC ID#: I28RFID-R110XI-03
Date: 11/19/2004
Photo Description: Coupler\Antenna bracket assembly



Company: Zebra Technologies Corporation
Product: R110XiIII Plus
FCC ID#: I28RFID-R110XI-03
Date: 11/19/2004
Photo Description: Coupler\Antenna



Company: Zebra Technologies Corporation
Product: R110XiIII Plus
FCC ID#: I28RFID-R110XI-03
Date: 11/19/2004
Photo Description: Reader Assembly – side view



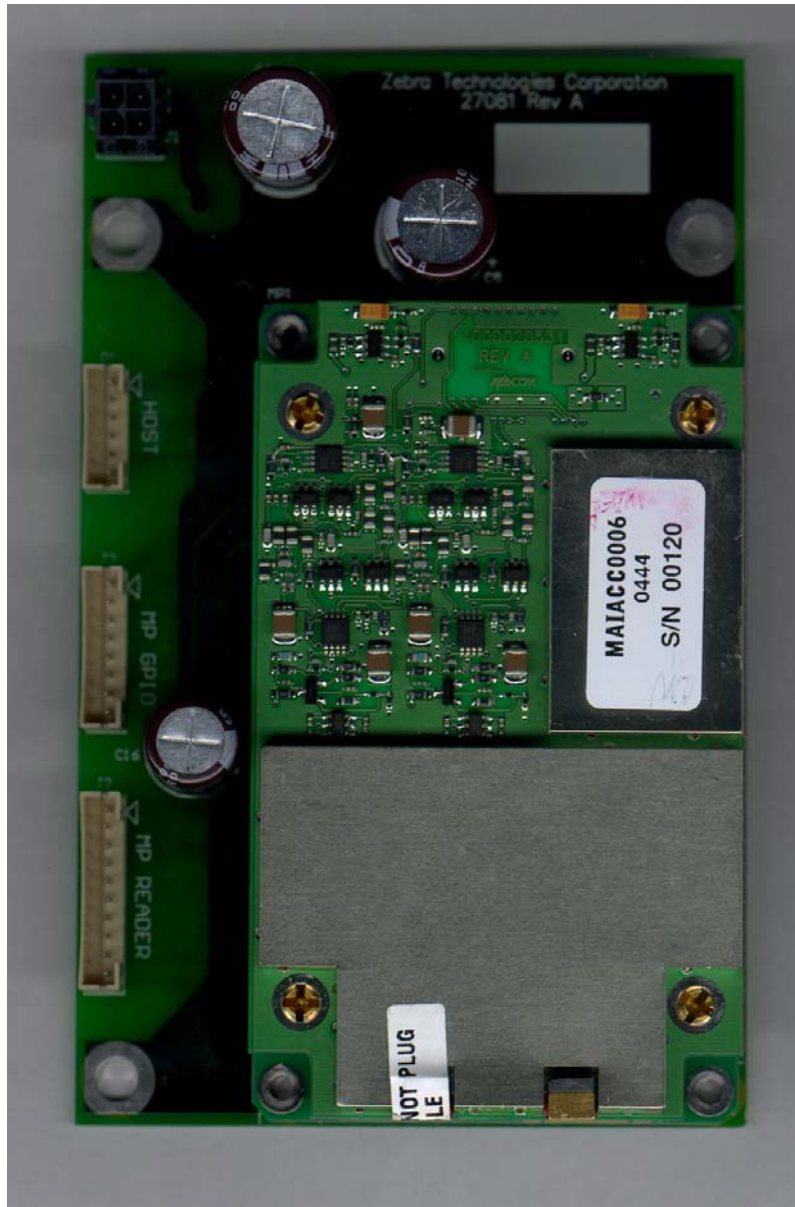
Company: Zebra Technologies Corporation

Product: R110XiIII Plus

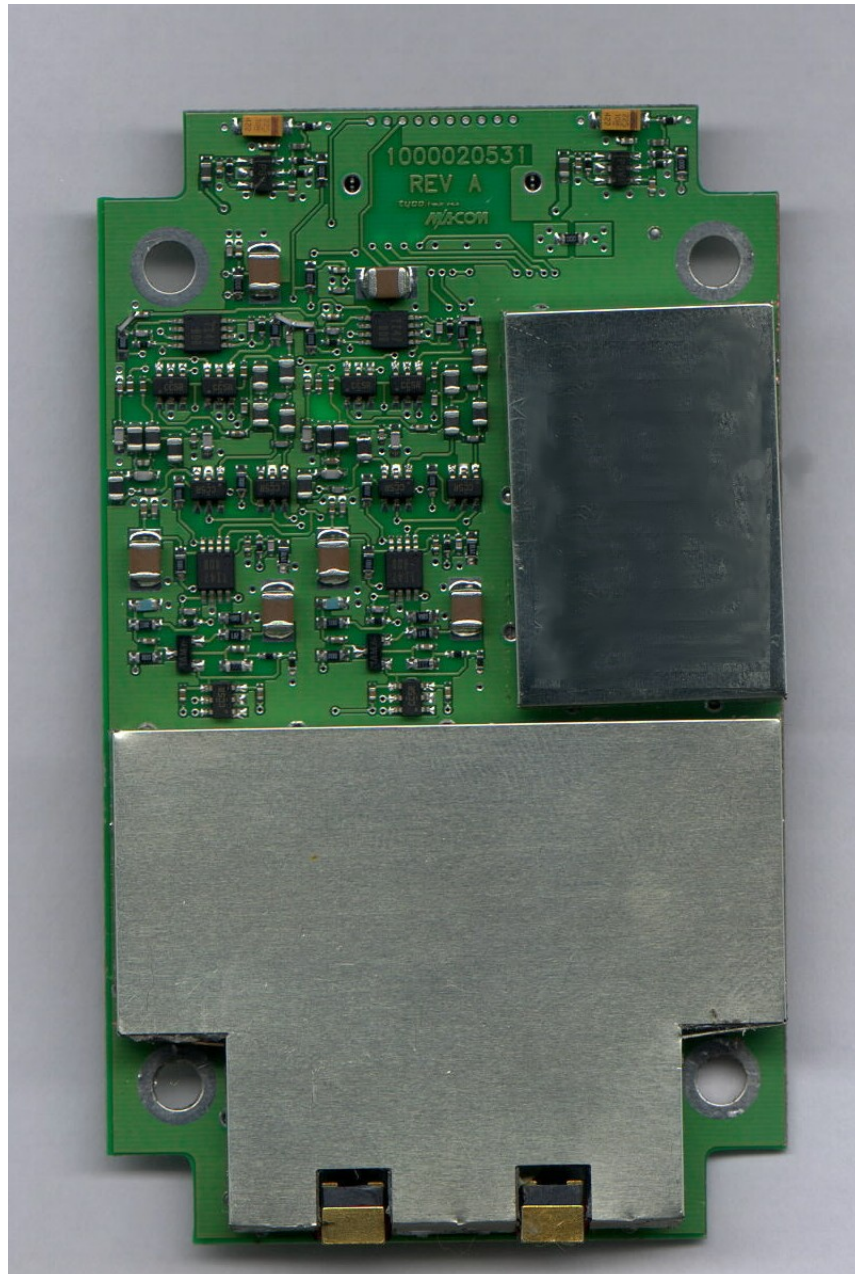
FCC ID#: I28RFID-R110XI-03

Date: 11/19/2004

Photo Description: RF, Digital, Power board assembly – top view



Company: Zebra Technologies Corporation
Product: R110XiIII Plus
FCC ID#: I28RFID-R110XI-03
Date: 11/19/2004
Photo Description: RF board – top side with shield can



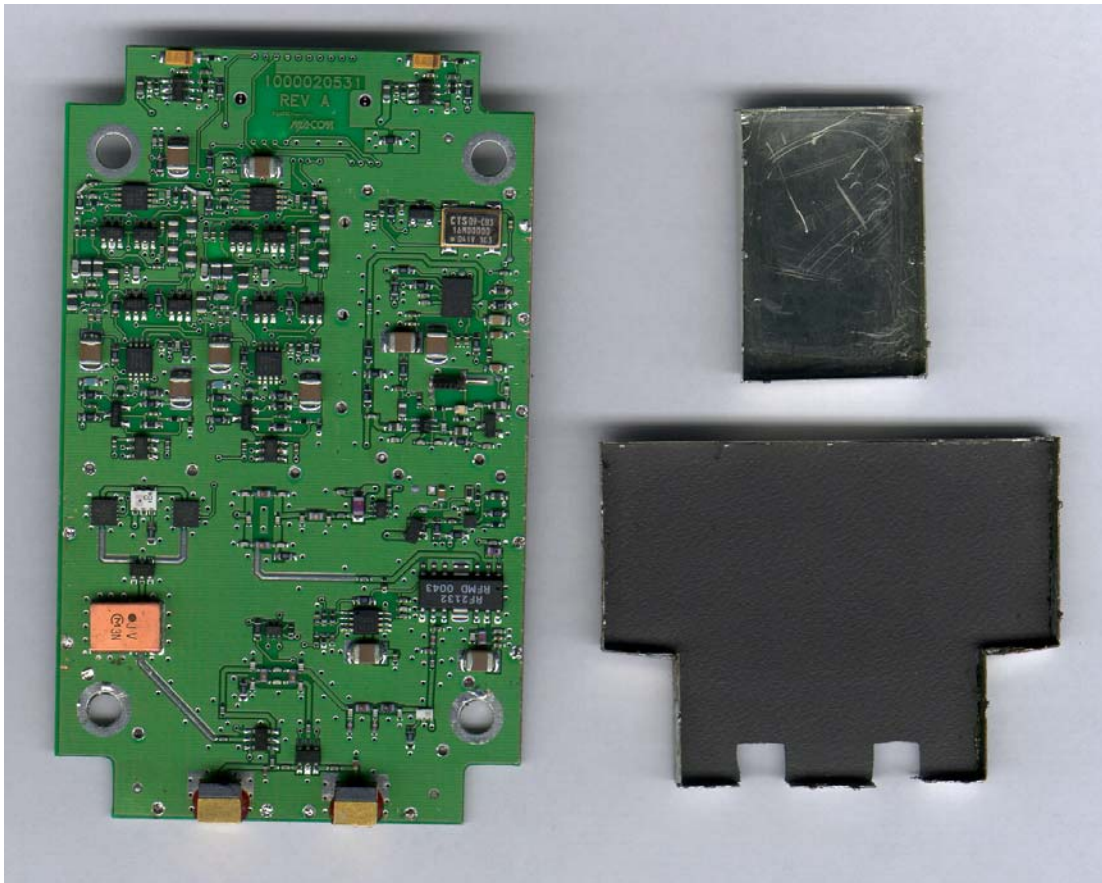
Company: Zebra Technologies Corporation

Product: R110XiIII Plus

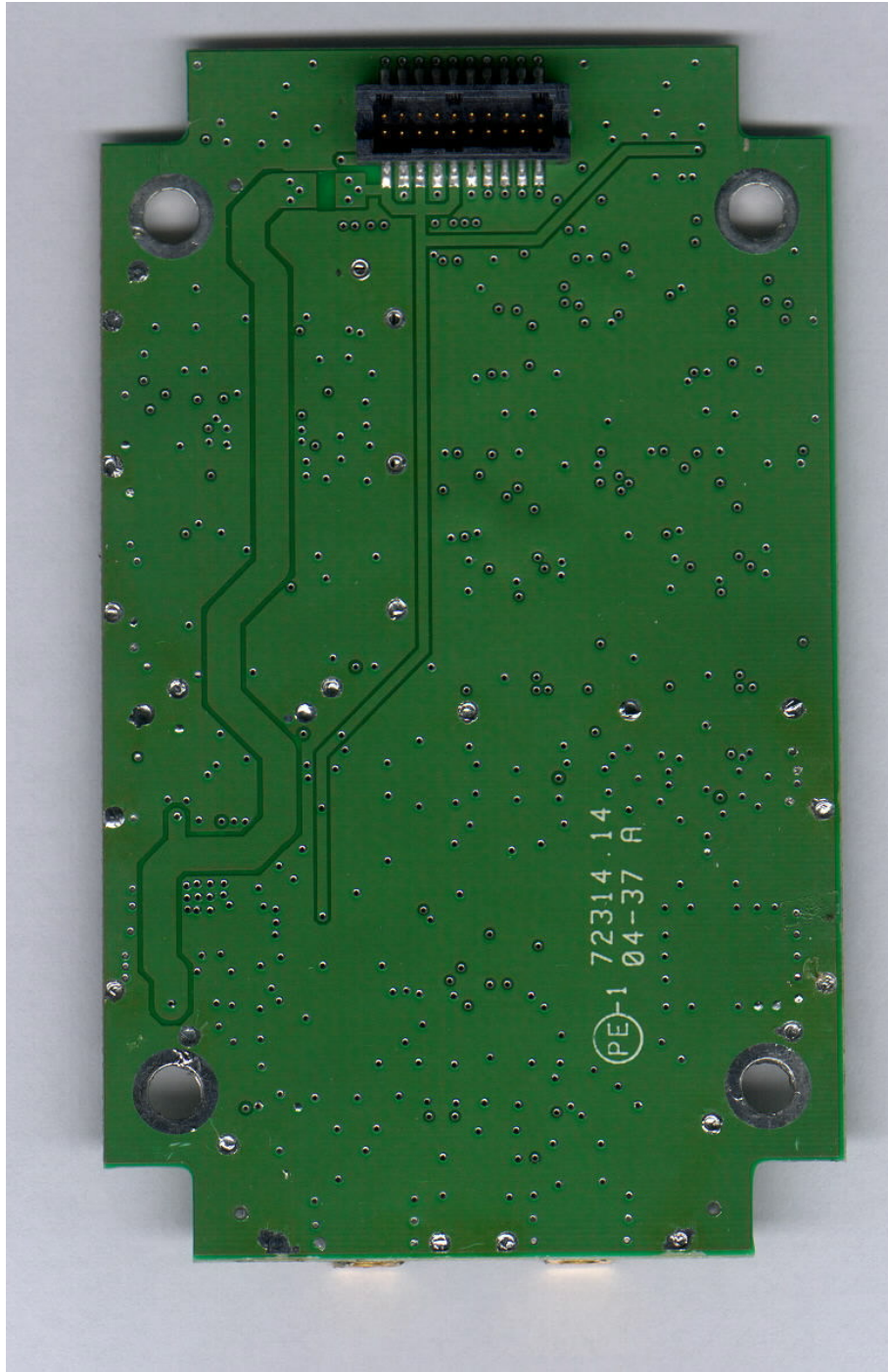
FCC ID#: I28RFID-R110XI-03

Date: 11/19/2004

Photo Description: Top side RF board; Inside of shield cans



Company: Zebra Technologies Corporation
Product: R110XiIII Plus
FCC ID#: I28RFID-R110XI-03
Date: 11/19/2004
Photo Description: Bottom side RF board



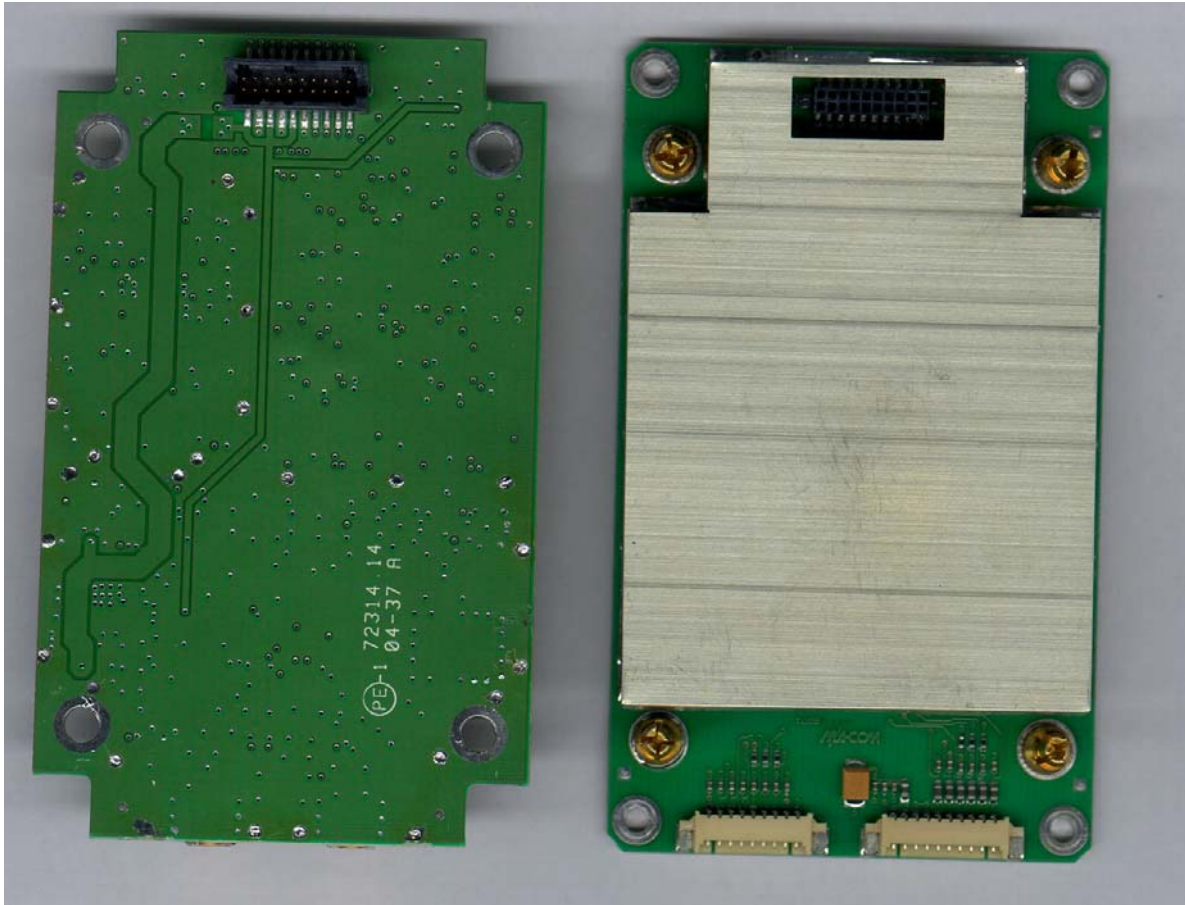
Company: Zebra Technologies Corporation

Product: R110XiIII Plus

FCC ID#: I28RFID-R110XI-03

Date: 11/19/2004

Photo Description: **RF & Digital boards, disassembled**



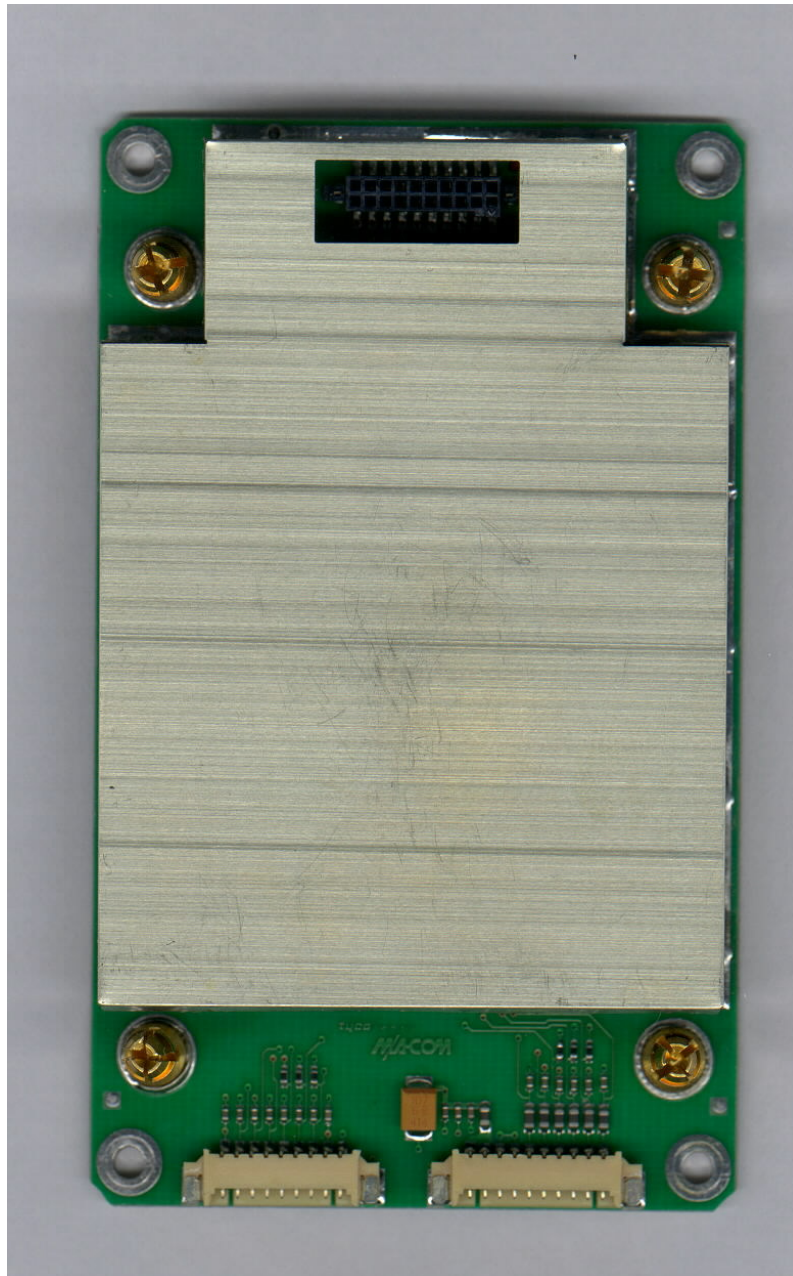
Company: Zebra Technologies Corporation

Product: R110XiIII Plus

FCC ID#: I28RFID-R110XI-03

Date: 11/19/2004

Photo Description: **Digital board – top side with shield can**



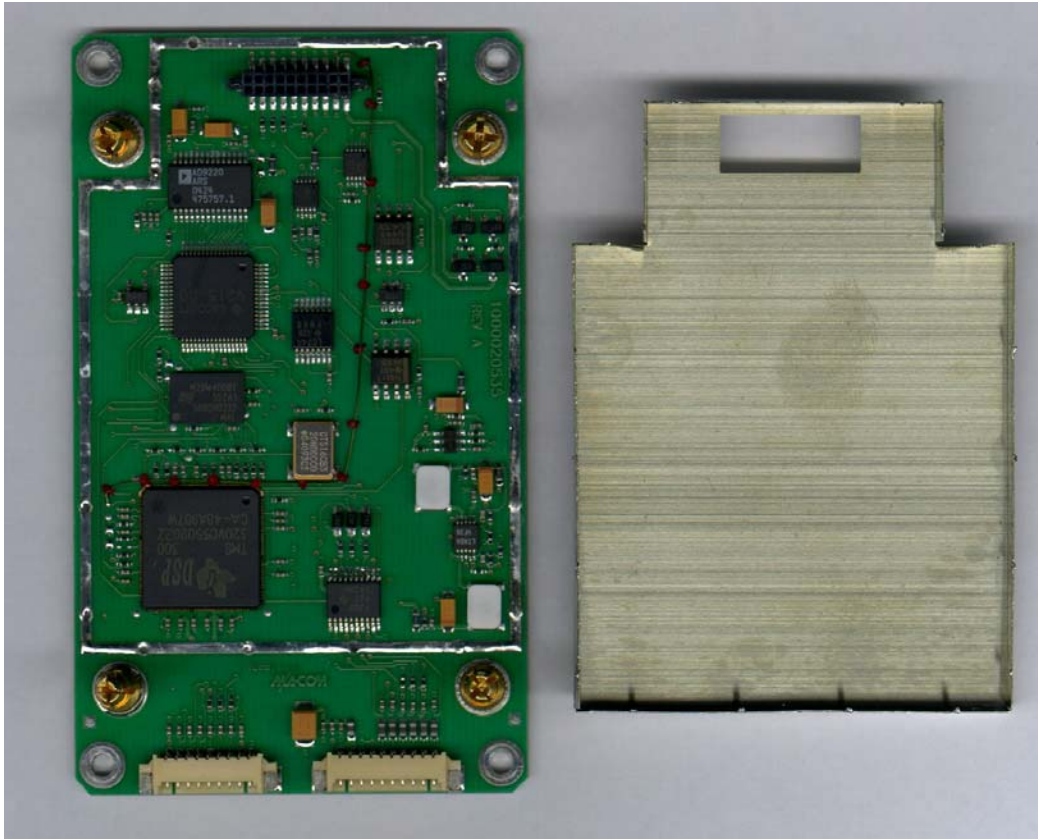
Company: Zebra Technologies Corporation

Product: R110XiIII Plus

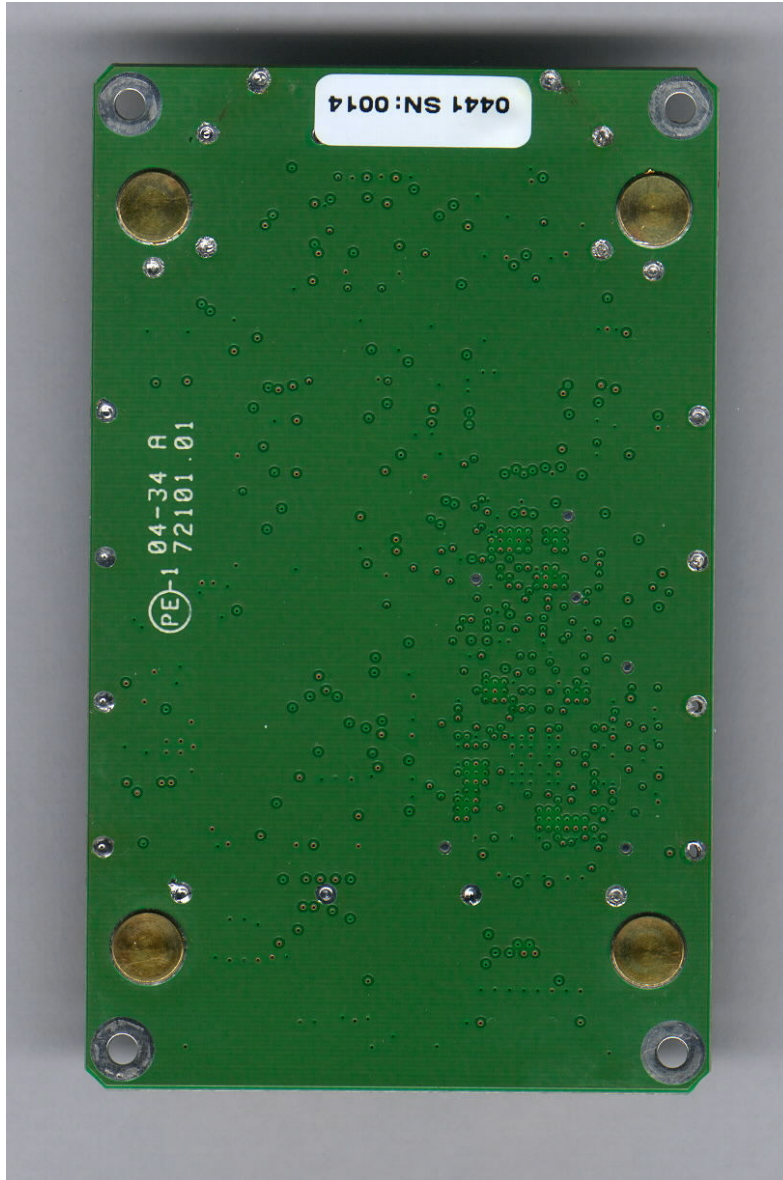
FCC ID#: I28RFID-R110XI-03

Date: 11/19/2004

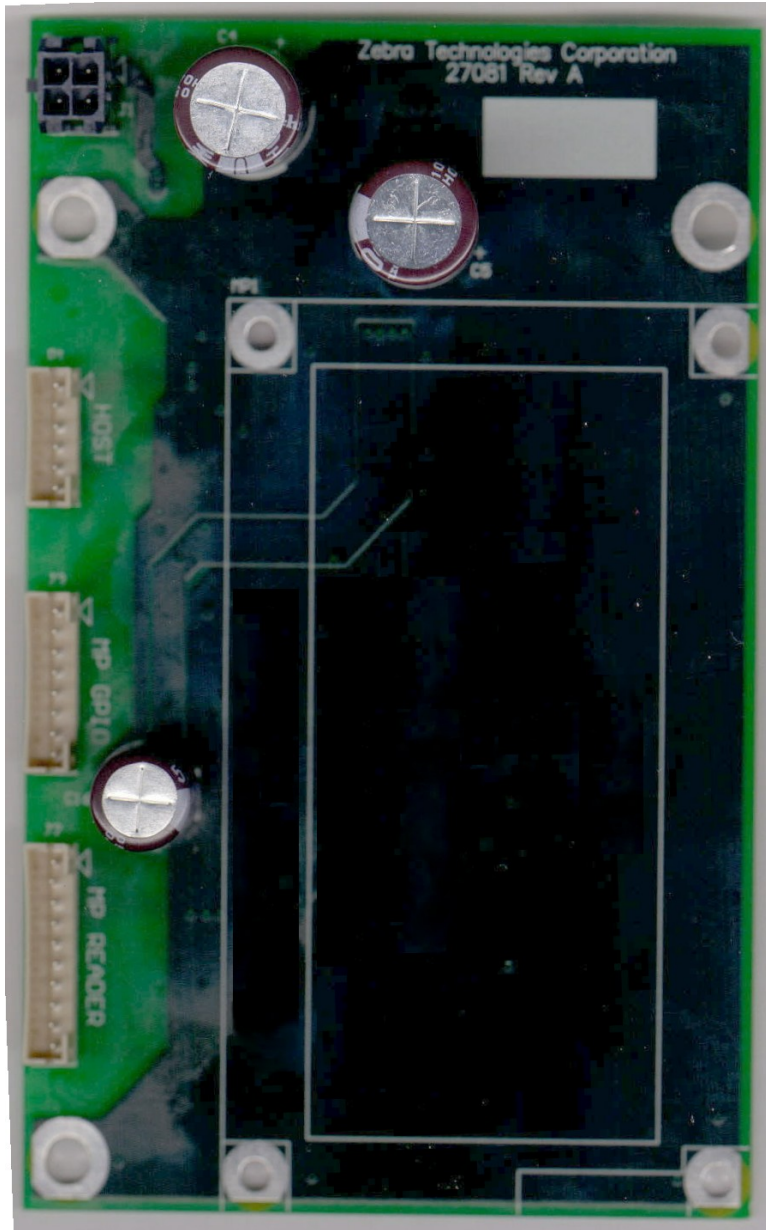
Photo Description: Digital board – top side; Shield can - inside



Company: Zebra Technologies Corporation
Product: R110XiIII Plus
FCC ID#: I28RFID-R110XI-03
Date: 11/19/2004
Photo Description: Digital board – bottom side



Company: Zebra Technologies Corporation
Product: R110XiIII Plus
FCC ID#: I28RFID-R110XI-03
Date: 11/19/2004
Photo Description: Power adaptor board – top side



Company: Zebra Technologies Corporation
Product: R110XiIII Plus
FCC ID#: I28RFID-R110XI-03
Date: 11/19/2004
Photo Description: Power adaptor board – bottom side

