

Company: Zebra Technologies

Product: R110XiIII Plus

FCC ID#: I28RFID-R110XI-01

Date: 6/10/2004

Photo Description: **Right Side of EuT Door Open**



Company: Zebra Technologies

Product: R110XiIII Plus

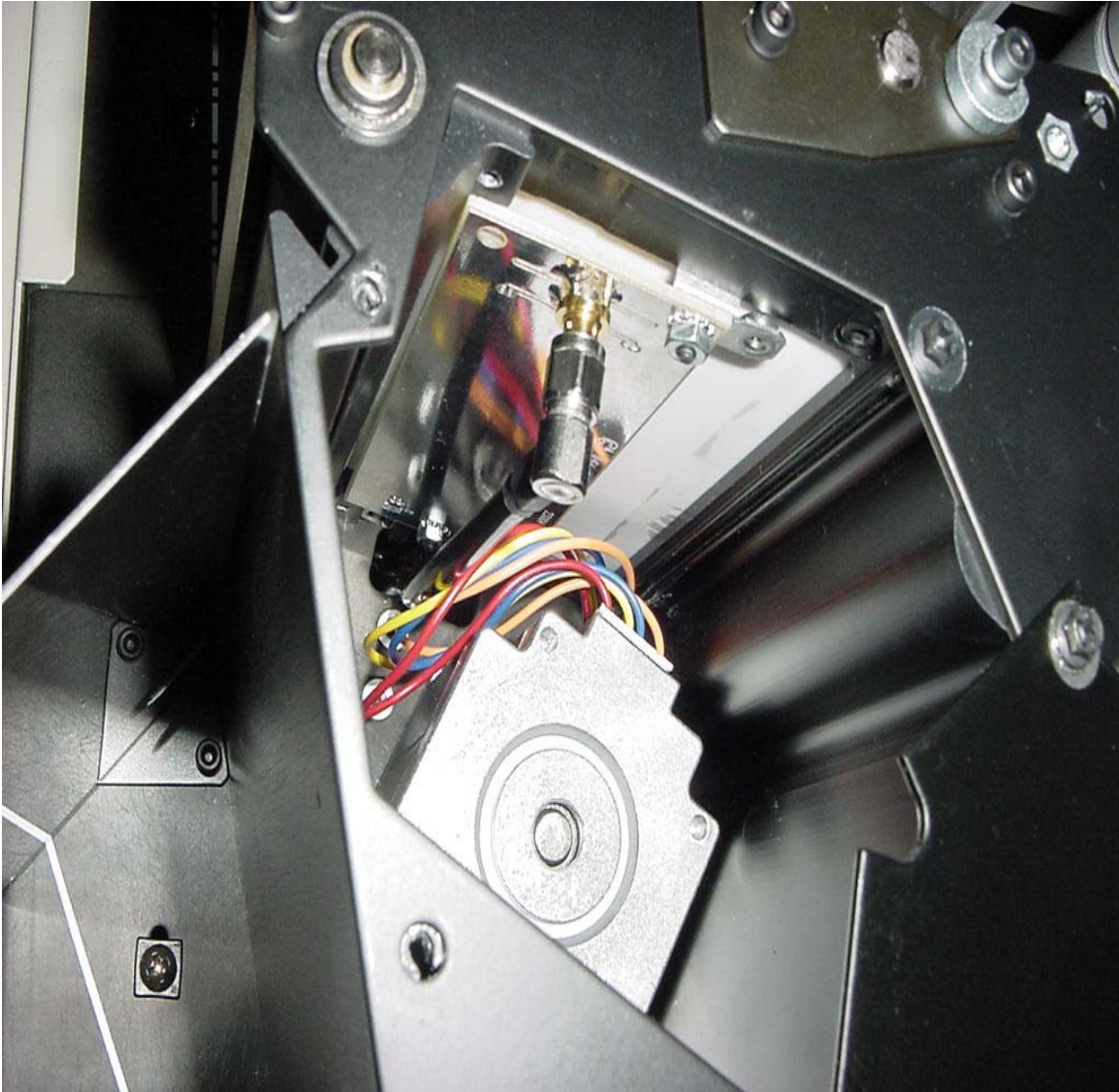
FCC ID#: I28RFID-R110XI-01

Date: 6/10/2004

Photo Description: **Front Side of EuT Door Open with Antenna Placement**



Company: Zebra Technologies
Product: R110XiIII Plus
FCC ID#: I28RFID-R110XI-01
Date: 6/10/2004
Photo Description: Transmit Antenna Placement



Company: Zebra Technologies

Product: R110XiIII Plus

FCC ID#: I28RFID-R110XI-01

Date: 6/10/2004

Photo Description: Left Side of EuT, Cover Removed



Company: Zebra Technologies

Product: R110XiIII Plus

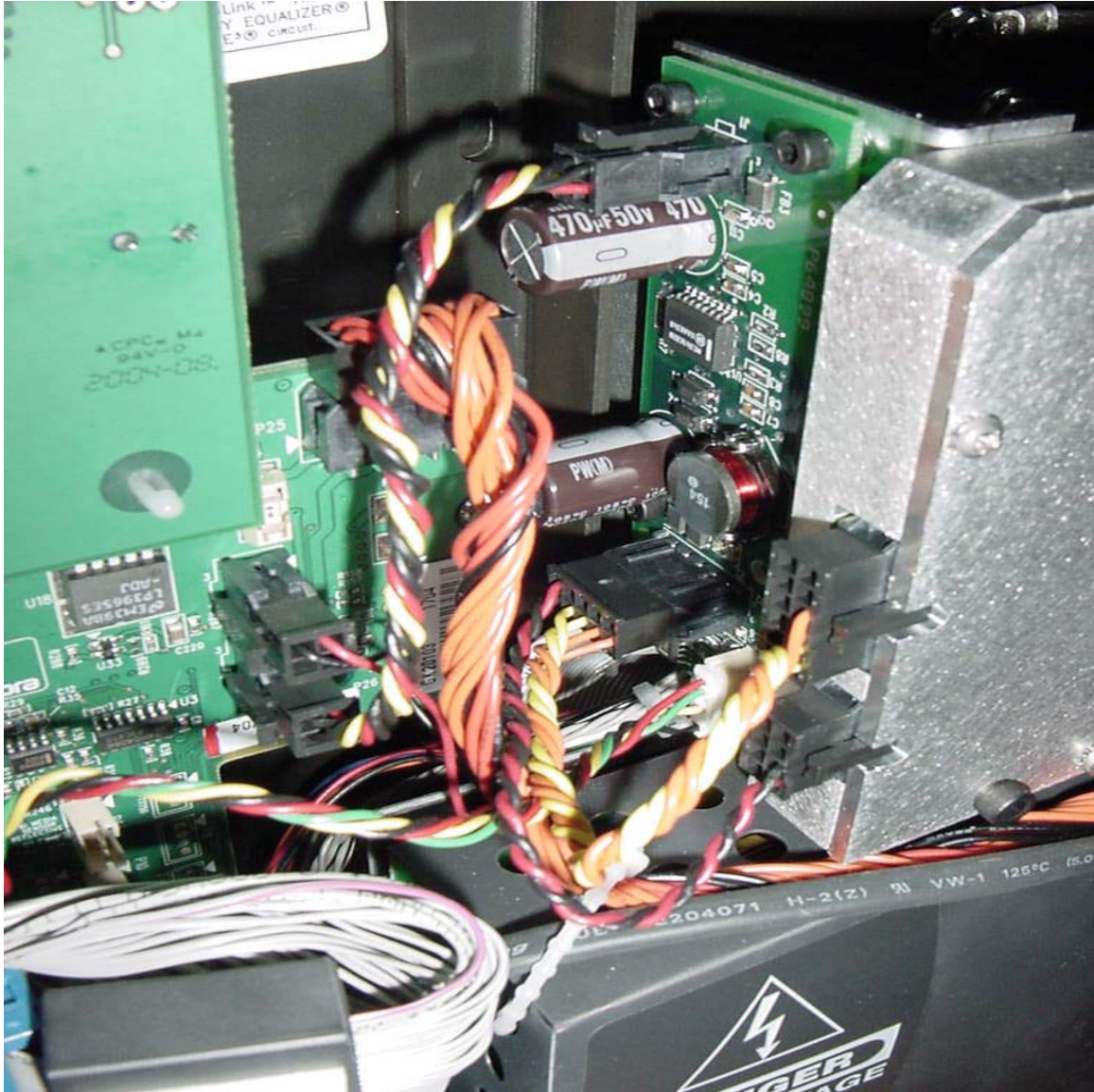
FCC ID#: I28RFID-R110XI-01

Date: 6/10/2004

Photo Description: Reader Board Placement in EuT



Company: Zebra Technologies
Product: R110XiIII Plus
FCC ID#: I28RFID-R110XI-01
Date: 6/10/2004
Photo Description: **Power Filter Board Placement in EuT**



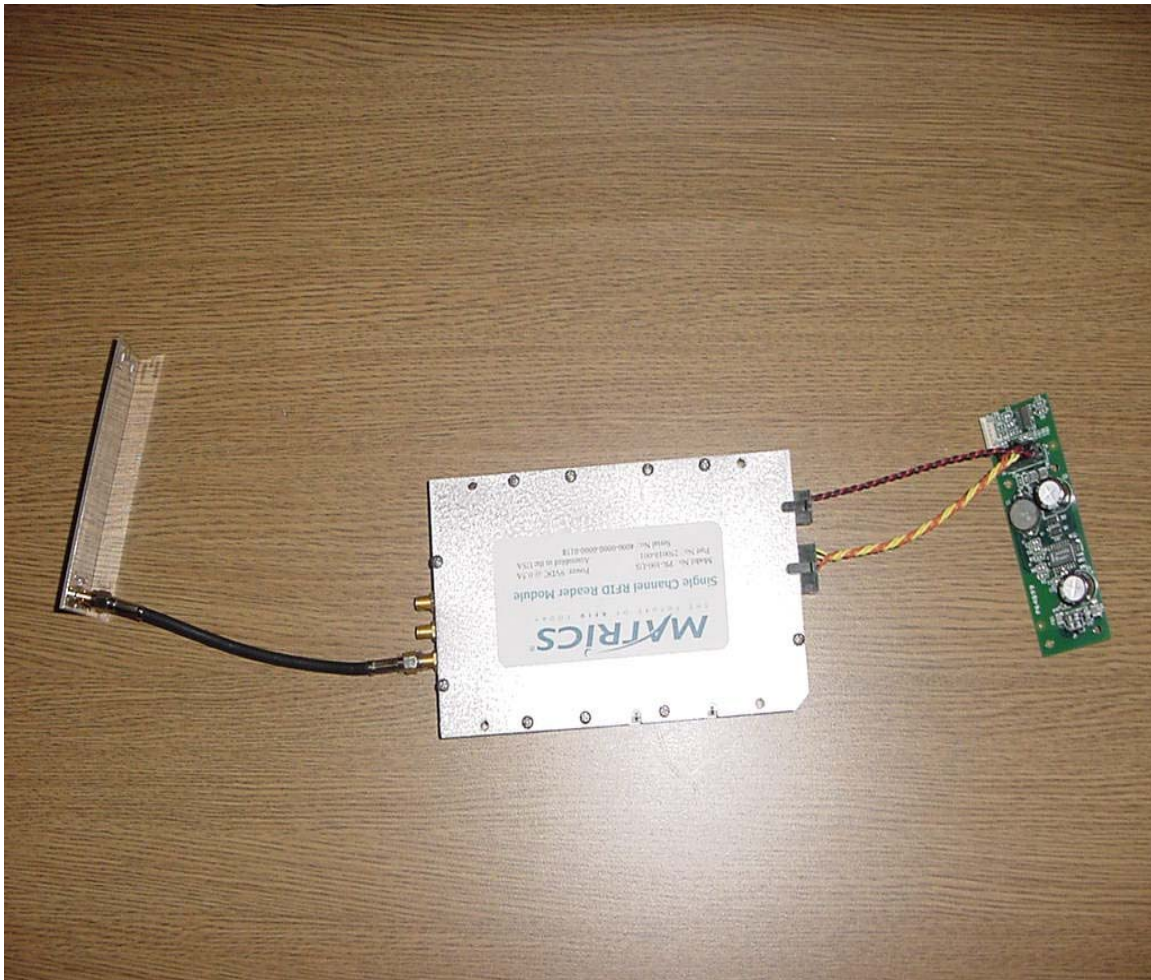
Company: Zebra Technologies

Product: R110XiIII Plus

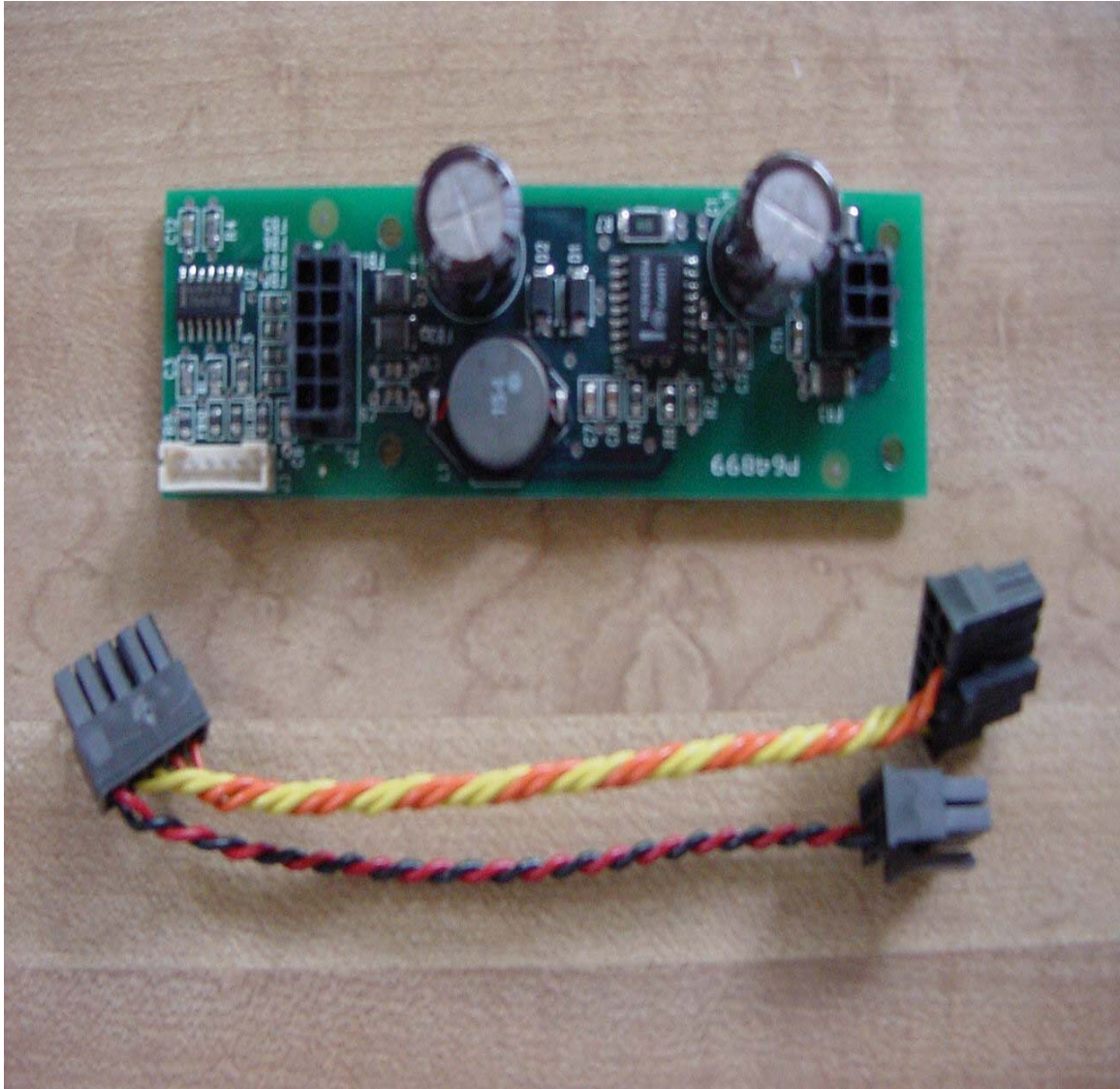
FCC ID#: I28RFID-R110XI-01

Date: 6/10/2004

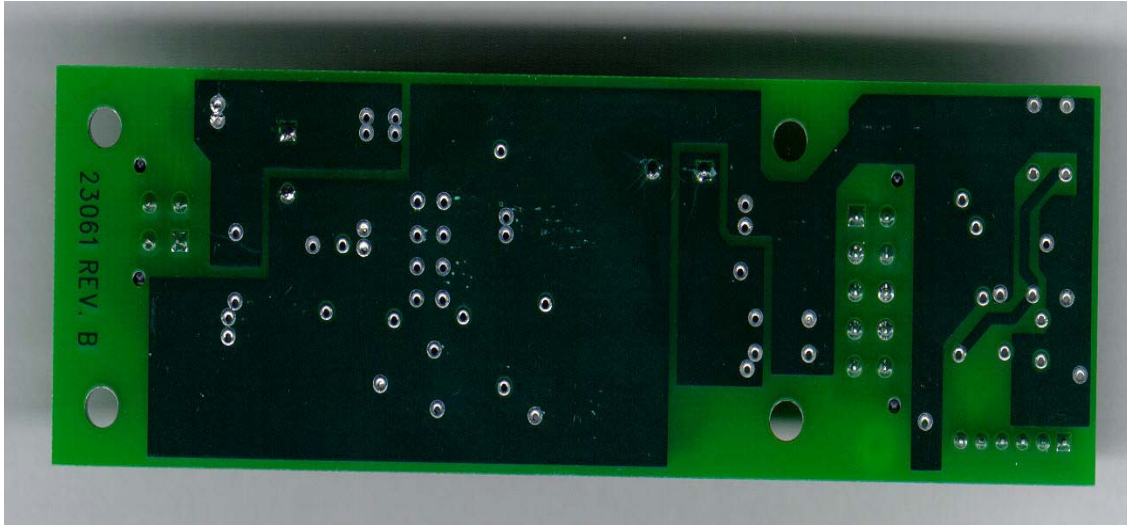
Photo Description: **Reader Board Assembly, Power Filter Board and Antenna Assembly Connected**



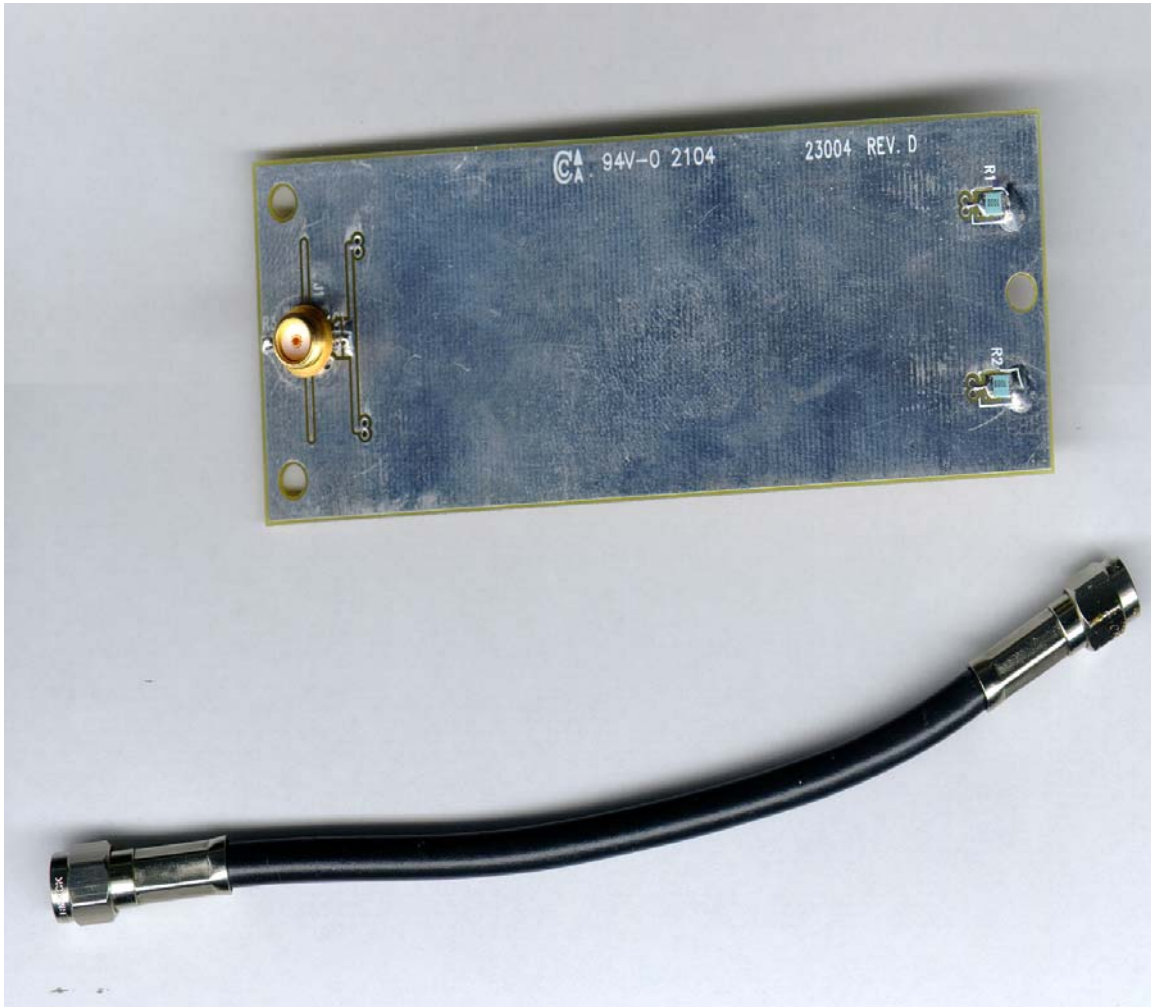
Company: Zebra Technologies
Product: R110XiIII Plus
FCC ID#: I28RFID-R110XI-01
Date: 6/10/2004
Photo Description: **Component Side of Filter Board**



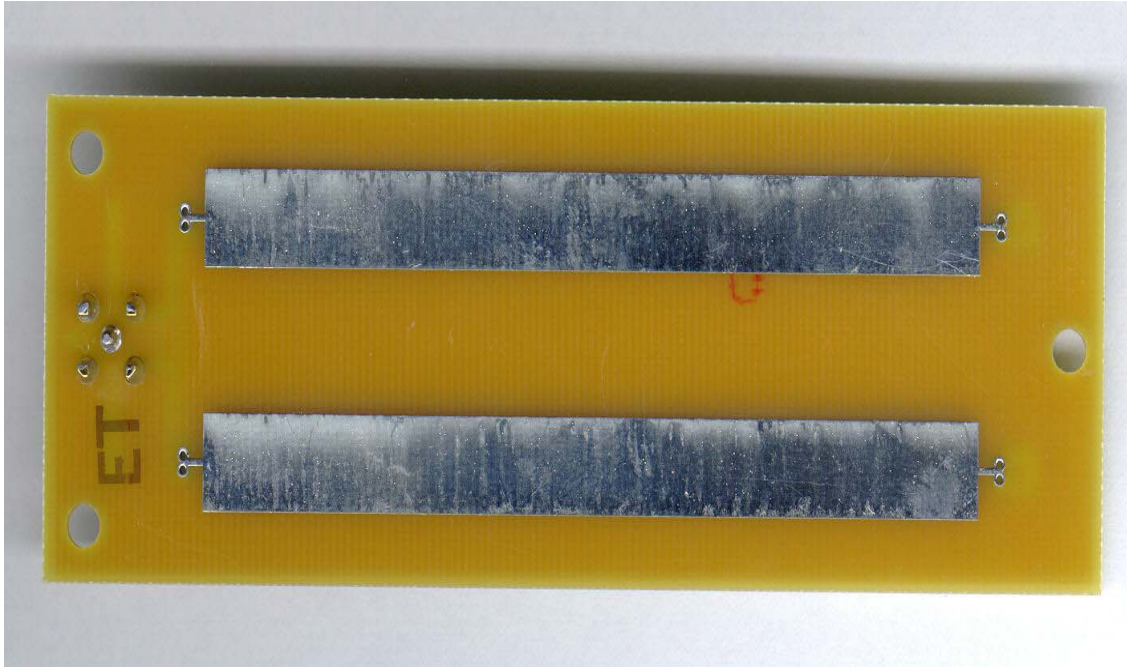
Company: Zebra Technologies
Product: R110XiIII Plus
FCC ID#: I28RFID-R110XI-01
Date: 6/10/2004
Photo Description: Trace Side of Filter Board



Company: Zebra Technologies
Product: R110XiIII Plus
FCC ID#: I28RFID-R110XI-01
Date: 6/10/2004
Photo Description: **Top Side of Antenna**



Company: Zebra Technologies
Product: R110XiIII Plus
FCC ID#: I28RFID-R110XI-01
Date: 6/10/2004
Photo Description: **Bottom Side of Antenna**



Company: Zebra Technologies
Product: R110XiIII Plus
FCC ID#: I28RFID-R110XI-01
Date: 6/10/2004
Photo Description: Top Side of Reader Board



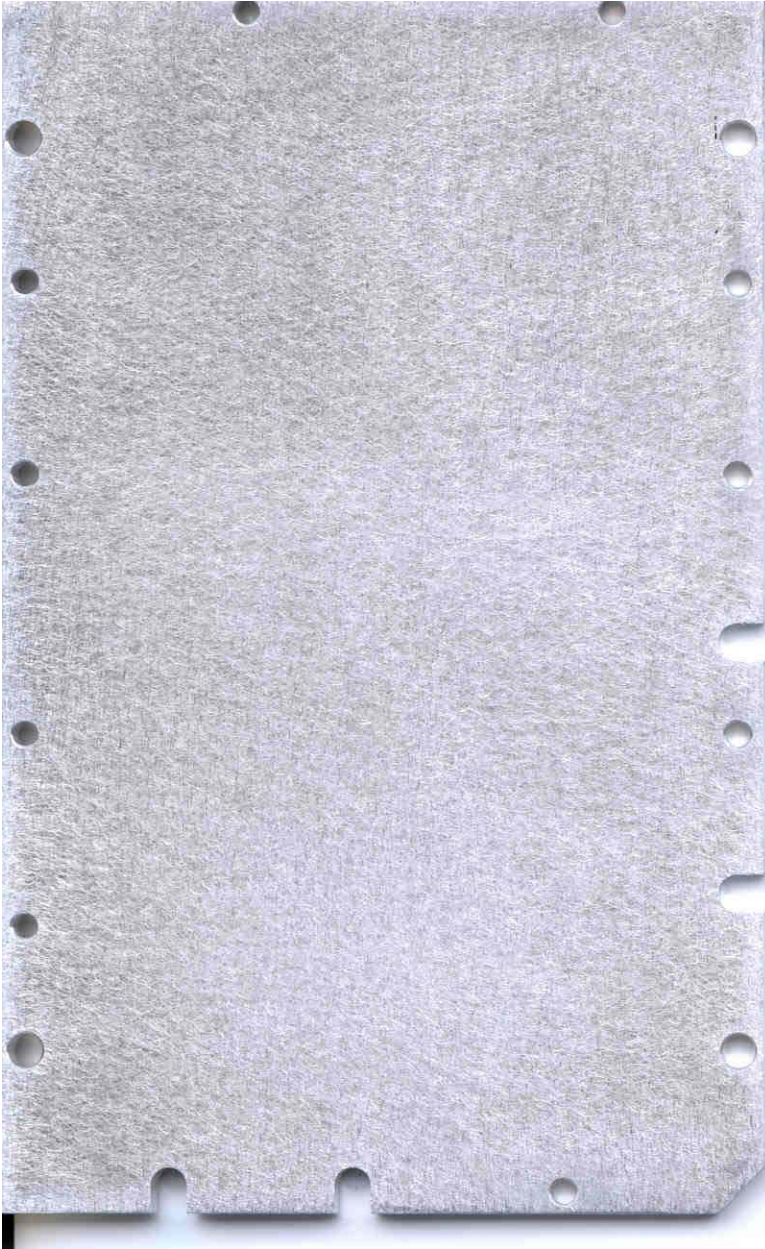
Company: Zebra Technologies

Product: R110XiIII Plus

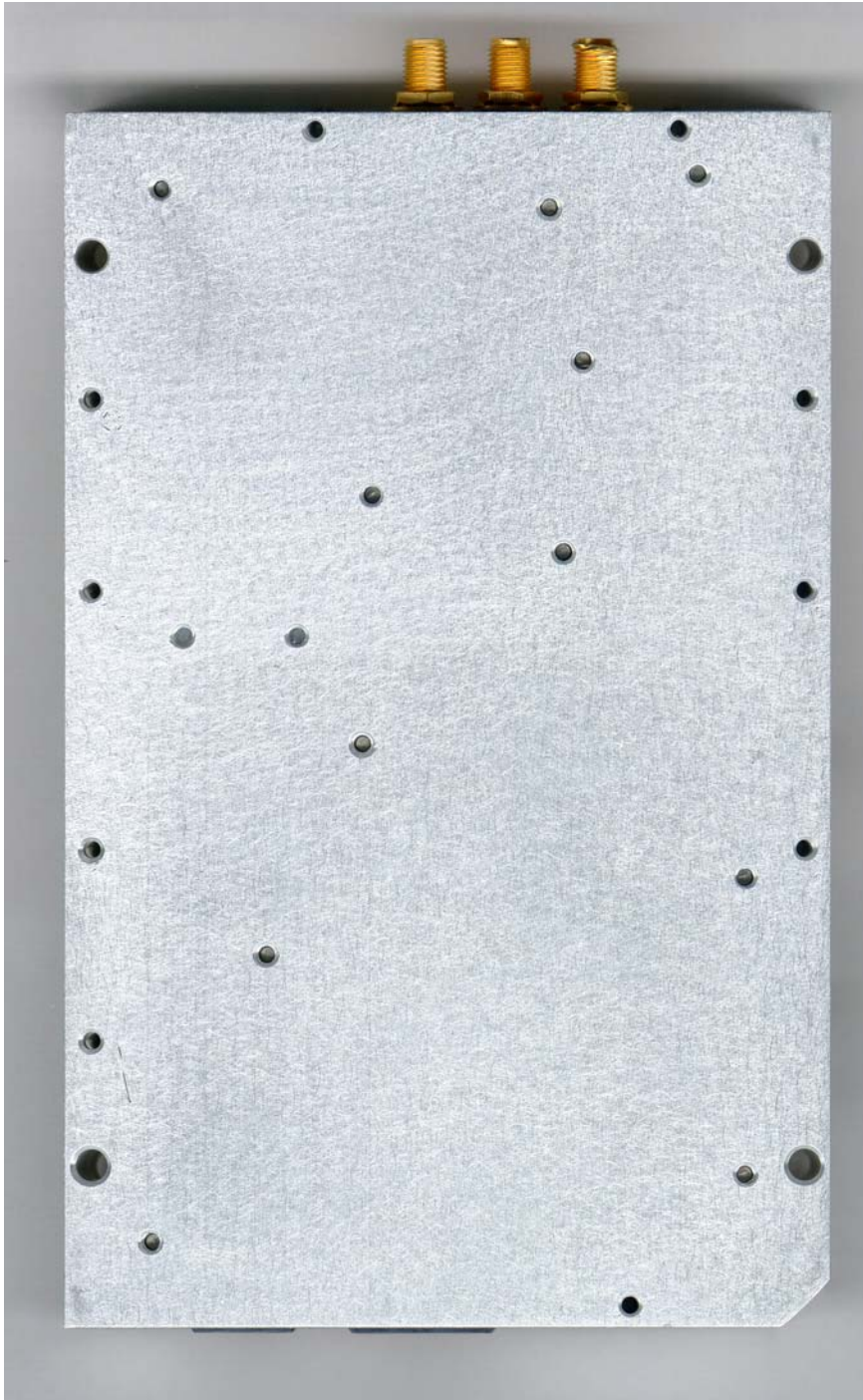
FCC ID#: I28RFID-R110XI-01

Date: 6/10/2004

Photo Description: **Inside Top Cover of Reader Board**



Company: Zebra Technologies
Product: R110XiIII Plus
FCC ID#: I28RFID-R110XI-01
Date: 6/10/2004
Photo Description: **Bottom Side of Reader Board**



Company: Zebra Technologies

Product: R110XiIII Plus

FCC ID#: I28RFID-R110XI-01

Date: 6/10/2004

Photo Description: **Inside Bottom Cover of Reader Board**



Company: Zebra Technologies
Product: R110XiIII Plus
FCC ID#: I28RFID-R110XI-01
Date: 6/10/2004
Photo Description: Component Side of Reader PCB



Company: Zebra Technologies
Product: R110XiIII Plus
FCC ID#: I28RFID-R110XI-01
Date: 6/10/2004
Photo Description: Trace Side of Reader PCB

