

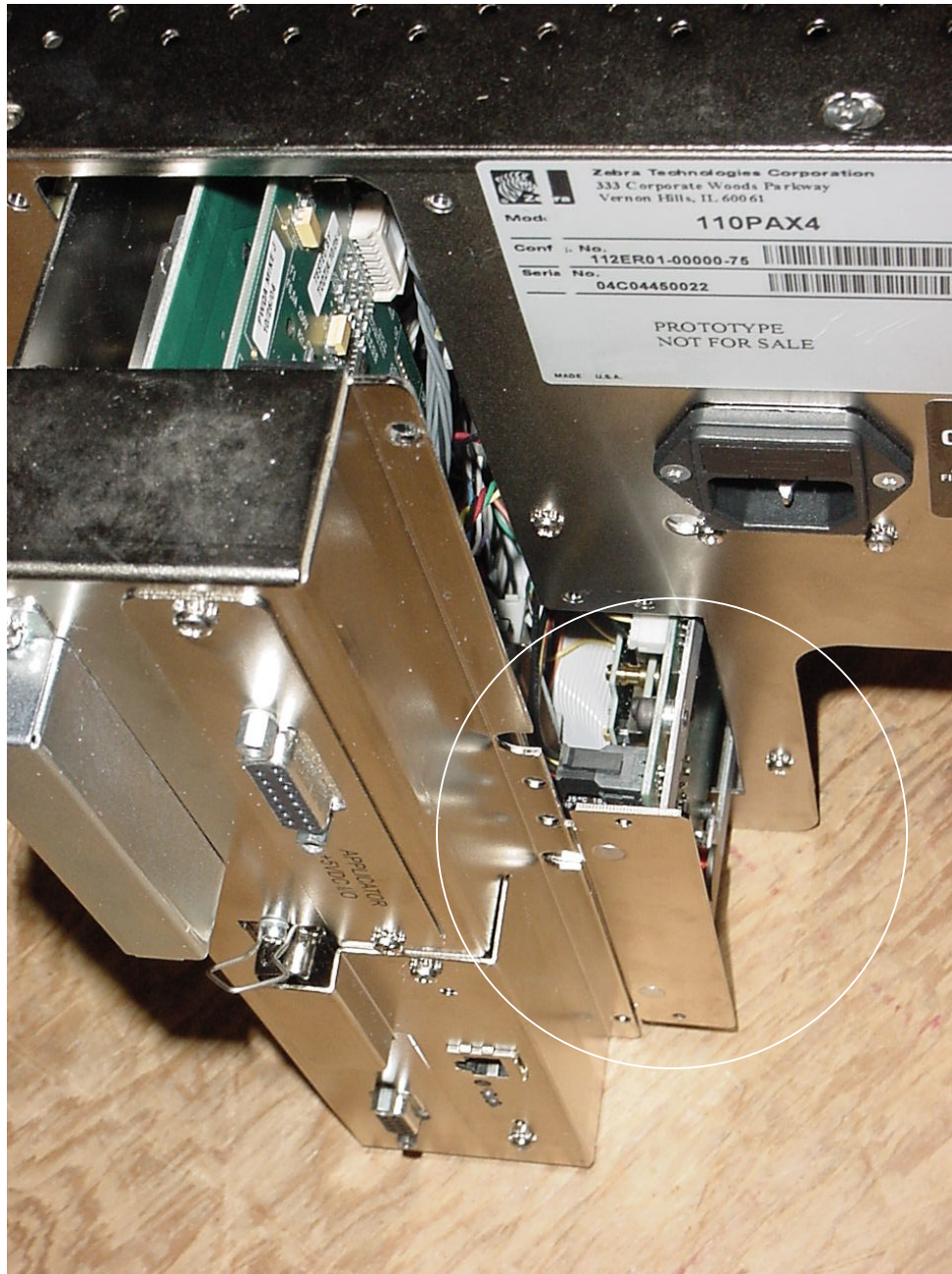
Company: Zebra Technologies Corporation

Product: R110PAX4

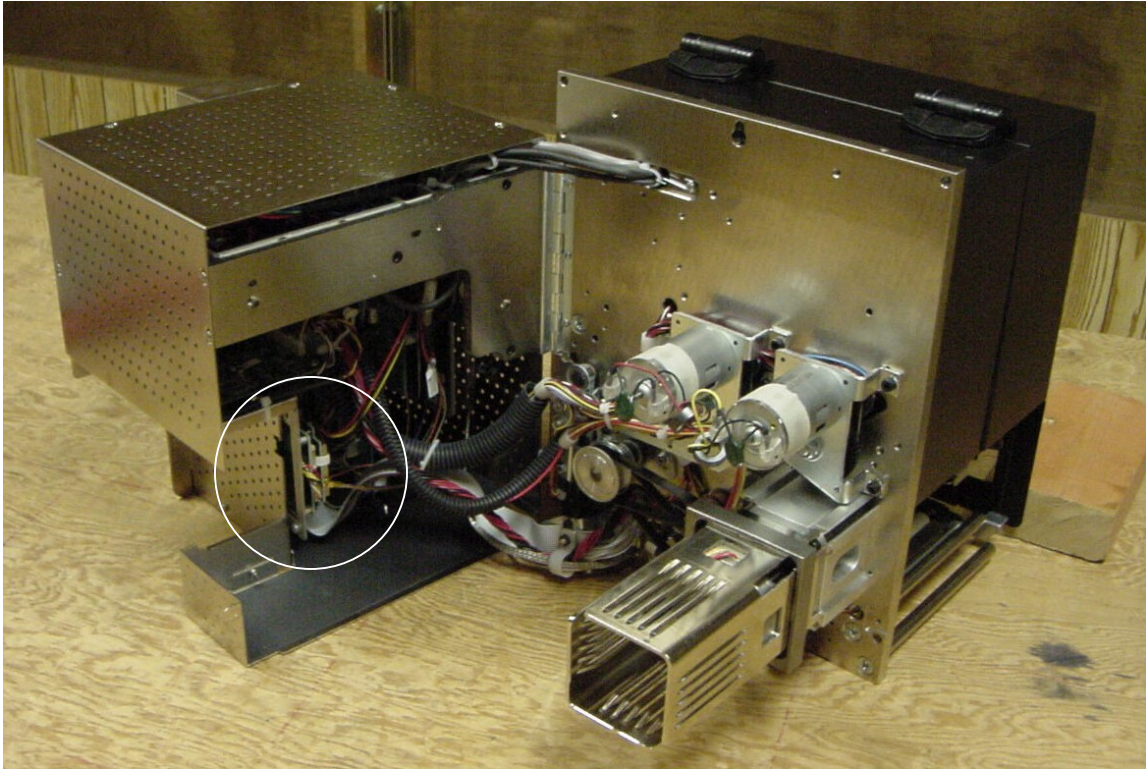
FCC ID#: I28RFID-R110PAX02

Date: 1/7/2005

Photo Description: **Printer – Printed circuit boards mounting bracket**



Company: Zebra Technologies Corporation  
Product: R110PAX4  
FCC ID#: I28RFID-R110PAX02  
Date: 1/7/2005  
Photo Description: **Printer – Inside view**



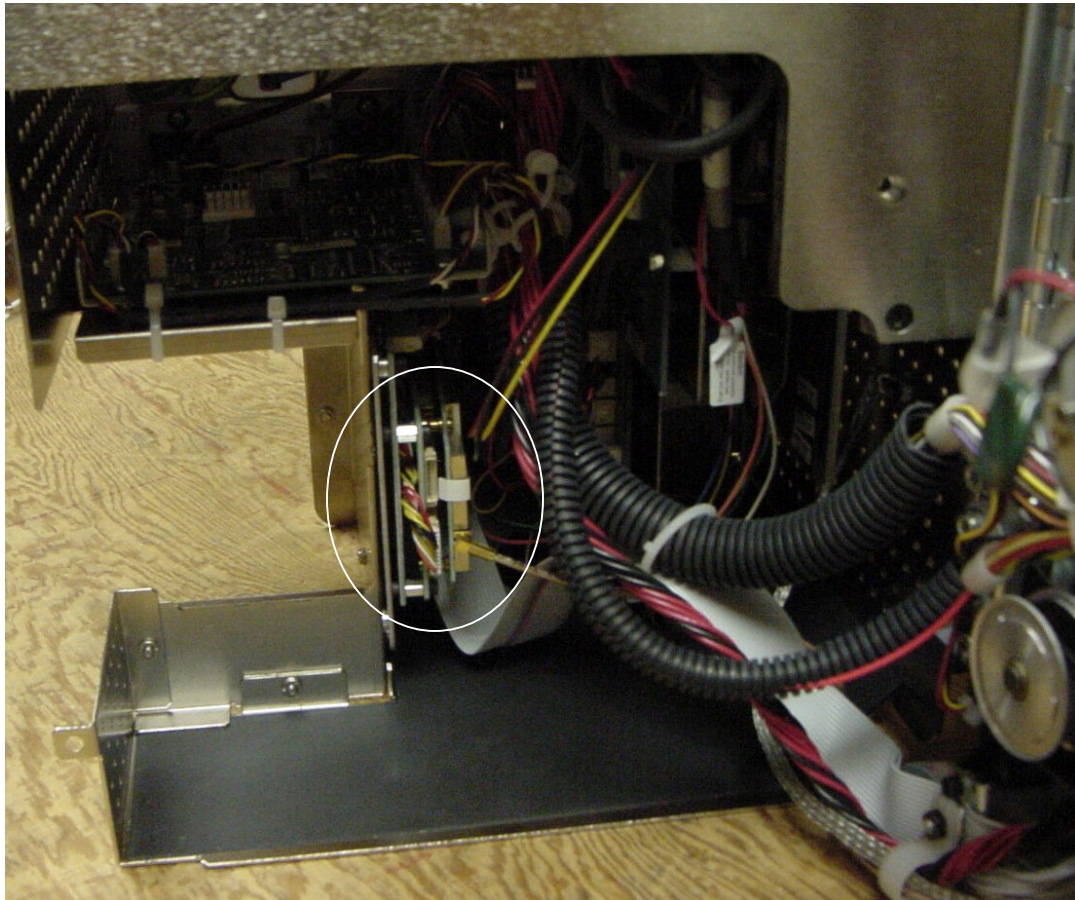
Company: Zebra Technologies Corporation

Product: R110PAX4

FCC ID#: I28RFID-R110PAX02

Date: 1/7/2005

Photo Description: **Printer – Inside view – reader location**



Company: Zebra Technologies Corporation

Product: R110PAX4

FCC ID#: I28RFID-R110PAX02

Date: 1/7/2005

Photo Description: **Reader assembly with Coupler\Antenna & cables**

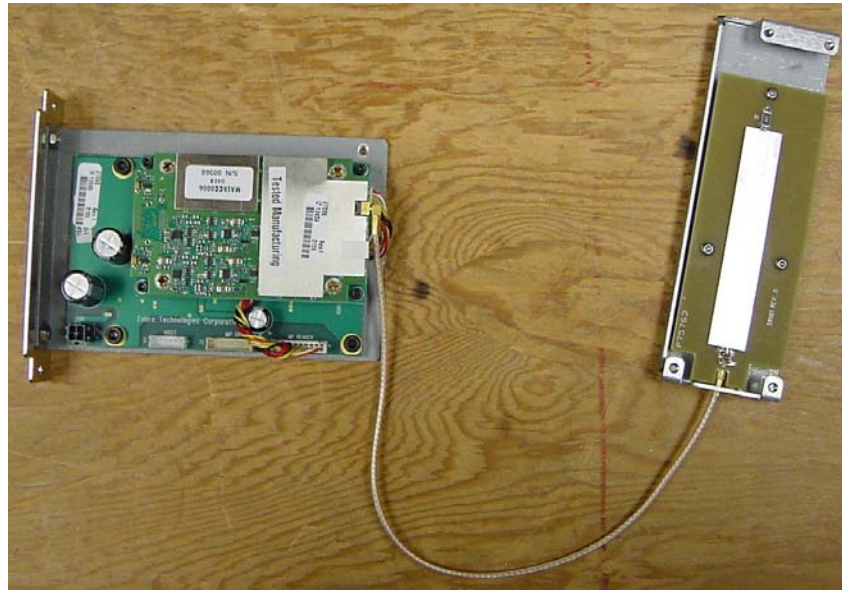
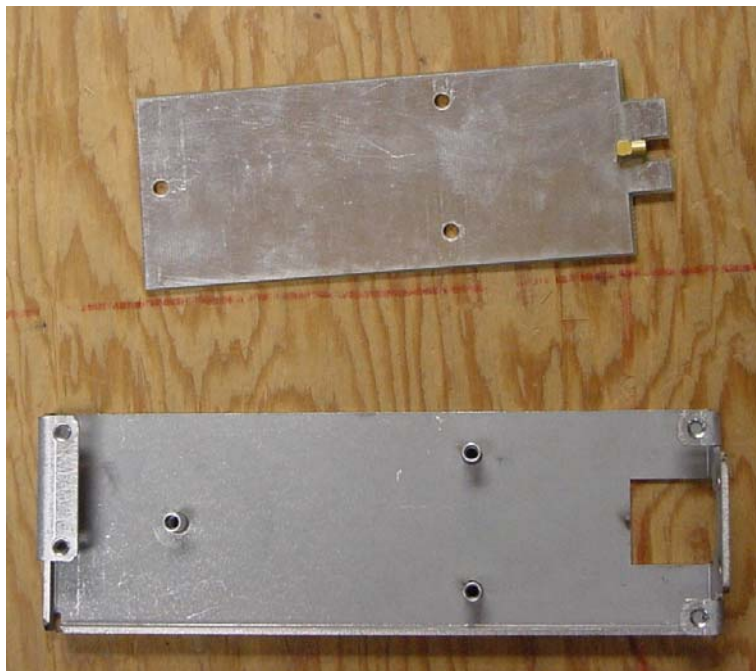
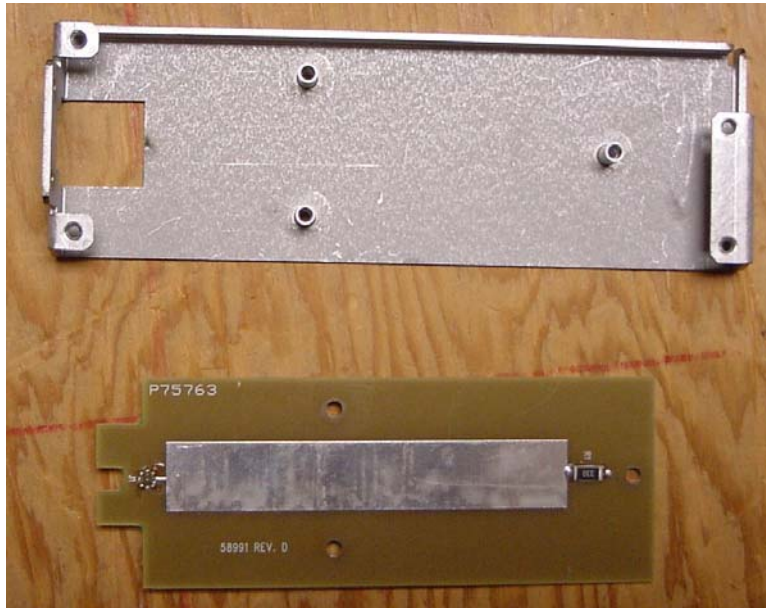


Photo Description: **Reader assembly with Coupler\Antenna & cables**  
(continued)



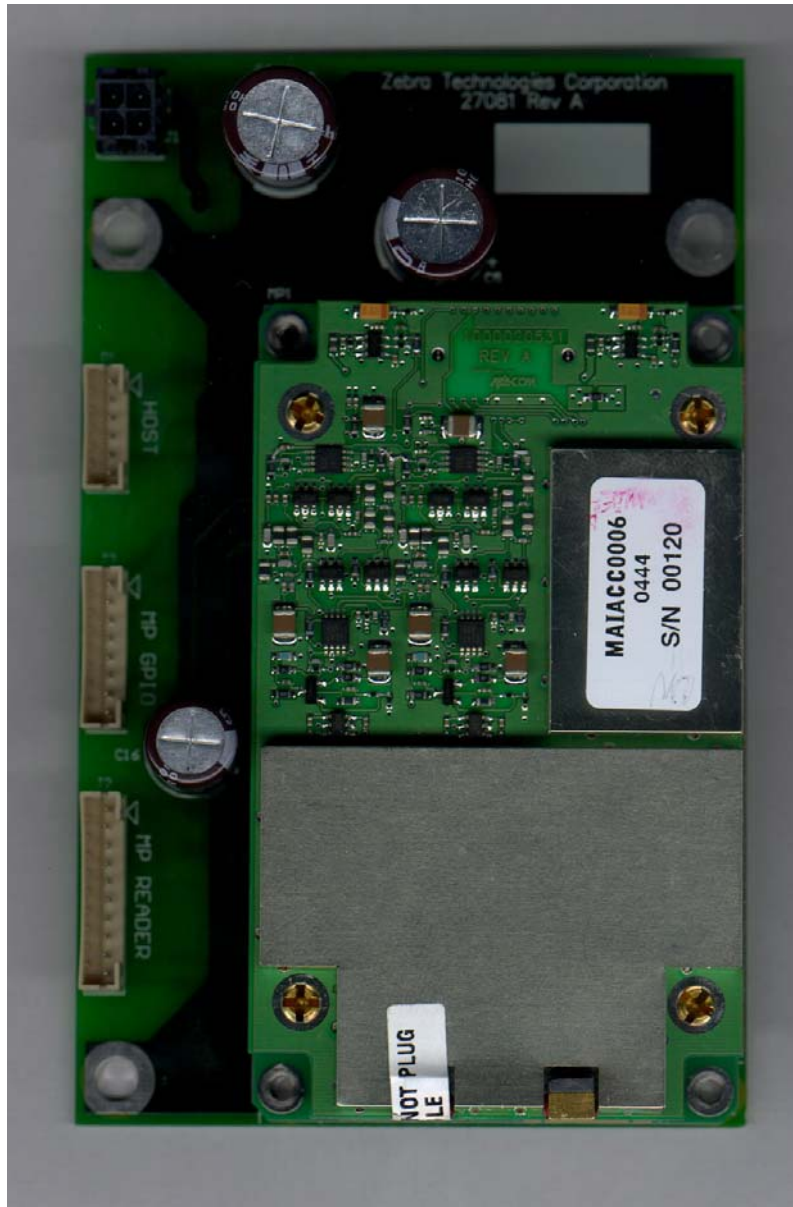
Company: Zebra Technologies Corporation

Product: R110PAX4

FCC ID#: I28RFID-R110PAX02

Date: 1/7/2005

Photo Description: **RF, Digital, Power board assembly – top view**



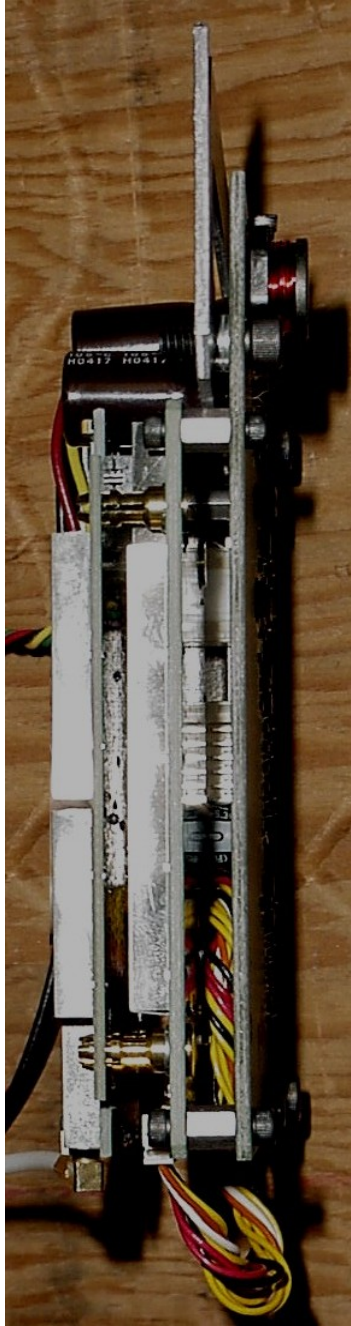
Company: Zebra Technologies Corporation

Product: R110PAX4

FCC ID#: I28RFID-R110PAX02

Date: 1/7/2005

Photo Description: **Reader Assembly – side view**



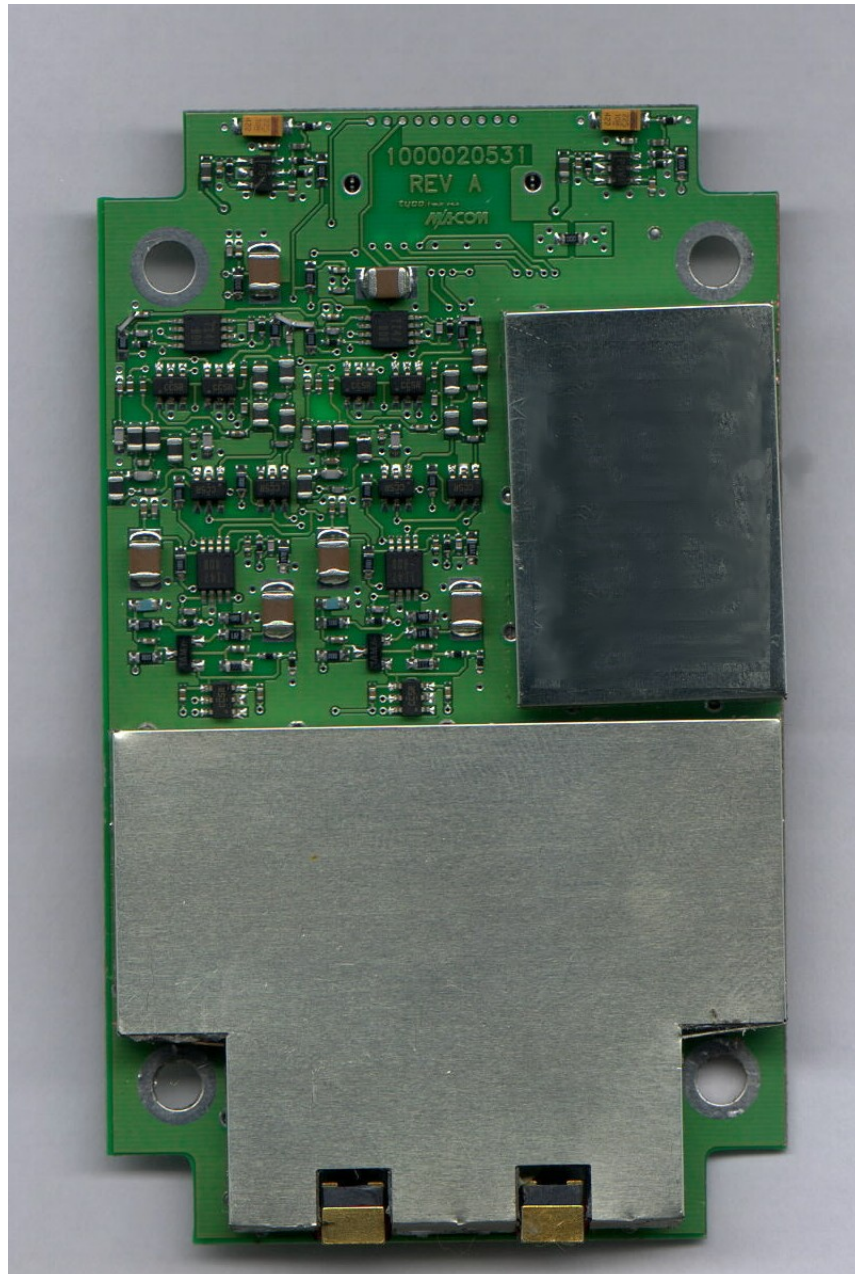
Company: Zebra Technologies Corporation

Product: R110PAX4

FCC ID#: I28RFID-R110PAX02

Date: 1/7/2005

Photo Description: **RF board – top side with shield can**





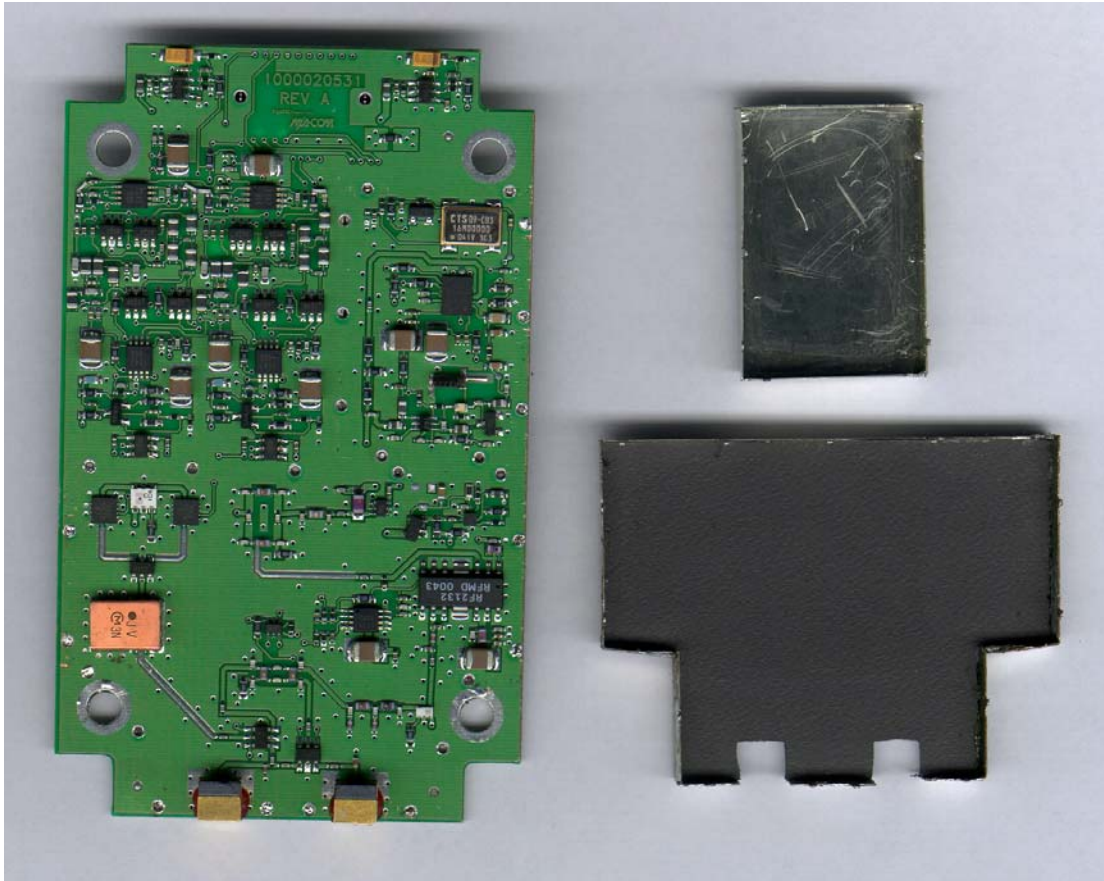
Company: Zebra Technologies Corporation

Product: R110PAX4

FCC ID#: I28RFID-R110PAX02

Date: 1/7/2005

Photo Description: **Top side RF board; Inside of shield cans**



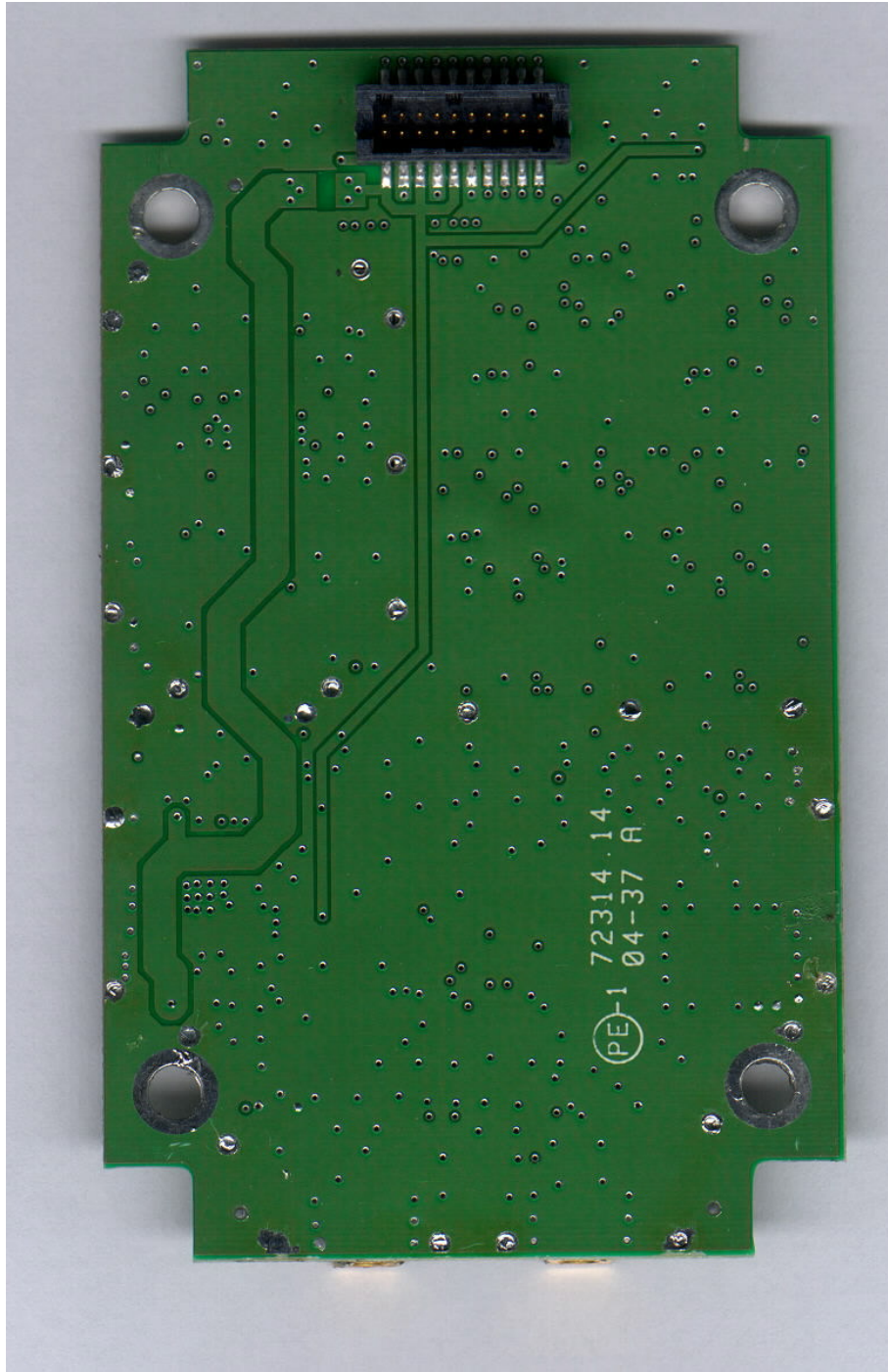
Company: Zebra Technologies Corporation

Product: R110PAX4

FCC ID#: I28RFID-R110PAX02

Date: 1/7/2005

Photo Description: **Bottom side RF board**



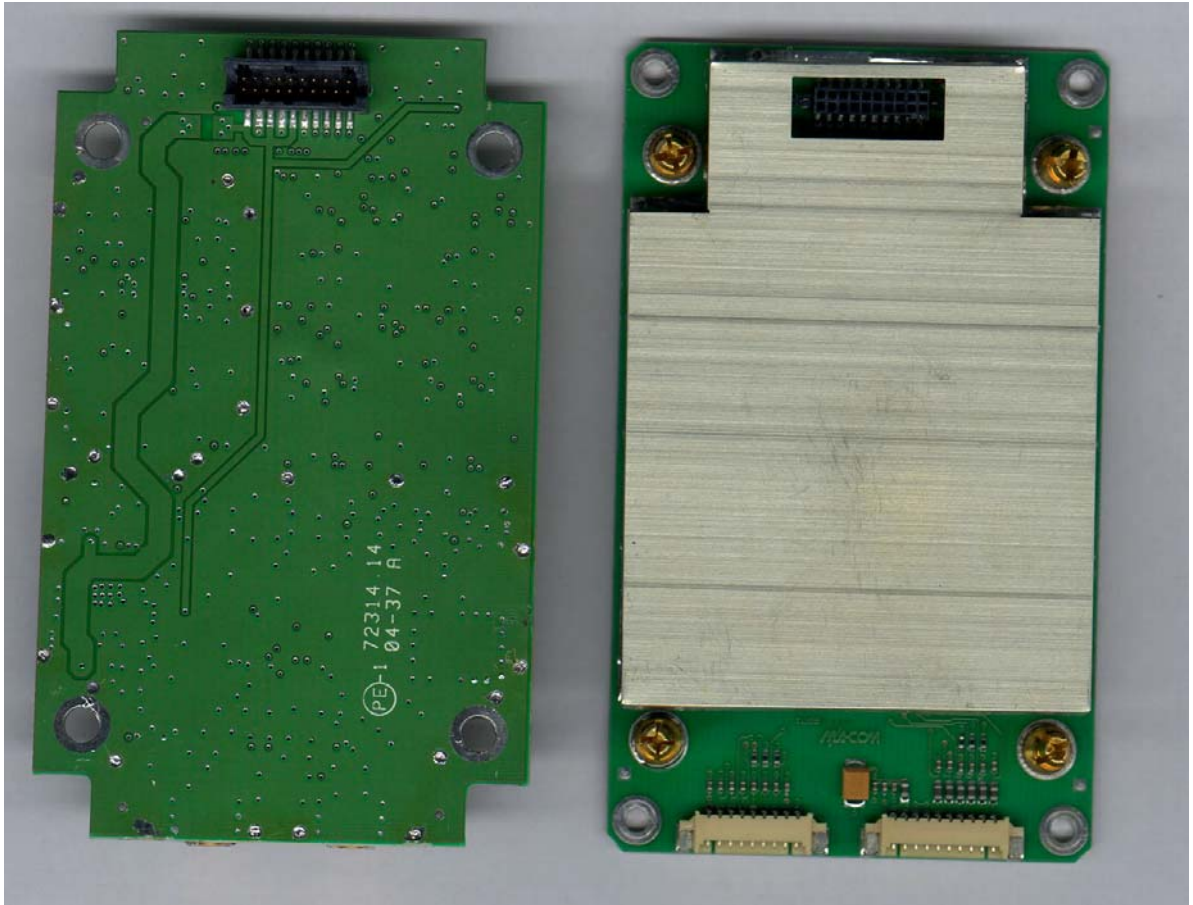
Company: Zebra Technologies Corporation

Product: R110PAX4

FCC ID#: I28RFID-R110PAX02

Date: 1/7/2005

Photo Description: **RF & Digital boards, disassembled**



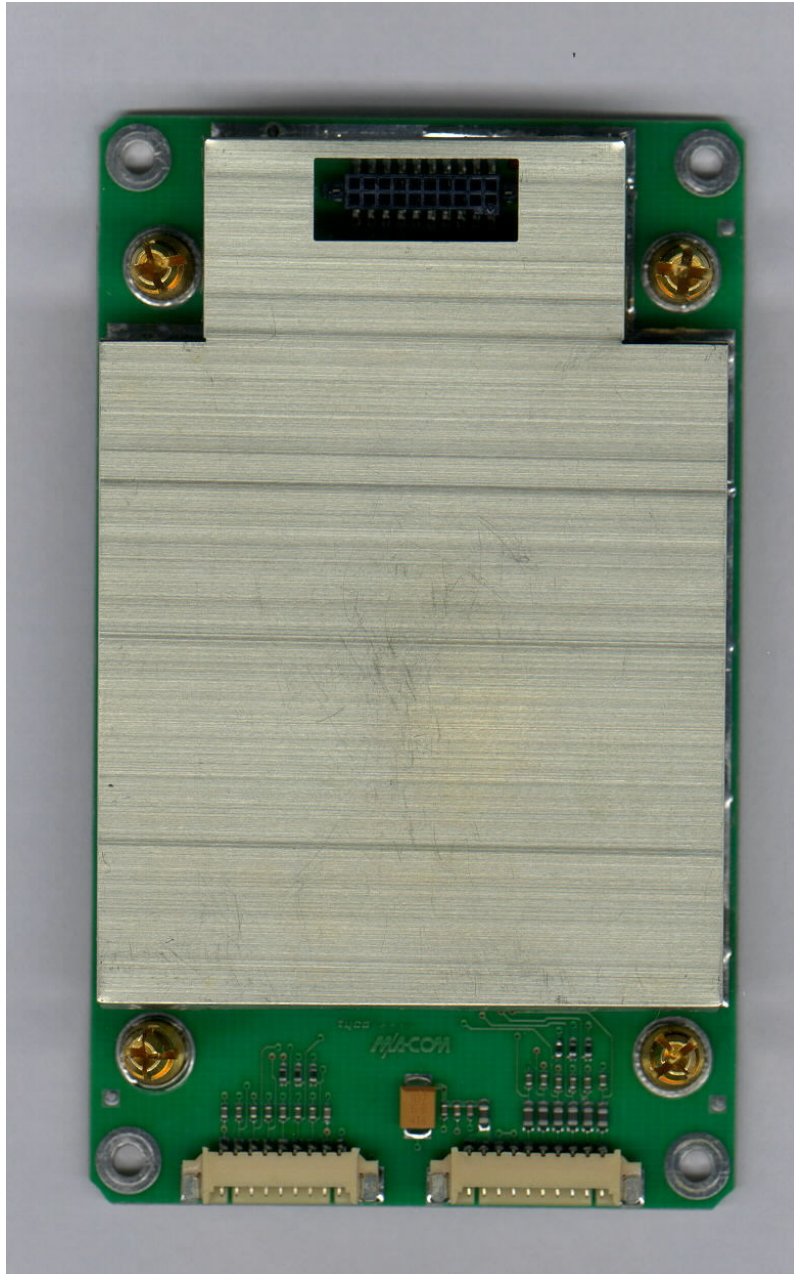
Company: Zebra Technologies Corporation

Product: R110PAX4

FCC ID#: I28RFID-R110PAX02

Date: 1/7/2005

Photo Description: **Digital board – top side with shield can**



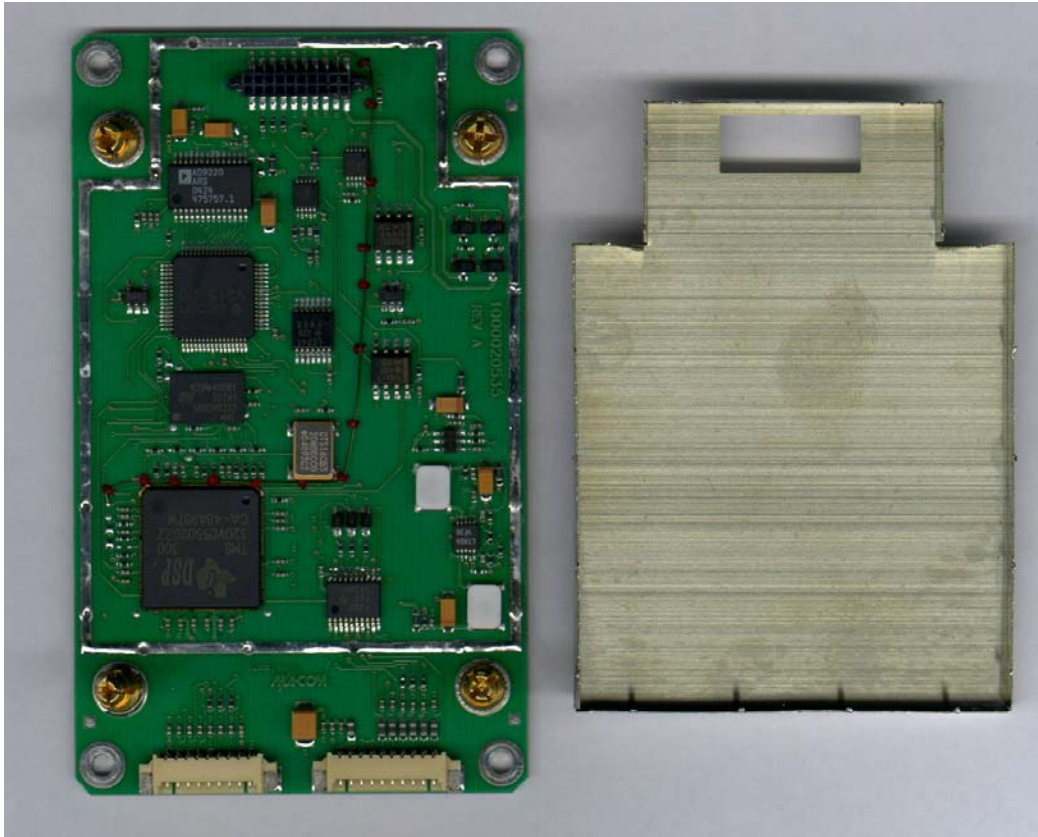
Company: Zebra Technologies Corporation

Product: R110PAX4

FCC ID#: I28RFID-R110PAX02

Date: 1/7/2005

Photo Description: **Digital board – top side; Shield can - inside**



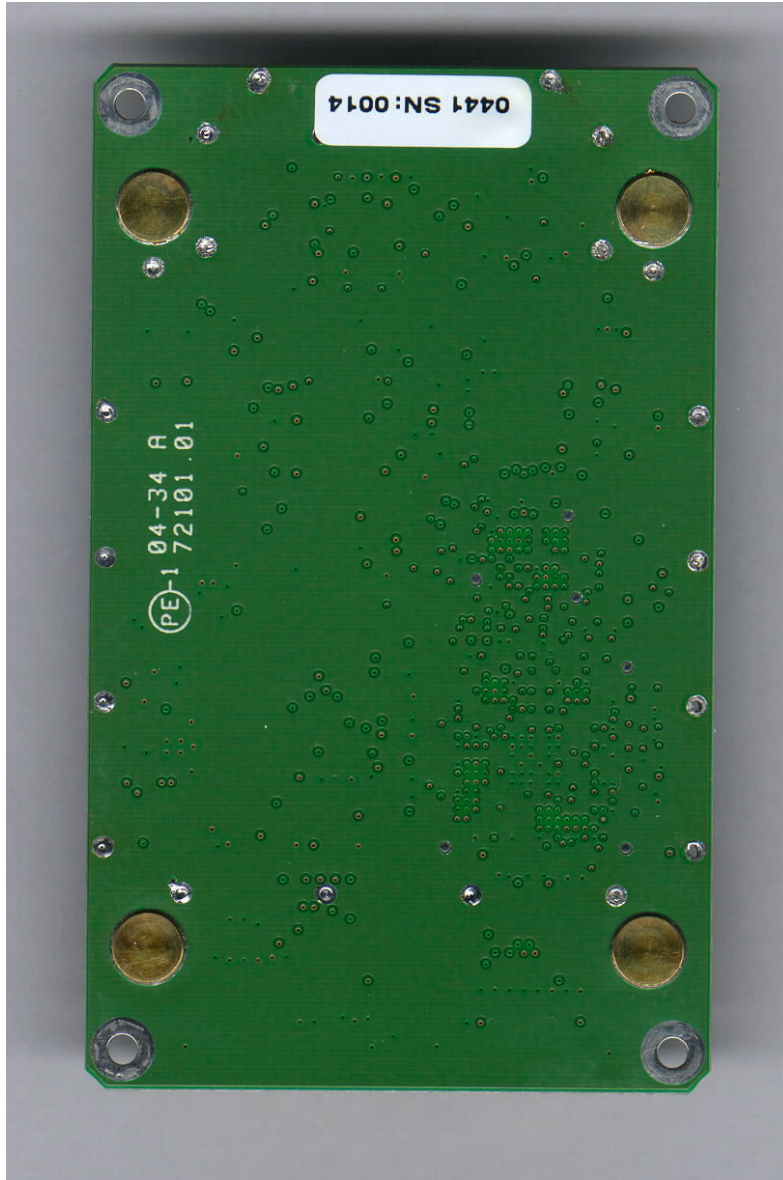
Company: Zebra Technologies Corporation

Product: R110PAX4

FCC ID#: I28RFID-R110PAX02

Date: 1/7/2005

Photo Description: **Digital board – bottom side**



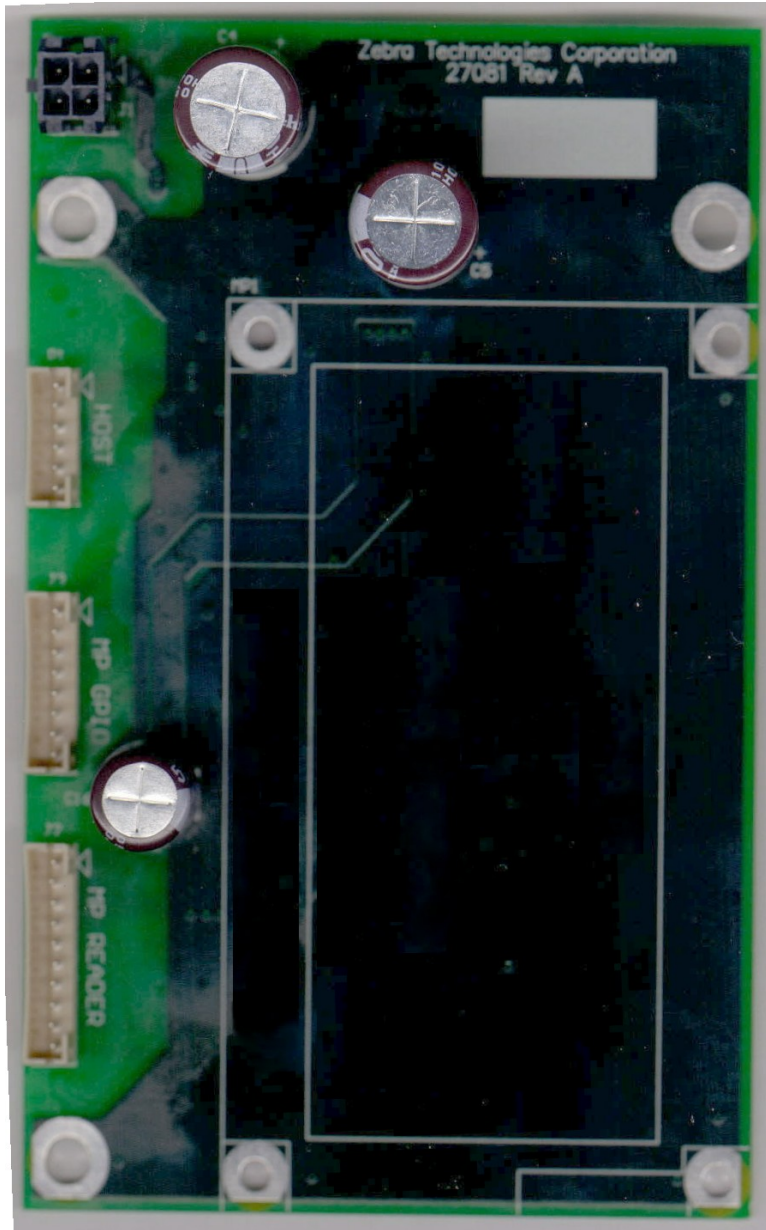
Company: Zebra Technologies Corporation

Product: R110PAX4

FCC ID#: I28RFID-R110PAX02

Date: 1/7/2005

Photo Description: **Power adaptor board – top side**



Company: Zebra Technologies Corporation

Product: R110PAX4

FCC ID#: I28RFID-R110PAX02

Date: 1/7/2005

Photo Description: **Power adaptor board – bottom side**

