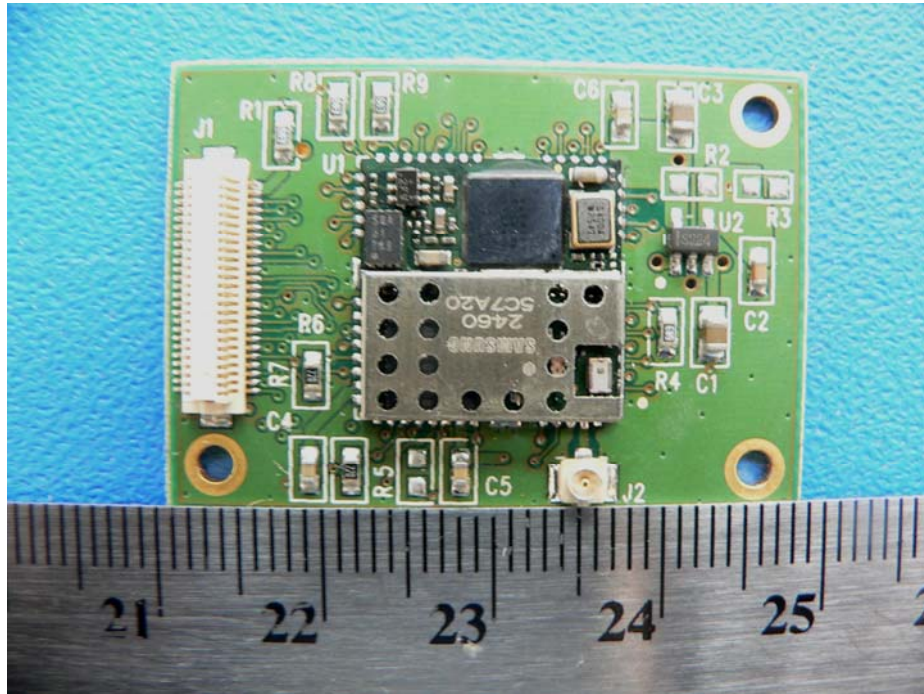
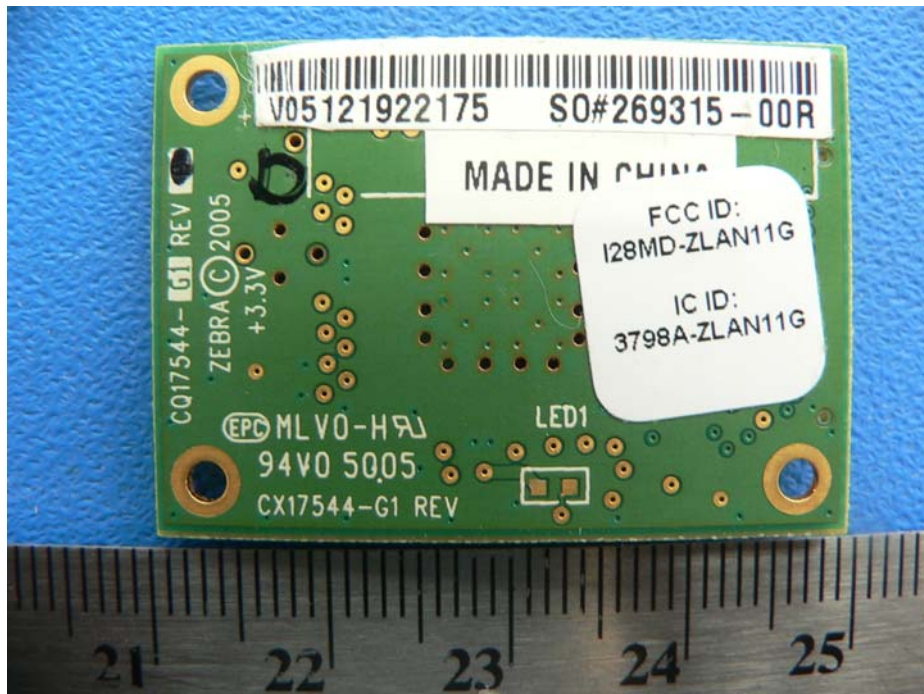


EXHIBIT C - EUT PHOTOGRAPHS

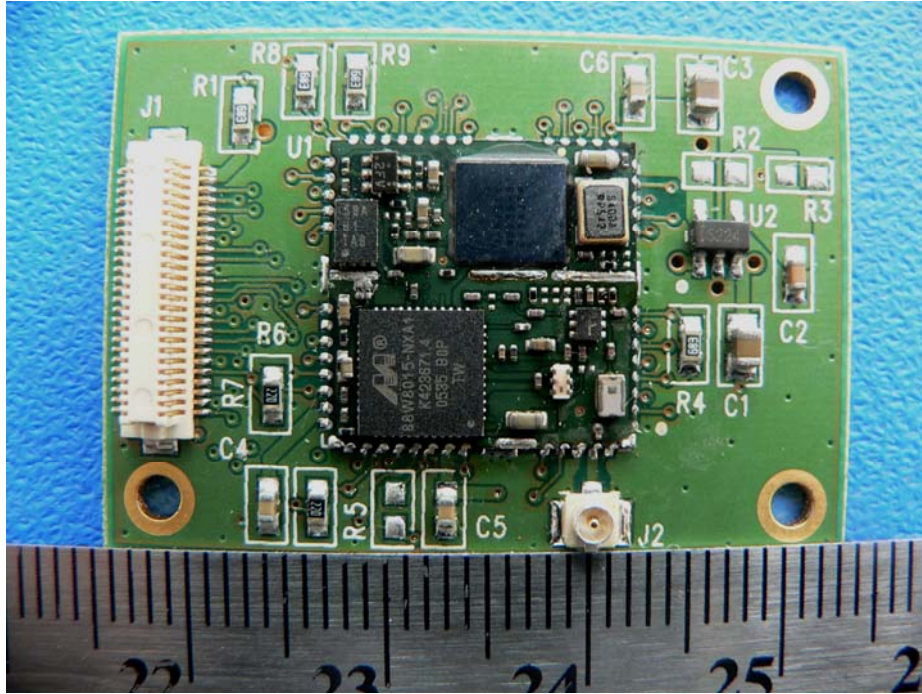
EUT –Transceiver component side view



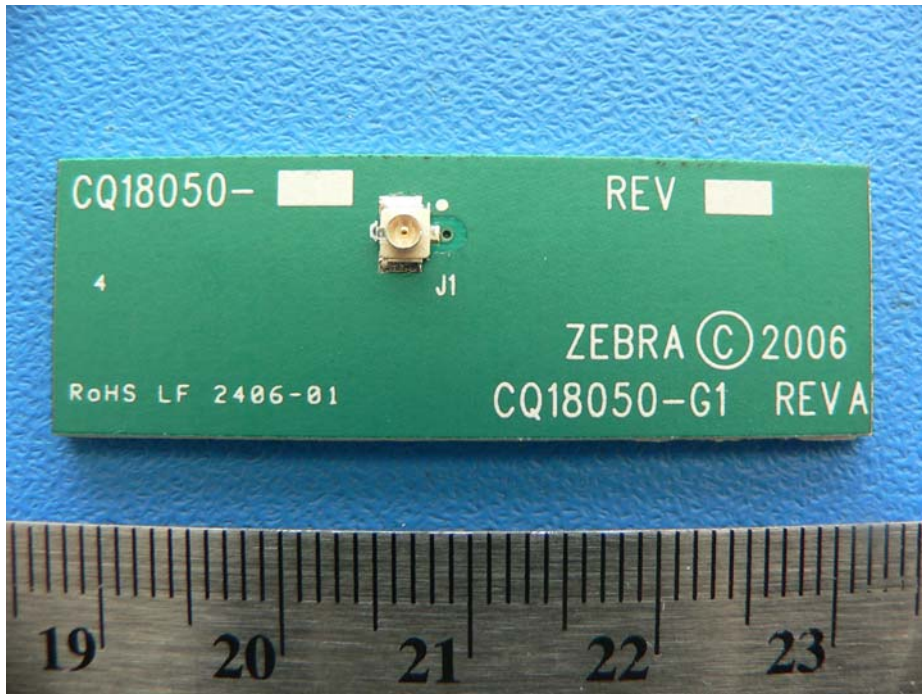
EUT – Transceiver solder side view



EUT – Transceiver RF shield off view



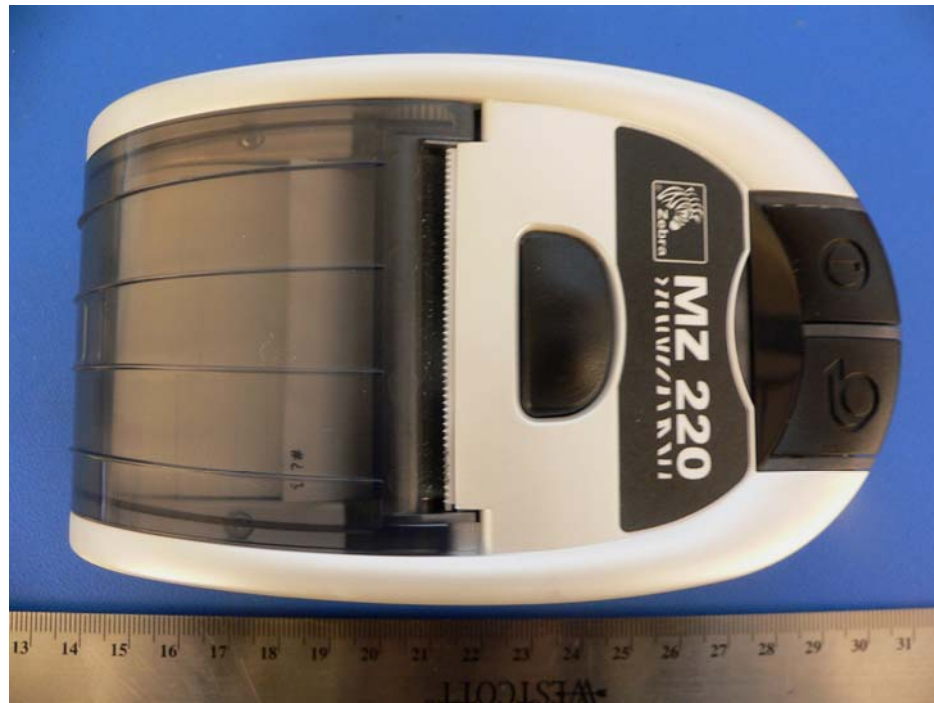
EUT – Antenna port view



EUT –Antenna back side view



Host Top view



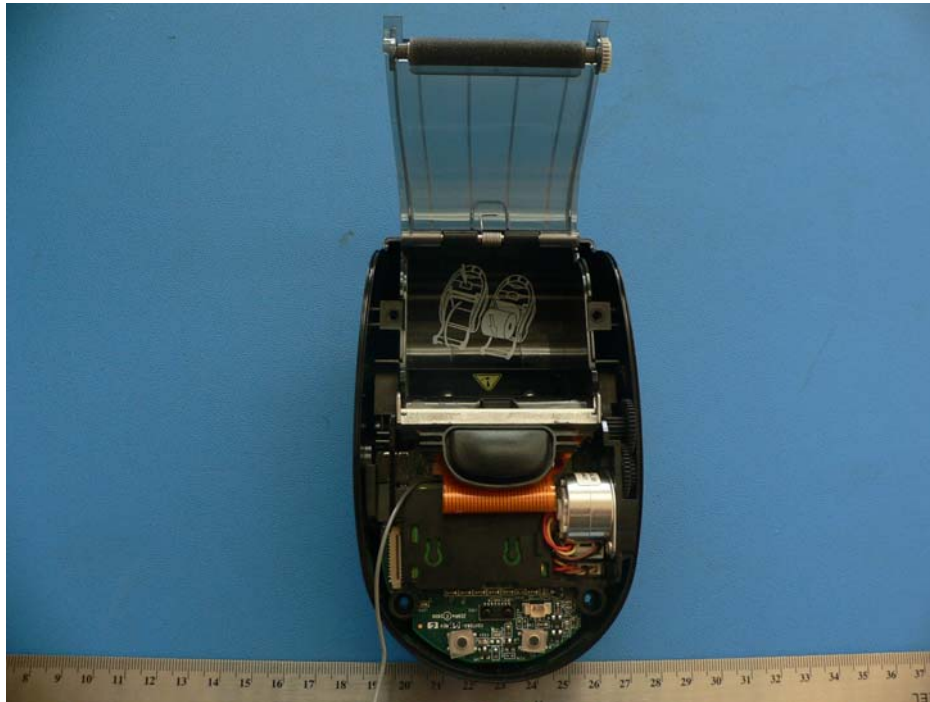
Host Bottom side view



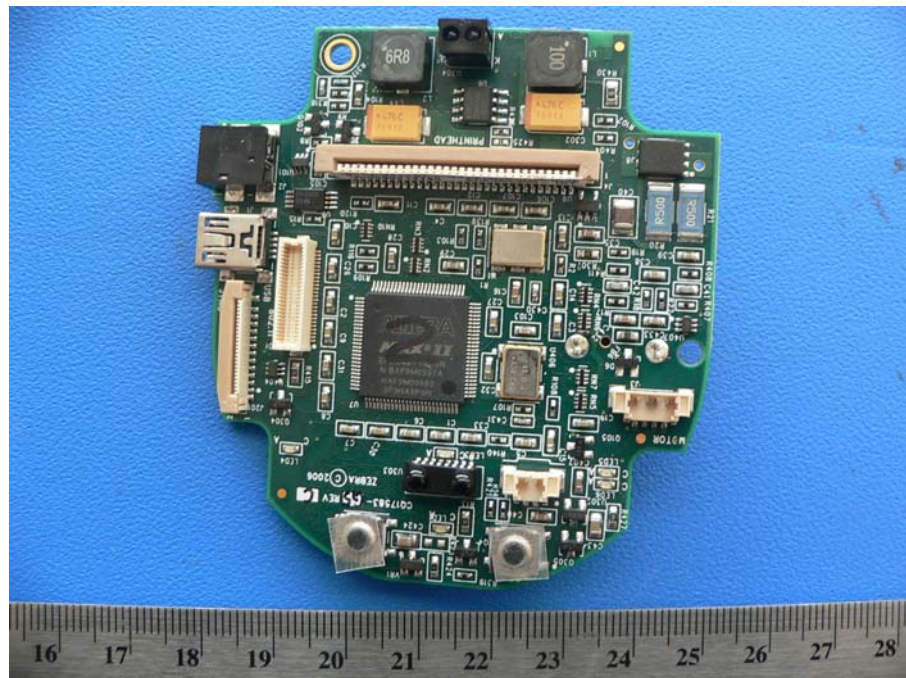
Host Side view



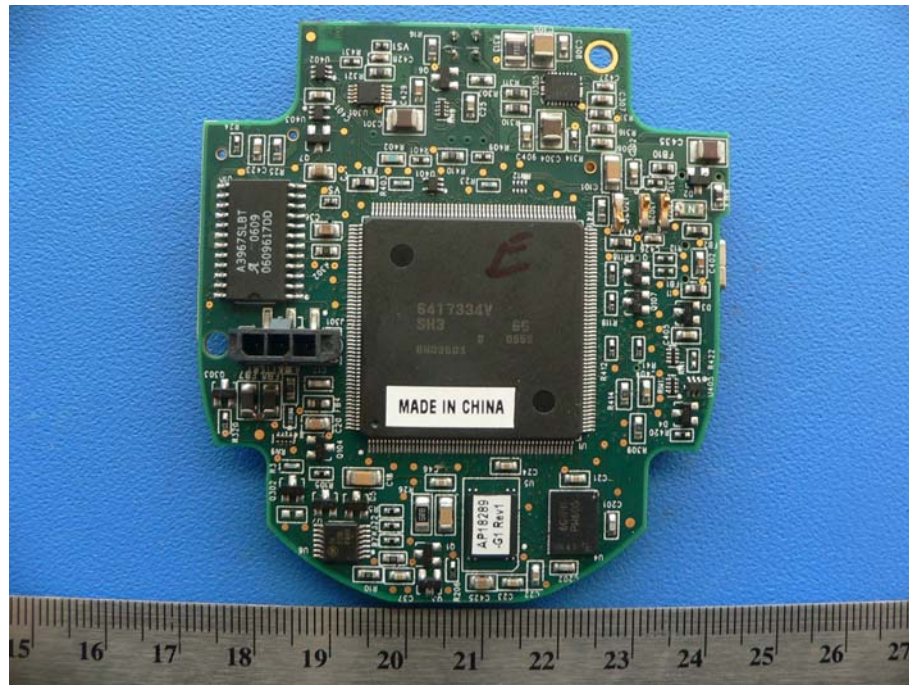
Host Chassis off View



Host PCB Component Side View



Host PCB Solder Side View



Power supply view



Battery view

