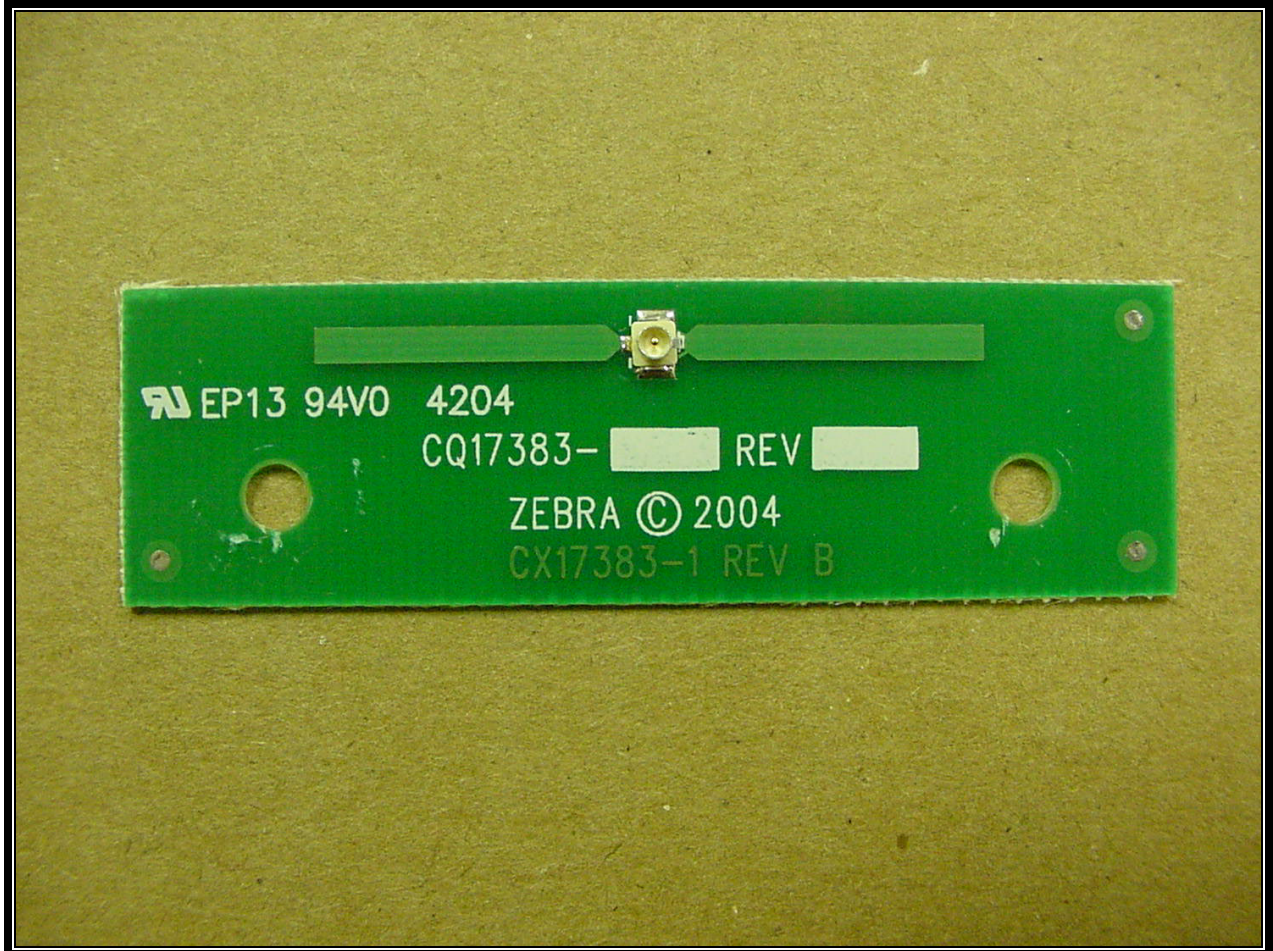


Rhein Tech Laboratories, Inc.
360 Herndon Parkway
Suite 1400
Herndon, VA 20170
<http://www.rheintech.com>

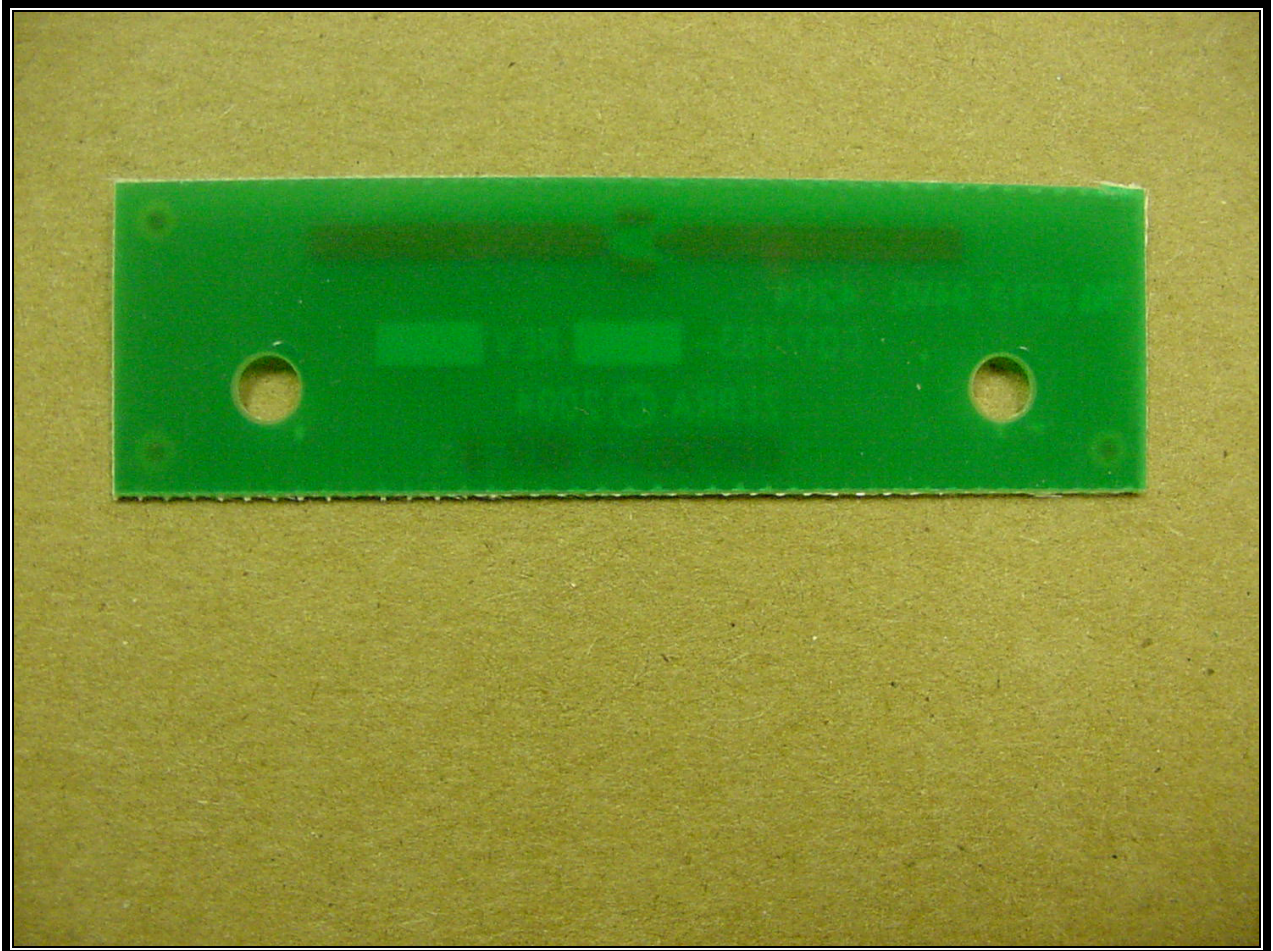
Client: Zebra Technologies
FCC: Part 15.247
IC: RSS-210
FCC ID: I28MD-ZLAN11B
Model: ZLAN11B



PHOTOGRAPH 19: FRONT OF CQ17383-1 USED IN QL-220

Rhein Tech Laboratories, Inc.
360 Herndon Parkway
Suite 1400
Herndon, VA 20170
<http://www.rheintech.com>

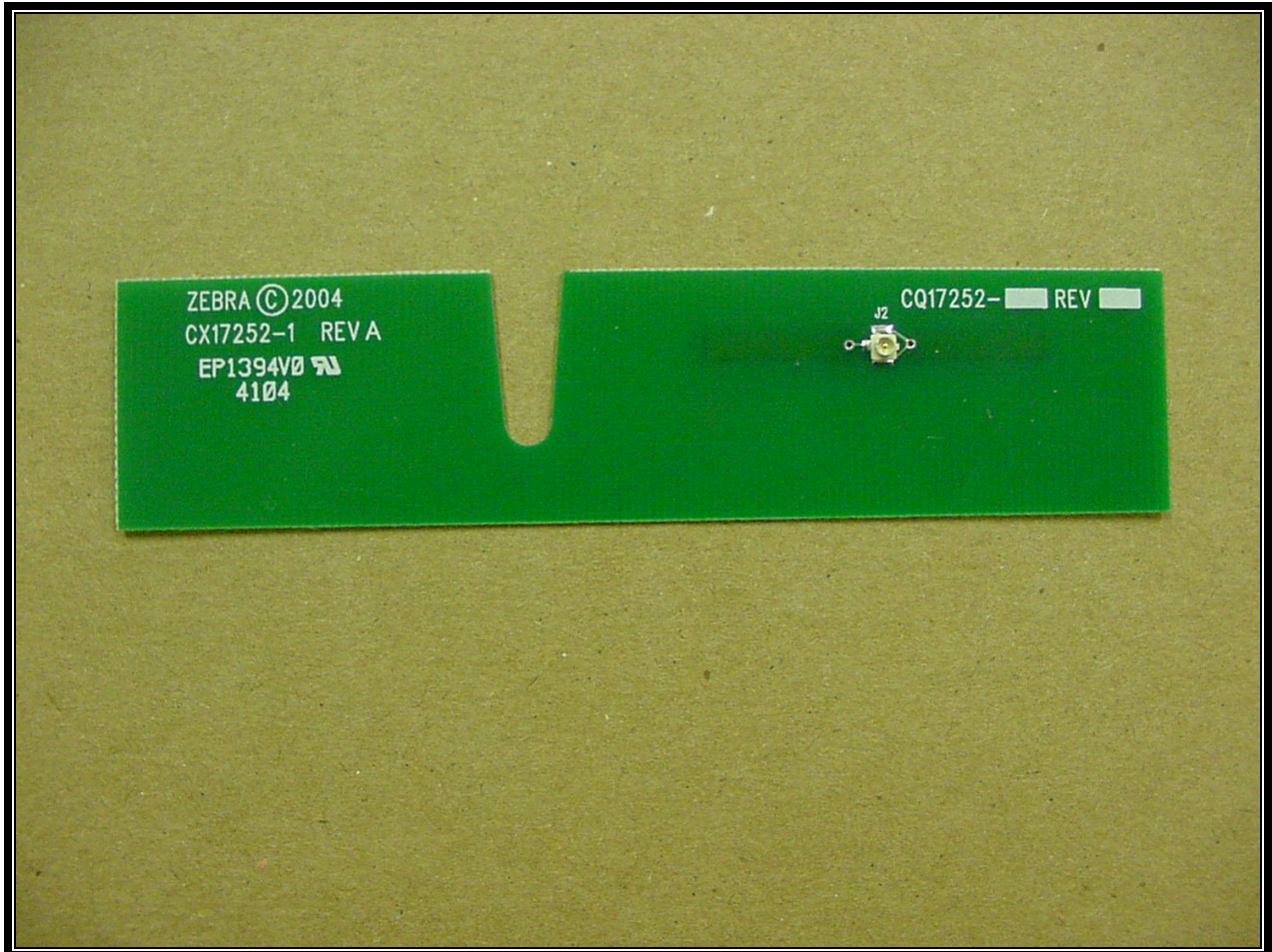
Client: Zebra Technologies
FCC: Part 15.247
IC: RSS-210
FCC ID: I28MD-ZLAN11B
Model: ZLAN11B



PHOTOGRAPH 20: BACK OF CQ17383-1 USED IN QL-220

Rhein Tech Laboratories, Inc.
360 Herndon Parkway
Suite 1400
Herndon, VA 20170
<http://www.rheintech.com>

Client: Zebra Technologies
FCC: Part 15.247
IC: RSS-210
FCC ID: I28MD-ZLAN11B
Model: ZLAN11B



PHOTOGRAPH 21: FRONT OF CQ17252-1 USED IN RW-420