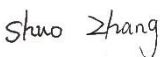
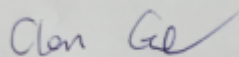


RF TEST REPORT



Report No.: FCC_IC_RF_SL16112301-ZBR-017R3-Colocation
Supersede Report No.:





Applicant	:	Zebra Technologies Corporation
Product Name	:	ZT610, ZT620 front panel
Model No.	:	UZ7211486030B
Test Standard	:	47 CFR 15.247 RSS 247 Iss 2: Feb 2017
Test Method	:	ANSI C63.10: 2013 RSS Gen Iss 4: Nov 2014 558074 D01 DTS Meas Guidance v04
FCC ID	:	UZ7211486030B I28-RFIDM6EMTT I28MD-ZBR7BTLE
IC ID	:	109AN-211486030B RFIDM6EMTT 3798B-ZBR7BTLE
Dates of test	:	05/22/2017 – 05/26/2017
Issue Date	:	06/17/2017
Test Result	:	<input checked="" type="checkbox"/> Pass <input type="checkbox"/> Fail
Equipment complied with the specification <input checked="" type="checkbox"/> [X]		
Equipment did not comply with the specification <input type="checkbox"/> []		

This Test Report is Issued Under the Authority of:	
	
Shuo Zhang	Chen Ge
Test Engineer	Engineer Reviewer

Issued By:
SIEMIC Laboratories
775 Montague Expressway, Milpitas, 95035 CA



775 Montague Expressway, Milpitas, CA 95035, USA • Phone: (+1) 408 526 1188 • Facsimile (+1) 408 526 1088

Visit us at: www.siemic.com; Follow us at:    

Laboratory Introduction

SIEMIC, headquartered in the heart of Silicon Valley, with superior facilities in US and Asia, is one of the leading independent testing and certification facilities providing customers with one-stop shop services for Compliance Testing and Global Certifications.



In addition to testing and certification, SIEMIC provides initial design reviews and compliance management throughout a project. Our extensive experience with China, Asia Pacific, North America, European, and International compliance requirements, assures the fastest, most cost effective way to attain regulatory compliance for the global markets.

Accreditations for Conformity Assessment

Country/Region	Accreditation Body	Scope
USA	FCC, A2LA	EMC, RF/Wireless, Telecom
Canada	IC, A2LA, NIST	EMC, RF/Wireless, Telecom
Taiwan	BSMI, NCC, NIST	EMC, RF, Telecom, Safety
Hong Kong	OFTA, NIST	RF/Wireless, Telecom
Australia	NATA, NIST	EMC, RF, Telecom, Safety
Korea	KCC/RRA, NIST	EMI, EMS, RF, Telecom, Safety
Japan	VCCI, JATE, TELEC, RFT	EMI, RF/Wireless, Telecom
Mexico	NOM, COFETEL, Caniety	Safety, EMC, RF/Wireless, Telecom
Europe	A2LA, NIST	EMC, RF, Telecom, Safety
Israel	MOC, NIST	EMC, RF, Telecom, Safety

Accreditations for Product Certifications

Country	Accreditation Body	Scope
USA	FCC TCB, NIST	EMC, RF, Telecom
Canada	IC FCB, NIST	EMC, RF, Telecom
Singapore	iDA, NIST	EMC, RF, Telecom
EU	NB	EMC & R&TTE Directive
Japan	MIC (RCB 208)	RF, Telecom
Hong Kong	OFTA (US002)	RF, Telecom

CONTENTS

1	REPORT REVISION HISTORY	4
2	EXECUTIVE SUMMARY	5
3	CUSTOMER INFORMATION	5
4	TEST SITE INFORMATION	5
5	MODIFICATION	5
6	EUT INFORMATION	6
6.1	EUT Description	6
6.2	Spec for Radio	6
6.3	EUT test modes/configuration Description.....	7
6.4	EUT Photos - External	8
6.5	EUT Photos – Internal.....	10
6.6	EUT Test Setup Photos	15
7	SUPPORTING EQUIPMENT/SOFTWARE AND CABLING DESCRIPTION.....	16
7.1	Supporting Equipment	16
7.2	Cabling Description	16
7.3	Test Software Description	16
8	TEST SUMMARY.....	17
9	MEASUREMENT UNCERTAINTY	18
9.1	Conducted Emissions	18
9.2	Radiated Emissions (30MHz to 1GHz).....	18
9.3	Radiated Emissions (1GHz to 40GHz).....	19
9.4	RF conducted measurement.....	19
10	MEASUREMENTS, EXAMINATION AND DERIVED RESULTS.....	20
10.1	Radiated Spurious Emissions below 1GHz.....	20
10.2	Radiated Spurious Emissions between 1GHz – 25GHz	22
ANNEX A. TEST INSTRUMENT		24
ANNEX B. SIEMIC ACCREDITATION		25

1 Report Revision History

Report No.	Report Version	Description	Issue Date
FCC_IC_RF_SL16112301-ZBR-017R3-Colocation	None	Original	06/17/2017

2 Executive Summary

The purpose of this test program was to demonstrate compliance of following product

Company: Zebra Technologies Corp.
Product: ZT610, ZT620 front panel
Model: UZ7211486030B

against the current Stipulated Standards. The specified model product stated above has demonstrated compliance with the Stipulated Standard listed on 1st page.

3 Customer information

Applicant Name	Zebra Technologies Corp.
Applicant Address	3 Overlook Point Lincolnshire, IL 60069, USA
Manufacturer Name	Zebra Technologies Corp.
Manufacturer Address	3 Overlook Point Lincolnshire, IL 60069, USA

4 Test site information

Lab performing tests	SIEMIC Laboratories
Lab Address	775 Montague Expressway, Milpitas, CA 95035
FCC Test Site No.	881796
IC Test Site No.	4842D-2
VCCI Test Site No.	A0133

5 Modification

Index	Item	Description	Note
-	-	-	-

6 EUT Information

6.1 EUT Description

Product Name	:	ZT610, ZT620 front panel
Model No.	:	UZ7211486030B
Trade Name	:	Zebra Technologies Corp.
Serial No.	:	N/A
Input Power	:	100-240VAC,50/60Hz
Power Adapter Manu/Model	:	N/A
Power Adapter SN	:	N/A
Product Hardware version	:	N/A
Product Software version	:	N/A
Radio Hardware version	:	N/A
Radio Software version	:	N/A
Date of EUT received	:	05/20/2017
Equipment Class/ Category	:	DTS
Port/Connectors	:	None

6.2 Spec for Radio

Radio Type	Bluetooth
Operating Frequency	2402MHz-2480MHz
Modulation	GFSK (LE)
Channel Spacing	2MHz (LE)
Antenna Type	PiFA antenna
Antenna Gain	-0.55 dBi
Antenna Connector Type	U.FL connector

Radio Type	802.11b	802.11g	802.11a	802.11n-20M
Operating Frequency	2412-2462MHz	2412-2462MHz	5180-5240MHz 5260-5320MHz 5500-5700MHz 5725-5825MHz	2412-2462MHz 5180-5240MHz 5240-5320MHz 5500-5700MHz 5725-5825MHz
Modulation	DSSS (CCK, DQPSK, DBPSK)	OFDM-CCK (BPSK, QPSK, 16QAM, 64QAM)	OFDM (BPSK, QPSK, 16QAM, 64QAM)	OFDM (BPSK, QPSK, 16QAM, 64QAM)
Channel Spacing	5MHz	5MHz	20MHz	5MHz(2.4GHz), 20MHz (5GHz)
Number of Channels	11	11	22	11(2.4GHz) 22 (5GHz)
Antenna Type	PiFA Antenna			
Antenna Gain (Peak)	2.25 dBi (for 2.4GHz) 3.7 dBi (5GHz)			
Antenna Connector Type	U.FL connector			

Type	Channel No.	Frequency (MHz)	Power Setting
Bluetooth(BLE) 2402-2480MHz	0	2402	Default
	19	2440	Default
	39	2480	Default

6.3 EUT test modes/configuration Description

Mode	Note
Bluetooth	BLE (GFSK)

6.4 EUT Photos - External



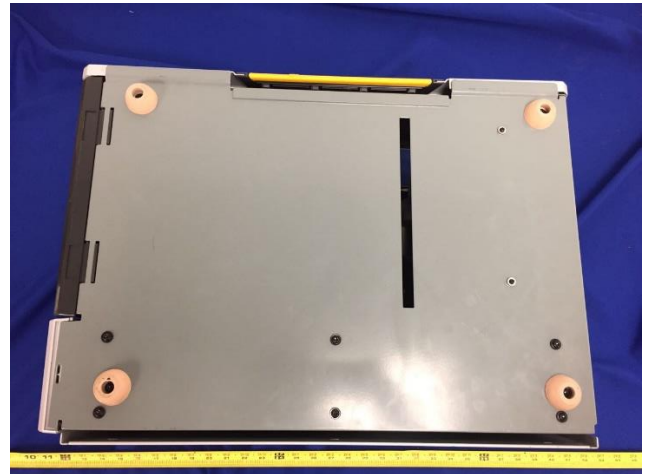
EUT - Front View



EUT - Rear View



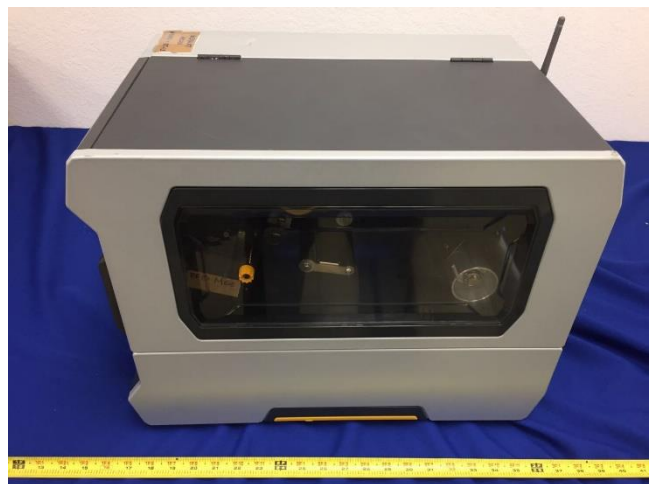
EUT - Top View



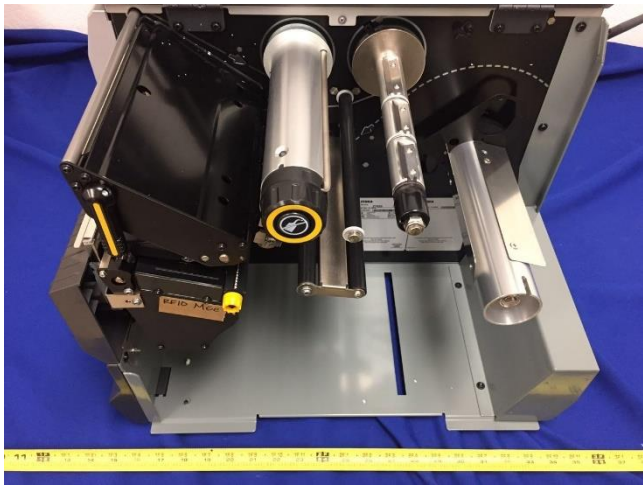
EUT - Bottom View



EUT - Left Side View



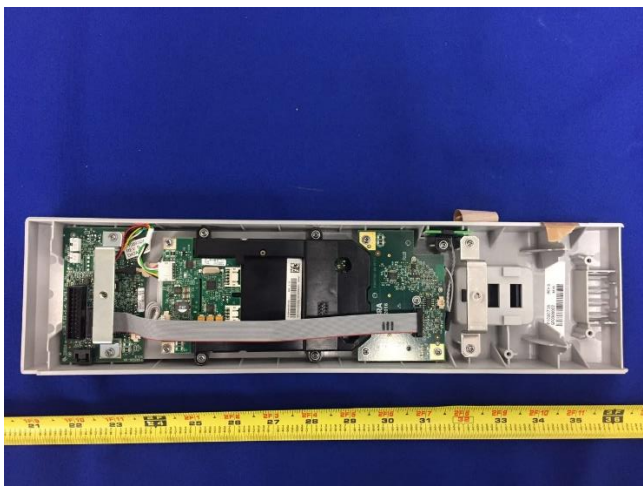
EUT - Right Side View



Open Case View



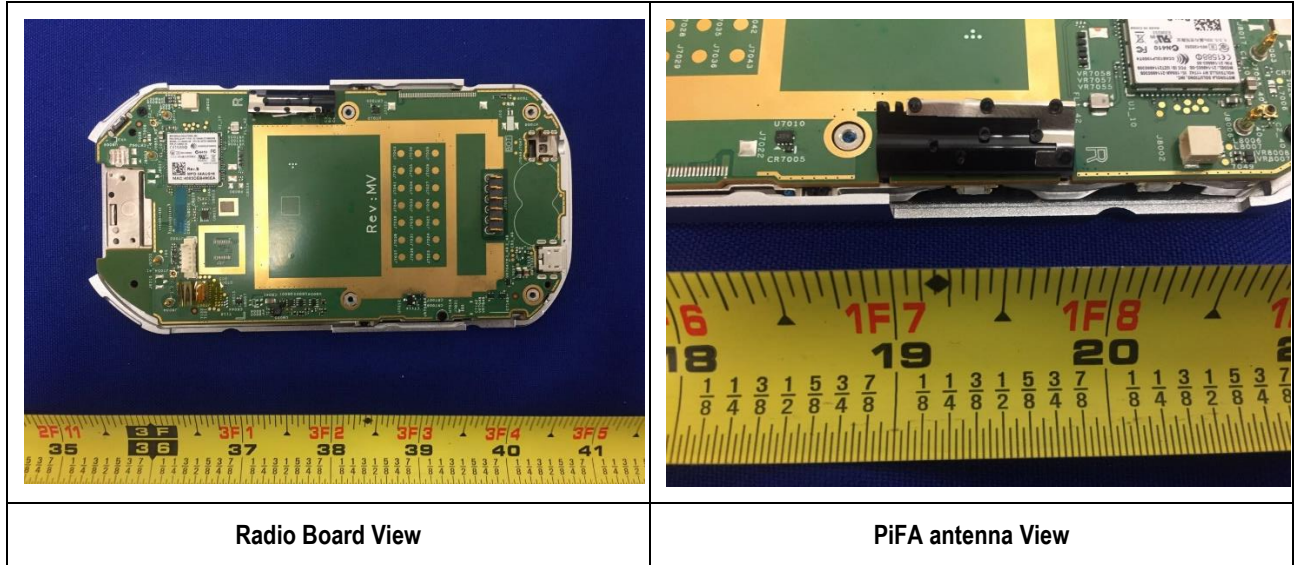
MC40 Panel Front



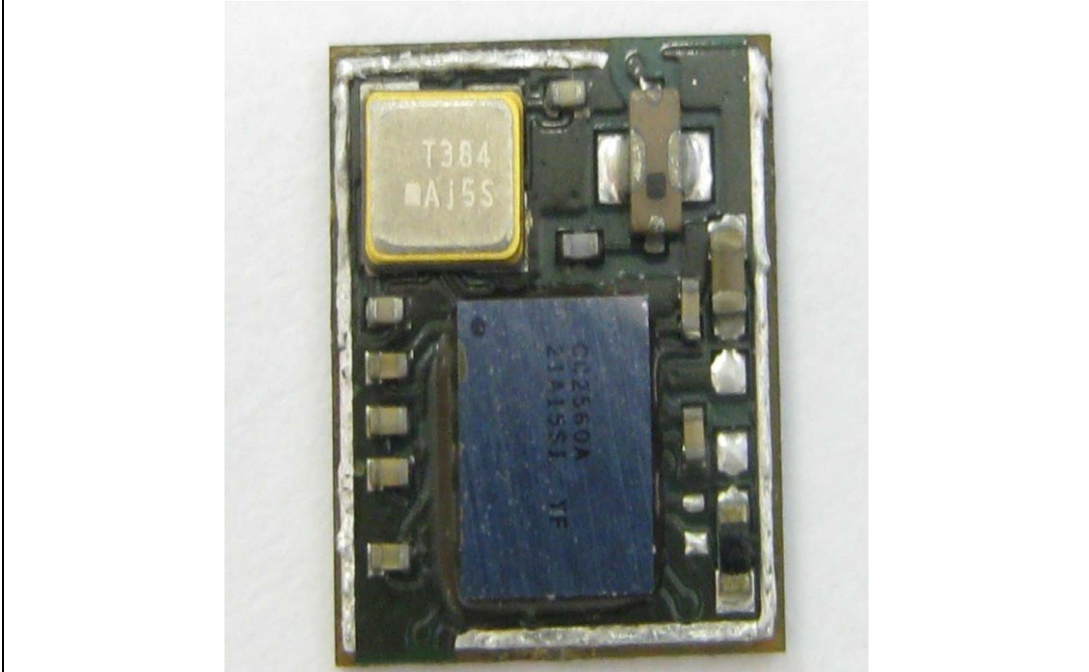
MC40 Panel Front

6.5 EUT Photos – Internal

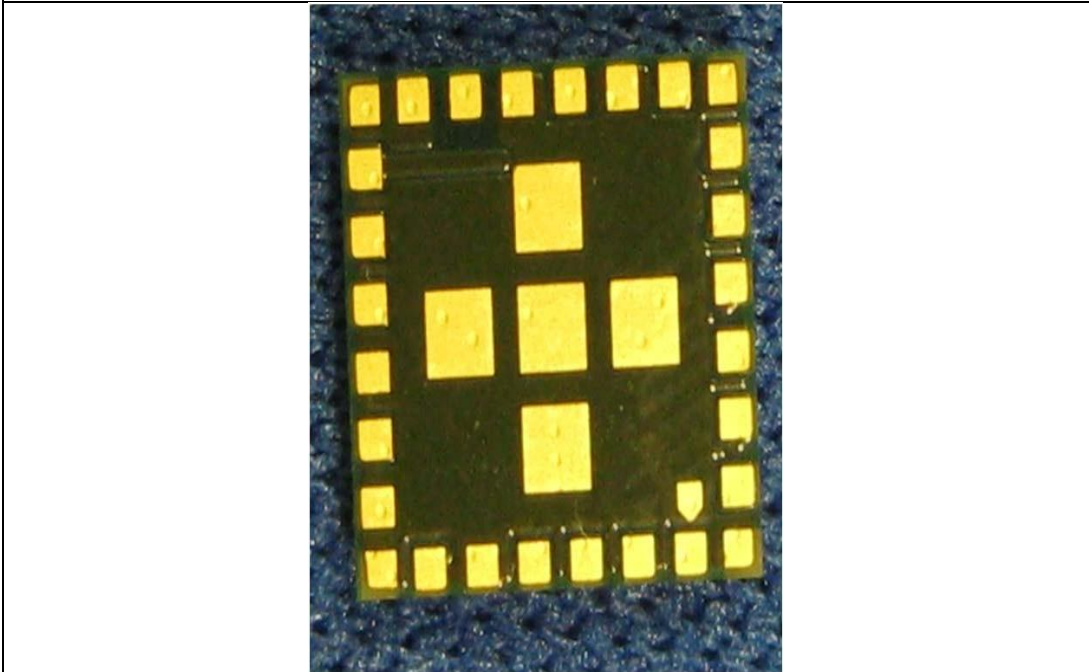
UZ7211486030B



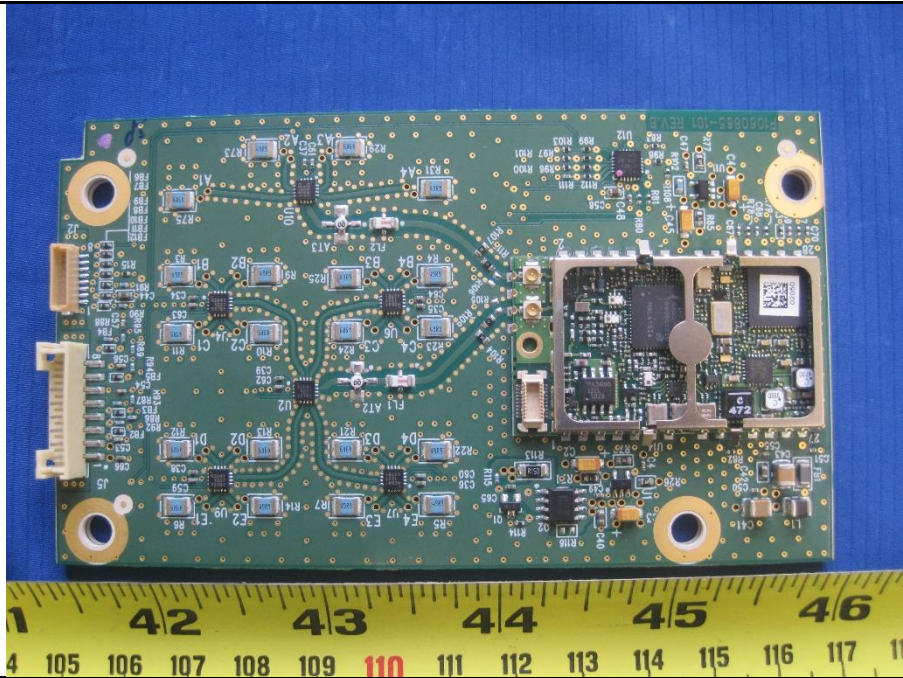
I28-RFIDM6EMTT & I28MD-ZBR7BTLE



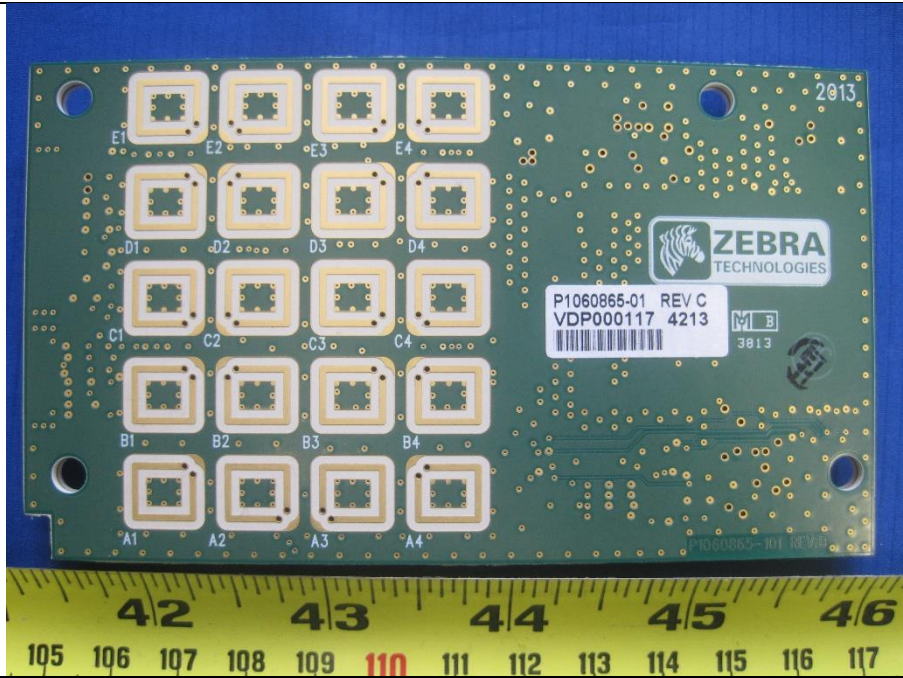
BT module Top View



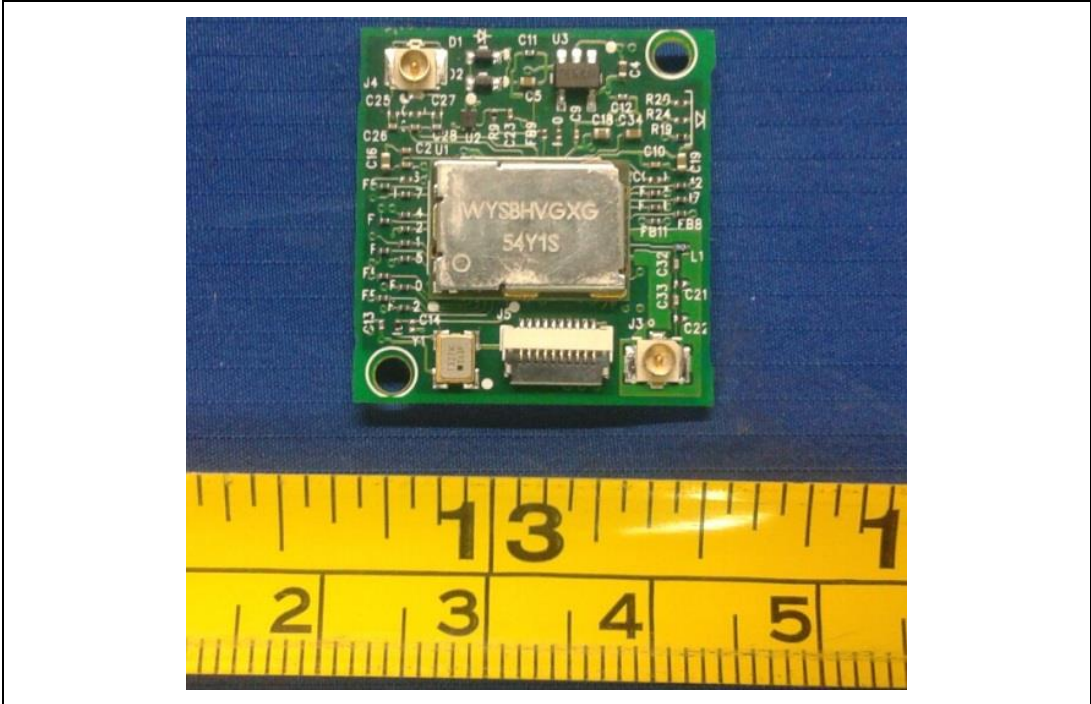
BT module Bottom View



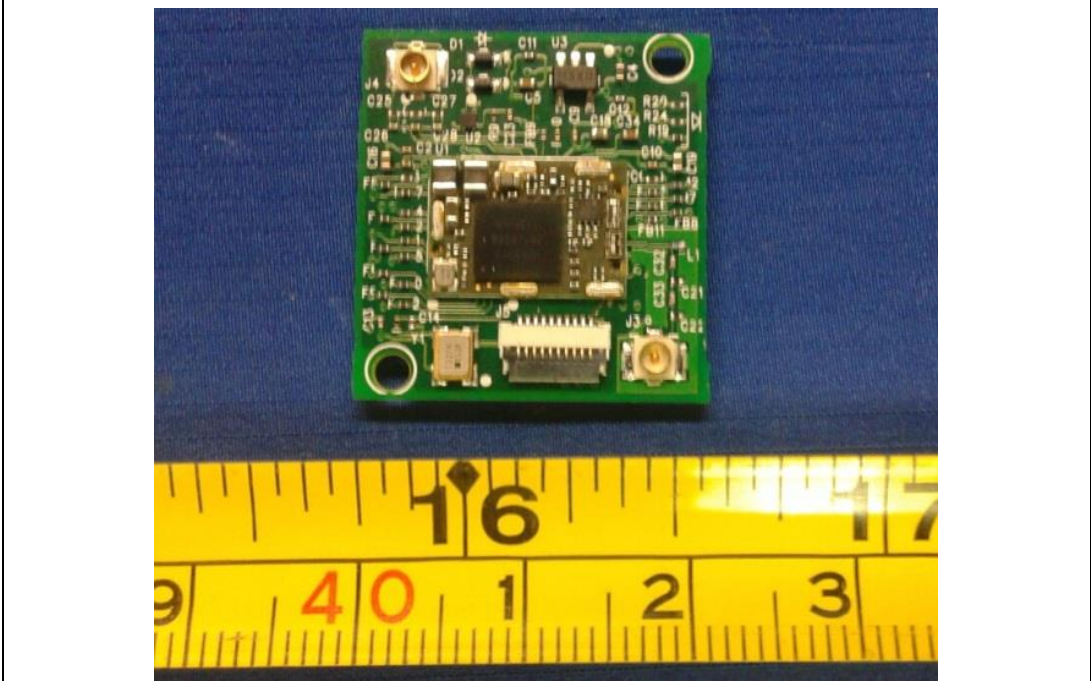
RFID module Top View



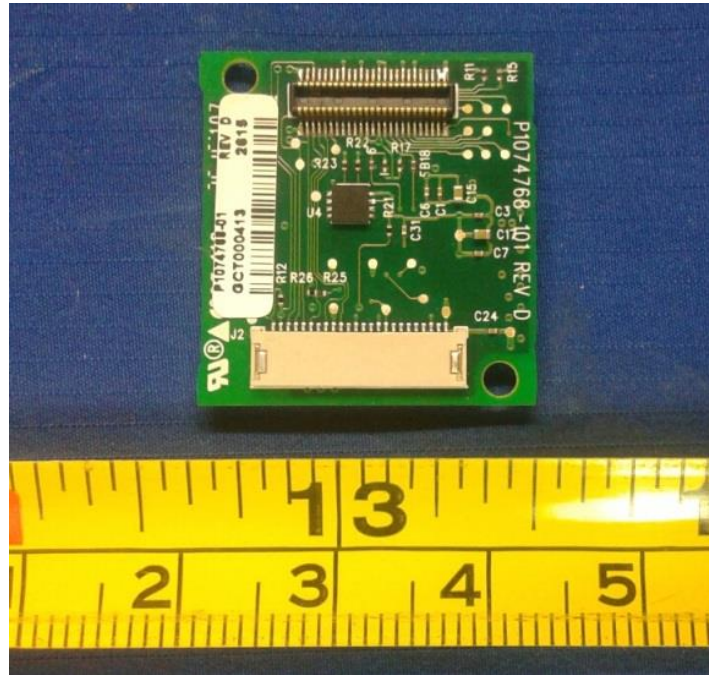
RFID module Bottom View



EUT Radio with Shielding Top View



EUT Radio without Shielding Top View



EUT Radio Bottom View

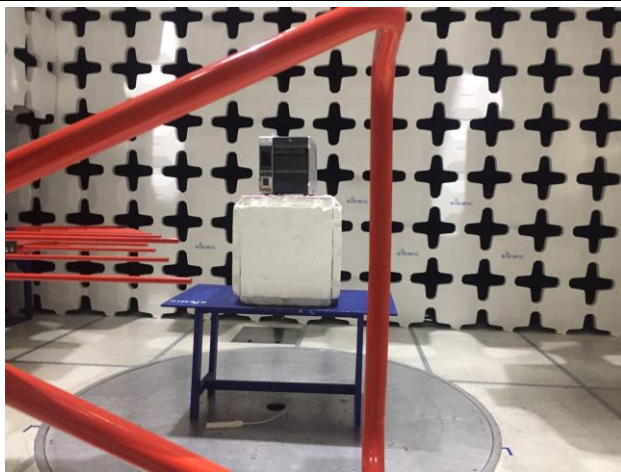
6.6 EUT Test Setup Photos



AC Line Conducted Emissions – Front View



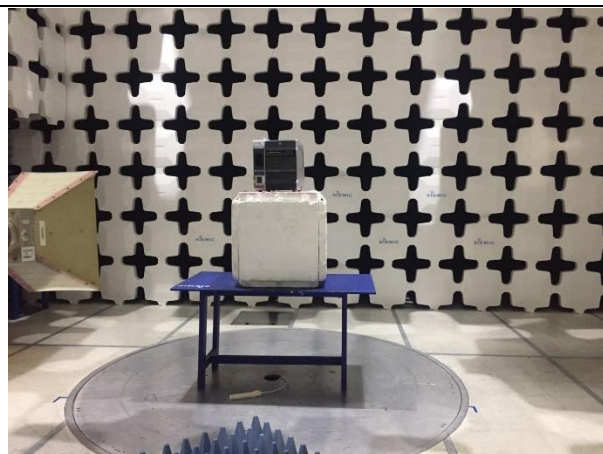
AC Line Conducted Emissions – Rear View



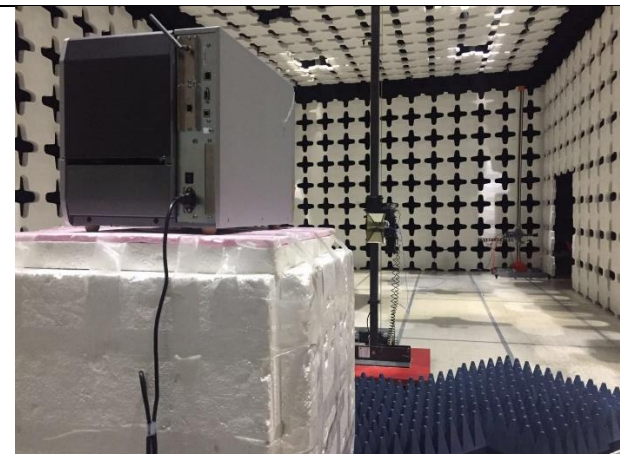
Radiated Emissions (<1GHz) – Front View



Radiated Emissions (<1GHz) – Rear View



Radiated Emissions (>1GHz) – Front View



Radiated Emissions (>1GHz) – Rear View

7 Supporting Equipment/Software and cabling Description

7.1 Supporting Equipment

Item	Supporting Equipment Description	Model	Serial Number	Manufacturer	Note
1	Laptop	N/A	3YZQ162	Dell	-

7.2 Cabling Description

Name	Connection Start		Connection Stop		Length / shielding Info		Note
	From	I/O Port	To	I/O Port	Length (m)	Shielding	
N/A	N/A	N/A	N/A	N/A	N/A	N/A	N/A

7.3 Test Software Description

Test Item	Software	Description
RF Testing	Andriod Panel	Set the EUT to transmit continuously in diferent test mode

8 Test Summary

Test Item	Test standard		Test Method/Procedure		Pass / Fail
Restricted Band of Operation	FCC	15.205	FCC	ANSI C63.10:2013 558074 D01 DTS Meas Guidance v04	<input checked="" type="checkbox"/> Pass
	IC	RSS Gen 8.10	IC		<input type="checkbox"/> N/A
AC Conducted Emissions	FCC	15.207(a)	FCC	ANSI C63.10:2013	<input type="checkbox"/> Pass
	IC	RSS Gen 8.8	IC	RSS Gen Issue 4: 2014	<input checked="" type="checkbox"/> N/A

DTS Band Requirement

Test Item	Test standard		Test Method/Procedure		Pass / Fail
99% Occupied Bandwidth	-	-	-	-	<input type="checkbox"/> Pass
	IC	RSS Gen 6.6	IC	RSS Gen Issue 4: 2014 -	<input checked="" type="checkbox"/> N/A
6dB Bandwidth	FCC	15.247(a)(2)	FCC	558074 D01 DTS Meas Guidance v04	<input type="checkbox"/> Pass
	IC	RSS247 (5.2.1)	IC		<input checked="" type="checkbox"/> N/A
Band Edge and Radiated Spurious Emissions	FCC	15.247(d)	FCC	ANSI C63.10:2013 558074 D01 DTS Meas Guidance v04	<input checked="" type="checkbox"/> Pass
	IC	RSS247 (5.5)	IC		<input type="checkbox"/> N/A
Output Power	FCC	15.247(b)	FCC	558074 D01 DTS Meas Guidance v04	<input type="checkbox"/> Pass
	IC	RSS247 (5.4.4)	IC		<input checked="" type="checkbox"/> N/A
Receiver Spurious Emissions	IC	RSS Gen (4.8)	IC	RSS Gen Issue 4: 2014	<input type="checkbox"/> Pass <input checked="" type="checkbox"/> N/A
Antenna Gain > 6 dBi	FCC	15.247(e)	FCC	-	<input type="checkbox"/> Pass
	IC	-	IC	-	<input checked="" type="checkbox"/> N/A
Power Spectral Density	FCC	15.247(e)	FCC	558074 D01 DTS Meas Guidance v04	<input type="checkbox"/> Pass
	IC	RSS247 (5.2.2)	IC		<input checked="" type="checkbox"/> N/A
RF Exposure requirement	FCC	15.247(i)	FCC	-	<input type="checkbox"/> Pass
	IC	RSS Gen(5.5)	IC	RSS Gen Issue 4: 2014	<input checked="" type="checkbox"/> N/A
Remark	<ol style="list-style-type: none"> All measurement uncertainties do not take into consideration for all presented test results. The applicant shall ensure frequency stability by showing that an emission is maintained within the band of operation under all normal operating conditions as specified in the user's manual. The device is operating at near 98% duty cycle. 				
Note	Only Radiated Spurious Emission was tested. Please refer to report no. : FCC_IC_RF_SL16112301-ZBR-017R3 for rest of the items.				

9 Measurement Uncertainty

9.1 Conducted Emissions

The test is to measure the conducted emissions to the mains port of the EUT.

Some error sources that can contribute to the total uncertainty:

- Uncertainty of the receiver
- Uncertainty of the LISN
- Uncertainty of cables
- Uncertainty due to the mismatches
- Etc, see the below table for details

Source of Uncertainty	Value (dB)	Probability Distribution	Division	Sensitivity Coefficient	Expanded Uncertainty
Receiver Reading	0.12	Rectangular	1.732	1	0.069284
Cable Insertion Loss	0.21	Normal	2	1	0.105
Filter Insertion Loss	0.25	Normal	2	1	0.125
LISN Insertion Loss	0.40	Normal	2	1	0.20
Receiver CW accuracy	0.5	Rectangular	1.732	1	0.2886836
Pulse Amplitude Response	1.5	Rectangular	1.732	1	0.86605081
PRF Response	1.5	Rectangular	1.732	1	0.86605081
Mismatch LISN - Receiver	0.25	U-Shape	1.414	1	0.1768033
LISN Impedance	2.5	Triangular	2.449	1	1.0208248
Combined Standard Uncertainty					1.928133
Expanded Uncertainty (K=2)					3.856266

The total derived measurement uncertainty is +/- 3.86 dB.

9.2 Radiated Emissions (30MHz to 1GHz)

The test is to measure the radiated emissions of the EUT.

Some error sources that can contribute to the total uncertainty:

- Uncertainty of the receiver
- Uncertainty of the antenna
- Uncertainty of cables
- Uncertainty due to the mismatches
- NSA Calibration
- Etc., details see the below table

Source of Uncertainty	Value (dB)	Probability Distribution	Division	Sensitivity Coefficient	Expanded Uncertainty
Receiver Reading	0.12	Rectangular	1.732	1	0.069284
Cable Insertion Loss	0.21	Normal	2	1	0.105
Filter Insertion Loss	0.25	Normal	2	1	0.125
Antenna Factor	0.65	Normal	2	1	0.325
Receiver CW accuracy	0.5	Rectangular	1.732	1	0.2886836
Pulse Amplitude Response	1.5	Rectangular	1.732	1	0.86605081
PRF Response	1.5	Rectangular	1.732	1	0.86605081
Mismatch Filter - Receiver	0.25	U-Shape	1.414	1	0.1768033
NSA Calibration	4.0	U-Shape	1.414	1	2.8288543
Combined Standard Uncertainty					3.0059131
Expanded Uncertainty (K=2)					6.0118262

The total derived measurement uncertainty is +/- 6.00 dB.

9.3 Radiated Emissions (1GHz to 40GHz)

The test is to measure the radiated emissions of the EUT.

Some error sources that can contribute to the total uncertainty:

- Uncertainty of the receiver
- Uncertainty of the antenna
- Uncertainty of cables
- Uncertainty due to the mismatches
- VSWR Calibration
- Etc., details see the below table

Source of Uncertainty	Value (dB)	Probability Distribution	Division	Sensitivity Coefficient	Expanded Uncertainty
Receiver Reading	0.12	Rectangular	1.732	1	0.0692840
Cable Insertion Loss	0.21	Normal	2	1	0.1050000
Filter Insertion Loss	0.25	Normal	2	1	0.1250000
Antenna Factor	0.65	Normal	2	1	0.3250000
Receiver CW accuracy	0.5	Rectangular	1.732	1	0.2886836
Pulse Amplitude Response	1.5	Rectangular	1.732	1	0.8660508
PRF Response	1.5	Rectangular	1.732	1	0.8660508
Mismatch Filter - Receiver	0.25	U-Shape	1.414	1	0.1768033
VSWR Calibration	2.0	U-Shape	1.414	1	1.4144272
Combined Standard Uncertainty					4.2363
Expanded Uncertainty (K=2)					8.4726

The total derived measurement uncertainty is +/- 8.47 dB.

9.4 RF conducted measurement

The test is to measure the RF output power from the EUT.

Some error sources that can contribute to the total uncertainty:

- Uncertainty of the Reference Level Uncertainty
- Uncertainty of variable attenuators
- Uncertainty of cables
- Uncertainty due to the mismatches

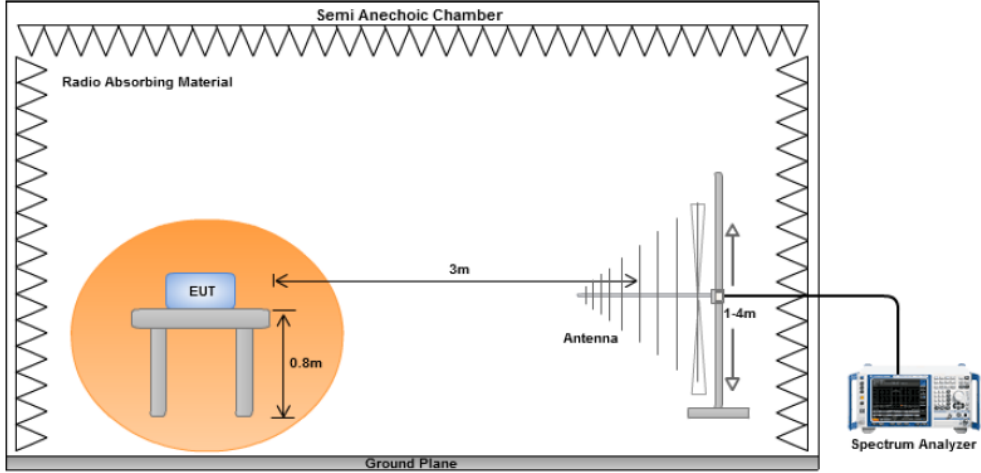
Source of Uncertainty	Value (dB)	Probability Distribution	Division	Sensitivity Coefficient	Expanded Uncertainty
Reference Level	0.12	Rectangular	1.732	1	0.069284
Cable Insertion Loss	0.21	Normal	2	1	0.105
Attenuator	0.25	Normal	2	1	0.125
Mismatch	0.25	U-Shape	1.414	1	0.1768033
Combined Standard Uncertainty					0.476087
Expanded Uncertainty (K=2)					0.952174

The total derived measurement uncertainty is +/- 0.95 dB.

10 Measurements, Examination and Derived Results

10.1 Radiated Spurious Emissions below 1GHz

Requirement(s):

Spec	Item	Requirement	Applicable										
47CFR§15.247(d) RSS247 (5.5)	a)	<p>Except higher limit as specified elsewhere in other section, the emissions from the low-power radio-frequency devices shall not exceed the field strength levels specified in the following table and the level of any unwanted emissions shall not exceed the level of the fundamental emission. The tighter limit applies at the band edges</p> <table border="1"> <thead> <tr> <th>Frequency range (MHz)</th> <th>Field Strength (uV/m)</th> </tr> </thead> <tbody> <tr> <td>30 – 88</td> <td>100</td> </tr> <tr> <td>88 – 216</td> <td>150</td> </tr> <tr> <td>216 960</td> <td>200</td> </tr> <tr> <td>Above 960</td> <td>500</td> </tr> </tbody> </table>	Frequency range (MHz)	Field Strength (uV/m)	30 – 88	100	88 – 216	150	216 960	200	Above 960	500	☒
Frequency range (MHz)	Field Strength (uV/m)												
30 – 88	100												
88 – 216	150												
216 960	200												
Above 960	500												
Test Setup													
Procedure		<ol style="list-style-type: none"> The EUT was switched on and allowed to warm up to its normal operating condition. The test was carried out at the selected frequency points obtained from the EUT characterisation. Maximization of the emissions, was carried out by rotating the EUT, changing the antenna polarization, and adjusting the antenna height in the following manner: <ol style="list-style-type: none"> Vertical or horizontal polarisation (whichever gave the higher emission level over a full rotation of the EUT) was chosen. The EUT was then rotated to the direction that gave the maximum emission. Finally, the antenna height was adjusted to the height that gave the maximum emission. A Quasi-peak measurement was then made for that frequency point. Steps 2 and 3 were repeated for the next frequency point, until all selected frequency points were measured. 											
Remark		The EUT was scanned up to 1GHz. Both horizontal and vertical polarities were investigated. The results show only the worst case.											
Result		☒ Pass ☐ Fail											

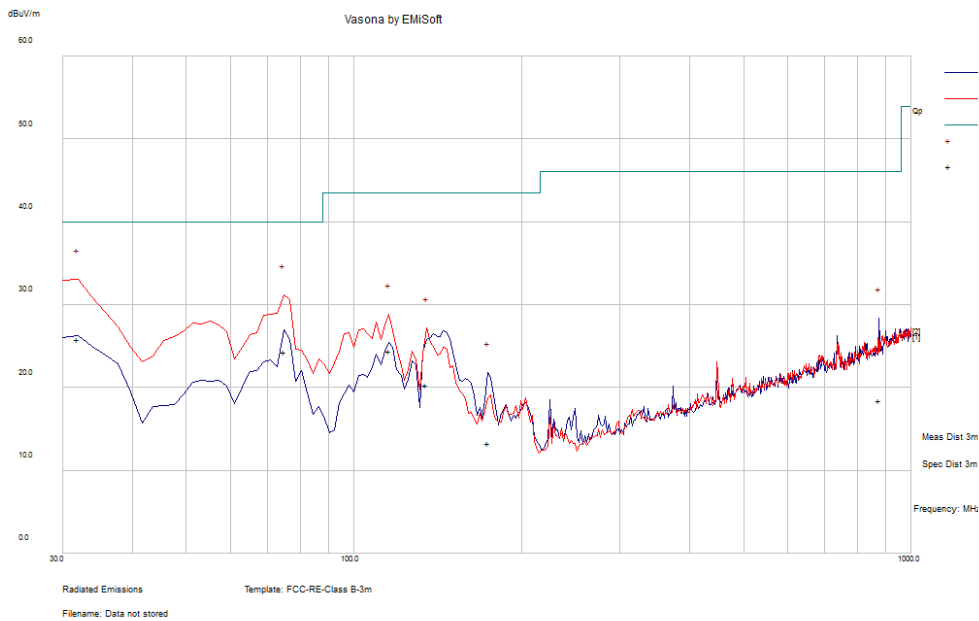
Test Data ☒ Yes (See below) ☐ N/A

Test Plot ☒ Yes (See below) ☐ N/A

Test was done by Shuo Zhang at 10m chamber.

Radiated Emission Test Results (Below 1GHz)

Test specification	below 1GHz			Result	Pass
Environmental Conditions:	Temp (°C):	22			
	Humidity (%)	47.5			
	Atmospheric (mbar):	1020			
Mains Power:	120VAC, 60Hz				
Tested by:	Shuo Zhang				
Test Date:	02/15/2017				
Remarks:	Three modules transmit simultaneously				



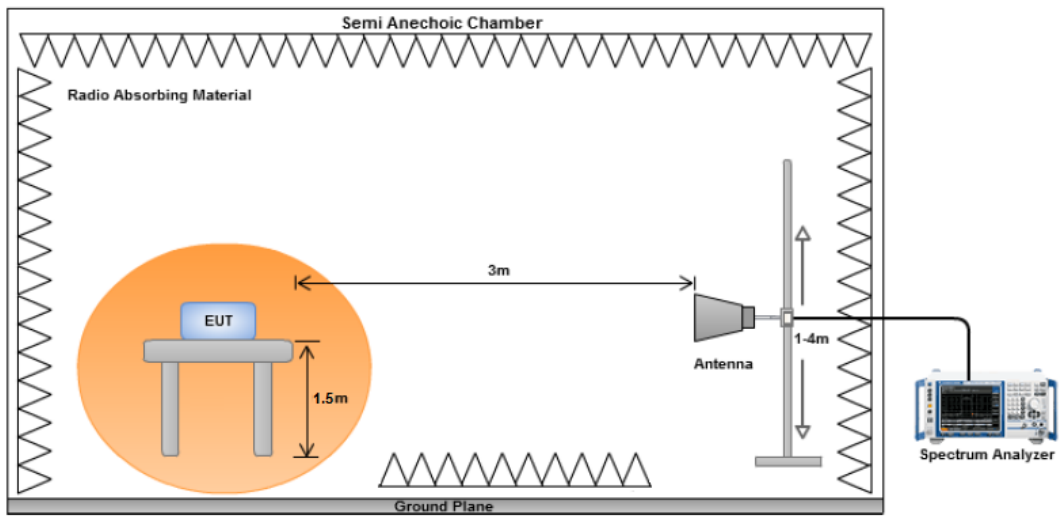
Quasi Max Measurement

Frequency MHz	Raw dBuV	Cable Loss	AF dB	Level dBuV/m	Measurement Type	Pol	Hgt cm	Azt Deg	Limit dBuV/m	Margin dB	Pass /Fail
31.85	41.1	0.82	-16.09	25.82	Quasi Max	V	104	148	40	-14.18	Pass
74.94	53.25	1.37	-30.35	24.27	Quasi Max	V	122	220	40	-15.73	Pass
115.58	47.83	1.76	-25.13	24.47	Quasi Max	V	110	175	43.52	-19.05	Pass
134.85	43.29	1.92	-24.88	20.32	Quasi Max	V	133	213	43.52	-23.2	Pass
875.37	29.55	5.33	-16.39	18.49	Quasi Max	H	197	344	46.02	-27.53	Pass
173.75	38.4	2.24	-27.37	13.26	Quasi Max	H	129	67	43.52	-30.26	Pass

Note: Both horizontal and vertical polarities were investigated. The results above show only the worst case

10.2 Radiated Spurious Emissions between 1GHz – 25GHz

Requirement(s):

Spec	Item	Requirement	Applicable
47CFR§15.247(d), RSS247(A8.5)	a)	For non-restricted band, In any 100 kHz bandwidth outside the frequency band in which the spread spectrum or digitally modulated intentional radiator is operating, the radio frequency power that is produced by the intentional radiator shall be at least 20 dB or 30dB below that in the 100 kHz bandwidth within the band that contains the highest level of the desired power, determined by the measurement method on output power to be used. Attenuation below the general limits specified in § 15.209(a) is not required <input type="checkbox"/> 20 dB down <input checked="" type="checkbox"/> 30 dB down	<input checked="" type="checkbox"/>
	b)	or restricted band, emission must also comply with the radiated emission limits specified in 15.209	<input checked="" type="checkbox"/>
Test Setup			
Procedure	<ol style="list-style-type: none"> The EUT was switched on and allowed to warm up to its normal operating condition. The test was carried out at the selected frequency points obtained from the EUT characterisation. Maximization of the emissions, was carried out by rotating the EUT, changing the antenna polarization, and adjusting the antenna height in the following manner: <ol style="list-style-type: none"> Vertical or horizontal polarisation (whichever gave the higher emission level over a full rotation of the EUT) was chosen. The EUT was then rotated to the direction that gave the maximum emission. Finally, the antenna height was adjusted to the height that gave the maximum emission. An average measurement was then made for that frequency point. Steps 2 and 3 were repeated for the next frequency point, until all selected frequency points were measured. 		
Remark	The EUT was scanned up to 26GHz. Both horizontal and vertical polarities were investigated. The results show only the worst case.		
Result	<input checked="" type="checkbox"/> Pass <input type="checkbox"/> Fail		

Test Data Yes (See below) N/A

Test Plot Yes (See below) N/A

Test was done by Shuo Zhang at 10m chamber.

Radiated Emission Test Results (Above 1GHz)

















LMA UZ7211486030B Module, FMA ZBR7BTLE Module and FMA UHF RFIDM6EMTT transmit simultaneously








Frequency (MHz)	Raw (dBuV)	Cable Loss (dB)	AF (dB)	Level (dBuV/m)	Measurement Type	Pol (V/H)	Hgt (cm)	Azt (Deg)	Limit (dBuV/m)	Margin (dB)	Pass /Fail
4261.74	37.12	9.15	14.62	60.89	Peak Max	H	197	75	74	-13.11	Pass
6130.92	36.93	10.64	14.27	61.85	Peak Max	V	166	0	74	-12.15	Pass
2124.31	39.8	4.38	14.61	58.79	Peak Max	V	149	350	74	-15.21	Pass
4261.74	25.49	9.15	14.62	49.26	Average Max	H	197	75	54	-4.74	Pass
6130.92	24.55	10.64	14.27	49.47	Average Max	V	166	0	54	-4.53	Pass
2124.31	27.89	4.38	14.61	46.88	Average Max	V	149	350	54	-7.12	Pass

Annex A. TEST INSTRUMENT

Instrument	Model	Serial #	Cal Date	Cal Cycle	Cal Due	In use
Conducted Emissions						
R & S Receiver	ESIB 40	100179	06/08/2017	1 Year	06/08/2018	<input checked="" type="checkbox"/>
CHASE LISN	MN2050B	1018	08/16/2016	1 Year	08/16/2017	<input checked="" type="checkbox"/>
Radiated Emissions						
R & S Receiver	ESIB 40	1018	06/08/2017	1 Year	06/08/2018	<input checked="" type="checkbox"/>
Bi-Log antenna (30MHz~2GHz)	JB1	A030702	01/13/2017	1 Year	01/13/2018	<input checked="" type="checkbox"/>
Horn Antenna (1GHz~26GHz)	3115	100059	08/11/2016	1 Year	08/11/2017	<input checked="" type="checkbox"/>
Pre-Amplifier (1-26.5GHz)	8449B	3008A00715	03/30/2017	1 Year	03/30/2018	<input checked="" type="checkbox"/>
Preamplifier (100KHz-7GHz)	LPA-6-30	11140711	02/09/2017	1 Year	02/09/2018	<input checked="" type="checkbox"/>
10 Meters SAC	10M	N/A	07/06/2016	1 Year	07/06/2017	<input checked="" type="checkbox"/>
RF Conducted Measurement						
Spectrum Analyzer	N9010A	10SL0219	11/16/2016	1 Year	11/16/2017	<input checked="" type="checkbox"/>

Annex B. SIEMIC Accreditation

Accreditations	Document	Scope / Remark
ISO 17025 (A2LA)		Please see the documents for the detailed scope
ISO Guide 65 (A2LA)		Please see the documents for the detailed scope
TCB Designation		A1 , A2 , A3 , A4 , B1 , B2 , B3 , B4 , C
FCC DoC Accreditation		FCC Declaration of Conformity Accreditation
FCC Site Registration		3 meter site
FCC Site Registration		10 meter site
IC Site Registration		3 meter site
IC Site Registration		10 meter site
EU NB		Radio & Telecommunications Terminal Equipment: EN45001 – EN ISO/IEC 17025
		Electromagnetic Compatibility: EN45001 – EN ISO/IEC 17025
Singapore iDA CB(Certification Body)	 	Phase I , Phase II
Vietnam MIC CAB Accreditation		Please see the document for the detailed scope
Hong Kong OFCA		(Phase II) OFCA Foreign Certification Body for Radio and Telecom
		(Phase I) Conformity Assessment Body for Radio and Telecom
Industry Canada CAB		Radio: Scope A – All Radio Standard Specification in Category I
		Telecom: CS-03 Part I, II, V, VI, VII, VIII

Japan Recognized Certification Body Designation		<p>Radio: A1. Terminal equipment for purpose of calling</p> <p>Telecom: B1. Specified radio equipment specified in Article 38-2, Paragraph 1, Item 1 of the Radio Law</p>
Korea CAB Accreditation		<p>EMI: KCC Notice 2008-39, RRL Notice 2008-3: CA Procedures for EMI KN22: Test Method for EMI</p> <p>EMS: KCC Notice 2008-38, RRL Notice 2008-4: CA Procedures for EMS KN24, KN61000-4-2, -4-3, -4-4, -4-5, -4-6, -4-8, -4-11: Test Method for EMS</p>
		<p>Radio: RRL Notice 2008-26, RRL Notice 2008-2, RRL Notice 2008-10, RRL Notice 2007-49, RRL Notice 2007-20, RRL Notice 2007-21, RRL Notice 2007-80, RRL Notice 2004-68</p> <p>Telecom: President Notice 20664, RRL Notice 2007-30, RRL Notice 2008-7 with attachments 1, 3, 5, 6; President Notice 20664, RRL Notice 2008-7 with attachment 4</p>
Taiwan NCC CAB Recognition		LP0002, PSTN01, ADSL01, ID0002, IS6100, CNS14336, PLMN07, PLMN01, PLMN08
Taiwan BSMI CAB Recognition		CNS 13438
Japan VCCI		<p>R-3083: Radiation 3 meter site</p> <p>C-3421: Main Ports Conducted Interference Measurement</p> <p>T-1597: Telecommunication Ports Conducted Interference Measurement</p>
Australia CAB Recognition		<p>EMC: AS/NZS CISPR 11, AS/NZS CISPR 14.1, AS/NZS CISPR22, AS/NZS 61000.6.3, AS/NZS 61000.6.4</p>
		<p>Radio communications: AS/NZS 4281, AS/NZS 4268, AS/NZS 4280.1, AS/NZS 4280.2, AS/NZS 4295, AS/NZS 4582, AS/NZS 4583, AS/NZS 4769.1, AS/NZS 4769.2, AS/NZS 4770, AS/NZS 4771</p>
		<p>Telecommunications: AS/ACIF S002:05, AS/ACIF S003:06, AS/ACIF S004:06, AS/ACIF S006:01, AS/ACIF S016:01, AS/ACIF S031:01, AS/ACIF S038:01, AS/ACIF S040:01, AS/ACIF S041:05, AS/ACIF S043.2:06, AS/ACIF S60950.1</p>
Australia NATA Recognition		AS/ACIF S002, AS/ACIF S003, AS/ACIF S004, AS/ACIF S006, AS/ACIF S016, AS/ACIF S031, AS/ACIF S038, AS/ACIF S040, AS/ACIF S041, AS/ACIF S043.2