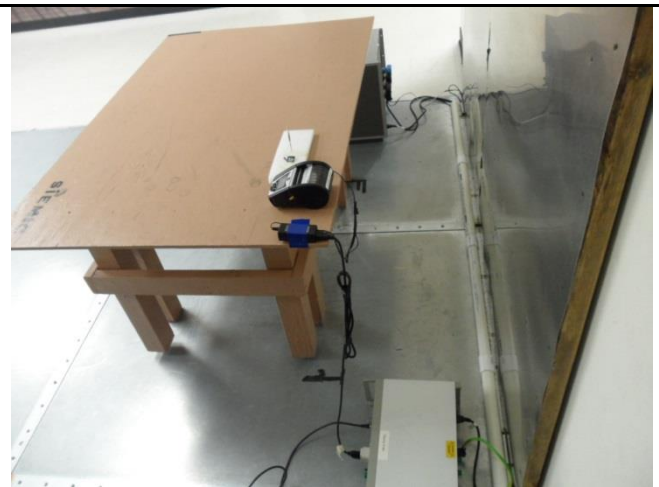
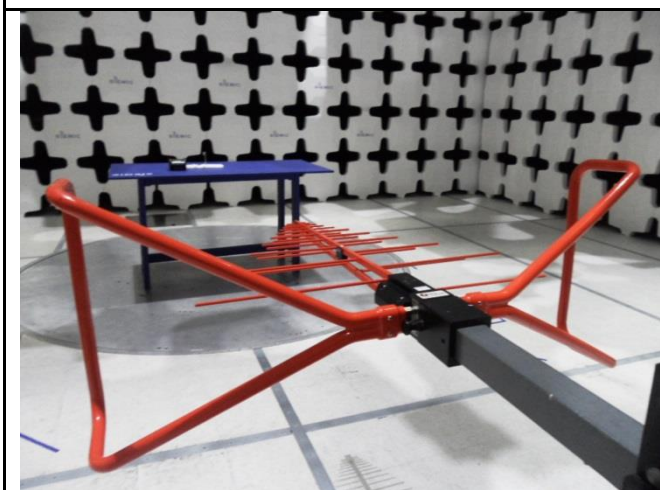




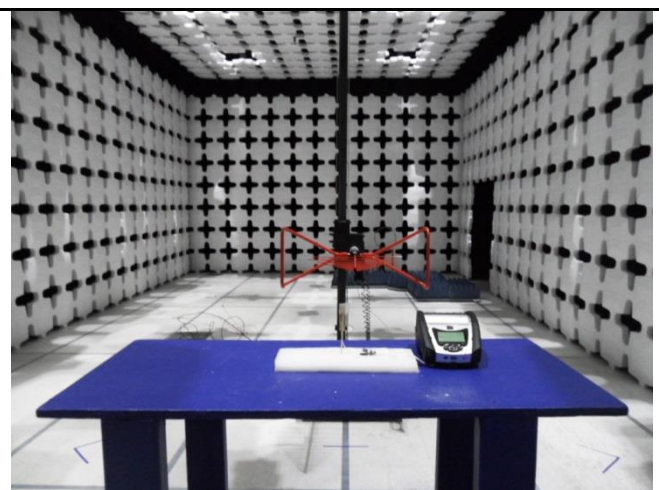
Conducted Emission Test setup - Front



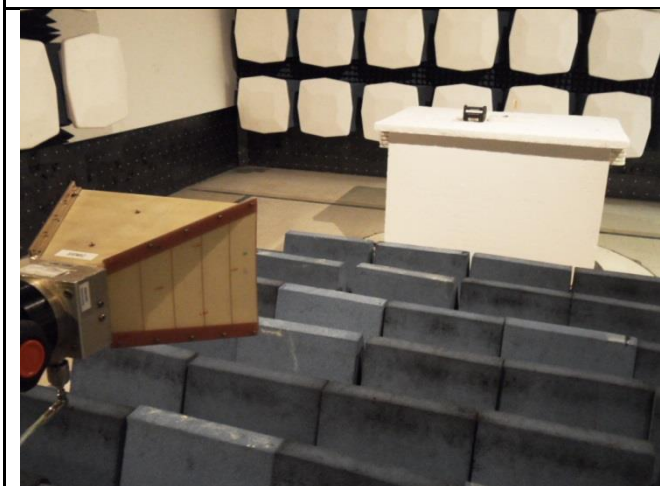
Conducted Emission Test setup - Rear



Radiated Emission Test Setup (30MHz-1GHz) - Front



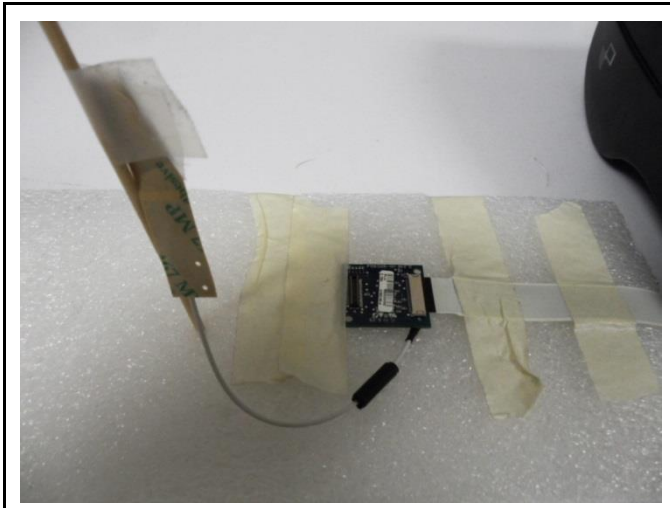
Radiated Emission Test Setup (30MHz-1GHz) - Rear



Radiated Emission Test Setup (>1GHz) - Front



Radiated Emission Test Setup (>1GHz) - Rear



Setup between EUT and Antenna