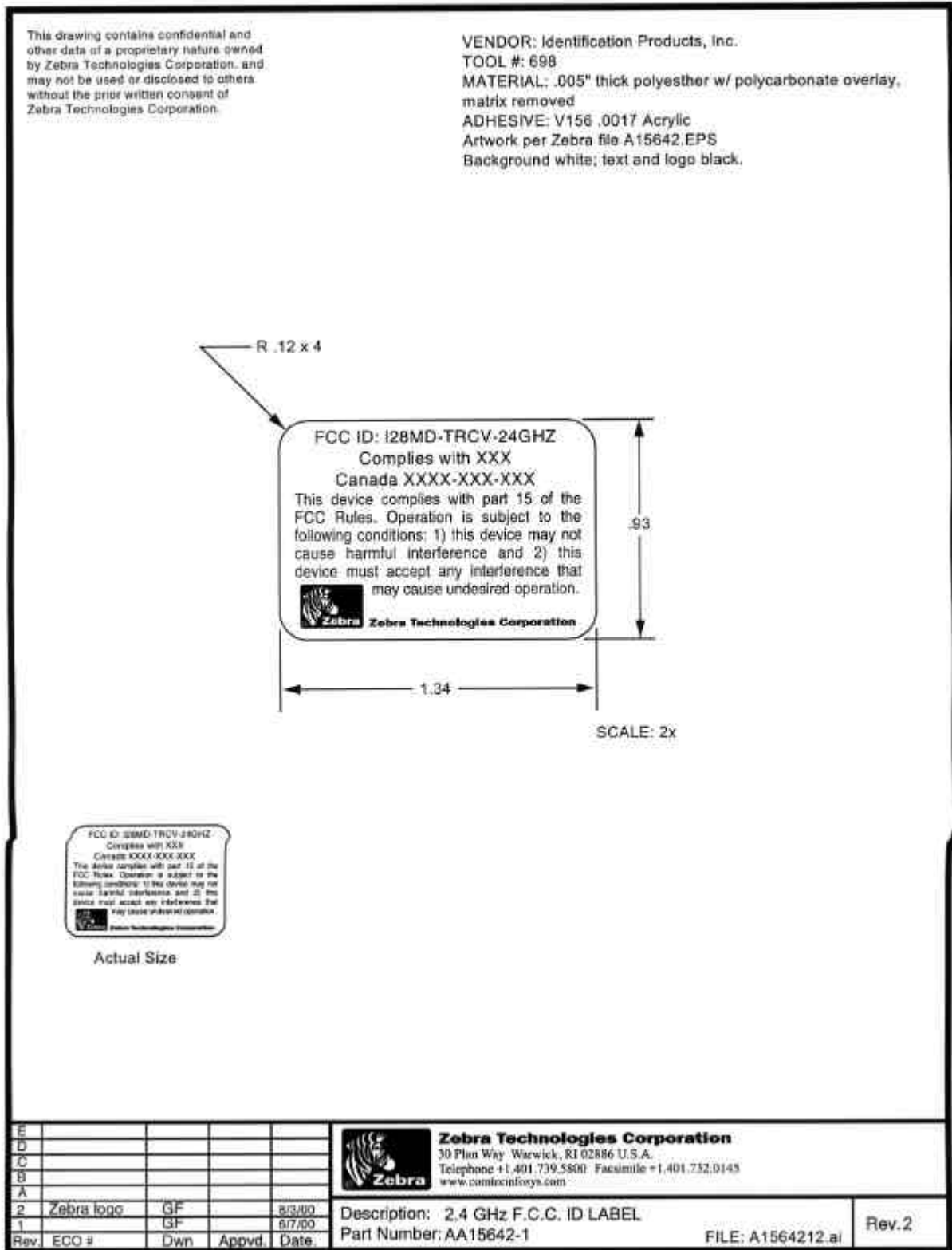


Label Artwork

This is a sample label to be affixed to the outside of the host unit. The warning required by 15.19(a)(5) is included in the label below. Instructions for the content and placement of the host's label appear in the module's user's guide.



This label will be affixed to the transmitter as shown in the drawing on the next page.



**NO NET SCALE DRAWING**

REVISIONS			
REV.	DATE	BY	APP.
1			

**ASSEMBLY INSTRUCTIONS:**

1. APPLY US80 CENTERED ON 0340.
2. FIT 0320 TOP SHIELD TABS TO FIT OVER ITEM 0340 BOTTOM SHIELD SURFACE.
3. SPOT-SELDER 0340 TOP SHIELD TO 0340 BOTTOM SHIELD AT 4 PLACES MARKED "X".
4. SPOT-SELDER 0320 TOP SHIELD TABS TO 0310 PC BOARD GROUND PADS NEAR MTD HOLES AT 4 PLACES MARKED "Y." LEAVE MTD HOLE OPEN.
5. SPOT-SELDER 0340 BOTTOM SHIELD TABS TO 0310 PC BOARD GROUND NEAR MOUNTING HOLES AT 4 PLACES MARKED "Y." LEAVE MTD HOLE OPEN.

PRODUCT ID LABELS ARE FACTORY SUPPLIED  
 THEY MUST SPECIFY THE FULL ASSEMBLY  
 NUMBER INCLUDING THE DASH NUMBER  
 AND THE REVISION LEVEL.

ORIENT SPINNING OVER  
 ANTENNA CONNECTOR ON  
 ITEM 310

REFERENCE ONLY

REV.	DATE	BY	APP.	DESCRIPTION

<b>CONTROL SYSTEMS</b>	SIGNATURES	DATE	Control Systems Systems, Inc. 1000 West 10th Street, Suite 1000 Fort Worth, TX 76102-1000
			<b>MIDULAR 2.4 GHZ                  SHORT RANGE RADIO</b>
			PART NO. CC15380-TAB 1 REV. 01 1/94