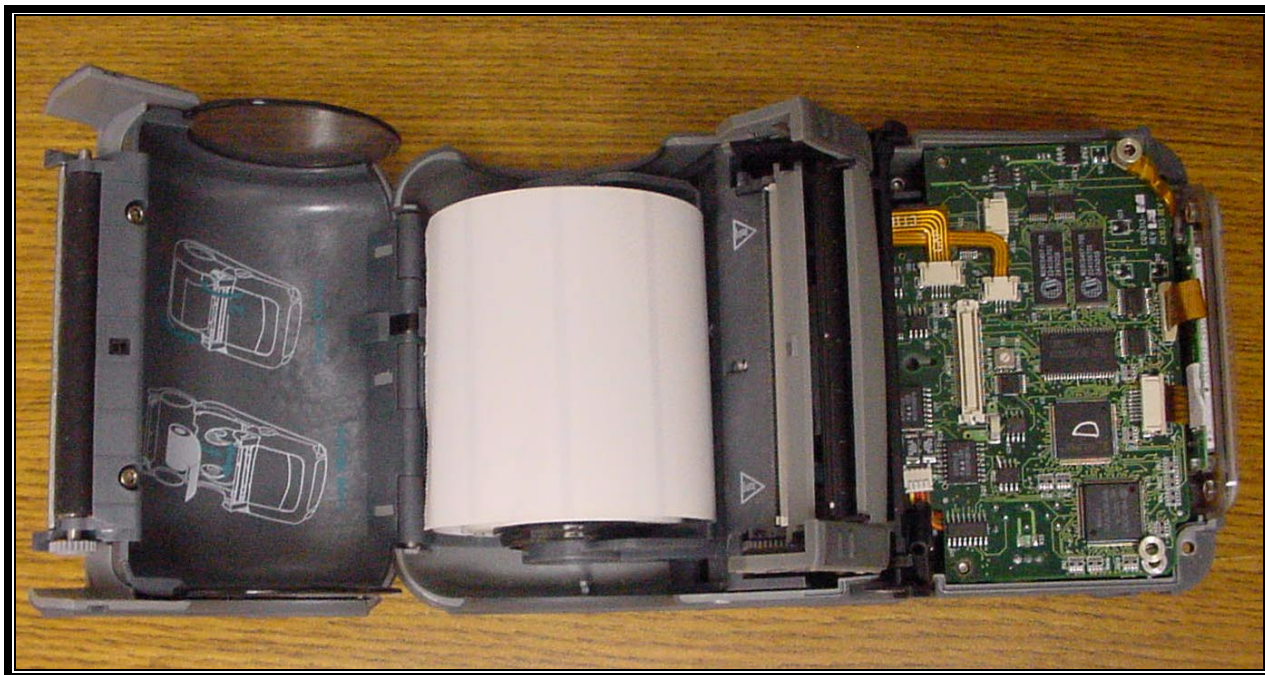
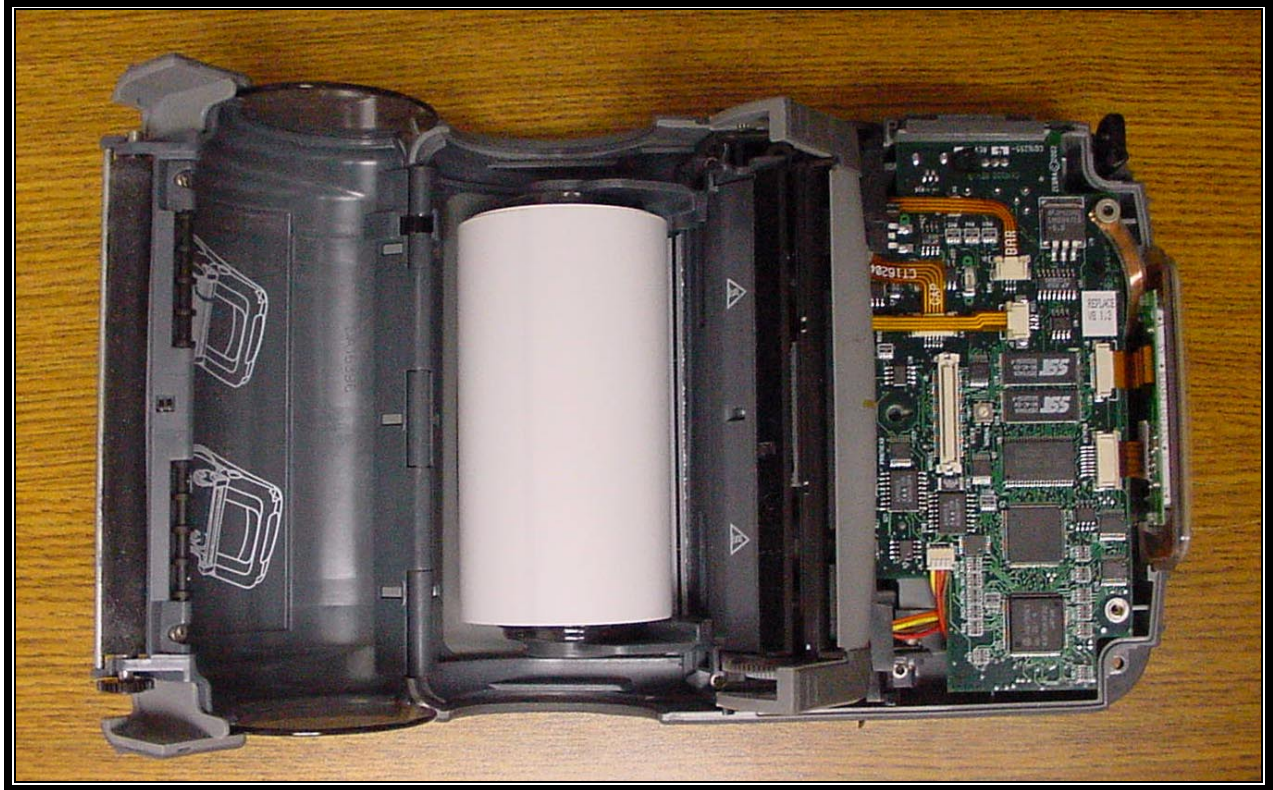


## APPENDIX N: INTERNAL PHOTOGRAPHS

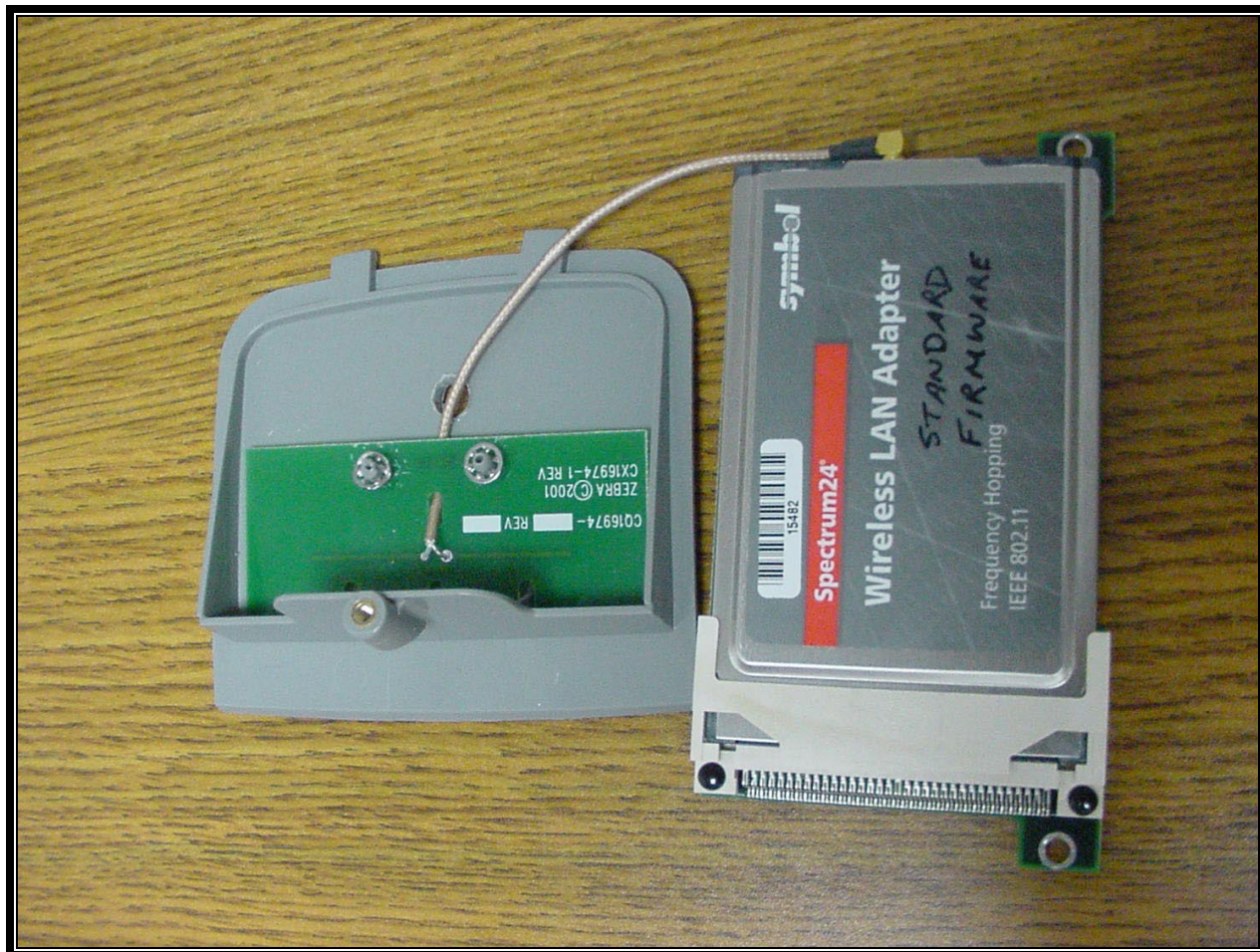


**PHOTOGRAPH 10: QL-320 PRINTER - INTERNAL VIEW**

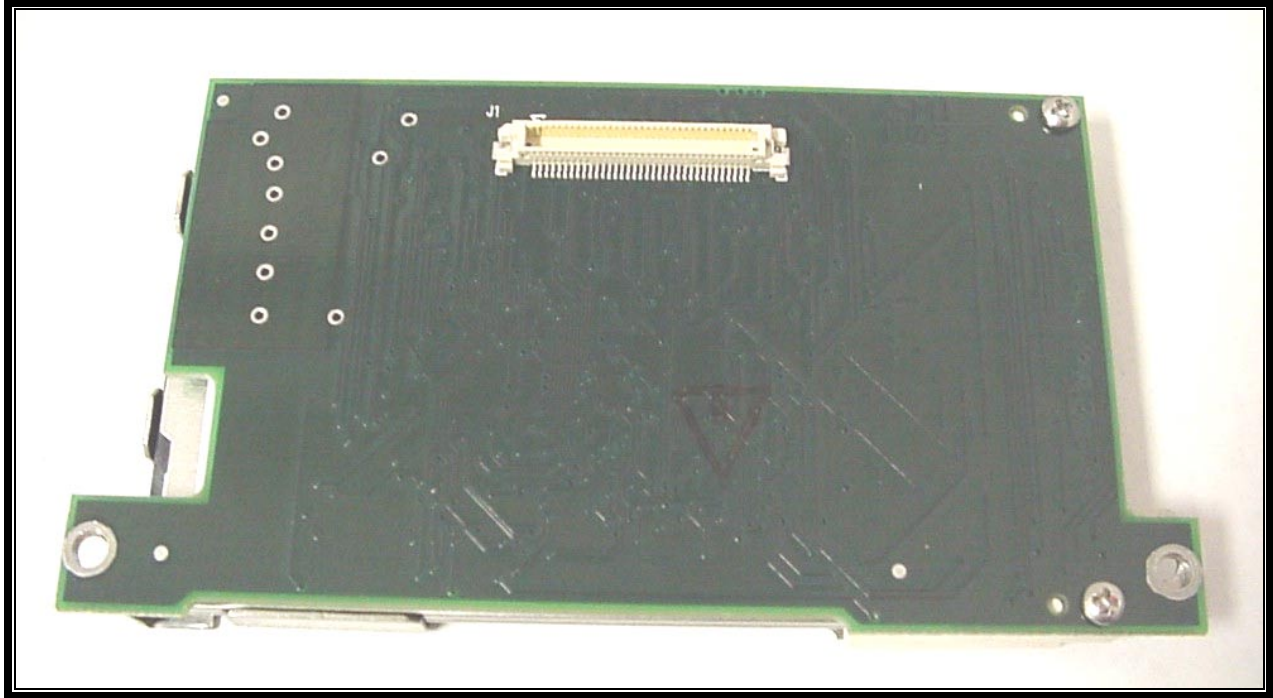


**PHOTOGRAPH 11: QL-420 PRINTER - INTERNAL VIEW**

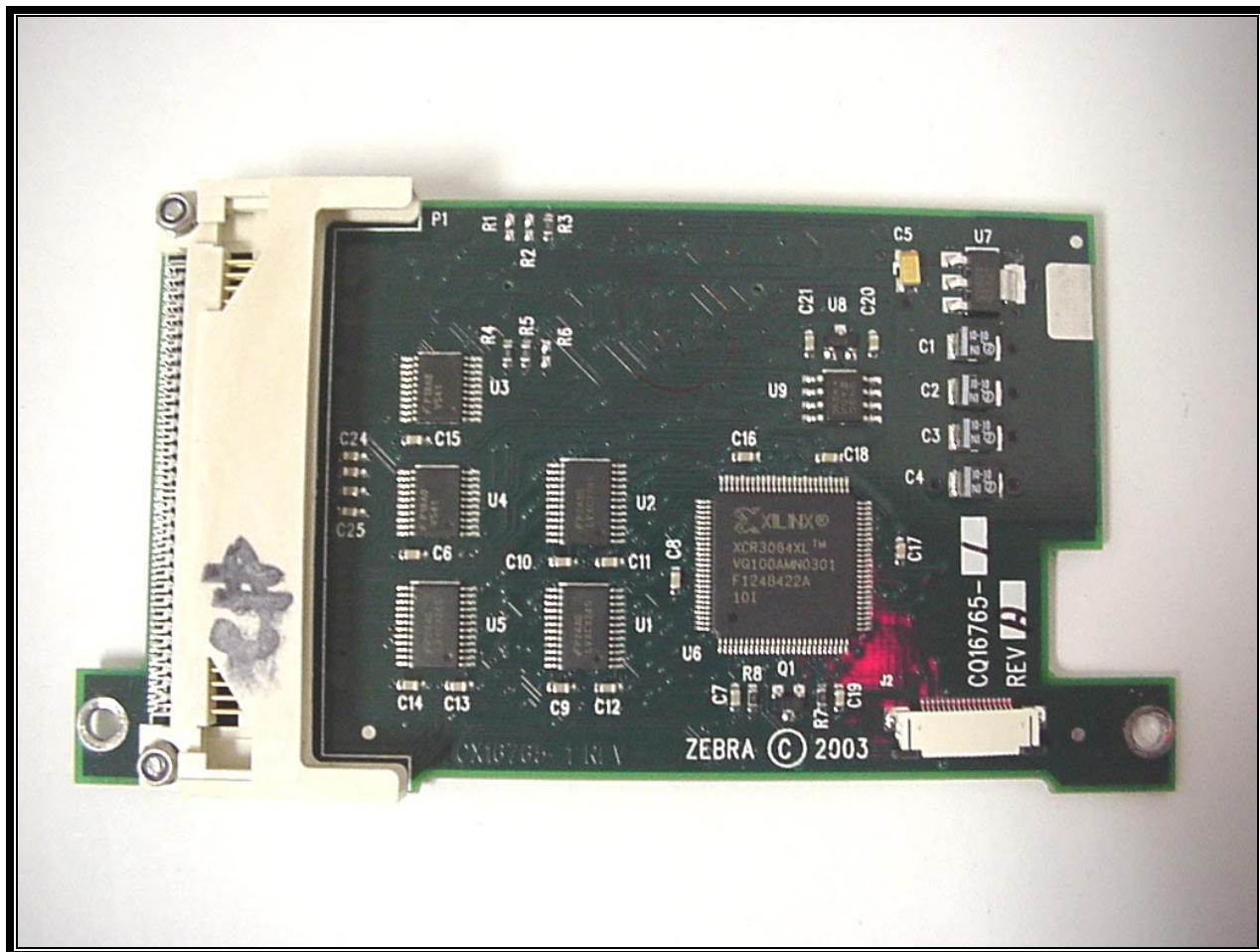




**PHOTOGRAPH 12: TOP OF MODULE WITH ANTENNA ATTACHED**

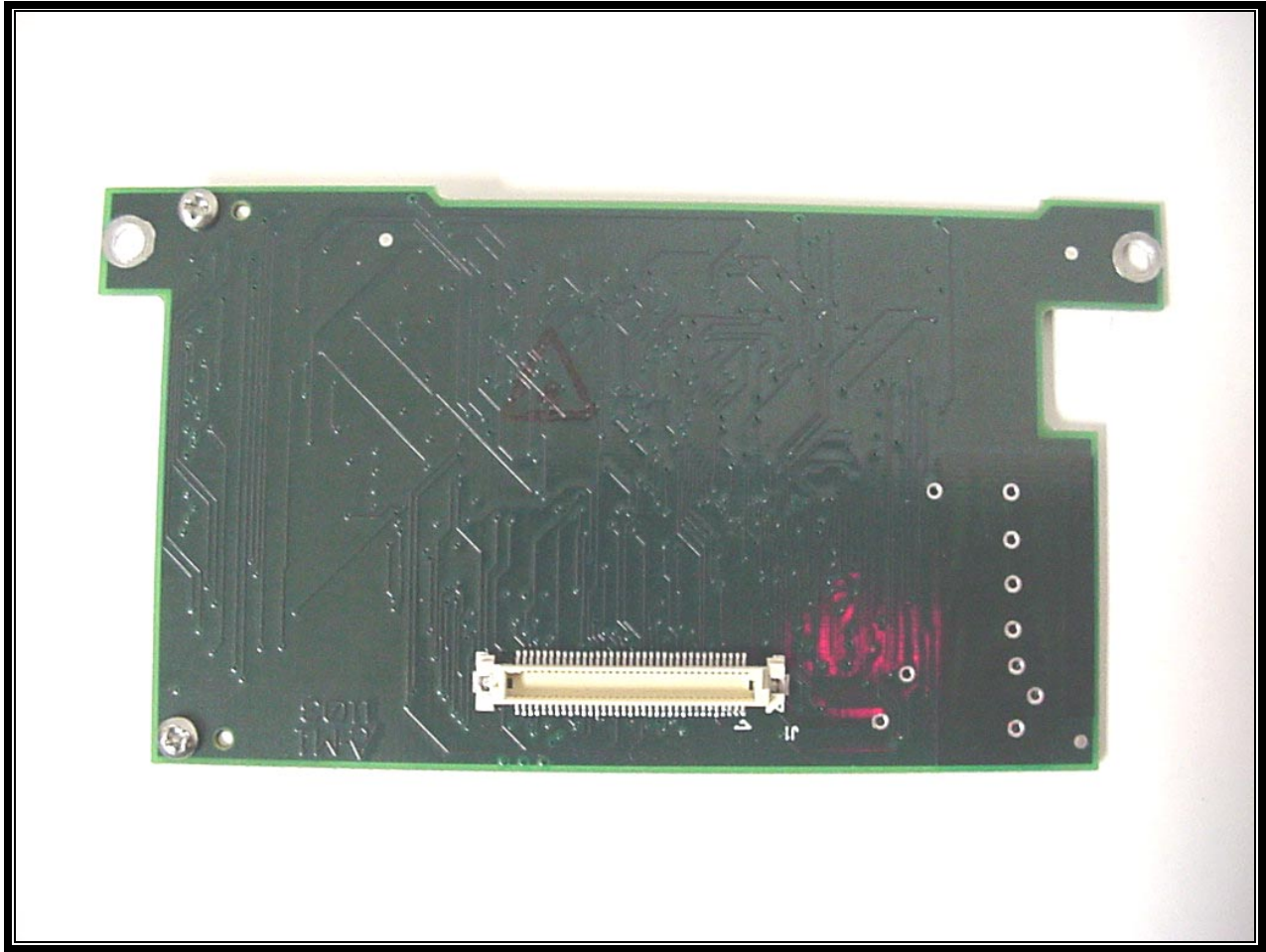


**PHOTOGRAPH 13: BOTTOM OF MODULE**

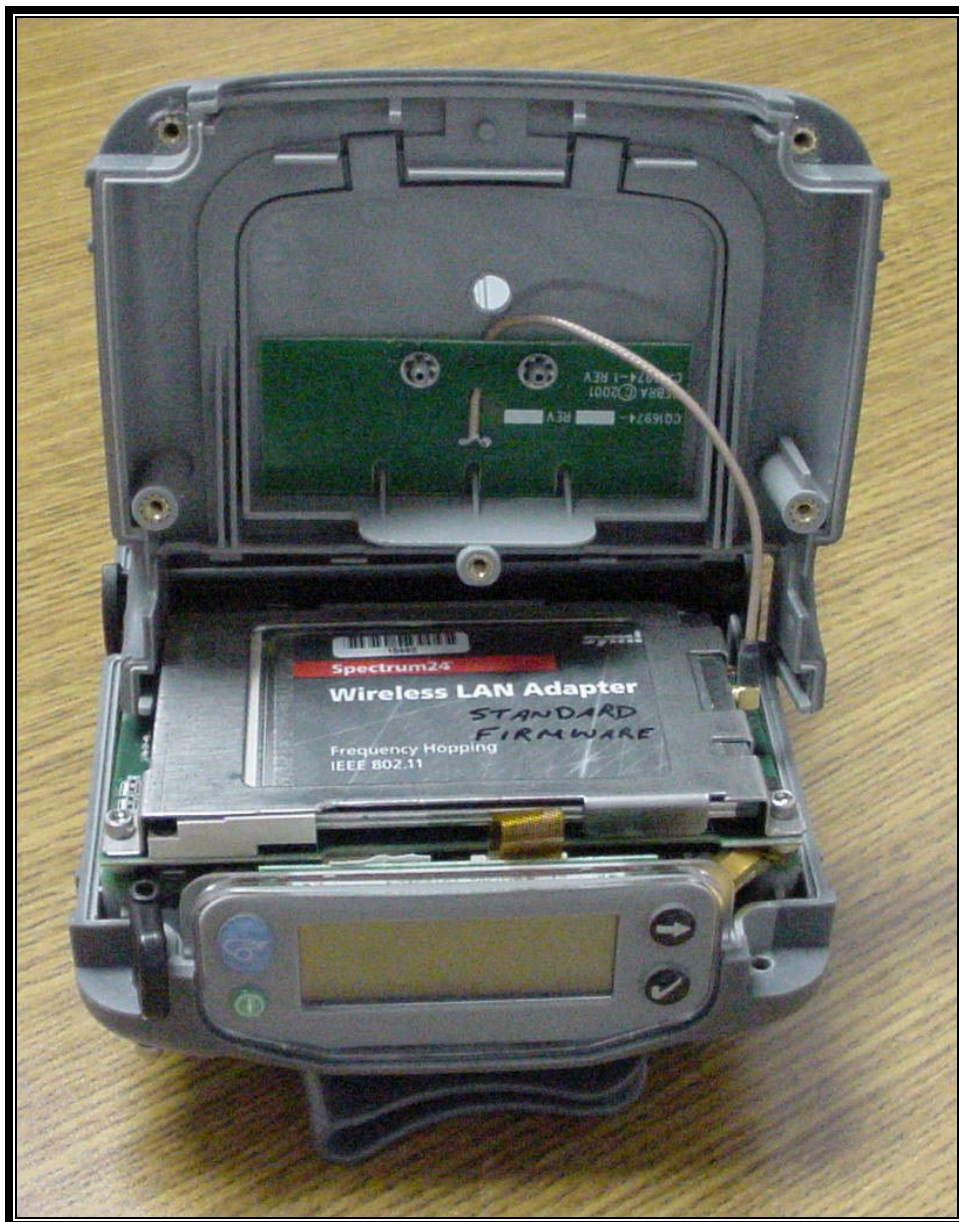


**PHOTOGRAPH 14: TOP OF PCMCIA PCB**



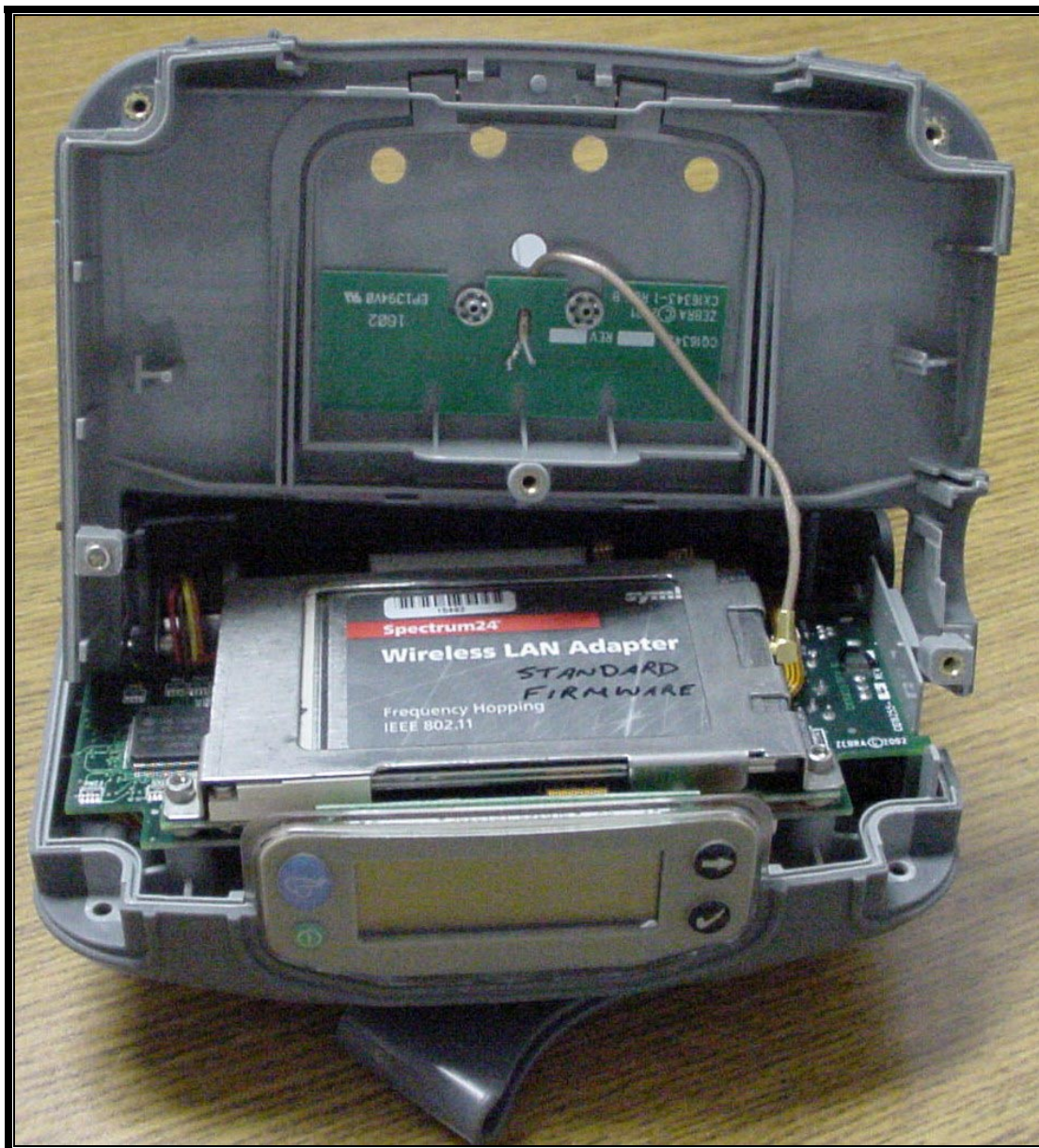


**PHOTOGRAPH 15: BOTTOM OF PCMCIA PCB**



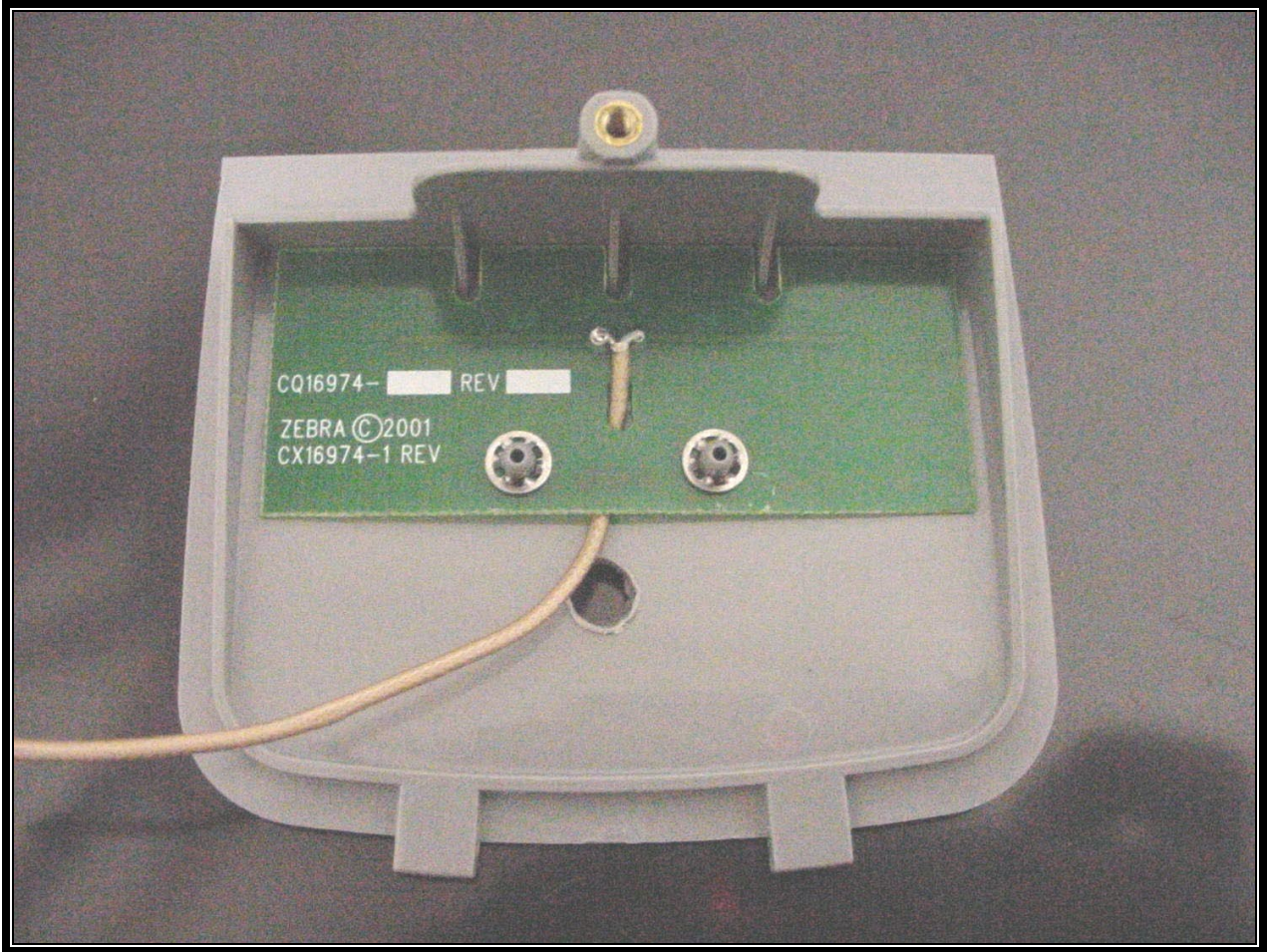
**PHOTOGRAPH 16: ANTENNA MOUNTED IN QL320 CASE UPPER CASE SHOWING LOCATION OF RELATIVE RF COMPONENTS**



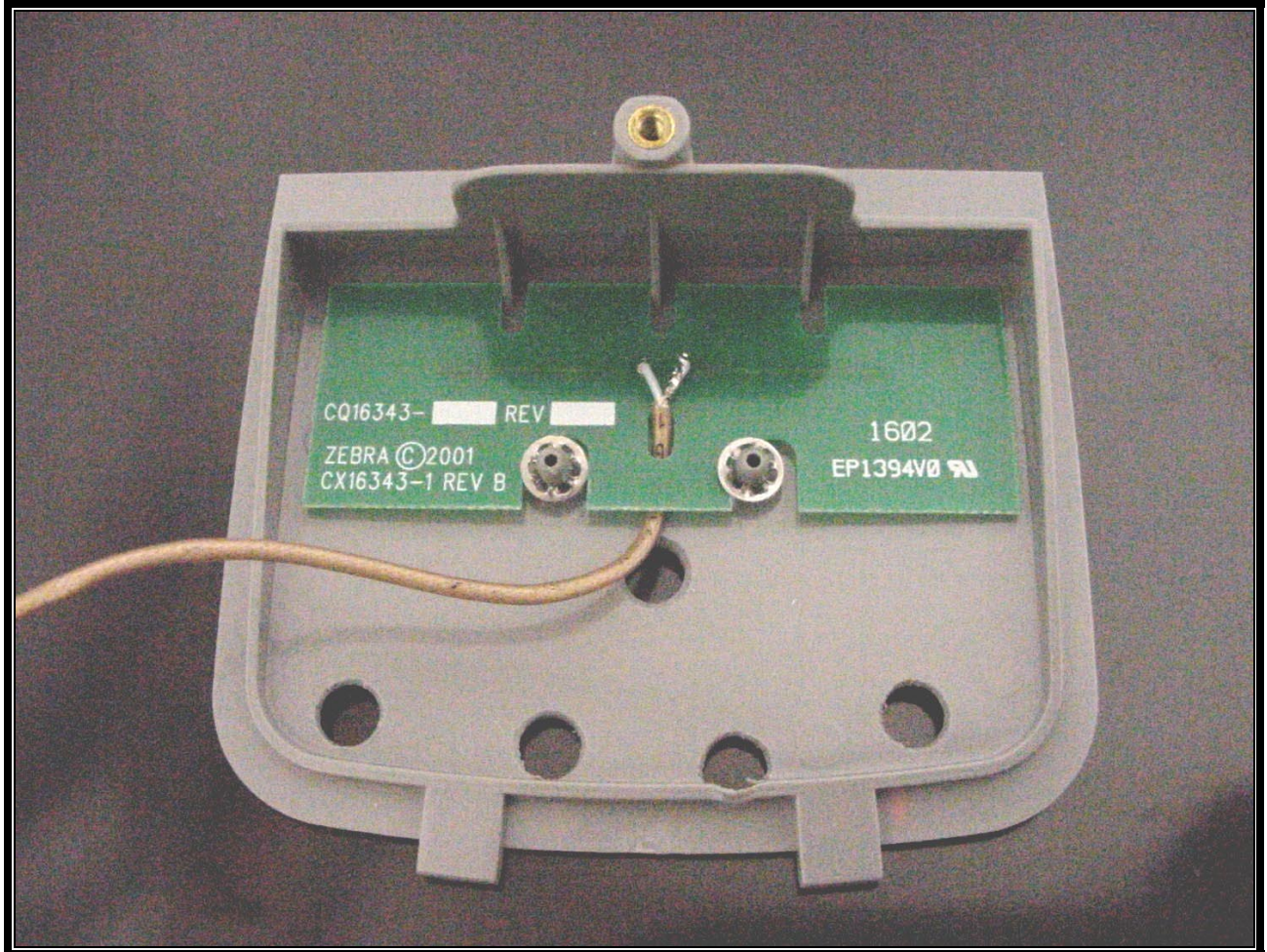


**PHOTOGRAPH 17: ANTENNA MOUNTED IN QL420 UPPER CASE SHOWING LOCATION OF RELATIVE RF COMPONENTS**



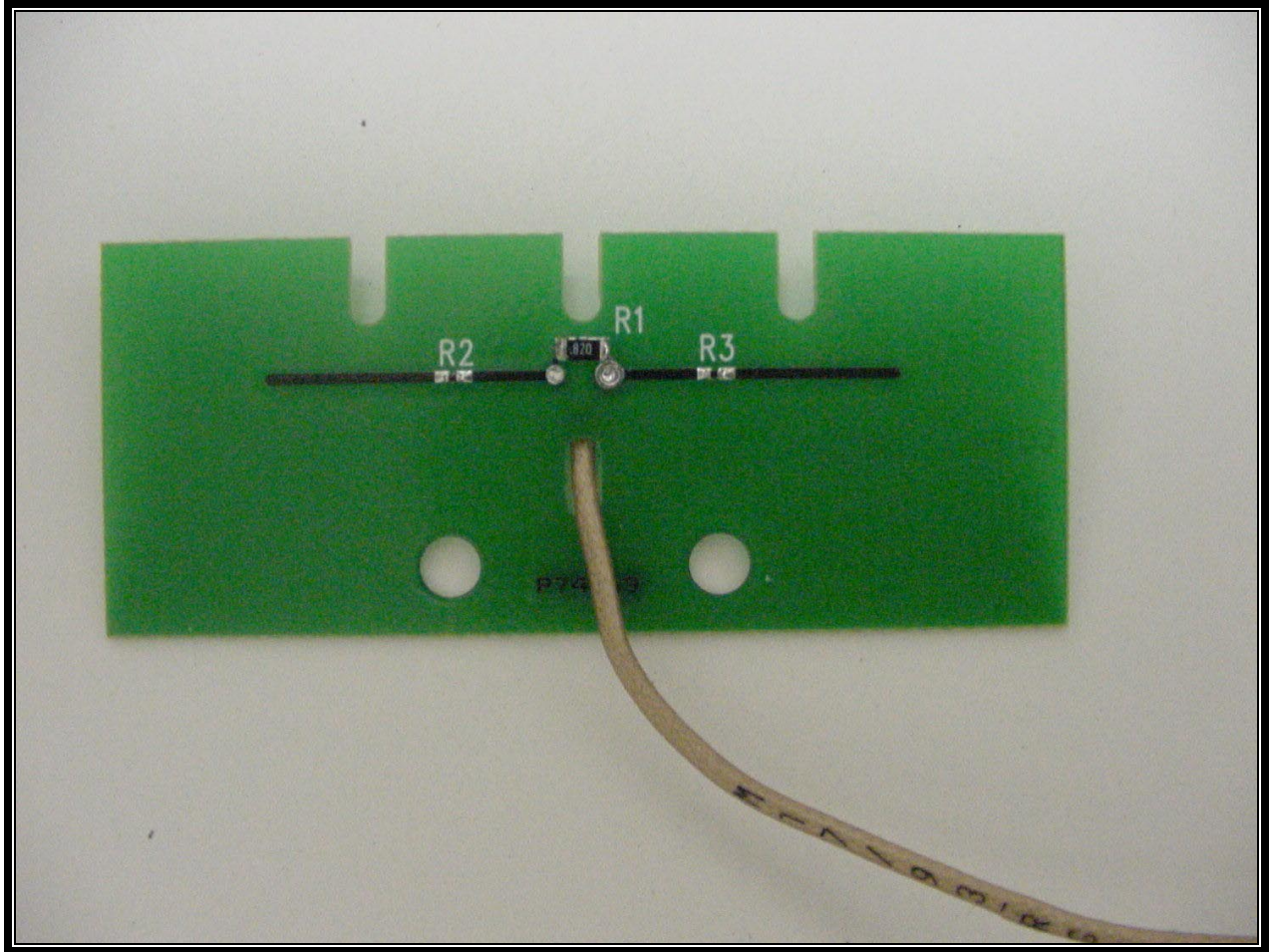


**PHOTOGRAPH 18: BOTTOM OF QL-320 ANTENNA IN MOUNTING BRACKET**

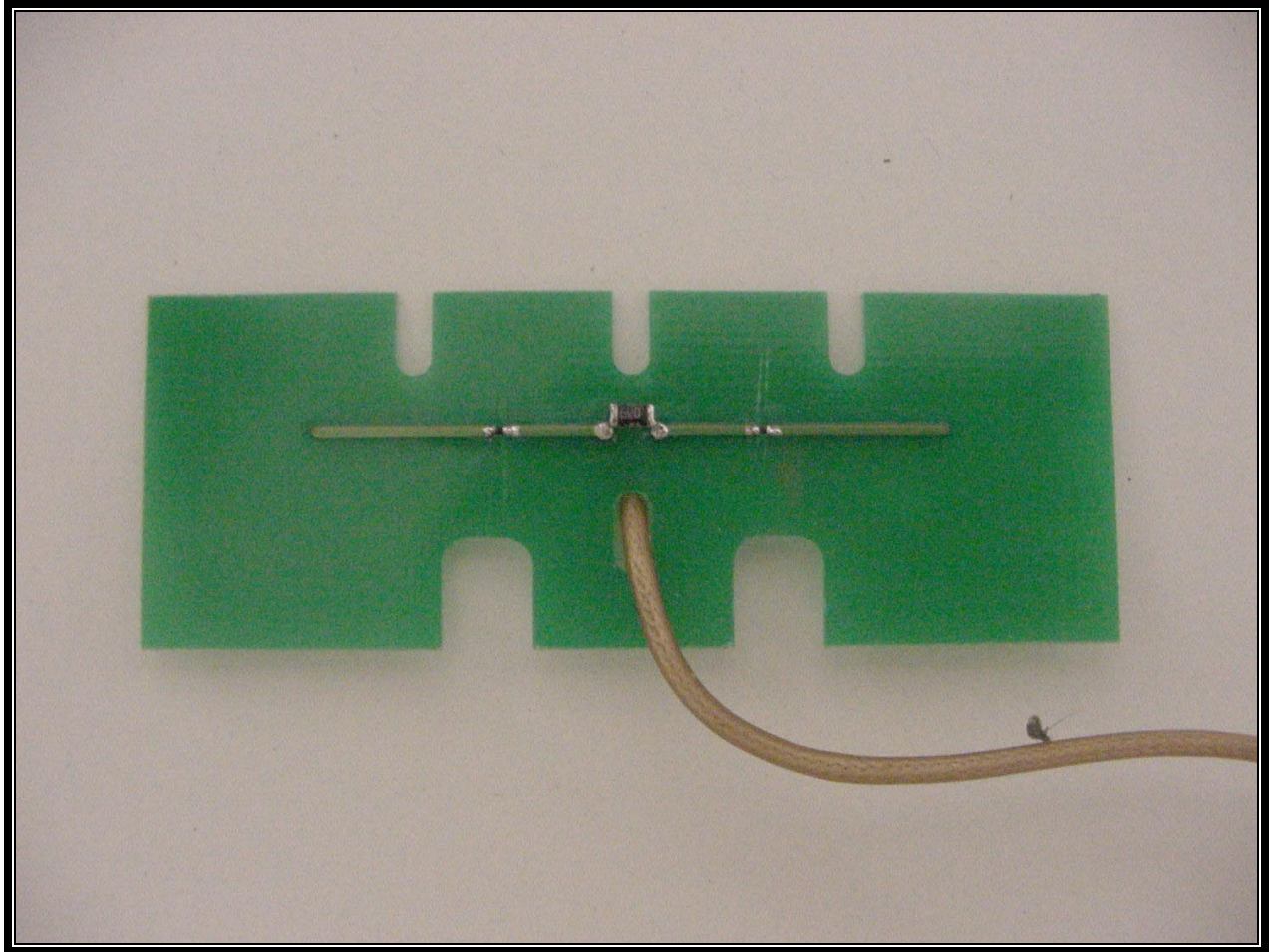


**PHOTOGRAPH 19: BOTTOM OF QL-420 ANTENNA IN MOUNTING BRACKET**



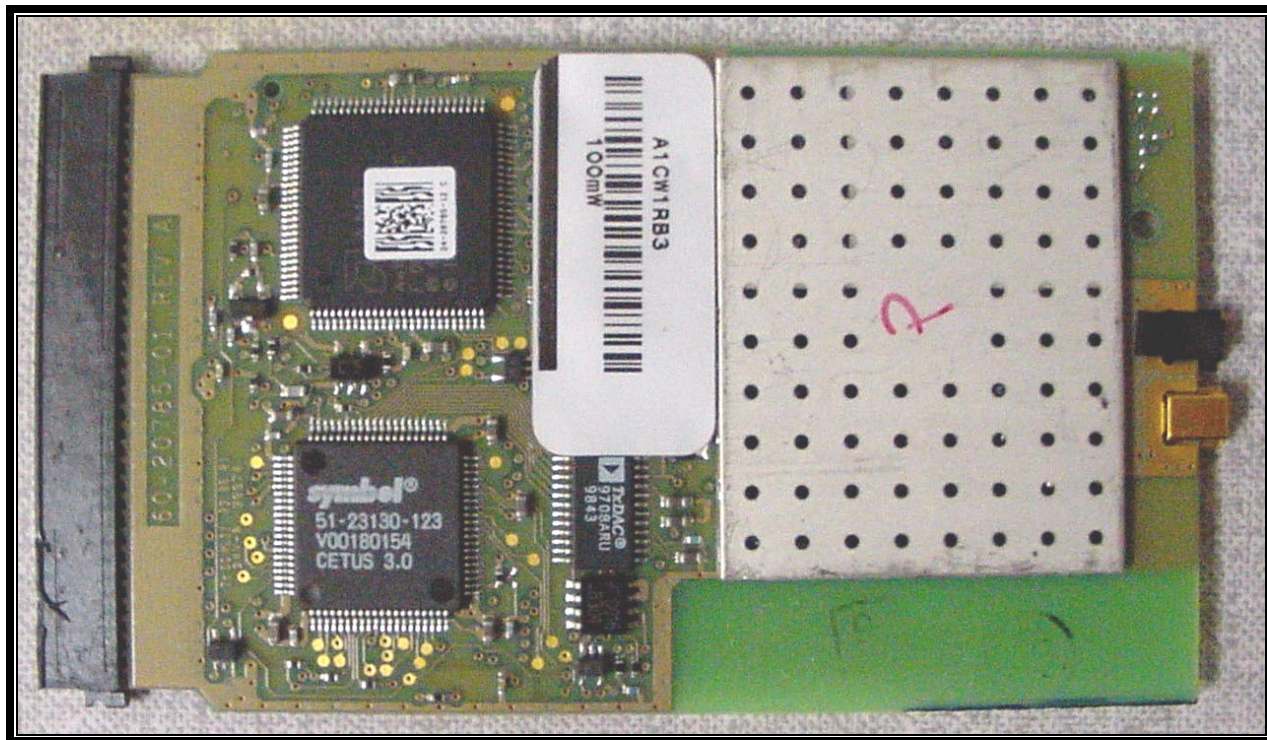


**PHOTOGRAPH 20: TOP OF QL-320 ANTENNA**

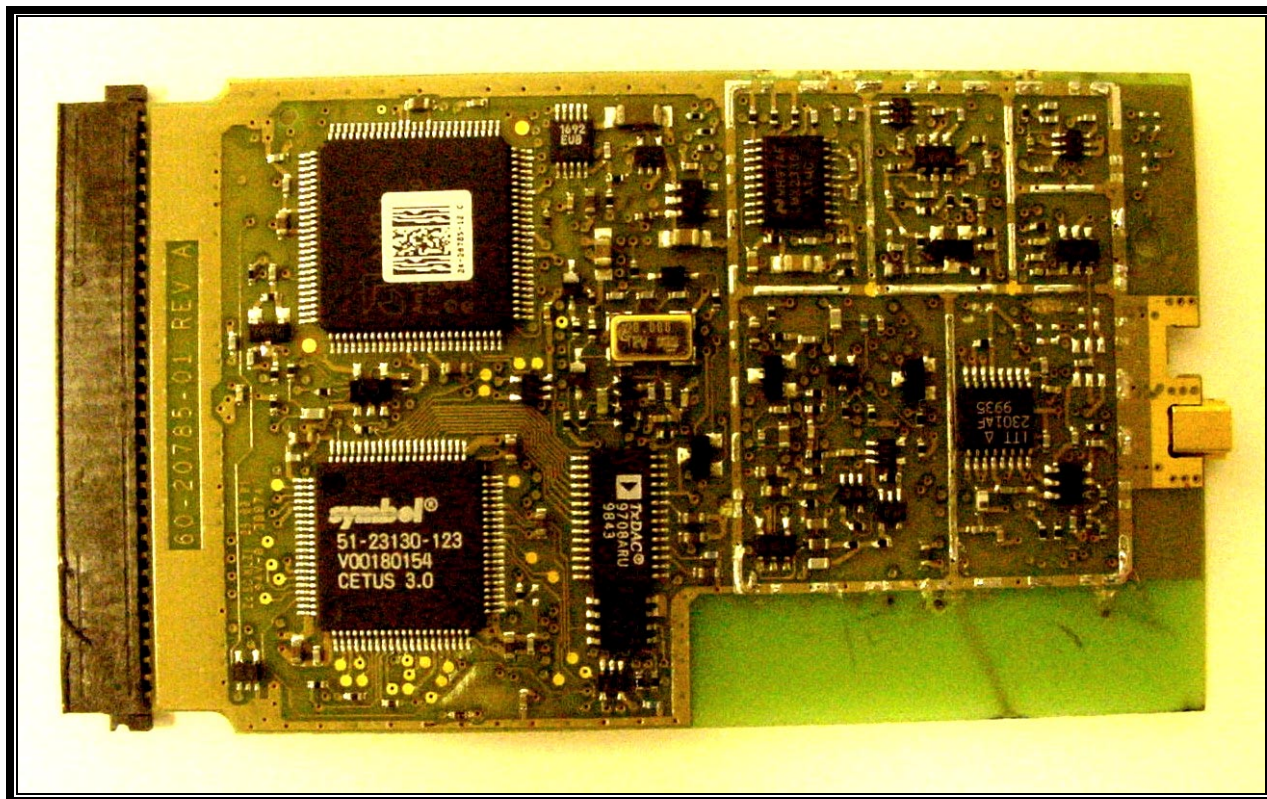


**PHOTOGRAPH 21: TOP OF QL-420 ANTENNA**



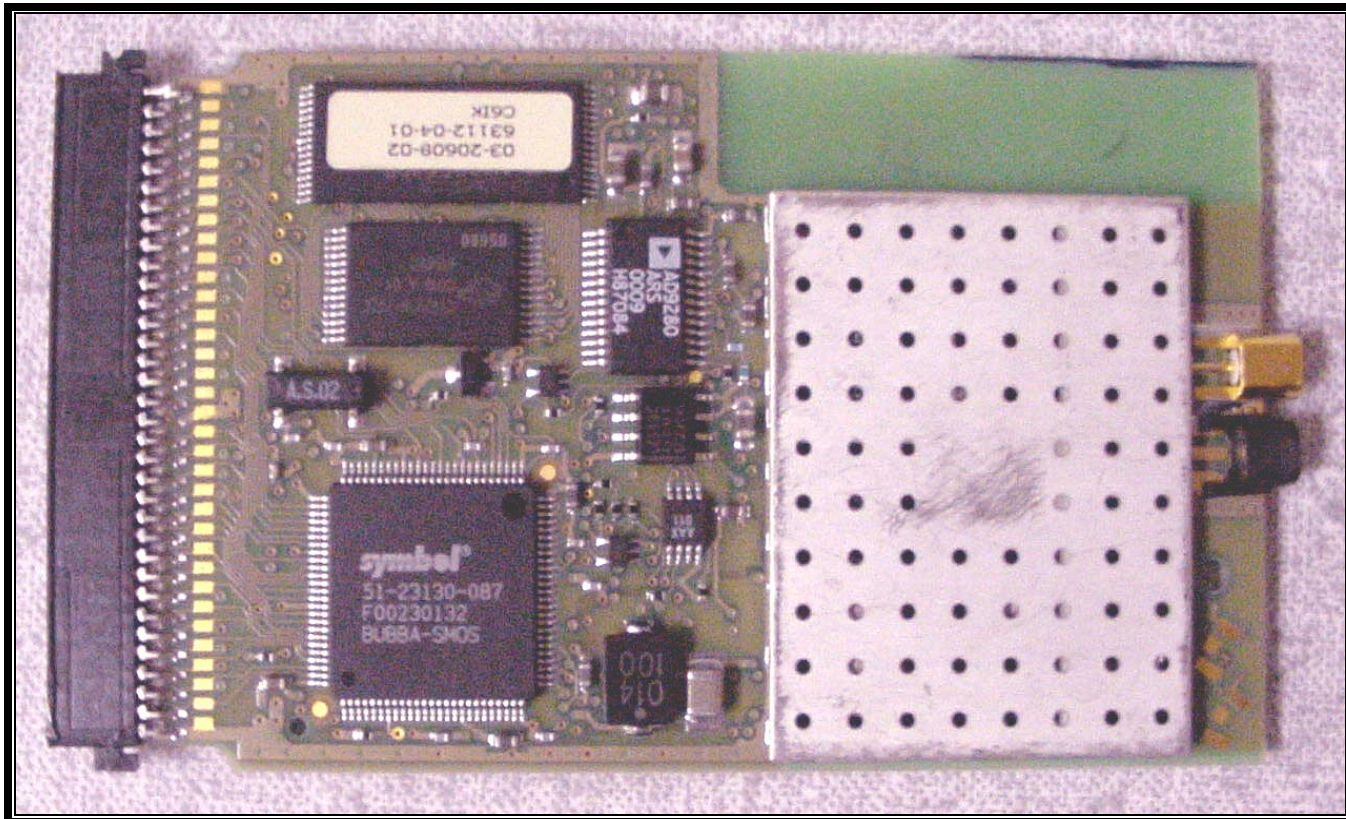


**PHOTOGRAPH 22: BOTTOM OF PCMCIA PCB WITH SHIELDS**

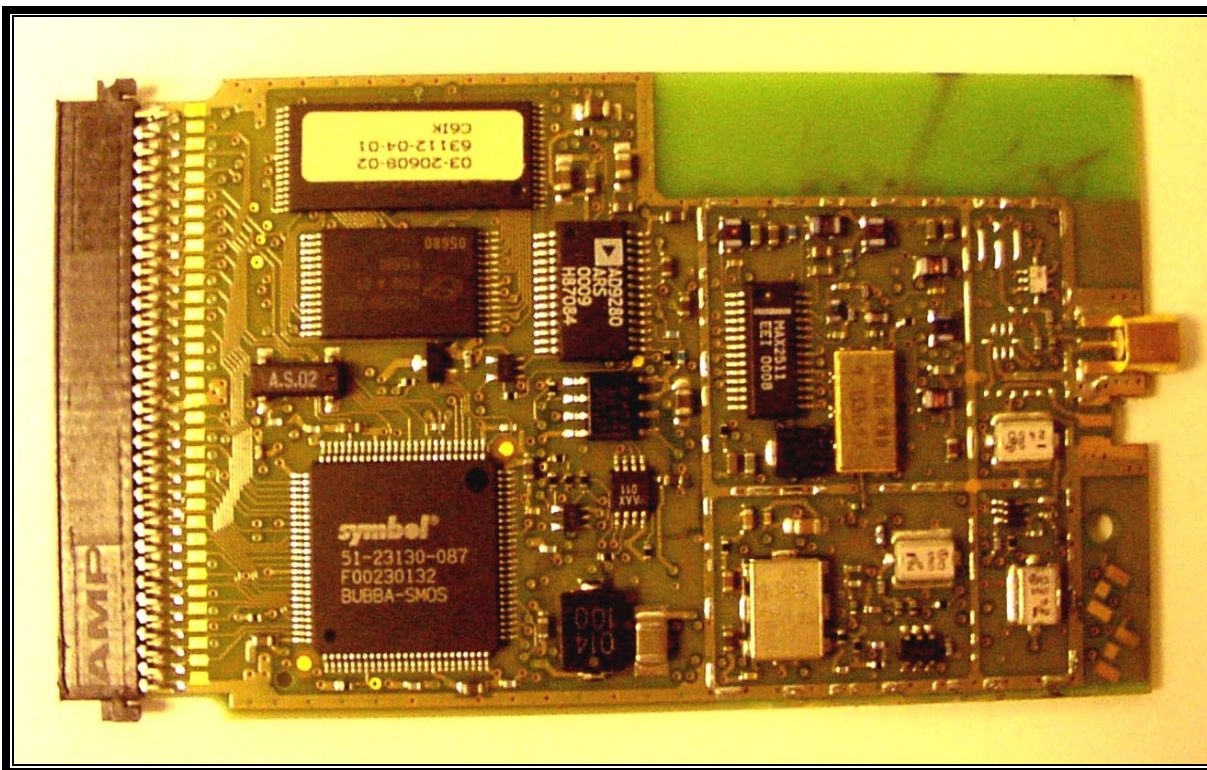


**PHOTOGRAPH 23: BOTTOM OF PCMCIA PCB WITHOUT SHIELDS**





**PHOTOGRAPH 24: TOP OF PCMCIA PCB WITH SHIELDS**



**PHOTOGRAPH 25: TOP OF PCMCIA PCB WITHOUT SHIELDS**