



Report No.: HCT-SAR05-1106 FCC ID: H9PLA4137 w/ I28MD-BTC2TY4 DATE: November 14, 2005

ATTACHMENT C – DIPOLE VALIDATION

Validation Data (2450MHz Head)

Dipole 2450 MHz

SAM II Phantom; Flat Section; Position: (90°,90°); Frequency: 2450 MHz

Probe: ET3DV6 - SN1798; ConvF(4.75,4.75,4.75); Crest factor: 1.0; Brain 2450 MHz: $\sigma = 1.82 \text{ mho/m}$ $\epsilon_r = 39.2$ $\rho = 1.00 \text{ g/cm}^3$

Cube 5x5x7: SAR (1g): 53.0 mW/g, SAR (10g): 24.2 mW/g

Coarse: Dx = 20.0, Dy = 20.0, Dz = 10.0

Powerdrift: -0.05 dB

Comment :

Dipole Validation (D2450V2/ S.N: 743)

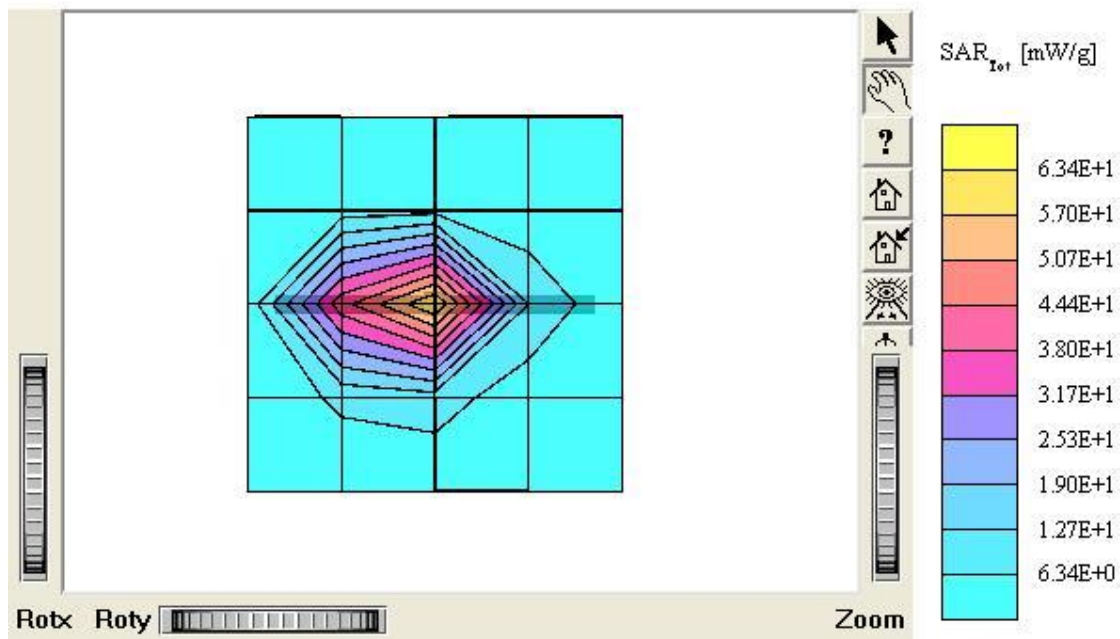
2450MHz Brain

Antenna Input Power: 30dBm (1 W)

HCT Co., Ltd. Brain Tissue Simulating Liquid

Liquid Temperature : 21.5 °C

Date Tested : November 12, 2005



Dipole 2450 MHz

SAM II Phantom; Section; Position: ; Frequency: 2450 MHz

Probe: ET3DV6 - SN1798; ConvF(4.75,4.75,4.75); Crest factor: 1.0; Brain 2450 MHz: $\sigma = 1.82 \text{ mho/m}$ $\epsilon_r = 39.2$ $\rho = 1.00 \text{ g/cm}^3$

:

Z-Axis: Dx = 0.0, Dy = 0.0, Dz = 5.0

Comment :

Dipole Validation (D2450V2/ S.N: 743)

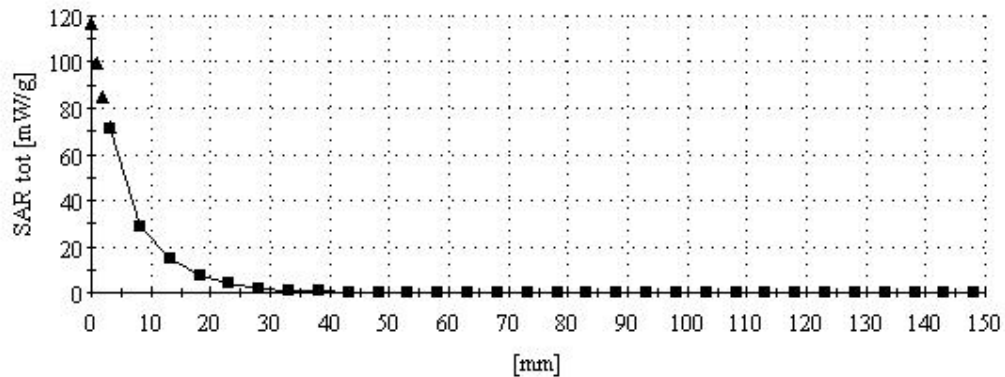
2450MHz Brain

Antenna Input Power: 30dBm (1 W)

HCT Co., Ltd. Brain Tissue Simulating Liquid

Liquid Temperature : 21.5 °C

Date Tested : November 12, 2005



■ Dielectric Parameter (2450MHz Head)

Title : QL 420 Plus**SubTitle : 2450 MHz Head**

November 12, 2005 09:39 AM

Frequency	e'	e''
2.400000000 GHz	39.5355	13.2822
2.405000000 GHz	39.4881	13.2791
2.410000000 GHz	39.4610	13.2731
2.415000000 GHz	39.4140	13.3064
2.420000000 GHz	39.3547	13.3083
2.425000000 GHz	39.3507	13.3222
2.430000000 GHz	39.3312	13.3242
2.435000000 GHz	39.2915	13.3352
2.440000000 GHz	39.2546	13.3522
2.445000000 GHz	39.2445	13.3744
2.450000000 GHz	39.2199	13.3923
2.455000000 GHz	39.1962	13.4207
2.460000000 GHz	39.1642	13.4424
2.465000000 GHz	39.1613	13.4391
2.470000000 GHz	39.1352	13.4670
2.475000000 GHz	39.1249	13.5065
2.480000000 GHz	39.0975	13.5162
2.485000000 GHz	39.0711	13.5139
2.490000000 GHz	39.0432	13.5577
2.495000000 GHz	39.0191	13.5703
2.500000000 GHz	39.0615	13.5726

■ Dielectric Parameter (2450MHz Body)

Title : QL 420 Plus

SubTitle : 2450 MHz Body

November 12, 2005 10:46 AM

Frequency	e'	e''
2.400000000 GHz	51.3487	14.6435
2.405000000 GHz	51.3214	14.6599
2.410000000 GHz	51.3143	14.6409
2.415000000 GHz	51.2409	14.6734
2.420000000 GHz	51.2267	14.6965
2.425000000 GHz	51.1805	14.7295
2.430000000 GHz	51.1545	14.7454
2.435000000 GHz	51.1281	14.7878
2.440000000 GHz	51.1144	14.7891
2.445000000 GHz	51.0756	14.8326
2.450000000 GHz	51.0630	14.8402
2.455000000 GHz	51.0528	14.8673
2.460000000 GHz	51.0105	14.8861
2.465000000 GHz	50.9898	14.9340
2.470000000 GHz	50.9959	14.9673
2.475000000 GHz	50.9670	14.9961
2.480000000 GHz	50.9660	15.0199
2.485000000 GHz	50.9178	15.0325
2.490000000 GHz	50.9358	15.0589
2.495000000 GHz	50.9442	15.0864
2.500000000 GHz	50.9094	15.1088