



**Report No.: HCT-SAR05-0903**

**FCC ID: H9PLA4137 w/I28MD-BTC2TY4**

**DATE: September 8, 2005**

---

## **ATTACHMENT C – DIPOLE VALIDATION**

## Validation Data (2450MHz Head)

### Dipole 2450 MHz

SAM I Phantom; Flat Section; Position: (90°,90°); Frequency: 2450 MHz

Probe: ET3DV6 - SN1798; ConvF(4.75,4.75,4.75); Crest factor: 1.0; Brain 2450 MHz:  $\sigma = 1.81$  mho/m  $\epsilon_r = 38.9$   $\rho = 1.00$  g/cm<sup>3</sup>

Cubes (2): SAR (1g): 52.2 mW/g  $\pm 0.01$  dB, SAR (10g): 24.0 mW/g  $\pm 0.01$  dB

Coarse: Dx = 20.0, Dy = 20.0, Dz = 10.0

Peak: 109 mW/g  $\pm 0.03$  dB; Powerdrift: -0.02 dB

Comment :

Dipole Validation (CD2450V3/ S.N: 1022)

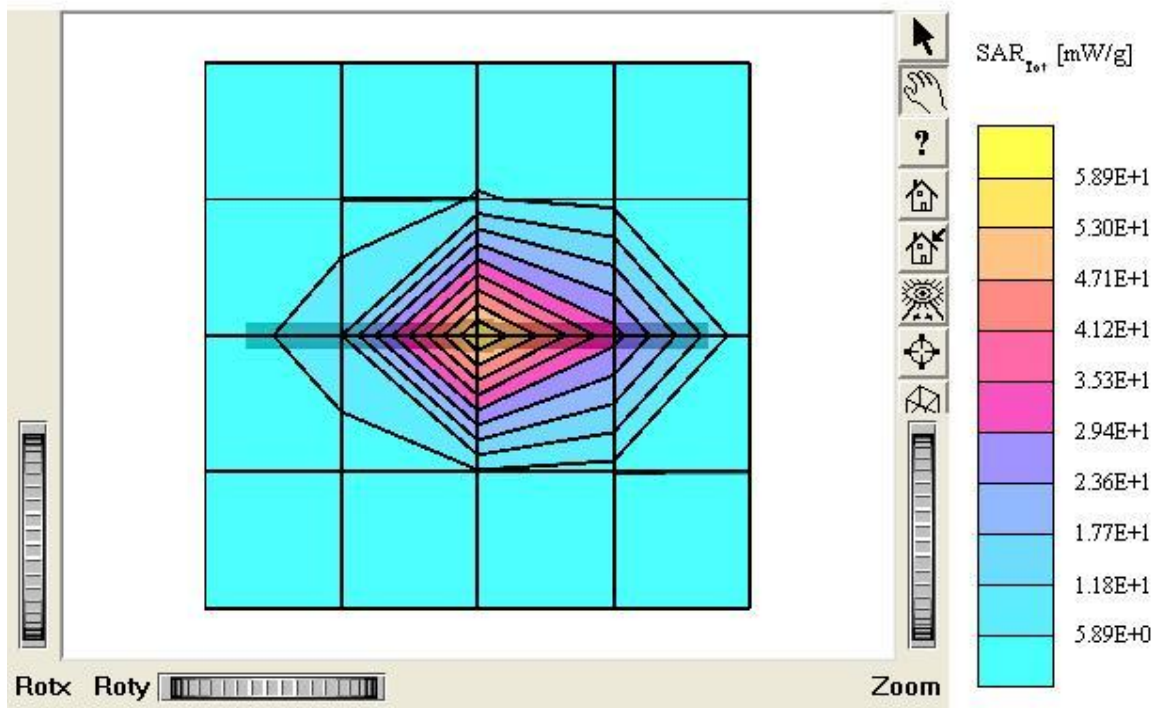
2450MHz Brain

Antenna Input Power: 30dBm (1 W)

HCT Co., Ltd. Brain Tissue Simulating Liquid

Liquid Temperature : 21.4 °C

Date Tested : September 7, 2005



## Dipole 2450 MHz

SAM I Phantom; Section; Position: ; Frequency: 2450 MHz

Probe: ET3DV6 - SN1798; ConvF(4.75,4.75,4.75); Crest factor: 1.0; Brain 2450 MHz:  $\sigma = 1.81$  mho/m  $\epsilon_r = 38.9$   $\rho = 1.00$  g/cm<sup>3</sup>

:

Z-Axis: Dx = 0.0, Dy = 0.0, Dz = 5.0

:

Comment :

Dipole Validation (D2450V2/ S.N: 743)

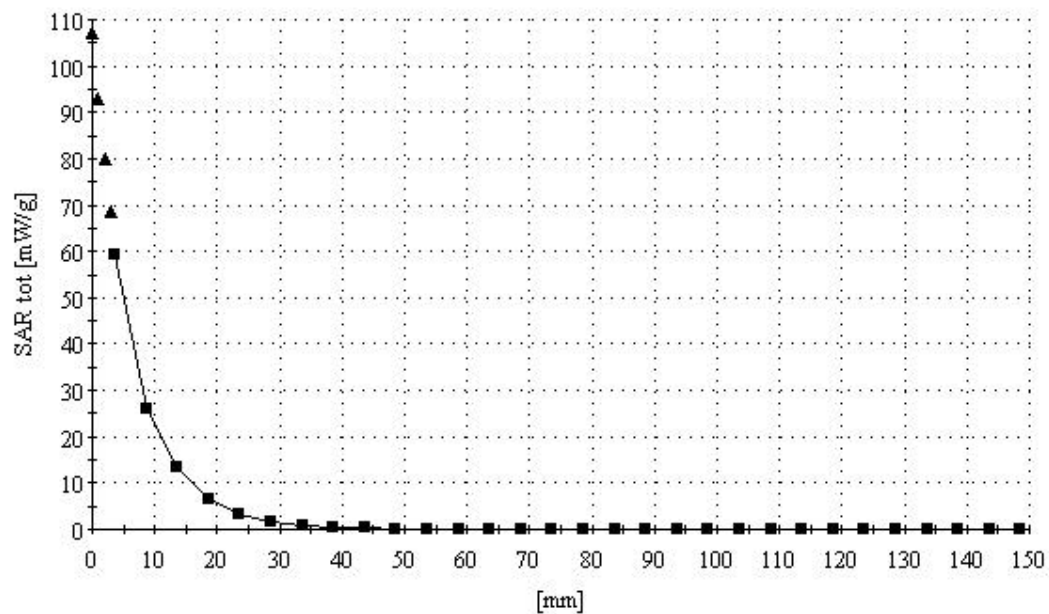
2450MHz Brain

Antenna Input Power: 30dBm (1 W)

HCT Co., Ltd. Brain Tissue Simulating Liquid

Liquid Temperature : 21.4 °C

Date Tested : September 7, 2005



## ■ Dielectric Parameter (2450MHz Head)

**Title : QL 220 Plus****SubTitle : 2450 MHz Head**

September 07, 2005 09:38 AM

Frequency	e'	e''
2.400000000 GHz	39.1520	13.1584
2.405000000 GHz	39.1221	13.1527
2.410000000 GHz	39.0880	13.1450
2.415000000 GHz	39.0468	13.1684
2.420000000 GHz	39.0483	13.1895
2.425000000 GHz	39.0550	13.2230
2.430000000 GHz	39.0545	13.2179
2.435000000 GHz	39.0091	13.2286
2.440000000 GHz	38.9971	13.2390
2.445000000 GHz	38.9925	13.2875
2.450000000 GHz	38.9484	13.2891
2.455000000 GHz	38.8928	13.2702
2.460000000 GHz	38.8902	13.3199
2.465000000 GHz	38.9165	13.3285
2.470000000 GHz	38.8631	13.3635
2.475000000 GHz	38.8570	13.3886
2.480000000 GHz	38.8722	13.3705
2.485000000 GHz	38.8320	13.3974
2.490000000 GHz	38.8007	13.4277
2.495000000 GHz	38.7820	13.4500
2.500000000 GHz	38.7994	13.4496

## ■ Dielectric Parameter (2450MHz Body)

**Title : QL 220 Plus****SubTitle : 2450 MHz Body**

September 07, 2005 11:01 AM

Frequency	e'	e''
2.400000000 GHz	55.4850	14.1448
2.405000000 GHz	55.3861	14.1650
2.410000000 GHz	55.1983	14.1412
2.415000000 GHz	54.7849	14.2383
2.420000000 GHz	54.3633	14.3411
2.425000000 GHz	54.0683	14.3964
2.430000000 GHz	53.8962	14.4386
2.435000000 GHz	53.7409	14.4515
2.440000000 GHz	53.5809	14.4515
2.445000000 GHz	53.4145	14.5199
2.450000000 GHz	53.2231	14.5630
2.455000000 GHz	53.0583	14.5753
2.460000000 GHz	52.8810	14.6129
2.465000000 GHz	52.7936	14.6798
2.470000000 GHz	52.7338	14.7379
2.475000000 GHz	52.6965	14.7746
2.480000000 GHz	52.6103	14.8180
2.485000000 GHz	52.5043	14.8724
2.490000000 GHz	52.4355	14.9399
2.495000000 GHz	52.4037	14.9823
2.500000000 GHz	52.3377	14.9927