



Report No.: HCT-SAR05-0902 FCC ID: I28MD-RW4137 w/ I28MD-BTC2TY3 DATE: October 08, 2005

ATTACHMENT C – DIPOLE VALIDATION

Validation Data (2450MHz Head)

Dipole 2450 MHz

SAM II Phantom; Flat Section; Position: (90°,90°); Frequency: 2450 MHz

Probe: ET3DV6 - SN1798; ConvF(4.75,4.75,4.75); Crest factor: 1.0; Brain 2450 MHz: $\sigma = 1.79 \text{ mho/m}$ $\epsilon_r = 38.8$ $\rho = 1.00 \text{ g/cm}^3$

Cube 5x5x7: SAR(1g): 55.2 mW/g, SAR(10g): 25.0 mW/g

Coarse: Dx = 20.0, Dy = 20.0, Dz = 10.0

Powerdrift: 0.01 dB

Comment :

Dipole Validation (D2450V2/ S.N: 743)

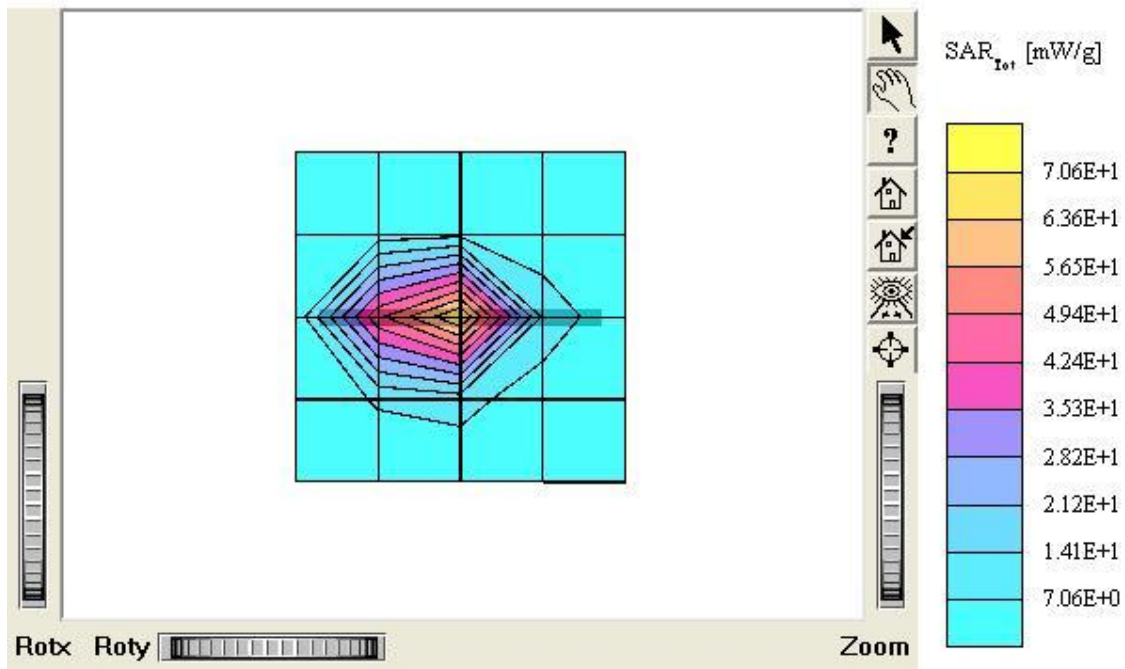
2450MHz Brain

Antenna Input Power: 30dBm (1 W)

HCT Co., Ltd. Brain Tissue Simulating Liquid

Liquid Temperature : 21.7 °C

Date Tested : October 07, 2005



Dipole 2450 MHz

SAM II Phantom; Section; Position: ; Frequency: 2450 MHz

Probe: ET3DV6 - SN1798; ConvF(4.75,4.75,4.75); Crest factor: 1.0; Brain 2450 MHz: $\sigma = 1.79 \text{ mho/m}$ $\epsilon_r = 38.8$ $\rho = 1.00 \text{ g/cm}^3$

Z-Axis: $D_x = 0.0$, $D_y = 0.0$, $D_z = 5.0$

Comment :

Dipole Validation (D2450V2/ S.N: 743)

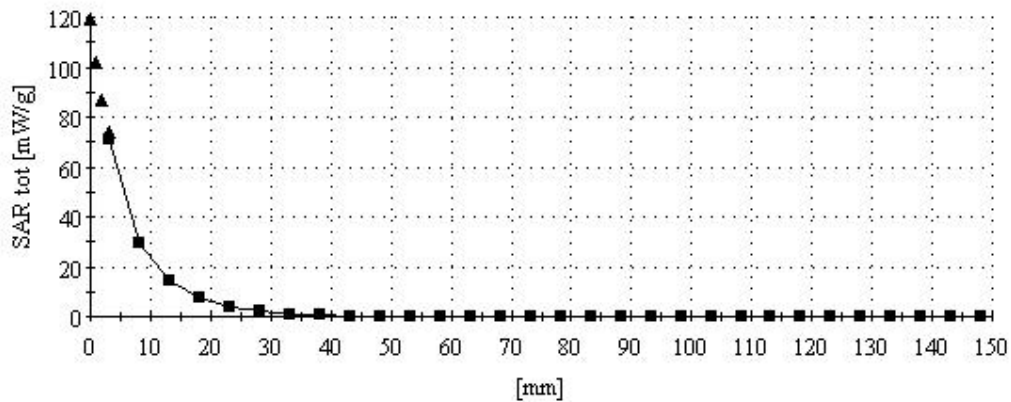
2450MHz Brain

Antenna Input Power: 30dBm (1 W)

HCT Co., Ltd. Brain Tissue Simulating Liquid

Liquid Temperature : 21.7 °C

Date Tested : October 07, 2005



■ Dielectric Parameter (2450MHz Head)

Title : RW 420
SubTitle : 2450 MHz Head
October 07, 2005 09:28 AM

Frequency	e'	e''
2.400000000 GHz	38.9998	12.9986
2.405000000 GHz	38.9746	12.9922
2.410000000 GHz	38.9567	12.9742
2.415000000 GHz	38.9316	13.0039
2.420000000 GHz	38.8974	13.0191
2.425000000 GHz	38.8849	13.0300
2.430000000 GHz	38.8696	13.0572
2.435000000 GHz	38.8220	13.0785
2.440000000 GHz	38.8021	13.0931
2.445000000 GHz	38.8063	13.1456
2.450000000 GHz	38.7787	13.1668
2.455000000 GHz	38.7485	13.1682
2.460000000 GHz	38.7331	13.2097
2.465000000 GHz	38.7418	13.2335
2.470000000 GHz	38.7040	13.2610
2.475000000 GHz	38.7029	13.2987
2.480000000 GHz	38.7116	13.3088
2.485000000 GHz	38.6699	13.3178
2.490000000 GHz	38.6427	13.3530
2.495000000 GHz	38.6437	13.3532
2.500000000 GHz	38.6897	13.3671

■ Dielectric Parameter (2450MHz Body)

Title : RW 420
SubTitle ; 2450 MHz Body
October 07, 2005 10:55 AM

Frequency	e'	e''
2.400000000 GHz	51.3422	14.6993
2.405000000 GHz	51.3076	14.6913
2.410000000 GHz	51.2737	14.6865
2.415000000 GHz	51.2203	14.7020
2.420000000 GHz	51.1902	14.7151
2.425000000 GHz	51.1483	14.7244
2.430000000 GHz	51.1459	14.7595
2.435000000 GHz	51.0990	14.7792
2.440000000 GHz	51.0701	14.7770
2.445000000 GHz	51.0296	14.8373
2.450000000 GHz	51.0372	14.8792
2.455000000 GHz	51.0140	14.8929
2.460000000 GHz	50.9971	14.9322
2.465000000 GHz	50.9703	14.9692
2.470000000 GHz	50.9674	15.0101
2.475000000 GHz	50.9727	15.0483
2.480000000 GHz	50.9558	15.0922
2.485000000 GHz	50.9308	15.1054
2.490000000 GHz	50.9568	15.1293
2.495000000 GHz	50.9399	15.1365
2.500000000 GHz	50.9717	15.1346