



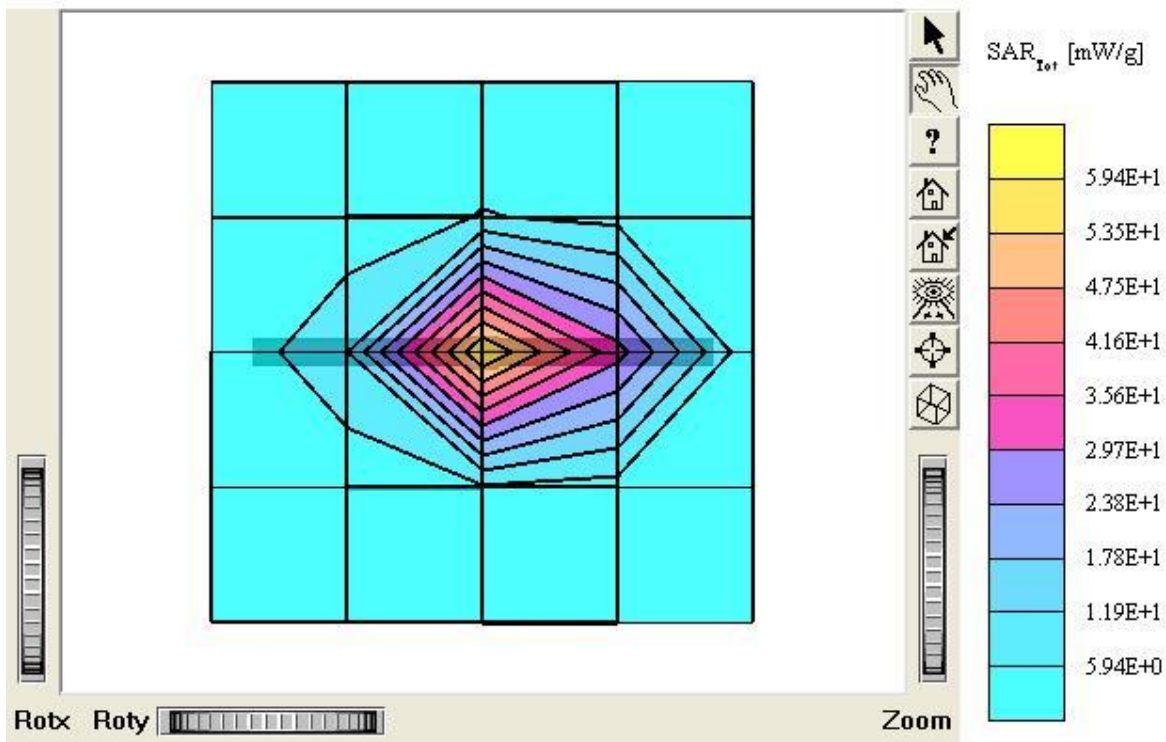
Report No.: HCT-SAR05-0902 FCC ID: I28MD-ZLAN11B/I28MD-BTYCTY3 DATE: September 7, 2005

ATTACHMENT C – DIPOLE VALIDATION

Validation Data (2450MHz Head)

Dipole 2450 MHz

SAM I Phantom; Flat Section; Position: (90°,90°); Frequency: 2450 MHz
Probe: ET3DV6 - SN1798; ConvF(4.75,4.75,4.75); Crest factor: 1.0; Brain 2450 MHz: $\sigma = 1.80 \text{ mho/m}$ $\epsilon_r = 38.8$ $\rho = 1.00 \text{ g/cm}^3$
Cube 5x5x7; SAR(1g): 53.0 mW/g, SAR(10g): 24.1 mW/g
Coarse: Dx = 20.0, Dy = 20.0, Dz = 10.0
Peak: 112 mW/g; Powerdrift: 0.00 dB
Comment :
Dipole Validation (D2450V2/ S.N: 743)
2450MHz Brain
Antenna Input Power: 30dBm (1 W)
HCT Co., Ltd. Brain Tissue Simulating Liquid
Liquid Temperature : 21.3 °C
Date Tested : September 6, 2005



Dipole 2450 MHz

SAM I Phantom; Section; Position ; Frequency: 2450 MHz

Probe: ET3DV6 - SN1798; ConvF(4.75,4.75,4.75); Crest factor: 1.0; Brain 2450 MHz: $\sigma = 1.80 \text{ mho/m}$ $\epsilon_r = 38.8$ $\rho = 1.00 \text{ g/cm}^3$

:

Z-Axis: $D_x = 0.0$, $D_y = 0.0$, $D_z = 5.0$

:

Comment :

Dipole Validation (D2450V2/ S.N: 743)

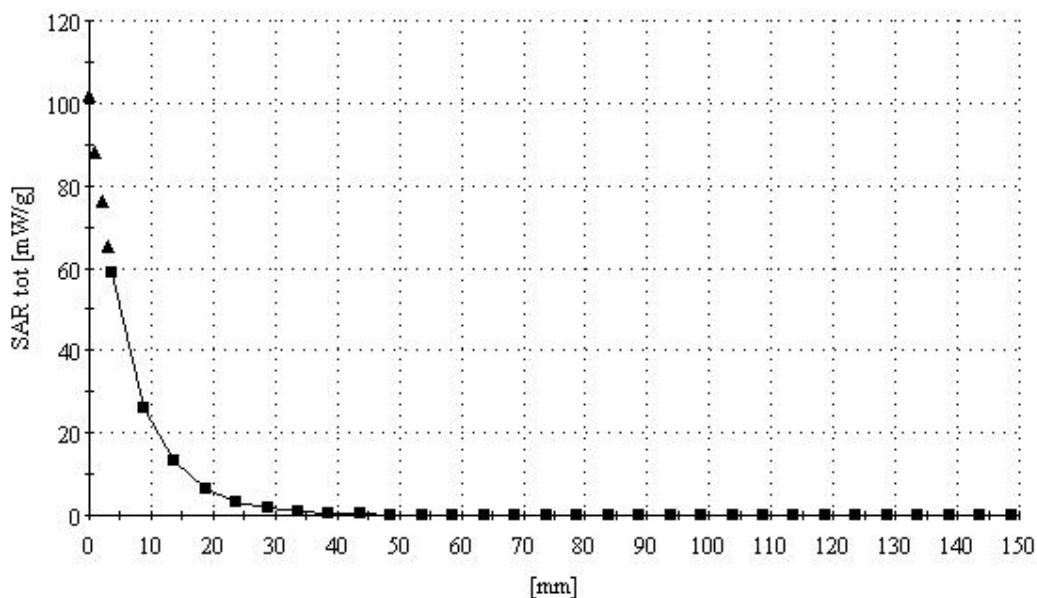
2450MHz Brain

Antenna Input Power: 30dBm (1 W)

HCT Co., Ltd. Brain Tissue Simulating Liquid

Liquid Temperature : 21.3 °C

Date Tested : September 6, 2005



■ Dielectric Parameter (2450MHz Head)

Title : RW 420**SubTitle : 2450 MHz Head**

September 06, 2005 09:33 AM

| Frequency | e' | e'' |
|-----------------|---------|---------|
| 2.400000000 GHz | 39.0088 | 13.1132 |
| 2.405000000 GHz | 38.9824 | 13.1050 |
| 2.410000000 GHz | 38.9787 | 13.0805 |
| 2.415000000 GHz | 38.9409 | 13.1014 |
| 2.420000000 GHz | 38.9027 | 13.1116 |
| 2.425000000 GHz | 38.8875 | 13.1192 |
| 2.430000000 GHz | 38.8953 | 13.1242 |
| 2.435000000 GHz | 38.8616 | 13.1586 |
| 2.440000000 GHz | 38.8330 | 13.1528 |
| 2.445000000 GHz | 38.8287 | 13.1985 |
| 2.450000000 GHz | 38.7994 | 13.2046 |
| 2.455000000 GHz | 38.7773 | 13.2350 |
| 2.460000000 GHz | 38.7728 | 13.2534 |
| 2.465000000 GHz | 38.7569 | 13.2677 |
| 2.470000000 GHz | 38.7362 | 13.3054 |
| 2.475000000 GHz | 38.7233 | 13.3228 |
| 2.480000000 GHz | 38.7256 | 13.3382 |
| 2.485000000 GHz | 38.7010 | 13.3381 |
| 2.490000000 GHz | 38.6752 | 13.3749 |
| 2.495000000 GHz | 38.6648 | 13.3876 |
| 2.500000000 GHz | 38.7029 | 13.3889 |

■ Dielectric Parameter (2450MHz Body)

Title : RW 420**SubTitle : 2450 MHz Body**

September 06, 2005 02:06 PM

| Frequency | e' | e'' |
|-----------------|---------|---------|
| 2.400000000 GHz | 53.2984 | 14.1757 |
| 2.405000000 GHz | 53.2563 | 14.1838 |
| 2.410000000 GHz | 53.2445 | 14.2030 |
| 2.415000000 GHz | 53.1750 | 14.2549 |
| 2.420000000 GHz | 53.1192 | 14.2814 |
| 2.425000000 GHz | 53.0514 | 14.3278 |
| 2.430000000 GHz | 53.0136 | 14.3703 |
| 2.435000000 GHz | 52.9793 | 14.4240 |
| 2.440000000 GHz | 52.9107 | 14.4185 |
| 2.445000000 GHz | 52.8602 | 14.4708 |
| 2.450000000 GHz | 52.8837 | 14.5114 |
| 2.455000000 GHz | 52.8613 | 14.5314 |
| 2.460000000 GHz | 52.7921 | 14.5745 |
| 2.465000000 GHz | 52.7883 | 14.6284 |
| 2.470000000 GHz | 52.7431 | 14.6597 |
| 2.475000000 GHz | 52.7166 | 14.7016 |
| 2.480000000 GHz | 52.7133 | 14.7168 |
| 2.485000000 GHz | 52.6780 | 14.7397 |
| 2.490000000 GHz | 52.6705 | 14.7570 |
| 2.495000000 GHz | 52.6544 | 14.7938 |
| 2.500000000 GHz | 52.5886 | 14.8076 |